

LEXUS LS

2021





WELCOME TO LEXUS

Thank you for your interest in Lexus. You've taken the first step into a world of thoughtfully engineered products, precision craftsmanship and unrivaled Guest care. Welcome to a luxury experience where we strive to treat you like a "Guest in our home".

Life can be full of pressures, yet also full of moments to capture and enjoy. At Lexus, we want to give you the freedom to chase and experience those moments. That's why we dedicate the time towards every vehicle and every service; so, you can make the most of yours.

We know time is the ultimate luxury and our brand promise is to focus our efforts on delivering vehicles, technologies and guest services that allow you to enjoy those special moments in life.

I invite you to explore our 2021 model selection. Whether it's one of our luxury SUVs, a breathtaking coupe or a nimble performance sedan, I know there is a Lexus waiting to help you enjoy the drive and make time for amazing.

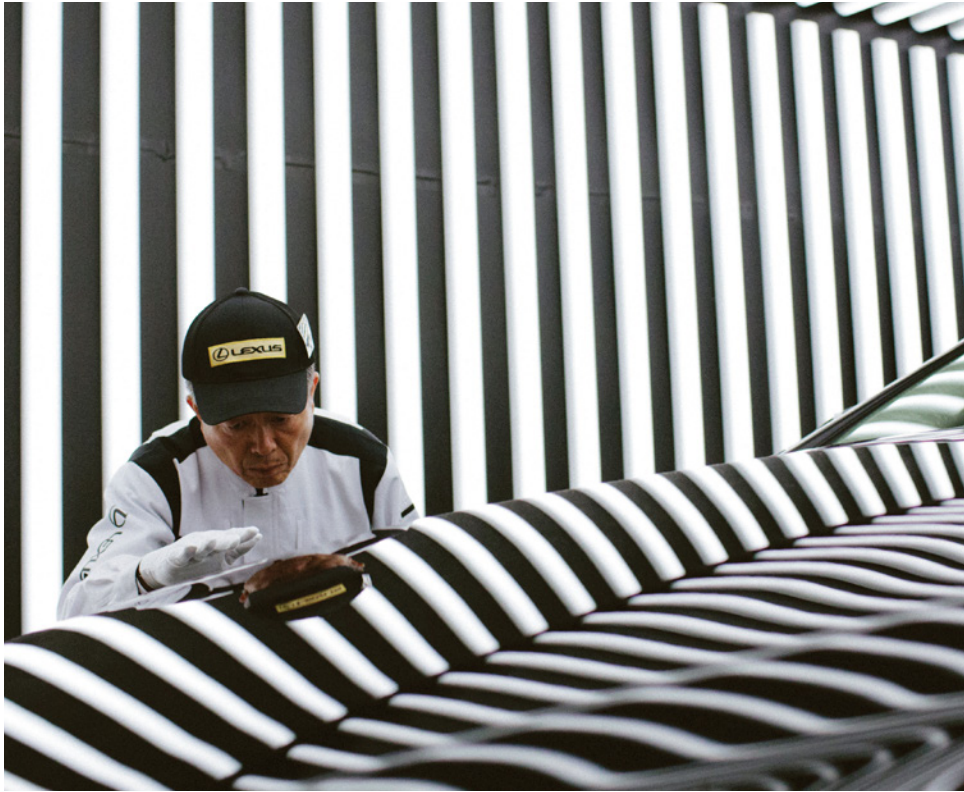
A handwritten signature in black ink, reading "M. Gilbert". The signature is fluid and cursive, with a prominent initial "M" and a stylized "G".

Martin Gilbert
Director of Lexus Canada

EXPERIENCE SOMETHING GREATER

From the start, Lexus has redefined luxury. The Japanese principle of Omotenashi brings unrivaled Guest hospitality, with a dedication to treating everyone with warmth, care and respect as if they were a Guest in our own home. While cutting-edge design and exceptional attention to detail shows the meticulous craftsmanship of legendary Lexus Takumi Masters. Along with pioneering innovations, impassioned styling and a thirst for enhancing every drive, it's a luxury experience unlike any other.







LUXURY LIKE NO OTHER

From the moment you grip the hand-stitched leather steering wheel or admire the exquisite detailing inspired by fine Japanese Kiriko glassware, you know. The new 2021 LS isn't just the peak of luxury, it revolutionizes what a luxury vehicle can and should be. It represents the seamless fusion of style, efficacy, and effortless power, to create a familiar, yet distinct experience. As the fifth generation of the vehicle that started it all, the LS embraces our past to speak volumes of our future. Because you can't build a legacy, without a solid foundation.





AN UNMATCHED EXPERIENCE IN EVERY WAY

Unique, commanding and unmistakable are words that hardly do it justice. Drawing from historic Japanese traditions, the interior of the LS perfectly fuses the contemporary and the classical. For Takumi master craftspeople, the delight is in the details. Enjoy the unrivalled luxuries of features such as 28-way power adjustable massage driver seating, a Climate Concierge that allows for 4 independent temperature zones, and available panoramic moonroof, all while the 23 speakers of the immersive Mark Levinson QLI Technology will have you feeling as if you're sitting in the world's finest concert halls. The Executive package adds an extendable Ottoman with full power sunshade and a Dual Screen Entertainment System.





A VISION OF INTELLIGENT BEAUTY

The sculpted coupe-like silhouette of the LS is crafted out of ultra-high tensile steel for lower weight and rigidity. Every sweep of the bodylines signifies a renaissance of the model that challenged the segment since its inception. Control can be felt at every turn with standard Adaptive

Variable Suspension improving performance and handling. Efficient venting improves aerodynamic stability and brings every piece together to form a vehicle that exudes confidence and garners awe.

	POWER¹	ENGINE	FUEL RATING¹ (L/100 km) (City/Hwy)	SEATS	AIRBAG²
LS 500	416 HP	3.5 L, V6	13.8/8.7	5	10
LS 500h	354 Net HP	Multi-Stage Hybrid	10.1/8.1	5	12



F SPORT

Experience the exhilaration of style and performance with *F SPORT* packages for your everyday driving enjoyment. *F SPORT* features interior enhancements such as paddle shifters, an LFA-inspired digital dashboard, and enhanced steering wheel, shift knob and seating. Exterior features including an attention-grabbing mesh grille and exclusive 20-inch *F SPORT* alloy wheels that infuse even more sports styling into the LS.



SELF-CHARGING HYBRID ELECTRIC

Our Self-Charging Hybrid Electric technology provides enhanced powertrains that pair impressive fuel efficiency with cleaner emissions, so you never compromise on performance, or an enjoyable driving experience.¹ The Multi-stage Hybrid system found in the LS 500h is our most advanced system yet, granting even more power and efficiency. M-Mode² with 10-speed 'automatic transmission simulated shift control', lets you select and hold gears manually using steering wheel mounted paddle shifters.





TECHNOLOGY

LEXUS ENFORM

Lexus Enform also offers progressive technology to make every journey richer. Discover where to go with available Destination Assist and access a live Enform Response Agent 24/7 who can find the location you're looking for and send the route to your Lexus Navigation system. For added confidence, Enform-equipped Lexus vehicles feature Enform Safety Connect, where Enform Response Agents can assist you in the event of a collision or even help locate your vehicle should it be stolen³. For added convenience your vehicle's multi-media display is compatible with Apple CarPlay™ and Android Auto™.

Visit Lexus.ca/Enform to view vehicle compatibility.



LS 500 Shown for Demonstrative Purposes.

LEXUS APP

With the Lexus App, the opportunities to stay connected to your vehicle are more plentiful than ever. On select 2021 Lexus models, use Enform Remote to monitor your vehicle's status, even when it's out of sight. Conveniently start or unlock your vehicle from your smartphone, Amazon Alexa™, Google Assistant devices and/or select smartwatches. Set guest parameters for occasional drivers such as valets or family members and receive a notification if a boundary is crossed. Plus, with Enform Service Connect, convenient vehicle health reports with information about your Lexus' maintenance needs are sent right to your Lexus App, so you can always stay informed.³

Visit Lexus.ca/Enform to view vehicle compatibility.

LSS+ 2.0

Lexus Safety System+ 2.0 integrates a portfolio of active safety technologies to support your awareness and decision-making under a variety of traffic conditions and contingencies. Standard on LS 500 AWD.

LSS+ 2.0²:

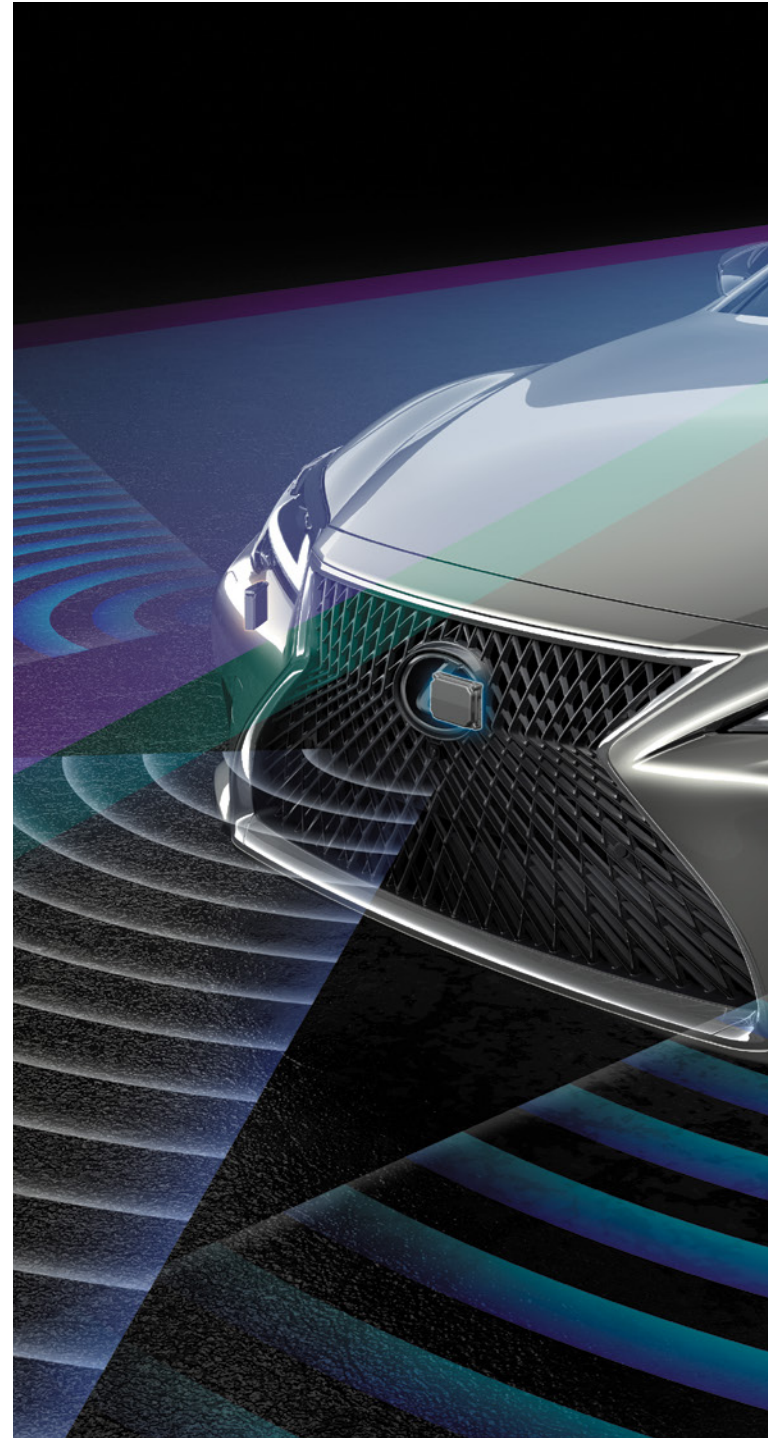
- Pre-collision Safety System with Pedestrian Detection¹⁰ & Bicycle Detection
- Lane Departure Alert with Steering Assist & Road Edge Detection
- Full-Speed Dynamic Radar Cruise Control
- Automatic High Beam

LSS+ A

LSS+ A adds to a portfolio of active safety technologies, all designed to support your awareness and decision-making under a variety of traffic conditions and contingencies. The latest innovations help prevent four major types of accidents -- from rear end collisions to head-on crashes in intersections. Intersection Turning Assist, a new addition for LSS+ A, is designed to detect oncoming vehicles from the front when turning left at an intersection as well as crossing pedestrians approaching from the front when turning right or left. Available on select packages of LS 500 AWD and standard on LS 500h AWD.

- Pre-collision System with Pedestrian Alert and Active Steering Assist
- Front Cross Traffic Alert
- Lexus CoDrive

Visit Lexus.ca/Safety to learn more about LSS+ A and LSS+ 2.0.



EXTERIOR COLOURS



ULTRA WHITE (*F SPORT*)



EMINENT WHITE PEARL



ATOMIC SILVER



IRIDIUM



CAVIAR



MANGANESE LUSTRE



SILVER ILLUSION



ULTRASONIC BLUE MICA 2.0 (*F SPORT*)

INTERIOR COLOURS



WHITE



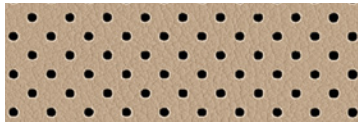
BLACK



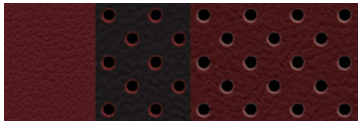
CHATEAU



CIRCUIT RED



PALOMINO



CRIMSON RED



NOBLE BROWN



WHITE (*F SPORT*)

WARRANTY INFORMATION

SERVICE COMMITMENT

On top of enjoying the highest quality product, Lexus also delivers through a professional Dealer network, a unique and uncompromising level of after-sales service. First Class Service Concept. The highest level of professionalism and vehicle support ensure that Lexus ownership experience is as luxurious as the vehicles.

WARRANTY

Our Lexus Warranty Comprehensive Coverage includes:
48 months/80,000 km

SERVICE REPLACEMENT PARTS WARRANTY

24 months/40,000 km
Applicable to Lexus Genuine Parts installed by a Lexus Dealer on a Lexus vehicle or purchased over the counter.

HYBRID-RELATED COMPONENTS

96 months/160,000 km (applies to battery control module, hybrid vehicle control module, hybrid battery and the inverter/converter)

2021 Model Year HV Battery coverage has been extended to 10 years or 240,000 km.

POWERTRAIN

72 months/110,000 km

CORROSION PERFORATION

72 months/unlimited kilometres

MAJOR EMISSION CONTROL COMPONENTS

96 months/130,000 km

Please see your Lexus Dealer for details. Lexus will even provide five days of alternate transportation if your vehicle is required to stay at the dealership for an extended period of time due to a warrantable condition.

EXTRA CARE PROTECTION

Extend beyond the new vehicle warranty and enhance your peace of mind with Lexus Extra Care Protection.

ROADSIDE ASSISTANCE

As a proud owner of a Lexus vehicle you won't have to worry about obtaining assistance when mishaps requiring Emergency Roadside Service or Mechanical Breakdown Towing are needed. Throughout Canada and the continental U.S., our Central Emergency Roadside Services Operator will always be there to ensure you receive prompt, efficient services from one of the many facilities qualified under our approved Roadside Assistance Program. Twenty-four hours a day, 365 days a year we will be there to help.

LEXUS FINANCIAL SERVICES

Come talk to the experts whose exclusive business is financing and leasing Lexus vehicles. You'll find our interest rates fully competitive and our terms flexible - up to 72 months. Our online services conveniently allow you to confirm current rates and receive your credit approval in advance of selecting the Lexus that's right for you. For help, visit your Lexus Dealer or lexus.ca, or call 1800 26-LEXUS.

LEXUS CANADA

Every effort has been made to ensure the specifications and equipment shown are accurate based on information available at time of printing. In some cases, certain changes in standard equipment, options or product delays may occur, which would not be reflected in this brochure. Lexus Canada reserves the right to make these changes without notice or obligation. Some of the photography in this brochure features U.S. or overseas models, shown with optional equipment that may not be available in Canada. Your Lexus Dealer is the best source for up-to-date information.

lexus.ca
1 800 26-LEXUS

To sign up for information on Lexus, go to **experience.lexus.ca**
Lexus Canada
One Toyota Place,
Toronto, Ontario
M1H 1H9

*Vehicles in this brochure shown with optional equipment. Some features mentioned and/or shown in this brochure may only be available as part of an optional package. Under very cold conditions, the operation of some vehicle electronic systems using liquid crystal technology (such as CD, DVD, NAV and Audio displays) may be adversely affected until a warmer interior vehicle temperature is reached. Lexus reminds you to place small children in CSA-approved car seats - in the rear seats, to always wear your seatbelts, and to drive safely. **1. Horsepower/Performance:** Ratings achieved using the required premium unleaded gasoline with an octane rating of 91 or higher. The Lexus Hybrids have nearly 70% fewer smog-forming emissions compared against similarly equipped conventional gasoline power vehicles. Based on North American sales data and Federal Tier 2 engine emission requirements. **Fuel Rating:** Estimates determined using approved Government of Canada Test Methods. Actual fuel consumption will vary based on driving habits and other factors. Refer to the Government of Canada Fuel Consumption Guide for further information. **2. For all safety features,** System effectiveness depends on many factors. Please see your Owner's Manual for further information and a complete list of limitations and directions. **Lane Departure Alert** is designed to read the lane markers of certain roads. If the vehicle approaches the outer limits of its lane, the system warns the driver that corrective action may be required. It is not a collision-avoidance system and is not a substitute for safe and attentive driving. **Lane Trace Assist** is designed to read the lane markers of certain roads. If the vehicle approaches the outer limits of its lane, the system warns the driver that corrective action may be required. It is not a collision-avoidance system and is not a substitute for safe and attentive driving. Do not rely exclusively on the **Rear Cross-Traffic Alert System**. There are limitations to the function, detection and range of the system. You should also look around outside your vehicle, over your shoulder and use your mirrors to confirm rearward clearance. Do not rely exclusively on the **Blind Spot Monitor System** to determine if a lane change is safe. Always look over your shoulder and use your turn signal before changing lanes. There are severe limits to the function, detection range and clarity of the monitor system. **Dynamic/Radar Cruise Control** was designed to assist the driver and is not a substitute for safe and attentive driving practices. **The Pre-collision System** is designed to help reduce the crash speed and damage in certain frontal collisions only. It is not a collision avoidance system and is not a substitute for safe and attentive driving. System effectiveness depends on many factors, such as speed, driver input and road conditions. **Automatic High Beam** feature can help improve vision at night. However, conditions such as a dirty windshield, rapidly changing light conditions or hilly terrain will limit effectiveness so the driver may need to manually adjust the high beams from on to off. **Brake Assist** is designed to help the driver take full advantage of the benefits of ABS. It is not a substitute for safe driving practices. Braking effectiveness also depends on proper brake-system maintenance and tire and road conditions. All the **airbag ("AB") systems are Supplemental Restraint Systems**. All ABs (if installed) are designed to inflate only under certain conditions and in certain types of severe collisions: frontal and knee ABs typically inflate in frontal collisions; side and side curtain ABs in side collisions; Roll-Sensing Curtain ABs at a severe tilt degree, roll or lateral G-force.[CN1] **3. The Navigation System** is designed to assist in locating an address or point of interest. Discrepancies may be encountered between the system and your actual location. Road system changes may affect the accuracy of the information provided. Rely on your common sense to decide whether to follow a specified route. Detailed coverage not available for every city or roadway. Periodic updates available at an additional cost. See your Navigation System Owner's Manual for further details. Navigational systems in some vehicles are available with bilingual capability. **Mark Levinson®** is a registered trademark of Harman International Industries Incorporated. Be sure to obey traffic regulations and always maintain awareness of road and traffic regulations. Apps/Services vary by phone/carrier; functionality depends on many factors. Select Apps use large amounts of data; you are responsible for these charges. Contact with the response centre may not be available in all areas. Service agreement required. A variety of subscription terms available. Charges will vary. [CN2] **Lexus App:** Driving while distracted can result in loss of vehicle control. Obey all local laws concerning the use of the systems while driving as some laws prohibit the use of electronic devices while operating a vehicle. Enform Services are dependent upon connection to a 3rd party compatible wireless cellular network, either 3G GSM/GPRS or LTE. Lexus is not responsible for cellular network discontinuance. Select Enform apps and services use significant amounts of data and customers are responsible for all data charges. Apps and services vary by phone/carrier and not all services are available all the time and in all locations. Smartphone operating system updates may affect connectivity between your phone and vehicle; Lexus is not responsible for connectivity issues. Enform Remote and Service Connect: Do not remotely start engine if vehicle is in an enclosed space or vehicle is occupied by a child. **Enform Remote and Service Connect** are dependent upon an operative telematics device, a cellular connection, navigation map data and GPS satellite signal reception, and other factors outside of Lexus' control. Registration and app download are required. Select Apps use large amounts of data; you are responsible for charges. To learn about Enform data collection, use, sharing and retention, please visit www.lexus.ca/enform-privacy. The Enform Remote and Service Connect trial period is at no extra cost, after which enrollment in a paid subscription is required. Terms and conditions apply. See lexus.ca/enform for full details. **Amazon Alexa:** Amazon, Alexa and all related logos are trademarks of Amazon.com, Inc. or its affiliates. Skills and services subject to change at any time without notice. Three-year complimentary trial; app downloads required. **Enform Destination Assist:** Be sure to obey traffic regulations and maintain awareness of road and traffic conditions at all times. The Destination Assist trial period is at no extra cost after which enrollment in a paid subscription is required. Terms and conditions apply. **Enform Safety Connect:** Contact with Safety Connect™ response centre is dependent upon the telematics device being in operative condition, cellular connectivity availability, and GPS satellite signal reception, which can limit the ability to reach the response centre or receive emergency support. The Enform Safety Connect trial period is at no extra cost after which enrollment in a paid subscription is required. Terms and conditions apply.

lexus.ca

1 800 26-LEXUS

To sign up for information on Lexus, go to experience.lexus.ca

Lexus Canada, One Toyota Place, Toronto, Ontario, M1H 1H9

