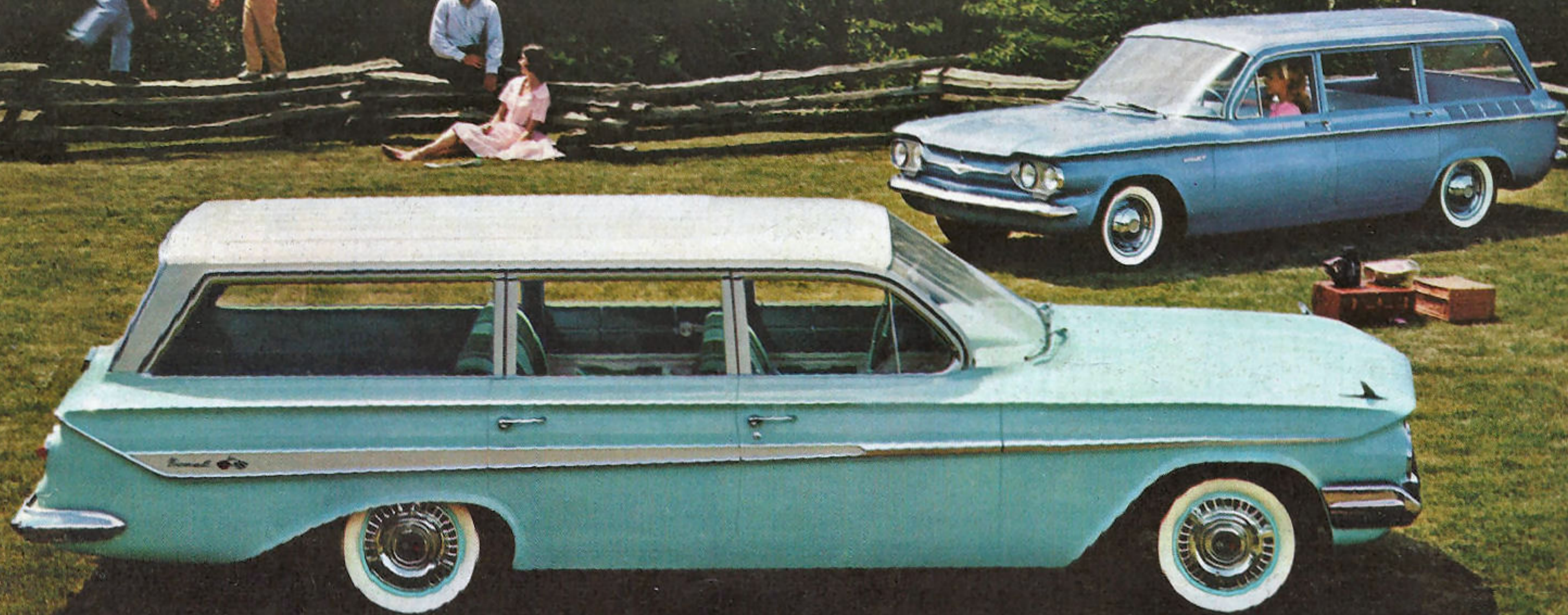
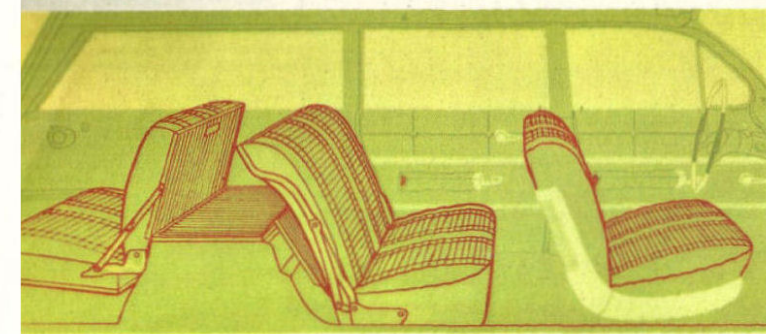


10 NEW STATION WAGONS FROM CHEVROLET FOR '61



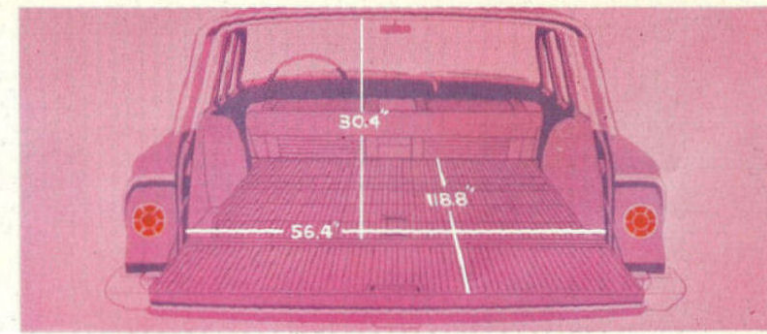
INCLUDING 4 NEW CHEVY CORVAIR WAGONS

NEW DIMENSIONS



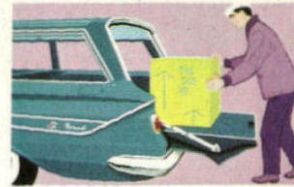
IN PASSENGER ROOM AND DRIVING COMFORT . . .

These new Chevrolet Wagons are measurably better in room and comfort. Wider, roomier door openings make it far easier to get in and out of all four doors, help take the "crouch" out of climbing in. Take door opening widths, for example. More than 5 in. have been added across the front door opening, nearly 2 in. across the rear door. Once inside, higher front seats let you sit up and take notice of the road, reduce driving fatigue. And, Chevy Station Wagons give you room to relax regardless of where you sit. Front seat has ample hip and shoulder room, with head and leg room increased in '61. There's more foot room, with a narrower driveline tunnel for rear seat passengers. In 9-passenger wagons, third seat passengers face to the rear with more shoulder room for greater comfort. Measure for yourself! The new dimensions in these '61 Chevrolet Wagons are planned around your driving comfort and convenience.



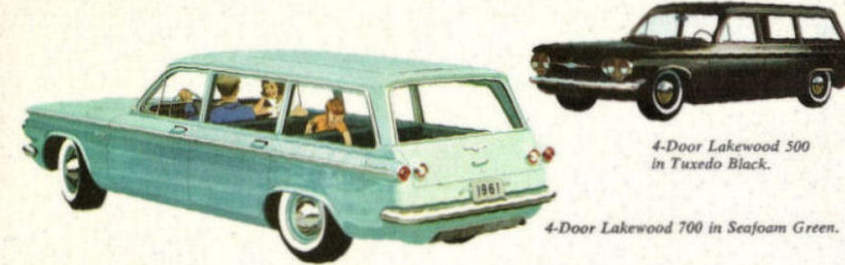
FOR CARGO SPACE AND LOADING EASE . . .

For downright easy loading and wide open cargo spaces, '61 Chevrolet Wagons create a new yardstick for others to measure up to. Total load space, with seats down ready for cargo, is up to 97.5 cu. ft.; total load length, with one-piece tailgate down, is nearly 10 ft.! Even more important is the functional design that allows you access to all that space. At floor level (a critical dimension in loading bulky objects), the cargo opening is over 56 in. across, almost 9 in. wider in '61. From floor to roof (also important for big items), Chevy Wagon rear openings measure over 30 in., almost 4 in. higher this year. To lighten the lift of any load, the loading deck is lower to the ground (only 23 in. high). And, when you've packed that cavernous cargo space, you get another surprise as you lift the tailgate. Special concealed hinges counterbalance more of the weight of the tailgate, and make it almost effortless to close.



4 NEW CHEVY CORVAIR WAGONS

LAKWOOD 700 STATION WAGON • LAKWOOD 500 STATION WAGON • GREENBRIER DELUXE SPORTS WAGON • GREENBRIER SPORTS WAGON



4-Door Lakewood 700 in Seafoam Green.

4-Door Lakewood 500 in Tuxedo Black.

WORLD'S ONLY STATION WAGON WITH PLENTY OF REAR CARGO SPACE AND FRONT LUGGAGE COMPARTMENT Chevy's Corvaire Lakewood Station Wagons combine the load carrying advantages of conventional wagons plus a separate, key-locking front trunk space of 10 cu. ft., giving a total cargo space of 68 cu. ft.! It's made possible by Corvaire's rear-engine design, now proven by a year of owner acclaim. Lakewoods handle 6 passengers plus load, take to the road with new economy in an improved version of Corvaire's air-cooled aluminum Turbo-Air 6 engine.



Greenbrier De Luxe Sports Wagon in Romany Maroon and Carneio White.

WORLD'S MOST VERSATILE VEHICLE Chevy Corvaire Greenbrier Sports Wagons . . . designed for fun and business with 175.5 cu. ft. of cargo space, plenty of room for nine passengers with third seat* in place. Greenbrier rides smoothly on 4-wheel independent coil suspension, performs exceptionally due to power and traction of rear-engine design; offered in 2 models: Greenbrier and Greenbrier De Luxe. Driver enjoys almost unlimited forward visibility. Fits easily into standard size garage.



EASY LIFTGATE LOADING An easy motion opens Lakewood's one-piece liftgate, exposing a rear cargo space of 58 cu. ft., a load floor over 56 in. wide and nearly 6½ ft. long with second seat down. Liftgate opening at widest point is over 4 ft., height is more than 2 ft. From ground to opening is just over 26 in. Four-door convenience lets you reach the load from the side and rear.



SEATS 6 WITH SPACE TO SPARE Greenbrier has ample room for six passengers to sit in comfort. Easy-to-remove second seat faces either front or rear, can be positioned behind front seat. All seats are foam cushioned. With second seat removed, Greenbrier's load floor is over 9½ ft. long, more than 5 ft. wide, big enough for all family cargo needs.

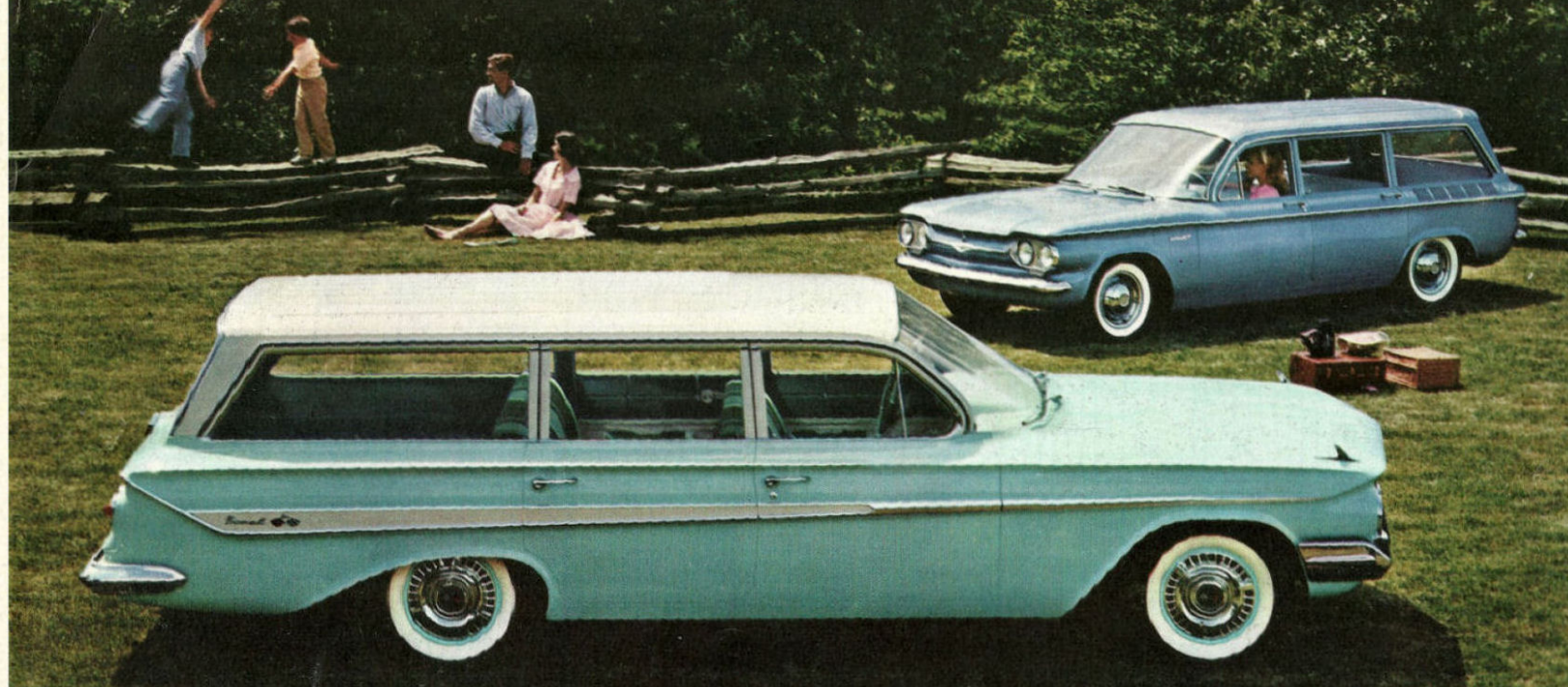


CONVENIENT SERVICE ACCESS For normal service operations such as oil checks, access to the engine is provided through a bottom-hinged door in the rear. A hinged hatch in the load floor exposes the entire engine when necessary. Separate smaller cover is provided to permit easy battery checking. Gasoline filler (not shown) is conveniently located up front on the driver's side.



LOADS FROM REAR AND SIDE The double doors at both rear and curb side allow easy loading of biggest cargo. Doors open to half-way or full-open position. Side doors are more than 53 in. wide and measure over 4 ft. high. Rear door opening is over 44 in. wide and 3 ft. high. Double doors for the left side are optional at extra cost.

10 NEW STATION WAGONS FROM CHEVROLET FOR '61



INCLUDING 4 NEW CHEVY CORVAIR WAGONS

ALL ILLUSTRATIONS AND SPECIFICATIONS CONTAINED IN THIS LITERATURE ARE BASED ON THE LATEST PRODUCT INFORMATION AVAILABLE AT THE TIME OF PUBLICATION APPROVAL. THE RIGHT IS RESERVED TO MAKE CHANGES AT ANY TIME WITHOUT NOTICE IN PRICES, COLORS, MATERIALS, EQUIPMENT, SPECIFICATIONS AND MODELS, AND ALSO TO DISCONTINUE MODELS. CHEVROLET MOTOR DIVISION . . . GENERAL MOTORS CORPORATION . . . DETROIT 2, MICHIGAN, U.S.A.



*OPTIONAL AT EXTRA COST.

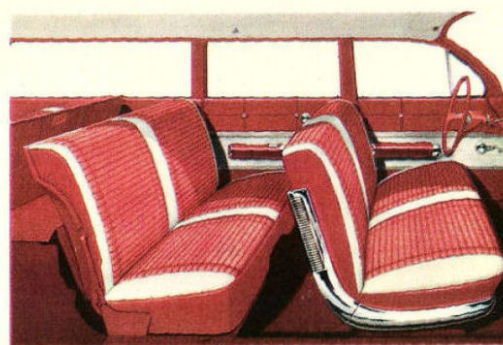
NEW SIZE NEW STYLE

'61 CHEVROLET STATION WAGONS—IN 6 NEW MODELS—WITH 4-DOOR CONVENIENCE AND 6- OR 9-PASSENGER SEATING

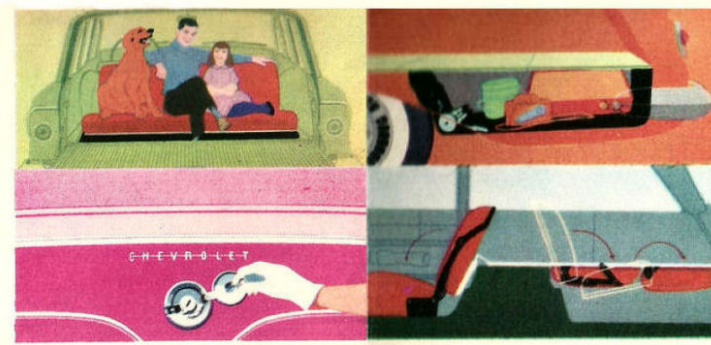
For reasons you'll like, Chevrolet's new Station Wagons for 1961 are trimly sized, cleanly styled, designed for greater convenience. Outside, Chevy's new size lets you park, maneuver and garage easily. Inside, there's functional passenger comfort, with seats more nearly chair height and new instrument panel that places all controls at your fingertips. Chevy's new Wagon style is classically simple, designed to stay fresh looking. There's a choice of six models with 6- or 9-passenger seating, all with the extra convenience of four doors. (Each offers a big stowage extra, too, in a *concealed* rear compartment.) This wide choice means in every price range there's a Chevy Wagon for you. Check them. For size, style, choice (and Chevy's traditional quality), Chevrolet Wagons give you the perfect blend for family wagon living.

NEW INTERIORS BY FISHER BODY PRACTICAL • LONG-LASTING • TASTEFUL

This is the 9-passenger Nomad's elegant interior. There's a choice of six color combinations. Like all Chevy wagons for '61, it features luxurious new trim, durable new fabrics, smart new patterns. **FISHER BODY QUALITY** Every Chevrolet Station Wagon enjoys the rugged construction and lasting value of Body by Fisher. And every Chevrolet Wagon boasts such quality features as Magic-Mirror finish, Safety Plate Glass all around and crank-operated ventpanes.



THIRD SEAT FACES REAR The third seat in Chevrolet 9-passenger wagons *faces* to the rear. There's no crawling over a second seat—handy bumper steps let you climb in easily. Chevy's third seat is built for passenger comfort. It's a seat with springs, spreads out with room for three. It's lower in '61 for increased head room (something forward-facing seats are often short of). And, the third seat can be simply removed, giving increased depth for bulky loads. **REAR WINDOW RETRACTS INTO THE TAILGATE** A new open-air look distinguishes Chevy's tailgates for '61. The rear window is larger, for better driver and passenger visibility, and it rolls down out of sight into the tailgate. With the rear window fully retracted, one simple motion lets down the tailgate, ready for cargo loading or third seat entry. All 9-passenger wagons have power operated rear windows as standard equipment. (Optional at extra cost on 6-passenger models.)



NEW HIDDEN STOWAGE SPACE In every wagon, a concealed hideaway under the rear platform gives a spacious compartment for special valuables. The compartment lid can be folded up and out of the way for free access to the entire space. In 6-passenger models (as shown) stowage space is 10.5 cu. ft. and over a foot deep to handle big items. Nine-passenger models provide extra stowage with third seat up or down. Key locks are optional at extra cost. **EASY CONVERSION FROM SEATING TO CARGO** Chevrolet Wagons are renowned for quick conversion from passenger carrying to full cargo space. In a 9-passenger wagon, just three simple steps accomplish the whole task of stowing away the second and third seats. (Without loose pads to handle either.) In both 6- and 9-passenger wagons, the second seat folds flat in a single motion. Second seats in all wagons are improved for '61: a new floor filler automatically folds into a flat, continuous floor.

SELECT FROM THE INDUSTRY'S WIDEST CHOICE OF POWER TEAMS

	Turboglide*	Powerglide*	4-Speed* Synchron-Mesh	3-Speed* SYNCHRO-Mesh	Overdrive*
280-h.p. Super Turbo-Thrust V8†	X		X	X	
250-h.p. Turbo-Thrust V8†	X		X	X	
230-h.p. Super Turbo-Fire V8*	X	X		X	X
170-h.p. Economy Turbo-Fire V8	X	X		X	X
135-h.p. Hi-Thrift 6		X		X	X

† These two engines, modified for special uses, are available with power ratings of 350 h.p. and 340 h.p. respectively, with either 3-Speed or 4-Speed Synchron-Mesh transmissions. ‡ Also 305 h.p. available with heavy-duty Powerglide, 3- or 4-Speed Synchron-Mesh transmissions.

PASSENGER CAR RIDE Between you and the roughest road there's Chevrolet's Full Coil suspension—the advanced suspension with four coil springs to sponge up shocks, take

the bumps out of going. Then, there's Chevrolet's special insulating materials—at over 725 separate points—that help prevent sound and vibrations from reaching the passenger compartment. And big 8.00 x 14 Tyrex cord tires are standard equipment, improve roadability, carry full loads more easily. **CUSTOM FEATURES TO PERSONALIZE YOUR WAGON** *Power Steering**: makes driving safer, parking easier. *Power Brakes**: remove up to one-third of braking effort; improve safety in fast stops. *Power Windows**: operate from driver's master control; also separate window controls. *Flexomatic Power Seat**: moves up, down, forward back, and tilts to desired angle. *Air Conditioning**: four-season temperature and humidity control. *De Luxe Heater**: improves temperature control through new blended air system. *Positraction Rear Axle**: automatically transfers power to the wheel that grips; pulls loads through sand, mud, ice, snow. *Roof Top Luggage Carrier**: permanently installed to roof; gives 18.5 sq. ft. of additional luggage space. *Window Screens**: all-aluminum fine mesh screens fit rear windows, keep out insects. *Divided Second Seat**: partial seating on one side, entire load length on the other; seat split 35-35.



NOMAD 9-PASSENGER in Roman Red. Standard Nomad luxury equipment includes electric clock, parking brake warning light, back-up lights, de luxe window cranks, fingertip door releases, extra-long arm rests with built-in safety reflectors. Shown on cover: **NOMAD 6-PASSENGER** in Seafoam Green and **LAKEWOOD 700** in Jewel Blue.



PARKWOOD 9-PASSENGER in Tuxedo Black. Comfort features that come with every Parkwood: glove box light, automatic door light, de luxe door handles and window cranks, twin rear ashtrays, de luxe steering wheel with turnb horn button.

PARKWOOD 6-PASSENGER in Arbor Green. Interiors offered in six bright new colors, complemented by combination carpet and vinyl-coated rubber floor coverings keyed to interior color.



BROOKWOOD 9-PASSENGER in Fawn Beige. Foam cushioned front seat, dual sun visors, two arm-rests and glove box lock are standard equipment.



BROOKWOOD 6-PASSENGER in Midnight Blue. Trim and upholstery available in three attractive colors. Floor mats of vinyl-coated rubber blend with interior colors.

*OPTIONAL AT EXTRA COST.