



1966 TRUCKS

CHEVY-VAN

SERIES G10



CHEVY-VAN

Chevy-Van is an efficient, low-cost closed delivery vehicle that will carry up to over a ton of cargo in a load compartment that's 211 cubic feet big. Tough all-welded body-frame construction assures long-lasting strength and durability and provides for a completely flat, completely

usable load compartment floor. Double-wall construction on all doors adds to body rigidity. And a forged steel I-beam front axle with leaf springs all around supplies a brawny basis for firm, protective load support. In addition, special measures are taken to repel rust and corrosion. Vulnerable areas such as front step wells and rocker panels are galvanized. Sealers are used at all critical joints. In fact, *all* underbody surfaces are treated with some type of coating to resist rust and corrosion. Efficient, economical power is supplied by Chevy's High Torque 194 Six. And, if operating conditions are to be unusually demanding, specify Chevy's 230 Six.



CONSTRUCTION FEATURES

All-welded unitized body-frame construction—Heavy-gauge panels and structural members are welded firmly together to form a tight, rattle-free unit. Even engine housing is welded to the floor panel to give extra strength and help isolate engine sound.

One-piece body panels—One-piece front and side body panels on Chevy-Van reduce the number of exposed coach joints, where rust and corrosion often gain a foothold and help extend truck life.

Weather-protected underbody—All underbody surfaces are treated to resist rust and corrosion. Inner rocker panels, front outer rocker panels, front step wells, plenum panel, and wheel housings are galvanized. High-zinc-content primers coat entire underbody including the inner surface of the front end panel. Also, an asphalt mastic with a solid filler is applied to undercoat entire structure to deaden sound and seal out moisture.

Extensive interior reinforcement—Here's the basis for Chevy-Van's torsional rigidity and durability. A deep-embossed floor panel is tied in directly with underbody components and joined as a single unit to upper body structure with vertical struts welded to rugged box-section headers. Three steel roof bows offer solid support to roof panel and help strengthen entire structure.

ENGINES



Engine compartment forms a rugged "isolation chamber" around engine heat and noise. Hinged lid swings back in a 95° arc and is held open by chain for routine service. Lid is insulated for minimum transfer of heat and sound.



HIGH TORQUE 194 SIX

Standard power for the Chevy-Van is the spirited High Torque 194 Six, rated at 120 horsepower and 177 ft.-lbs. of torque. Compression ratio is 8.50 to 1 for top efficiency on regular grade fuel.



HIGH TORQUE 230 SIX

Rated at 140 hp and 220 ft.-lbs. of torque, the 230 Six delivers top performance for those delivery jobs that call for the extra power and durability of a big truck engine. Premium features throughout help assure maximum dependability and economy.

CHASSIS FEATURES

Transmissions—Choose from a fully synchronized 3-speed transmission with steering column gearshift or fully automatic Powerglide.

Rear axles—Rugged hypoid geared rear axles give quiet, dependable performance. Standard axle has 2,400-lb. capacity with a 2,900-lb. axle also available. Positraction rear axle may be specified where there is a need for extra traction and better control on slippery surfaces.

Front suspension—Tough 2,200-lb.-capacity I-beam front axle, tubular shock absorbers

and easy-flexing 1,125-lb.-capacity leaf springs assure good riding qualities, proper support and true steering. Springs with 1,225-lb. capacity are also available.

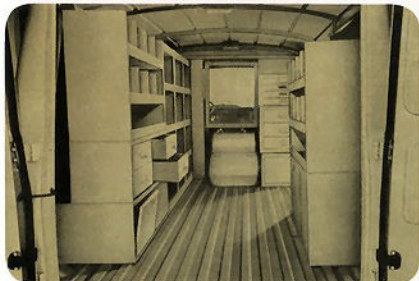
Rear suspension—Cargo is cushioned and supported by 6-leaf springs and tubular shock absorbers. Spring capacity is 1,200 lbs. each with a 7-leaf 1,450-lb.-capacity spring also available.

Brakes—Self-adjusting hydraulic brakes keep maintenance to a minimum and assure safe, balanced braking.

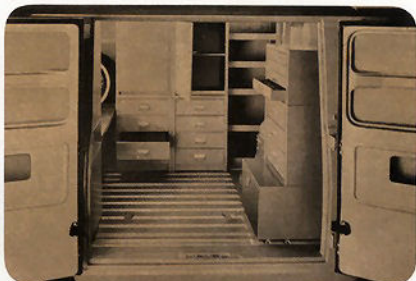
SPECIAL EQUIPMENT

Versatile Chevy-Vans are used for a wide range of different jobs. And, as a result, Chevrolet offers a variety of special racks, shelves and bins to help owners alter its

211 cubic feet of load space to suit individual job needs. Here you see a sampling of this special equipment. For complete information consult your Chevrolet dealer.



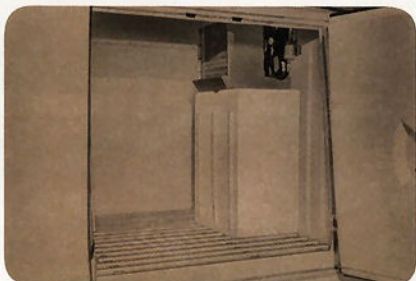
Installation for plumbing, heating and air conditioning firm. Parts bins, drawers and unobstructed floor space are featured.



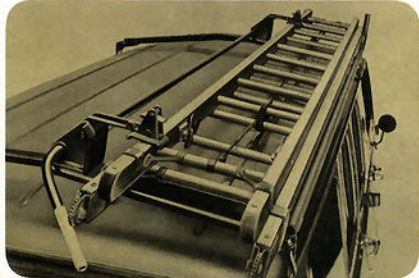
Arrangement for appliance repair business. Small compartmented drawer and bin space. Cabinets hold appliances.



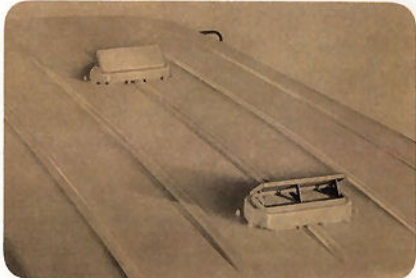
Routine delivery and service installation. Minimum bins and drawer space allow plenty of room for large bulky items.



Fully insulated, Chevy-Van has cooling capacity of 12,000 BTU's and provides temperatures ranging to below 32° F.



Quick-release ladder rack holds extension ladder firmly in place. A variety of ladder types fit this special installation.



Twin air vents in the load compartment supply quantities of fresh air to truck interior. Manually operated vents are shown.



FEATURES

Chevy-Van load compartment combines big cubic capacity with the convenience of perfectly flat floor for easy, efficient loading



Custom option—For extra luxury and to enhance appearance, a custom option package is available. Included in the complete package are nylon and vinyl seat upholstery materials, passenger's sunshade, coat hooks, dual horns, steering wheel with horn ring, cigarette lighter, vinyl-coated headliner for load compartment, chrome hub caps and windows for the rear doors.

In addition to supplying extra strength, Chevy-Van's unitized body-frame construction also provides a virtually unobstructed van interior that contains a big 211 cubic feet of load space. And, with a perfectly flat steel floor which features deep-embossed skid strips, Chevy-Van gives you over 50 sq. ft. of usable floor space to pile the cargo on. While the load length behind the engine is 7½ feet, and 9 feet behind the driver, there is ample room to the right of the engine compartment to load in objects more than 12 feet long. With an inside floor to ceiling height of 4½ feet and a load compartment that's only 22 inches off the ground for loading convenience, Chevy-Van design makes it easier for owners to load it up to over 1 ton capacity.

Side doors—Big double right side doors that open more than four feet square for curbside loading are available for Chevy-Van. All doors are double walled for extra strength and have key locks with a single-key system. Special strap door retarders can easily be disengaged by removing a pin to allow door to open full width.



Driver compartment—A foam-cushioned driver's seat with vinyl upholstery is standard with flip-swing or stationary passenger seats also available. Instrument panel is covered with non-gloss paint. Other appointments include a driver's sunshade and arm rest, dispatch box door, front and rear dome lamps, 2-speed electric windshield wipers and washers, back-up lamps.

SPECIFICATIONS

| SERIES | | G10 | | |
|------------------|--|--------------------------|-------------|-------------|
| GVW RATING | | 3600 TO 5000 LBS | | |
| FRONT SUSPENSION | | STANDARD | OPTIONAL | |
| AXLE—TYPE | | I-BEAM | | |
| —CAPACITY (LBS.) | | 2200 | | |
| SPRINGS—TYPE | | LEAF | | |
| —CAPACITY (LBS.) | | 1125 | 1225 | |
| SHOCK ABSORBERS | | STD. | | |
| STABILIZER BAR | | OPTIONAL | | |
| REAR SUSPENSION | | CHEVROLET SEMI-FLOATING | | |
| AXLE—TYPE | | 2400 | 2400 2900 | |
| —CAPACITY (LBS.) | | 3.36* | 4.11* 3.73* | |
| —RATIOS | | 4.11* | | |
| —RATIOS | | | | |
| SPRINGS—TYPE | | LEAF | | |
| —CAPACITY (LBS.) | | 1200 | 1450 | |
| SHOCK ABSORBERS | | STD. | | |
| ENGINE | | 194 SIX | 230 SIX | |
| TRANSMISSION | | 3-SPEED | POWERGLIDE | |
| BRAKES | | HYDRAULIC SELF-ADJUSTING | | |
| ELECTRICAL | | BATTERY | 44 AMP.-HR. | 70 AMP.-HR. |
| GENERATOR | | 32 AMP. | 42, 61, 62 | |
| FRAME | | UNITIZED BODY-FRAME | | |
| WHEELS & TIRES | | DISC WHEELS—TYPE | 5-STUD | |
| —RIM WIDTH (IN.) | | | 5.50J | 5.50K, 5.0J |
| TUBELESS TIRES | | | 6.50-13 | 7.00-13 |
| | | | 2-PLY (4PR) | 4-PLY (8PR) |
| | | | | 7.00-13 8PR |
| | | | | 7.00-14 6PR |
| | | | | 7.00-14 8PR |

Equipment shown in blue optional at extra cost.

*Available with Positraction differential.

▲Passenger car-type tires.

■Truck-type tires.

CHEVROLET SPORTVAN

Chevy's Sportvan is essentially the same vehicle as a Chevy-Van, but with some significant differences. Ten more windows, for example, offer a full expansive view from any direction. Wide-opening twin doors on the right side open directly into the passenger compartment where you may add one or two additional seats. For complete information and specifications on all three Sportvan models, see the 1966 Chevrolet Station Wagon catalog.



All illustrations and specifications contained in this literature are based on the latest product information available at the time of publication. The right is reserved to make changes at any time in prices, colors, materials, equipment, specifications and models, and also to discontinue models. CHEVROLET MOTOR DIVISION OF GENERAL MOTORS CORPORATION, DETROIT, MICHIGAN, LITHO IN U.S.A.