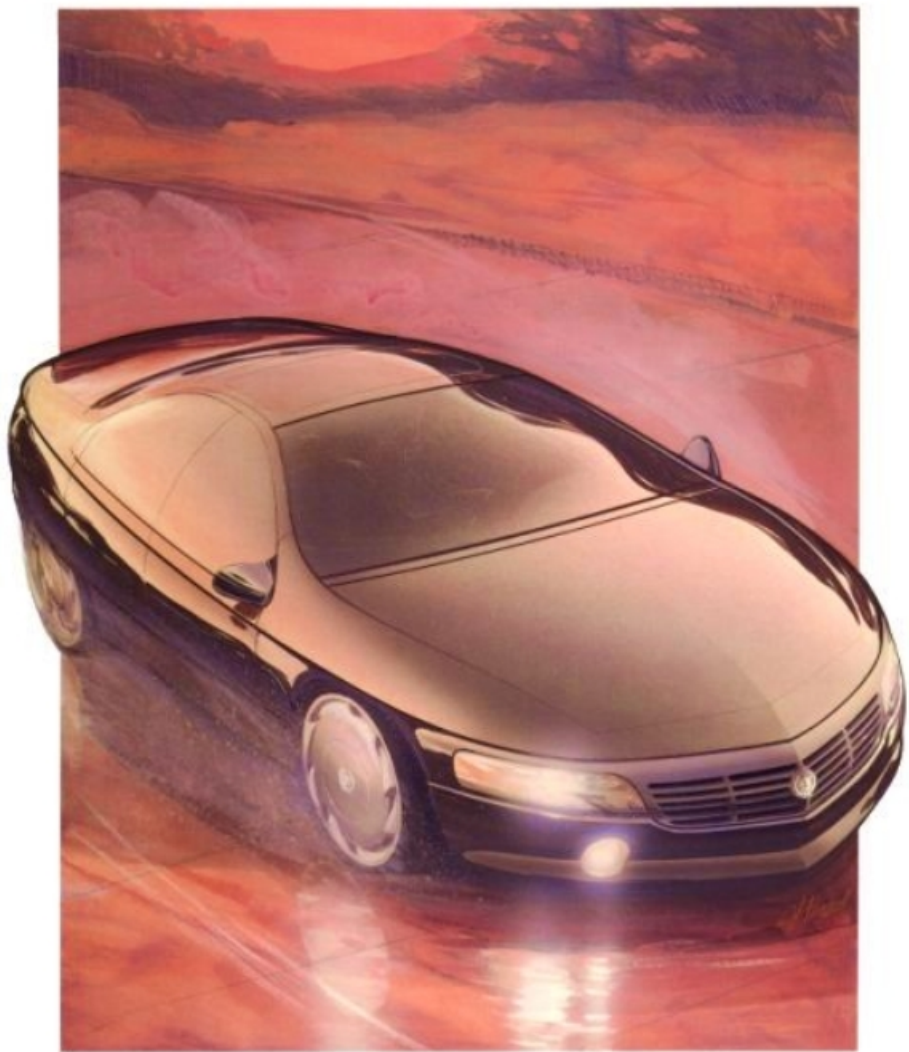


AURORA



Cadillac

AURORA

SHOW SCHEDULE

<u>SHOW</u>	<u>LOCATION</u>	<u>DATE</u>
North American Intl. Auto Show	Cobo Hall Detroit, Michigan	January 6-14, 1990
Chicago Auto Show	Mc Cormick Place Chicago, Illinois	February 10-18, 1990
Geneva Auto Show	Palexpo, Grand Saconnex Geneva, Switzerland	March 6-18, 1990
New York Intl. Auto Show	Javits Convention Center New York, New York	April 14-22, 1990



AURORA

SPECIFICATIONS

FOR RELEASE: JANUARY 3, 1990

VEHICLE

Front engine, all-wheel-drive four-door high performance sedan.

ENGINE

High-output longitudinally-mounted V8 aluminum block, iron cylinder liners, cast iron cylinder heads.

Bore x stroke	3.62 x 3.31 in. (92.0 x 84.0 mm)
Displacement.....	275 cu. in. (4467 cc)
Compression ratio.....	9.0:1
Power output	200 bhp (149 kW) @ 4400 rpm
Torque	270 lbs.-ft. (366 Nm) @ 3200 rpm
Fuel delivery	Sequential multi-port electronic fuel injection
Fuel requirement	Premium unleaded
Valve train.....	2 valves/cylinder, chain-driven cam in block, pushrods, roller followers with hydraulic lifters.

DRIVETRAIN

All-wheel-drive, open front, center and rear differentials with traction control on all wheels.

TRANSMISSION

Four-speed automatic with overdrive (THM 700 R4).

<u>Gear</u>	<u>Ratio</u>
1st.....	3.06
2nd.....	1.63
3rd.....	1.00
4th.....	0.70
reverse.....	2.29
final drive.....	3.06

TRANSFER CASE

Cast aluminum gearcase incorporating torque tube flange. Bevel gear inter-axle differential with viscous coupling. Three gear transfer set. 50/50 torque split.

- more -



REAR PROPELLER SHAFT

Aluminum tube enclosing solid drive shaft with single Cardan universal joints.

FRONT PROPELLER SHAFT

Open tubular shaft with constant velocity joints.

FRONT DRIVE

Aluminum gearcase integral with engine sump. Spiral bevel final drive gears. Two gear offset drives to front drive axles. Open bevel gear front axle differential. Constant velocity front drive axles. Ratio 3.06.

REAR AXLE

Cast aluminum gearcase incorporating torque tube flange. Open bevel gear rear axle differential. Constant velocity rear drive axles. Ratio 3.06.

DIMENSIONS AND CAPACITIES

Curb weight.....	3,500 lbs.
Wheelbase.....	112.2"
Track, front.....	59.0"
rear.....	60.6"
Length.....	190.9"
Width overall.....	74.0"
Height.....	55.3"
Headroom, front.....	37.9"
Headroom, rear.....	37.8"
Legroom, front.....	43.0"
Legroom, rear.....	37.2"
Hiproom, front.....	53.0"
Hiproom, rear.....	54.8"
Shoulder room, front.....	58.6"
Shoulder room, rear.....	57.8"

STEERING, SUSPENSION, BRAKES

Steering type..... Recirculating ball, speed-sensitive power assist.

Front suspension

MacPherson struts, electronically controlled variable orifice shock absorbers.

Rear suspension

Fully independent, transverse monoleaf springs, front and rear integral electronic variable orifice shocks.

Wheels.....	Cast alloy, 18 x 7 in.
Tires.....	Goodyear 225/55 R18
Brakes, front.....	10.25 x 1.0 in. (260.4 x 25.4 mm) vented discs
Brakes, rear.....	10.25 x 0.5 in. (254.0 x 12.7 mm) solid discs
	Bosch anti-lock braking system (ABS) standard.

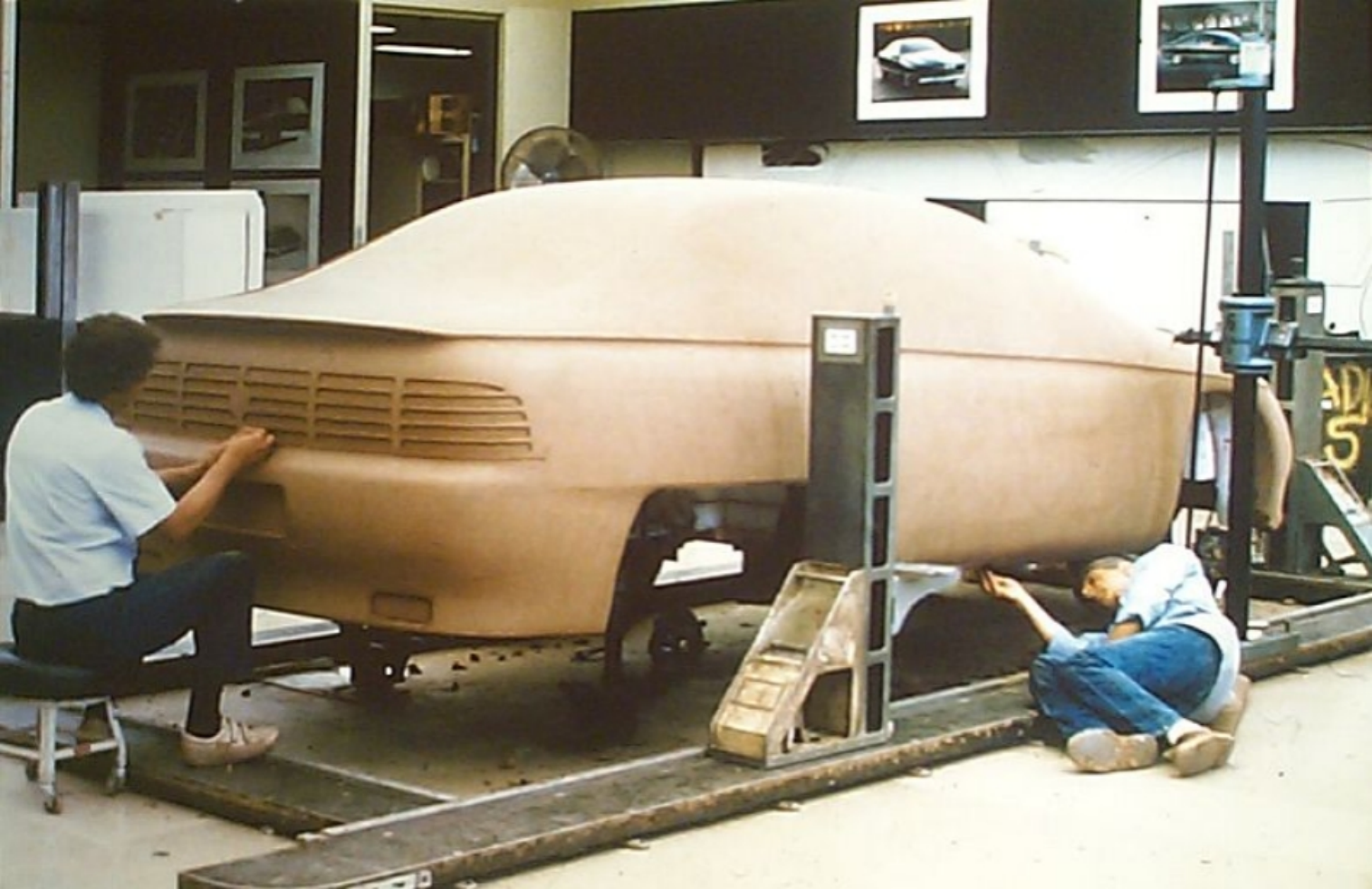




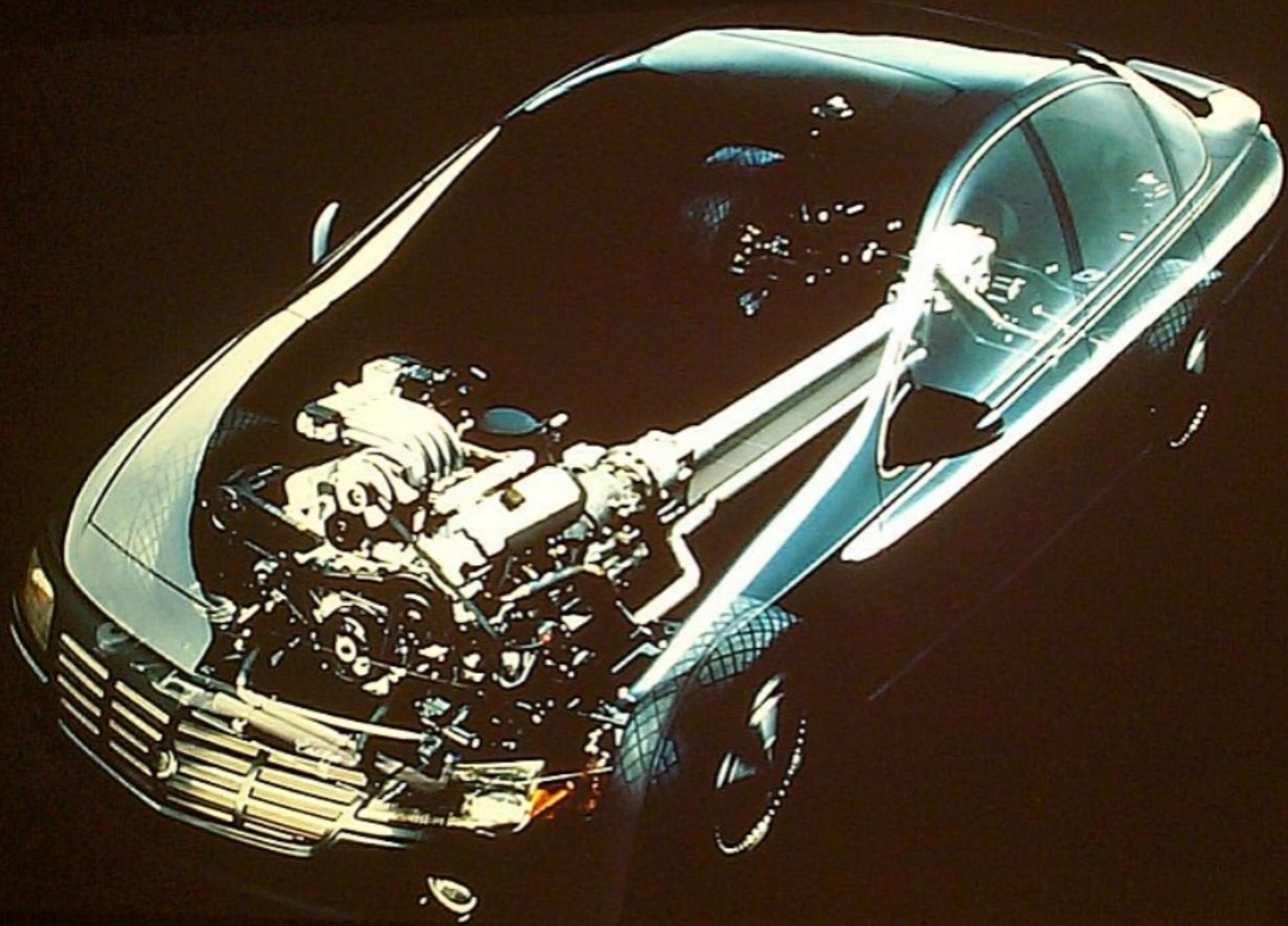




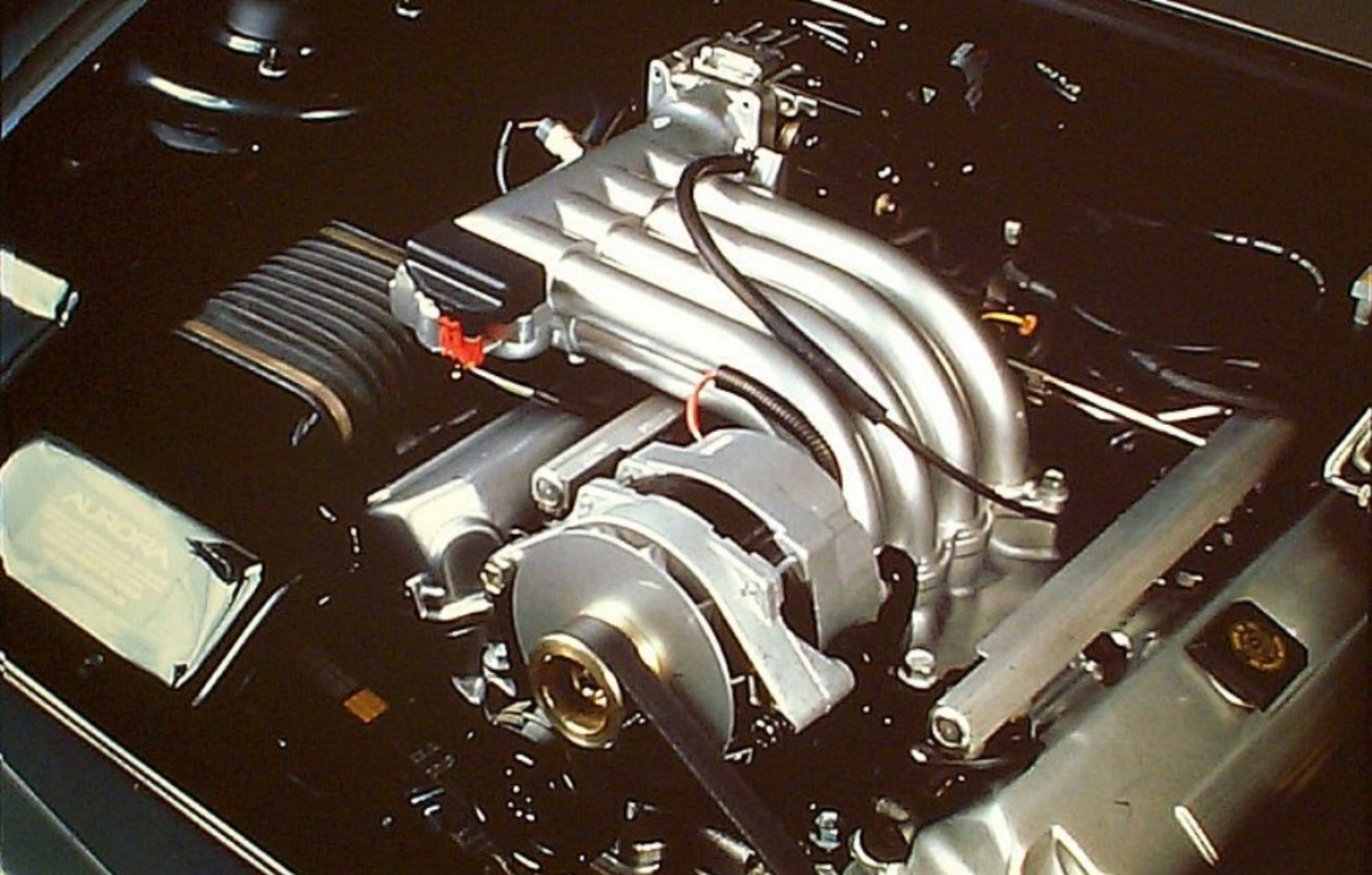
































Cadillac

AURORA

CATERpillar MOTOR CAR COMPANY

Cadillac



AURORA

CADILLAC MOTOR CAR DIVISION