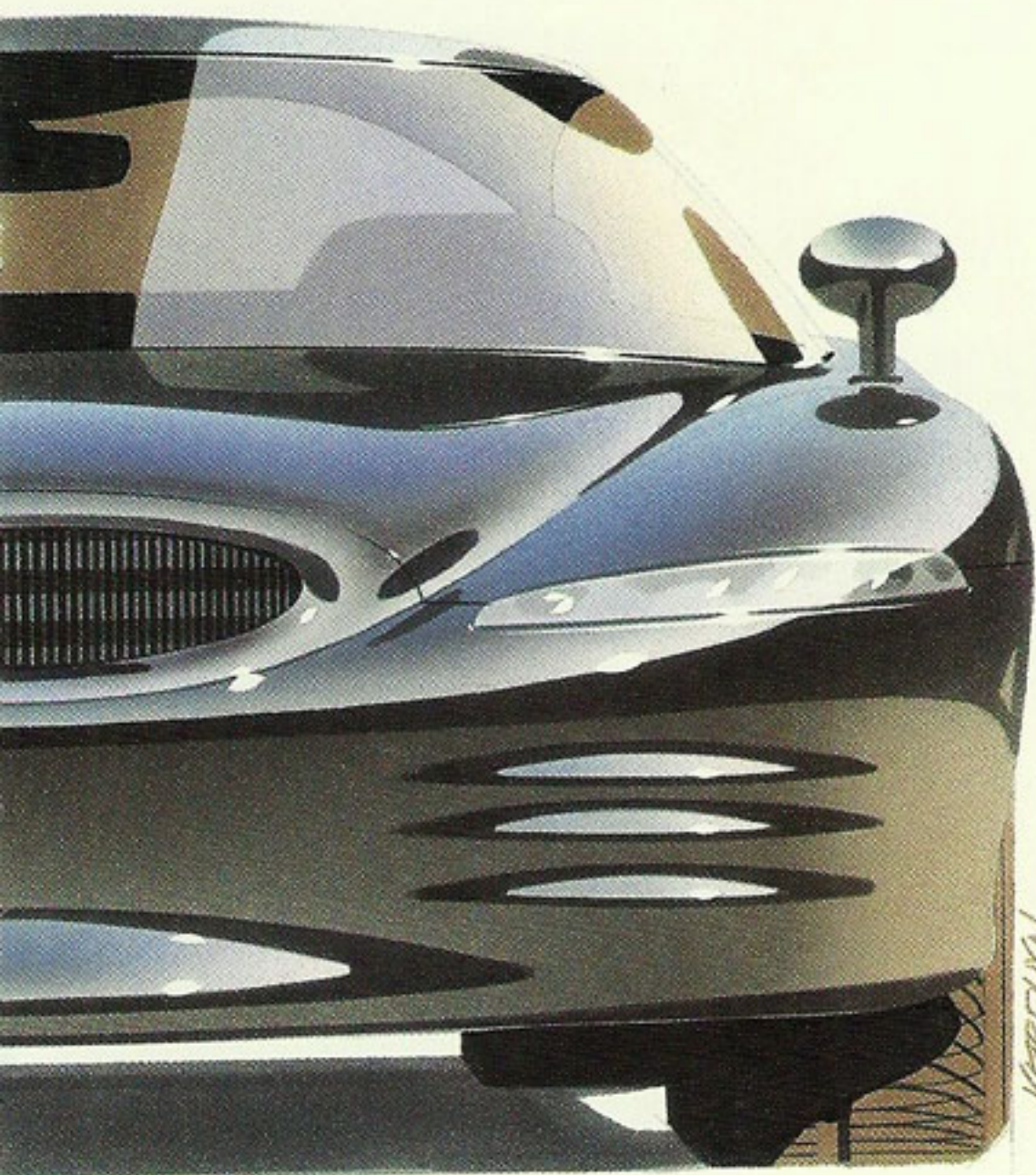


C H R Y S L E R

# THUNDERBOLT

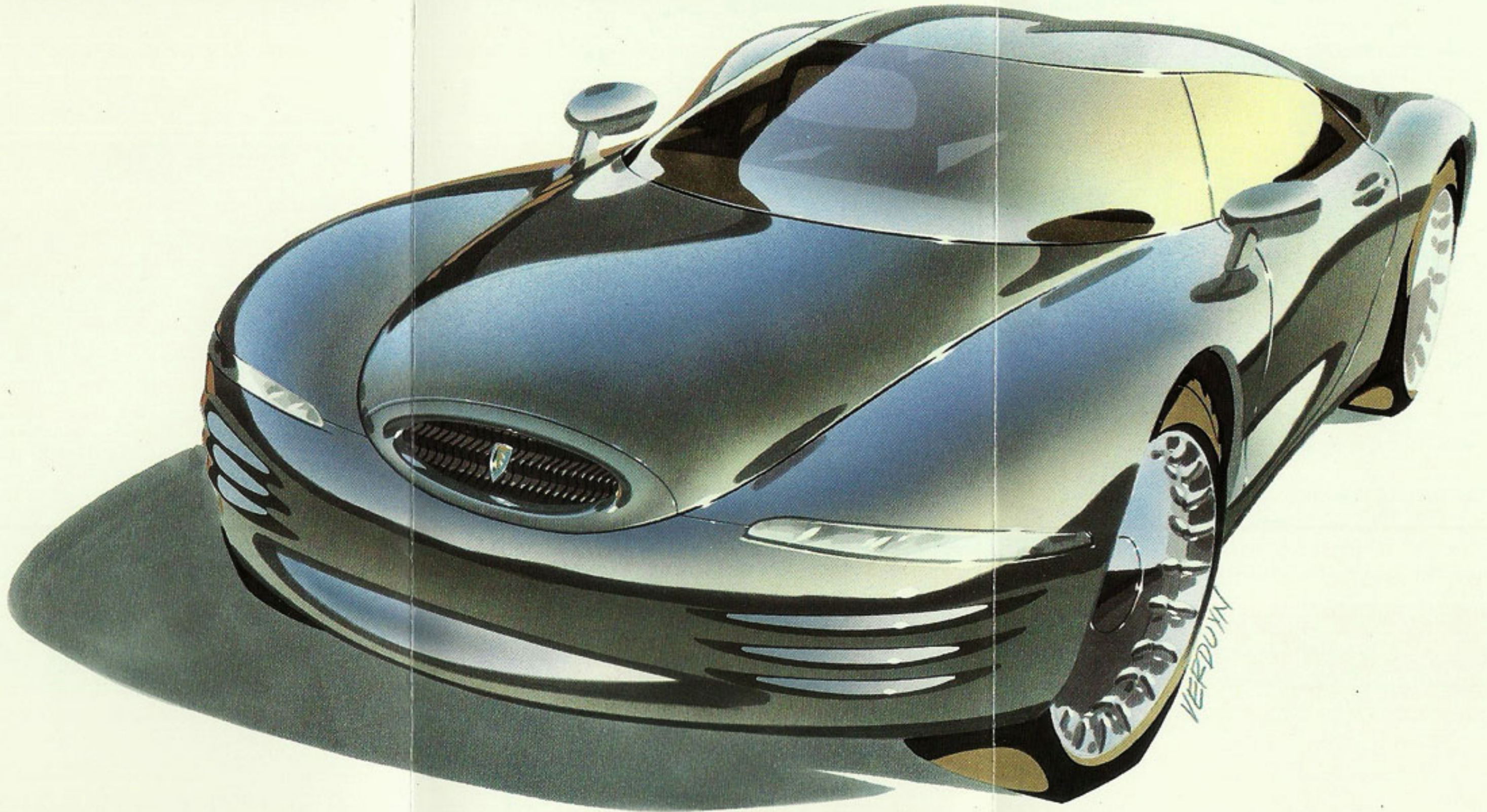
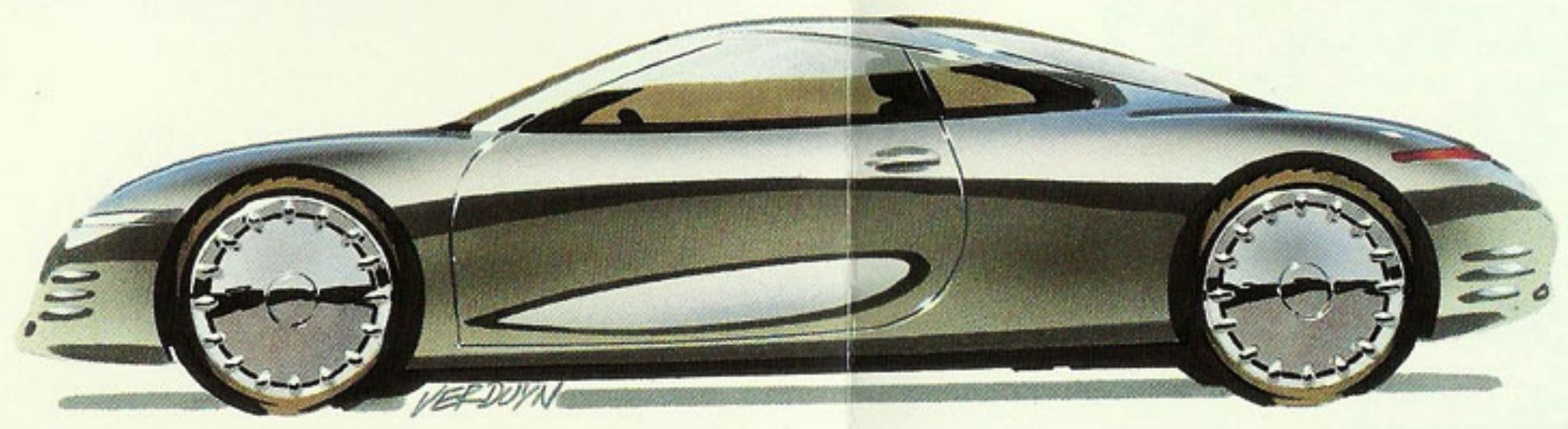


AN AUTOMOTIVE CONCEPT



C H R Y S L E R

# THUNDERBOLT





## THE DREAM CAR

Remember dreaming of that special car? A car so unique and so elegant it would be a rolling sculpture, a fine work of art? It would be sleek, moving effortlessly and gracefully through the streets, with shapely body panels, a low stance to pounce on any challenge, and plenty of glass for great visibility — to see and be seen.

*That's what Thunderbolt is all about.*

Borrowing styling cues from the 1941 concept car of the same name, Thunderbolt's smoothly sloping lines extend from the hood and trail gracefully to the rear. The wheels are placed close to the corners, giving Thunderbolt a long wheelbase and a wide track, for an exceptionally smooth ride and stable handling, and a roomy interior that comfortably seats four adults.

By its looks, Thunderbolt tells you that it hungers for both the flat-out open road and the twisting turns. Its 4.0-liter, 32-valve, DOHC aluminum V8 engine produces 270 horsepower and tears up the miles easily. It seeks the hairpin turns, and rewards the driver with the utmost handling and stability, thanks to its four-wheel independent suspension and oversized, speed-rated tires.

And because a good driver is an informed driver, Thunderbolt continually relays critical information on all operating systems, and even helps guide the way with a satellite navigational system.

**Chrysler Thunderbolt:**  
Sometimes, dreams come true.

## THUNDERBOLT

### ENGINE

- ▶ 4.0-liter, aluminum V8
- ▶ Dual overhead cams
- ▶ 32 valves
- ▶ 270 horsepower

### TRANSAXLE

- ▶ Four-speed automatic
- ▶ Rear-wheel drive

### BODY

- ▶ Two-door hardtop coupe

### BRAKES

- ▶ Four-wheel disc
- ▶ Antilock
- ▶ Traction control

### SUSPENSION

- ▶ Four-wheel independent

### DIMENSIONS:

- ▶ Wheelbase: 123.5"
- ▶ Overall Length: 192.9"
- ▶ Overall Width: 79.0"
- ▶ Overall Height: 51.2"
- ▶ Front Track: 66.0"
- ▶ Rear Track: 64.3"
- ▶ Tire Size Front: 275/40R19
- ▶ Tire Size Rear: 335/35R20

*About this flyer: The vehicle described in this literature is an experimental concept car under continuing development. We have tried to make this information as complete and accurate as possible. However, since the time of printing, some of the information you'll find here may have been updated.*

