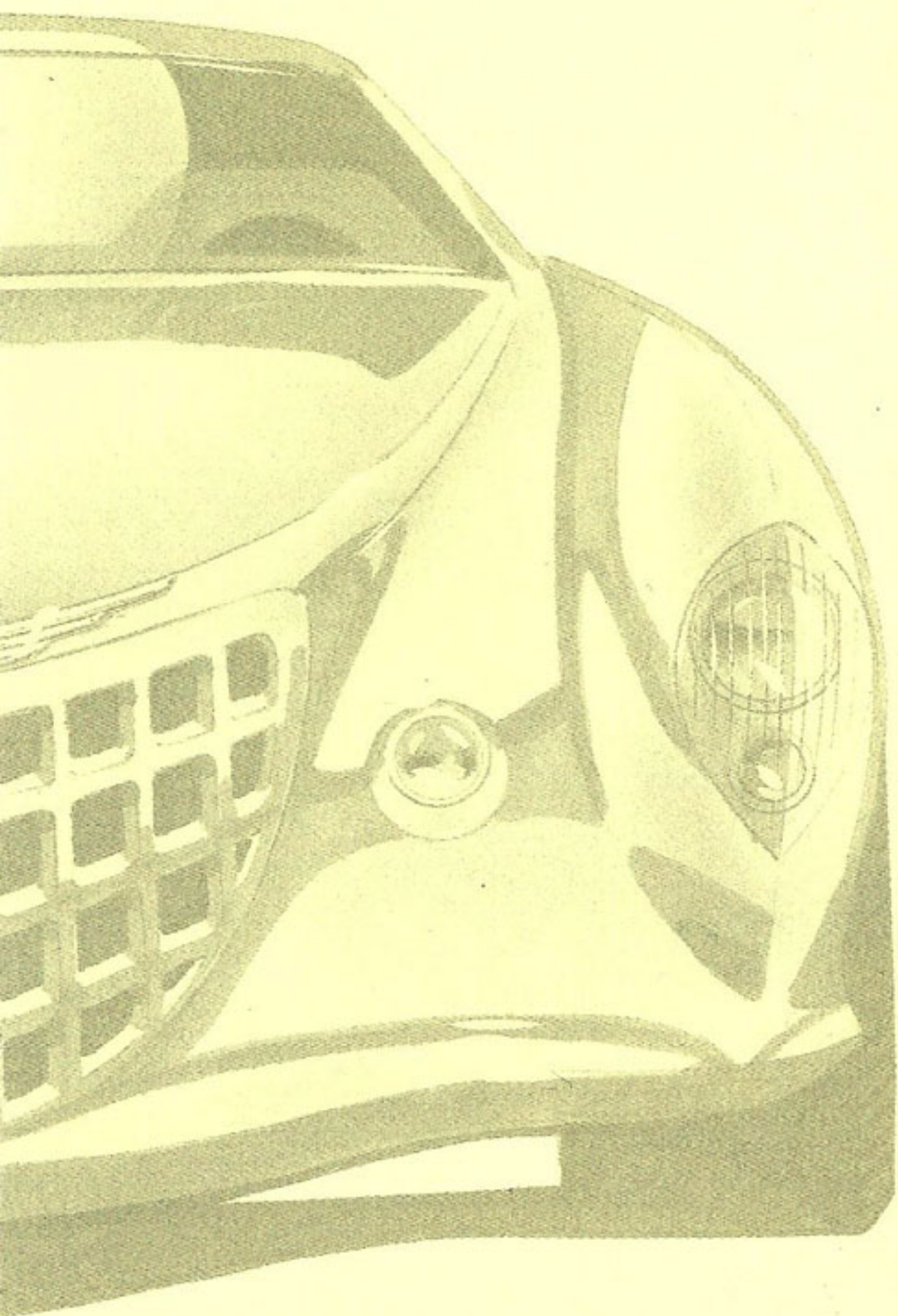


C H R Y S L E R

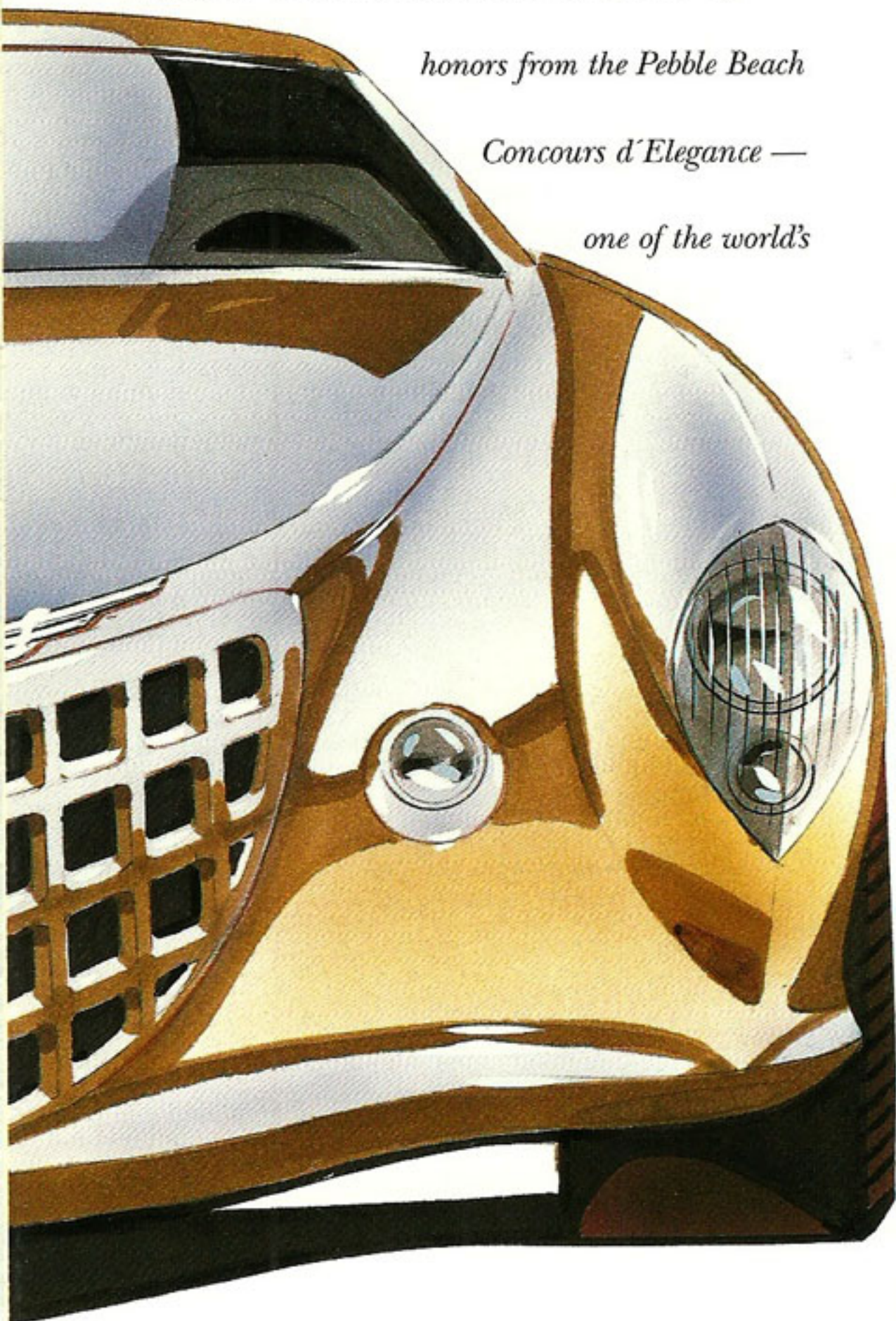
P H A E T O N



CHRYSLER PHAETON

The Chrysler Phaeton embraces and contemporizes elegant, classic design cues from historic touring automobiles of the '30s, '40s and '50s. Drawing much of its inspiration from the show-stealing 1940 Chrysler Newport parade car, the imposing Chrysler Phaeton four-door hardtop convertible is just the sort of car that's bound to drive home with top

*honors from the Pebble Beach
Concours d'Elegance —
one of the world's*



most prestigious automotive exhibitions. Like the Newport, the Phaeton flaunts expressive flowing lines with a handcrafted coachwork quality, complemented by a dual-tone Champagne Pearl Metallic finish. Twin windshields, an ornate grille and machine-polished wheels and trim round out the exterior fineries.

Richness, comfort and attention to detail are apparent throughout Chrysler Phaeton's interior. Amenities include cream leather with brown leather trim, woven leather inserts, satin metal touches and Zebrano wood accents. Front- and rear-passenger compartments feature luxurious seating, armrests and center consoles. Along with a retractable windshield, travelers in back are privy to vehicle performance through a set of speedometer and tachometer gauges. Sporting 22-inch tires and aluminum wheels, a Viper-like rear-drive suspension and an extraordinary 425-horsepower 5.4-liter 48-valve V12 aluminum engine, Chrysler Phaeton is a high-tech blast derived straight from the past.

PHAETON SPECIFICATIONS

BODY

Dual-cowl four-door
All-steel body-on-frame construction

ENGINE

5.4-liter 48-valve V12
Aluminum

POWER TRAIN

Four-speed automatic transmission
Rear-wheel drive
Dana 40 rear axle

SUSPENSION

Front modified double-wishbone
Rear independent double "A" arm

TIRES/WHEELS

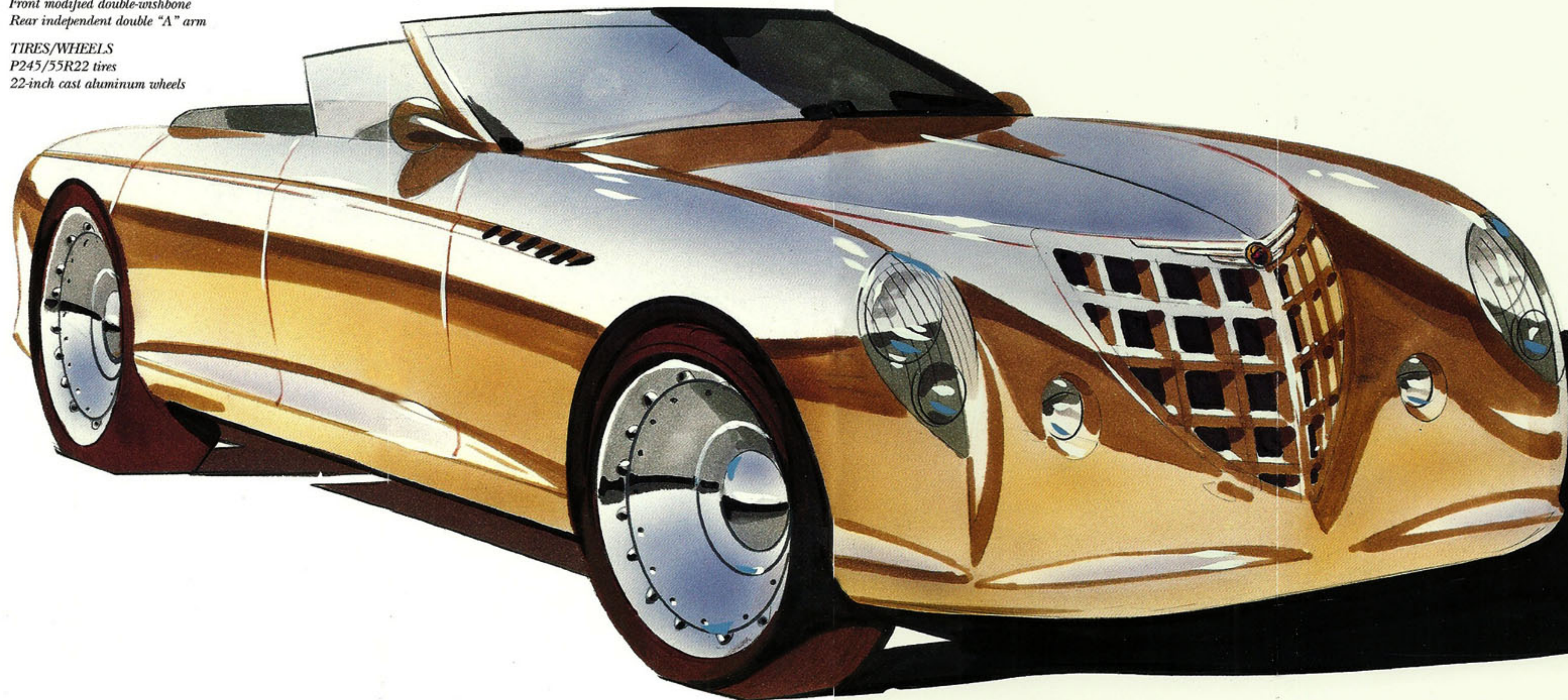
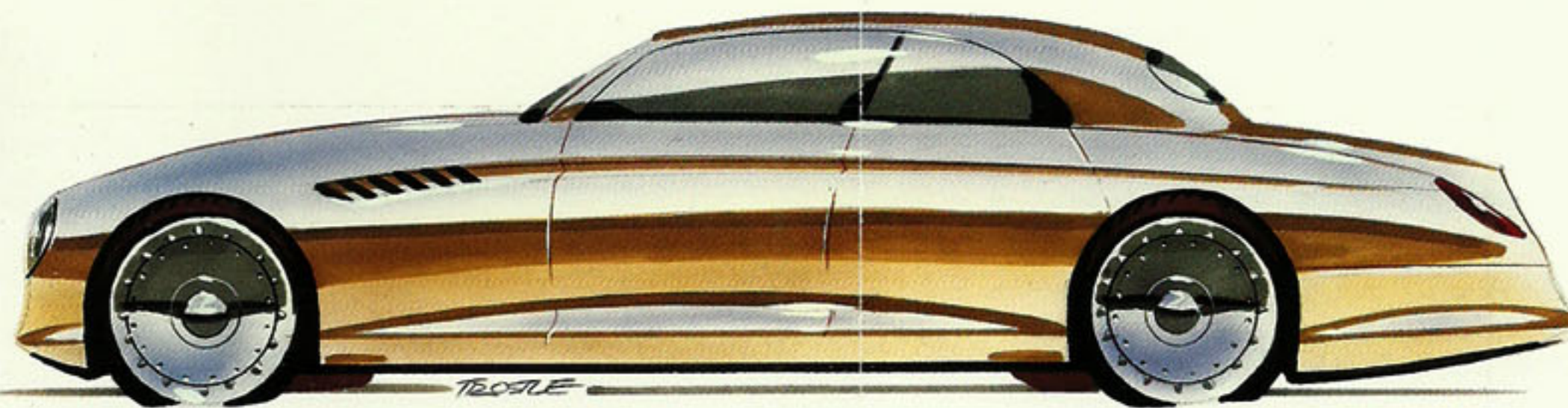
P245/55R22 tires
22-inch cast aluminum wheels

BRAKES

Four-wheel disc antilock

DIMENSIONS

Wheelbase.....132.0 inches
Overall length.....215.0 inches
Overall width.....78.0 inches
Overall height.....55.0 inches
Front track.....63.0 inches
Rear track.....61.5 inches





FOR MORE INFORMATION ON

CHRYSLER PRODUCTS:

1-800-4-A-CHRYSLER

<http://www.chryslercars.com>

About this brochure: The vehicle described in this literature is an experimental concept car under continuing development. We have tried to make this information as complete and accurate as possible. However, since the time of printing, some of the information you'll find here may have been updated.

Printed 12/96

The paper in this brochure is recyclable.