

VENUE

2021



A bit about us.

With Hyundai, you can really have it all.

Our company believes in pushing the boundaries and challenging conventional thinking. Our very name, “Hyundai”, stands for modernity in the Korean language and it is this one word that helps represent everything we stand for. We don’t approach vehicle development in a traditional way. Our company is structured differently. We think differently. We find the modern way. It’s our mission to offer top quality, feature-rich vehicles at an affordable price.

We offer elite quality through meticulous design and painstaking craftsmanship. Our three design centres in Korea, the U.S. and Europe compete against each other to bring you cutting-edge designs — designs that not only look stunning but are also aerodynamic and fuel efficient.

We are the only global automaker to manufacture our own Advanced High-Strength Steel because, simply put, we just weren’t satisfied with what was available.

We test our vehicles in areas like the Arctic, our proving grounds in the Mojave Desert and on Germany’s world-famous Nürburgring circuit to deliver the durability and reliability you demand. And not only do we package our vehicles with advanced safety and technology, we back all our vehicles with one of the best automotive warranties in the industry. This means you really can have it all, quality and value together.



Venue SUPERSTRUCTURE™ shown,
made with our Advanced High-Strength Steel.



The VENUE.

An urban adventurer, the Venue has a strong yet sophisticated SUV profile that radiates road presence. With its available features like Forward Collision-Avoidance Assist with Pedestrian Detection and Blind-Spot Collision Warning, take on the hustle of the concrete jungle with confidence.

The Venue is a trend-setter that offers a number of standard features such as:

- ✓ Heated front seats
- ✓ 8.0" touch-screen display
- ✓ Android Auto™ and Apple CarPlay™
- ✓ Heated side mirrors with integrated turn signal indicators

Express your sense of style.

Modern lines and bold design elements make every entrance a head-turner in the Venue. Express your own sense of style with a range of fun and vibrant colours, plus the option to choose trendy two-tone colour accents on select models. Distinctive wraparound headlights flow into a strong side character line that continues through to the tail lights. Available 17" alloy wheels with a strikingly unique spoke pattern heighten the Venue's bold individuality.



Available two-tone body colour



Available LED headlights
Available 17" alloy wheels

Enjoy your space.

The Venue provides practical space for your everyday needs. The convenient rear shelf makes it easy to subdivide your cargo area and then simply tucks away when not in use, maximizing your cargo space. Rear seats also split and fold 60/40 to make room for longer items.



Ultimate model shown with Denim Blue Premium Cloth.



Standard 60/40 split-folding rear seats
Standard 902 L cargo capacity (with rear seats folded down)

Comfort and convenience at your fingertips.

Step inside the Venue and enjoy the features that make the cabin space your favourite place to be. Standard Android Auto™^o and Apple CarPlay™^Δ smartphone connectivity means you can access your favourite apps intuitively from the 8.0" touch-screen display. Listen to your favourite playlist, tune into a podcast or send an "on the way" message via voice command. On cold mornings, commute without the chill thanks to the standard heated front seats and available heated steering wheel. With the convenience of the available proximity key with remote start capability, the Venue can make every journey a truly seamless experience.



Available power sunroof



Wireless Apple CarPlay™ and Android Auto™

Wireless smartphone connectivity via Apple CarPlay™^Δ and Android Auto™^o is a new 2021 feature standard on Essential, Preferred and Trend models. The Ultimate model features Apple CarPlay™^Δ and Android Auto™^o with a cable connection required.



Standard heated front seats
Standard 8.0" touch-screen display



Available heated steering wheel
Available proximity keyless entry with push-button ignition and remote start



Explore your city.

From weekend fun to your daily commute, the Venue will get you there efficiently with a 121 horsepower Smartstream G1.6 litre engine. Choose between the standard 6-speed manual transmission or available Smartstream Intelligent Variable Transmission — designed to replicate the natural acceleration of conventional automatic shifting gears with the added benefit of great fuel efficiency. Take on winter weather with confidence by activating the available snow mode. This intuitive traction feature can distinguish between packed and deep snow conditions on the road and adjust traction accordingly for optimal grip to improve handling during winter driving.

Hyundai SmartSense™

Active safety is especially important on hectic city streets, and the Venue surrounds you with our available Hyundai SmartSense™ safety technologies to help alert you to, and even avoid, unexpected dangers on the road.

Features include available Rear Cross-Traffic Collision Warning¹ to help alert you if a vehicle is approaching from either side when you are reversing out of a tight parking spot, and Forward Collision-Avoidance Assist with Pedestrian Detection² to help detect the risk of a collision and apply emergency braking if needed.

Available features:



Forward Collision-Avoidance Assist with Pedestrian Detection



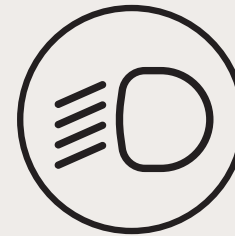
Lane Departure Warning with Lane Keeping Assist



Blind-Spot Collision Warning



Rear Cross-Traffic Collision Warning



High Beam Assist



Driver Attention Warning

Find the VENUE that is right for you.

Essential FWD

Standard equipment includes:

Performance features:

- Smartstream G1.6 engine (121 horsepower, 113 lb-ft torque)
- 6-speed manual transmission
- Front disc and rear drum brakes (front: 280 mm/rear: 203 mm)

Exterior features:

- 15" steel wheels with P185/65R15 all-season tires
- Automatic headlights
- Black front grille
- Body-coloured, heated side mirrors with turn signal indicators

Interior features:

- 8.0" touch-screen display with wireless Apple CarPlay™^Δ and Android Auto™^Ω
- 3.5" LCD multi-information cluster display
- USB and MP3 auxiliary input jacks
- Bluetooth® hands-free phone system with voice recognition
- Steering wheel-mounted audio and phone controls
- Air conditioning with manual temperature control
- Heated front seats
- 60/40 split-fold flat rear seats with adjustable head restraints
- Rearview camera with dynamic guidelines
- Power windows with driver's auto-down
- 6-way adjustable driver's seat
- Cloth seats
- Driver's sliding sunvisor
- Passive temperature control heater
- Rear cargo net hooks
- HD/AM/FM/MP3 audio system with 4 speakers
- Tilt-and-telescopic steering wheel
- Two-stage adjustable trunk floor with retractable rear cargo cover

Safety features:

- Remote keyless entry with alarm
- Anti-lock Braking System with Electronic Brake-force Distribution
- Hill-start Assist Control
- Vehicle Stability Management with Electronic Stability Control and Traction Control System
- Temporary spare tire
- Tire Pressure Monitoring System
- 6 airbags

Optional:

- Smartstream Intelligent Variable Transmission (IVT) with cruise control

Optional (with Smartstream IVT only):

- Two-tone exterior paint (includes roof, side mirrors and exterior body accents)

Preferred FWD

Includes **Essential FWD** standard equipment plus:

Performance features:

- Smartstream Intelligent Variable Transmission (IVT) with cruise control
- Drive Mode Select with snow mode

Exterior features:

- 15" aluminum alloy wheels with P185/65R15 all-season tires
- Roof side rails

Interior features:

- Heated steering wheel
- Leather-wrapped steering wheel and shift knob
- Proximity keyless entry with push-button ignition and remote start
- Cloth seating, stitched material
- Sliding armrest, front centre console

Safety features:

- Blind-Spot Collision Warning with Lane Change Assist
- Rear Cross-Traffic Collision Warning
- Forward Collision-Avoidance Assist with Pedestrian Detection
- Driver Attention Warning
- Lane Departure Warning with Lane Keeping Assist
- High Beam Assist

Optional:

- Two-tone exterior paint (includes roof, side mirrors and exterior body accents)

Trend FWD

Includes **Essential FWD** standard equipment plus:

Performance features:

- Drive Mode Select with snow mode
- Smartstream Intelligent Variable Transmission (IVT) with cruise control

Exterior features:

- 17" aluminum alloy wheels with P205/55R17 all-season tires
- Power sunroof
- Roof rails

Interior features:

- Heated steering wheel
- Leather-wrapped steering wheel and shift knob
- Proximity keyless entry with push-button ignition and remote start
- 6-speaker audio system, including 2 tweeters
- Additional USB port (1)
- Cloth seating, stitched material
- Fixed armrest, front centre console

Safety features:

- Blind-Spot Collision Warning with Lane Change Assist
- Rear Cross-Traffic Collision Warning

Optional: Urban Edition package

Includes **Trend FWD** equipment* plus:

- LED daytime running lights
- LED headlights with active cornering lights
- Premium cloth (includes Black, Grey-Lime and Denim Blue options) and interior colour accents
- Two-tone exterior paint (includes roof, side mirrors and exterior body accents)
- Front passenger seatback pocket

*Does not include power sunroof

Ultimate FWD

Includes **Preferred FWD** standard equipment plus:

Performance features:

- 4-wheel disc brakes (front: 280 mm/rear: 262 mm)

Exterior features:

- 17" aluminum alloy wheels with P205/55R17 all-season tires
- Power sunroof
- Chrome front grille
- LED daytime running lights
- LED headlights with active cornering lights

Interior features:

- 8.0" touch-screen display with Apple CarPlay™^Δ and Android Auto™^Ω, and navigation system
- Bluelink® connected vehicle system^Ω
- SiriusXM™^Δ
- Automatic temperature control
- Power windows with driver's auto-up/down
- 6-speaker audio system, including 2 tweeters
- Additional USB port (1)
- Premium cloth (includes Black, Grey-Lime and Denim Blue options) and interior colour accents
- Front passenger seatback pocket

Colours and wheels.

Exterior colours*



Polar White



Space Black



Intense Blue



Fiery Red



Typhoon Silver



Galactic Grey
Available on Trend and Ultimate models only



Cosmic Grey
Available on Ultimate model only



Denim Blue
Available on Ultimate model only

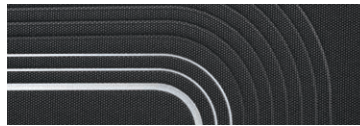
Interior colours*



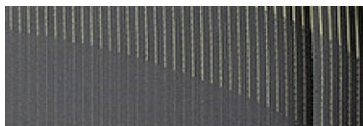
Black Cloth
Standard on Essential model



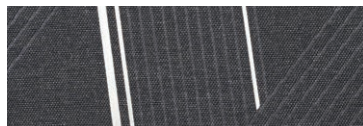
Black Stitched Cloth
Standard on Preferred and Trend models



Black Premium Cloth
Standard on Trend model with Urban Edition package (Fiery Red, Typhoon Silver and Galactic Grey exterior colours only) and Ultimate model



Grey-Lime Premium Cloth
Standard on Trend model with Urban Edition package (with Cosmic Grey exterior colour only)



Denim Blue Premium Cloth
Standard on Trend model with Urban Edition package (with Polar White, Space Black, Intense Blue and Denim Blue exterior colours only)
Available on Ultimate model (with Intense Blue and Denim Blue exterior colours only)

Two-tone exterior colours*

The Essential, Preferred and Trend model with Urban Edition package feature contrasting two-tone body colour accents that heighten the Venue's style, including the roof, side mirrors and details along the wheel arch, door garnish and bumper areas. Choose between the following to customize your Venue.



Galactic Grey with Space Black roof
Not available on Essential model



Fiery Red with Space Black roof
Not available on Essential or Preferred models



Intense Blue with Space Black roof
Not available on Essential or Preferred models



Typhoon Silver with Space Black roof
Not available on Preferred model



Polar White with Space Black roof



Denim Blue with Polar White roof
Not available on Essential or Preferred models



Space Black with Polar White roof
Not available on Essential or Preferred models



Cosmic Grey with Acid Yellow roof
Not available on Essential model

Wheels



15" steel wheel
Standard on Essential model



15" alloy wheel
Standard on Preferred model



17" alloy wheel
Standard on Trend and Ultimate models

*Exterior, interior and roof colour options and/or availability may change without notice. Choice of interior colour is dependent on model and/or exterior colour selection. Colours shown are for reference only and may vary from the actual hue. Visit hyundaicanada.com or see your dealer for details.

Accessories.



Accessory frame

An accessory frame makes it quick and easy to attach hitch-mounted cargo equipment, such as bikes and ski racks. Frame not intended for towing.



Premium all-weather cargo tray

Protect your interior cargo area with style. This durable, custom-fit premium cargo tray protects from spills and messy loads while helping keep your cargo area looking new for years to come.



Cross rails

This durable, quick-locking roof rack system lets you transport cargo easily, without sacrificing interior room.



Premium all-weather floor liners

Premium all-weather floor liners were designed to cover the interior carpet, providing maximum protection against the elements that other mats cannot offer. Their unique and durable design features a non-slip surface for added comfort and a long-lasting premium look. Remove carpet mats prior to installation.

5 YEAR	100,000 km Comprehensive Limited Warranty*
5 YEAR	100,000 km Powertrain Warranty
5 YEAR	100,000 km Emission Warranty
5 YEAR	Unlimited km Roadside Assistance Program**

One of the best-backed warranties in Canada.

You will see that a number of our vehicles have received multiple awards from the most reputable third-party organizations, so you can take their word when it comes to the quality of our vehicles. This quality is equally matched by the quality of our warranty. We stand confidently behind our products to give you ultimate peace of mind with a 5-year/100,000 kilometre Comprehensive Limited Warranty[†]. We also provide a 5-year/Unlimited kilometre Roadside Assistance Program^{**} featuring flat tire changing, lockout service and more. Just one toll-free call away, 24 hours a day.

[™]/[®]The Hyundai name, logos, product names, feature names, images and slogans are trademarks owned or licensed by Hyundai Auto Canada Corp.. Specifications, features, illustrations, accessories, materials and equipment and all other information shown in this brochure are based on the latest information available at the time of publication. Although descriptions are believed to be correct, accuracy cannot be guaranteed. Hyundai Auto Canada Corp. reserves the right to make any changes or modifications at any time, without notice or obligation, including, without limitation, in colour, specifications, features, accessories, materials, equipment and models. Some vehicles are shown with optional equipment. All Hyundai warranties have no deductible. [†]Hyundai's Comprehensive Limited Warranty coverage covers most vehicle components against defects in workmanship under normal use and maintenance conditions. ^{**}Hyundai's 24-Hour Roadside Assistance Program is a limited service and does not cover certain costs or expenses. Roadside Assistance is not a warranty. ⁴Apple CarPlay[™] may not be available on all devices and may not be available in all countries or regions. Visit www.apple.com for further details and any applicable limitations. Apple and Apple CarPlay are trademarks of Apple Inc.. ⁵Android Auto[™] may not be available on all devices and may not be available in all countries or regions. Visit www.android.com for further details and any applicable limitations. Android and Android Auto are trademarks of Google Inc.. ⁶The SiriusXM[™] name is a trademark of SiriusXM Satellite Radio Inc.. Vehicle is equipped with the ability to access SiriusXM radio. Does not include subscription. ⁷Available on select models only. Bluelink[®] includes 3 years of service without charge. The Bluelink service is available for new vehicle purchases and leases subject to the Bluelink subscription terms and conditions. Only use Bluelink and corresponding devices when safe to do so. Cellular and GPS coverage is required. Features, specifications, and fees may vary by model and are subject to change. For more on details and limitations, visit hyundaicanada.com or your authorized Hyundai dealer. ⁸Never rely exclusively on the Rear Cross-Traffic Collision Warning. Always look over your shoulder and use your mirrors to confirm rear clearance. There are limitations to the function, detection, range and clarity of the system. The system may not detect every vehicle. This system does not detect stationary objects. Vehicle must be in reverse and has to be travelling at 10 km/h or less. See Owner's Manual for further details and limitations. ⁹Forward Collision-Avoidance Assist (FCA) is designed to detect vehicles that are directly in front of the vehicle. FCA will not detect all vehicles and objects. FCA may not work on winding or hilly roads, during certain weather conditions such as rain, snow, fog and any other times of limited visibility. FCA initiates full braking at speeds between 8 and 60 km/h and 25 and 60 km/h (vehicle detection, depending on whether vehicle ahead is in motion) or 8 to 60 km/h (pedestrian detection). FCA will not detect all pedestrians under certain conditions. See Owner's Manual for detailed descriptions of example conditions in which FCA may not detect a pedestrian. FCA is not a substitute for safe driving. Always check your surroundings when driving. See Owner's Manual for further details and limitations. Bluetooth[®] word mark and logos are registered trademarks owned by Bluetooth SIG, Inc.. All other trademarks and trade names are those of their respective owners. Some images shown with special graphic effects.

Hyundai Auto Canada Corp.
hyundaicanada.com

