

2022

# SANTA CRUZ



# Bend the rules far enough, and what you create is entirely new.



There's nothing else like it. It's not a truck. And it's not an SUV. It's the 2022 Hyundai Santa Cruz, a first-of-its-kind Sport Adventure Vehicle. Combining the comforts of a 4-door crossover vehicle with the cargo capacity of an open bed, Santa Cruz is the perfect partner for weekend adventures away, or all the things you do at home. Filled with functional innovations, it's ready to work and play as hard as you do.

Proudly built at our U.S. plant in Alabama, Santa Cruz is a study in contrasts. It's big enough for your friends, family and cargo. But compact enough to fit into a garage. It's nimble enough to use its available HTRAC All Wheel Drive to snag a secluded campsite. Yet flush with technologies that keep you connected to your world – no matter where you roam – and filled

with advanced safety and driver-assist features that help take the stress out of urban jungles.

What else sets Santa Cruz apart from anything else on – or off – the road? Bold styling. The front end projects its sophistication through illumination, with Daytime Running Lights hidden in the parametric jewels of its grille. Visible only when lit, they create a presence all their own.

A wide stance and 18" (or available 20") alloy wheels plant your Santa Cruz to the ground. Horizontal T-shaped LED taillights accentuate the open bed. Embossed into those lamps is "Designed In California" – a statement of our pride in a design group that believed the time had come for an entirely new kind of vehicle.





SANTA CRUZ Limited in Blue Stone

## Power for all of your outlets.

Combine a direct-injection 2.5L engine delivering 191 horsepower with a smooth-shifting 8-speed automatic transmission, and the result is gratifying – quick acceleration coupled with excellent fuel economy. Want to up the fun factor? Santa Cruz offers a turbocharged 281-horsepower engine with 311 lb-ft of torque and an 8-speed Wet Dual Clutch Transmission with paddle shifters. Add a payload capacity exceeding 1,750 pounds<sup>1</sup> and the availability of HTRAC All Wheel Drive with either engine, and the adventure starts where the road ends.

A tight turning radius makes Santa Cruz an urban warrior, nimble in congested traffic and easy to park once you reach your destination. Got some stuff to haul? Self-leveling rear shocks give Santa Cruz the stability to carry heavy cargo in its bed. Got toys to tow? The 2.5L 4-cylinder is tow-rated at 3,500 pounds, while Turbo AWD Santa Cruz models boast a 5,000-pound towing capacity.<sup>2</sup>

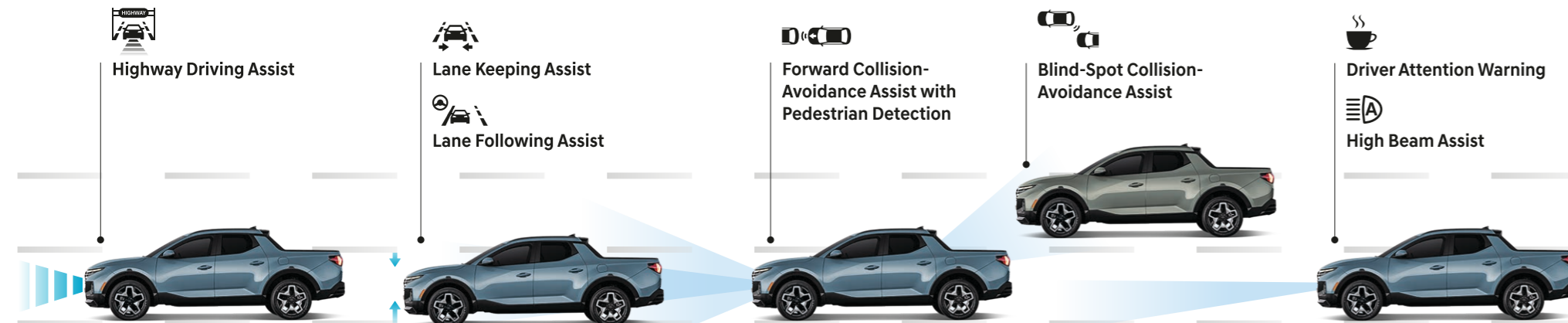
Santa Cruz is also equipped with a suite of Hyundai SmartSense safety tech.<sup>3</sup> We made Forward Collision-Avoidance Assist with Pedestrian Detection standard.<sup>4</sup> An available Blind-Spot View Monitor helps you detect vehicles lurking in your blind spots.<sup>5</sup> Rear Cross-Traffic Collision-Avoidance Assist and a Surround View Monitor are also available to help negotiate close encounters in parking lots.<sup>6</sup>

A must-have for long trips, Santa Cruz Limited's Highway Driving Assist helps keep you in your lane at a safe distance from the traffic ahead while automatically adjusting your cruise control for changing speed limits.<sup>7</sup>



HTRAC All Wheel Drive

### Hyundai SmartSense Technologies



Trailer pre-wiring and 5,000-lb towing capacity



Blind-Spot View Monitor

<sup>1</sup> Santa Cruz SE payload capacity. <sup>2</sup> Maximum towing capacity with trailer brakes. <sup>3</sup> Safety features vary by model. For details, refer to the Features chart in the back of this brochure or visit HyundaiUSA.com. <sup>4</sup> Forward Collision-Avoidance Assist with Pedestrian Detection is intended to be a supplement to safe driving practices. The system is not designed to detect certain stationary objects such as trees or poles, and may not detect all vehicles or pedestrians under certain conditions. It is a driver assistance system and is not a substitute for safe driving. The driver is responsible for being attentive and maintaining control of the vehicle, and should not wait for the system's alerts before braking as there may not be sufficient time to brake safely. See Owner's Manual for details and limitations. <sup>5</sup> The Blind-Spot View Monitor (BVM) assists the driver in changing lanes by providing a live view of the blind spots on either side of the vehicle and an audible alert if another vehicle is detected. Turn signal must be activated, and other system limitations apply. Do not rely exclusively on BVM. It is the driver's responsibility to be aware of the surroundings and ensure it is clear before changing lanes or directions. See Owner's Manual for details and limitations. <sup>6</sup> Rear Cross-Traffic Collision-Avoidance Assist (RCCA) is designed to notify drivers of approaching cross traffic behind their vehicle. When another vehicle is detected while you are backing out of a parking spot, it provides audible and visual display warnings and applies braking if it senses a collision is imminent. RCCA is active when the vehicle is in reverse gear and backing at a speed less than 6 mph. It only engages during the first activation of reverse gear from park and may not detect all vehicles, depending on the size, angle, distance and speed of the other vehicle. Never rely exclusively on RCCA. Always look over your shoulder and use your mirrors to confirm rear clearance. There are limitations to the function, detection, range and clarity of the system. See Owner's Manual for details and limitations. Surround View Monitor (SVM) is a parking support system. SVM cannot completely eliminate blind spots, may not detect every object and does not warn of moving objects. Always check your surroundings before moving your vehicle. See Owner's Manual for details and limitations. <sup>7</sup> Highway Driving Assist (HDA) is for highway use only and can help maintain a safe distance from the vehicle ahead while keeping your vehicle centered in its lane when lane markings are clearly visible on the road. HDA should not be used in poor weather, heavy or varying traffic, or on winding or slippery roads. HDA will not work under all circumstances and will not prevent loss of control. Driver remains responsible to slow or stop the vehicle to avoid a collision. See Owner's Manual for details and limitations.



## When you're open-minded, new possibilities open up.

Open the door, any door – there are four. You'll see an interior that's a contrast of rugged and refined. Santa Cruz's wraparound dual-cockpit design puts infotainment and connectivity features at your command. Its focal point is a center stack punctuated by an 8" touchscreen with wireless Apple CarPlay®/Android Auto™ smartphone integration.<sup>1</sup>

An available 10.25" digital instrument cluster highlights a high-tech, modern feel throughout the cabin. Slip behind the wheel of Santa Cruz Limited, and a wide 10.25" touchscreen display puts control over the Bose® premium audio system at your fingertips. Dynamic Voice Recognition lets you switch SiriusXM channels using voice commands, or plot your course via a navigation system that includes subscription-free traffic flow and incident data.<sup>2</sup>

But what makes Santa Cruz such a unique vehicle is its open bed. The multi-functional rear bed creates exceptional versatility for carrying cargo. You can haul tall stuff. Valuable stuff. And dirty stuff. Put the tailgate down mid-way, and it becomes an extension of the bed. Integrated bumper steps wide enough for a large boot offer easy access to the open bed.

Need to protect your gear? There's an available lockable tonneau cover. In the floor of the bed, there's also a compartment for dry storage. See that drain plug? It lets you fill the compartment with ice and use it as a cooler. An available 115-volt power outlet caters to electric coolers, too.



Sheet molded composite bed with rail system, adjustable tie-down cleats and LED bed lighting



10.25" digital LCD instrument cluster



Rear under-seat storage tray



Lockable under-bed storage compartment



Integrated multi-level rear bumper steps

<sup>1</sup>Apple CarPlay® is a registered trademark of Apple Inc. Android Auto™ is compatible with Android™ phones running Android 5.0 or higher. Android Auto may not be available on all devices and is not available in all countries or regions. Additional apps may be required. Android and Android Auto are trademarks of Google LLC. <sup>2</sup>Dynamic Voice Recognition varies by unit. Speak in a normal voice and minimize background noise for best results. See Owner's Manual for details and limitations. All SiriusXM services require a subscription sold separately, or as a package, by Sirius XM Radio Inc. after a 3-month trial period. The subscription plan you choose will automatically renew, and you will be charged according to your chosen payment method at then-current rates. Fees and taxes apply. To cancel you must call SiriusXM at 1-866-635-2349. See SiriusXM Customer Agreement for complete terms at siriusxm.com. All fees and programming subject to change. Sirius, XM, SiriusXM and all related marks and logos are trademarks of Sirius XM Radio Inc.

# Turns out the key to happiness isn't actually a key. It's an app.

What Hyundai offers its owners goes well beyond our award-winning vehicles. It includes Bluelink,<sup>®</sup> a range of innovative technologies that enable remarkable connectivity between you and your Santa Cruz.<sup>1</sup>

With the MyHyundai app, you can start your Santa Cruz and adjust climate controls from your office or kitchen using your smartphone, Amazon Echo<sup>®</sup> or Google Home<sup>™</sup> virtual assistant.<sup>2</sup> You can also remotely activate available front seat heating or ventilation, and check to see if you've left a window open, by consulting your smartphone.<sup>3</sup>

Download the available Hyundai Digital Key to your compatible Android<sup>™</sup> smartphone, and you can use it to unlock the front doors and start the engine.<sup>4</sup> You can also assign digital keys to multiple drivers, who can instantly retrieve things like their own personalized radio presets, instrument cluster display preferences, and more.<sup>3</sup>

Every Santa Cruz comes standard with wired or wireless Apple CarPlay<sup>®</sup> and Android Auto,<sup>™</sup> and you can now connect two phones to the audio system simultaneously via Bluetooth streaming. Good to know you can easily keep your digital devices powered up, too. A wireless charging pad is available,<sup>5</sup> and dual front USB charge ports are standard.

## Bluelink



### Automatic Emergency Assistance

Bluelink Connected Care offers 24/7 SOS Emergency Assistance as well as Automatic Collision Notification that calls for help if you're in an accident where your vehicle's airbags deploy.<sup>6</sup>



### On-Demand Diagnostics

Run vehicle diagnostics from your MyHyundai mobile app, report issues at the press of a button and receive maintenance reminders or Monthly Vehicle Health Reports by email.



### Destination Send-to-Car

Use your smartphone to find restaurants or points of interest, then send the destination to Santa Cruz's available navigation system for driving directions before you start your journey.<sup>7</sup>



### Remote Vehicle Controls

Use your smartphone, smart speaker or wearable device to remotely start your Santa Cruz's engine, unlock the doors, set the cabin temperature, and much more.



### Driver Profile Management

You can save your navigation searches, radio presets and cluster display preferences to your Bluelink account, and they can be remotely updated and pushed to your Santa Cruz.<sup>3</sup>



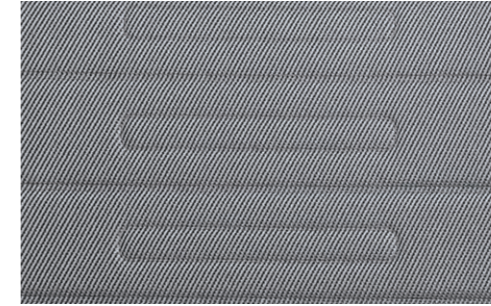
### Remote Vehicle Status

Wondering how much fuel is left in your tank? If your Santa Cruz's doors are unlocked? Your MyHyundai app knows the answers to questions like these, and more.

## Interior Colors



Black Cloth  
SE / SEL / SEL Premium



Gray Cloth  
SE / SEL / SEL Premium



Black Leather  
Limited

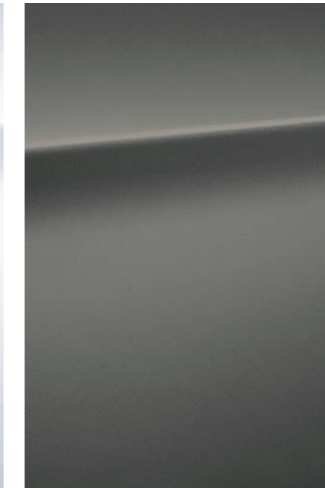


Dark Gray Leather / Orange Accents  
Limited

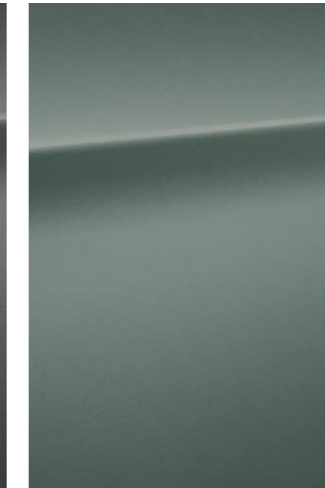
## Exterior Colors



Ice White



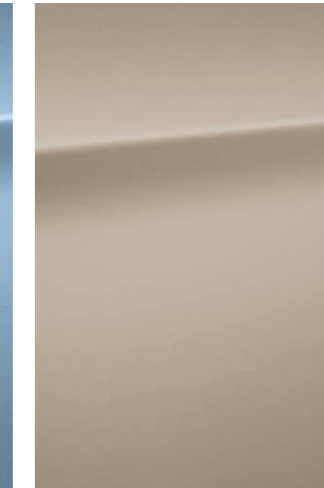
Hampton Gray



Sage Gray



Blue Stone



Mojave Sand



Phantom Black

## Wheels

SE / SEL  
SEL Premium AWD  
18" Alloy Wheel



Limited  
SEL Premium FWD  
20" Alloy Wheel



SANTA CRUZ  
EPA Estimates (City/Highway/Combined)<sup>1</sup>

21/26/23 MPG | SE / SEL  
FWD 8-speed A/T

21/27/23 MPG | SE / SEL  
AWD 8-speed A/T

19/27/22 MPG | SEL Premium / Limited  
AWD 8-speed DCT

<sup>1</sup>EPA estimates for comparison only. Your actual mileage will vary with options, driving conditions, driving habits and the vehicle's condition.

<sup>1</sup>Not available on Santa Cruz SE. The 2022 Hyundai Santa Cruz includes 3 years of the Bluelink Connected Care, Remote and Guidance (factory-equipped navigation required) packages. All trials require an active Bluelink subscription agreement subject to the Connected Services Terms and Conditions. Three-year term starts from the new vehicle date-of-first-use, is available for new vehicle purchases and leases, and is transferable to subsequent owners subject to the Terms and Conditions. Only use Bluelink and corresponding devices when safe to do so. Cellular and GPS coverage is required. Features, specifications and fees are subject to change. For further details and limitations, visit HyundaiUSA.com or your authorized Hyundai dealer. <sup>2</sup>Requires active Bluelink subscription with Remote package. Amazon, Alexa and all related logos and motion marks are trademarks of Amazon.com, Inc. or its affiliates. Google Assistant and Google Home are trademarks of Google LLC. <sup>3</sup>Requires active Bluelink subscription with Remote package. <sup>4</sup>The Hyundai Near Field Communication Digital Key requires a compatible Android smartphone and appropriately equipped 2022 Hyundai Santa Cruz. Not all Android devices are compatible. Santa Cruz vehicle must be equipped with a smart key with push button start, wireless device charging and Audio Video Navigation System 5.0 (or newer) or Display Audio 2.0. Lock and unlock functionality work on the front doors only. See your Owner's Manual for details and limitations. <sup>5</sup>Qi wireless charging function is based on smartphone compatibility and/or specific accessory cases. <sup>6</sup>Bluelink agents will contact existing emergency service responders. <sup>7</sup>Requires navigation-equipped vehicle and active Bluelink subscription with Guidance package.

## SANTA CRUZ SE

Smartstream 2.5L GDI/MPI 4-Cylinder

hp 191  
lb-ft 181



### Popular Features

8" color touchscreen Display Audio system
Wireless Android Auto™/Apple CarPlay®
LED Daytime Running Lights and LED taillights
Sheet molded composite bed with sidewall & underbed storage
Heavy-duty cargo D-rings
Rearview camera with dynamic parking guidelines
Forward Collision-Avoidance Assist with Pedestrian Detection
Lane Keeping Assist and Lane Following Assist

## SANTA CRUZ SEL Premium

Smartstream 2.5L Tu GDI/MPI 4-Cylinder

hp 281  
lb-ft 311



### Popular Features

LED headlights
8-speed Wet Dual Clutch Transmission with paddle shifters
Hyundai Digital Key
Leather-wrapped steering wheel and shift knob
Dual automatic temperature control with Multi-Air Mode
Roof side rails and power sunroof
10.25" digital instrument cluster display
20" wheels (FWD) / 18" wheels (AWD)

Late availability for SEL Premium FWD models

## SANTA CRUZ SEL

Smartstream 2.5L GDI/MPI 4-Cylinder

hp 191  
lb-ft 181



### Popular Features

Proximity Key entry with push button start
Key fob remote engine starter
Heated side mirrors with LED turn signal indicators
Heated front seats
8-way power driver seat and 2-way power lumbar support
Blind-Spot Collision-Avoidance Assist
Rear Cross-Traffic Collision-Avoidance Assist
Bluelink® Connected Car System (3 years complimentary)

## SANTA CRUZ Limited

Smartstream 2.5L Tu GDI/MPI 4-Cylinder

hp 281  
lb-ft 311



### Popular Features

Bose® premium audio system with 8 speakers
Highway Driving Assist and Intelligent Speed Limit Assist
Leather-trimmed seats and ventilated front seats
Heated steering wheel and ambient interior lighting
10.25" high-resolution touchscreen navigation system
Blind-Spot View Monitor and Surround View Monitor
Floor console-mounted rear vents and rear USB charge ports
Smart Cruise Control with Stop & Go

Late availability for Limited FWD models

### SEL Activity Package

Integrated lockable tonneau cover	115V AC power inverter in bed
Power sunroof	Dual C-channel bed-side utility tracks
Roof side rails	Adjustable tie-down cleats
Rear sliding glass window w/ defroster	LED bed lights and interior map lights
10.25" digital instrument cluster display	Wireless device charging

### HTRAC All Wheel Drive SE/SEL Option

HTRAC All Wheel Drive	HTRAC liftgate badge
AWD Lock	

### HTRAC All Wheel Drive SEL Premium/Limited Option

HTRAC All Wheel Drive & AWD Lock	HTRAC liftgate badge
18" wheels (SEL Premium)	5,000-lb towing capacity <sup>1</sup>

### Exterior Dimensions SANTA CRUZ

Wheelbase	118.3 in
Overall Length	195.7 in
Overall Width	75.0 in
Overall Height (with roof rails)	66.7 in
Minimum Ground Clearance	8.6 in

### Open Bed Dimensions SANTA CRUZ

Bed Length (tailgate closed/open)	52.1 / 74.8 in	
Bed Width (max/between wheel house)	53.9 / 42.7 in	
Approach Angle	17.5°	
Departure Angle	23.2°	
Brake Over Angle	18.6°	
Ground Clearance	Bed Gate	50.8 in
	Bed Floor	31.6 in
	Rear Bumper Step (lower/upper/side)	18.1 / 25.2 / 18.9 in

### Interior Dimensions SANTA CRUZ

Headroom – front/rear (without sunroof)	40.7 / 40.1 in
Legroom – front/rear	41.4 / 36.5 in
Shoulder Room – front/rear	57.6 / 56.1 in
Passenger Volume	101.8 cu ft

<sup>1</sup>With trailer brakes

## SANTA CRUZ

Power & Handling	SE	SEL	SEL Prem	Limited
191 hp/181 lb-ft, Smartstream 2.5L GDI/MPI 4-cylinder engine	●	●	–	–
281 hp/311 lb-ft, Smartstream 2.5L Turbo GDI/MPI 4-cylinder engine	–	–	●	●
8-speed automatic transmission with SHIFTRONIC®	●	●	–	–
8-speed Wet Dual Clutch Transmission with paddle shifters	–	–	●	●
Drive Mode Select	●	●	●	●
Self-leveling multi-link rear suspension	●	●	●	●
Hillstart Assist Control / Downhill Brake Control	●	●	●	●
HTRAC All Wheel Drive with locking center differential	○	○	○	○
Electric Parking Brake with Automatic Vehicle Hold	●	●	●	●
3,500-lb towing capacity (with trailer brakes) and trailer pre-wiring	●	●	●	●
5,000-lb towing capacity (with trailer brakes)	–	–	○	○

### Exterior Features

Exterior Features	SE	SEL	SEL Prem	Limited
Automatic headlights with High Beam Assist	●	●	●	●
LED Daytime Running Lights and LED taillights	●	●	●	●
LED headlights	–	–	●	●
Dark chrome accent front grille and tailgate handle trim	–	–	–	●
Heated side mirrors with LED turn signal indicators	–	●	●	●
Bodycolor door handles	–	–	●	●
Roof side rails and power tilt-and-slide sunroof	–	●	●	●
Rear sliding glass window with defroster	–	●	●	●
Sheet molded composite bed	●	●	●	●
Integrated multi-level rear bumper steps	●	●	●	●
Heavy duty cargo D-rings	●	●	●	●
Sidewall and underbed storage compartments	●	●	●	●
115V AC power inverter in bed	–	●	●	●
Roof-mounted LED cargo light	●	●	●	●
Side-mounted LED bed lights	–	●	●	●
Rain-sensing windshield wipers	–	–	–	●

### Interior Features

Interior Features	SE	SEL	SEL Prem	Limited
Proximity Key entry with push button start and key fob remote engine start	–	●	●	●
4.2" LCD instrument cluster display	●	●	–	–
10.25" digital instrument cluster display	–	●	●	●

### Interior Features

Interior Features	SE	SEL	SEL Prem	Limited
Leather-wrapped steering wheel and shift knob	–	–	●	●
Heated steering wheel and ambient interior lighting	–	–	–	●
8-way power driver seat with 2-way power lumbar support	–	●	●	●
Heated front seats	–	●	●	●
Leather-trimmed seats and ventilated front seats	–	–	–	●
Dual automatic temperature control and auto-defogging windshield	–	–	●	●
Cruise control   Smart Cruise Control with Stop & Go	● –	● –	● –	– ●
Floor console-mounted rear vents	–	–	–	●
Auto-dimming rearview mirror with HomeLink®	–	–	●	●
60/40 split tip-up lower seat cushions and under-seat storage tray	●	●	●	●
Rearview camera with dynamic parking guidelines	●	●	●	●

### Advanced Safety

Advanced Safety	SE	SEL	SEL Prem	Limited
Forward Collision-Avoidance Assist with Pedestrian Detection	●	●	●	●
Lane Keeping Assist and Lane Following Assist	●	●	●	●
Rear Occupant Alert	●	●	●	●
Driver Attention Warning	●	●	●	●
Blind-Spot Collision-Avoidance Assist and Safe Exit Warning	–	●	●	●
Rear Cross-Traffic Collision-Avoidance Assist	–	●	●	●
Highway Driving Assist and Intelligent Speed Limit Assist	–	–	–	●
Blind-Spot View Monitor and Surround View Monitor	–	–	–	●

### Audio & Connected Car Technology

Audio & Connected Car Technology	SE	SEL	SEL Prem	Limited
8" color touchscreen Display Audio system with 6 speakers	●	●	●	–
Bose® 8-speaker premium audio system	–	–	–	●
10.25" high-resolution touchscreen navigation system	–	–	–	●
Android Auto™ and Apple CarPlay® (wireless   wired)	● –	● –	● –	– ●
SiriusXM Satellite Radio	–	●	●	●
Wireless device charging	–	●	●	●
Hyundai Digital Key	–	–	●	●
Dynamic Voice Recognition	–	–	–	●
Bluelink® Connected Car System (3 years complimentary)	–	●	●	●
Dual USB charge ports (front   rear)	● –	● –	● –	● ●

● Standard ○ Optional ● SEL Activity Package – Not Available SEL Prem = SEL Premium Trim



Hyundai Hope On Wheels®

Helping Kids Fight Cancer Since 1998



## Hope makes every Hyundai better.

Each time we sell a Hyundai, a portion goes to Hyundai Hope On Wheels® to help find a cure for childhood cancer. Over the last 23 years, Hyundai Hope On Wheels has donated more than \$185 million. Hope is our greatest feature. And it comes standard on every Hyundai. For more information, please visit [HyundaiHopeOnWheels.org](http://HyundaiHopeOnWheels.org).



## America's Best Warranty

POWERTRAIN  
LIMITED WARRANTY

10 YEARS 100,000 MILES

NEW VEHICLE  
LIMITED WARRANTY

5 YEARS 60,000 MILES

ANTI-PERFORATION  
WARRANTY

7 YEARS UNLIMITED MILES

24/7 ROADSIDE  
ASSISTANCE

5 YEARS UNLIMITED MILES



**Hyundai**  
Complimentary  
Maintenance

Complimentary maintenance includes Hyundai-approved oil and oil filter change (except for electric vehicles and fuel cell electric vehicles) plus tire rotation at normal factory-scheduled maintenance intervals for 3 years or 36,000 miles, whichever comes first. More frequent maintenance due to severe driving or conditions is excluded. Offer valid only for new 2020-2022 Hyundai models purchased or leased on or after February 1, 2020. See your Hyundai dealer for further details and limitations.



**Owner**  
Assurance

Our commitment to Hyundai owners does not end with the transfer of keys. Wherever the road takes you, we've got your back with Owner Assurance, an umbrella of services and benefits that includes America's Best Warranty, 24/7 Roadside Assistance, innovative safety and car care features...and more.

See dealer for LIMITED WARRANTY details. Fuel economy estimated by EPA for comparison only. Mileage may vary. While the information contained in this brochure was correct at the time of printing, specifications and equipment can change. Feature comparisons based on competitor information available at the time of printing. No warranty or guarantee is being extended in this brochure, and Hyundai reserves the right to change product specifications and equipment at any time without incurring obligations. Some vehicles are shown with optional equipment. Specifications apply to U.S. vehicles only. Please contact your Hyundai dealer for current vehicle specifications. As part of Hyundai's commitment to a responsible environment, this brochure was printed using paper certified by the Forest Stewardship Council®. FSC® certification helps ensure that the highest social and environmental standards are met in the making of the paper we use, contributing to conservation, responsible management and community-level benefits for people near the forests.



©2021 HYUNDAI NP020X2022