

2022

TUCSON Plug-in Hybrid





Take a new kind of power trip. In TUCSON Plug-in Hybrid.

TUCSON Plug-in Hybrid Limited in Amazon Gray

How do you take the best-selling SUV in the Hyundai lineup, and make it even better? By creating a new generation of our popular Tucson for 2022 – then going one step further: Introducing the all-new Tucson Plug-in Hybrid.

It combines the zero emissions of electric battery power with the range security of a compact gasoline engine. Tucson Plug-in Hybrid also has the sportiness of a bold stance, and a kinetic energy reflected in the jewel-like surfaces that shape its stunning form. The most exciting design element? A dazzling cluster of Daytime Running Lights projected

from within its new grille. Revealed only when illuminated, they are certain to become the Tucson's unmistakable signature.

Step inside, and it's clear the intelligent solutions aren't confined to its plug-in hybrid power. Because the 2022 Tucson is longer, wider and taller than its previous generation, the new Tucson Plug-in Hybrid boasts a spacious, well-designed interior that's filled with more of what you want. More room for people and cargo. More connectivity and convenience technologies. Now that's how the best gets even better.

¹Charge time based on 240V Level 2 charger. MPGe is the EPA-equivalent measure of gasoline fuel efficiency for electric mode operation. Use for comparison purposes only. Mileage may vary depending on driving conditions, driving habits, the vehicle's condition, the age/condition of the lithium-ion polymer battery, and other factors. ²EPA estimates for comparison only. Mileage may vary. Your actual mileage will vary with options, driving conditions, driving habits and the vehicle's condition. ³Towing capacity with trailer brakes. ⁴Safety features vary by model and trim level. For details, refer to the Features chart in the back of this brochure or visit HyundaiUSA.com. ⁵Highway Driving Assist (HDA) is for highway use only and can help maintain a safe distance from the vehicle ahead while keeping your vehicle centered in its lane when lane markings are clearly visible on the road. HDA should not be used in poor weather, heavy or varying traffic, or on winding or slippery roads. HDA will not work under all circumstances and will not prevent loss of control. Driver remains responsible to slow or stop the vehicle to avoid a collision. See Owner's Manual for details and limitations.

It's a socket rocket.

With Tucson Plug-in Hybrid, two sources of power work seamlessly to ensure you get zero-emission electric operation around town, plus a long driving range for weekend getaways.

There's a robust 66.9 kW electric motor powered by Tucson Plug-in Hybrid's 13.8 kWh battery pack. A 7.2 kW onboard charger lets you recharge the battery in as little as two hours for an all-electric range of up to 33 miles with a 80 MPGe efficiency rating.¹ For longer range, a turbocharged 1.6L engine and electric motor work in concert to generate up to 261 net horsepower. Together, gas and electric power deliver a combined 35 MPG.²

In all aspects, Tucson Plug-in Hybrid delivers versatile crossover performance active lifestyles demand. It comes standard with HTRAC All Wheel Drive, and the system includes selectable driving modes optimized for snowy or slippery roads. There's also e-Handling technology, which takes advantage of the electric motor's robust torque to provide improved traction, stability and confidence while cornering. Have a camper or recreational toys you want to trailer? No problem. Tucson Plug-in Hybrid has a tow rating of 2,000 pounds.³

A remarkable arsenal of standard SmartSense safety technologies helps protect you and your passengers from all angles.⁴ There's even an available feature called Highway Driving Assist⁵ that helps keep you in your lane at a safe cruising distance from the traffic ahead while automatically adjusting for changing speed limits.



Blind-Spot View Monitor



Plug-in Hybrid charging port



HTRAC All Wheel Drive

Standard Hyundai SmartSense Technologies





Wherever it takes you, you're living on easy street.

It starts with how Tucson Plug-in Hybrid Limited effortlessly eases itself into – and out of – tight parking spaces. Just press a button on your Smart Key, and you can help your Tucson negotiate tricky parking spaces without being inside the vehicle.¹

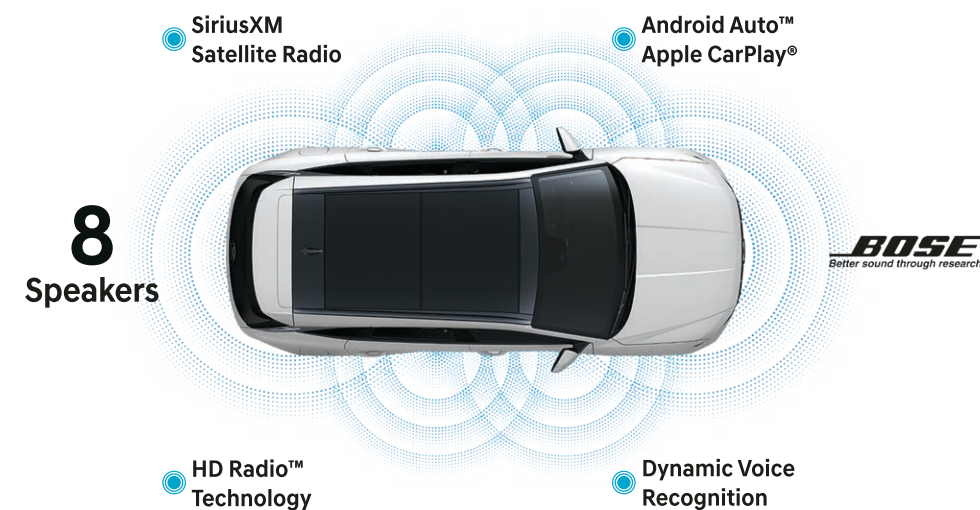
The door handles can sense your Smart Key fob, or the Hyundai Digital Key on your compatible smartphone,² and let you enter with a mere touch. You can also unlock your Tucson Plug-in Hybrid remotely using the MyHyundai app.³ However you choose to open the driver's door, the sense of closeness continues once you're seated inside.

As the driver, you're kept informed by Tucson Plug-in Hybrid Limited's 10.25" digital instrument cluster display. Touchscreen controls for the Bose® audio system, capacitive touch climate controls and a new multi-air mode that diffuses airflow throughout the interior combine to create the perfect driving environment.

More than an interior filled with features like ventilated front seats or heated 2nd-row seats, this environment eases you into a sense of openness and serenity. It's not imaginary: Tucson Plug-in Hybrid offers 2nd-row passengers generous headroom and legroom. Versatile remote-release folding 2nd-row seats and a hands-free smart liftgate provide access to a spacious cargo area.



Hyundai Digital Key



Wide 10.25" touchscreen navigation display



Remote Smart Parking Assist



Panoramic sunroof



Hands-free smart liftgate with auto open

¹Remote Smart Parking Assist (RSPA) can remotely help park your vehicle. However, RSPA may not function correctly if one or more of the parking sensors is damaged, dirty or covered, or if weather conditions (heavy rain, snow or fog) interfere with sensor operation. Always inspect the parking area with your own eyes. See Owner's Manual for details and limitations. ²The available Hyundai Near Field Communication Digital Key requires a compatible Android smartphone and appropriately equipped 2022 Hyundai Tucson Plug-in Hybrid. Not all Android devices are compatible. Tucson vehicle must be equipped with a smart key with push button start, wireless device charging and Audio Video Navigation System 5.0 (or newer) or Display Audio 2.0. Lock and unlock functionality work on the front doors only. See your Owner's Manual for details and limitations. ³Requires active Bluelink subscription with Remote package.

With Hyundai Bluelink, you're totally plugged in.

Tucson Plug-in Hybrid features our award-winning Bluelink® Connected Car System, complimentary for your first three years.¹ The MyHyundai app turns your smartphone into a remote control that can start your Tucson's engine and climate controls before you walk out the door.²

Starting your Tucson remotely or with the available Hyundai Digital Key tunes radio presets and driver seat settings ahead of time using your Bluelink personal profile. Want to remotely check to see if you've left your doors unlocked or the lights on? Simply consult your MyHyundai app.²

Tucson's available 10.25" touchscreen navigation system features a split screen that lets you view both maps and music with a single glance. Junction view lane guidance and subscription-free traffic flow and incident data help alleviate some of the stresses of commutes.

And how easy is this? With available Dynamic Voice Recognition, you can activate climate controls, select SiriusXM channels and more using simple voice commands.³ Tucson Plug-in Hybrid also features wireless Android Auto™/Apple CarPlay®⁴ and is available with wireless device charging.⁵

Bluelink



Automatic Emergency Assistance

Bluelink Connected Care offers 24/7 SOS Emergency Assistance as well as Automatic Collision Notification that calls for help if you're in an accident where airbags deploy.⁶



On-Demand Diagnostics

Run vehicle diagnostics from your touchscreen, report issues at the press of a button and receive Monthly Vehicle Health Reports or your maintenance reminders by email.



Remote Vehicle Status

Wondering how much fuel is in your tank? If your vehicle's liftgate is open or the doors are unlocked? Your MyHyundai app knows the answers to these questions and more.



Vehicle Charging Dashboard

Find charging stations, control your Tucson Plug-in Hybrid's charging remotely and schedule charging times at cheaper off-peak hours.



Driver Profile Management

Save radio presets, driver seat settings and navigation searches to your Bluelink account, and you can remotely update them and push them to your Tucson Plug-in Hybrid.

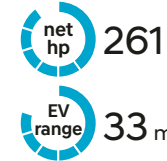


Remote Vehicle Controls

Your smartphone, wearable device or smart speaker can be used to remotely start your vehicle's engine, set the cabin temperature, unlock the doors and more.

TUCSON Plug-in Hybrid SEL

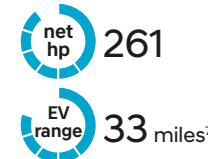
Smartstream 1.6L Turbo GDI 4-Cylinder Hybrid Engine



Popular Features	
HTRAC All Wheel Drive	
Blind-Spot Collision-Avoidance Assist	
Rear Cross-Traffic Collision-Avoidance Assist	
Bluelink® Connected Car System (3 years complimentary)	
Heated front seats and heated side mirrors	
Dual front and 2nd-row USB charge ports	

TUCSON Plug-in Hybrid Limited

Smartstream 1.6L Turbo GDI 4-Cylinder Hybrid Engine



Popular Features	
10.25" high-resolution touchscreen navigation system	
Blind-Spot View Monitor and Surround View Monitor	
Ventilated front seats	
Remote Smart Parking Assist	
Heated 2nd-row seats and steering wheel	
Parking Distance Warning – Forward & Reverse	

TUCSON Plug-in Hybrid EPA Estimates (Combined)⁸

35 MPG / 80 MPGe | SEL / Limited AWD 6-Speed A/T

TUCSON Plug-in Hybrid

Power & Handling	SEL	Ltd
261 net hp, Smartstream 1.6L Turbo GDI 4-cylinder hybrid engine with 66.9 kW high-power density motor	●	●
6-speed automatic transmission with paddle shifters	●	●
Shift-by-Wire push-button gear selection	●	●
Drive Mode Select and Downhill Brake Control	●	●
HTRAC All Wheel Drive	●	●
Electronic Parking Brake with Automatic Vehicle Hold	●	●
2,000-lb towing capacity and trailer pre-wiring ⁹	●	●

Exterior Features	SEL	Ltd
Automatic headlights with High Beam Assist	●	●
LED Daytime Running Lights	●	●
LED headlights	●	●
LED taillights	●	●
Dark silver front and rear bumper molding	–	●
Silver painted front and rear skid plates	–	●
Dark chrome accent front grille and Hyundai logo	–	●
Heated side mirrors with LED turn signal indicators	●	●
Acoustic-laminated windshield	●	●
Roof side rails	●	●
Panoramic sunroof	–	●
Hands-free smart liftgate with auto open and adjustable height setting	–	●
Rear privacy glass	●	●

Interior Features	SEL	Ltd
Proximity Key entry with push button start	●	●
10.25" digital instrument cluster display	–	●
Tilt-and-telescopic steering wheel with audio/phone/cruise controls	●	●
8-way power driver seat with 2-way power lumbar support	●	●
8-way power front passenger seat	–	●
Leather-wrapped steering wheel and ambient LED interior lighting	–	●
Leather-trimmed seats and ventilated front seats	–	●
Driver memory seat	–	●
Reclining 60/40 split-folding 2nd-row seats with center armrest	●	●

Interior Features	SEL	Ltd
Heated front seats	●	●
Heated 2nd-row seats and steering wheel	–	●
Dual automatic temperature control	●	●
Auto-defogging windshield	●	●
Smart Cruise Control with Stop & Go	●	●
Auto-dimming rearview mirror with HomeLink®	–	●
Remote Smart Parking Assist	–	●
Rear View Monitor with Parking Guidance	●	●

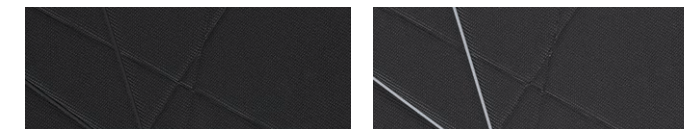
Advanced Safety	SEL	Ltd
Forward Collision-Avoidance Assist with Pedestrian/Cyclist Detection and Junction Turning Detection	●	●
Lane Keeping Assist and Lane Following Assist	●	●
Driver Attention Warning	●	●
Rear Occupant Alert	●	●
Blind-Spot Collision-Avoidance Assist	●	●
Rear Cross-Traffic Collision-Avoidance Assist	●	●
Safe Exit Warning	●	●
Parking Distance Warning – Forward & Reverse	–	●
Parking Collision-Avoidance Assist – Reverse	–	●
Highway Driving Assist	–	●
Navigation-based Smart Cruise Control with Curve Control	–	●
Blind-Spot View Monitor and Surround View Monitor	–	●

Audio & Connected Car Technology	SEL	Ltd
8" high-resolution touchscreen Display Audio system	●	–
10.25" high-resolution touchscreen navigation system	–	●
Bose® 8-speaker premium audio system	–	●
SiriusXM Satellite Radio and HD Radio™	●	●
Android Auto™ and Apple CarPlay® (wireless wired)	● –	– ●
Wireless device charging	–	●
Hyundai Digital Key	–	●
Bluelink® Connected Car System (3 years complimentary)	●	●
Dual front and 2nd-row USB charge ports	●	●

● Standard – Not Available Ltd=Limited Trim

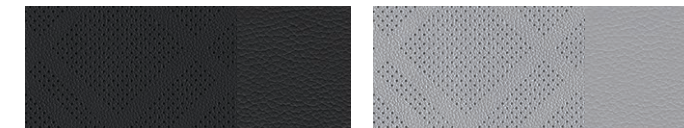
¹The 2022 Hyundai Tucson Plug-in Hybrid includes 3 years of the Bluelink Connected Care, Remote and Guidance (factory-equipped navigation required) packages. All trials require an active Bluelink subscription agreement subject to the Connected Services Terms and Conditions. Three-year term starts from the new vehicle date-of-first-use, is available for new vehicle purchases and leases, and is transferable to subsequent owners subject to the Terms and Conditions. Only use Bluelink and corresponding devices when safe to do so. Cellular and GPS coverage is required. Features, specifications and fees are subject to change. For details and limitations, visit HyundaiUSA.com or your authorized Hyundai dealer. ²Requires active Bluelink subscription with Remote package. ³Dynamic Voice Recognition varies by unit. Speak in a normal voice and minimize background noise for best results. See Owner's Manual for details and limitations. ⁴Limited models require a wired smartphone connection. Apple CarPlay™ is a registered trademark of Apple Inc. Android Auto™ is compatible with Android™ phones running Android 5.0 or higher. Android Auto may not be available on all devices and is not available in all countries or regions. Additional apps may be required. Android and Android Auto are trademarks of Google LLC. ⁵Qi wireless charging function is based on smartphone compatibility and/or specific accessory cases. ⁶Bluelink agents will contact existing emergency service responders. ⁷All-Electric Range based on a fully charged battery pack and 80 combined MPGe. ⁸EPA estimates for comparison only. Mileage may vary. Your actual mileage will vary with options, driving conditions, driving habits and the vehicle's condition. MPGe is the EPA-equivalent measure of gasoline fuel efficiency for electric mode operation. Use for comparison purposes only. Mileage may vary depending on driving conditions, driving habits, the vehicle's condition, the age/condition of the lithium-ion polymer battery, and other factors. ⁹Towing capacity with trailer brakes.

Interior Colors



SEL Black Cloth

SEL Gray Cloth



Limited Black Leather

Limited Gray Leather

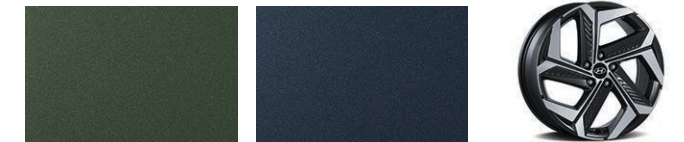
Exterior Colors / Wheels



White Pearl

Shimmering Silver

Ash Black



Amazon Gray

Deep Sea

19" Alloy Wheel

Exterior Dimensions	TUCSON Plug-in Hybrid
Wheelbase	108.5 in
Overall Length	182.3 in
Overall Width	73.4 in
Overall Height with roof rails	65.6 in

Interior Dimensions	TUCSON Plug-in Hybrid
Headroom – front / 2nd row (w/o sunroof)	40.1 / 39.5 in
Headroom – front / 2nd row (panoramic sunroof)	38.1 / 38.7 in
Legroom – front / 2nd row	41.1 / 39.5 in
Shoulder Room – front / 2nd row	57.6 / 56.0 in
Passenger Volume	105.9 cu ft
Cargo Capacity – 2nd row seats up / down	31.9 / 66.3 cu ft
Total Interior Volume	137.8 cu ft



Hyundai Hope On Wheels®

Helping Kids Fight Cancer Since 1998



Hope makes every Hyundai better.

Each time we sell a Hyundai, a portion goes to Hyundai Hope On Wheels® to help find a cure for childhood cancer. Over the last 23 years, Hyundai Hope On Wheels has donated more than \$185 million. Hope is our greatest feature. And it comes standard on every Hyundai. For more information, please visit HyundaiHopeOnWheels.org.



America's Best Warranty

POWERTRAIN LIMITED WARRANTY

10 YEARS
100,000 MILES

NEW VEHICLE LIMITED WARRANTY

5 YEARS
60,000 MILES

ANTI-PERFORATION WARRANTY

7 YEARS
UNLIMITED MILES

24/7 ROADSIDE ASSISTANCE

5 YEARS
UNLIMITED MILES

HYBRID/ELECTRIC SYSTEM COMPONENTS

10 YEARS
100,000 MILES



Hyundai Complimentary Maintenance

Complimentary maintenance includes Hyundai-approved oil and oil filter change (except for electric vehicles and fuel cell electric vehicles) plus tire rotation at normal factory-scheduled maintenance intervals for 3 years or 36,000 miles, whichever comes first. More frequent maintenance due to severe driving or conditions is excluded. Offer valid only for new 2020-2022 Hyundai models purchased or leased on or after February 1, 2020. See your Hyundai dealer for further details and limitations.



Owner Assurance

Our commitment to Hyundai owners does not end with the transfer of keys. Wherever the road takes you, we've got your back with Owner Assurance, an umbrella of services and benefits that includes America's Best Warranty, 24/7 Roadside Assistance, innovative safety and car care features...and more.

America's Best Warranty covers specific hybrid/electric vehicle-related components including high voltage battery, battery management system and traction motor. See Owner's Handbook & Warranty Information Booklet for details. See dealer for LIMITED WARRANTY details. Fuel economy estimated by EPA for comparison only. Mileage may vary. While the information contained in this brochure was correct at the time of printing, specifications and equipment can change. Feature comparisons based on competitor information available at the time of printing. No warranty or guarantee is being extended in this brochure, and Hyundai reserves the right to change product specifications and equipment at any time without incurring obligations. Some vehicles are shown with optional equipment. Specifications apply to U.S. vehicles only. Please contact your Hyundai dealer for current vehicle specifications. As part of Hyundai's commitment to a responsible environment, this brochure was printed using paper certified by the Forest Stewardship Council®. FSC® certification helps ensure that the highest social and environmental standards are met in the making of the paper we use, contributing to conservation, responsible management and community-level benefits for people near the forests.

