

GMC

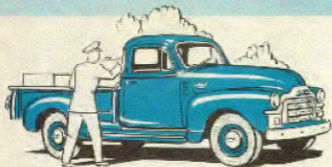
100-24

GASOLINE POWERED TRUCKS

DELIVERY ENTR

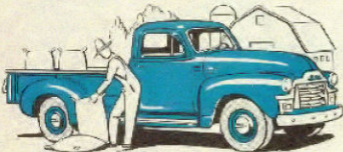


4 GMC Built Bodies *FOR YOUR HAULING NEEDS*



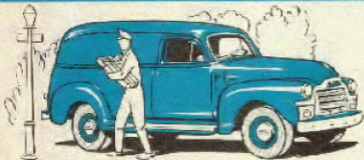
GMC's New 101-24 Pickup

GMC's new 101-24 1/2-ton Pickup holds an extra 8.1 cubic feet of cargo—and has flat floor-boards to accommodate wide loads. Its hardwood body floor—protected by recessed skid strips—is now 2" closer to the pavement to ease loading and unloading operations. The one-piece, extra-heavy tail gate is completely flush with the top of the side panels—and it's sand-tight. There's a choice of 12 smart colors.



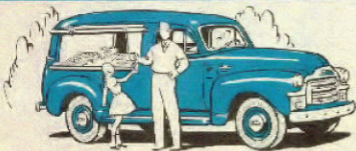
GMC's New 102-24 Pickup

GMC's new 102-24 1/2-ton Pickup holds an extra 10.36 cubic feet of cargo—and has flat floor-boards to accommodate wide loads. Its hardwood body floor—protected by recessed skid strips—is now 2" closer to the pavement to ease loading and unloading operations. The one-piece, extra-heavy tail gate is completely flush with the top of the side panels—and it's sand-tight. There's a choice of 12 smart colors.



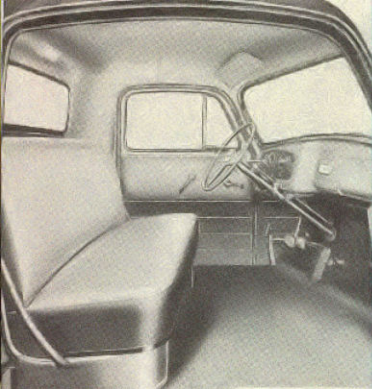
GMC's New 100-24 Panel

Smart, new styling inside and out—backed by new, extra-stemian trim ribs to roof—make Model 100-24 the handiest and ruggedest GMC 1/2-ton Panel ever built. Bonus value features include insulated roof and side panels, weather-sealed doors and remote-control rear door lock. Your choice of 12 eye-catching colors. A beautiful de luxe model is also available.



GMC's New 100-24 Canopy Express

Here's a handsome new 1/2-ton Canopy Express that will focus all eyes on any business requiring the maximum display of merchandise. Its many extra-value features include a steel partition—equipped with a non-attarable window—between driver and cargo area, extra-sturdy, one-piece tail gate and wide-entrance doors with concealed hinges. Waterproof curtains provide effective all-weather protection for the cargo. Available in 12 attractive colors.



2 GMC Built Cabs

*FOR EVEN
GREATER
COMFORT AND
VISIBILITY*

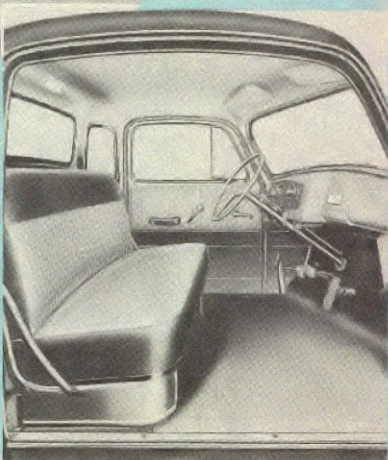
STANDARD "SIX-FOOTER" CAB

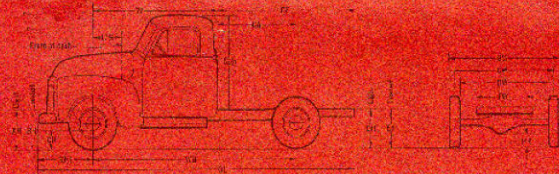
There's a clear, unobstructed view through the new, one-piece curved windshield that's been added to the extra comfort and convenience of GMC's rugged, all-steel "six-footer" cab. Ventilation is masterfully controlled through Vertipane side windows. (All glass is amber-tintable.)

Inside-the-cab improvements include a handsome new 2-tone color scheme, adjustable luxury-type seat with double-contruction springs and attractive new instruments grouped for easier checking by the driver. (The new open steering wheel design permits easy in-car visibility of the dial.)

DE LUXE "SIX-FOOTER" CAB

GMC's new de luxe cabs include such extra-convenience features as drivers' overhead cab corner windows, stainless steel reveal molding on door windows and additional sun visor on passenger's side.





Showing in the dimensions only and does not show details of design for any particular model.

MODEL	LENGTH (All Size Class)				TURNING RADIUS (ft.)		AW 170 72% 42%	Tread From Tire Crest Centerline—Tire & Spring Clip Width Over Front Fenders Front Spring Centers Rear Spring Centers									
	WB	FA	CF	CL	BI	DI											
18-24	116	39	75 1/2	85 1/2	20 1/2	23 1/2											
192-24	122 1/4	48 1/4	87 3/4	108 1/2	22	22											
Size	TIRES		WHIFFS	WIDTH (All Wheelbases)							HEIGHT AT AXLE (All Wheelbases)						
	in. PR	Rear		lb Cap.	in. ER	in. OF	AW	BW	FW	DW	FW	LW	AH	BH	CH	DH	EH
6.00/16	4	Single	910	4 1/2	3/4	50 1/2	67 1/2	61	54 1/2	46	4 1/2	21	21	8 1/4	23 1/2	20 1/2	8
6.00/16	6	Single	1065	4 1/2	3/4	56 1/2	67 1/2	61	54 1/2	46	4 1/2	21	21	8 1/4	23 1/2	20 1/2	8
6.50/16	6	Single	1215	4 1/2	3/4	62 1/2	67 1/2	61	54 1/2	46	4	21 1/2	21 1/2	8 1/4	24 1/2	21 1/2	8 1/2
15"	6	Single	1500	5.00	0	57 1/2	70	62 1/2	54 1/2	46	4	21 1/2	21 1/2	8 1/4	24 1/2	21 1/2	8 1/2
15"	8	Single	1700	5.50	0	57 1/2	70	62 1/2	54 1/2	46	4	21 1/2	21 1/2	8 1/4	24 1/2	21 1/2	8 1/2

(a) Tire rating. (b) Tire and Whiffles rated together, lbs. per tire. (c) Light bulbs shown are for chassis, plus 100-watt for each body and appliance.

STANDARD CHASSIS SPECIFICATIONS

GVW RATING—4100 Lb.

234 Type 1454.

FRONT 6.00/16 4-way steering, front, single rear and spare.

WHEELS Stamped steel disc. Malleable iron, front hubs, forged rear axle drive flange.

ENGINE GMC 240 engine, 3 1/2 in. bore, 3 1/2 in. stroke. Displacement, 246.5 cu. in. Bore, 3.5 in. Stroke, 2100 rpm, Max. Net BHP, 113 @ 2400 rpm, Max. Gross Torque 850-lb. ft. @ 1200-2400 rpm, Max. Net Torque 815-lb. ft. @ 1200-1400 rpm.

CLUTCH 10 1/2 in., 5" sq. in. frayed steel. Single shaft disc type.

TRANSMISSION GMC 5A-318, Three-speed synchromesh, steering column gear shift.

FRONT AXLE GMC 1-022. Rated capacity 2200 lb. Reinforced, forged-steel beam axle.

REAR AXLE GMC B-034. Hypoid single reduction, semi-floating. Rated capacity, 2200 lb. Bore, 3.00 in., Barga housing, Hotchkiss Drive with knurled tubes.

SERVICE BRAKES Hydraulic, two-drum type. Front 11 x 2; Rear 11 x 13. Steel-plate cast-iron drums.

PARKING BRAKE Mechanical application of rear brakes. Foot-pedal operated.

STEERING Rack-and-pinion type, ball and nut vector type, non-reversible. Adjustable. 1 1/2 in. wheel base, 74 in. I.

FRAME 11 1/2 in. wheelbase 2 1/2 x 2 1/4 x 3/4 section (Model 245, 125 1/2 in. wheelbase) 2 1/2 x 2 1/4 x 3/4 section (Model 270).

FRONT SPRINGS Semi-elliptic, alloy spring steel, 28 x 1 1/2, 8-leaf.

REAR SPRINGS Semi-elliptic, alloy spring steel, 34 1/2 x 1 1/2, 8-leaf.

SHOCK ABSORBERS Billet double-acting, cast steel type.

GENERATOR 6-volt, 40-ampere, ventilated. Voltage and current regulated.

BATTERY 15-plate, 6-volt, 105-amp. hi capacity.

COOLING SYSTEM Capacity, 17 gal. Cast-iron type; Radiator 2-in. frontal area, 407 sq. in. Spring-mounted protective frame. Lubrication 100W, 4-Stroke, 7 1/2 in. dia.

PROPELLER SHAFT 1 1/2 in. shaft-hub. Cast-iron shaft and hub in torque tube, with exclusive universal joint at front end. 125% to 150% overload limit. Shaft secured by tubular housing, tubular end shaft secured in torque tube, enclosed universal joint at forward end of each shaft, center joint supported by dual ball bearings and attached to frame cross member.

FLY WHEEL 7 1/2 gal. back of oil pan. Cover of oil bodies, 1/2 gal. oil tank side oil.

MISCELLANEOUS STANDARD EQUIPMENT

Front bumper, spring type. Burmah Interim panel, plastic, spaced-outlet. 300 gal. for oil, water, water temperature. 28-watt type air cleaner. Central fuel shut-off, hand bottle, oil burner choke, key-locking ignition switch. Hydraulic oil tank bolt. Spare wheel and tire. Tire cover. Jack and wheel nut wrench.

MAJOR OPTIONS (at extra cost)

Air cleaner, Oil bath, 1-pc. or 1-pc. Bumper, Deluxe panel, chrome, convex cap on tire holder. Cowl Deluxe, includes Deluxe chassis equipment, screen windows, etc. Converter, Economy. Cowl, Reinforced. Filter, oil AC, type 1-1. Governor, 10-mesh, low pull-in, 55-mesh. Glass, E-Z lift, tinted. Governor, Velocity type. Radio, Buick type. Transmission, Four-speed Synchromesh, Hydro-matic. Spare fuel oil tank for fire protection. Not available on chassis with coil.

GMC Truck & Coach Division reserves the right to make changes in any item without notice in price, color, materials, equipment, specifications and models, and to use it in any manner.

Data shown above is basic information for the prospective buyer. Dealer will provide complete literature or optional, extra features, etc., on request.

GMC TRUCK & COACH DIVISION, GENERAL MOTORS CORPORATION PONTIAC, MICHIGAN