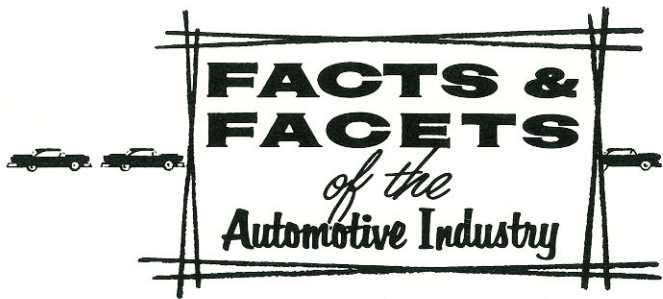


Evolution of the MERCURY

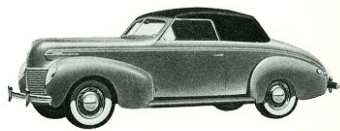


Ford Motor Company

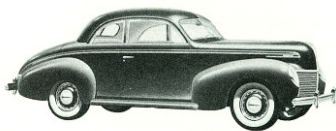
THE AMERICAN ROAD
DEARBORN, MICHIGAN



Evolution of the MERCURY



1939 — SPORT CONVERTIBLE



1939 — SEDAN-COUPÉ



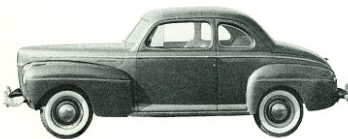
1939 — TOWN-SEDAN



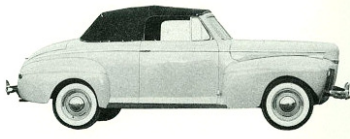
1940 — CONVERTIBLE SEDAN



1940 — TOWN-SEDAN



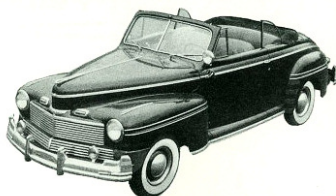
1941 — SEDAN-COUPÉ



1941 — CLUB CONVERTIBLE



1941 — SEDAN



1942 — CLUB CONVERTIBLE



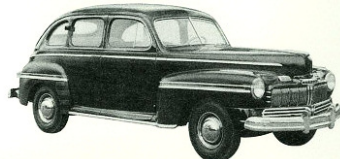
1942 — TOWN-SEDAN



1946 — SEDAN-COUPÉ



1946 — SPORTSMAN'S CONVERTIBLE COUPÉ



1946 — TOWN-SEDAN



1947-48 — CLUB CONVERTIBLE



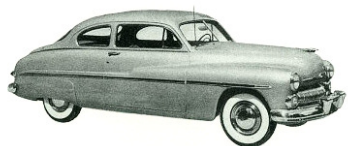
1947-48 — TOWN-SEDAN



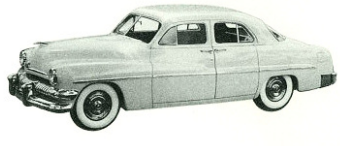
1949 — STATION WAGON



1949 — 6-PASSENGER CONVERTIBLE



1950 — 6-PASSENGER COUPÉ



1951 — 6-PASSENGER SPORT SEDAN



1952 — CUSTOM SPORT COUPÉ



1952 — MONTEREY SPECIAL CUSTOM CONVERTIBLE



1952 — CUSTOM 4-DOOR SEDAN



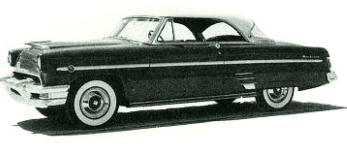
1953 — MONTEREY SPECIAL CUSTOM CONVERTIBLE



1953 — CUSTOM 4-DOOR SEDAN



1954 — MONTEREY SPECIAL CUSTOM CONVERTIBLE



1954 — MONTEREY SPECIAL CUSTOM COUPÉ



1954 — MONTEREY SPECIAL CUSTOM 4-DOOR SEDAN



1955 — CUSTOM STATION WAGON



1955 — MONTCLAIR COUPÉ



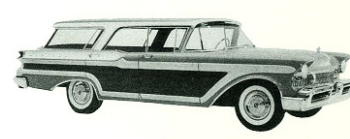
1956 — MONTCLAIR PHAETON



1956 — MEDALIST 2-DOOR SEDAN



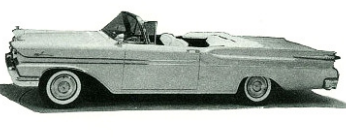
1956 — MONTEREY COUPÉ



1957 — COLONY PARK 4-DOOR STATION WAGON



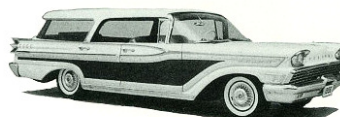
1957 — TURNPIKE CRUISER 4-DOOR



1958 — PARK LANE CONVERTIBLE



1958 — PARK LANE PHAETON SEDAN



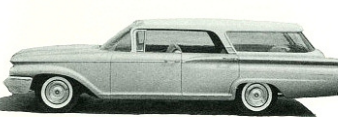
1959 — COLONY PARK 4-DOOR COUNTRY CRUISER



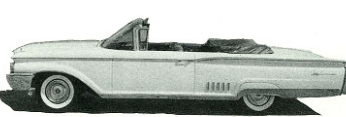
1959 — MONTEREY CONVERTIBLE



1960 — MONTCLAIR 4-DOOR HARDTOP CRUISER



1960 — COMMUTER COUNTRY CRUISER



1960 — PARK LANE CONVERTIBLE