

Pontiac Safari 75

Grand Safari / Catalina Safari / Laurentian Safari / Grand Le Mans Safari / Le Mans Safari

(* catalytic converter equipped)

Astre SJ Safari / Astre Safari





This literature is applicable only to 1975 General Motors vehicles equipped with a Catalytic Converter and to non Catalytic Converter equipped Astre Safari and Astre SJ Safari, pages 8 and 9.

Pontiac Grand Safari

Wrap the fingers of your left hand around the Custom Cushion steering wheel. With your right hand, feel the upholstery. Maybe it's the optional cloth in saddle tweed, or a standard richly colored all-vinyl Morrokide. Either way, enjoy a fold-down centre armrest. By then you'll realize you're in a quite luxurious station wagon. The 1975 Pontiac Grand Safari.

Look around and you'll see a wealth of amenities: Electric clock, door pull straps, two front seat illuminated ash-trays, and more. Behind you are 106.4 cubic feet of carpeted load space, not including a hidden compartment under the floor. Access to this space is made beautifully simple by the convenience of a disappearing tailgate with a window that slides into the roof.

Under the hood is a standard 400 CID

4-barrel V8, and there's also a Turbo Hydra-matic transmission, variable-ratio power steering and power front disc brakes.

The Grand Safari is also equipped with a package of features to make it more efficient and improve overall operating economy. There's a High Energy Ignition system. Its solid state circuitry replaces moving parts that could wear out or break. It supplies a lot more power to the spark plugs so you need tune-ups less frequently. Additionally there's an Early Fuel Evaporation system on the Grand Safari and other Pontiac models. Steel-belted radial ply tires are standard, and the suspension is specially tuned to let you take advantage of them. They offer a great deal of directional stability, last longer and are more resistant to damage than bias-belted tires.



Full foam seats for hours of comfortable highway cruising.

Outside you'll find things like deluxe wheel covers and rectangular headlamps. All in all, we think it won't take you long to discover why we call this one the Grand Safari.



Above: The power operated window slides into the roof and the door glides under the load floor.

Left: The Grand Safari station wagon with optional roof luggage carrier.



Rear view of the Grand Safari station wagon.

COVER: Foreground right: The Grand Safari station wagon. Left: The Astre Safari SJ station wagon. Background: The Le Mans Safari station wagon.

Some of the equipment shown or mentioned is optional at extra cost.



Pontiac Catalina and Laurentian Safari

The Catalina Safari is just the right blend of luxury and common sense. A handy vehicle and a luxurious automobile. This year, it makes even more sense than ever.

Because it's a Catalina you also get things like lamps for the glove box, and cigarette lighter. Two ashtrays in the instrument panel. Perforated vinyl headlining for more quiet. Even a hidden windshield antenna for your radio. Features like the new solid state High Energy Ignition and the Early Fuel Evaporation system make for a variety of benefits for the Catalina and Laurentian Safari driver. The new ignition has fewer moving parts that can wear out or break. It gets more power to the spark plugs. By doing all this, it allows lengthier intervals between tune-



A wide variety of luxurious interiors are available for both cars.

Left: The Laurentian Safari station wagon with optional roof luggage carrier.



Full foam comfortable seating

ups. The Early Fuel Evaporation system gives you sure starts on cold or wet mornings. These features work with the standard steel-belted radial ply tires to improve overall operating economy.

Standard on the Catalina Safari,

there's variable-ratio power steering, Turbo Hydra-matic automatic transmission and power front disc brakes.

The Laurentian Safari comes complete with features like variable-ratio power steering, power front disc brakes, Turbo Hydra-matic transmission and more. And it all comes on a big 127" wheelbase that takes everything in stride.

The Laurentian Safari has big L78 x 15 steel-belted radial ply tires and a radial-tuned leaf-spring rear suspension that is very stable and offers good handling characteristics even under heavy loads.

These are great vehicles for towing campers or boats. Ask your salesman about a factory installed trailer package.

Whether you're taking the kids to school or taking off for a trip around the country, the 1975 Pontiac Catalina and Laurentian are beautiful and sensible ways to go.



Catalina Safari with optional roof rack.

Some of the equipment shown or mentioned is optional at extra cost.



Pontiac LeMans Safari and Grand LeMans Safari

Under the load floor of this fine mid-size wagon, you'll find over 9 cubic feet of hidden storage space on the 2 seat model. That's more than you'll find in the trunk of some small cars. On top of the load floor there's 85-plus cubic feet more...just what you need for shopping, moving, or vacationing.

The LeMans Safari with standard 400 CID 2-barrel engine supplies all the power you need for heavy loads. And this year, it does it more efficiently than ever. A solid state High Energy Ignition system provides lengthier intervals between ignition tune-ups and quick, sure starts on cold wet mornings.

The LeMans Safari rides comfortably. Springs are computer-selected for your wagon equipped the way you order it. The suspension is carefully tuned.

Front and rear, you'll find air/hydraulic



Full foam comfortable seating in the LeMans Safari.

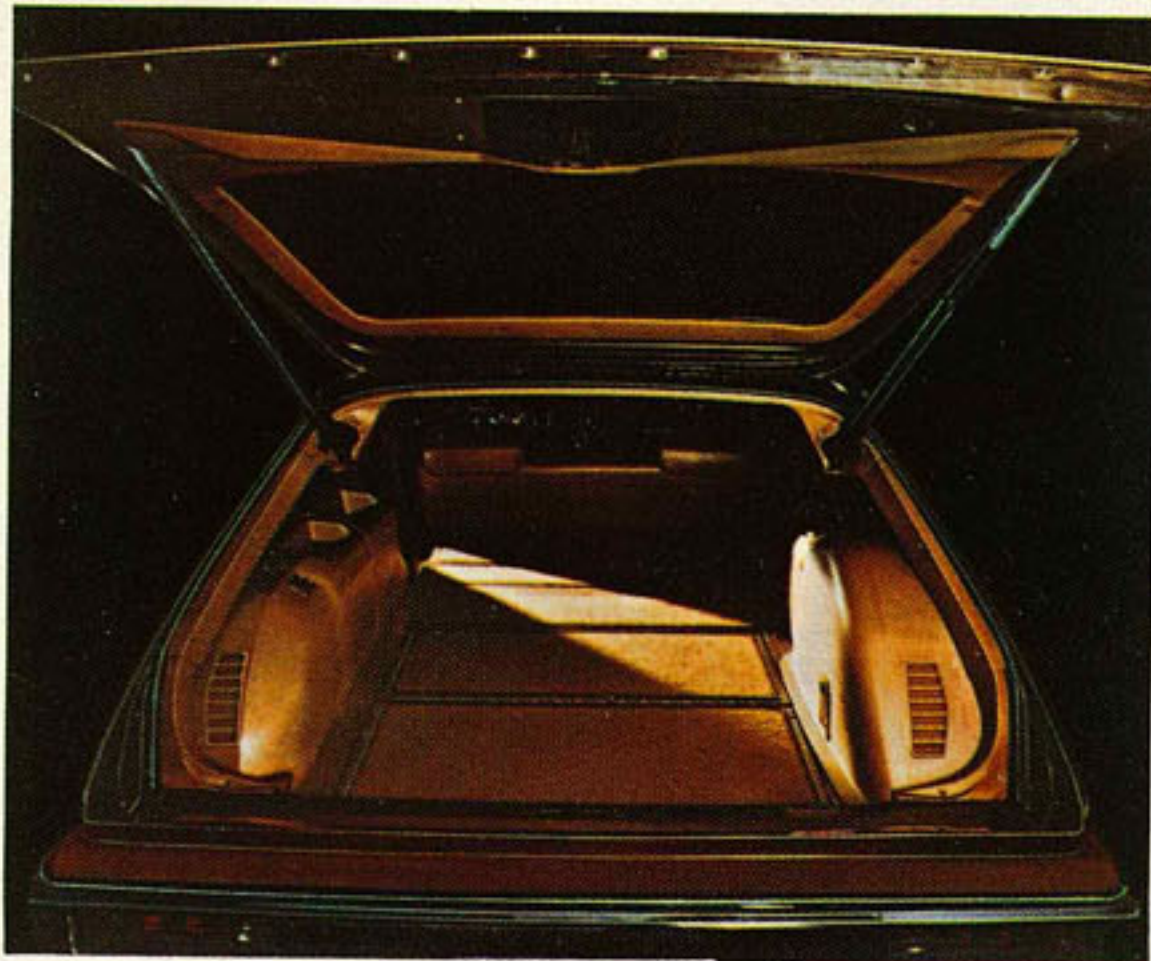
bumper systems that absorb the shock of minor impacts. Brakes are fade and water resistant power discs in front. In back there are large power drum brakes.

For an extra touch of flair and comfort

look into the Grand LeMans Safari. You can order it with the warm look of simulated woodgrain paneling outside. The steering wheel is cushioned and there's extra insulation to isolate you from road and engine noise.

With either the LeMans or Grand LeMans Safaris, you can order a rear-facing third seat model. When you do this, you also get a standard swing-out rear quarter vent window and an electric liftgate release with a control in the lockable glove box.

You can personalize your LeMans or Grand LeMans Safaris from a long list of options. Air conditioning keeps you cool and helps keep car air free of humidity, dust and pollen. There are AM, AM/FM and AM/FM Stereo push-button radios available, along with roof luggage carriers, and much more.



Seats fold down to offer 85 cubic feet of load space.

Left: The Grand LeMans Safari with optional roof luggage carrier.



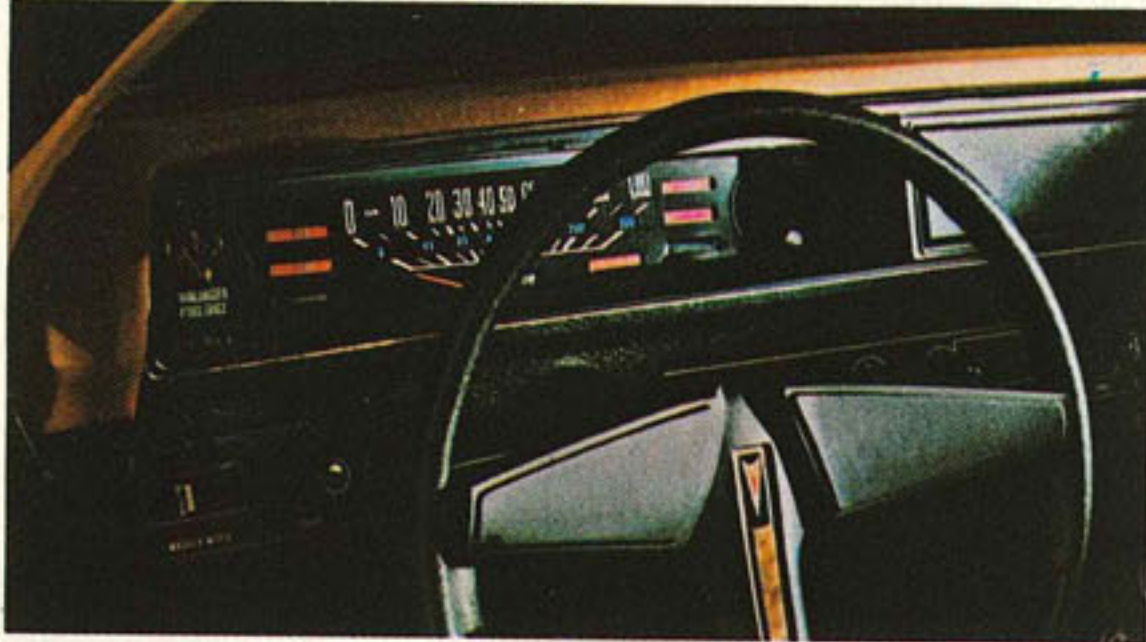
Above: The Pontiac LeMans Safari.

Some of the equipment shown or mentioned is optional at extra cost.



Pontiac Astre Safari + Safari SJ

Non Catalytic Converter Equipped



The Astre's functional and attractive instrument panel.

Pontiac's littlest wagon turns in just 33 feet (curb to curb) and moves quite nimbly and economically with a four-cylinder overhead cam engine. Yet, it's



not so little inside. Swing up the wide-opening liftgate, fold down the rear seats and you've got over 5½ ft. of cargo length.

Above: Small on the outside, the Astre Safari offers over 5½ ft. of cargo length inside.

Left: The luxurious Astre Safari SJ.

The Astre Safari is surprisingly luxurious as well as being surprisingly commodious. There's simulated wood-grain interior trim, rich feeling cut-pile carpeting and comfortable full-foam seats.

This year, Astre's four cylinder engine has a 2-barrel carburetor, with systems that can lengthen tune-up intervals and give you better starts.

People who want a little more flair in their lives can turn their Astre Safari

into an even sportier little wagon with the GT package. It includes a Custom Cushion steering wheel, informative GT instrumentation, Rally wheels and more... You can also order an Astre Safari in the "SJ" configuration.

But whatever kind of Astre Safari you decide on, you'll end up with a little wagon that's versatile and economical.

Ask your salesman to tell you about our new High Energy Ignition system on all Astre Safaris.



Foreground: The Astre Safari.

Background: The Astre Safari with optional simulated woodgrain panels and roof luggage carrier.

Some of the equipment shown or mentioned is optional at extra cost.

Standard features...a partial list

Astre Safari station wagon. Standard features include: 140 CID 4 cylinder 2-barrel overhead cam engine with 3-speed manual transmission; anodized aluminum bumpers; front manual disc brakes with audible wear sensors; power ventilation system; full foam seats; two spoke steering wheel with a soft vinyl center pad; 2 speed electric windshield wipers; lift-up tailgate with vertical moldings; concealed storage area; full-coil suspension with computer-selected springs.

LeMans Safari station wagons. Standard features include: hydraulic bumper system with front bumper guards; lift-up tailgate with vertical moldings; power brakes with front discs/rear drums; full-foam seat construction; tailgate ajar warning lamp; vinyl-painted textured steel cargo floor; hidden storage compartment under cargo floor; double panel roof with perforated inner acoustical panel; powered High/Low ventilation; windshield embedded antenna; full-coil suspension with computer-selected springs; front and rear armrests.

Grand LeMans Safari station wagon. All Le Mans Safari standard features plus: Custom Cushion steering wheel; deluxe wheel covers, wheel opening moldings; added sound insulation; body color outside door handles; hood rear edge molding; stand-up hood ornament; distinctive instrument panel with clock; carpeted lower door trim panels; bright

trim and wood applique on door panels; custom pedal trim plates; Notchback bench seat; pull straps on doors; carpeted load floor; column mounted dimmer switch.

Laurentian Safari station wagons. Standard features include: 3-speed Turbo Hydra-matic transmission; variable-ratio power steering; power brakes with front discs/rear drums; hydraulic bumper system; hidden storage compartment; disappearing glideaway tailgate with power operated rear window that retracts into the roof; right-hand outside mirror; computer-selected springs with front coils and specific station wagon leaf spring rear construction; full-foam seats; Deluxe steering wheel in matching interior color; cut-pile carpeting; powered High/Low ventilation system.

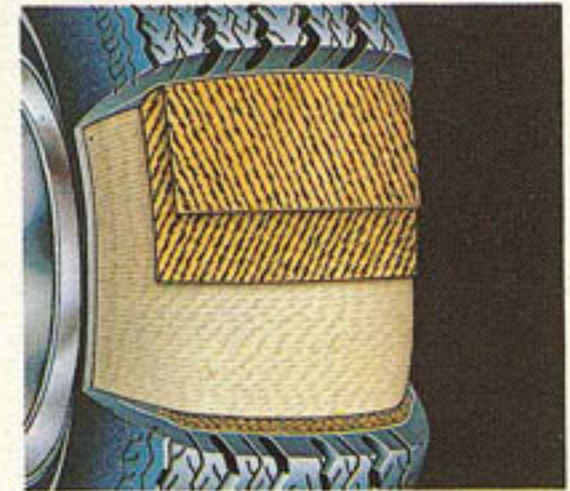
Catalina Safari station wagons. All Laurentian Safari standard features plus: two front ashtrays; additional sound insulation; additional convenience lamps; additional exterior moldings; windshield embedded antenna.

Grand Safari station wagons. All Catalina Safari standard features plus: Custom Cushion steering wheel in matching interior color; electric clock; pedal trim; deluxe wheel covers; wheel opening moldings; carpeted load floor; upgraded body insulation.

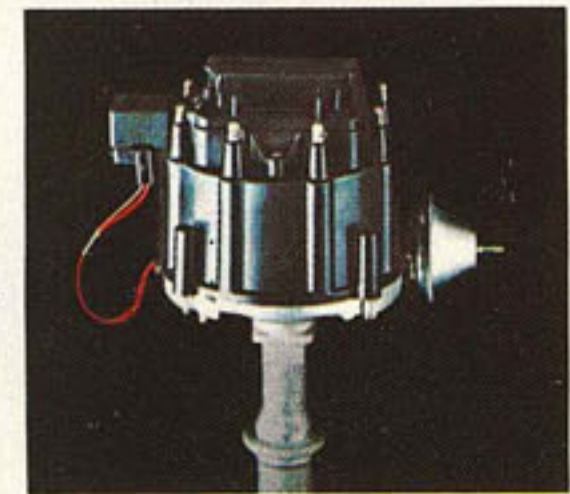
The Pontiac Travel Plan.

Helping you to enjoy better driveability is just part of the Pontiac Travel Plan.

STEEL-BELTED RADIAL TIRES—offer longer tire life and better operating economy; they come with Radial Tuned Suspension.



HIGH-ENERGY IGNITION—helps improve engine performance and eliminates points and condenser replacement.



***CATALYTIC CONVERTER**

The Converter, requiring unleaded gasoline, allows calibration of the engine for lower idling speeds, quicker warm-up and smoother overall performance.



***QUICK WARM-UP SYSTEM**—helps improve fuel economy under cold engine starting conditions.

*Not available on Astre Safari Wagons.

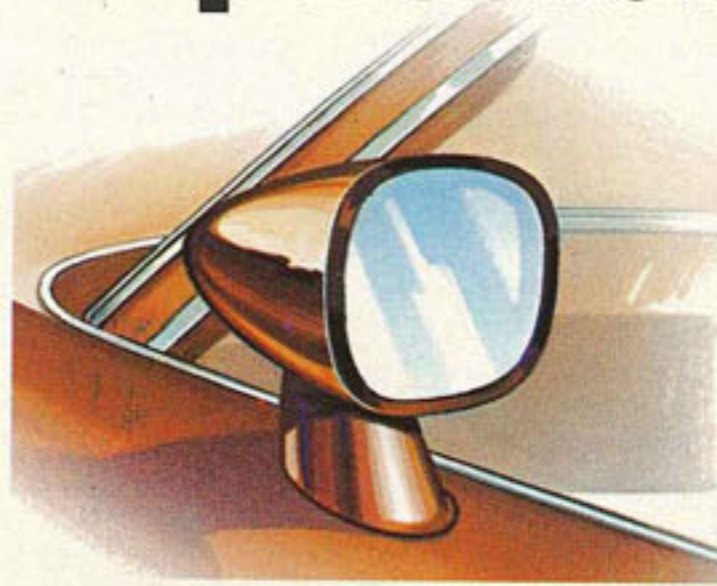
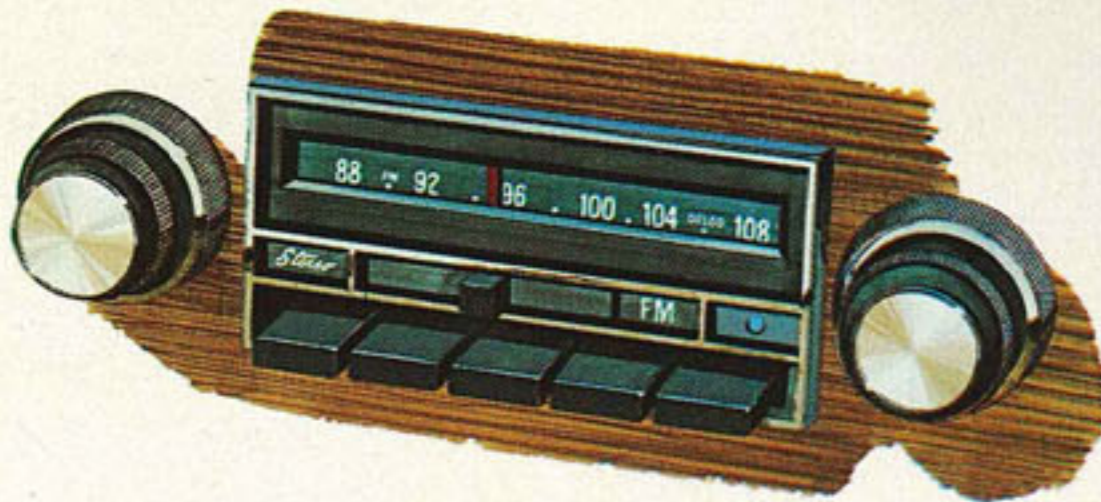
Options-Add your own personal touch

Express your individuality while adding even more to your pleasure, comfort and convenience. Enjoy your new station wagon your way. Your salesman can tell you about other options not shown or mentioned here.



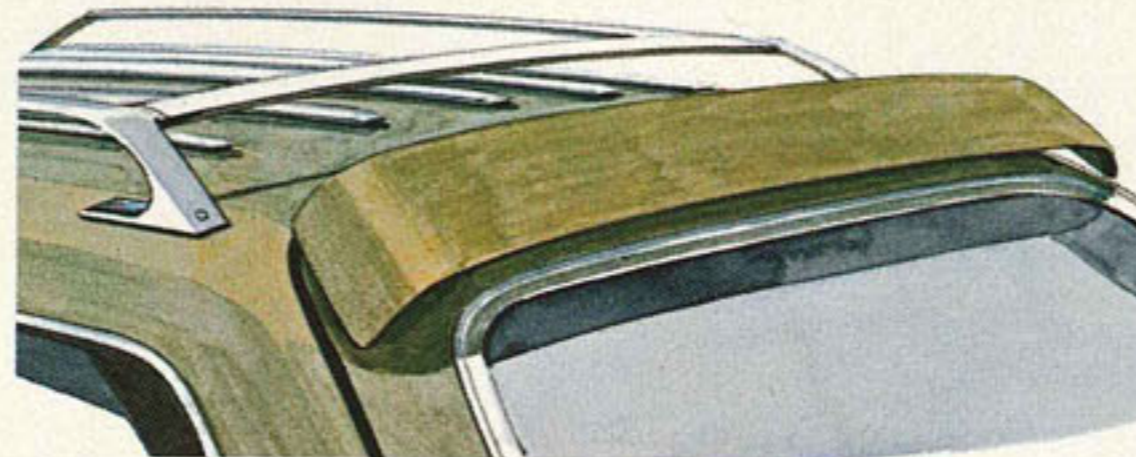
Air Conditioning. A manual air conditioning system is available on all Safari wagons and mid-size and full-size models also offer a new, simplified automatic system.

Sound Systems. You've a choice of AM, AM/FM or AM/FM Stereo radios on all the station wagons. In addition, mid-size and full-size wagons offer an integral 8-track Stereo tape player with multi-speakers.

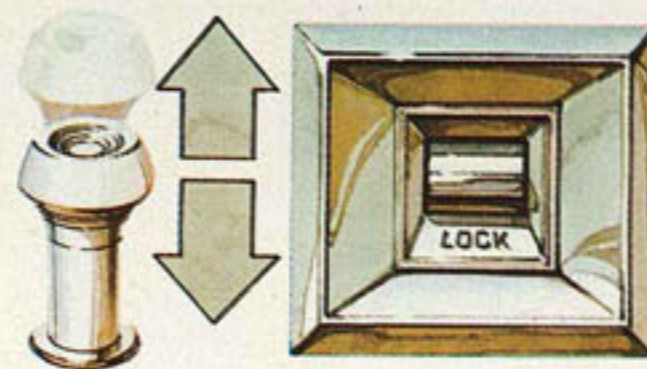


Custom Sports Mirrors. Aerodynamically-designed outside mirrors in the same color as the body of your wagon.

Driver's mirror is remote-controlled. On a mid-size or full-size Safari, you can have the right-hand mirror also remote-controlled from the driver's position at extra cost.

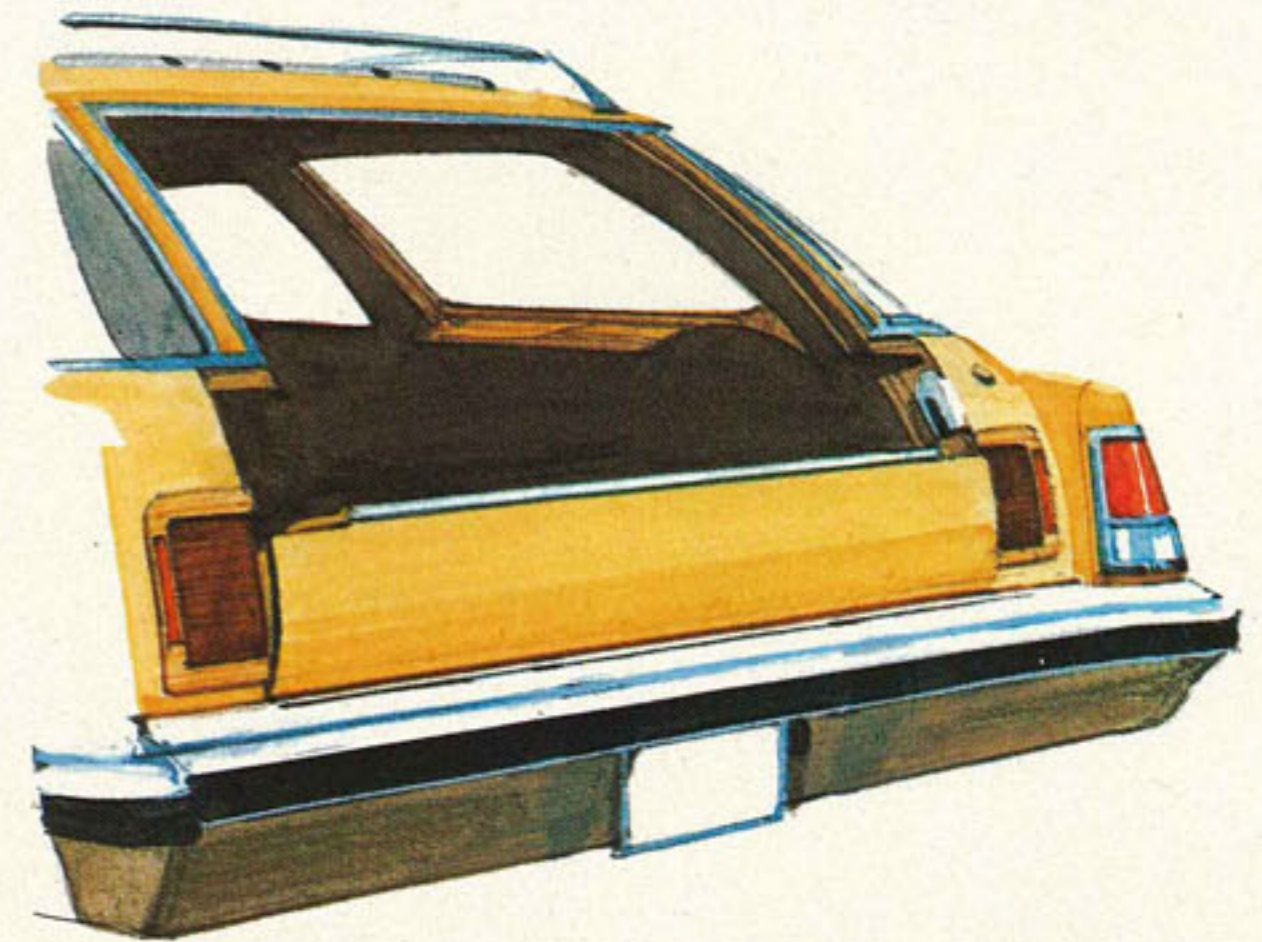


Roof Luggage Carrier. The bright chrome and stainless-steel carrier installs permanently on all Pontiac station wagons. Astre and intermediate wagons also offer a rear window air deflector to help keep the glass area free of dust (not necessary on full-size wagons because of roof design).



Power Door Locks. Lock or unlock all doors at once. There are separate controls for the driver and front passenger.

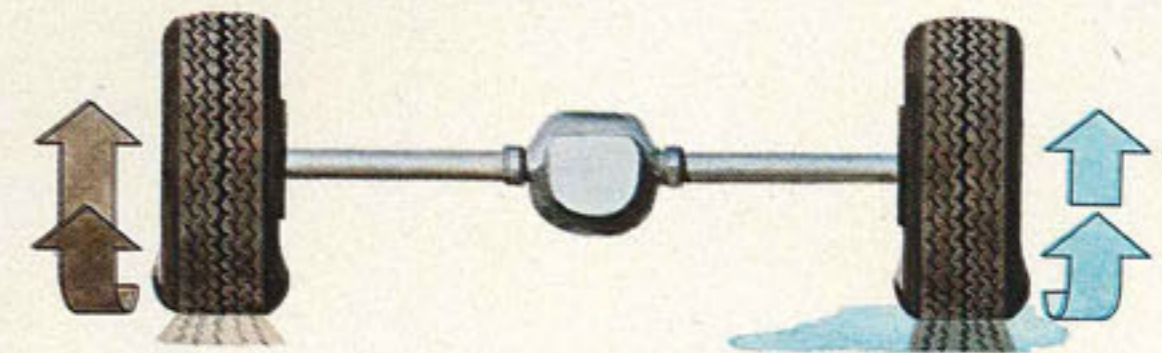
Not available on Astre Safari.



Power Tailgate. Full-size Safari wagons only. Tailgate can be lowered or raised with a key from outside, at the rear, or with a switch on the instrument panel. Power rear window is standard on full size.

Tilt Steering Wheel. Available on all wagons with optional steering wheels on some models. Ask for details.

Safe-T-Track Rear Axle. Transfers torque to the rear wheel that has the best traction. Helps give surer handling when you hit a slippery road, mud or sand.



Specifications

Catalytic Converter Equipped	GRAND LeMANS and LeMANS SAFARI	LAURENTIAN SAFARI	CATALINA SAFARI	GRAND SAFARI
Body Styles	2-seat 3-seat	2-seat 3-seat	2-seat 3-seat	2-seat 3-seat
Engines Standard Optional	400-4 V8 400-4 V8	400-4 V8 455-4 V8	400-4 V8 455-4 V8	400-4 V8 455-4 V8
Transmissions Standard Optional	Hydra-matic	Hydra-matic	Hydra-matic	Hydra-matic
Brakes Front disc/rear drum Power	Standard Standard	Standard Standard	Standard Standard	Standard Standard
Tires Standard	HR78 x 15	LR78 x 15	LR78 x 15	LR78 x 15
Wheelbase	116.0 in.	127.0 in.	127.0 in.	127.0 in.
Length	215.4 in.	230.7 in.	230.7 in.	230.7 in.
Height	55.3 in.	57.1 in.	57.1 in.	57.1 in.
Width	77.9 in.	79.8 in.	79.8 in.	79.8 in.
Fuel Tank Capacity (app.)	18.3 Imp. Gal.	18.3 Imp. Gal.	18.3 imp. Gal.	18.3 Imp. Gal.
Headroom front rear	38.9 in. 39.4 in.	39.8 in. 39.3 in.	39.8 in. 39.3 in.	39.8 in. 39.3 in.
Legroom front rear	42.5 in. 33.5 in.	42.6 in. 37.4 in.	42.6 in. 37.4 in.	42.6 in. 37.4 in.
Shoulder Room front rear	56.6 in. 58.9 in.	64.0 in. 63.1 in.	64.0 in. 63.1 in.	64.0 in. 63.1 in.
Hip Room front rear	56.0 in. 55.1 in.	59.3 in. 58.9 in.	59.3 in. 58.9 in.	59.3 in. 58.9 in.
Cargo Volume	85.1 cu. ft.	106.4 cu. ft.	106.4 cu. ft.	106.4 cu. ft.

Not Catalytic Converter Equipped	ASTRE SAFARI and ASTRE SJ SAFARI
Body Styles	2-seat —
Engines Standard Optional	140-2 Four
Transmissions Standard Optional	3-spd. manual 4-spd. manual (std. SJ) Hydra-matic
Brakes Front disc/rear drum Power	Standard Optional
Tires Standard	BR78 x 13
Wheelbase	97.0 in.
Length	175.1 in.
Height	52.0 in.
Width	65.4 in.
Fuel Tank Capacity (app.)	13.3 Imp. Gal.
Headroom front rear	38.6 in. 37.6 in.
Legroom front rear	41.1 in. 32.8 in.
Shoulder Room front rear	51.6 in. 49.2 in.
Hip Room front rear	49.2 in. 42.5 in.
Cargo Volume	50.2 cu. ft.

This literature is applicable only to 1975 General Motors vehicles equipped with a Catalytic Converter and to non Catalytic Converter equipped Astre Safari and Astre SJ Safari, pages 8 and 9.

The illustrations in this catalogue do not necessarily show standard colors, materials and equipment. General Motors of Canada Limited reserves the right to make changes at any time without notice, in prices, colors, materials, equipment, specifications and models, and also to discontinue models. This right may be exercised without incurring any responsibility with regard to cars previously sold.

GENERAL MOTORS OF CANADA LIMITED • OSHAWA, ONTARIO



GM-4565 Printed in Canada