

1956-1965 FORD MODEL AND ENGINE IDENTIFICATION GUIDE

*Use this Guide to identify accurately
the Ford you are servicing.*



COPYRIGHT © 1964—FORD MOTOR COMPANY—DEARBORN, MICHIGAN

WARRANTY AND RATING PLATE INFORMATION

1956-1957 FORD PASSENGER CARS AND TRUCKS

1958-1959-1960 FORD PASSENGER CARS AND TRUCKS

1961-1962 FORD PASSENGER CARS AND TRUCKS

1963 FORD PASSENGER CARS AND TRUCKS

1964 FORD PASSENGER CARS AND TRUCKS

1965 FORD PASSENGER CARS AND TRUCKS

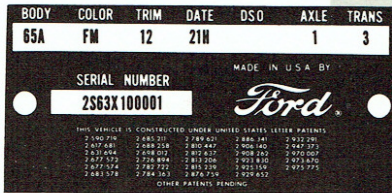
Important: to get the right part every time, always give Warranty Plate or Rating Plate Information

The Passenger Car Warranty Plate and Truck Rating Plate are the only sources for certain information. For example, when ordering parts in the following areas, reference to the warranty plate, patent

plate or rating plate is an absolute necessity: SOFT TRIM • COLOR • TRANSMISSION • AXLES • ENGINE • CARBURETION



TYPICAL CAR WARRANTY PLATE—1963-65



TYPICAL CAR PATENT PLATE—1962

TYPICAL CAR WARRANTY PLATE—1963-65

The 1963-65 Warranty Plate is located on the left front door-lock face panel on all models, including Falcon Bus, except the 1963 Galaxie plate which is located on the left front body pillar.

Indicated in the VEHICLE WARRANTY NUMBER line, formerly "Serial Number" are the Model Year, Assembly Plant, Series and Body Type, Engine Type and Numerical Sequence of Assembly.

Vehicle Warranty Number (Formerly Serial Number)

4561X100001

"4"—1964 Model

"S"—Assembled at Pilot Plant

"61"—(6) Galaxie 500 Series, (1) 2 Door Sedan

"X"—8 cyl. OHV Engine—352 C.I.D.—4 Venturi Carburetor

"100001"—First Galaxie Series vehicle assembled at Pilot Plant during Model Year

Vehicle Data Specifications (62A-DM-17-26H-33-1-3)

"62A"—Galaxie, 2 Door Sedan

"DM"—Dynasty Green lower body, Wimbledon White upper body—Conventional two-tone. (When vehicle is two-toned, the lower body color code will appear first.)

"17"—First digit "1" represents material—Chain Weave Fabric and Crush Vinyl. Second digit "7" represents color—Light Turquoise D/L. When a trim deviation is used and is not serviced, a numerical suffix is added to the Trim Code, i.e. (17-1, 17-2). If the trim deviation is serviced, an alphabetical suffix is added to the Trim Code, i.e. (17 A, 17 B).

"26H"—Twenty-sixth Day of Month—August

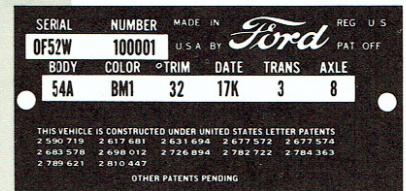
January	A	May	E	September	J
February	B	June	F	October	K
March	C	July	G	November	L
April	D	August	H	December	M

"33"—Detroit District (and DSO number when applicable). The District Code No. will appear in the DSO space for all units including regular production. If the unit was built on DSO, FSO or LPO (special orders), the complete order number will appear in addition to the District Code No.)

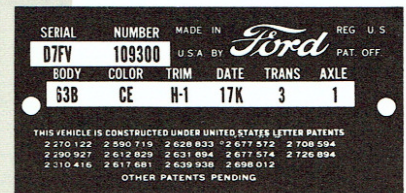
"1"—Rear Axle Ratio of 3.00 to 1

"3"—Cruise-O-Matic (3 speed) Automatic Transmission

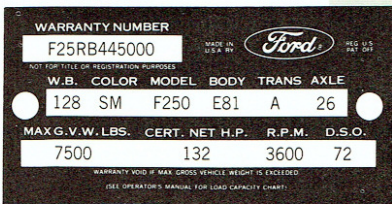
Information on prior model patent plates (see samples) is similar except for the sequence of the headings and the use of a "Serial Number" instead of a "Vehicle Warranty Number."



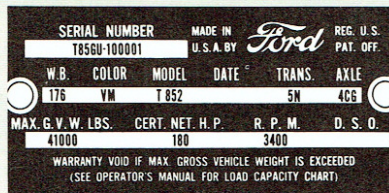
TYPICAL CAR PATENT PLATE—1960-61



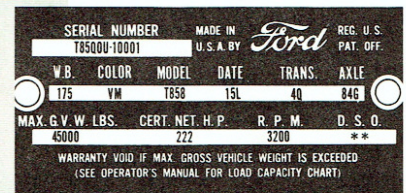
TYPICAL CAR PATENT PLATE—THRU 1959



TYPICAL TRUCK RATING PLATE—1963-65



TYPICAL TRUCK RATING PLATE—1961-62



TYPICAL TRUCK RATING PLATE—THRU 1960

RATING PLATE—is installed on the left front door lock face panel, or glove box door, depending on model. On the Parcel Delivery it is located on the right-hand dash panel. A breakdown of the important information given by the sample rating plate for all trucks and Econoline Pick-Up and Van is as follows:

- Warranty Number (F25RB445000) (Formerly identified as Serial Number)
- "F25"—F250 Conventional
- "R"—Type of engine—6 cyl. 262 C.I.D. with 1 venturi carb.
- "B"—Assembled at San Jose Plant
- Vehicle Data Specifications 128-SM-F250-E81-A-26-72
- "128"—Wheelbase in inches
- "SM"—Green and White
- "F250"—Light Truck with necessary equipment to rate a 7500 lb. G.V.W.
- "E81"—Custom Red woven plastic, interior trim. Conventional F Cab
- "A"—Designates the type of main transmission installed
- "26"—Two symbols representing the axle ratio
- "72"—District Code (San Jose)—followed by DSO number when applicable

Information on prior model patent plates (see samples) is similar except for the sequence of the headings and the use of a "Serial Number" instead of a "Vehicle Warranty Number."

A production *serial and warranty number block system* is used to identify annual model programs and extended production cycles without the use of model year designation. The monthly assignment of numbers is indicated in the following blocks:

AUGUST	580,000 thru 587,999	MARCH	660,000 thru 671,999
SEPTEMBER	588,000 thru 599,999	APRIL	672,000 thru 683,999
OCTOBER	600,000 thru 611,999	MAY	684,000 thru 695,999
NOVEMBER	612,000 thru 623,999	JUNE	696,000 thru 707,999
DECEMBER	624,000 thru 635,999	JULY	708,000 thru 719,999
JANUARY 1965	636,000 thru 647,999	AUGUST	720,000 thru 731,999
FEBRUARY	648,000 thru 659,999	SEPTEMBER	732,000 thru 743,999

WARRANTY AND RATING PLATE INFORMATION

1956-1957 FORD PASSENGER CARS AND TRUCKS

1958-1959-1960 FORD PASSENGER CARS AND TRUCKS

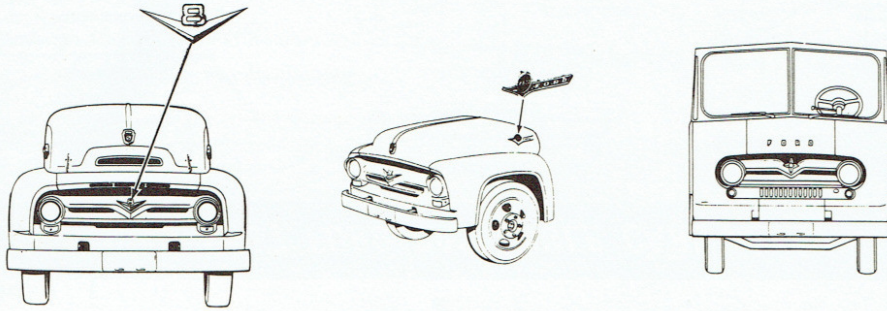
1961-1962 FORD PASSENGER CARS AND TRUCKS

1963 FORD PASSENGER CARS AND TRUCKS

1964 FORD PASSENGER CARS AND TRUCKS

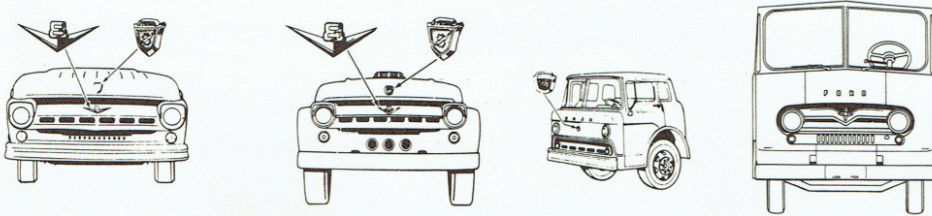
1965 FORD PASSENGER CARS AND TRUCKS

1956 FORD TRUCKS



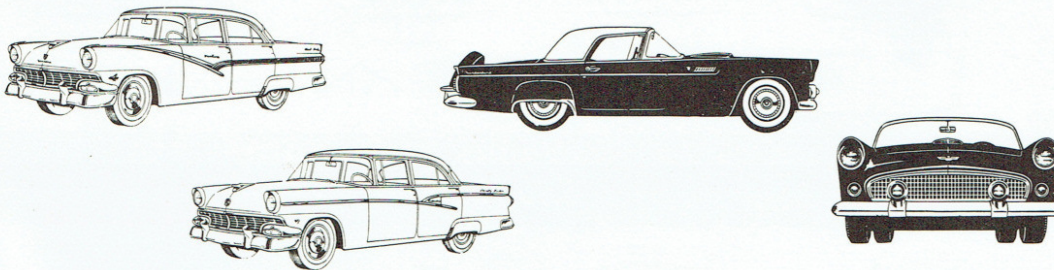
ENGINE CODE SHOWN ON WARRANTY PLATE	NO. OF CYLINDERS	CUBIC INCH DISPLACEMENT	NUMBER OF CARBURETOR VENTURI	ENGINE TYPE
D	6	223	1	OHV
V	8	272	2	OHV
Z	8	272	2	OHV-HD
R	8	272	4	OHV-HD
J	8	302	2	OHV-HD
A	8	302	4	OHV-HD
K	8	332	2	OHV-HD
S	8	332	4	OHV-HD

1957 FORD TRUCKS



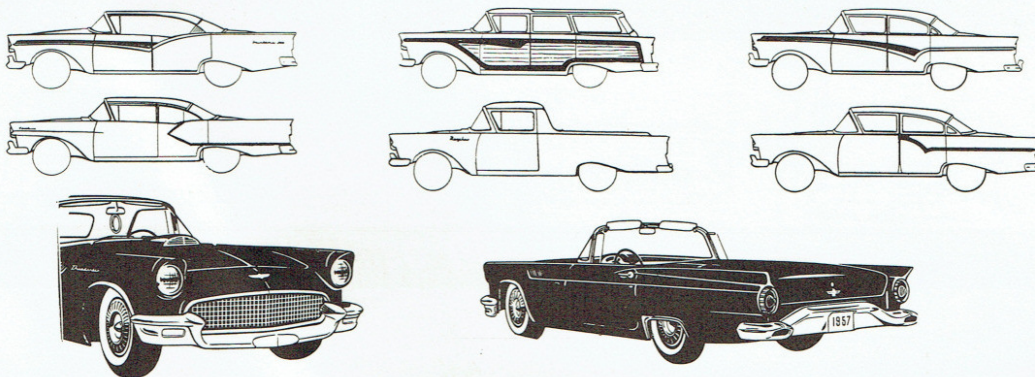
J	6	223	1	OHV
K	8	272	2	OHV
L	8	272	2	OHV-HD
U	8	272	4	OHV-HD
N	8	302	4	OHV-HD
F	8	332	4	OHV-HD

1956 FORD PASSENGER CARS



A	6	223	1	OHV
M	8	292	4	OHV
P	8	312	4	OHV
U	8	272	2	OHV

1957 FORD PASSENGER CARS



A	6	223	1	OHV
B	8	272	2	OHV
C	8	292	2	OHV
D	8	312	4	OHV
E	8	312	8	OHV
F	8	312	4	OHV Super-charger

1956-1957 FORD PASSENGER CARS AND TRUCKS

1958-1959-1960 FORD PASSENGER CARS AND TRUCKS

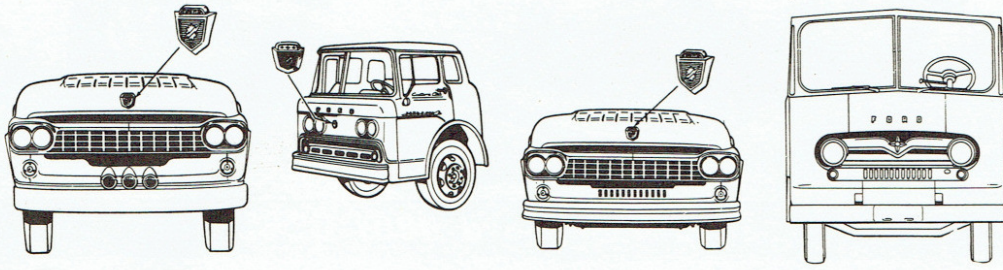
1961-1962 FORD PASSENGER CARS AND TRUCKS

1963 FORD PASSENGER CARS AND TRUCKS

1964 FORD PASSENGER CARS AND TRUCKS

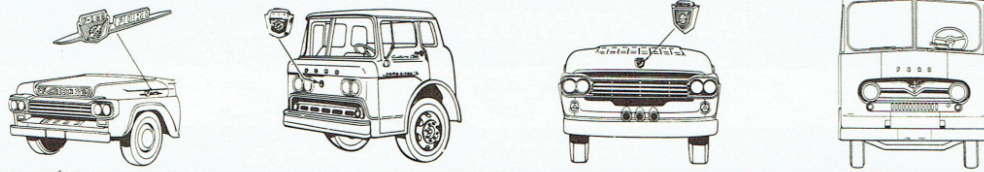
1965 FORD PASSENGER CARS AND TRUCKS

1958 FORD TRUCKS



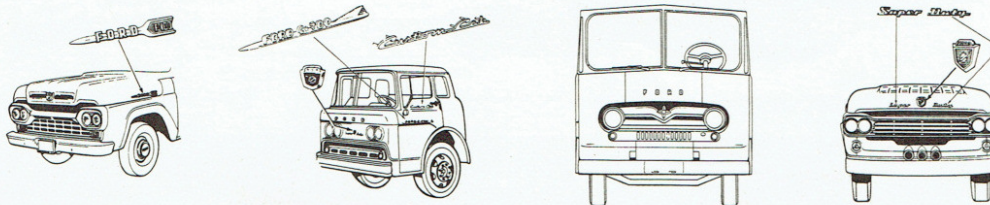
ENGINE CODE SHOWN ON WARRANTY PLATE	NO. OF CYLINDERS	CUBIC INCH DISPLACEMENT	NUMBER OF CARBUR-VENTORI	ENGINE TYPE
J	6	223	1	OHV
L	8	272	2	OHV
U	8	272	4	OHV-HD
C	8	292	2	OHV
D	8	292	4	OHV-HD
N	8	302	4	OHV-HD
F	8	332	4	OHV-HD
P	8	401	4	OHV-SD
Q	8	477	4	OHV-SD
R	8	534	4	OHV-SD

1959 FORD TRUCKS



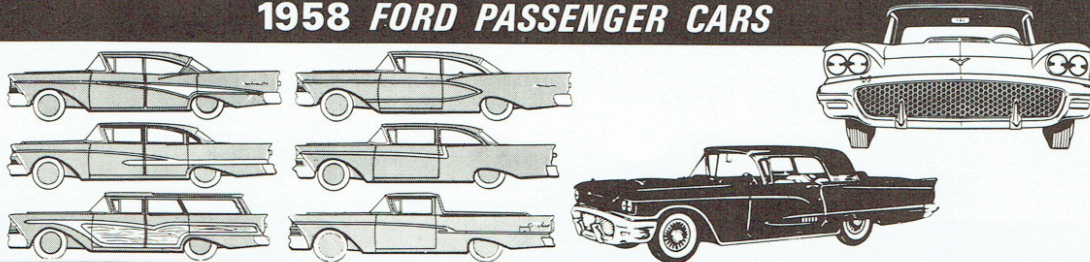
J	6	223	1	OHV
C	8	292	2	OHV
D	8	292	4	OHV-HD
N	8	302	4	OHV-HD
F	8	332	4	OHV-HD
P	8	401	4	OHV-SD
Q	8	477	4	OHV-SD
R	8	534	4	OHV-SD

1960 FORD TRUCKS



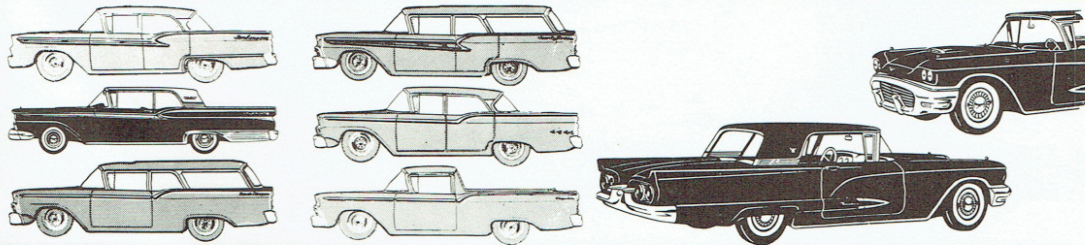
J	6	223	1	OHV
C	8	292	2	OHV
D	8	292	4	OHV-HD
N	8	302	4	OHV-HD
F	8	332	4	OHV-HD
G	8	401	2	OHV-SD
P	8	401	4	OHV-SD
H	8	477	2	OHV-SD
Q	8	477	4	OHV-SD
R	8	534	4	OHV-SD

1958 FORD PASSENGER CARS



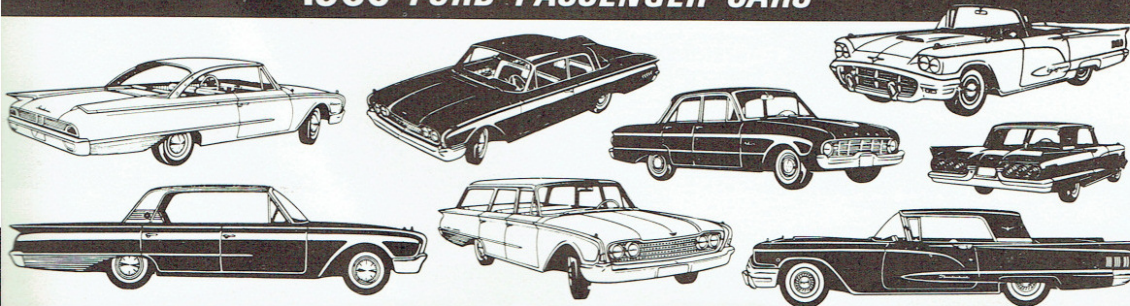
A	6	223	1	OHV
C	8	292	2	OHV
B	8	332	2	OHV
G	8	332	4	OHV
H	8	352	4	OHV

1959 FORD PASSENGER CARS



A	6	223	1	OHV
C	8	292	2	OHV
B	8	332	2	OHV
H	8	352	4	OHV
J	8	430	4	OHV

1960 FORD PASSENGER CARS



S	6	144	1	OHV
V	6	223	1	OHV
W	8	292	2	OHV
X	8	352	2	OHV
Y	8	352	4	OHV
J	8	430	4	OHV

1958-1959-1960 FORD PASSENGER CARS AND TRUCKS

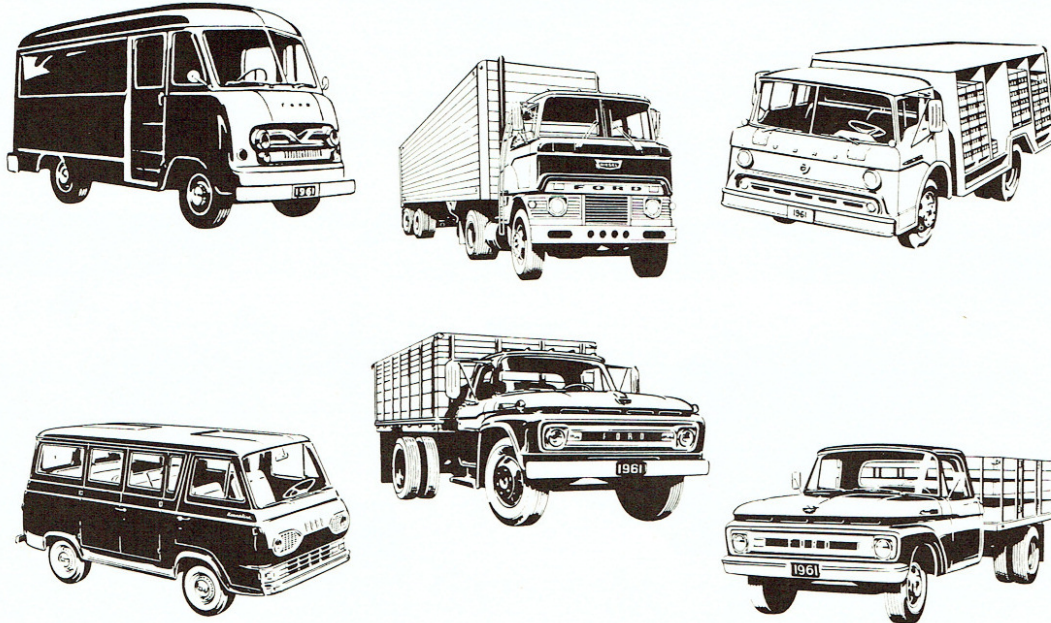
1961-1962 FORD PASSENGER CARS AND TRUCKS

1963 FORD PASSENGER CARS AND TRUCKS

1964 FORD PASSENGER CARS AND TRUCKS

1965 FORD PASSENGER CARS AND TRUCKS

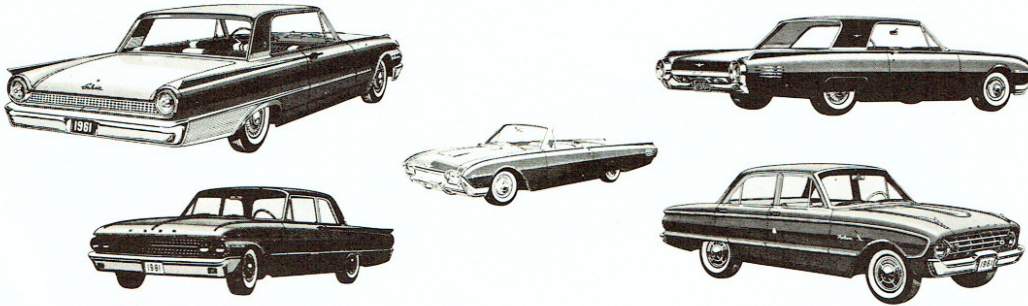
1961-62 FORD TRUCKS



ENGINE CODE SHOWN ON WARRANTY PLATE	NO. OF CYLINDERS	CUBIC INCH DISPLACEMENT	NUMBER OF CARBURRETOR VENTURI	ENGINE TYPE
S	6	144	1	OHV
T	6	170	1	OHV
A	6	223	1	OHV
J	6	223	1	OHV
B	6	262	1	OHV
C	8	292	2	OHV
D	8	292	4	OHV-HD
N	8	302	2	OHV
I	8	302	4	OHV-HD
F	8	332	2	OHV
W	8	332	4	OHV-HD
G	8	401	2	OHV-SD
P	8	401	4	OHV-SD
H	8	477	2	OHV-SD
Q	8	477	4	OHV-SD
R	8	534	4	OHV-SD
V	6	672	(NH-180)	DIESEL
X	6	743	(NH-220)	DIESEL
Y	6	743	(NHE-180) (Economy)	DIESEL
Z	6	743	(NHE-195) (Economy)	DIESEL
E	6	330	(Dagenham)	DIESEL
O	6	855	(NH-250)	DIESEL

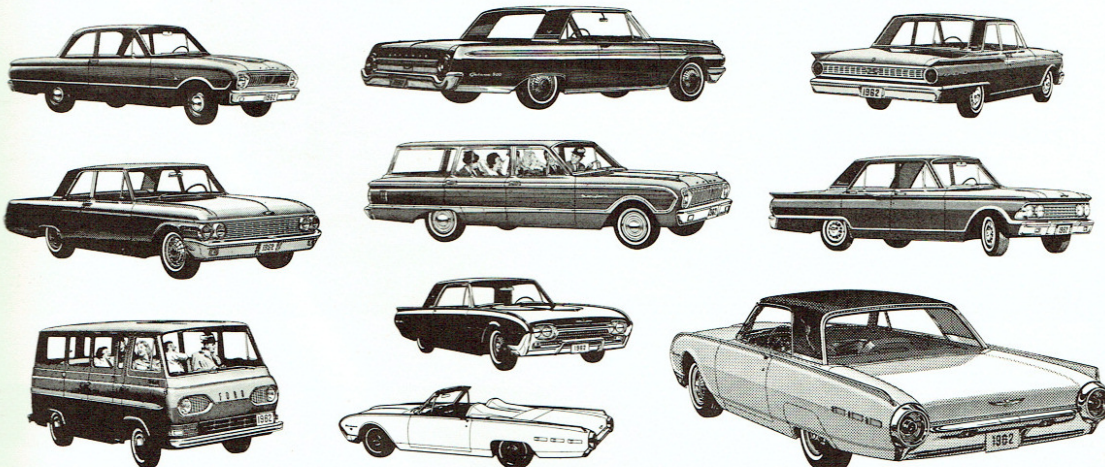


1961 FORD PASSENGER CARS



V	6	223	1	OHV
W	8	292	2	OHV
X	8	352	2	OHV
Z	8	390	4	OHV
S	6	144	1	OHV
U	6	170	1	OHV

1962 FORD PASSENGER CARS



V	6	223	1	OHV
W	8	292	2	OHV
X	8	352	2	OHV
S	6	144	1	OHV
U	6	170	1	OHV
Z	8	390	4	OHV
Q	8	390	4	OHV
M	8	390	6	OHV
L	8	221	2	OHV
F	8	260	2	OHV
B	8	406	4	OHV
G	8	406	6	OHV

1961-1962 FORD PASSENGER CARS AND TRUCKS

1963 FORD PASSENGER CARS AND TRUCKS

1964 FORD PASSENGER CARS AND TRUCKS

1965 FORD PASSENGER CARS AND TRUCKS

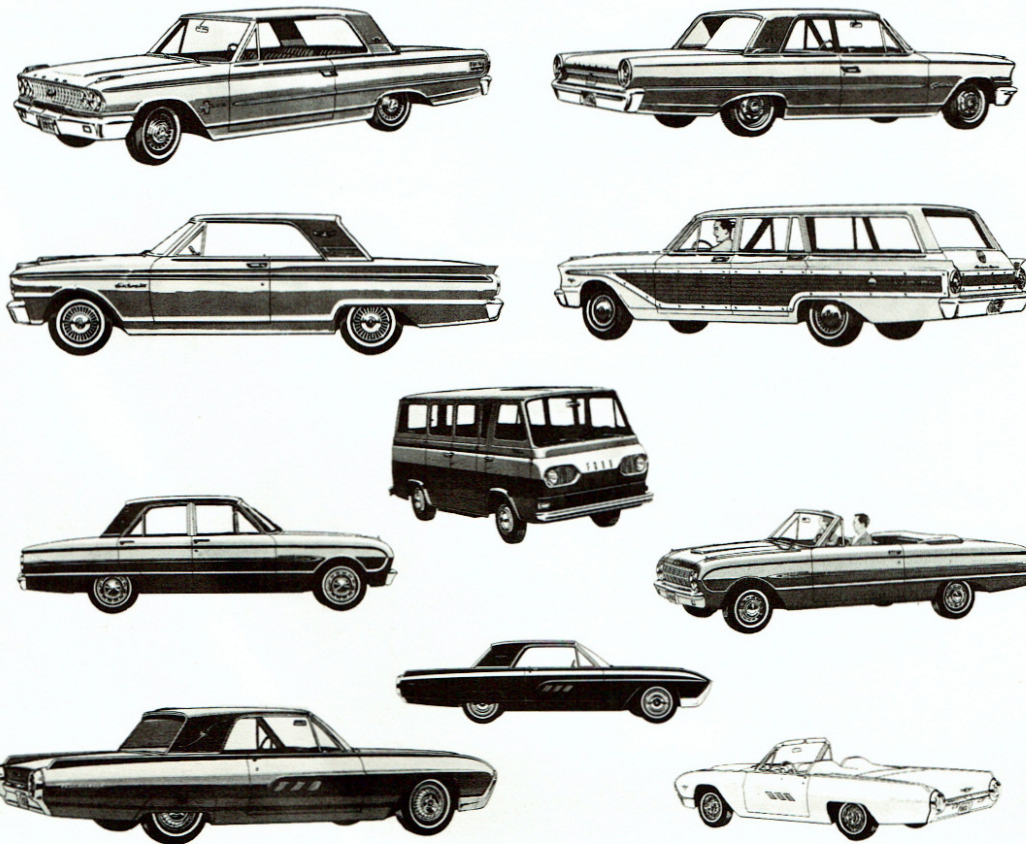
1963 FORD TRUCKS



ENGINE CODE SHOWN ON WARRANTY PLATE	NO. OF CYLINDERS	CUBIC INCH DISPLACEMENT	NUMBER OF CARBU-RETOR VENTURI	ENGINE TYPE
S	6	144	1	OHV
T	6	170	1	OHV
J	6	223	1	OHV
B	6	262	1	OHV
C	8	292	2	OHV
D	8	292	4	OHV-HD
N	8	302	2	OHV
I	8	302	4	OHV-HD
F	8	332	2	OHV
W	8	332	4	OHV-HD
G	8	401	2	OHV-SD
P	8	401	4	OHV-SD
H	8	477	2	OHV-SD
Q	8	477	4	OHV-SD
R	8	534	4	OHV-SD
4	4	220	(Dagenham)	DIESEL
E	6	330	(Dagenham)	DIESEL
2	6	588	(V6-200)	DIESEL
V	6	672	(NH-180)	DIESEL
X	6	743	(NH-220)	DIESEL
Y	6	743	(NHE-180) (Economy)	DIESEL
Z	6	743	(NHE-195) (Economy)	DIESEL
3	8	784	(V8-265)	DIESEL
O	6	855	(NH-250)	DIESEL

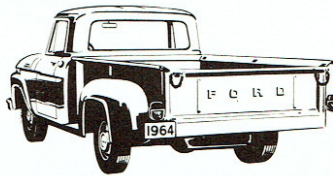
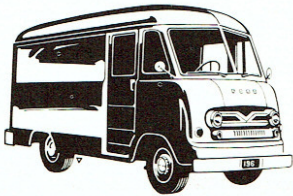
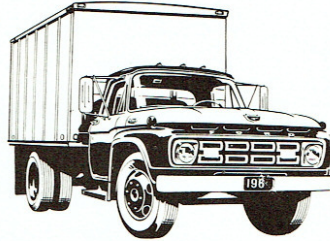
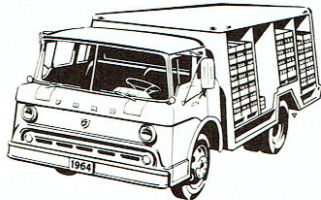
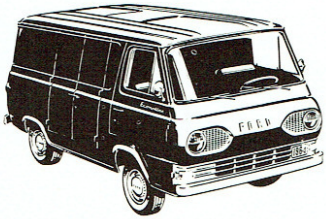
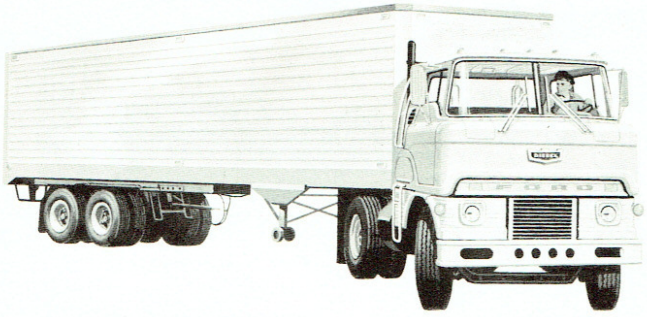


1963 FORD PASSENGER CARS



S	6	144	1	OHV
U	6	170	1	OHV
T	6	200	1	OHV
V	6	223	1	OHV
E	6	223	1 Taxi	OHV
L	8	221	2	OHV
F	8	260	2	OHV
C	8	289	2	OHV
K	8	289	4	OHV
X	8	352	2	OHV
Z	8	390	4	OHV
P	8	390	4 Police	OHV
B	8	406	4	OHV
G	8	406	6	OHV
Q	8	427	4	OHV
R	8	427	8	OHV
M	8	390	6	OHV

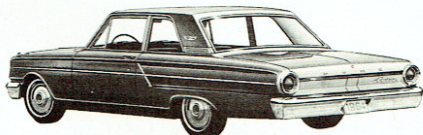
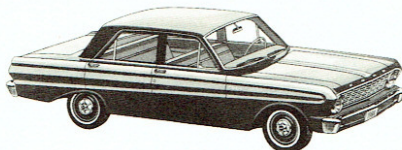
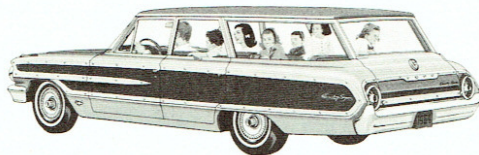
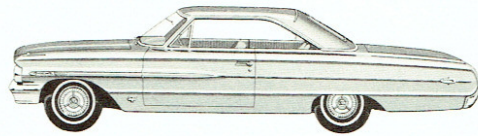
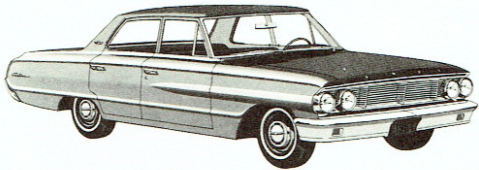
1964 FORD TRUCKS



ENGINE CODE SHOWN ON WARRANTY PLATE	NO. OF CYLINDERS	CUBIC INCH DISPLACEMENT	NUMBER OF CARBURETOR VENTURI	ENGINE TYPE
S	6	144	1	OHV
T	6	170	1	OHV
J	6	223	1	OHV
†B	6	262	1	OHV
C	8	292	2	OHV
D	8	292	4	OHV-HD
N	8	302	2	OHV
I	8	302	4	OHV-HD
A	8	330	2	OHV
M	8	330	2	OHV-HD
F	8	332	2	OHV
W	8	332	4	OHV-HD
K	8	361	2	OHV-HD
9	8	391	4	OHV-HD
G	8	401	2	OHV-SD
P	8	401	4	OHV-SD
H	8	477	2	OHV-SD
Q	8	477	4	OHV-SD
R	8	534	4	OHV-SD
4	4	220	(Ford)	DIESEL
E	6	330	(Ford)	DIESEL
2	6	588	(V6-200)	DIESEL
6	6	588	(V6E-195)	DIESEL
V	6	672	(NH-180)	DIESEL
X	6	743	(NH-220)	DIESEL
8	6	743	(NHE-225)	DIESEL
Y	6	743	(NHE-180) (Economy)	DIESEL
Z	6	743	(NHE-195) (Economy)	DIESEL
7	8	785	(V8E-235)	DIESEL
3	8	785	(V8-265)	DIESEL
0	6	855	(NH-250)	DIESEL

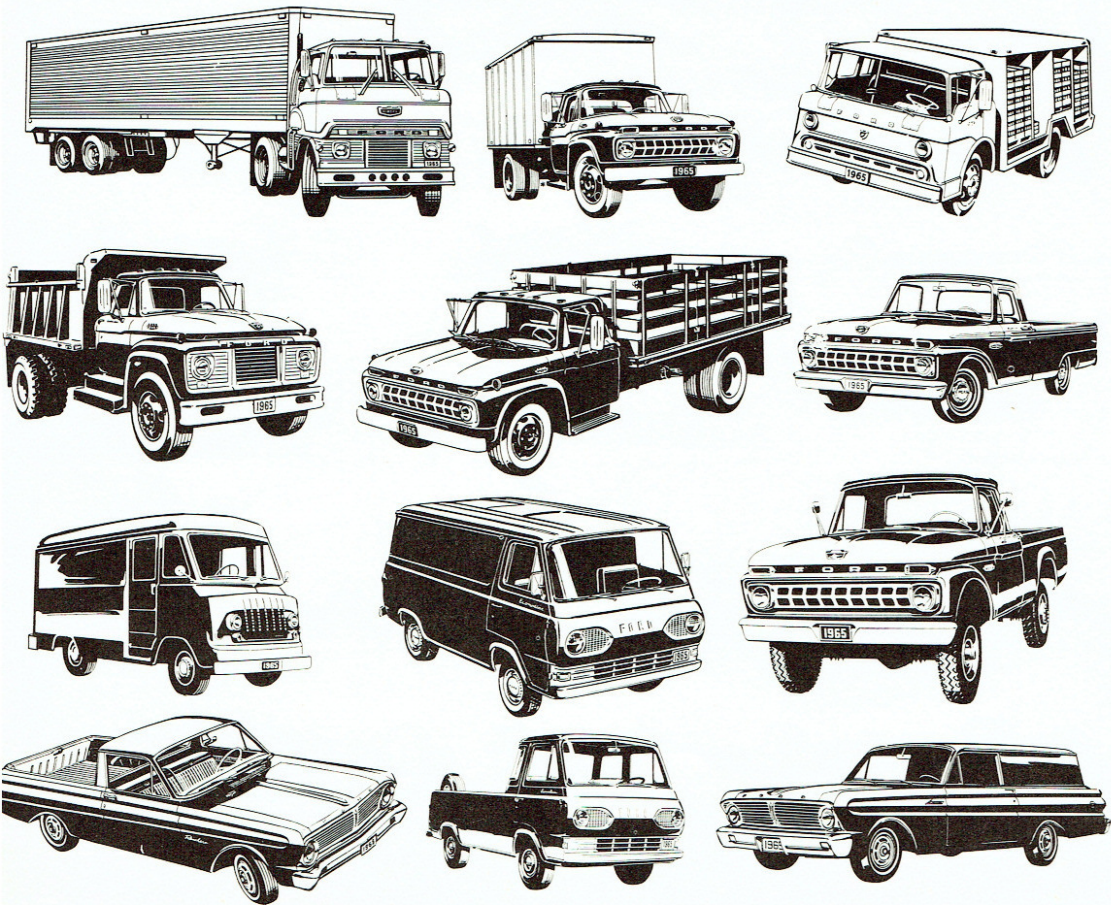
†F-100 and F-250, 262 OHV
C-550 and F-N-C-B-600, 262 OHV-HD

1964 FORD PASSENGER CARS



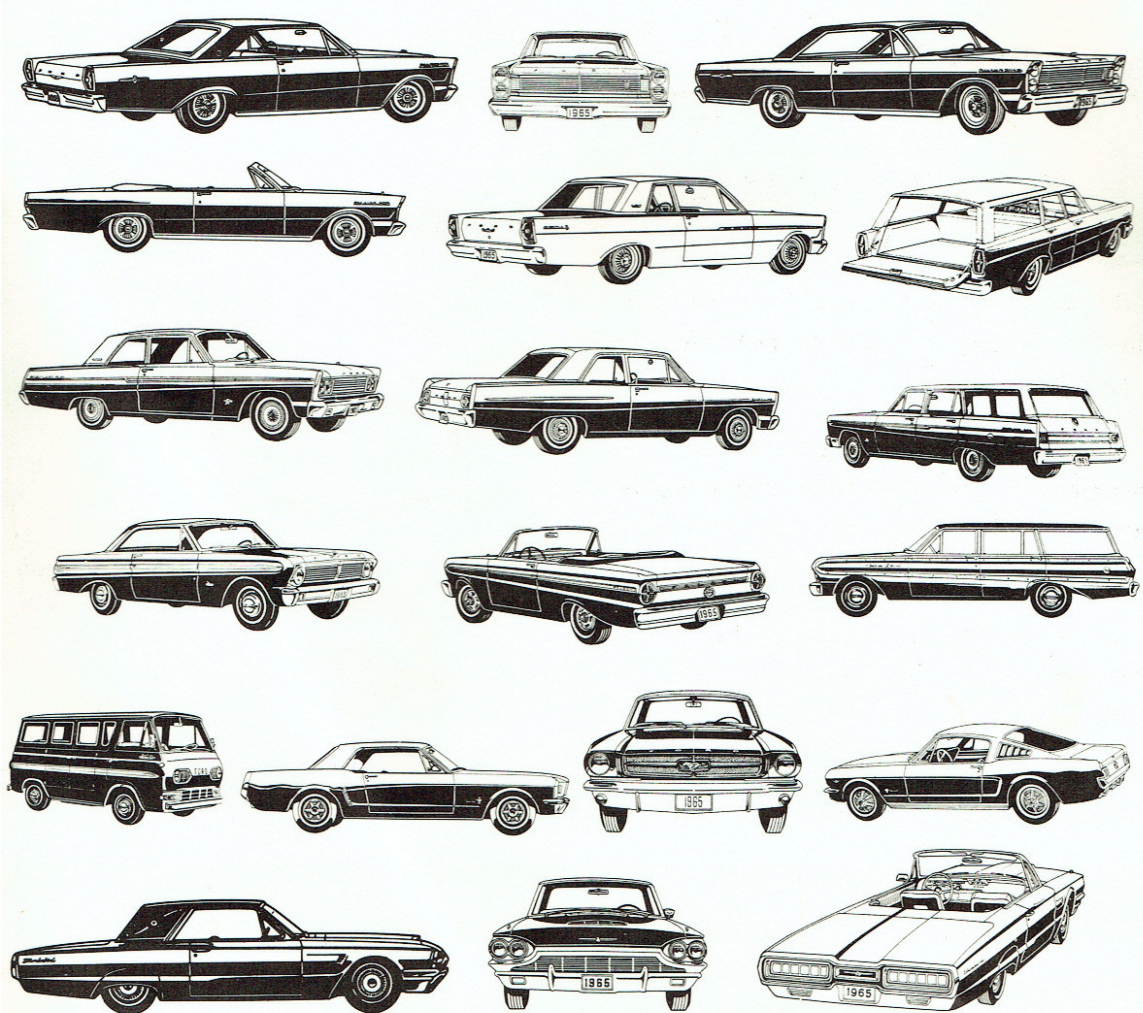
S	6	144	1	OHV
U	6	170	1	OHV
T	6	200	1	OHV
V	6	223	1	OHV
B	6	223	1 Police	OHV
E	6	223	1 Taxi	OHV
F	8	260	2	OHV
C	8	289	2	OHV
K	8	289	4	OHV
X	8	352	4	OHV
Z	8	390	4	OHV
P	8	390	4 Police	OHV
Q	8	427	4	OHV
R	8	427	8	OHV

1965 FORD TRUCKS



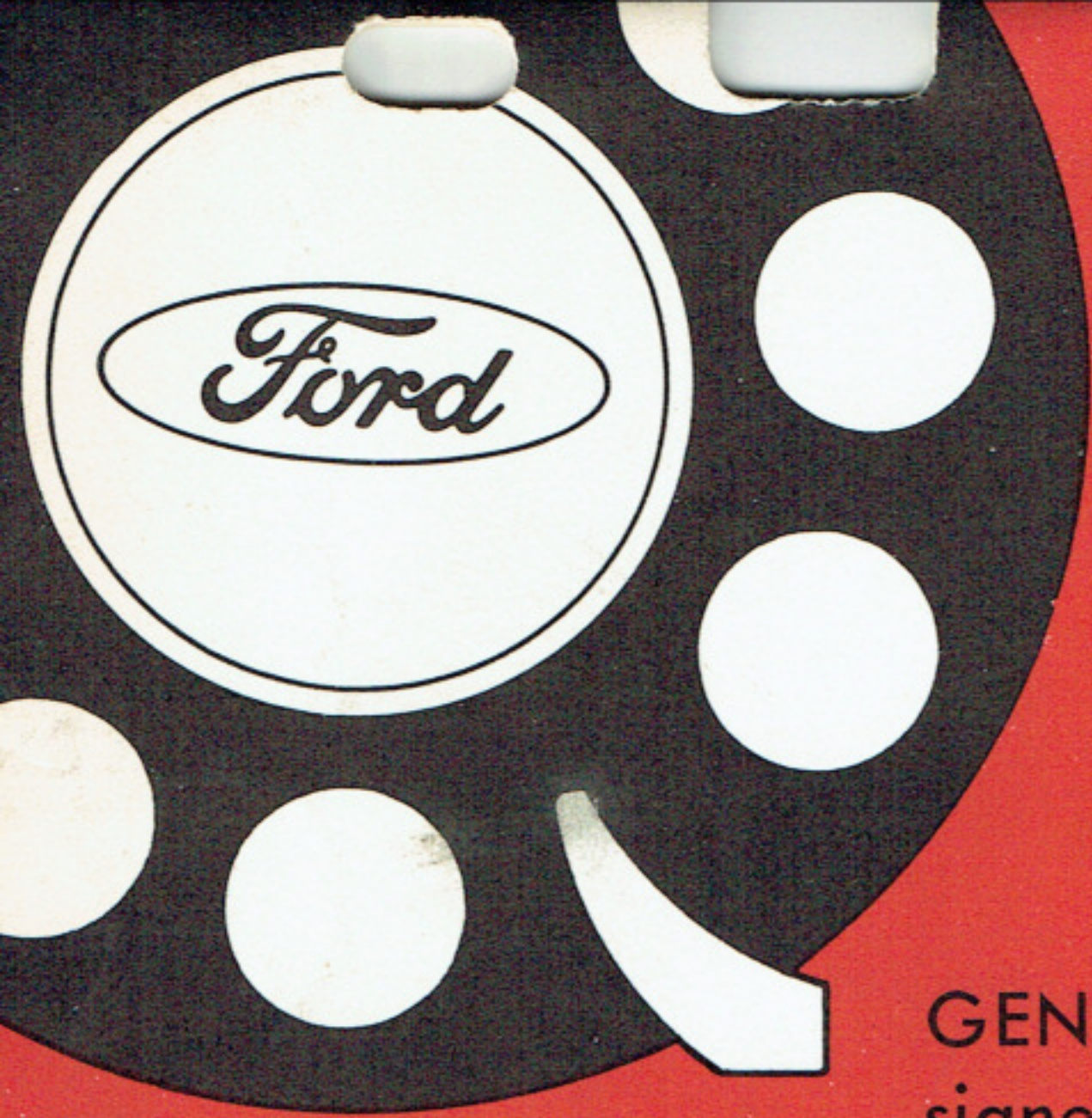
ENGINE CODE SHOWN ON WARRANTY PLATE	NO. OF CYLINDERS	CUBIC INCH DISPLACEMENT	NUMBER OF CARBURATOR VENTURI	ENGINE TYPE
T	6	170	1	OHV
S	6	200	1	OHV
4	4	220	(Ford)	Diesel
J	6	240	1	OHV
B	6	300	1	OHV
A	8	330	2	OHV-MD
M	8	330	2	OHV-HD
E	6	330	(Ford)	Diesel
D	8	352	2	OHV
K	8	361	2	OHV
9	8	391	4	OHV
G	8	401	2	OHV
P	8	401	4	OHV
H	8	477	2	OHV
Q	8	477	4	OHV
R	8	534	4	OHV
6	6	588	(V6E-195)	Diesel
X	6	743	(NH-220)	Diesel
Y	6	743	(NHE-180)	Diesel
Z	6	743	(NHE-195)	Diesel
3	8	784	(V8-265)	Diesel
7	8	784	(V8E-235)	Diesel
0	6	855	(NH-250)	Diesel
8	6	855	(NHE-225)	Diesel

1965 FORD PASSENGER CARS



U	6	170	1	OHV
T	6	200	1	OHV
V	6	240	1	OHV
B	6	240	1 Police	OHV
E	6	240	1 Taxi	OHV
F	8	260	2	OHV*
C	8	289	2	OHV
A	8	289	4 Premium	OHV
K	8	289	4 Hi-Perf.	OHV
D	8	289	4	OHV*
X	8	352	4	OHV
Z	8	390	4	OHV
P	8	390	4 Police	OHV
R	8	427	8 Hi-Perf.	OHV

*1964 1/2 Introduction



one call, that's all...

FOR THESE QUALITY PARTS!

GENUINE FoMoCo PARTS—are designed primarily for use in Ford Motor Company vehicles.

ROTUNDA PARTS—are designed for use in both Ford and *many other makes* of cars and trucks. They are made to the same exacting specifications set for Genuine FoMoCo Parts.

AUTOLITE PARTS—Spark plugs, batteries, alternators and other Autolite brand parts are also available to service Ford and other make vehicles.

Available from your Ford Dealer!

