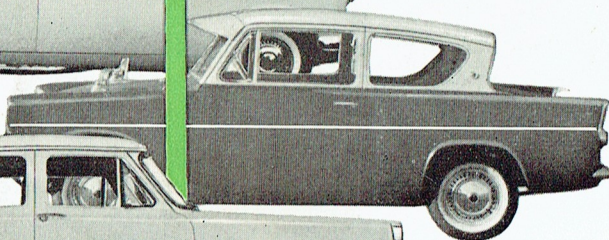
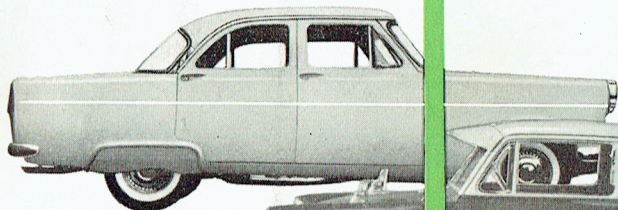


Styletone...

MOULDINGS AND FENDER SKIRTS



There are many attractive designs and combinations of Styletone Mouldings with Fender Skirts to enhance the sweeping lines of Zephyr, Consul Mark II Sedans 1959/-.

Attractively styled "Styletone" mouldings are produced for the exciting New Anglia 1960.

Styletone Mouldings are also available for Prefect 1954/- and for Zephyr and Consul Station Wagons 1959/-.

Choose from this extensive range to suit the extra "colourtone" paint combination you favour for your Ford vehicle.

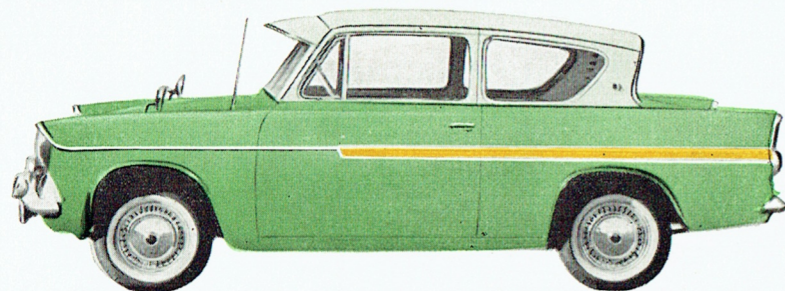
Styletone MOULDING KIT COMBINATIONS

for

Anglia, Prefect, Zephyr and Consul Sedans Mark II 1959/-

(also suitable for Station Wagons)

For the Exciting New Anglia 1960



A perfect combination of mouldings and extra colour tone for your New Anglia

Styletone Moulding for Prefect



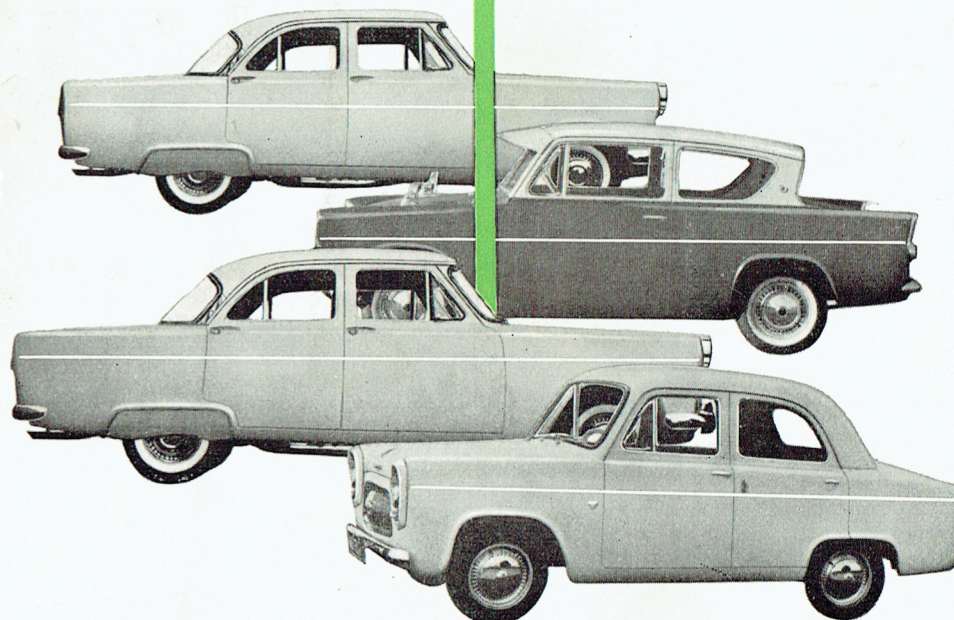
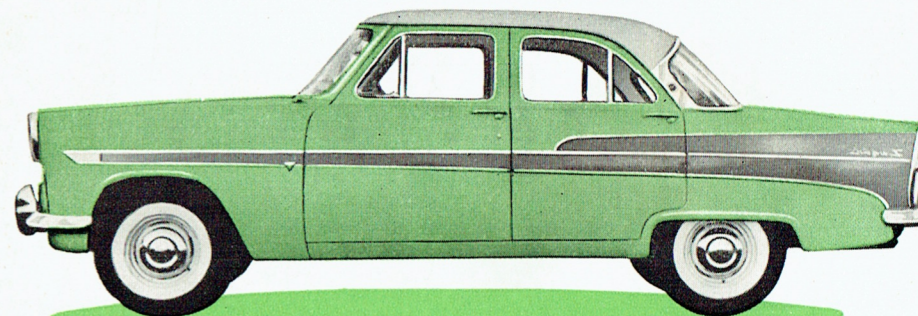
ARI00E 19600 B (Standard) Styletone Moulding Kit.
ARI00E 19600 A (De Luxe) for Prefect Sedan 1954/-.

For further details and prices

We have a complete range of Ford Accessories to meet your needs — Radio, Fresh Air Heater and Ventilating Systems, Exterior Sun Visors, Rear Venetian Shades, Seat Covers, Power Brakes, Overdrive, Windscreen Washer, De Luxe Rear Vision Mirrors, Wheel Discs, Extra Lights, Weathershields, Exhaust Deflectors — and a host of other accessories warranted suitable for Ford vehicles.

Styletone...

MOULDINGS AND FENDER SKIRTS



Styletone **MOULDING KIT COMBINATIONS**

for

Anglia, Prefect, Zephyr and Consul Sedans Mark II 1959/-

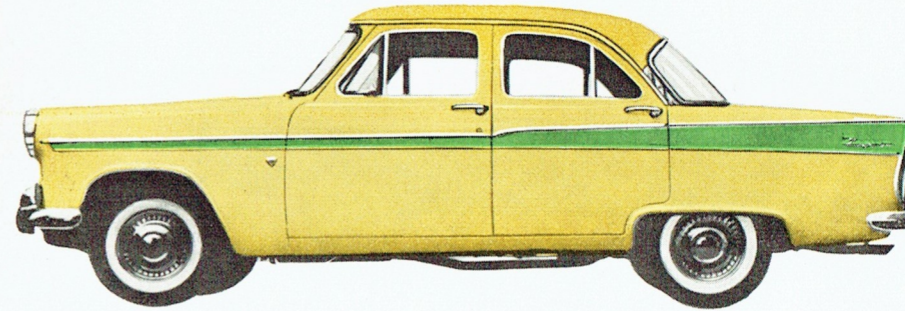
(also suitable for Station Wagons)

STYLELINE



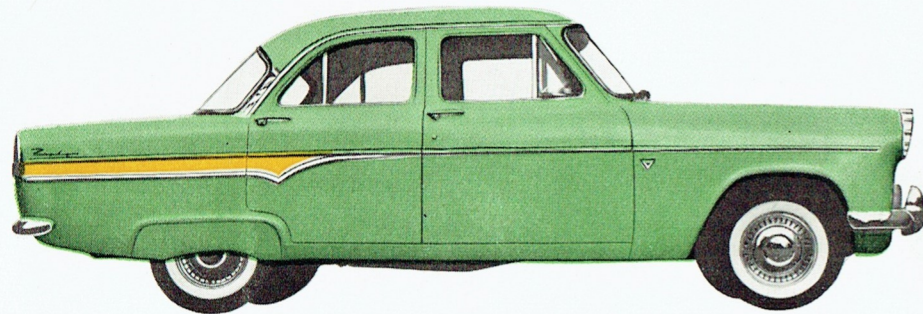
AR206E 19600 C Styleline Moulding Kit with A206E 18973 A Fender Skirts. For Zephyr Sedan 1959/-.

FASHIONLINE



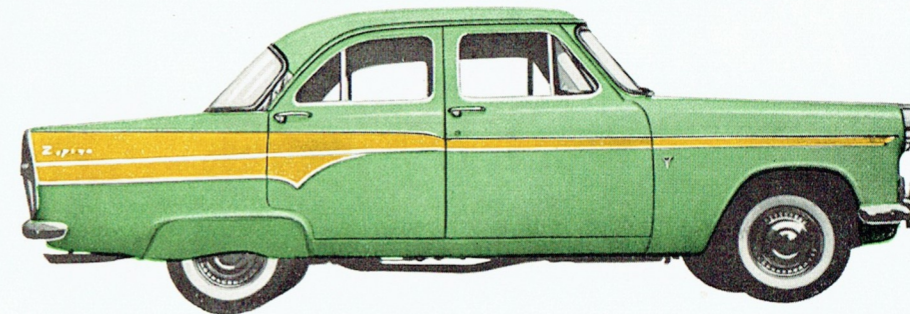
AR206E 19600 D Fashionline Moulding Kit, Fender Skirts A206E 18973 A can be fitted with this moulding kit if required. For Zephyr or Consul Sedans 1959/-.

FLASHLINE



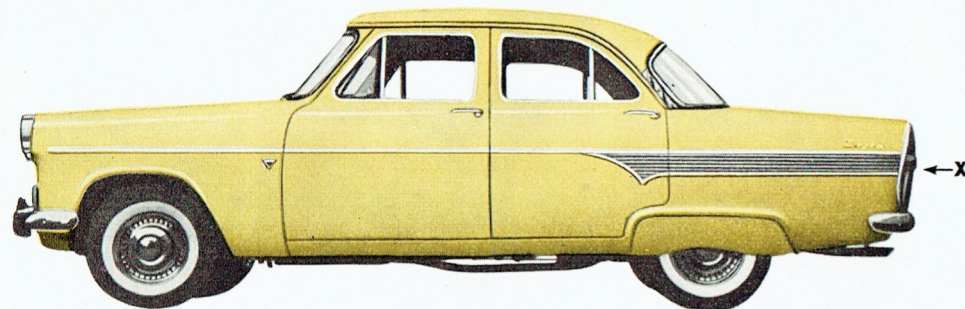
AR206E 19600 E Flashline Moulding Kit with A206E 18973 A Fender Skirts. For Zephyr or Consul Sedans 1959/-.

COMBINATION OF FASHIONLINE AND FLASHLINE DESIGNS



Illustrated is the combination of the AR206E 19600 D and AR206E 19600 E Moulding Kits. Also included in the illustration is the A206E 18973 A Fender Skirt. For Zephyr or Consul Sedans 1959/-.

RIBBED STAINLESS STEEL PANEL



AR206E 19600 F "Ribbed Stainless Steel Panel" Moulding Kit resembles the AR206E 19600 E "Flashline" design but includes a stainless steel plate in addition to the mouldings. This plate covers the full area marked (X). Fender skirt AR18973A is also shown. For Zephyr Sedan 1959/-.

COMBINATION OF FASHIONLINE AND "RIBBED STAINLESS STEEL PANEL" DESIGNS



AR206E 19600 F "Ribbed Stainless Steel Panel" Moulding Kit is here combined with the AR206E 19600 D Fashionline mouldings—the effect is one of a painted upper portion—marked (Y), and a stainless steel lower portion—marked (X). Fender skirt A206E 18973 A is also illustrated. For Zephyr Sedan 1959/-.

There are many attractive designs and combinations of Styletone Mouldings with Fender Skirts to enhance the sweeping lines of Zephyr, Consul Mark II Sedans 1959/-.

Attractively styled "Styletone" mouldings are produced for the exciting New Anglia 1960.

Styletone Mouldings are also available for Prefect 1954/- and for Zephyr and Consul Station Wagons 1959/-.

Choose from this extensive range to suit the extra "colourtone" paint combination you favour for your Ford vehicle.