



NEW

TO AUSTRALIA
BUT FROM A FAMOUS FAMILY

THE

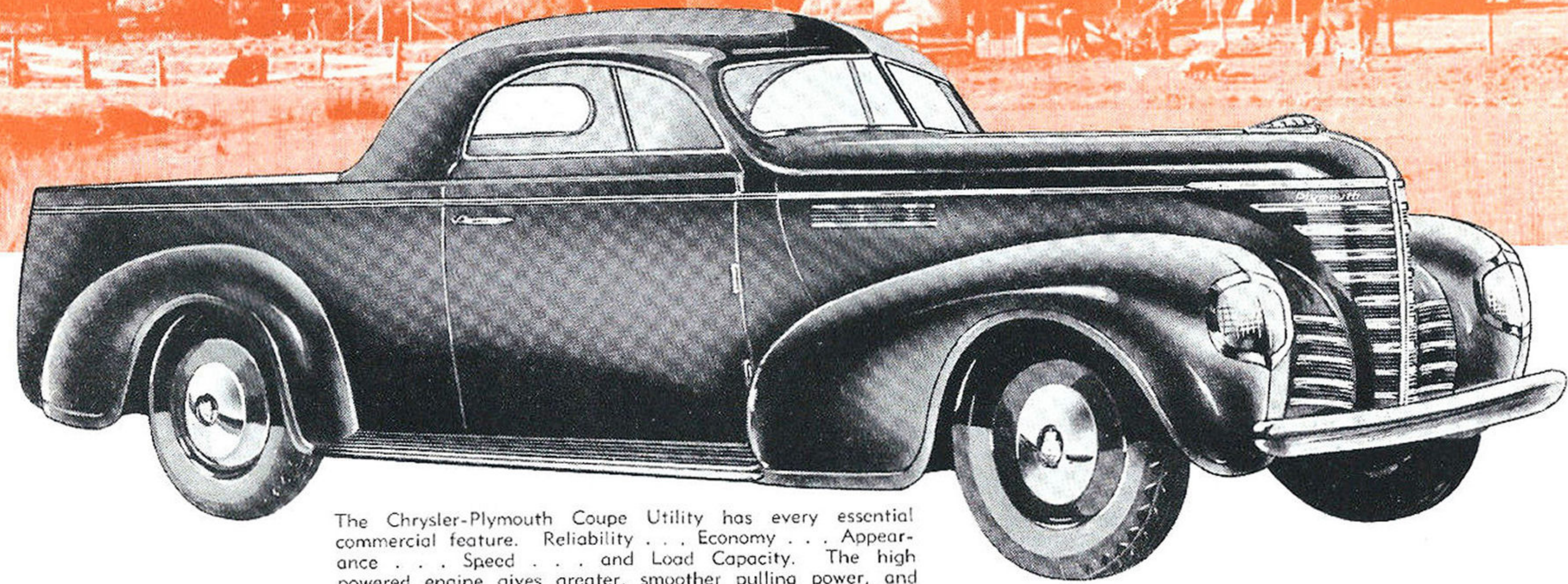
Chrysler

PLYMOUTH

COMMERCIAL

Dimensions of the Chrysler-Plymouth Coupe Utility are as follows:—

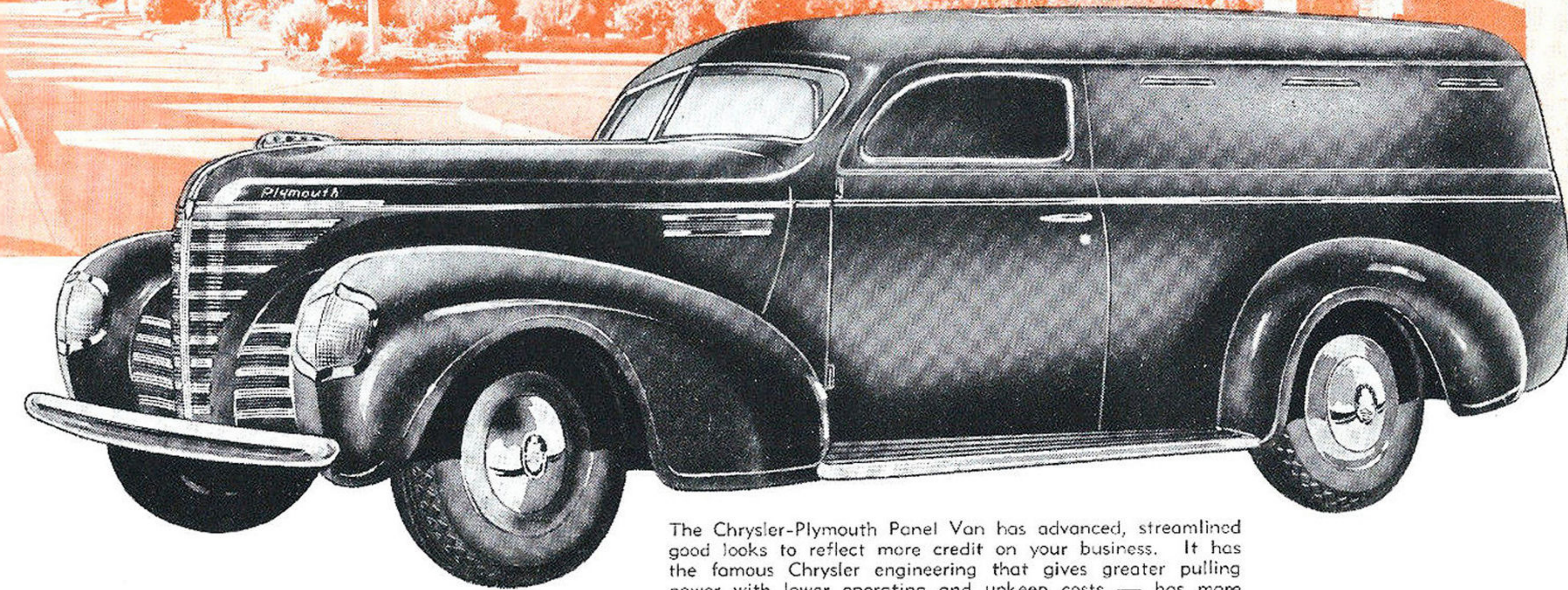
Wheel Base	114"
Length of Floor	74½"
Width of Floor	49"
Length at Top	54"
Width at Top	59"
Sides (Height)	19½"
Overall Length	191"



The Chrysler-Plymouth Coupe Utility has every essential commercial feature. Reliability . . . Economy . . . Appearance . . . Speed . . . and Load Capacity. The high powered engine gives greater, smoother pulling power, and is more economical. Underslung springs with Hotchkiss Drive give passenger car riding qualities.

Dimensions of the Chrysler-Plymouth Panel Van are as follows:—

Wheel Base	114"
Length of Floor	74½"
Width at Beltline	59"
Height Inside	43"
Double Doors Opening Width	47½"
Overall Length	191"



The Chrysler-Plymouth Panel Van has advanced, streamlined good looks to reflect more credit on your business. It has the famous Chrysler engineering that gives greater pulling power with lower operating and upkeep costs — has more room in the cab, and increased load carrying capacity.

SPECIFICATIONS AND OUTSTANDING FEATURES

CHRYSLER-PLYMOUTH 114" W.B. COMMERCIALS

ENGINE: Six-Cylinder, L-head type. Floating power mounted. Bore $3\frac{1}{8}$ ". Stroke $4\frac{3}{8}$ ". Piston Displacement 201.33 cub. in. S.A.E. Horsepower 23.44. Developed Brake Horsepower 82 at 3,600 R.P.M. Full pressure lubrication to all crankshaft, camshaft and connecting rod bearings. Crankcase ventilation. Compression ratio 6.7 to 1.

AXLE—Front: Individually sprung front wheels. Rear: Semi-floating axle with Hypoid Drive Gears. Adjustable tapered roller bearings throughout.

BRAKES: Four-wheel, equal pressure hydraulic, internal expanding, sealed against water and dirt. Independent Hand Brake operating on Propellor Shaft.

CLUTCH: Single-plate, dry, fully ventilated. $9\frac{1}{2}$ " disc. Ball Thrust release bearing. Lubricant sealed in. New over-centre Clutch Spring greatly reduces operating effort.

COOLING SYSTEM: Centrifugal Water Pump, By-pass Thermostat, full-length Water Jackets and directional cooling.

DRIVE: Hotchkiss, Rear Springs take up driving torque and thrust. Tubular Propellor Shaft $2\frac{1}{2}$ " Diameter. Two ball and trunnion-type Universal Joints with Roller Bearings.

ELECTRICAL SYSTEM: Six-volt, air-cooled Generator. Positive shift starter. Vacuum-controlled Distributor.

FRAME: Rigid double-drop X-girder trussed frame with full-length Box-Section Side Members, 6" deep.

FUEL SYSTEM: Plain tube down-draft Carburettor with idling control and adjustable accelerating pump. Automatic Manifold Heat Control. Oil-bath air-cleaner and silencer. Fuel Pump driven by eccentric on camshaft. Fuel Filter. 15-gallon Supply Tank. Fuel Gauge on Instrument Panel.

SPRINGS—Front: Independent Coil Springs. Rear: Semi-elliptic tapered leaf.

SHOCK ABSORBERS: Direct, double-acting, aero-hydraulic type.

STEERING GEAR: Worm and roller type. Adjustable tapered roller worm thrust bearings.

TRANSMISSION: Synchro-silent transmission with Helical gears throughout.

WHEELBASE: 114 inches.

WHEELS AND TYRES: Five steel disc wheels. Five 16 x 6.00 low pressure tyres.

ALL SPECIFICATIONS SUBJECT TO CHANGE WITHOUT NOTICE AND WITHOUT RESPONSIBILITY.



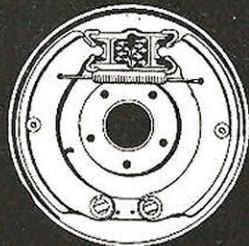
YORK MOTORS PTY. LTD.

142 PARRAMATTA ROAD, CAMPERDOWN, N.S.W.

Phone: L 3291



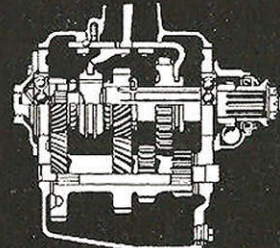
Roller bearing universal joints give greater strength and smoother operation.



Equal pressure hydraulic brakes are positive in action. Respond in direct proportion to pedal pressure.



Air cleaner on carburettor prevents dust and foreign matter from entering engine and protects engine from grit abrasion.



Synchro - mesh transmission engages gears with synchronised accuracy. Smooth, silent.



The Aero-Hydraulic Double-acting Telescopic type Shock Absorbers smooth out all road bumps.