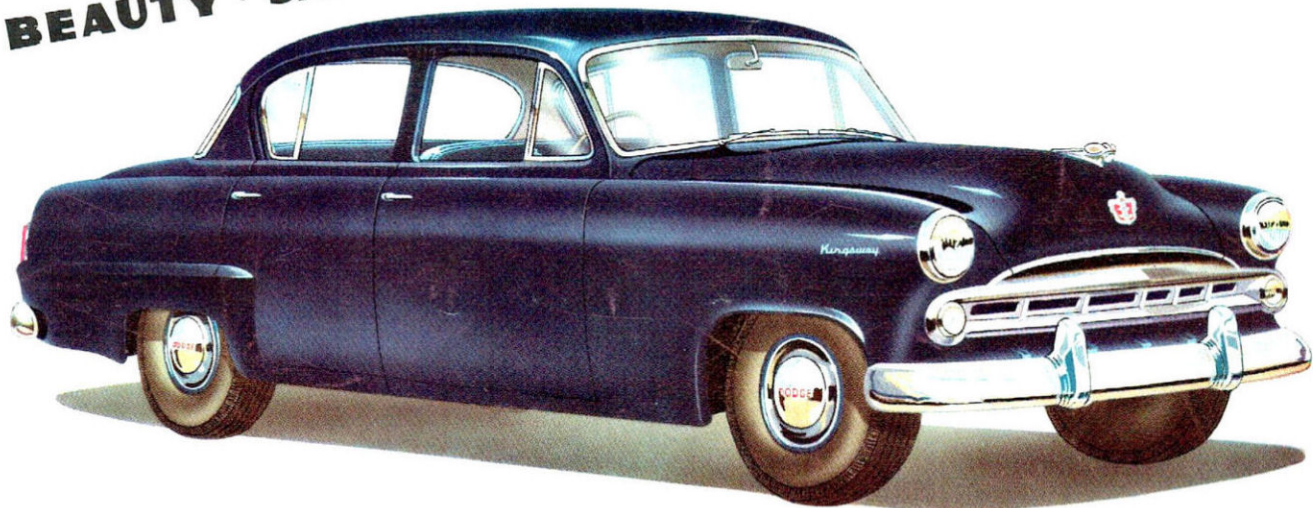
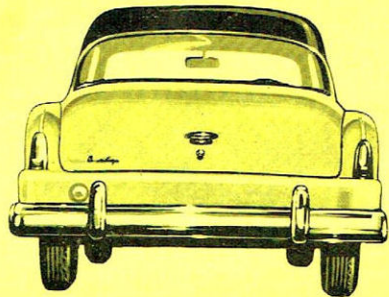


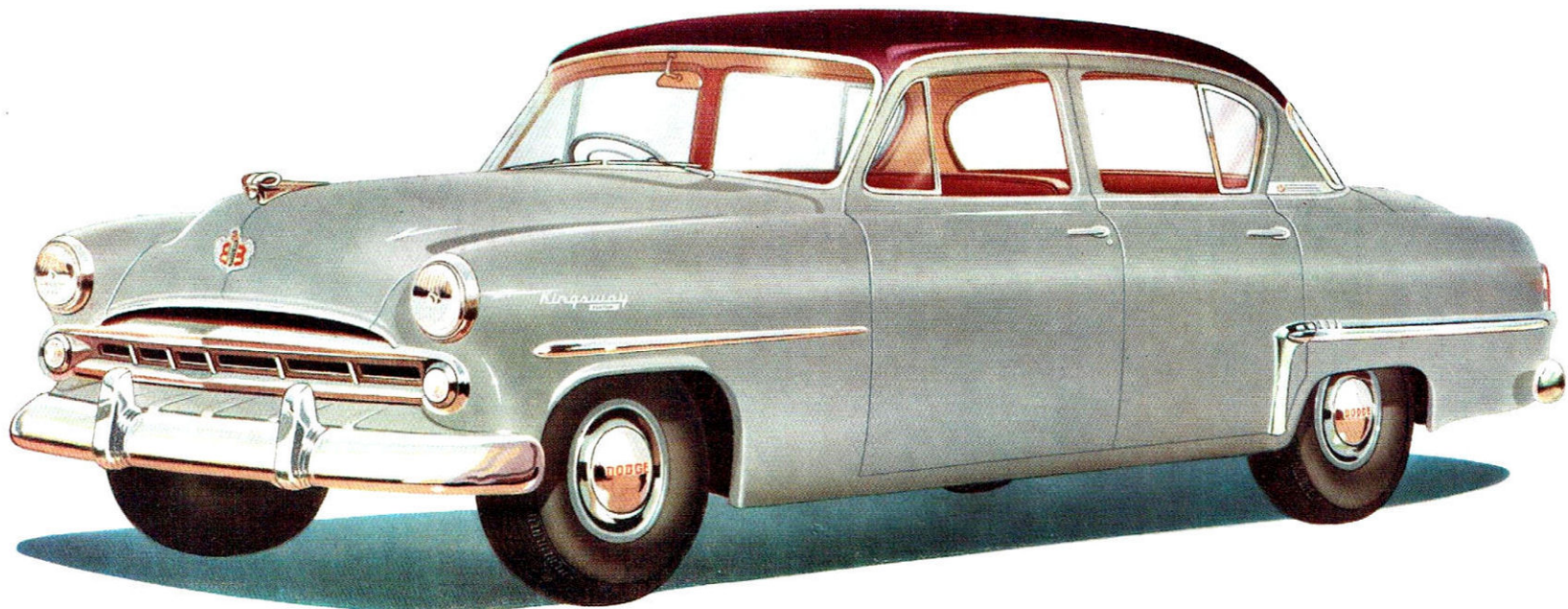
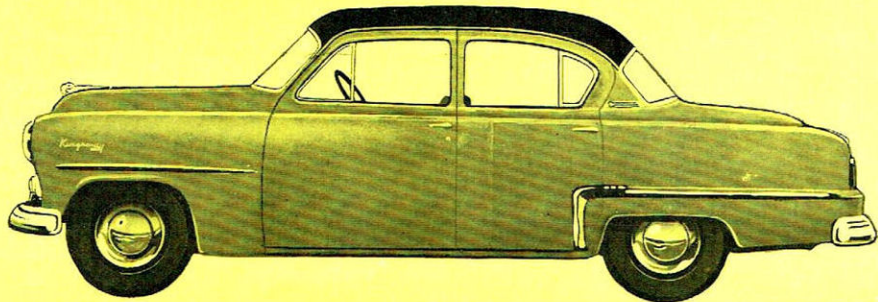
Dodge

FOR BEAUTY · SAFETY · COMFORT · DEPENDABILITY





Look at the new Dodge from any angle and you'll see smooth, new beauty. Get inside it and you'll find spacious comfort. Drive it and you'll enjoy the safety of increased vision, plus a new, road-hugging, curve-holding ride and new steering ease. In addition, you will find the **DEPENDABILITY** that has made famous the name of Dodge.



DODGE KINGSWAY CUSTOM

Dodge

SPECIFICATIONS

DIMENSIONS:

Wheelbase 114 in. Car overall length, 190 13/16 in. Overall width, 74½ in.

AXLE FRONT:

Independently sprung wheels. Reversed Elliott steering knuckle support.

AXLE REAR:

Semi-floating Amola steel axle shaft; two pinion differential and nickel molybdenum hypoid gears; one-piece forged housing for uniform strength. Fully adjustable tapered roller bearings throughout. Rear axle ratio, 3.9 to 1. Lubricant capacity, 2½ Imperial pints.

BRAKES:

Safeguard four-wheel hydraulic, self-equalising internal expanding brakes utilising an individual cylinder for each shoe in front wheel brakes; 10 in. brake drums. Lining contact area, 158 square inches. Handbrake is Tee handle turn release type with multiple pawl ratchet; operates on propeller shaft, rear of transmission; frictional area 33.5/8 square inches.

CHASSIS FRAME:

Super rigid, double channel box section frame. Side-member thickness 3/32 inches; depth 5½ inches, outside width at maximum depth 4½ inches. Drop centre type side members braced with four cross-members.

CLUTCH:

Dry, single plate, 9½ inches diameter. Force ventilated with cushion centre. Ball thrust release bearing with lubricants sealed in. Total contact area, 77.8 square inches.

ELECTRICAL SYSTEM:

Twelve-volt ignition. Full automatic vacuum controlled distributor. 22-amp. belt driven generator, with full voltage and current control. Ignition-key operated positive starter. Lucas pre-focus headlamps with foot operated dipper control, dual tail lamps, front parking lights. Stop-light and licence lamp. 9 plate MoPar battery.

COOLING SYSTEM:

Centrifugal water pump. Uniform directional circulation. Thermostat control. Full length water jacket. Water distributing tube cools all valve seats with direct water flow. Six-blade 17in. fan. Water capacity, three Imperial gallons.

CRANKSHAFT:

Precision high duty with four removable bearings. Seven counterweights.

CAMSHAFT:

Cast iron four-bearing, with silent chain drive.

FUEL SYSTEM

Ball and Ball plain tube down-draft carburettor with idle control and adjustable accelerating pump. Automatic manifold heat control. Heavy duty oil bath air cleaner. Automatic electric choke. Electric fuel gauge on instrument panel. 14 Imperial gallon fuel tank with self-cleaning sintered bronze fuel filter.

DRIVE:

Hotchkiss type. Tubular propeller shaft balanced statically and dynamically to reduce vibration. Universal joints, ball and trunnion type with straight roller bearings.

ENGINE:

High torque, six-cylinder "L" head type. Floating power mountings. Bore 3.3/8"; stroke 4½". Piston displacement, 228.12 cub. inches. Rated horsepower, 27.34. Maximum b.h.p., 101 at 3,600 r.p.m. Maximum torque, 179 lbs. ft. at 1,400 r.p.m. Compression ratio, 6.13:1. Full pressure lubrication to all crankshaft, camshaft and connecting rod bearings. Crankcase oil capacity, four quarts (Imperial). Full crankcase ventilation. Filtered oil system. Aluminium alloy tin plated pistons with two comp. and two oil rings.

SUSPENSION:

(a) **Springs:** Front—Silico manganese steel independent coil springs, wishbone type action. Rear—Non-parallel-longitudinal leaf type; semi-elliptic; length, 53.3/8 inches, width, 2 inches, silico manganese steel, with moulded interliners.

(b) **Shock Absorbers:** Direct double acting hydraulic, front and rear telescopic "Oriflow" type. Rears in "Sealeg" position for greater stability.

STEERING:

Rubber cushioned shockless worm and roller type. Adjustable tapered roller worm thrust bearings. Steering gear ratio, 18.2:1. Wheel diameter, 17½ inches. Full circle horn ring and remote control gearshift lever.

TRANSMISSION:

Synchro-silent transmission, with helical gears throughout. Three forward speeds and reverse. Lubricant capacity, 2-1/3 pints (Imperial).

WHEELS AND TYRES:

Five demountable steel disc wheels with safety rims; 6.70 x 15, 4 ply, low pressure tyres. Spare wheel and tyre mounted on righthand side of luggage compartment. Inflation pressure 24-lb. (cold). Optional equipment 16 x 4.50 wheels with 6.50 x 16 4-ply tyres.

THE BODY:

All steel body, designed, reinforced, and dust-sealed for Australian road conditions. Heat treated safety glass all windows; wrap-round bumpers.

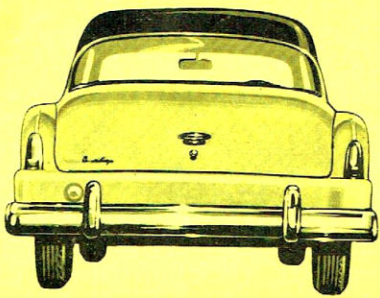
EQUIPMENT AS DELIVERED:

Custom.—Pre-focus headlamps. Heavy duty bumpers with buffer plates. Dual horns. 9-plate battery. Cigar lighter. Mechanical bumper jack. Sway eliminator. Oil filter. Intake silencer on air cleaner. Full tool kit with tyre pump. Dual tail lights. Remote control horn ring. 17½-inch steering wheel. Courtesy light. Rear seat arm-rest. Dual electric windshield wipers. Stainless steel windshield and rear light finish mouldings. Dual sun visors. Cowl ventilator. Stainless steel rear fender stone shields. Jack holding bracket in luggage compartment.

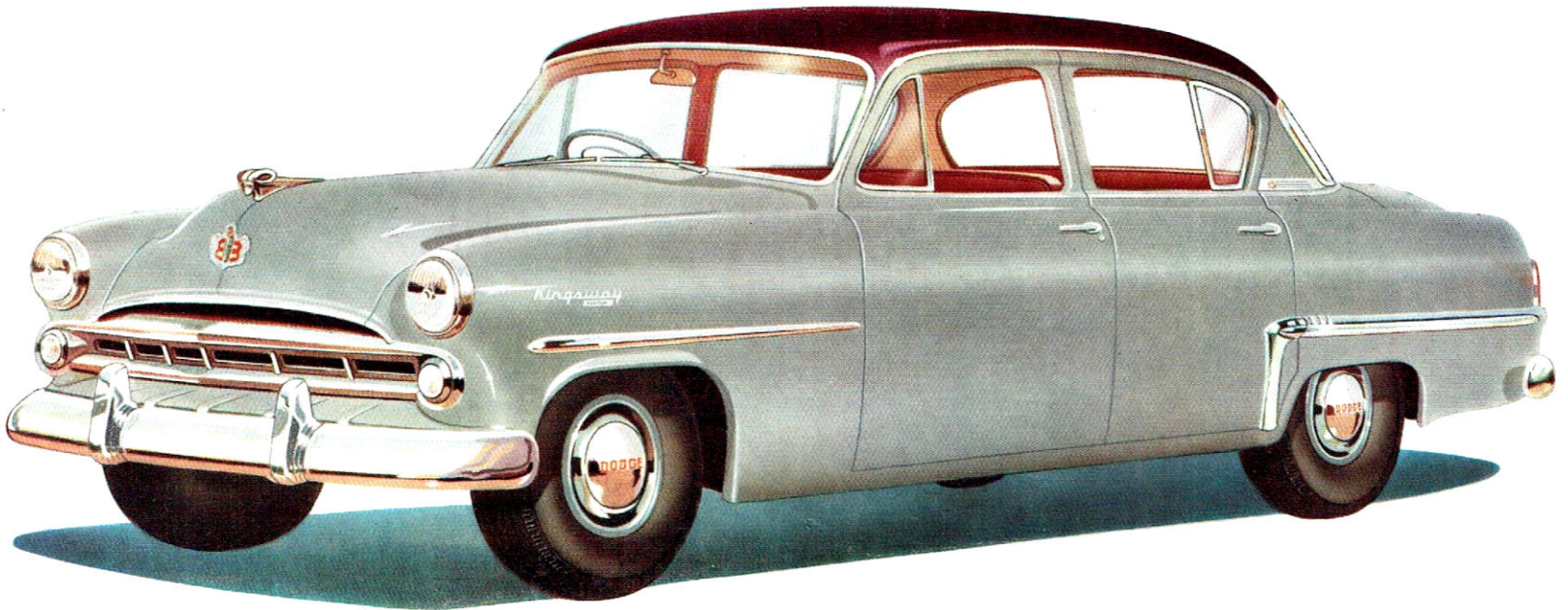
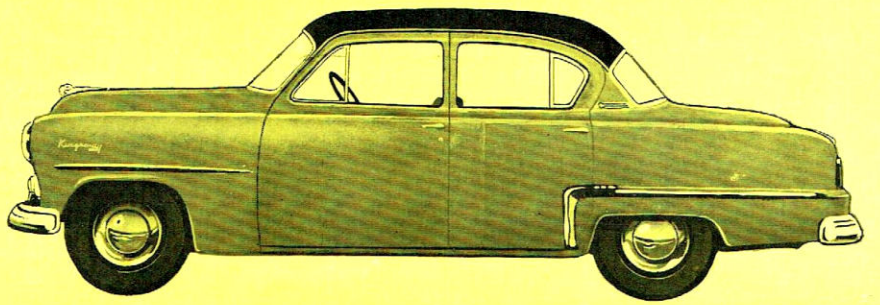
DeLuxe.—Pre-focus headlamps. Heavy duty bumpers. Single low note horn. 9-plate battery. Mechanical bumper jack. Sway eliminator. Tool kit with essential tools. Dual tail lights. Remote control horn ring. 17½ inch steering wheel. Dual electric windshield wipers. Sun visor. Cowl ventilator.

Product of:
CHRYSLER AUSTRALIA LIMITED
ADELAIDE — SOUTH AUSTRALIA





Look at the new Dodge from any angle and you'll see smooth, new beauty. Get inside it and you'll find spacious comfort. Drive it and you'll enjoy the safety of increased vision, plus a new, road-hugging, curve-holding ride and new steering ease. In addition, you will find the **DEPENDABILITY** that has made famous the name of Dodge.



DODGE KINGSWAY CUSTOM



Product of:
CHRYSLER AUSTRALIA LIMITED
ADELAIDE — SOUTH AUSTRALIA

STEERING: Rubber cushioned shockless worm and roller type. Adjustable tapered roller worm thrust bearings. Steering gear ratio, 18.2:1. Wheel diameter, 17½ inches. Full circle horn ring and remote control gearshift lever.

TRANSMISSION: Synchromesh transmission, with helical gears throughout. Three forward speeds and reverse. Lubricant capacity, 2-1/3 pints (Imperial).

WHEELS AND TIRES: Five demountable steel disc wheels with safety rims, 6.70 x 15, 4 ply, low pressure tires. Spare wheel and tire mounted on right-hand side of luggage compartment. Inflation pressure 24-lb. (cold). Optional equipment 16 x 4.50 wheels with 6.50 x 16 4-ply tires.

THE BODY: All steel body, designed, reinforced, and dust-sealed for Australian road conditions. Heat treated and safety glass all windows; wrap-around bumpers.

EQUIPMENT AS DELIVERED: Custom—Pre-focus headlamps. Heavy duty bumper. Cigar battery. 9-plate battery. Oil filter. Mechanical bumper jack. Sway eliminator. Oil filter. Intake silencer on air cleaner. Full tool kit with tyre pump. Dual tail lights. Remote control horn ring. 17½-inch steering wheel. Courtesy light. Rear seat arm-rest. Dual electric windshield wipers. Stainless steel windshield and rear light finish mouldings. Dual sun visors. Cowl ventilator. Stainless steel rear fender stone shields. Jack holding bracket in luggage compartment. Deluxe—Pre-focus headlamps. Heavy duty bumpers. Single low noise horn. 9-plate battery. Mechanical bumper jack. Sway eliminator. Tool kit with essential tools. Dual tail lights. Remote control horn ring. 17½ inch steering wheel. Dual electric windshield wipers. Sun visor. Cowl ventilator.

ELECTRICAL SYSTEM: Twelve-volt ignition. Full automatic vacuum controlled distributor. 22-amp. belt driven generator, with full voltage and current control. Ignition-key operated positive stator. Lucas pre-focus headlamps with foot operated dipper control, dual tail lamps, front parking lights. Stop light and licence lamp. 9 plate Mopar battery.

COOLING SYSTEM: Centrifugal water pump. Uniform directional circulation. Thermostat control. Full length water jacket. Water distributor. Six-blade 17-in. fan. Water capacity, three Imperial gallons.

CRANKSHAFT: Precision high duty with four removable bearings. Seven counterweights.

CAMSHAFT: Cast iron four-bearing, with silent chain drive.

FUEL SYSTEM: Ball and ball plain tube down-draft carburettor with idle control and adjustable accelerating pump. Automatic manifold heat control. Heavy duty oil bath air cleaner. Automatic electric choke. Electric fuel gauge on instrument panel. 14 Imperial gallon fuel tank with self-cleaning sintered bronze fuel filter.

DRIVE: Horchiks type. Tubular propeller shaft balanced statically and dynamically to reduce vibration. Universal joints, ball and trunion type with straight roller bearings.

ENGINE: High torque, six-cylinder "L" head type. Floating power mounts. Bore 3.3/8", stroke 4½". Piston displacement, 228.12 cub. inches. Rated horsepower, 27.34. Maximum b.h.p., 101 at 3,600 r.p.m. Maximum torque, 179 lbs. ft. at 1,400 r.p.m. Compression ratio, 6.13:1. Full pressure lubrication to all crankshaft, camshaft and connecting rod bearings. Crankcase oil capacity, four quarts (Imperial). Full crankcase ventilation. Filtered oil system. Aluminium alloy tin plated pistons with two comp. and two oil rings.

SUSPENSION: (a) Springs: Front—Silico manganese steel independent coil springs, wishbone type action. Rear—Non-parallel longitudinal leaf type; semi-elliptic length, 53.9/8 inches, width, 2 inches, silico manganese steel, with moulded intertens.

(b) Shock Absorbers: Direct double acting hydraulic, front and rear telescopic "Oriflow" type. Rears in "Sealing" position for greater stability.

CLUTCH: Dry, single plate, 9½ inches diameter. Force ventilated with cushion centre. Ball thrust release bearing with lubricants sealed in. Total contact area, 77.8 square inches.

CHASSIS FRAME: Super rigid, double channel box section frame. Side member thickness 3/32 inches; depth 5½ inches, outside width at maximum depth 4½ inches. Drop centre type side members braced with four cross-members.

BRAKES: Safeguard four-wheel hydraulic, self-equalising internal expanding brakes utilizing an individual cylinder for each shoe in front wheel brakes; 10 in. brake drums. Lining contact area, 158 square inches. Handbrake is Tee handle turn release type with multiple pawl ratchet; operates on propeller shaft; rear of transmission; frictional area 33.5/8 square inches.

AXLE REAR: Semi-floating Amola steel axle shaft; two pinion differential and nickel molybdenum hypoid gears; one-piece forged housing for uniform strength. Fully adjustable tapered roller bearings throughout. Rear axle ratio, 3.9 to 1. Lubricant capacity, 2½ Imperial pints.

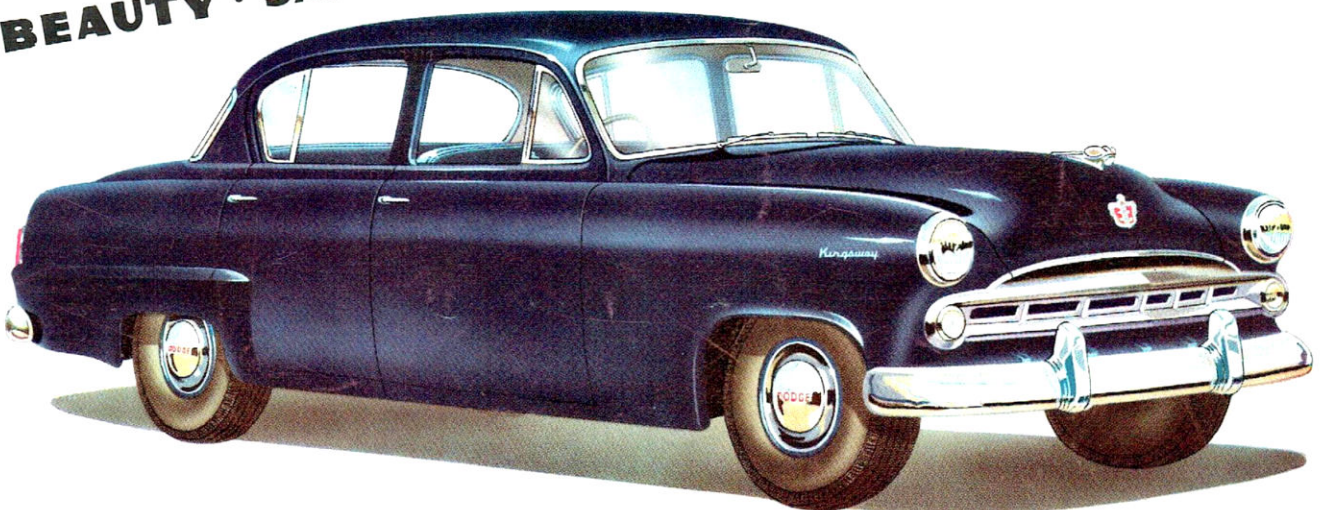
AXLE FRONT: Independently sprung wheels. Reversed Elliott steering knuckle support.

DIMENSIONS: Wheelbase 114 in. Car overall length, 190 13/16 in. Overall width, 74½ in.

Dodge SPECIFICATIONS

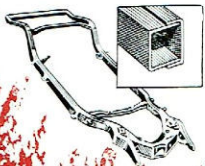
Dodge

FOR BEAUTY · SAFETY · COMFORT · DEPENDABILITY

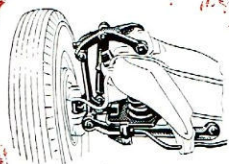


DODGE KINGSWAY DELUXE

Dodge for New Riding Comfort!



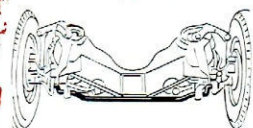
BOX TYPE FRAME, wider and lower with box type side rails permitting stiffer, shorter body mounting brackets giving greater rigidity to frame and body.



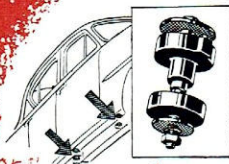
COIL FRONT SPRINGS allow either front wheel independently to "step-over" the roughest bump with minimum impact. Springs are of tough alloy steel.



HOTCHKISS DRIVE lets the rear springs absorb the shocks of sudden starts and stops, giving a smoother ride and saving wear on axle-line parts.



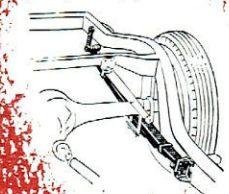
SWAY ELIMINATOR BAR helps keep the car from leaning on curves, the bar pushes up on the side towards which the car is leaning and pushes down on the other.



RUBBER BODY MOUNTINGS prevent metal to metal contact, resulting in a quieter ride. This is typical of the attention to detail in Dodge design.



ORIFLOW SHOCK ABSORBERS automatically adjust their action according to the road shock. They gently restrain slow movements, offer greater resistance to rapid movements.



LONG REAR LEAF SPRINGS are wider, more flexible for better cushioning and are angle-mounted for greater stability.



SHOCK PROOF STEERING and more comfortable driving is achieved by rubber pads which cushion the steering column.



Dodge Dependability is protected by specialised service and MoPar genuine Chrysler-engineered parts that are Made Right, Fit Right, Work Right, Priced Right.

The centre of gravity has been lowered, the frame is wider and new wider rear springs are angle-mounted to resist roll. The beautiful balance built into this car gives you road-hugging stability always.

Wide springs have more up and down room to react in. Rear axle is set further forward on the springs so that the wheels stay firmly on the road, allowing full spring action. And with this is a brand new type of shock-absorber—the Oriflow.

In Dodge, the masses of weight are placed where they will resist any pitching motion of the car.

New weight distribution combines with synchronised springs. Rear springs are synchronised to react a split second faster than the front ones so they catch up with the rebound of the front springs and keep the ride level. You get a gliding, not a galloping, motion in Dodge.



Dodge stays level and steers true on the sharpest curves.



New protection against the bump and bounce of road shocks.



New control of pitching when you ride over rough roads.

Dodge for Practical Beauty!

The practical principle that underlies the styling of Dodge is the combining of a graceful mechanism in a form determined by function. The designers consider the passengers' needs—the space for sitting, the depth of seats, the clearance between head and roof. All this is function, the graceful outer form then follows.

Result is that here is a car with a "road-hugging" look, but inside, there are chair-high seats that let you sit up naturally—doors opening high and wide so you can easily get in or out—head room, leg room, elbow room to spare, everywhere.

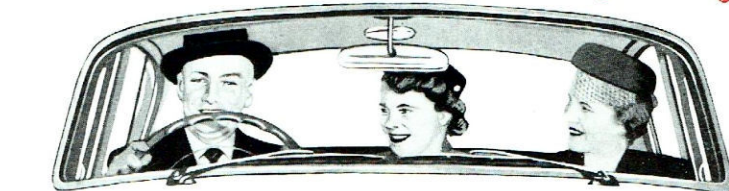
The impressive new, wrap-around rear window assures driver and passenger exceptional visibility from any angle. With the new, rear quarter windows, rear seat passengers have almost "front-seat" vision, which adds to the enjoyment of motoring.

Beauty and function combine even in the design of the rear fenders. The sweep-through styling with the rub-rail contour gives extra protection, extra strength.



New design of the rear door allows passengers to enter or leave the rear compartment with maximum convenience. The upper door frame is curved gracefully into the quarter panel.

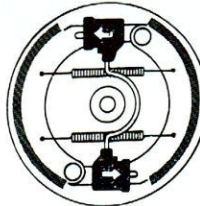
Dodge for Safety!



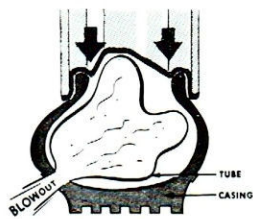
BEAUTY AND VISIBILITY. Note how much glass area there is in Dodge—a panoramic windshield, wide, deep windows in sides and rear. You command a clear view of the road, you sit upright and you are comfortable—and these are the three essentials for safe driving. But these are only the beginnings of Dodge safety. Below we follow through with the details of other features which mean safer, surer motoring for you and yours.



SAFEGUARD HYDRAULIC BRAKES. Dodge has an extra hydraulic braking cylinder in each front wheel—where extra control is needed most. The parking brake operates independently at rear of transmission.



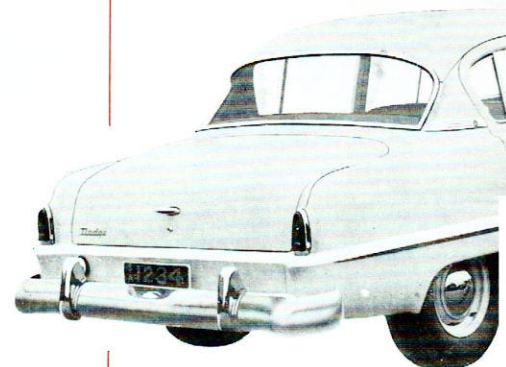
ALL STEEL BODY AND FRAME gives safety where you need it. Each frame side member consists of two channel members overlapped to form a unit of tremendous strength.



SAFETY RIM WHEELS. If a blow-out occurs you can bring your Dodge to a straight-line stop. The secret is in those little humps which hold the tyre in place and don't allow it to roll off.



Dodge seating design gives correct posture—comfort, puts driver and passengers in a natural sitting position.



Beauty, safety and function combine in the rear-end design. Note the wide rear window, rear deck lid, presenting perfect style harmony with the low, wide, hood line.

