

LEXUS LC & LC CONVERTIBLE

2022





WELCOME TO LEXUS

Thank you for your interest in Lexus. You've taken the first step into a world of thoughtfully engineered products, precision craftsmanship and unrivalled Guest care. Welcome to a luxury experience where we strive to treat you like a "Guest in our home."

Life can be full of pressures, yet also full of moments to capture and enjoy. At Lexus, we want to give you the freedom to chase and experience those moments. That's why we dedicate the time toward every vehicle and every service – so you can make the most of yours.

We know time is the ultimate luxury and our brand promise is to focus our efforts on delivering vehicles, technologies and guest services that allow you to enjoy those special moments in life.

I invite you to explore our 2022 model selection. Whether it's one of our luxury SUVs, a breathtaking coupe or a nimble performance sedan, I know there is a Lexus waiting to help you enjoy the drive and make time for amazing.

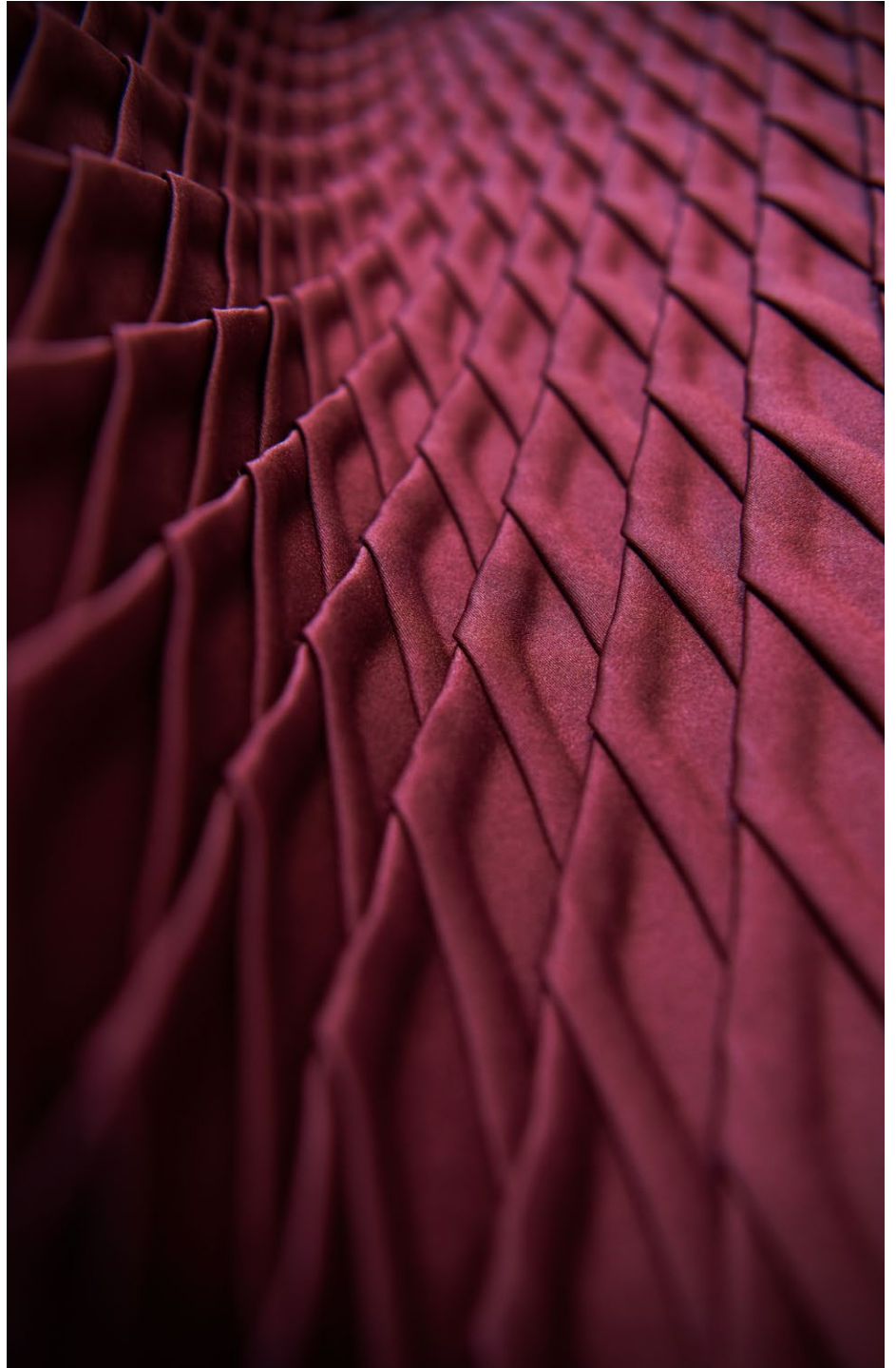
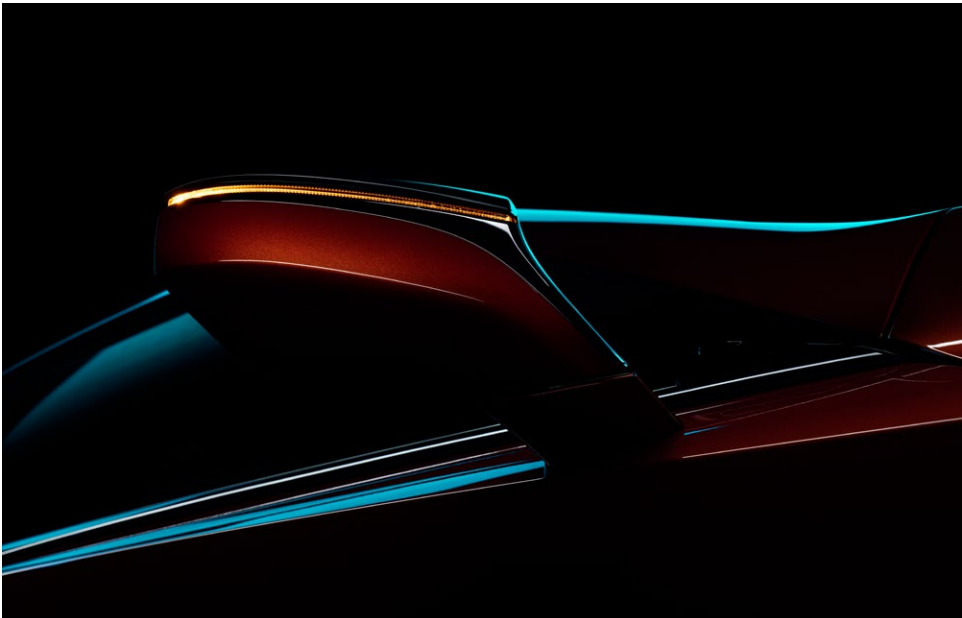
A handwritten signature in black ink that reads "M. Gilbert". The signature is fluid and cursive, with a prominent "M" and a stylized "G".

Martin Gilbert
Director of Lexus Canada

EXPERIENCE SOMETHING GREATER

From the start, Lexus has redefined luxury. The Japanese principle of Omotenashi brings unrivalled Guest hospitality, with a dedication to treating everyone with warmth, care and respect as if they were a Guest in our home. Its cutting-edge design and exceptional attention to detail shows the meticulous craftsmanship of legendary Lexus Takumi Masters. Lexus looks forward to realizing a brighter, cleaner future thanks to its innovative electrified vehicle offerings, which encapsulate the “Lexus Electrified” vision. Along with pioneering innovations, impassioned styling and a thirst for enhancing every drive, it’s a luxury experience unlike any other.







MAKE A LONG IMPRESSION IN A SHORT AMOUNT OF TIME

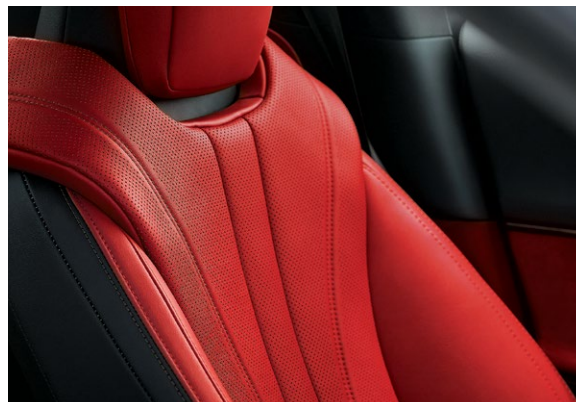
The real measure of exhilarating performance runs much deeper than a list of impressive statistics. At Lexus, we believe exhilaration is defined by a sense of confidence paired with an undeniable rush of adrenaline. It's about feeling completely connected to the driving experience, and the feeling must be nothing short of amazing.





A SYMPHONY OF BEAUTIFUL SURROUNDINGS

Guided by our L-finesse design philosophy, the LC's low stance and near-perfect 50/50 weight distribution reduces body-roll in corners. Coupled with an Alcantara-wrapped, driver-focused interior, and unique 20-inch forged aluminum wheels that are definitive of Lexus style. The list goes on for a flagship performance coupe.





CUSTOMIZE TO YOUR TASTE

The Lexus LC 500 Bespoke Build allows you to customize your vehicle according to your own unique sense of style. Choose how you make your first impression by selecting an exterior colour. Next, show off your vehicle's power with your choice of 20-inch Cast, 21-inch forged or even more stylish forged Inspiration Edition 5 wheels. Select carbon fibre or glass roof. The exterior look is finished off with an active rear wing, carbon fibre rear wing or no spoiler at all. For the vehicle's interior, choose either Sport or Comfort seats, and add the final touch with your choice of interior colour. The result is an LC 500 that is unique to you.



BORN TO PERFORM

Powered by a naturally aspirated, 471 HP,¹ 5.0 L V8 engine with a 10-speed, direct-shift automatic transmission, the LC 500 is capable

of sprinting from 0 to 100 km in 4.4 seconds. When it comes to creating awe, there can be no compromise.

	POWER¹	ENGINE	FUEL RATING¹ (L/100 km) (City/Hwy)	SEATS	AIRBAG²
LC 500	471 HP	5.0 L, V8	16.0/9.6	4	8
LC 500h	354 Net HP	Multi-Stage Hybrid	9.0/7.1	4	8



EXHILARATION IS IN THE AIR

The LC 500 and 500h Convertible is strikingly designed from the top, down. With breathtaking style and unmatched refinement comes equally exhilarating performance. Active Noise Control keeps unwanted noise out, while exclusive intake and exhaust tuning results in an engine that

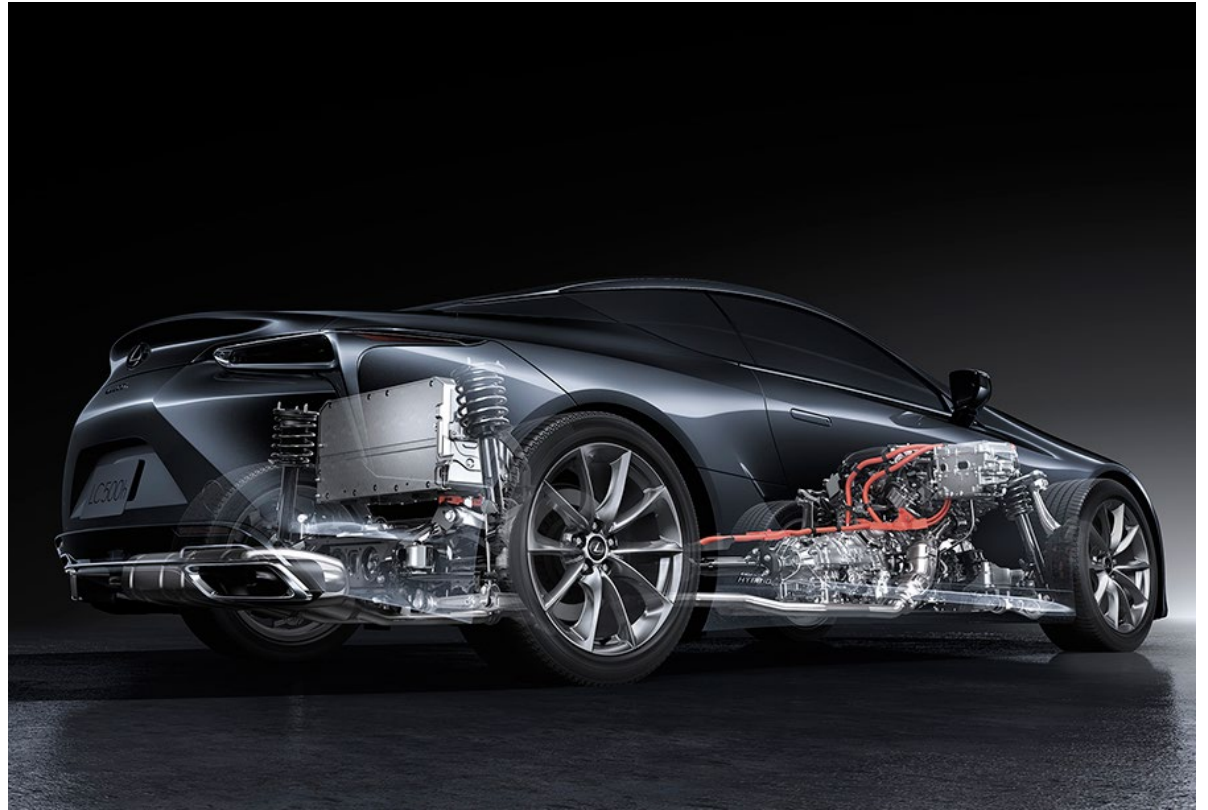
sounds as good as it drives. The soft-top has been designed to open in 15 seconds while driving at speeds up to 50 km/h. Climate Concierge supports comfortable top down driving through varying temperatures, extending the convertible driving season in Canada.

	POWER¹	ENGINE	FUEL RATING¹ (L/100 km) (City/Hwy)	SEATS	AIRBAG²
LC Convertible	471HP	5.0L, V8	16.0/9.6	4	8

SELF-CHARGING HYBRID ELECTRIC

Always pushing the boundaries of not only what can be done, but what should be done, Lexus is the leader in hybrid technology development. Our Self-Charging Hybrid Electric technology provides enhanced powertrains that pair impressive fuel efficiency with cleaner emissions, so you never compromise on performance, or an enjoyable driving experience.¹ The Multi-stage Hybrid system found in the LC 500h is our most advanced system yet, granting even more power and efficiency. It features instantaneous torque, 354 HP and the direct driving feel of a multi stage transmission with M-Mode.

Visit Lexus.ca/Hybrid to learn more about Lexus Self-Charging Hybrid Electric technology.





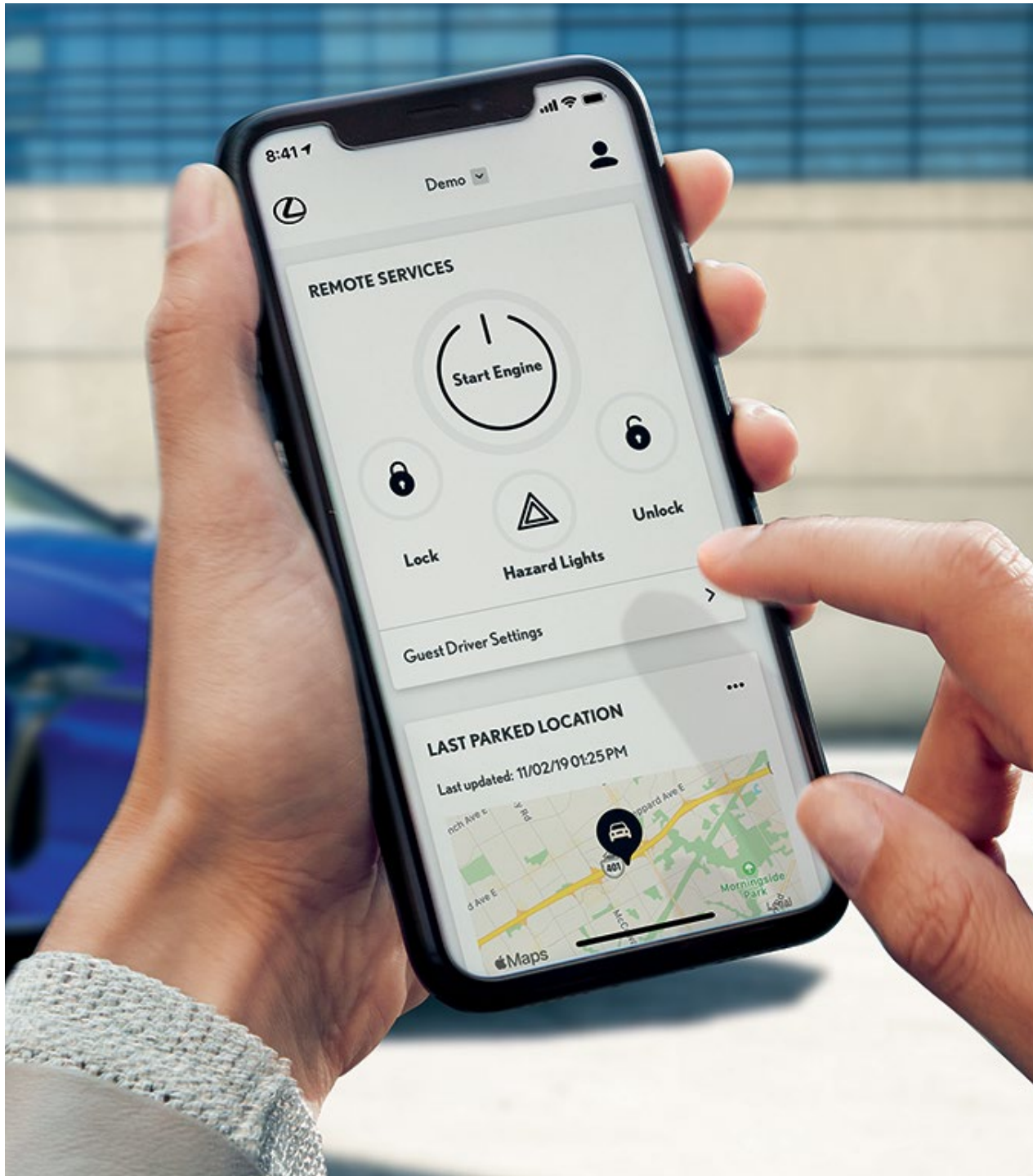
TECHNOLOGY

LEXUS ENFORM

Lexus Enform offers progressive technology to make every journey richer. Discover where to go with available Destination Assist and access a live Response Agent 24/7 who can find the location you're looking for and send the route to your Lexus Navigation system.

For added confidence, Enform-equipped Lexus vehicles feature Safety Connect, so that Response Agents can assist you in the event of a collision or even help locate your vehicle should it be stolen.³ For added convenience, your vehicle's multimedia display is compatible with Apple CarPlay™ and Android Auto.™³

Visit Lexus.ca/Enform to view vehicle compatibility and more information regarding complimentary trial terms.



LEXUS APP

With the Lexus App, the opportunities to stay connected to your vehicle are more plentiful than ever. On 2022 Lexus models, use Remote Connect to monitor your vehicle's status, even when it's out of sight. Conveniently start or unlock your vehicle from your smartphone, Amazon Alexa,TM Google Assistant devices and/or select smartwatches. Set guest parameters for occasional drivers, such as valets or family members, and receive a notification if a boundary is crossed. Plus, with Service Connect, convenient vehicle health reports with information about your Lexus' maintenance needs are sent right to your Lexus App, so you can always stay informed.³

Visit Lexus.ca/Enform to view vehicle compatibility and more information around complimentary trial terms.

LEXUS SAFETY SYSTEM+²

Lexus Safety System+ is a comprehensive suite of advanced technologies and intelligent sensors that help keep you protected and create a more confident driving experience to focus on the road ahead.²

LSS+²:

- Pre-Collision System with Daytime Pedestrian Detection
- Lane Departure Alert
- Automatic High Beam
- Dynamic Radar Cruise Control

Visit Lexus.ca/Safety to learn more about LSS+.



EXTERIOR COLOURS



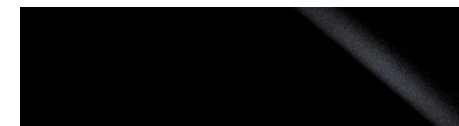
ULTRA WHITE (*F SPORT*)



SMOKY GRANITE MICA



ATOMIC SILVER



CAVIAR



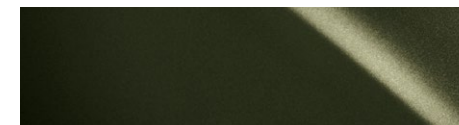
INFRARED



NIGHTFALL MICA



FLARE YELLOW



NORI GREEN PEARL



CADIUM ORANGE

INTERIOR COLOURS



BLACK



CIRCUIT RED



TOASTED CARAMEL



MANHATTANHENGE

WARRANTY INFORMATION

SERVICE COMMITMENT

On top of enjoying the highest quality product, Lexus also delivers through a professional Dealer network, a unique and uncompromising level of after-sales service and First Class Service Concept. The highest level of professionalism and vehicle support ensure that Lexus ownership experience is as luxurious as the vehicles.

WARRANTY

Our Lexus Warranty Comprehensive Coverage includes:
48 months/80,000 km.

SERVICE REPLACEMENT PARTS WARRANTY

24 months/40,000 km:

Applicable to Lexus Genuine Parts installed by a Lexus Dealer on a Lexus vehicle or purchased over the counter.

HYBRID-RELATED COMPONENTS

96 months/160,000 km (Applies to battery control module, hybrid vehicle control module, hybrid battery and the inverter/converter.)

2022 Model Year HV Battery coverage has been extended to 10 years or 240,000 km.

POWERTRAIN

72 months/110,000 km.

CORROSION PERFORATION

72 months/unlimited kilometres.

MAJOR EMISSION CONTROL COMPONENTS

96 months/130,000 km

Please see your Lexus Dealer for details. Lexus will even provide five days of alternate transportation if your vehicle is required to stay at the dealership for an extended period of time due to a warrantable condition.

EXTRA CARE PROTECTION

Extend beyond the new vehicle warranty and enhance your peace of mind with Lexus Extra Care Protection.

ROADSIDE ASSISTANCE

As a proud owner of a Lexus vehicle, you won't have to worry about obtaining assistance when mishaps requiring Emergency Roadside Service or Mechanical Breakdown Towing are needed. Throughout Canada and the continental U.S., our Central Emergency Roadside Services Operator will always be there to ensure you receive prompt, efficient services from one of the many facilities qualified under our approved Roadside Assistance Program. Twenty-four hours a day, 365 days a year, we will be there to help.

LEXUS FINANCIAL SERVICES

Come talk to the experts whose exclusive business is financing and leasing Lexus vehicles. You'll find our interest rates fully competitive and our terms flexible - up to 72 months. Our online services conveniently allow you to confirm current rates and receive your credit approval in advance of selecting the Lexus that's right for you. For help, visit your Lexus Dealer or lexus.ca, or call 1-800-26-LEXUS.

LEXUS CANADA

Every effort has been made to ensure the specifications and equipment shown are accurate based on information available at time of printing. In some cases, certain changes in standard equipment, options or product delays may occur, which are not reflected in this brochure. Lexus Canada reserves the right to make these changes without notice or obligation. Some of the photography in this brochure features U.S. or overseas models, shown with optional equipment that may not be available in Canada. Your Lexus Dealer is the best source for up-to-date information.

Lexus.ca
1-800-26-LEXUS

To sign up for information on Lexus, go to experience.lexus.ca
Lexus Canada
One Toyota Place,
Toronto, Ontario
M1H 1H9

*Vehicles in this brochure shown with optional equipment. Some features mentioned and/or shown in this brochure may only be available as part of an optional package. Under very cold conditions, the operation of some vehicle electronic systems using liquid crystal technology (such as CD, DVD, NAV and Audio displays) may be adversely affected until a warmer interior vehicle temperature is reached. Lexus reminds you to place small children in CSA-approved car seats - in the rear seats, to always wear your seatbelts, and to drive safely. **1. Horsepower/Performance:** Ratings achieved using the required premium unleaded gasoline with an octane rating of 91 or higher. The Lexus Hybrids have nearly 70% fewer smog-forming emissions compared against similarly equipped conventional gasoline power vehicles. Based on North American sales data and Federal Tier 2 engine emission requirements. **Fuel Rating:** Estimates determined using approved Government of Canada Test Methods. Actual fuel consumption will vary based on driving habits and other factors. Refer to the Government of Canada Fuel Consumption Guide for further information. **2. For all safety features,** System effectiveness depends on many factors. Please see your Owner's Manual for further information and a complete list of limitations and directions. **Lane Departure Alert** is designed to read the lane markers of certain roads. If the vehicle approaches the outer limits of its lane, the system warns the driver that corrective action may be required. It is not a collision-avoidance system and is not a substitute for safe and attentive driving. **Lane Trace Assist** is designed to read the lane markers of certain roads. If the vehicle approaches the outer limits of its lane, the system warns the driver that corrective action may be required. It is not a collision-avoidance system and is not a substitute for safe and attentive driving. Do not rely exclusively on the **Rear Cross-Traffic Alert System**. There are limitations to the function, detection and range of the system. You should also look around outside your vehicle, over your shoulder and use your mirrors to confirm rearward clearance. Do not rely exclusively on the **Blind Spot Monitor System** to determine if a lane change is safe. Always look over your shoulder and use your turn signal before changing lanes. There are severe limits to the function, detection range and clarity of the monitor system. **Dynamic/Radar Cruise Control** was designed to assist the driver and is not a substitute for safe and attentive driving. **The Pre-collision System** is designed to help reduce the crash speed and damage in certain frontal collisions only. It is not a collision avoidance system and is not a substitute for safe and attentive driving. System effectiveness depends on many factors, such as speed, driver input and road conditions. **Automatic High Beam** feature can help improve vision at night. However, conditions such as a dirty windshield, rapidly changing light conditions or hilly terrain will limit effectiveness so the driver may need to manually adjust the high beams from on to off. **Brake Assist** is designed to help the driver take full advantage of the benefits of ABS. It is not a substitute for safe and attentive driving. Braking effectiveness also depends on proper brake-system maintenance and tire and road conditions. All the **airbag ("AB") systems are Supplemental Restraint Systems**. All ABs (if installed) are designed to inflate only under certain conditions and in certain types of severe collisions: frontal and knee ABs typically inflate in frontal collisions; side and side curtain ABs in side collisions; Roll-Sensing Curtain ABs at a severe tilt degree, roll or lateral G-force.[CN1] **3. The Navigation System** is designed to assist in locating an address or point of interest. Discrepancies may be encountered between the system and your actual location. Road system changes may affect the accuracy of the information provided. Rely on your common sense to decide whether to follow a specified route. Detailed coverage not available for every city or roadway. Periodic updates available at an additional cost. See your Navigation System Owner's Manual for further details. Navigational systems in some vehicles are available with bilingual capability. **Mark Levinson®** is a registered trademark of Harman International Industries Incorporated. Be sure to obey traffic regulations and always maintain awareness of road and traffic regulations. Apps/Services vary by phone/carrier; functionality depends on many factors. Select Apps use large amounts of data; you are responsible for these charges. Contact with the response centre may not be available in all areas. Service agreement required. A variety of subscription terms available. Charges will vary. [CN2] **Lexus App:** Driving while distracted can result in loss of vehicle control. Obey all local laws concerning the use of the systems while driving as some laws prohibit the use of electronic devices while operating a vehicle. Enform Services are dependent upon connection to a 3rd party compatible wireless cellular network, either 3G GSM/GPRS or LTE. Lexus is not responsible for cellular network discontinuance. Select Enform apps and services use significant amounts of data and customers are responsible for all data charges. Apps and services vary by phone/carrier and not all services are available all the time and in all locations. Smartphone operating system updates may affect connectivity between your phone and vehicle; Lexus is not responsible for connectivity issues. **Enform Remote and Service Connect:** Do not remotely start engine if vehicle is in an enclosed space or vehicle is occupied by a child. Enform Remote and Service Connect are dependent upon an operative telematics device, a cellular connection, navigation map data and GPS satellite signal reception, and other factors outside of Lexus' control. Registration and app download are required. Select Apps use large amounts of data; you are responsible for charges. To learn about Enform data collection, use, sharing and retention, please visit www.Lexus.ca/Enform-privacy. The Enform Remote and Service Connect trial period is at no extra cost, after which enrollment in a paid subscription is required. Terms and conditions apply. See Lexus.ca/Enform for full details. **Amazon Alexa:** Amazon, Alexa and all related logos are trademarks of Amazon.com, Inc. or its affiliates. Skills and services subject to change at any time without notice. Three-year complimentary trial; app downloads required. **Enform Destination Assist:** Be sure to obey traffic regulations and maintain awareness of road and traffic conditions at all times. The Destination Assist trial period is at no extra cost after which enrollment in a paid subscription is required. Terms and conditions apply. **Enform Safety Connect:** Contact with Safety Connect™ response centre is dependent upon the telematics device being in operative condition, cellular connectivity availability, and GPS satellite signal reception, which can limit the ability to reach the response centre or receive emergency support. The Enform Safety Connect trial period is at no extra cost after which enrollment in a paid subscription is required. Terms and conditions apply. **Android Auto:** Android Auto™, Google Assistant™, Google Maps™ and Google Play™ are trademarks of Google Inc. All rights reserved. **Apple CarPlay:** Apple CarPlay™, Siri®, iPhone® and App Store® are registered trademarks of Apple Inc. All rights reserved.

Lexus.ca

1-800-26-LEXUS

To sign up for information on Lexus, go to Experience.Lexus.ca

Lexus Canada, One Toyota Place, Toronto, Ontario, M1H 1H9

