



**LEXUS**  
EXPERIENCE AMAZING



THE ALL-NEW 2022  
**LEXUS NX SERIES**

**LEXUS**  
**NX**



# EXPERIENCE THE NEXT CHAPTER IN LUXURY

---

The all-new 2022 Lexus NX Series was reconceived from the inside out to forge a better connection between driver and vehicle. It offers next-generation technology that blends innovation with intuition encapsulated by its modernized design, interior craftsmanship, driving dynamics and safety features. The all-new NX Series promises to usher in an era of luxury to be more in-tune with you.



## MAKE A BOLD FIRST IMPRESSION

---

From the refined grille to the more spacious interior, the all-new 2022 Lexus NX is designed with conviction. The NX features a lower centre of gravity and stronger stance, elevated on 18-inch with available 20-inch wheels. Making a statement from every angle, the Lexus NX features new LED illumination that captivates. In addition to offering head-turning Triple Beam Headlamps, the Lexus NX now includes an L-shaped lamp on the rear fenders and a sleek full-width blade taillight that's constantly illuminated at night drawing attention to the new Lexus rear badging.







# THE INSIDE STORY

---

Enter the luxurious cabin to bolstered two-toned seats and ample space for all passengers. The all-new Lexus NX becomes your personalized oasis with Thematic Ambient Illumination bathing the cabin in up to 14 themes and 64 colours. The driver-centred cockpit includes the all-new Lexus Interface Multimedia System, a standard 9.8-inch up to an impressive 14-inch touchscreen display with wireless Apple CarPlay™ and Android Auto,™ and an available 17-speaker Mark Levinson Audio System.® Offered technological innovations including Digital Key that lets you lock and unlock your vehicle through your smartphone in place of your key fob. The available Advanced Park† system allows you to manoeuvre into tight parking spots.

*†Operator is responsible for maintaining proper control of the vehicle throughout the parking process.*







**LEXUS NX 250**

**LEXUS NX 450h+**

**LEXUS NX 350**

**LEXUS NX 350h**

PROTOTYPE MODELS SHOWN. CANADIAN SPECIFICATIONS MAY VARY.

# THE POWER OF CHOICE

---

Tap into visionary power and efficiency through multiple powertrain options. In addition to the NX 250 2.5 L gas engine and more powerful NX 350h Self-Charging Hybrid Electric, the all-new 2022 Lexus NX adds the choice of a powerful 2.4 L Turbo or the first Lexus Plug-In Hybrid Electric. With 275 HP, the new Lexus NX 350

Turbo transports you with 317 pound-feet of torque. While the new Lexus NX 450h+ Plug-In Hybrid Electric combines an instant electrifying response with exceptional range, including an estimated 61 km on electric power only.<sup>1</sup> All models feature AWD, elevating your confidence and peace of mind whatever the road or the weather bring your way.



## ***F SPORT*** **REFINEMENTS**

---

Available with both Turbo and Plug-In Hybrid Electric models, *F SPORT* packages turn up the bold styling and sporty feel, amplified by the Active Variable Suspension (AVS) option, and front and rear performance dampers. A dedicated *F SPORT* grille and front/rear bumpers create a bold appearance to match its powerful performance. The 20-inch gloss black aluminum wheels are framed by colour-keyed overfenders that increase the curb appeal while adding to the sporty styling.







# ELEVATED SAFETY

---

The all-new Lexus NX delivers exceptional peace of mind courtesy of advances like the latest Lexus Safety System+ 3.0.<sup>2</sup> Experience additional assuredness through technology designed to provide warnings, automatic braking and steering to help circumvent potential accidents. The unique Lexus-first Digital Latch with Safe Exit Assist is designed to prevent doors from opening to avoid the risk of accidental contact with vehicles and cyclists when the vehicle is stopped.

- Pre-Collision System with Pedestrian and Bicycle Detection including:
  - Front to Front Oncoming Vehicle Detection
  - Left Turn Oncoming Vehicle Detection/Braking
  - Right & Left Turn Oncoming Pedestrian Detection/Braking
  - Risk Avoidance Emergency Steer Assist
  - Available Front-Cross Traffic Alert
- Dynamic Radar Cruise Control with Curve Speed Management
- Lane Tracing Assist
- Automatic High Beam
- Road Sign Assist

# EXTERIOR COLOURS

---



EMINENT WHITE PEARL



ULTRA WHITE (*F SPORT*)



ATOMIC SILVER



CLOUDBURST GREY



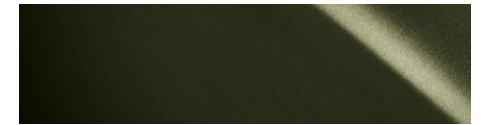
CAVIAR



GRECIAN WATER



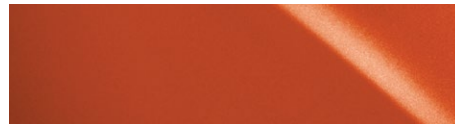
ULTRASONIC BLUE MICA 2.0



NORI GREEN PEARL



REDLINE (*F SPORT*)



CADMIUM ORANGE

# INTERIOR COLOURS

---



BLACK (*F SPORT*)



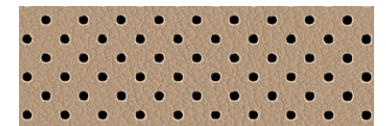
BLACK



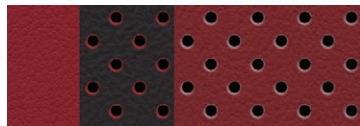
BLACK WITH RICH CREAM



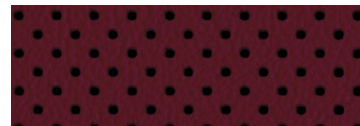
WHITE (*F SPORT*)



PALOMINO



CIRCUIT RED (*F SPORT*)



RIOJA RED

\*Vehicles in this brochure shown with optional equipment. Some features mentioned and/or shown in this brochure may only be available as part of an optional package. Under very cold conditions, the operation of some vehicle electronic systems using liquid crystal technology (such as CD, DVD, NAV and Audio displays) may be adversely affected until a warmer interior vehicle temperature is reached. Lexus reminds you to place small children in CSA-approved car seats - in the rear seats, to always wear your seatbelts, and to drive safely. **1. Horsepower/Performance:** Ratings achieved using the required premium unleaded gasoline with an octane rating of 91 or higher. The Lexus Hybrids have nearly 70% fewer smog-forming emissions compared against similarly equipped conventional gasoline power vehicles. Based on North American sales data and Federal Tier 2 engine emission requirements. **Fuel Rating:** Estimates determined using approved Government of Canada Test Methods. Actual fuel consumption will vary based on driving habits and other factors. Refer to the Government of Canada Fuel Consumption Guide for further information. **2. For all safety features,** System effectiveness depends on many factors. Please see your Owner's Manual for further information and a complete list of limitations and directions. **Lane Departure Alert** is designed to read the lane markers of certain roads. If the vehicle approaches the outer limits of its lane, the system warns the driver that corrective action may be required. It is not a collision-avoidance system and is not a substitute for safe and attentive driving. **Lane Trace Assist** is designed to read the lane markers of certain roads. If the vehicle approaches the outer limits of its lane, the system warns the driver that corrective action may be required. It is not a collision-avoidance system and is not a substitute for safe and attentive driving. Do not rely exclusively on the **Rear Cross-Traffic Alert System**. There are limitations to the function, detection and range of the system. You should also look around outside your vehicle, over your shoulder and use your mirrors to confirm rearward clearance. Do not rely exclusively on the **Blind Spot Monitor System** to determine if a lane change is safe. Always look over your shoulder and use your turn signal before changing lanes. There are severe limits to the function, detection range and clarity of the monitor system. **Dynamic/Radar Cruise Control** was designed to assist the driver and is not a substitute for safe and attentive driving practices. **The Pre-collision System** is designed to help reduce the crash speed and damage in certain frontal collisions only. It is not a collision avoidance system and is not a substitute for safe and attentive driving. System effectiveness depends on many factors, such as speed, driver input and road conditions. **Automatic High Beam** feature can help improve vision at night. However, conditions such as a dirty windshield, rapidly changing light conditions or hilly terrain will limit effectiveness so the driver may need to manually adjust the high beams from on to off. **Brake Assist** is designed to help the driver take full advantage of the benefits of ABS. It is not a substitute for safe driving practices. Braking effectiveness also depends on proper brake-system maintenance and tire and road conditions. All the **airbag ("AB") systems are Supplemental Restraint Systems**. All ABs (if installed) are designed to inflate only under certain conditions and in certain types of severe collisions: frontal and knee ABs typically inflate in frontal collisions; side and side curtain ABs in side collisions; Roll-Sensing Curtain ABs at a severe tilt degree, roll or lateral G-force. Do not rely exclusively on **Safe Exit Assist**. Always look for approaching traffic before exiting the vehicle. There are limitations to the function, detection and range of the Safe Exit Assist system. See Owner's Manual for additional limitations and details. **3. The Navigation System** is designed to assist in locating an address or point of interest. Discrepancies may be encountered between the system and your actual location. Road system changes may affect the accuracy of the information provided. Rely on your common sense to decide whether to follow a specified route. Detailed coverage not available for every city or roadway. Periodic updates available at an additional cost. See your Navigation System Owner's Manual for further details. Navigational systems in some vehicles are available with bilingual capability. **Mark Levinson®** is a registered trademark of Harman International Industries Incorporated. Be sure to obey traffic regulations and always maintain awareness of road and traffic regulations. Apps/ Services vary by phone/carrier; functionality depends on many factors. Select Apps use large amounts of data; you are responsible for these charges. Contact with the response centre may not be available in all areas. Service agreement required. A variety of subscription terms available. Charges will vary. **Lexus App:** Driving while distracted can result in loss of vehicle control. Obey all local laws concerning the use of the systems while driving as some laws prohibit the use of electronic devices while operating a vehicle. Lexus Interface Connected Services are dependent upon connection to a third-party compatible wireless cellular network, either 3G GSM/GPRS or LTE. Lexus is not responsible for cellular network discontinuance. Select Lexus Interface apps and services use significant amounts of data and customers are responsible for all data charges. Apps and services vary by phone/carrier and not all services are available all the time and in all locations. Smartphone operating system updates may affect connectivity between your phone and vehicle; Lexus is not responsible for connectivity issues. **Remote and Service Connect:** Do not remotely start engine if vehicle is in an enclosed space or vehicle is occupied by a child. Services are dependent upon connection to a compatible 4G wireless network, provided by a third-party wireless service provider. Lexus is not responsible for 4G cellular network discontinuance and will not provide compensation for reduced service availability. Based on current information, 4G network availability may end as early as 2029. To learn about Lexus Interface Connected Services data collection, use, sharing and retention, please visit [www.lexus.ca/connectedservices-privacy](http://www.lexus.ca/connectedservices-privacy). The Remote Connect and Service Connect trial period is at no extra cost, after which enrollment in a paid subscription is required. Terms and conditions apply. See [lexus.ca/interface](http://lexus.ca/interface) for full details. **Amazon Alexa:** Amazon, Alexa and all related logos are trademarks of Amazon.com, Inc. or its affiliates. Skills and services subject to change at any time without notice. Three-year complimentary trial; app downloads required. **Enform Destination Assist:** Be sure to obey traffic regulations and maintain awareness of road and traffic conditions at all times. The Destination Assist trial period is at no extra cost after which enrollment in a paid subscription is required. Terms and conditions apply. **Enform Safety Connect:** Contact with Safety Connect™ response centre is dependent upon the telematics device being in operative condition, cellular connectivity availability, and GPS satellite signal reception, which can limit the ability to reach the response centre or receive emergency support. The Enform Safety Connect trial period is at no extra cost after which enrollment in a paid subscription is required. Terms and conditions apply. **Apple CarPlay™**, Siri®, iPhone® and App Store® are registered trademarks of Apple Inc. All rights reserved. **Android Auto™**, Google Assistant™, Google Maps™ and Google Play™ are trademarks of Google Inc. All rights reserved.

lexus.ca

1 800 26-LEXUS

To sign up for information on Lexus, go to [experience.lexus.ca](http://experience.lexus.ca)

Lexus Canada, One Toyota Place, Toronto, Ontario, M1H 1H9

