

LEXUS UX

2022





WELCOME TO LEXUS

Thank you for your interest in Lexus. You've taken the first step into a world of thoughtfully engineered products, precision craftsmanship and unrivalled Guest care. Welcome to a luxury experience where we strive to treat you like a "Guest in our home."

Life can be full of pressures, yet also full of moments to capture and enjoy. At Lexus, we want to give you the freedom to chase and experience those moments. That's why we dedicate the time toward every vehicle and every service – so you can make the most of yours.

We know time is the ultimate luxury and our brand promise is to focus our efforts on delivering vehicles, technologies and guest services that allow you to enjoy those special moments in life.

I invite you to explore our 2022 model selection. Whether it's one of our luxury SUVs, a breathtaking coupe or a nimble performance sedan, I know there is a Lexus waiting to help you enjoy the drive and make time for amazing.

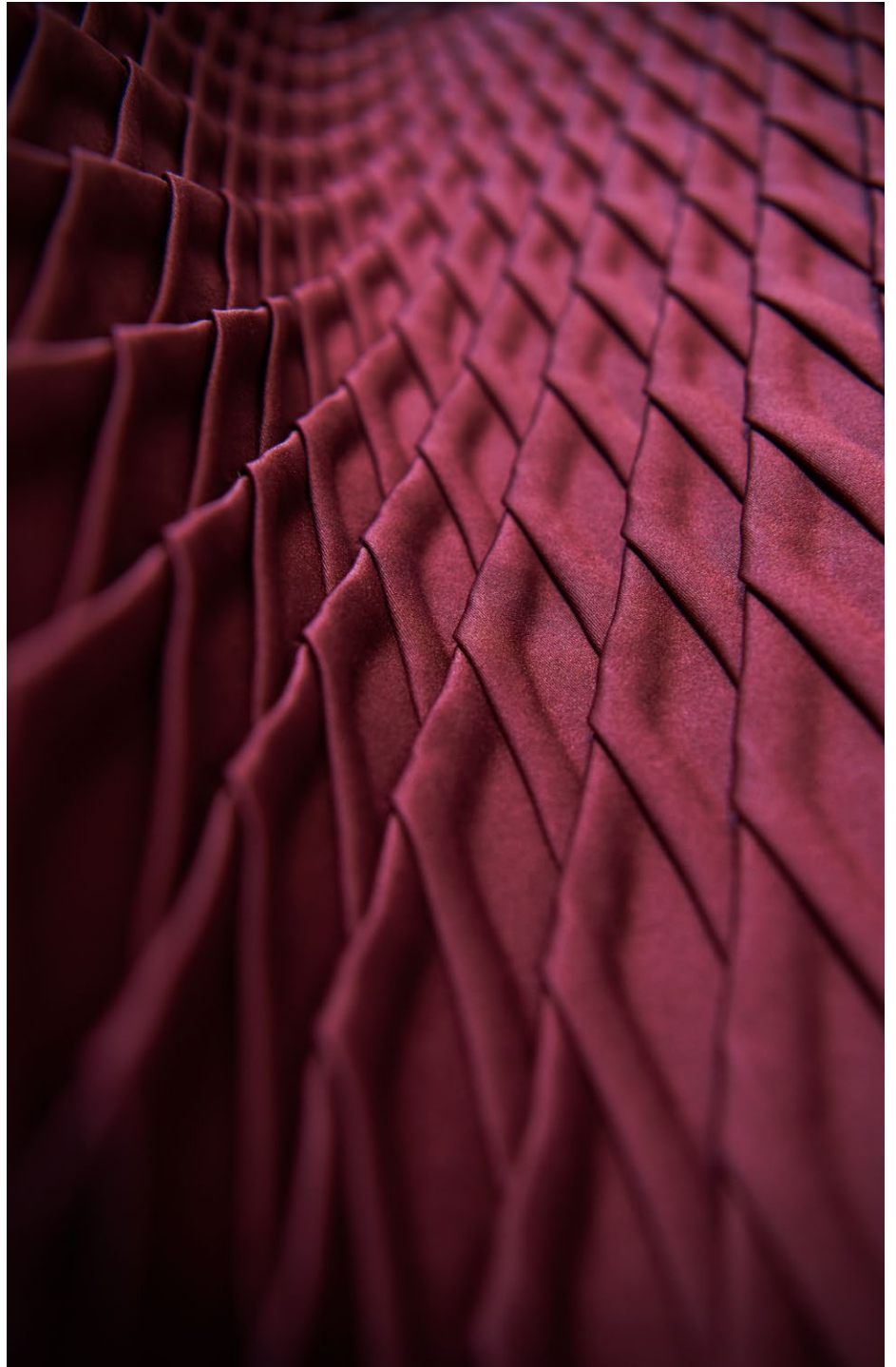
A handwritten signature in black ink, reading "M. Gilbert". The signature is fluid and cursive, with a prominent initial "M" and a stylized "G".

Martin Gilbert
Director of Lexus Canada

EXPERIENCE SOMETHING GREATER

From the start, Lexus has redefined luxury. The Japanese principle of Omotenashi brings unrivalled Guest hospitality, with a dedication to treating everyone with warmth, care and respect as if they were a Guest in our home. Its cutting-edge design and exceptional attention to detail shows the meticulous craftsmanship of legendary Lexus Takumi Masters. Lexus looks forward to realizing a brighter, cleaner future thanks to its innovative electrified vehicle offerings, which encapsulate the “Lexus Electrified” vision. Along with pioneering innovations, impassioned styling and a thirst for enhancing every drive, it’s a luxury experience unlike any other.







IN A CLASS OF ITS OWN

The Lexus UX is perfectly crafted for city-smart driving. A bold iteration of the Lexus Spindle Grille, coupled with beautifully flared fenders, striking aluminum wheels with an aerodynamic design and stunning high-output headlights, emphasize UX's strong crossover qualities. Those who wish to experience the beauty of the *F SPORT* Special Edition enjoy unique bold appointments such as the exclusive black *F SPORT* interior with intricate blue stitching, black accent headlamps and other exclusives.





THOUGHTFUL DESIGN AT EVERY TOUCH

Inside, the UX's interior is everything you would expect from Lexus. Harmonious design to contemporary finishes welcome the driver and passengers alike. A driver-centric cockpit offer a commanding view of the road, with controls perfectly at hand. In addition to superior ergonomics, UX offers technologies designed to elevate the drive such as Apple CarPlay™ and Android Auto,™ which work in harmony with standard Lexus Enform,³ backup camera, available wireless phone charging and head up display. Lexus Safety System+ 2.0, a suite of driver assisted technologies, comes standard with pre-collision and Lane Tracing Assist to help make each drive a safer one.²



AGILE IN EVERY POSSIBLE WAY

Setting the tone for its dynamic performance, the UX boasts high structural rigidity and a low centre of gravity, offering quick handling response with exceptional stability. The Self-Charging Hybrid powertrain with AWD capability further highlights a formidable features set. The UX produces an impressive

181 net horsepower, while boasting the best fuel efficiency in its class,¹ as well as impressive turning radius and agile maneuverability. Elevate your drive with available *F SPORT* models with Paddle Shifters and active sound control for a more engaging drive.

	POWER¹	ENGINE	FUEL RATING¹ (L/100 km) (City/Hwy)	SEATS	AIRBAG²
UX 250h AWD	181 Net HP	Self-Charging Hybrid Electric	5.7/6.2	5	10



F SPORT

Experience the exhilaration of style and performance with *F SPORT* packages for your everyday driving enjoyment. *F SPORT* features interior enhancements such as paddle shifters, an LFA-inspired digital dashboard and enhanced steering wheel, shift knob and seating. The exterior features an attention-grabbing mesh grille and exclusive *F SPORT* alloy wheels. Set yourself further apart with the available *F SPORT* Special Edition, which adds unique touches of style including blue stitching and other accents around the black interior, as well as an exclusive black finish exterior.

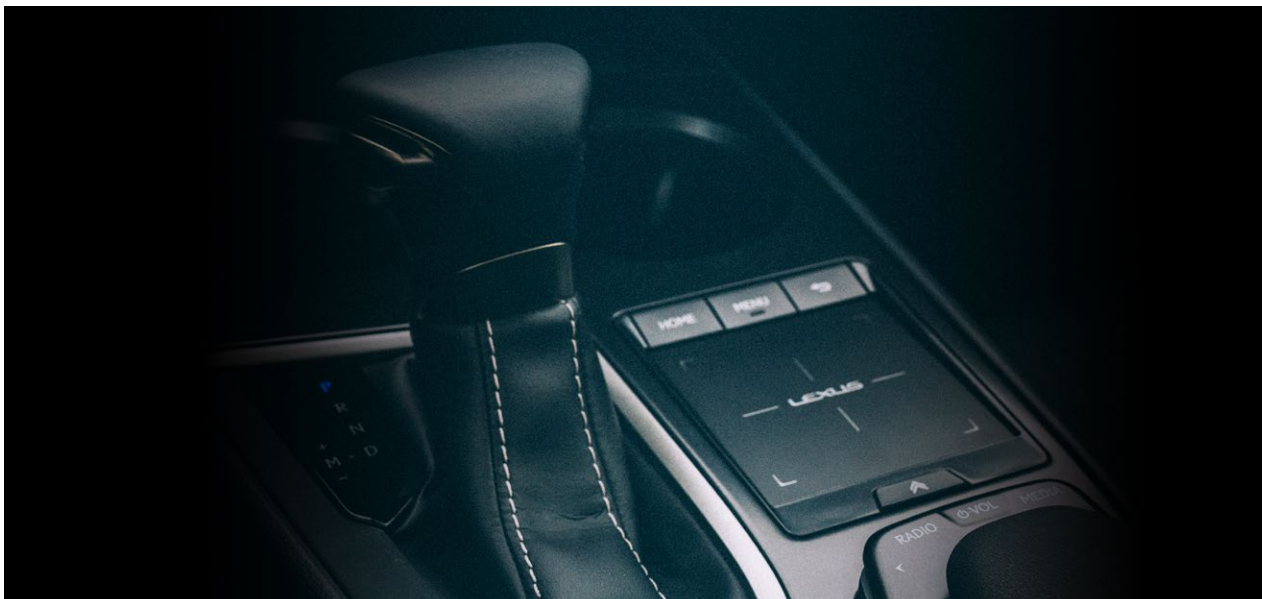


SELF-CHARGING HYBRID ELECTRIC

Always pushing the boundaries of not only what can be done, but what should be done, Lexus is the leader in hybrid technology development. Our Self-Charging Hybrid Electric technology provides enhanced powertrains that pair impressive fuel efficiency with reduced emissions, so you never compromise on performance, or an enjoyable driving experience.¹

Visit Lexus.ca/Hybrid to learn more about Lexus Self-Charging Hybrid Electric technology.





TECHNOLOGY

LEXUS ENFORM

Lexus Enform offers progressive technology to make every journey richer. Discover where to go with available Destination Assist and access a live Enform Response Agent 24/7 who can find the location you're looking for and send the route to your Lexus Navigation system.

For added confidence, Enform-equipped Lexus vehicles feature Enform Safety Connect, so that Enform Response Agents can assist you in the event of a collision or even help locate your vehicle should it be stolen.³ For added convenience, your vehicle's multimedia display is compatible with Apple CarPlay™ and Android Auto.™³

Visit Lexus.ca/Enform to view vehicle compatibility and more information regarding complimentary trial terms.



RX 350 Shown for Demonstrative Purposes.

LEXUS APP

With the Lexus App, the opportunities to stay connected to your vehicle are more plentiful than ever. On 2022 Lexus models, use Enform Remote to monitor your vehicle's status, even when it's out of sight. Conveniently start or unlock your vehicle from your smartphone, Amazon Alexa,TM Google Assistant devices and/or select smartwatches. Set guest parameters for occasional drivers such as valets or family members and receive a notification if a boundary is crossed. Plus, with Enform Service Connect, convenient vehicle health reports with information about your Lexus' maintenance needs are sent right to your Lexus App, so you can always stay informed.³

Visit Lexus.ca/Enform to view vehicle compatibility and more information around complimentary trial terms.

LEXUS SAFETY SYSTEM+²

Lexus Safety System+ (LSS+ 2.0) is a comprehensive suite of advanced technologies and intelligent sensors that help keep you protected and create a more confident driving experience to focus on the road ahead.²

LSS+ 2.0:

- Pre-Collision System with Low-light Pedestrian and Daytime Bicycle Detection
- Lane Tracing Assist
- Automatic High Beam
- Dynamic Radar Cruise Control

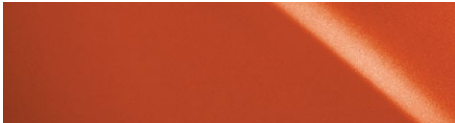
Visit Lexus.ca/Safety to learn more about LSS+ 2.0.



EXTERIOR COLOURS



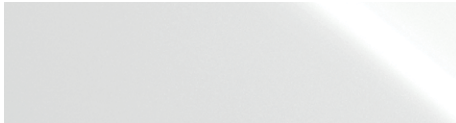
EMINENT WHITE PEARL



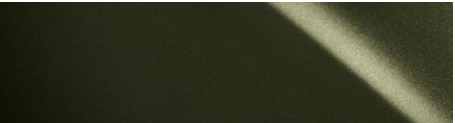
CADMIUM ORANGE



REDLINE (*F SPORT*)



ULTRA WHITE (*F SPORT*)



NORI GREEN PEARL



ULTRASONIC BLUE MICA 2.0 (*F SPORT*)



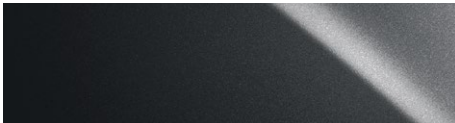
ATOMIC SILVER



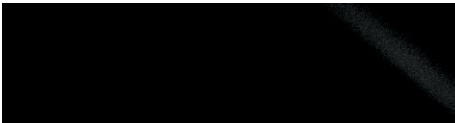
CAVIAR



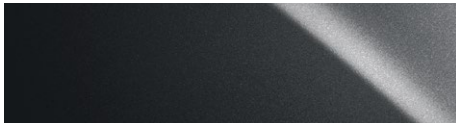
GRECIAN WATER



CLOUDBURST GREY
(*F SPORT SPECIAL EDITION*)



OBSIDIAN (*F SPORT*)



NEBULA GREY PEARL

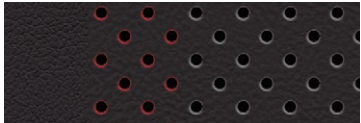
INTERIOR COLOURS



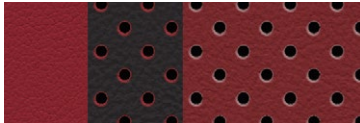
WHITE (*F SPORT*)



BLACK



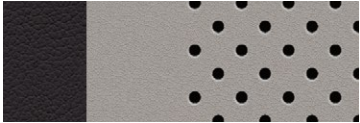
BLACK (*F SPORT*)



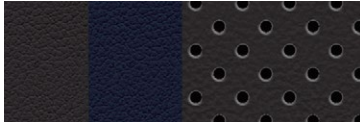
CIRCUIT RED (*F SPORT*)



GLAZED CARAMEL



BIRCH



BLACK W/LAPIS
(*F SPORT SPECIAL EDITION*)

WARRANTY INFORMATION

SERVICE COMMITMENT

On top of enjoying the highest quality product, Lexus also delivers through a professional Dealer network, a unique and uncompromising level of after-sales service and First Class Service Concept. The highest level of professionalism and vehicle support ensure that Lexus ownership experience is as luxurious as the vehicles.

WARRANTY

Our Lexus Warranty Comprehensive Coverage includes:
48 months/80,000 km.

SERVICE REPLACEMENT PARTS WARRANTY

24 months/40,000 km:

Applicable to Lexus Genuine Parts installed by a Lexus Dealer on a Lexus vehicle or purchased over the counter.

HYBRID-RELATED COMPONENTS

96 months/160,000 km (Applies to battery control module, hybrid vehicle control module, hybrid battery and the inverter/converter.)

2022 Model Year HV Battery coverage has been extended to 10 years or 240,000 km.

POWERTRAIN

72 months/110,000 km.

CORROSION PERFORATION

72 months/unlimited kilometres.

MAJOR EMISSION CONTROL COMPONENTS

96 months/130,000 km

Please see your Lexus Dealer for details. Lexus will even provide five days of alternate transportation if your vehicle is required to stay at the dealership for an extended period of time due to a warrantable condition.

EXTRA CARE PROTECTION

Extend beyond the new vehicle warranty and enhance your peace of mind with Lexus Extra Care Protection.

ROADSIDE ASSISTANCE

As a proud owner of a Lexus vehicle, you won't have to worry about obtaining assistance when mishaps requiring Emergency Roadside Service or Mechanical Breakdown Towing are needed. Throughout Canada and the continental U.S., our Central Emergency Roadside Services Operator will always be there to ensure you receive prompt, efficient services from one of the many facilities qualified under our approved Roadside Assistance Program. Twenty-four hours a day, 365 days a year, we will be there to help.

LEXUS FINANCIAL SERVICES

Come talk to the experts whose exclusive business is financing and leasing Lexus vehicles. You'll find our interest rates fully competitive and our terms flexible - up to 72 months. Our online services conveniently allow you to confirm current rates and receive your credit approval in advance of selecting the Lexus that's right for you. For help, visit your Lexus Dealer or lexus.ca, or call 1-800-26-LEXUS.

LEXUS CANADA

Every effort has been made to ensure the specifications and equipment shown are accurate based on information available at time of printing. In some cases, certain changes in standard equipment, options or product delays may occur, which are not reflected in this brochure. Lexus Canada reserves the right to make these changes without notice or obligation. Some of the photography in this brochure features U.S. or overseas models, shown with optional equipment that may not be available in Canada. Your Lexus Dealer is the best source for up-to-date information.

Lexus.ca
1-800-26-LEXUS

To sign up for information on Lexus, go to experience.lexus.ca
Lexus Canada
One Toyota Place,
Toronto, Ontario
M1H 1H9

*Vehicles in this brochure shown with optional equipment. Some features mentioned and/or shown in this brochure may only be available as part of an optional package. Under very cold conditions, the operation of some vehicle electronic systems using liquid crystal technology (such as CD, DVD, NAV and Audio displays) may be adversely affected until a warmer interior vehicle temperature is reached. Lexus reminds you to place small children in CSA-approved car seats - in the rear seats, to always wear your seatbelts, and to drive safely. **1. Horsepower/Performance:** Ratings achieved using the required premium unleaded gasoline with an octane rating of 91 or higher. The Lexus Hybrids have nearly 70% fewer smog-forming emissions compared against similarly equipped conventional gasoline power vehicles. Based on North American sales data and Federal Tier 2 engine emission requirements. **Fuel Rating:** Estimates determined using approved Government of Canada Test Methods. Actual fuel consumption will vary based on driving habits and other factors. Refer to the Government of Canada Fuel Consumption Guide for further information. **2. For all safety features,** System effectiveness depends on many factors. Please see your Owner's Manual for further information and a complete list of limitations and directions. **Lane Departure Alert** is designed to read the lane markers of certain roads. If the vehicle approaches the outer limits of its lane, the system warns the driver that corrective action may be required. It is not a collision-avoidance system and is not a substitute for safe and attentive driving. **Lane Trace Assist** is designed to read the lane markers of certain roads. If the vehicle approaches the outer limits of its lane, the system warns the driver that corrective action may be required. It is not a collision-avoidance system and is not a substitute for safe and attentive driving. Do not rely exclusively on the **Rear Cross-Traffic Alert System**. There are limitations to the function, detection and range of the system. You should also look around outside your vehicle, over your shoulder and use your mirrors to confirm rearward clearance. Do not rely exclusively on the **Blind Spot Monitor System** to determine if a lane change is safe. Always look over your shoulder and use your turn signal before changing lanes. There are severe limits to the function, detection range and clarity of the monitor system. **Dynamic/Radar Cruise Control** was designed to assist the driver and is not a substitute for safe and attentive driving. **The Pre-collision System** is designed to help reduce the crash speed and damage in certain frontal collisions only. It is not a collision avoidance system and is not a substitute for safe and attentive driving. System effectiveness depends on many factors, such as speed, driver input and road conditions. **Automatic High Beam** feature can help improve vision at night. However, conditions such as a dirty windshield, rapidly changing light conditions or hilly terrain will limit effectiveness so the driver may need to manually adjust the high beams from on to off. **Brake Assist** is designed to help the driver take full advantage of the benefits of ABS. It is not a substitute for safe and attentive driving. Braking effectiveness also depends on proper brake-system maintenance and tire and road conditions. All the **airbag ("AB") systems are Supplemental Restraint Systems**. All ABs (if installed) are designed to inflate only under certain conditions and in certain types of severe collisions: frontal and knee ABs typically inflate in frontal collisions; side and side curtain ABs in side collisions; Roll-Sensing Curtain ABs at a severe tilt degree, roll or lateral G-force.[CN1] **3. The Navigation System** is designed to assist in locating an address or point of interest. Discrepancies may be encountered between the system and your actual location. Road system changes may affect the accuracy of the information provided. Rely on your common sense to decide whether to follow a specified route. Detailed coverage not available for every city or roadway. Periodic updates available at an additional cost. See your Navigation System Owner's Manual for further details. Navigational systems in some vehicles are available with bilingual capability. **Mark Levinson®** is a registered trademark of Harman International Industries Incorporated. Be sure to obey traffic regulations and always maintain awareness of road and traffic regulations. Apps/Services vary by phone/carrier; functionality depends on many factors. Select Apps use large amounts of data; you are responsible for these charges. Contact with the response centre may not be available in all areas. Service agreement required. A variety of subscription terms available. Charges will vary. [CN2] **Lexus App:** Driving while distracted can result in loss of vehicle control. Obey all local laws concerning the use of the systems while driving as some laws prohibit the use of electronic devices while operating a vehicle. Enform Services are dependent upon connection to a 3rd party compatible wireless cellular network, either 3G GSM/GPRS or LTE. Lexus is not responsible for cellular network discontinuance. Select Enform apps and services use significant amounts of data and customers are responsible for all data charges. Apps and services vary by phone/carrier and not all services are available all the time and in all locations. Smartphone operating system updates may affect connectivity between your phone and vehicle; Lexus is not responsible for connectivity issues. **Enform Remote and Service Connect:** Do not remotely start engine if vehicle is in an enclosed space or vehicle is occupied by a child. Enform Remote and Service Connect are dependent upon an operative telematics device, a cellular connection, navigation map data and GPS satellite signal reception, and other factors outside of Lexus' control. Registration and app download are required. Select Apps use large amounts of data; you are responsible for charges. To learn about Enform data collection, use, sharing and retention, please visit www.Lexus.ca/Enform-privacy. The Enform Remote and Service Connect trial period is at no extra cost, after which enrollment in a paid subscription is required. Terms and conditions apply. See Lexus.ca/Enform for full details. **Amazon Alexa:** Amazon, Alexa and all related logos are trademarks of Amazon.com, Inc. or its affiliates. Skills and services subject to change at any time without notice. Three-year complimentary trial; app downloads required. **Enform Destination Assist:** Be sure to obey traffic regulations and maintain awareness of road and traffic conditions at all times. The Destination Assist trial period is at no extra cost after which enrollment in a paid subscription is required. Terms and conditions apply. **Enform Safety Connect:** Contact with Safety Connect™ response centre is dependent upon the telematics device being in operative condition, cellular connectivity availability, and GPS satellite signal reception, which can limit the ability to reach the response centre or receive emergency support. The Enform Safety Connect trial period is at no extra cost after which enrollment in a paid subscription is required. Terms and conditions apply. **Android Auto:** Android Auto™, Google Assistant™, Google Maps™ and Google Play™ are trademarks of Google Inc. All rights reserved. **Apple CarPlay:** Apple CarPlay™, Siri®, iPhone® and App Store® are registered trademarks of Apple Inc. All rights reserved.

Lexus.ca

1-800-26-LEXUS

To sign up for information on Lexus, go to Experience.Lexus.ca

Lexus Canada, One Toyota Place, Toronto, Ontario, M1H 1H9

