

BMW 3 Series  
Cabriolet

325Ci  
330Ci



The Ultimate  
Driving Experience.™





HAWAII  
GYG 109  
ALOHHA STATE

What you really expect from a Cabriolet is **enjoyment...** but why so modest?



The most beautiful navigation system  
in the world comes as standard: **the stars.**





Heaven above.  
And below.

## Equipment



■ **Xenon headlights for low and high beam**, with luminous rings, including dynamic headlight range control for much better illumination of the road ahead in bad weather or poor visibility. These headlights also feature auto-levelling to adjust for varying passenger and cargo loads.



■ **Foglights** in halogen free-form technology are integrated into the front air dam, and ensure additional visibility and safety in bad weather or poor visibility.



■ **The rain sensor** uses an infrared light to measure the amount of rain. When the wipers are in the "intermittent" mode, the rain sensor automatically adjusts the windshield wiping interval as needed. Also includes automatic headlight function.



□ **Park Distance Control (PDC)** uses ultrasonic sensors in the rear bumpers to help you judge the distance to other cars and unseen objects when parking. The beeping becomes faster as your bumper approaches the object, turning into a constant tone when the distance is less than 30 centimetres.



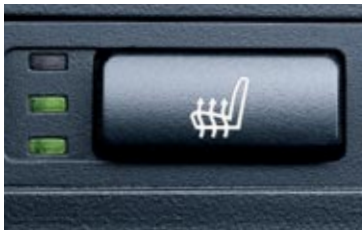
□ **Fully automatic softtop** provides the ease of one-touch raising and lowering. It is automatically stored in a special compartment under the flush-mounted, body-colour, magnesium tonneau cover. (Standard on the 330Ci.)



■ **Star Spoke alloy wheels** (with all-season tires), Style 169, 16 X 7.0, 205/55R-16



■ **Multi-function leather sport steering wheel** offers highly convenient operation, increased safety and an ergonomical design that makes it fit especially well in the driver's hands.



■ **Seat heating** is a welcome feature in cooler weather. With the touch of a button, you can individually select from three heat settings.



□ **On-Board Navigation System** guides you conveniently and directly to your destination. In addition to providing driving instructions via voice, directional arrows or map display, the system will provide destination-specific information. Includes Canada/USA Navigation DVD.

## Equipment



■ **Six-speed manual transmission** makes for extremely dynamic driving. Smooth and optimally synchronized, it boasts precise, short shift throws. The more tightly graded transmission and additional sixth gear make the engine even more responsible to your personal style of driving. (Available only on 330Ci.)



□ **Telephone and BMW Assist preparation** enhances driving safety even further with Bluetooth technology. A full Telephone and BMW Assist preparation includes one year of BMW Assist Safety and Security Telematics Services at no extra charge. With the BMW Assist Safety and Security Package, you get access to Emergency and Roadside Assistance Telematics Services.



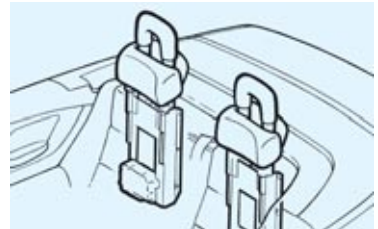
□ **Harman/Kardon Sound System** projects exceptional sound from upgraded speakers and amplification, plus a subwoofer and vehicle-speed-sensitive equalization. (Standard on 330Ci.)



■ **Interior auto-dimming mirror** increases driving safety and comfort for driving at night. Depending on the dazzle intensity, the interior mirror dims accordingly in order to minimize glare. When dazzling has ceased the mirrors return to the original degree of reflection. The programmable garage door opener is included.



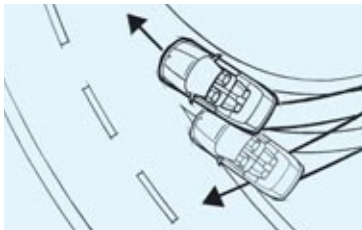
■ **Vehicle Memory** allows you to program a full range of individual settings and features on your car, including the Follow-Me-Home function. **Key Memory** allows you to set your preferred seat position of the electrically adjustable driver's seat. Furthermore, it is possible to set the automatic climate control to the interior temperature and air distribution to a specific key.



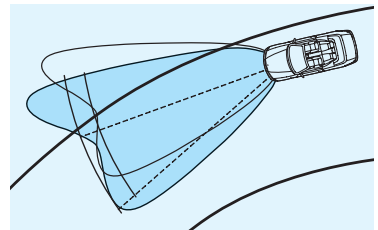
■ **Rollover Protection System** greatly enhances occupant safety with sensors that can detect the possibility of a rollover. When the system is activated, steel bars – discreetly integrated into the rear headrests – deploy automatically.



■ **Rigid body:** design features to ensure the rigidity of the utilized body include special reinforcement of the A-pillar and the top of the windshield frame, more generous sills and special lateral reinforcements.



■ **Dynamic Stability Control (DSC)** recognizes the risk of the car skidding very early and stabilizes the car within milliseconds. Also includes **Dynamic Brake Control (DBC)**.



□ **Adaptive Headlights** electromechanically operate the xenon headlights so that they swivel from side to side and thus optimally illuminate a curve the moment the driver steers into it, for increased safety when driving at night or when visibility is poor. Sensors register current curve angle, yaw rate and vehicle speed. The headlights then automatically adapt to the determined curve conditions.

Standard Equipment | Optional Equipment

Performance and Efficiency	325Ci	330Ci	Sound System	325Ci	330Ci
<b>2.5-litre, 184 hp dual overhead cam (DOHC), 24-valve in-line 6-cylinder engine</b>	■	—	<b>Anti-theft AM/FM stereo/CD sound system</b> with 10 speakers, Radio Data System (RDS), Dolby B/C noise reduction, Auto-Store, pre-wired for CD Changer	■	—
<b>3.0-litre, 225 hp dual overhead cam (DOHC), 24-valve in-line 6-cylinder engine</b>	—	■	<b>Harman/Kardon Sound System</b> projects exceptional sound on upgraded speakers and amplification, plus a subwoofer and vehicle-speed-sensitive equalization	□	■
<b>5-speed manual transmission</b>	■	—	<b>In-dash CD player</b> , with MP3 capability	■	■
<b>6-speed manual transmission</b>	—	■	<b>Interior Seating and Trim</b>		
<b>5-speed STEPTRONIC 3-mode</b> (automatic/sport automatic/clutchless manual) transmission with Adaptive Transmission Control (ATC)	□	□	<b>3-position driver's seat</b> and exterior mirror memory	□	■
<b>6-speed SMG (Sequential Manual Gearbox)</b>	—	□	<b>3-spoke multi-function leather sport steering wheel</b> with fingertip cruise, audio and accessory phone controls	■	■
<b>Double-VANOS</b> steplessly variable valve timing	■	■	<b>3-stage, thermostatically controlled heated front seats</b>	■	■
<b>Dual resonance intake system</b>	■	■	<b>8-way power front seats</b>	■	■
<b>Handling, Ride and Braking</b>			<b>Front centre armrest</b> with storage compartment	■	■
<b>Automatic fuel cut-off, triggered by airbag deployment</b>	■	■	<b>Interior Trim:</b>		
<b>Disc brakes, 4-wheel inner-vented anti-lock</b> with electronic front/rear proportioning	■	■	– Titanium	■	■
<b>Dynamic Stability Control (DSC)</b> incl. DBC	■	■	– Myrtle Wood	□	□
<b>Engine-speed-sensitive, variable-assist power steering</b>	■	■	<b>Lumbar support</b> , 4-way adjustable	□	□
<b>Multi-link rear suspension</b> with cast-aluminum upper transverse arms	■	■	<b>Seatback easy-entry feature with memory</b>	■	■
<b>Strut-type front suspension</b> with forged aluminum lower arms, hydraulic cushions	■	■	<b>Upholstery:</b>		
<b>Twin-tube gas-pressure shock absorbers</b>	■	■	– Leatherette	■	—
			– Montana Leather	□	■
<b>Exterior</b>			<b>Comfort and Convenience</b>	<b>325Ci</b>	<b>330Ci</b>
<b>Body-colour hardtop</b> with integrated rear window defroster, retractable coat hooks and individual reading lights front and rear	□	□	<b>Prewiring for alarm system and CD Changer</b>	■	■
<b>Black colour finish trim</b> on front bumper air inlet	■	■	<b>Automatic Climate Control</b> and air recirculation	■	■
<b>Fully automatic softtop</b>	□	■	<b>Auto-dimming interior rearview mirror</b> including garage door opener	■	■
<b>Fully lined electric fabric softtop</b> with glass rear window and electric rear window defroster	■	■	<b>Automatic tilt-down of passenger's side view mirror</b> (when vehicle is shifted into reverse gear)	□	■
<b>Foglights</b> , halogen free-form	■	■	<b>BMW Ambiance Lighting</b>	■	■
<b>High-pressure headlight cleaning system</b>	■	■	<b>Electric interior trunk release</b>	■	■
<b>Heated windshield washer jets and exterior mirrors</b>	■	■	<b>Expandable cargo space</b> with top raised	■	■
<b>Metallic paint</b>	□	□	<b>Front map reading and footwell lights</b>	■	■
<b>Tires:</b>			<b>Fully finished trunk</b> with reversible mat and drop-down tool kit	■	■
Star Spoke alloy wheels (with all-season tires), Style 169, 16 X 7.0, 205/55R-16	■	—	<b>Keyless entry</b> with multi-function remote control, including 2-step unlocking and remote trunk release	■	■
Parallel Spoke alloy wheels (with all-season tires), Style 98, 17 x 7.0, 205/50R-17	—	■	<b>Locking glovebox</b> with rechargeable take-out flashlight	■	■
<b>Xenon headlights for low and high beam</b> , including dynamic headlight range control	■	■	<b>Park Distance Control (PDC)</b> , rear	□	□
			<b>Power front and rear windows</b> ; anti-trap with "one touch" feature up/down operation	■	■
			<b>Rain sensor</b> with automatic headlight function	■	■



Optional Equipment | Standard Equipment

Comfort and Convenience	325Ci	330Ci	Premium Packages	325Ci	330Ci
<b>Ski bag</b>	<input type="checkbox"/>	<input type="checkbox"/>	Adaptive Headlights; Electric seats with driver memory; Harman/Kardon Sound System; Lumbar support	<input type="checkbox"/>	—
<b>Tilt/telescopic steering wheel column</b>	■	■	Adaptive Headlights; Lumbar support; Park Distance Control (rear); Ski bag	—	<input type="checkbox"/>
<b>Vehicle/Key Memory with Follow-Me-Home function</b>	■	■			
<b>Instrumentation and Controls</b>			<b>Sport Packages</b>		
<b>Check Control</b> vehicle monitor system with pictogram	■	■	Sport seats; Sport suspension; Star Spoke alloy wheels (with performance tires) - Style 171, 17 x 8.0, 225/45R-17	<input type="checkbox"/>	—
<b>On-board Computer</b> , 4 functions	■	■	Sport seats; Sport suspension; M Parallel Spoke alloy wheels (with performance tires) - Style 68M, 17 x 7.5 front, 225/45ZR-17, 17 X 8.5 rear, 245/40ZR-17	—	<input type="checkbox"/>
<b>Service Interval Indicator</b> with km-to-service readout	■	■	Double Spoke bolted alloy wheels (with performance tires) - Style 71, 18 x 8.0 front, 225/40 ZR-18, 18 x 8.5 rear, 255/35 ZR-18	—	<input type="checkbox"/>
<b>Telephone and BMW Assist preparation with Bluetooth technology</b> , includes one year of BMW Assist	<input type="checkbox"/>	<input type="checkbox"/>			
<b>Telephone prewiring</b>	<input type="checkbox"/>	<input type="checkbox"/>			
<b>Safety and Security</b>			<b>M Sport Package<sup>1</sup></b>		
<b>Adaptive Headlights</b>	<input type="checkbox"/>	<input type="checkbox"/>	Black Aluminum Cube trim (upgrade Silver Aluminum Cube trim); High-gloss Shadow Line; M Aerodynamic package; M multi-function leather sport steering wheel; Sport seats; Sport suspension; ; M Double Spoke wheels (with performance tires) -Style 135M, 18 x 8.0 front, 255/40 R-18, 18 x 8.5 rear, 255/35 R-18	—	<input type="checkbox"/>
<b>Anti-lock Braking System (ABS)</b> incl. Cornering Brake Control (CBC)	■	■	Silver Aluminum Cube trim	—	<input type="checkbox"/>
<b>Automatic fuel cut-off</b> , triggered by airbag deployment	■	■			
<b>Automatic Locking Retractors (ALR)</b> on all passenger safety belts (for installation of child restraint seats)	■	■			
<b>Automatic Stability Control + Traction (ASC+T)</b>	■	■			
<b>Battery Safety Terminal (BST)</b>	■	■			
<b>Central locking system</b> with centre console switch (leaves gas filler door unlocked), double-lock feature and 2-step unlocking	■	■			
<b>Coded Drive-away Protection</b>	■	■			
<b>Crash sensor</b> , automatically turns on hazard lights and interior lights and unlocks doors	■	■			
<b>Driver's and passenger's front airbag Supplemental Restraint System (SRS)</b> with "smart" dual-threshold, dual-stage deployment and sensor to help prevent unnecessary passenger's airbag deployment	■	■			
<b>Interlocking door anchoring systems</b> to help protect against door intrusion in side impacts	■	■			
<b>Rear side airbags<sup>*1</sup></b>	<input type="checkbox"/>	<input type="checkbox"/>			
<b>Rollover Protection System</b>	■	■			
<b>Seat-integrated front safety belts</b> with automatic pre-tensioners and force limiters	■	■			
<b>Side airbags</b> for driver and front passenger	■	■			
<b>Space-saver spare wheel and tire</b>	■	■			
			<b>M Performance Edition<sup>1</sup></b>		
			Black Aluminum Cube trim; High-gloss Shadow Line; M Aerodynamic Package; M multi-function leather sport steering wheel; Sport seats; M Double Spoke alloy wheels (with performance tires) - Style 135M, 18 x 8.0 front, 225/40 R-18, 18 x 8.5 rear, 255/35 R-18; 235 hp @ 5,900 rpm; 222 lb-ft @ 3,500; Revised engine management; Shorter rear axle ratio; Modified camshaft; 0-100 km/h in 6.4 seconds	—	<input type="checkbox"/>
			<b>Navigation Package<sup>1</sup></b>		
			On-Board Navigation System; Canada/ USA Navigation DVD	<input type="checkbox"/>	<input type="checkbox"/>

<sup>1</sup> See your local BMW Retailer for complete details.

\* Special order item

## Technical Data

<b>Weight</b>		<b>325Ci</b>	<b>330Ci</b>
Unladen weight	kg	1615 (1645)	1640 (1675)
<b>Weight distribution, front/rear</b>			
Manual transmission	%	48.9/51.1	48.7/51.3
Automatic transmission	%	49.2/50.8	49.4/50.6
Max. gross weight man/auto	kg	2015/2045	2040/2075
Max. payload	kg	400	400
Max. axle load, front/rear	kg	945/1155	950/1170
Max. roof load	kg	75	75

<b>Engine</b>		<b>325Ci</b>	<b>330Ci</b>
Litres/type (with Double-VANOS)		2.5/in-line 6	3.0/in-line 6
Displacement	cm <sup>3</sup>	2494	2979
Bore/stroke	mm	84.0/75.0	84.0/89.6
Nominal output/rpm	hp	184/6000	225/5900
Max. torque/rpm	lb/ft	175/3500	214/3500
Compression ratio	:1	10.5	10.2
Fuel Grade		Premium Unleaded	Premium Unleaded

<b>Transmission</b>		<b>325Ci</b>	<b>330Ci</b>
Drive configuration		Rear	Rear
<b>Gear ratios – manual transmission</b>			
I/II	:1	4.23/2.52	4.35/2.50
III/IV	:1	1.66/1.22	1.66/1.23
V/VI/R	:1	1.00/-/4.04	1.00/0.85/3.93
Final drive ratio	:1	3.46	3.07
<b>Gear ratios – automatic transmission</b>			
I/II	:1	3.67/2.00	3.67/2.00
III/IV	:1	1.41/1.00	1.41/1.00
V/R	:1	0.74/4.10	0.74/3.17
Final drive ratio	:1	3.46	3.38

<b>Brakes</b>		<b>325Ci</b>	<b>330Ci</b>
Braking system		4-channel ABS	4-channel ABS
Brake type, front and rear		ventilated disc	ventilated disc
Brake diameter, front/rear	mm	300/294	325/320

<b>Performance</b>		<b>325Ci</b>	<b>330Ci</b>
Drag coefficient	C <sub>d</sub>	0.35	0.35
Top speed <sup>1</sup>	km/h	206	206
Acceleration – 0-100 km	sec	8.3 (9.5)	7.5 (7.9)

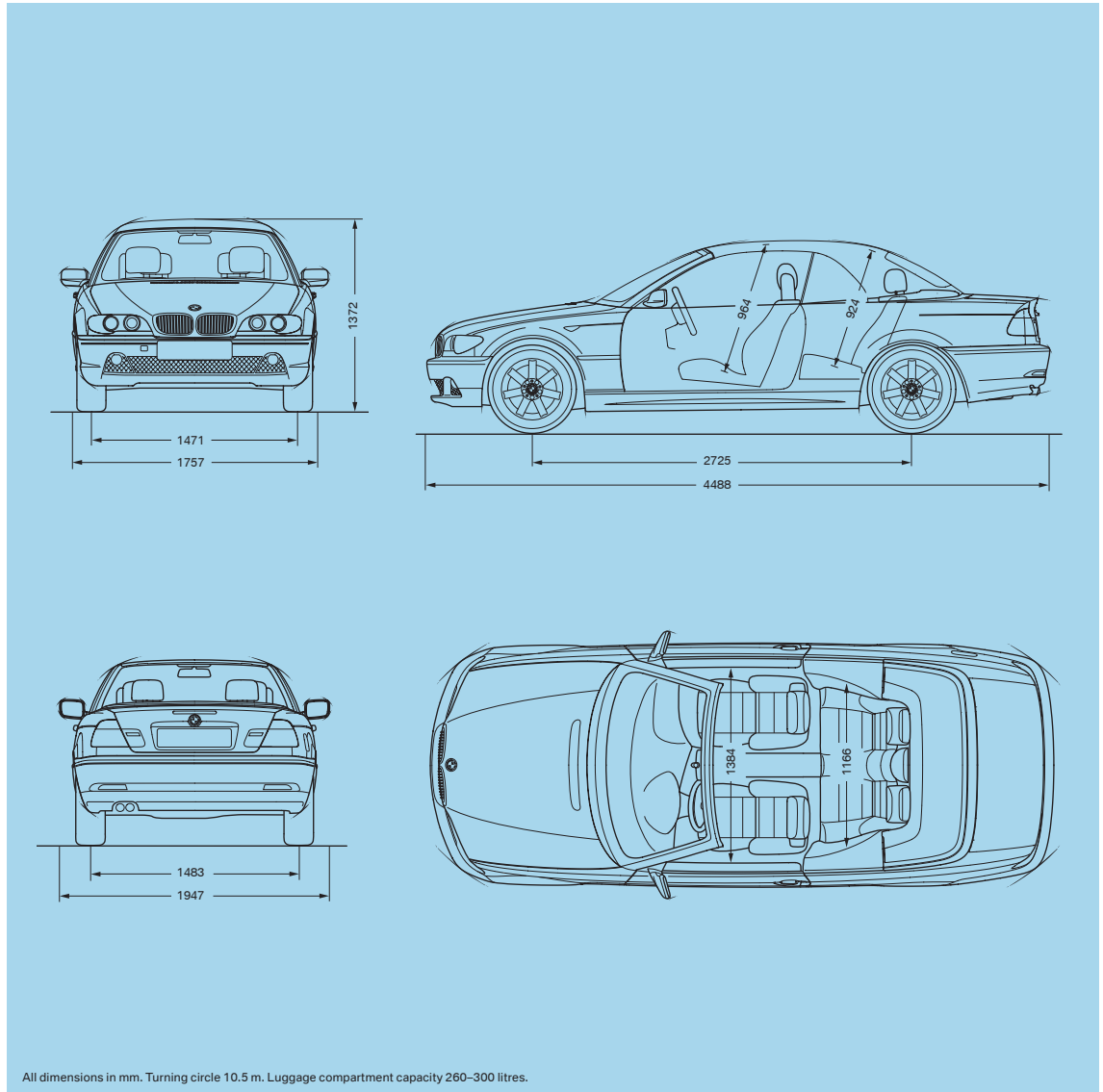
  

<b>Wheels</b>		<b>325Ci</b>	<b>330Ci</b>
Tire dimensions (standard)		205/55R-16 All-season	205/50R-17 All-season
Wheel dimensions (standard)		16 x 7.0	17 x 7.0
Material		Cast alloy	Cast alloy

<b>Fuel Consumption<sup>2</sup></b>		<b>325Ci</b>	<b>330Ci</b>
<b>Manual transmission/SMG</b>			
City	L/100 km	12.6	12.1
Highway	L/100 km	8.2	7.6
<b>Automatic transmission</b>			
City	L/100 km	12.7	12.8
Highway	L/100 km	8.2	8.5

## Technical Data



Figures in ( ) apply to vehicles with automatic transmission.

1 Top speed limited electronically.

2 NR Can-estimated figures are for comparison only. Your actual mileage will vary, depending upon speed and trip length. Actual highway consumption will most likely be lower.

Exclusive Canadian importer and distributor – BMW Canada Inc., Whitby, Ontario L1N 6K9. All illustrations and specifications are based on product information available at the time of printing. BMW reserves the right to revise specifications at any time, without notice. BMW may, subject to legal compliance, determine the Model Year designation of its vehicles. The Model Year designation on any particular model may be longer or shorter than 12 months. Some models may be shown with optional equipment and/or options not available in Canada. Further information can be obtained from your BMW Retailer.

© 2004 BMW Group, Munich, Germany. Not to be reproduced wholly or in part without written permission of BMW Group, Munich, Germany. "BMW", the BMW logo and "The Ultimate Driving Experience" are trademarks of the BMW Group, used under licence by BMW Canada Inc.