

**BMW 3 Series
Sedan**

320i
325i
330i
325xi
330xi



**The Ultimate
Driving Experience.™**



Passion comes in many different forms.
But few are more exciting.



It is hard to describe how power is developed.
But it's easy to understand.



**Intelligent cars don't have an IQ.
What they have is DSC.**



A cockpit should be governed not by fashion but by the needs of the driver.



Equipment



■ **Xenon headlights for low and high beam**, with luminous rings, including dynamic headlight range control for much better illumination of the road ahead in bad weather or poor visibility. These headlights also feature auto-levelling to adjust for varying passenger and cargo loads. (Not available on the 320i.)



■ **Headlight washer system** provides automatic cleaning in parallel with the windshield wipers when the headlights are on, thereby enhancing the headlight illumination of the road ahead in all weather conditions.



■ **The rain sensor** uses an infrared light to measure the amount of rain. When the wipers are in the "intermittent" mode, the rain sensor automatically adjusts the windshield wiping interval as needed. Includes automatic headlight function.



□ **Park Distance Control (PDC)** uses ultrasonic sensors in the rear bumper to help you judge the distance to other cars and unseen objects when parking. The beeping becomes faster as your bumper approaches the object, turning into a constant tone when the distance is less than 30 centimetres.



■ **Multi-function leather steering wheel** offers highly convenient operation, increased safety and an ergonomic design that makes it fit especially well in the driver's hands. (Optional on 320i.)



■ **Six-speed manual transmission** makes for extremely dynamic driving. Smooth and optimally synchronized, it boasts precise, short shift throws. The more tightly graded transmission and additional sixth gear make the engine even more responsive to your personal style of driving. (Available only on 330i/xi.)



□ **On-Board Navigation System** guides you conveniently and directly to your destination. In addition to providing driving instructions via voice, directional arrows or map display, the system will provide destination-specific information. Includes Canada/USA Navigation DVD.



■ **Automatic Climate Control** includes Automatic Air Recirculation (AAR), which is activated when a sensor detects certain pollutants in the outside air. Inside, cabin air continuously passes through a microfilter that removes pollen, dust and spores. (Not available on 320i.)



□ **Telephone and BMW Assist preparation** enhances driving safety even further with Bluetooth technology. A full Telephone and BMW Assist preparation includes one year of BMW Assist Safety and Security Telematics Services at no extra charge. With the BMW Assist Safety and Security Package, you get access to Emergency and Roadside Assistance Telematics Services.

Equipment



□ **Harman/Kardon Sound System** projects exceptional sound from 10 speakers and upgraded amplification, plus 2 subwoofers and vehicle-speed-sensitive equalization.



□ **Electric seats with driver memory** enable the driver and passenger to precisely adjust their seats to individual preferences. The positioning of the driver's mirror is also retained in the seat memory. (See page 53 for availability.)



□ **Lumbar support** is electronically adjustable and provides the driver and front passenger with a high degree of seating comfort and effective spinal relief. The continuously variable air cushion system helps you adopt an orthopaedically correct seating position.



■ **Interior auto-dimming mirror** increases driving safety and comfort for driving at night. Depending on the dazzle intensity, the interior mirror dims accordingly in order to minimize glare. When dazzling has ceased the mirrors return to the original degree of reflection.



□ **Through-loading system** with 2:1 split-folding rear seats, including ski bag.



■ **Vehicle Memory** allows you to program a full range of individual settings and features on your car, including the Follow-Me-Home function.

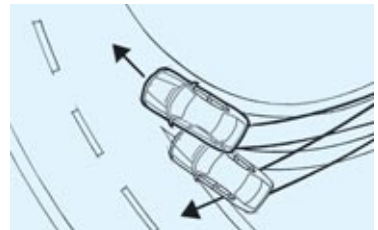
Key Memory allows you to set your preferred seat position of the electrically adjustable driver's seat. Furthermore, it is possible to set the automatic climate control to the interior temperature and air distribution to a specific key.



■ **Driver and front passenger airbags** protect your head and upper body in a frontal collision from hitting the steering wheel or instrument panel. Depending on the severity of the impact, the airbags are inflated via a two-stage gas generator (Impact-Dependent system); the front passenger airbag comes complete with a seat occupancy detector.



■ **Head Protection System (HPS)** for the driver and front passenger provides effective protection of your head and upper body in a collision from the side.



■ **Dynamic Stability Control (DSC)** recognizes the risk of the car skidding very early and stabilizes the car within milliseconds. Also includes **Dynamic Brake Control (DBC)**.

Standard Equipment | Optional Equipment

| Performance and Efficiency | 320i | 325i/325xi | 330i/330xi |
|---|------|------------|------------|
| 2.2-litre 168 hp dual overhead cam (DOHC) , 24-valve in-line 6-cylinder engine | ● | – | – |
| 2.5-litre 184 hp dual overhead cam (DOHC) , 24-valve in-line 6-cylinder engine | – | ● | – |
| 3.0-litre 225 hp dual overhead cam (DOHC) , 24-valve in-line 6-cylinder engine | – | – | ● |
| 5-speed manual transmission | ● | ● | – |
| 6-speed manual transmission | – | – | ● |
| 5-speed STEPTRONIC 3 mode (automatic/sport automatic/clutchless manual) transmission with Adaptive Transmission Control (ATC) | ○ | ○ | ○ |
| 6-speed SMG (Sequential Manual Gearbox) | – | – | ○/– |
| Double-VANOS steplessly variable valve timing | ● | ● | ● |
| Dual resonance intake system | ● | ● | ● |
| Handling, Ride and Braking | | | |
| Adaptive brakelights | ● | ● | ● |
| Disc brakes, 4-wheel inner vented anti-lock with electronic front/rear proportioning | ● | ● | ● |
| Engine-speed-sensitive, variable-assist power steering | ● | ● | ● |
| Hill Descent Control (HDC) enables the car to take steep downhill gradients safely by automatically limiting the speed of the car to approximately 8 km/h | – | –/● | –/● |
| Multi-link rear suspension with cast-aluminum upper transverse arms | ● | ● | ● |
| Rollover Protection System | ● | ● | ● |
| Sport suspension calibration | ○ | ○/– | ●/– |
| Strut-type front suspension with forged aluminum lower arms, hydraulic cushions | ● | ● | ● |
| Twin-tube gas-pressure shock absorbers | ● | ● | ● |
| Exterior | | | |
| Body-colour finish trim on front bumper air inlet | – | – | ● |
| Chrome window surround | – | – | ● |
| Foglights , halogen free-form | ○ | ● | ● |
| High-pressure headlight cleaning system | ○ | ● | ● |
| Metallic paint | ○ | ○ | ○ |
| Speed-sensitive windshield wipers | ● | ● | ● |
| Tires | | | |
| – Steel wheel with cover (with all-season tires) -16 x 7.0, 205/55R-16 | ● | – | – |
| – Star Spoke alloy wheels (with all-season tires) -Style 45, 16 x 7.0, 205/55R-16 | ○ | ● | – |
| – Star Spoke alloy wheels (with all-season tires) -Style 137, 17 x 7.0, 205/50R-17 | – | – | ● |
| Xenon headlights for low and high beam , including dynamic headlight range control | – | ● | ● |
| Sound System | | | |
| Anti-theft AM/FM stereo/CD sound system with 6 speakers, Radio Data System (RDS) and 3-channel FM diversity antenna system, pre-wired for CD changer | ● | ● | ● |
| Harman/Kardon Sound System , projects exceptional sound from 10 speakers and upgraded amplification, plus 2 subwoofers and vehicle-speed-sensitive equalization. | – | ○ | ○ |
| In-dash CD player , with MP3 capability | ● | ● | ● |

Optional Equipment | Standard Equipment

| Interior Seating and Trim | 320i | 325i/325xi | 330i/330xi |
|---|------|------------|------------|
| 3-stage, thermostatically controlled heated front seats | ○ | ○ | ● |
| 4-spoke leather-wrapped steering wheel | ● | ● | ● |
| 6-way adjustable front seats | ● | ● | ● |
| 10-way adjustable sport seats | ○ | ○ | ○ |
| Front centre armrest with storage compartment | ● | ● | ● |
| Front seatback storage nets | – | ● | ● |
| Interior Trim | | | |
| – Myrtle Wood | ○ | ○ | ○ |
| – Titanium | ● | ● | ● |
| Lumbar support, 4-way electrically adjustable | – | ○ | ○ |
| Multi-function steering wheel with fingertip cruise, audio and accessory phone controls | ○ | ● | ● |
| Upholstery | | | |
| – Leatherette | ● | ● | ● |
| – Montana Leather | – | ○ | ○ |
| Comfort and Convenience | | | |
| 2-way power glass sunroof with one-touch operation, sliding interior sunshade and wind deflector | ○ | ○ | ● |
| Air conditioning, manual, with microfilter | ● | – | – |
| Alarm and CD changer prewiring | ● | ● | ● |
| Automatic Climate Control and air recirculation, incl. microfilter | – | ● | ● |
| Auto-dimming interior rearview mirror | ○ | ● | ● |
| BMW Ambiance lighting | ● | ● | ● |
| Electric interior trunk release | – | ● | ● |
| Electric sunshade for rear window | – | – | ○ |
| Fully finished trunk with drop-down tool kit | ● | ● | ● |
| Keyless entry with multi-function remote control, including two-step unlocking and remote trunk release | ● | ● | ● |
| Locking illuminated glovebox with rechargeable take-out flashlight | ● | ● | ● |
| Park Distance Control (PDC), rear | – | ○ | ○ |
| Power front and rear windows; anti-trap with "one touch" feature up/down operation | ● | ● | ● |
| Rain sensor with automatic headlight function | ● | ● | ● |
| Split fold-down rear seats with centre armrest (includes ski bag) | ○ | ○ | ○ |
| Tilt/telescopic steering wheel | ● | ● | ● |
| Vehicle & Key Memory | ● | ● | ● |

Standard Equipment | Optional Equipment

| Instrumentation and Controls | 320i | 325i/325xi | 330i/330xi |
|---|------|------------|------------|
| Aluminum-finish ringed gauges | - | - | ● |
| Check Control vehicle monitor system with pictogram | ● | ● | ● |
| On-board computer, 4-functions | ○ | ● | ● |
| Service Interval Indicator, with km-to-service readout | ● | ● | ● |
| Telephone and BMW Assist preparation with Bluetooth technology, includes one year of BMW Assist Safety and Security Services | ○ | ○ | ○ |
| Safety and Security | | | |
| Anti-lock Braking System (ABS) incl. Cornering Brake Control (CBC) | ● | ● | ● |
| Automatic fuel cut-off, triggered by airbag deployment | ● | ● | ● |
| Automatic-Locking Retractors (ALR) on all passenger safety belts (for installation of child restraint seats) | ● | ● | ● |
| Automatic Stability Control + Traction (ASC+T) | ● | ● | ● |
| Battery Safety Terminal (BST) | ● | ● | ● |
| Central locking system with centre console switch (leaves gas filler door unlocked), double-lock feature and 2-step unlocking | ● | ● | ● |
| Coded Driveaway Protection | ● | ● | ● |
| Crash sensor, automatically turns on hazard lights, interior lights and unlocks doors | ● | ● | ● |
| Driver and front passenger Impact-Dependent (ID) airbag system; seat occupancy detector for front passenger airbag | ● | ● | ● |
| Dynamic Stability Control (DSC) incl. DBC | ● | ● | ● |
| Full-use spare alloy wheel and tire | ○ | ● | ● |
| Head Protection System (HPS) | ● | ● | ● |
| Height-adjustable front safety belts with automatic tensioners and force limiters | ● | ● | ● |
| Interlocking door anchoring system to help protect against door intrusion in side impacts | ● | ● | ● |
| Rear centre 3-point safety belt and headrest | ● | ● | ● |
| Rear side airbags* | ○ | ○ | ○ |
| Side airbags for driver and front passenger | ● | ● | ● |

* Available as a special order

● Standard ○ Optional - Not Available

Optional Equipment | Standard Equipment

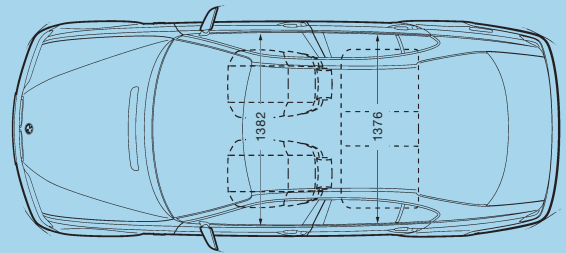
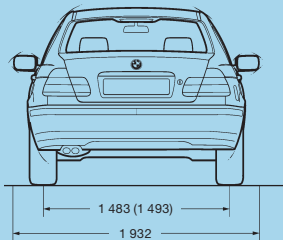
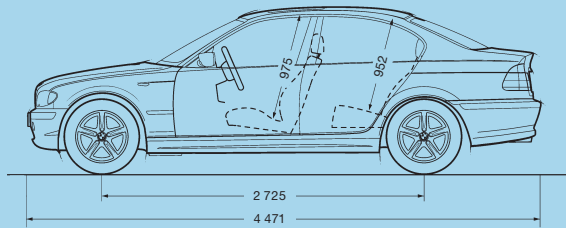
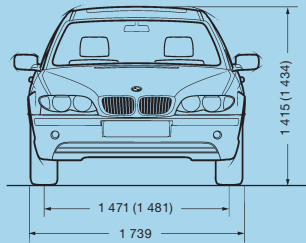
| All-Wheel Drive Sport Package | 320i | 325i/325xi | 330i/330xi |
|---|------|------------|------------|
| 3-spoke leather sport steering wheel; Star Spoke alloy wheels (with all-season tires) -Style 137, 17 x 7.0, 205/50R-17; Sport seats | - | -/O | - |
| 3-spoke leather sport steering wheel; Parallel Spoke alloy wheels -Style 98, 17 x 7.0, 205/50 R-17 (with all-season run-flat tires, incl. space-saver spare tire); Sport seats; Tire Pressure Warning | - | - | -/O |
| All-Wheel Drive M Executive Package | | | |
| Electric, heated sport seats with driver memory; Glass sunroof; M Aerodynamic Package; M Multi-function leather sport steering wheel; Star Spoke alloy wheels (with all-season tires) - Style 137, 17 X 8.0, 205/50R-17 | - | -/O | - |
| Electric, sport seats with driver memory; Glass sunroof; Lumbar support; M Aerodynamic Package; M Multi-function leather sport steering wheel; Montana Leather; Parallel Spoke alloy wheels (with all-season tires) - Style 98, 17 X 7.0 205/50R-17, Tire Pressure Warning, Through-load with ski bag | - | - | -/O |
| M Executive Package | | | |
| Electric, heated sport seats with driver memory; Glass sunroof; M Aerodynamic Package; M Multi-function leather sport steering wheel; Star Spoke alloy wheels (with performance tires) - Style 119, 17 X 8.0, 225/50R-17 | - | O/- | - |
| Electric, sport seats with driver memory; Glass sunroof; Lumbar support; M Aerodynamic Package; M Multi-function leather sport steering wheel; M Double Spoke alloy wheels (with performance tires) - Style 68, 17 X 7.5 front, 225/45ZR-17, 17 X 8.5 rear, 245/40ZR-17; Sport Suspension; Through load with ski bag | - | - | O/- |
| M Performance Edition¹ | | | |
| Anthracite roof liner; Black Aluminum Cube trim; High-gloss Shadow Line; M Aerodynamic Package; M Multi-function leather sport steering wheel; Sport seats; Sport Suspension; M Double Spoke alloy wheels (with performance tires) -Style 135M, 18 x 8.0 front, 225/40 R-18, 18 x 8.5 rear, 255/35 R-18; 235 HP @ 5,900 rpm; 222 lb-ft @ 3,500; Revised engine management; Shorter rear axle ratio; Modified camshaft; 0-100 km/h in 6.4 seconds | - | - | O/- |
| Silver Aluminum Cube trim | - | - | O |
| Navigation Package | | | |
| BMW On-board Navigation System; Canada/USA Navigation DVD | - | O | O |
| Premium Packages | | | |
| Glass sunroof; Heated front seats; On-board computer | O | - | - |
| Electric seats with driver memory; Glass sunroof; Harman/Kardon Sound System; Heated front seats | - | O | - |
| Electric seats with driver memory; Harman/Kardon Sound System; Lumbar support; Montana Leather; Through-load with ski bag | - | - | O |
| Sport Packages | | | |
| 3-spoke leather sport steering wheel; V Spoke alloy wheels (with performance tires) - Style 136, 16 x 7.0, 225/50R-16 ; Full-size spare tire; Sport seats; Sport suspension | O | - | - |
| 3-spoke leather sport steering wheel; Star Spoke alloy wheels (with performance tires) - Style 119, 17 x 8.0, 225/45R-17; Sport seats; Sport suspension | - | O/- | - |
| 3-spoke leather sport steering wheel; M Parallel Spoke alloy wheels (with performance tires) -Style 68M, 17 x 8.0, 225/45R-17; Sport seats | - | - | O/- |

¹ See your local BMW Retailer for details.

| Weight | | 320i | 325i (325xi) | 330i (330xi) |
|---------------------------------|-----------------|-------------------------|---------------------------|---------------------------------|
| Unladen | | | | |
| Manual transmission | kg | 1425 | 1460 (1570) | 1490 (1580) |
| Automatic transmission | kg | 1460 | 1500 (1600) | 1525 (1605) |
| Weight distribution, front/rear | | | | |
| Manual transmission | % | 51.2/48.8 | 50.3/49.7 (52.6/47.4) | 50.1/49.9 (52.2/47.8) |
| Automatic transmission | % | 51.6/48.4 | 50.9/49.1 (53.0/47.0) | 50.6/49.4 (52.5/47.5) |
| Max. gross weight | | | | |
| Manual transmission | kg | 1905 | 1940 (2050) | 1970 (2060) |
| Automatic transmission | kg | 1940 | 1980 (2080) | 2005 (2085) |
| Max. payload | kg | 480 | 480 | 480 |
| Max. axle load, front/rear | kg | 895/1070 | 900/1100 (990/1120) | 910/1120 (980/1130) |
| Max. roof load | kg | 75 | 75 | 75 |
| Engine | | | | |
| Litre/type (with Double-VANOS) | | 2.2/DOHC in-line 6, 24v | 2.5/DOHC in-line 6, 24v | 3.0/DOHC in-line 6, 24v |
| Displacement | cm ³ | 2171 | 2494 | 2979 |
| Bore/Stroke | mm | 80.0/72.0 | 84.0 x 75.0 | 84.0 x 89.6 |
| Nominal output/rpm | hp | 168/6100 | 184/6000 | 225/5900 |
| Max torque/rpm | lb-ft | 155/3500 | 175/3500 | 214/3500 |
| Compression ratio | :1 | 10.8 | 10.5 | 10.2 |
| Fuel grade | | Premium unleaded | Premium unleaded | Premium unleaded |
| Transmission | | | | |
| Drive configuration | | Rear | Rear/All-Wheel | Rear/All-Wheel |
| Manual gear ratios | | | | |
| I/II | :1 | 4.23/2.52 | 4.23/2.52 (4.21/2.49) | 4.35/2.50 (4.35/2.50) |
| III/IV | :1 | 1.66/1.22 | 1.66/1.22 (1.66/1.24) | 1.66/1.23 (1.66/1.23) |
| V/VI/R | :1 | 1.00/-/4.04 | 1.00/-/4.04 (1.00/-/3.85) | 1.00/0.85/3.93 (1.00/1.00/3.93) |
| Final drive ratio | :1 | 3.38 | 3.15 (3.23) | 2.93 (3.07) |
| Automatic gear ratios | | | | |
| I/II | :1 | 3.67/2.00 | 3.67/2.00 (3.45/2.21) | 3.67/2.00 (3.42/2.22) |
| III/IV | :1 | 1.41/1.00 | 1.41/1.00 (1.59/1.00) | 1.41/1.00 (1.60/1.00) |
| V/R | :1 | 0.74/4.10 | 0.74/4.10 (0.76/3.17) | 0.74/3.17 (0.75/3.03) |
| Final drive ratio | :1 | 3.91 | 3.46 (3.46) | 3.38 (3.46) |
| Brakes | | | | |
| Braking system | | 4-channel ABS | 4-channel ABS | 4-channel ABS |
| Brake type, front and rear | | ventilated disc | ventilated disc | ventilated disc |
| Brake diameter, front/rear | mm | 286/276 | 300/294 | 325/320 |
| Performance | | | | |
| Drag coefficient | C _d | 0.31 | 0.31 | 0.31 |
| Top speed ¹ | km/h | 206 | 206 | 206 |
| Acceleration 0–100 km/h, | | | | |
| Manual transmission | sec | 8.7 | 7.6/8.2 | 6.8/7.5 |
| Automatic transmission | sec | 9.8 | 8.6/9.4 | 7.4/7.9 |

| Wheels | | 320i | 325i (325xi) | 330i (330xi) |
|------------------|----------|------------------------|-----------------------|-----------------------|
| Tire dimensions | standard | 205/55R-16 all-season | 205/55R-16 all-season | 205/50R-17 all-season |
| Wheel dimensions | standard | 16 x 7 | 16 x 7 | 16 x 7 |
| Material | | Steel wheel with cover | Cast alloy | Cast alloy |

| Fuel Consumption ³ | | | | |
|-------------------------------|------------|------|-------------|-------------|
| Manual transmission | | | | |
| City | L/100 km/h | 11.3 | 11.7 (12.1) | 11.7 (11.8) |
| Highway | L/100 km/h | 7.2 | 7.4 (8.0) | 7.2 (7.4) |
| Automatic transmission | | | | |
| City | L/100 km/h | 11.6 | 12.3 (12.2) | 12.2 (13.0) |
| Highway | L/100 km/h | 7.4 | 8.0 (8.4) | 8.0 (8.6) |
| Tank capacity, approx | L | 63 | 63 | 63 |



Illustrations above: all dimensions in mm. Figures in () apply to 320i, if different. Please see your BMW Retailer for 325xi and 330xi dimensions. Luggage compartment capacity 440 litres. Turning circle 10.5 m on 320i, 325i and 330i; 10.9 m on 325xi and 330 xi.

- 1 Top speed limited electronically.
- 2 BMW AG test results. Actual acceleration results may vary, depending on specification of vehicle, road and environmental conditions, testing procedures and driving style. These results should be used for comparison only, and verification should not be attempted on public roads. **BMW urges you to obey all posted speed laws and always wear safety belts.**
- 3 NR Can-estimated figures are for comparison purposes only. Your actual mileage will vary, depending on speed, driving habits, trip length and driving conditions; actual mileage will most likely be lower.

Exclusive Canadian importer and distributor - BMW Canada Inc., Whitby, Ontario L1N 6K9. All specifications, standard features, accessories, equipment, options, fabrics and colours are based on product information available at the time of printing. BMW reserves the right to revise specifications at any time, without notice. Illustrations are representative only. BMW may determine the Model Year designation of its vehicles. Models may be shown with features, accessories, equipment, options, fabrics and/or colours not available in Canada, or available only at extra cost, or available only on particular models. While BMW takes care to ensure that the information contained in this brochure is accurate, it cannot guarantee complete accuracy.

BMW is not responsible for errors or omissions contained in this brochure. Further information about the products shown in this brochure can be obtained from your authorized BMW Retailer and at www.BMW.ca. Printed 06/2004.

©2004 BMW Group, Munich, Germany. Not to be reproduced wholly or in part without written permission of BMW Group, Germany. "BMW", "SMG"; the BMW logo, the BMW Driver Training logo, "The Ultimate Driving Experience" and all model designations are registered trademarks of the BMW Group, used under licence by BMW Canada Inc.