

BMW
3 Series Touring



The Ultimate
Driving Experience.™

325i
325xi



How much freedom would you like to enjoy?
The BMW 3 Series Touring.



Just one thing is even more important than our designers' dreams: your wishes.





So you're always looking for something special. In that case,
take a look into the engine compartment.



A BMW is impressive outside.
And perfect inside.

Equipment



■ **Xenon headlights for low and high beam**, with luminous rings, including dynamic headlight range control for much better illumination of the road ahead in bad weather or poor visibility. These headlights also feature auto-leveling to adjust for varying passenger and cargo loads.



■ **Headlight washer system** provides automatic cleaning in parallel with the windshield wipers when the headlights are on, thereby enhancing the headlight illumination of the road ahead in all weather conditions.



■ **Foglights** in halogen free-form technology are integrated into the front air dam, and ensure additional visibility and safety in bad weather or poor visibility.



□ **Park Distance Control (PDC)** uses ultrasonic sensors in the rear bumper to help you judge the distance to other cars and unseen objects when parking. The beeping becomes faster as your bumper approaches the object, turning into a constant tone when the distance is less than 30 centimetres.



■ **The rain sensor** uses an infrared light to measure the amount of rain. When the wipers are in the "intermittent" mode, the rain sensor automatically adjusts the windshield wiping interval as needed. Includes automatic headlight function.



■ **Rear window** opens separately, offering convenient access to the luggage area.



■ **Split-folding rear seats**, folding up and down in 2:1 split for variable layout of the luggage compartment when transporting bulky objects (bicycles, skis, etc.).



■ **Multi-function leather steering wheel** offers highly convenient operation, increased safety and an ergonomic design that makes it fit especially well in the driver's hands.



□ **On-Board Navigation System** guides you conveniently and directly to your destination. In addition to providing driving instructions via voice, directional arrows or map display, the system will provide destination-specific information. Includes Canada/USA Navigation DVD.

Equipment



■ **Automatic Climate Control** includes Automatic Air Recirculation (AAR), which is activated when a sensor detects certain pollutants in the outside air. Inside, cabin air continuously passes through a microfilter that removes pollen, dust and spores.



□ **Harman/Kardon Sound System** projects exceptional sound from upgraded speakers and amplification, plus a subwoofer and vehicle-speed-sensitive equalization.



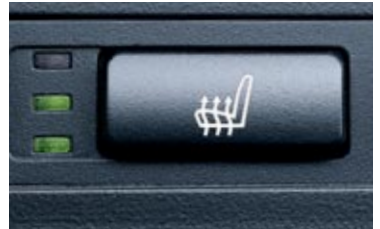
□ **Telephone and BMW Assist preparation** enhances driving safety even further with Bluetooth technology. A full Telephone and BMW Assist preparation includes one year of BMW Assist Safety and Security Telematics Services at no extra charge. With the BMW Assist Safety and Security Package, you get access to Emergency and Roadside Assistance Telematics Services.



□ **Lumbar support** is electronically adjustable and provides the driver and front passenger with a high degree of seating comfort and effective spinal relief. The continuously variable air cushion system helps you adopt an orthopaedically correct seating position.



□ **Electric seats with driver memory** enable the driver and passenger to precisely adjust their seats to individual preferences. The position of the driver's mirror is also retained in the seat memory. (Available with Premium and M Executive Packages, see page 53 for details)



□ **Seat heating** is a welcome feature in cooler weather. With the touch of a button, you can individually select from three heat settings.

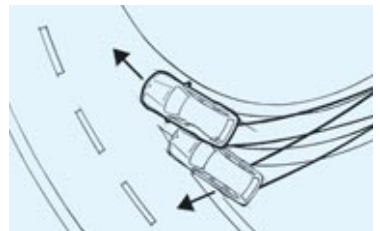


■ **Vehicle Memory** allows you to program a full range of individual settings and features on your car, including the Follow-Me-Home function.

Key Memory allows you to set your preferred seat position of the electrically adjustable driver's seat. Furthermore, it is possible to set the automatic climate control to the interior temperature and air distribution to a specific key.



■ **Head Protection System (HPS)** for the driver and front passenger provides effective protection of your head and upper body in a collision from the side.



■ **Dynamic Stability Control (DSC)** recognizes the risk of the car skidding very early and stabilizes the car within milliseconds. Also includes **Dynamic Brake Control (DBC)**.

Standard Equipment | Optional Equipment

Safety	325i	325xi
Airbags:		
– Driver and front passenger Impact-Dependent (ID) airbag system; seat occupancy detector for front passenger airbag	■	■
– Head Protection System (HPS) for driver and front passenger	■	■
– Side airbags for driver and front passenger	■	■
– Rear side airbags *	□	□
Anti-Lock Braking System (ABS) incl. Cornering Brake Control (CBC)	■	■
Automatic Stability Control + Traction (ASC+T)	■	■
Brakes:		
– Adaptive Brakelights	■	■
– Disc brakes, 4-wheel inner-vented anti-lock with electronic front/rear proportioning	■	■
– Third brakelight, integrated into roof spoiler, extra wide	■	■
Centre lock switch	■	■
Central locking system with centre console switch (leaves gas filler door unlocked), double-lock feature and 2-step unlocking	■	■
Crash sensor , automatically turns on hazard lights, interior lights and unlocks doors	■	■
Dynamic Stability Control (DSC) incl. DBC	■	■
Electronic Brake-force Distribution (EBD)	■	■
Foglights , halogen free-form	■	■
High pressure headlight cleaning system	■	■
Hill Descent Control (HDC) enables the car to take steep downhill gradients safely by automatically limiting the speed of the car to approximately 8 km/h	–	■
Park Distance Control (PDC) , rear	□	□
Parking protection all round by wrap-around plastic bumpers and side rubbing strips	■	■
Power steering with crash-optimized safety steering column	■	■
Rain sensor with automatic headlight function	■	■
Battery Safety Terminal (BST)	■	■
Safety bodyshell:		
– Deformation zones front and rear, aluminum door reinforcement, bumpers regenerating to their original shape after impact at up to 4 km/h	■	■
Seat belts:		
– Ergonomic belt system at the rear with three-point belts on all seats	■	■
– Inertia-reel seat belts at the front with pyrotechnical belt latch tensioner, belt force limiter and belt restrainer	■	■
– Manual belt height adjustment on B-pillar	■	■
Side impact protection door reinforcements	■	■
Engine	325i	325xi
2.5-litre 184 hp dual overhead cam (DOHC) , 24-valve in-line 6-cylinder engine	■	■
Dual resonance intake system	■	■
Double-VANOS steplessly variable valve timing	■	■
Electronically controlled engine cooling	■	■
Engine-speed-sensitive, variable-assist power steering	■	■
Fully electronic "drive-by-wire" throttle system	■	■
On-board diagnosis system	■	■
Three-way catalytic converter , heated oxygen sensor, activated carbon filter, controlled tank purge	■	■

Standard Equipment | Optional Equipment

	325i	325xi
Transmission and Suspension		
5-speed manual transmission	■	■
All-wheel drive	-	■
Automatic transmission:		
- 5-speed STEPTRONIC 3 mode (automatic/sport automatic/clutchless manual) transmission with Adaptive Transmission Control (ATC)	□	□
Front and rear anti-roll (stabilizer) bars	■	■
Self-Adjusting Clutch (SAC)	■	■
Sport suspension calibration	■	■
Strut-type front suspension with forged aluminum lower arms, hydraulic cushions	■	■
Twin-tube gas-pressure shock absorbers	■	■
Interior Features		
2-way power glass sunroof, with one-touch operation, sliding interior sunshade and wind deflector	□	□
4-spoke multi-function steering wheel with fingertip cruise, audio and accessory phone controls	■	■
Analog-face instruments with illumination from behind	■	■
Automatic Climate Control and air recirculation, incl. microfilter	■	■
Auto-dimming interior rearview mirror	■	■
BMW Ambiance lighting	■	■
Centre armrest at the rear with storage box and two cupholders	■	■
Check Control vehicle monitor system with pictogram	■	■
Courtesy lights package with footwell illumination at the front, switchable reading lights at the rear and illuminated vanity mirrors	■	■
Front centre armrest with storage compartment	■	■
Front seatback storage nets	■	■
Full-size spare wheel in luggage compartment beneath floor	■	■
Front headrests, adjustable for height and angle	■	■
Interior trim:		
- Myrtle Wood	□	□
- Titanium	■	■
Latching points, four, and two cargo holders in luggage compartment	■	■
"LIGHTS ON?" warning	■	■
Locking illuminated glovebox with rechargeable takeout flashlight	■	■
Luggage compartment cover incl. partition net	■	■
Luggage compartment with all-round textile lining	■	■
On-board computer, 4-functions	■	■
Power front and rear windows; anti-trap with "one touch" feature up/down operation	■	■
Power socket (12 V) in luggage compartment	■	■
Prewiring for integrated universal garage door opener	■	■
Reading lights, switchable, at the rear	■	■
Rear headrests (3), outer positions adjustable	■	■

Standard Equipment | Optional Equipment

Interior Features	325i	325xi
Seats/seat comfort:		
- 3-stage, thermostatically controlled heated front seats	<input type="checkbox"/>	<input type="checkbox"/>
- 6-way adjustable front seats	<input checked="" type="checkbox"/>	<input checked="" type="checkbox"/>
- Lumbar support, 4-way electrically adjustable	<input type="checkbox"/>	<input type="checkbox"/>
- Split fold-down rear seats with centre armrest	<input checked="" type="checkbox"/>	<input checked="" type="checkbox"/>
Service Interval Indicator with km-to-service readout	<input checked="" type="checkbox"/>	<input checked="" type="checkbox"/>
Ski bag (not available with Leatherette upholstery)	<input type="checkbox"/>	<input type="checkbox"/>
Telephone and BMW Assist preparation with Bluetooth technology, includes one year of BMW Assist Safety and Security Services ¹	<input type="checkbox"/>	<input type="checkbox"/>
Tilt/telescopic steering wheel	<input checked="" type="checkbox"/>	<input checked="" type="checkbox"/>
Toolkit beneath luggage compartment floor	<input checked="" type="checkbox"/>	<input checked="" type="checkbox"/>
Upholstery:		
- Leatherette	<input checked="" type="checkbox"/>	<input checked="" type="checkbox"/>
- Montana Leather	<input type="checkbox"/>	<input type="checkbox"/>
Vanity mirrors with slide cover for driver and front passenger	<input checked="" type="checkbox"/>	<input checked="" type="checkbox"/>
Vehicle/Key Memory with Follow-Me-Home function	<input checked="" type="checkbox"/>	<input checked="" type="checkbox"/>
Sound System		
Anti-theft AM/FM stereo system with 6 speakers, Radio Data System (RDS) and 3-channel FM diversity antenna system, pre-wired for CD Changer	<input checked="" type="checkbox"/>	<input checked="" type="checkbox"/>
Harman/Kardon Sound System projects exceptional sound from upgraded speakers and amplification, plus a subwoofer and vehicle-speed-sensitive equalization	<input type="checkbox"/>	<input type="checkbox"/>
In-dash CD player with MP3 capacity	<input checked="" type="checkbox"/>	<input checked="" type="checkbox"/>
Exterior Features		
Bumpers and exterior mirrors in body colour	<input checked="" type="checkbox"/>	<input checked="" type="checkbox"/>
Chrome window surround	<input checked="" type="checkbox"/>	<input checked="" type="checkbox"/>
Engine compartment and luggage compartment lids supported by gas pressure springs	<input checked="" type="checkbox"/>	<input checked="" type="checkbox"/>
Exterior mirrors , electrically adjustable	<input checked="" type="checkbox"/>	<input checked="" type="checkbox"/>
Door handles in body colour	<input checked="" type="checkbox"/>	<input checked="" type="checkbox"/>
Heated windshield washer jets and exterior mirrors	<input checked="" type="checkbox"/>	<input checked="" type="checkbox"/>
Metallic paint	<input type="checkbox"/>	<input type="checkbox"/>
Rear window opening separately	<input checked="" type="checkbox"/>	<input checked="" type="checkbox"/>
Remote control key , with automatically recharging battery	<input checked="" type="checkbox"/>	<input checked="" type="checkbox"/>
Roof rails plus rear window wiper & washer	<input checked="" type="checkbox"/>	<input checked="" type="checkbox"/>
Rustproofing , all-round, with partial hot galvanization, phosphating and cathodic dip bath, preservation of hollow cavities, underfloor protection	<input checked="" type="checkbox"/>	<input checked="" type="checkbox"/>
Twin chrome exhaust tips	-	<input checked="" type="checkbox"/>
Wheel arches , front, with plastic inserts	<input checked="" type="checkbox"/>	<input checked="" type="checkbox"/>
Wheels:		
- Star Spoke alloy wheels (with all-season tires) -Style 45, 16 x 7.0, 205/55R-16	<input checked="" type="checkbox"/>	<input checked="" type="checkbox"/>
Windshield with green stripe	<input type="checkbox"/>	<input type="checkbox"/>
Xenon headlights for low and high beam , including dynamic headlight range control	<input checked="" type="checkbox"/>	<input checked="" type="checkbox"/>

¹ See your local BMW Retailer for complete details.

Standard Equipment | Optional Equipment

	325i	325xi
All-Wheel-Drive M Executive Package		
Electric heated sport seats with driver memory; Glass sunroof; High-gloss Shadow Line; M Multi-function leather sport steering wheel; Star Spoke alloy wheels (with performance tires) - Style 137, 17 X 7.0, 205/50R-17	-	<input type="checkbox"/>
All-Wheel-Drive Sport Package		
3-spoke leather sport steering wheel; Star Spoke alloy wheels (with all-season tires) -Style 137, 17 x 7.0, 205/50R-17; Sport seats	-	<input type="checkbox"/>
M Executive Package		
Electric heated sport seats with driver memory; Glass sunroof; High-gloss Shadow Line; M Multi-function leather sport steering wheel; Sport Suspension; Star Spoke alloy wheels (with performance tires) - Style 44, 17 X 8.0, 225/45R-17	<input type="checkbox"/>	-
Navigation Package¹		
BMW On-board Navigation system; Canada/USA Navigation DVD	<input type="checkbox"/>	<input type="checkbox"/>
Premium Package		
Electric seats with driver memory; Glass sunroof; Harman/Kardon Sound System; Heated front seats	<input type="checkbox"/>	<input type="checkbox"/>
Sport Package		
3-spoke leather sport steering wheel; Star Spoke alloy wheels (with performance tires) -Style 119, 17 x 8.0, 225/45R-17; Sport seats; Sport suspension	<input type="checkbox"/>	-

¹See your local BMW Retailer for complete details.

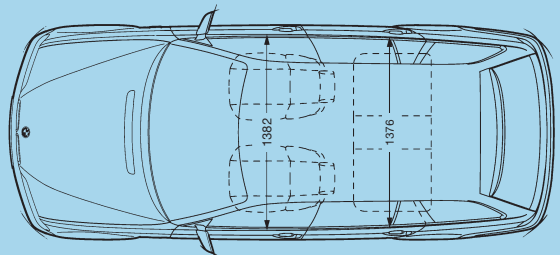
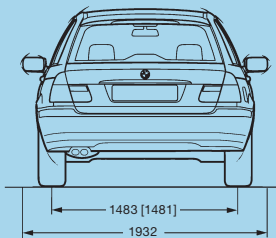
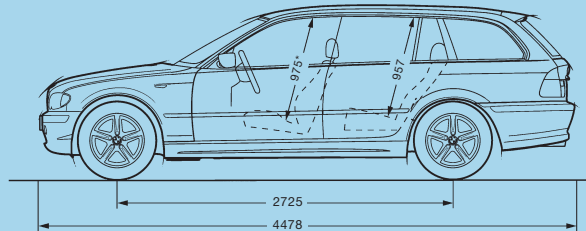
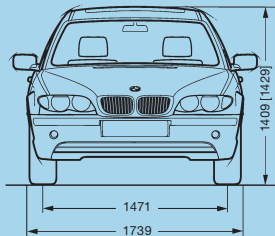
Technical | Data

Weight		325i	325xi
Unladen	kg	1525 [1565]	1630 [1645]
Weight distribution, front/rear			
Manual transmission	%	47.7/52.3	50.1/49.9
Automatic transmission	%	48.4/51.6	50.0/50.0
Max. permissible	kg	2045 [2085]	2130 [2145]
Permitted load	kg	520	500
Permitted axle load, front/rear	kg	900/1210	970/1205
Permitted roof load	kg	75	75
Permitted trailer load, unbraked ¹	kg	720	730
Permitted trailer load, braked, max. 12 % gradient ¹	kg	1600	1700
Permitted trailer load, braked, max. 8 % gradient ¹	kg	1700	1800
Permitted towbar download	kg	75	75
Engine		325i	325xi
Litre/type (with Double-VANOS)		2.5/in-line 6	2.5/in-line 6
Capacity	cc	2494	2494
Bore/Stroke	mm	84.0/75.0	84.0/75.0
Max. output	hp/rpm	184/6000	184/6000
Max. torque	lb-ft/rpm	175/3500	175/3500
Compression ratio	:1	10.5	10.5
Fuel grade		Premium Unleaded	Premium Unleaded
Transmission		325i	325xi
Drive configuration		Rear	All-Wheel
Transmission type		5-M/5A	5-M/5A
Standard transmission ratios	I/II :1	4.23/2.52 [3.67/2.0]	4.21/2.49 [3.45/2.21]
	III/IV :1	1.66/1.22 [1.41/1.0]	1.66/1.24 [1.59/1.0]
	V/R :1	1.00/4.04 [.74/3.17]	1.00/3.85 [0.76/3.17]
Final drive ratio	:1	3.46 [3.46]	3.23 [3.46]
Brakes		325i	325xi
Braking system		4-channel ABS	4-channel ABS
Brake type, front and rear		ventilated disc	ventilated disc
Brake diameter, front/rear	mm	300/294	300/294
Performance		325i	325xi
Drag coefficient	C _d	0.32	0.32
Top speed ²	km/h	206	206
Acceleration 0–100 km/h	sec	7.9 [9.0]	8.4 [9.6]

Technical I Data

Wheels		325i	325xi
Tire dimensions		205/55 R-16 W	205/55 R-16 W
Wheel dimensions		16 x 7	16 x 7
Material		Light alloy	Light alloy

Fuel Consumption ³		325i	325xi
City	L/100 km	11.7 [12.3]	12.4 [12.2]
Highway	L/100 km	7.4 [8.0]	8.2 [8.4]
Tank capacity, approx.	ltr	63	63



* Head room measurement with sunroof is 940 mm.
 All dimensions in millimetres. Dimensions in [] apply to All-wheel drive.
 Luggage compartment capacity 435–1617 litres (15.2–47.1 cu ft) (to VDA standard).
 Turning Circle 10.5 m on 325i, 10.9 m on 325xi

Figures in [] apply to vehicles with five-speed automatic.
 1 The overall weight of the trailer may not exceed the maximum permissible trailer load plus the maximum permissible towbar download.
 2 Top speed limited electronically.
 3 NR Can - estimated figures are for comparison purposes only. Your actual mileage will vary, depending on speed, driving habits, trip length and driving conditions; actual mileage will most likely be lower.

Sole Canadian Importer: BMW Canada Inc., Whitby, Ontario L1N 6K9. All illustrations and specifications contained in this piece are based on the latest product information available at the time of printing. BMW reserves the right to make changes at any time, without notice, in colours, materials, equipment, specifications and models. BMW may, subject to legal requirements, determine the Model Year designation of its vehicles. The Model Year designation on any particular model may be longer or shorter than 12 months. Some

vehicles pictured may contain non-Canadian equipment. Some models may be shown with optional equipment.

Further information can be obtained from your BMW Retailer. © 2004 BMW AG, Munich, Germany. Not to be reproduced wholly or in part without the written permission of BMW AG, Munich. © BMW Canada Inc. "BMW," the BMW logo and "The Ultimate Driving Experience" are trademarks of BMW AG, used under licence by BMW Canada Inc.