

The BMW 5 Series
Sedan



530i
545i

The Ultimate
Driving Experience™



Mind over matter.



Every superfluous ounce has been shed
and replaced with power.



Our engineers added one special component: passion.



Seeing is believing.





Everything is in its place.
Waiting for your touch.

Equipment



■ **Xenon headlights** illuminate the road ahead and to the side with brilliant clarity. These headlights also feature auto-levelling to adjust for varying passenger and cargo loads. In conjunction with the new Adaptive Headlights (optional on the 530i), this also means much improved visibility in bends, as the adjustable headlights are directed into the bend as soon as the vehicle begins cornering.



□ **Star Spoke alloy wheels** (performance run-flat tires) - Style 123, 18X8.0. (Available only on the 530i.)



□ **Star Spoke alloy wheels** (performance run-flat tires) - Style 124, 18 X 8.0 front, 245/40R-18; 18X9.0 rear, 275/35R-18. (Available only on the 545i.)



■ **Multi-function leather steering wheel** allows for convenient operation of numerous functions without being distracted from road traffic - which means you keep your hands on the wheel all the time. Buttons are included for audio, cruise control and telephone. Functionality of two separate buttons may be defined by the user.



□ **Active Cruise Control** enables comfortable driving at a pre-set speed. When driving in columns of traffic, your BMW automatically adapts to the speed of a preceding vehicle and maintains a pre-set distance, allowing drivers to concentrate fully on the traffic around them.



■ **Automatic Air Conditioning**, with Automatic Air Recirculation (AAR), solar sensor and mist sensor, automatic temperature control and air distribution (separate for driver and front passenger), as well as air quantity control. Also features an air-conditioned storage compartment in the centre console.



□ **Navigation System** presents information in the dazzle-free Control Display, including the BMW Professional CD/radio. Driving information is provided by the voice computer, with further data added by the direction arrow or map.



□ **Telephone and BMW Assist preparation** enhances driving safety even further with Bluetooth technology; including one year of BMW Assist Safety and Security Services at no extra charge. With the BMW Assist Safety and Security Package you get access to Emergency Roadside Assistance service. Please see your local BMW Retailer for further details.



□ **CD Changer**, for six CDs, integrated into the back of the glovebox.

Equipment



□ **Sequential Manual Gearbox (SMG®)** offers both normal and sport manual transmission modes via the paddles on the steering wheel or the shifter. The sport mode may be selected by depressing the “sport” button. (European model shown.)



□ **Comfort seats** at the front, electrically adjustable with multi-function control of seat angle, headrest position, backrest angle, seat height and active headrests for the driver and front passenger. Also include lumbar support, seat depth adjustment, and backrest width adjustment.



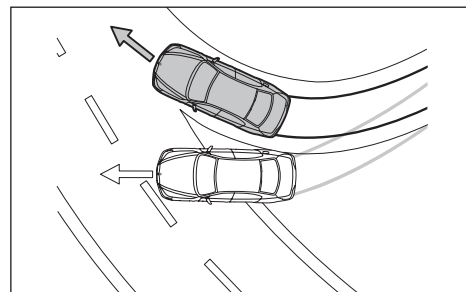
□ **Ventilated seats** for the driver and front passenger. Ventilator fans are built into the outside seats and blow air upwards through an internal web and the micro-perforated Nasca Leather to provide active ventilation.



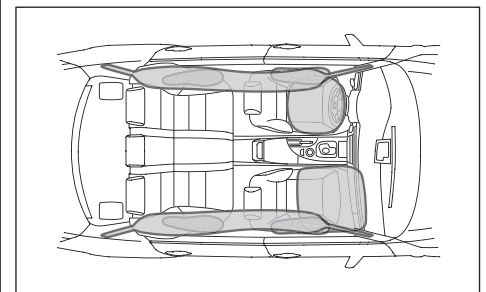
□ **Park Distance Control (PDC)** uses ultrasonic sensors in the bumpers to help you judge the distance to other cars and unseen objects when parking. The beeping becomes faster as your bumper approaches the object, turning into a constant tone when the distance is less than 30 centimetres.



■ **Glass sunroof** allows natural light to enter the cabin. For convenience, it has a “one touch” open-and-close feature with anti-trapping, as well as a tilt function for ventilating the inside of your car on hot summer days.



■ **Dynamic Stability Control (DSC)** including Dynamic Traction Control (DTC), Cornering Brake Control (CBC) and Dynamic Brake Control (DBC). DSC recognizes the risk of swerving from the start and stabilizes the car within milliseconds. DTC is a subsidiary function of DSC and permits increased wheel slip within defined limits, in order to maximize propulsion in specific situations.



■ **Airbag system:** In the event of a collision, only the airbags that are needed are deployed. Up to eight airbags offer specific protection: the driver and front passenger airbags (which are released at different speeds, depending on the strength of the impact), the front-to-rear head airbags, the side airbags in the front and the optional side airbags at the rear.

Standard Equipment | Optional Equipment

	530i	545i
Safety		
Adaptive Brakelights	■	■
Adaptive Headlights	□	■
Airbags:		
– Advanced Head Protection System (HPS) for front and rear passengers	■	■
– Driver and front passenger Impact-Dependent (ID) airbag system; seat occupancy detector for front passenger airbag	■	■
– Side thorax airbags, front	■	■
– Side thorax airbags, rear	□	□
– SMART airbag deployment system	■	■
Alarm system with remote control and interior motion sensor	■	■
Battery Safety Terminal (BST)	■	■
Brakes:		
– Disk brakes at the front, inner-vented	■	■
– Disk brakes at the rear, inner-vented	■	■
Bumper system , with crumple zones front and rear to absorb impacts of up to 15 km/h. Bumpers absorb impacts up to 4 km/h without damage.	■	■
Central locking , locks doors, luggage compartment and fuel filler cap	■	■
Dynamic Stability Control (DSC) includes Anti-lock Braking System (ABS), Dynamic Traction Control (DTC), Dynamic Brake Control (DBC) and Cornering Brake Control (CBC)	■	■
Foglights	■	■
High-pressure headlight cleaning system	□	■
Park Distance Control (PDC) with visual and acoustic feedback	□	□
Rain sensor including automatic headlights, windshield wiper control and condensation sensor	■	■
Seatbelts:		
– Front seatbelt height adjustment	■	■
– Inertia-reel seat belts with pyrotechnical belt latch tensioner	■	■
– Rear three-point centre safety belt	■	■
Side impact protection , integrated	■	■
Tire Pressure Warning (TPW)	■	■
Xenon headlights for low and high beam , with auto-levelling function	■	■
Engine		
6-cylinder in-line engine with four-valve technology	■	–
Cylinder-specific knock control	■	■
Digital Motor Electronics (DME)	■	■
Double-VANOS , steplessly variable valve timing	■	■
Individual Control Intake Manifold (ICIM)	■	■
Light alloy cylinder head	■	■
Light alloy engine block	■	■
On-board diagnostics	■	■
Three-way catalytic converter , heated oxygen sensor, activated carbon filter, controlled tank purge	■	■
V8 engine with four-valve technology	–	■
Valvetronic® engine control	–	■

Standard Equipment | Optional Equipment

	530i	545i
Transmission/Suspension		
6-speed automatic transmission with STEPTRONIC	<input type="checkbox"/>	<input type="checkbox"/>
6-speed manual transmission	<input checked="" type="checkbox"/>	<input checked="" type="checkbox"/>
6-speed Sequential Manual Gearbox (SMG®)	<input type="checkbox"/>	<input type="checkbox"/>
Active Cruise Control (ACC)	<input type="checkbox"/>	<input type="checkbox"/>
Active Steering	<input type="checkbox"/>	<input type="checkbox"/>
Aluminum integral rear axle	<input checked="" type="checkbox"/>	<input checked="" type="checkbox"/>
Cruise Control	<input checked="" type="checkbox"/>	<input checked="" type="checkbox"/>
Double-joint spring-strut front axle	<input checked="" type="checkbox"/>	<input checked="" type="checkbox"/>
Dynamic Drive with SERVOTRONIC	<input type="checkbox"/>	<input type="checkbox"/>
Power steering	<input checked="" type="checkbox"/>	<input checked="" type="checkbox"/>
Interior Features		
Automatic Climate Control, including Automatic Air Recirculation (AAR)	<input checked="" type="checkbox"/>	<input checked="" type="checkbox"/>
Central air outlet, rear	<input checked="" type="checkbox"/>	<input checked="" type="checkbox"/>
Central armrest, front and rear with storage	<input checked="" type="checkbox"/>	<input checked="" type="checkbox"/>
Control Display	<input checked="" type="checkbox"/>	<input checked="" type="checkbox"/>
Controller on centre console	<input checked="" type="checkbox"/>	<input checked="" type="checkbox"/>
Courtesy lights with automatic function and soft on/off dimming	<input checked="" type="checkbox"/>	<input checked="" type="checkbox"/>
Cupholders, front and rear	<input checked="" type="checkbox"/>	<input checked="" type="checkbox"/>
Electric rear sunshade with manual side sunshades	<input type="checkbox"/>	<input type="checkbox"/>
Glass sunroof, electric	<input checked="" type="checkbox"/>	<input checked="" type="checkbox"/>
Head-Up Display	<input type="checkbox"/>	<input type="checkbox"/>
Information/communication:		
– BMW Assist Services	<input type="checkbox"/>	<input type="checkbox"/>
– Preparation for car telephone and BMW Assist incl. Bluetooth technology	<input checked="" type="checkbox"/>	<input checked="" type="checkbox"/>
Interior and exterior mirrors with automatic anti-dazzle function	<input type="checkbox"/>	<input checked="" type="checkbox"/>
Interior Trim:		
– Anthracite Maple	<input type="checkbox"/>	<input checked="" type="checkbox"/>
– Light Poplar	<input type="checkbox"/>	<input type="checkbox"/>
– Poplar Grain	<input checked="" type="checkbox"/>	<input type="checkbox"/>
“LIGHTS ON” warning	<input checked="" type="checkbox"/>	<input checked="" type="checkbox"/>
Locking illuminated glove box, with takeout flashlight	<input checked="" type="checkbox"/>	<input checked="" type="checkbox"/>
Luggage compartment, volume of approx. 520 litres	<input checked="" type="checkbox"/>	<input checked="" type="checkbox"/>
On-board computer	<input checked="" type="checkbox"/>	<input checked="" type="checkbox"/>
Outside temperature display	<input checked="" type="checkbox"/>	<input checked="" type="checkbox"/>
Power front and rear windows, anti-trap with “one touch” feature up/down operation	<input checked="" type="checkbox"/>	<input checked="" type="checkbox"/>
Radio/audio:		
– BMW Business CD, AM/FM stereo with RDS and MP3 function	<input checked="" type="checkbox"/>	<input checked="" type="checkbox"/>
– CD Changer (6 CDs), in glove compartment	<input type="checkbox"/>	<input type="checkbox"/>
– HiFi Loudspeaker System	<input checked="" type="checkbox"/>	<input checked="" type="checkbox"/>
– Harman/Kardon LOGIC7 Sound System	<input type="checkbox"/>	<input type="checkbox"/>
Reading lights, front and rear	<input checked="" type="checkbox"/>	<input checked="" type="checkbox"/>

Standard Equipment | Optional Equipment

Interior Features	530i	545i
Seats and seat comfort:		
– Comfort seats for driver and front passenger, with electric seat adjustment	□	□
– Electric seats with driver memory	■	■
– Lumbar support for driver and front passenger	□	□
– Seat heating for driver and front passenger	■	■
– Seat heating for rear seats	□	□
– Sport seats for driver and front passenger, with electric adjustment	□	□
– Ventilated seats for driver and front passenger	□	□
Steering column with electric height and length adjustment	■	■
Steering wheel:		
Heated steering wheel	■	■
Leather sport steering wheel, 3-spoke with multi-function buttons	□	□
Multi-function leather steering wheel	■	■
Throughload , with ski bag	□	□
Universal garage door opener	–	■
Upholstery:		
– Dakota Leather	■	■
– Nasca Leather	□	□
Exterior Features		
Direction indicators , white	■	■
Door handles in body colour	■	■
Exterior mirrors , auto-dimming	□	■
Exterior mirrors , in body colour, electrically adjustable	■	■
Headlight range control	■	■
Luggage compartment lid , in the vehicle's interior or the key's remote control, with electric unlocking via a switch	■	■
Ornamental front grille with vertical slats in black and chrome surround	■	–
Ornamental front grille with vertical slats in chrome and chrome surround	–	■
Screenwasher nozzles on engine compartment lid , heated, including heated exterior mirrors	■	■
High-gloss Shadow Line	□	□
Window frames and window recess finishers in chrome	■	■
Wheels:		
– Star Spoke alloy wheels (all-season tires), Style 138, 17 x 7.5, 225/50R-17	■	–
– Double Spoke alloy wheels (all-season tires), Style 116, 17 x 7.5, 225/50R-17	–	■

Standard Equipment | Optional Equipment

	530i	545i
Premium Package		
Heated seats, rear; Harman/Kardon LOGIC 7 Sound System; Interior and exterior mirrors with automatic anti-dazzle function; Park Distance Control (PDC); Throughload with ski bag	□	—
Comfort seats, front; Heated seats, rear; Harman/Kardon LOGIC 7 Sound System; Park Distance Control (PDC); Throughload with ski bag	—	□
Sport Package		
Star Spoke alloy wheels (performance run-flat tires), Style 123, 18 x 8.0, 245/40R-18; High-gloss Shadow Line; Leather sport steering wheel; Sport suspension	□	—
Star Spoke alloy wheels (performance run-flat tires), Style 124, 18 x 8.0 front, 245/40R-18; 18 x 9.0 rear, 275/35R-18; High-gloss Shadow Line; Leather sport steering wheel; Sport suspension	—	□
Dynamic Handling Package		
Active Steering; Dynamic Drive	□	□
Navigation Package		
BMW On-Board Navigation System with Voice Recognition; Canada-US Navigation CD	□	□

Specifications | Technical Data*

Weight		530i	545i
Curb weight	kg	1575 (1585)	1725 (1730)
Max. permissible	kg	2075 (2085)	2225 (2230)
Permitted load	kg	500	500
Permitted axle load, front/rear	kg	1010/1180	1090/1215
Permitted roof load	kg	100	100
Weight distribution, front	%	50.8 (51.1)	51.3 (51.4)
Weight distribution, rear	%	49.2 (48.9)	48.7 (48.6)
Luggage capacity	L	520	520

Engine			
Cylinders/Valves		6/24	8/32
Capacity	cc	2979	4398
Bore/Stroke	mm	84.0/89.6	92.0/82.7
Max. output	hp/rpm	225/5900	325/6100
Max. torque	lb-ft/rpm	214/3500	330/3700
Compression ratio	:1	10.2	10.0

Transmission			
Manual transmission ratios	I/II/III :1	4.35/2.496/1.665	4.055/2.396/1.582
	IV/V/VI :1	1.23/1.0/0.851	1.192/1.00/0.872
	R :1	3.93	3.77
Automatic transmission ratios	I/II/III :1	4.17/2.34/1.52	4.17/2.34/1.52
	IV/V/VI :1	1.14/0.87/0.69	1.14/0.87/0.69
	R :1	3.40	3.40

Performance			
Top speed, electronically limited	km/h	240	240
Acceleration 0–100 km/h (man/SMG®/auto)	sec	7.0/7.0/7.2	6.0/6.0/6.1

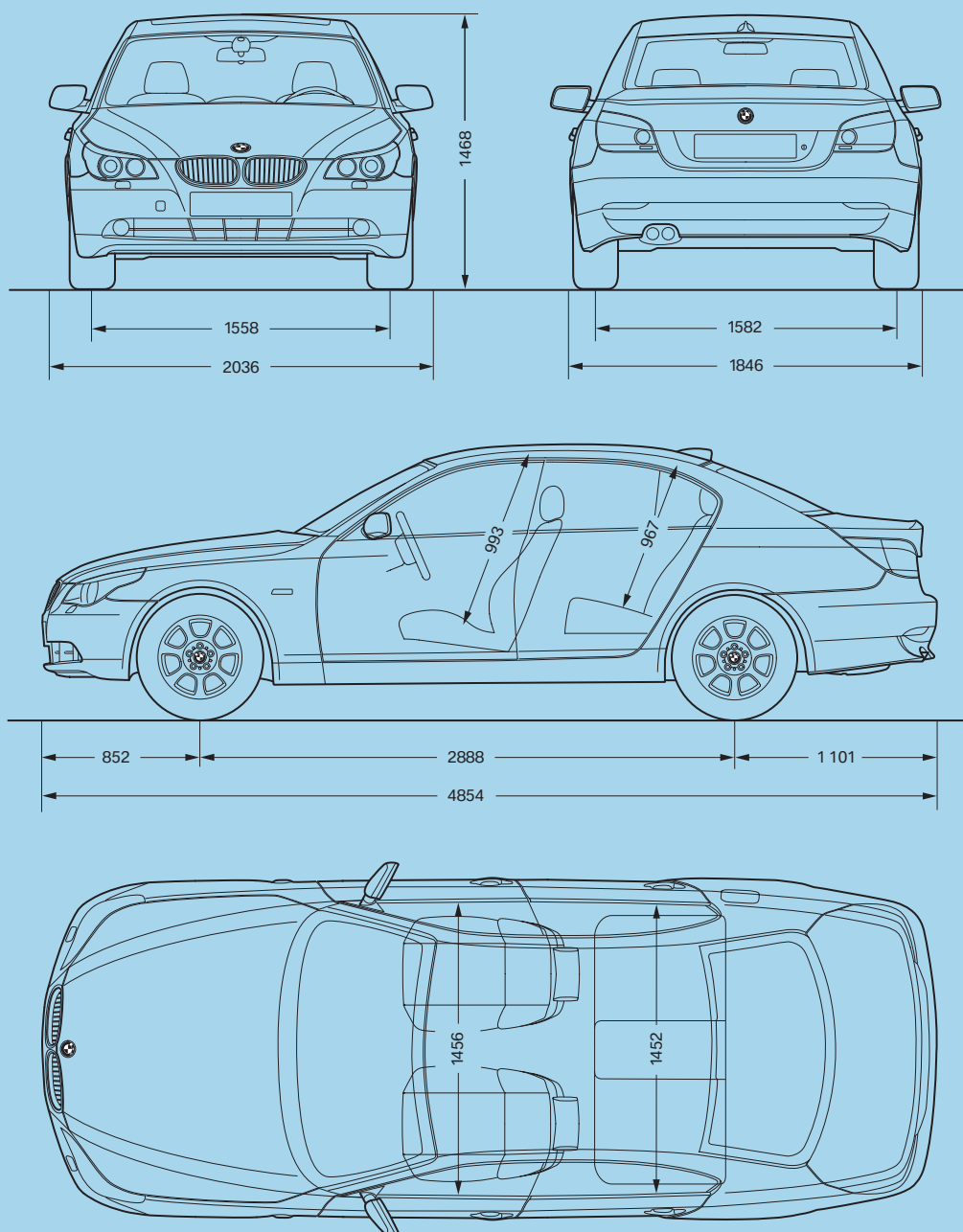
Fuel Consumption			
City (man/SMG®/auto)	L/100 km	11.7/11.5/12.9	14.4/14.4/13.0
Highway (man/SMG®/auto)	L/100 km	7.2/7.3/7.8	8.6/8.7/8.2
Tank capacity, approx	L	70	70

Wheels			
Tire dimensions		225/50 R-17	225/50 R-17
Wheel dimensions		17 x 7.5	17 x 7.5
Material		Light alloy	Light alloy

Electrical System			
Battery capacity	Ah	80	110
Alternator output	Amps/Watts	150/2100	170/2380

*For further Sequential Manual Gearbox (SMG®) specifications and technical data, please see your local BMW Retailer.

Specifications | Technical Data



All dimensions in millimetres.

Values in () apply to vehicles with six-speed automatic transmission unless otherwise indicated.

Exclusive Canadian importer and distributor – BMW Canada Inc., Whitby, Ontario L1N 6K9. All specifications, standard features, accessories, equipment, options, fabrics and colours are based on product information available at the time of printing. BMW reserves the right to revise specifications at any time, without notice. Illustrations are representative only. BMW may determine the Model Year designation of its vehicles. Models may be shown with features, accessories, equipment, options, fabrics and/or colours not available in Canada, or available only at extra cost, or available only on particular models. While BMW takes care to ensure that the information contained in

this brochure is accurate, it cannot guarantee complete accuracy. BMW is not responsible for errors or omissions contained in this brochure. Further information about the products shown in this brochure can be obtained from your authorized BMW Retailer and at www.BMW.ca.

©2004 BMW Group, Munich, Germany. Not to be reproduced wholly or in part without written permission of BMW Group, Germany. "BMW"; the BMW logo, the BMW Driver Training logo, "The Ultimate Driving Experience"; "SMG"; "Valvetronic" and all model designations are registered trademarks of the BMW Group, used under licence by BMW Canada Inc.

BMW recommends Castrol