

2010 | **ESCAPE** AND
ESCAPE HYBRID



Drive one.

FUEL-SIPPING, FUN-LOVING, ADVENTURE SEEKERS.



The 2010 Ford Escape and Escape Hybrid are your tickets to fun — anytime and anywhere. When properly equipped, Escape tows up to 1588 kg (3500 lbs.).² Taking fuel efficiency to extremes, Escape Hybrid FWD delivers up to 5.8L/100 km (49 mpg) city and 6.5L/100 km (43 mpg) hwy.¹ Equipped with the 2.5L engine and 6-speed automatic transmission, Escape FWD gives you 9.4L/100 km (30 mpg) city and 7.0L/100 km (40 mpg) hwy.¹ Both models offer the capability of available Intelligent 4WD, plus tons of smart new technology like our available voice-activated Ford SYNC[®] with new 911 Assist,[™] and the available Active Park Assist system that helps you conquer parallel parking. Every road leads to exciting new adventures in Escape.



Drive one.

ESCAPE

ESCAPE HYBRID

7.0L

PER 100 KM HWY.

(40 mpg)¹

5.8L

PER 100 KM CITY

(49 mpg)¹

Escape Limited in Black with available equipment.

¹Fuel consumption ratings based on Transport Canada approved test methods. Actual consumption may vary. See specifications for details.

²When properly equipped with Class II Trailer Tow Prep Package. Maximum trailer towing capability will vary based on passenger and cargo loads, and optional equipment installed on the vehicle. See your Ford of Canada Dealer for more information.

Every Escape is naturally nimble thanks to its fully independent suspension and exceptional ground clearance. The 171-horsepower Duratec® 2.5L 4-cylinder engine delivers outstanding fuel economy: up to 7.0L/100 km hwy. (9.4 city) with the 6-speed automatic and FWD; 7.2L/100 km hwy. (9.2 city) with the 5-speed manual and FWD. Our industry-first Easy Fuel™ capless fuel filler, standard on every Escape, automatically seals shut when you remove the fuel nozzle. No cap — just gas up and go.



V6 FLEXIBILITY

The available V6 is now Flex Fuel capable, so it runs on gasoline, E85 (85% ethanol and 15% gasoline), or any blend of the two. It yields 240 horsepower and a 1588-kg (3500-lb.) maximum towing capacity.



4WD TENACITY

Always on and always working: the available Intelligent 4WD System monitors traction 200 times per second and adjusts torque distribution as needed for maximum grip.

CAPABLE
OF GETTING YOU OUT THERE.



Escape XLT in Ingot Silver Metallic with available equipment.

CONFIDENT

PARALLEL PARKING AND BEYOND.



You just pull Escape alongside a potential spot, and press a button to enable the available Active Park Assist system. It takes some measurements and prompts you when it's ready to park. You simply follow its instructions, shift the transmission, and operate the gas and brake pedals — while it automatically steers into the spot. New for 2010, this remarkable system is available on Limited and the new Hybrid Limited. It's bound to be your new best friend.



HELPS YOU BACK UP

The available new Rear View Camera displays a full-colour image from a liftgate-mounted camera on the available Navigation System's 6.5-in. LCD screen (when equipped) or on your rearview mirror.



POSITIVELY HABIT FORMING

The available new MyKey™ owner controls feature is an industry-first, Ford exclusive. It lets you program ignition keys with specific parameters to help encourage smart driving habits, such as buckling up and travelling at appropriate speeds.

TECHNOLOGY THAT KEEPS YOU
CONNECTED.

SYNC
Powered by **Microsoft**

SIRIUS
SATELLITE RADIO



Standard SIRIUS® Satellite Radio¹ comes with a 6-month prepaid subscription. Surf up to 120 channels including 100% commercial-free music, plus the best sports, news, talk and entertainment, all across Canada. The available Ford SYNC® voice-activated, in-vehicle communications and entertainment system features new 911 Assist,² which can directly contact a 911 operator if any airbag has deployed.² SYNC integrates your Bluetooth®-enabled mobile phone and nearly any portable digital media player.³ Visit SyncMyRide.ca for details. You talk. SYNC listens.TM



LEADS THE WAY AND MORE

Displayed on a bright 6.5-in. LCD touch screen, the available Navigation System features easy voice activation for everything from driving directions to accessing tunes. It also provides nearly 10 gigabytes of storage space for photos and music (up to 2400 songs). You can even use it to watch DVDs when Escape is in Park.

¹See your Ford of Canada Dealer or contact SIRIUS at 1-888-539-7474 for more information.

²The vehicle's electrical system (including the battery), the wireless service provider's signal, and a connected mobile phone must all be available and operating for 911 Assist to function properly. These systems may become damaged in a crash. The paired mobile phone must be turned on, connected to SYNC, and the 911 Assist feature enabled in order for 911 to be dialed.

³Some mobile phones and some digital media players may not be fully compatible. Visit SyncMyRide.ca for full connectivity details. Driving while distracted can result in loss of vehicle control. Only use mobile phones and other devices, even with voice commands, when it is safe to do so.

It's the ultimate statement of streetwise style: the new Sport Appearance Package, available exclusively on Escape XLT in Ingot Silver Metallic, Sangria Red Metallic or Black. This eye-catching Escape is dressed to impress, starting up front with a high-gloss Black grille and lower front appliqué framed by headlamps featuring a unique Blacked-out treatment. On the sides, body-colour door handles and rocker mouldings are accented by the high-gloss Black sideview mirrors and liftgate spoiler. All-season black-sidewall tires and 17-in. premium Black wheels with a machined-finish perimeter ring transfer power to the pavement with attitude.



SHINES IN BLACK

The dramatic Sport Appearance Package interior features Charcoal Black cloth seating surrounded by a Charcoal Black environment. The instrument cluster, centre console and doors are accented with a high-gloss Black finish, while the door handles, air vents and shifter knob each get a touch of chrome finish.



**DESIGNED TO BE NOTICED:
XLT SPORT.**

SUPPORTIVE IN ALL THE RIGHT PLACES.



Escape Limited in Charcoal Black with available equipment.

Escape's comfort-designed seats easily accommodate as many as 5 adults. Supple leather-trimmed seating and heated front seats are standard on Limited and the new Hybrid Limited. The driver and front passenger can select independent settings with the available Dual-zone Electronic Automatic Temperature Control. Even your changing moods are supported by the available Ambient Lighting, which illuminates the front and rear footwells and front cupholders in your choice of 7 hues from red hot to cool blue.



CLEARs FROST AND ICE

Every Escape comes equipped with heated sideview mirrors that improve visibility at the touch of a button. The integrated Blind Spot Mirrors (late availability) are especially helpful when changing lanes, parallel parking or backing up with a trailer.



OPENS YOUR OUTLOOK

A power moonroof with sunshade and mini-overhead console is standard on Limited and Hybrid Limited.

As you embark upon each new activity, your cargo needs change. Escape is built to keep up with the action. With the 60/40 split rear seats folded flat, you can carry up to 1903 litres (67.2 cu. ft.)¹ of cargo. Have rear-seat passengers? You still get to fill 889 litres (31.4 cu. ft.)¹ of space behind them. Smaller items, such as a laptop or purse, can be stowed in the hidden storage area inside the front floor console.

¹Escape XLT capacities listed. Actual capacities vary by model. Passenger and cargo capacity limited by weight and weight distribution.



POWERS YOUR GEAR

Escape Hybrid is uniquely equipped for your adventures with its 110-volt power outlet.² Use it for your laptop, a radio, or even a small TV.

²See your Owner's Guide for complete details.



HANDLES THE DIRTY WORK

This hidden, lockable wet trunk is paired with a retractable cargo area cover. You'll find both in the Rear Cargo Convenience Group that's standard on Limited and available on XLT.



**PREPARED
TO MEET YOUR NEEDS.**

Escape Hybrid Limited in Stone with available equipment.

LEADING THE (RE)CHARGE: ESCAPE HYBRID.



ESCAPE HYBRID

5.8L
PER 100 KM CITY
(49 mpg)¹

¹5.8L/100 km (49 mpg) city and 6.5L/100 km (43 mpg) hwy. on Escape Hybrid FWD. Fuel consumption ratings based on Transport Canada approved test methods. Actual consumption may vary. See specifications for details.

Escape Hybrid's powertrain is so self-sufficient, it actually recharges itself. The 2.5L 4-cylinder engine works with the electric traction motor to move you with 177 net hp. When you apply the brakes, the Regenerative Braking System captures kinetic energy to recharge the 330-volt battery pack. The battery pack supplies energy to start the engine and to drive in 100% electric mode up to 64 km/h (40 mph), during which it produces near-zero tailpipe emissions.²

²When operating in Electric Drive mode.



TRACKS PERFORMANCE

On Hybrid models, the optional Navigation System includes a Hybrid Energy Flow monitor that displays the powertrain's modes of operation and overall fuel efficiency.

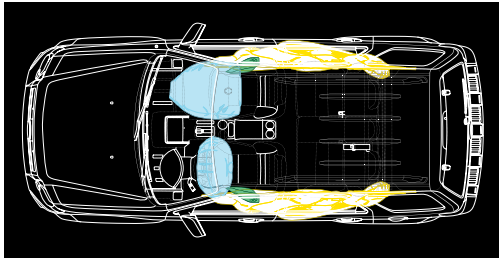


REDUCES WASTE

The use of environmentally friendly, soy-based foam in seat cushions helps conserve limited resources and reduce CO₂ emissions. Escape XLT and Hybrid get sustainable premium cloth-trimmed seats made with 100% post-industrial materials — recycled plastics and polyester fibers that would otherwise have ended up in landfills.

Every one of our innovative safety systems — including AdvanceTrac® with RSC® (Roll Stability Control™) — is standard equipment on every Escape and Escape Hybrid. AdvanceTrac with RSC is the only brake-based electronic stability control system to utilize a roll-rate sensor, monitoring the vehicle's roll motion at least 100 times per second. It works in conjunction with the Anti-lock Brake System (ABS), traction control and yaw control, to automatically react and help keep all 4 wheels firmly planted.¹ The Personal Safety System™ enhances protection for the driver and front passenger in the event of certain frontal collisions, while the Safety Canopy® System enhances protection for both rows of outboard-seated occupants in the event of certain side-impact collisions.

¹Remember that even advanced technology cannot overcome the laws of physics. It's always possible to lose control of a vehicle due to inappropriate driver input for the conditions.



6 AIRBAGS — STANDARD

Your protection is enhanced by:

- 2 front airbags (Personal Safety System)
- 2 front-seat side airbags
- 2 side-curtain airbags (Safety Canopy System)

SAFETY IS STANDARD FOR YOUR PEACE OF MIND.



Escape XLT in Sterling Grey Metallic with available equipment.

SPECIFICATIONS

Model-Specific Features

XLT

Select standard content:

Black roof-rack side rails with crossbars • 16-in. cast-aluminum wheels • Chrome upper grille, body-colour lower • Black exterior door handles and sideview mirrors • SecuriCode™ keyless-entry keypad • SecuriLock passive anti-theft engine immobilizer system • AM/FM stereo/single-CD player with MP3 capability • Ghin Rime-trimmed centre stack • Sustainable cloth seats with 6-way power driver seat

Limited

Includes XLT content, plus:

Intelligent 4WD System • 16-in. bright machined-aluminum wheels • Chrome upper and lower grilles, liftgate garnish and roof-rail inserts • Body-colour door handles and sideview mirrors • Power moonroof • Reverse Sensing System • Premium Sound System with AM/FM stereo/single-CD player, MP3 capability and 7 speakers • Ford SYNC • Leather-trimmed seats with heated front seats • Leather-wrapped steering wheel with cruise and secondary audio controls • Dual-zone Electronic Automatic Temperature Control • Ebony Black-trimmed centre stack • Chrome interior door handles, register bezels and shifter bezel • Auto-dimming rearview mirror • Illuminated visor vanity mirrors • Ambient Lighting • Universal Garage Door Opener • Cargo area cover

HYBRID

Includes XLT content, plus some equipment exclusive to Hybrid:

2.5L I-4 Atkinson-cycle engine • 330-volt sealed nickel-metal-hydride (NiMH) battery • Regenerative Braking System • 16-in. unique cast-aluminum wheels • Body-colour upper and lower grilles • Black roof-rack side rails w/o crossbars • Dual-zone Electronic Automatic Temperature Control • 110-volt AC power outlet • Leather-wrapped steering wheel with cruise and secondary audio controls • Illuminated visor vanity mirrors

HYBRID LIMITED

Includes Hybrid content, plus:

Chrome upper and lower grilles, liftgate garnish and roof-rail inserts • Body-colour door handles and sideview mirrors • Power moonroof • Reverse Sensing System • Rear View Camera • Premium Sound System • Ford SYNC • Leather-trimmed seats with heated front seats • Ebony Black-trimmed centre stack • Chrome interior door handles, register bezels and shifter bezel • Ambient Lighting • Universal Garage Door Opener • Cargo area cover

Estimated Fuel Consumption Ratings¹

L/100 km (mpg)

Engine	Transmission	FWD		4WD	
		City	Highway	City	Highway
2.5L	5-speed manual	9.2 (31)	7.2 (39)	—	—
2.5L	6-speed automatic	9.4 (30)	7.0 (40)	10.4 (27)	7.7 (37)
3.0L	6-speed automatic	10.9 (26)	8.0 (35)	11.6 (24)	8.8 (32)
Hybrid	eCVT	5.8 (49)	6.5 (43)	6.6 (43)	7.3 (39)

¹Fuel consumption ratings based on Transport Canada approved test methods. Actual consumption may vary.

Engines

Escape	Horsepower (hp @ rpm)	Torque (lb.-ft. @ rpm)	Towing Capacity ² kg (lbs.)
Duratec® 25–2.5L I-4	171 @ 6000	171 @ 4500	680 (1500)
Duratec 30–3.0L V6	240 @ 6550	223 @ 4300	1588 (3500) ³
Escape Hybrid			
2.5L I-4 Atkinson-cycle	153 @ 6000	136 @ 4500	—
Electric Motor	94 @ 5000	152 @ 4250	—
System Net	177	—	—

Hybrid System Net Horsepower is 177 — it is not the combination of the gas engine horsepower of 153 and the electric motor horsepower of 94, as the two systems generate horsepower at different times.

²Maximum capacity shown is for properly equipped vehicle with required equipment and a 68-kg (150-lb.) driver. Weight of additional options, equipment, passengers and cargo must be deducted from this weight. For additional information, see your Ford of Canada Dealer. ³With Class II Trailer Tow Prep Package.

Dimensions & Capacities

Exterior mm (in.)	Escape FWD/4WD	Escape Hybrid FWD/4WD
Overall length	4437 (174.7)	4437 (174.7)
Wheelbase	2619 (103.1)	2619 (103.1)
Overhang — Front	856 (33.7)	856 (33.7)
Overhang — Rear	960 (37.8)	960 (37.8)
Vehicle width (with mirrors)	2065 (81.3)	2065 (81.3)
Height (without options)	1725 (67.9)/1722 (67.8)	1720 (67.7)
Minimum running ground clearance	213 (8.4)	211 (8.3)
Liftover height	752 (29.6)/749 (29.5)	747 (29.4)/752 (29.6)
Ramp breakover angle	19.0°/18.9°	18.7°
Angle of approach	19.4°/19.3°	19.5°/19.6°
Angle of departure	28.3°	27.8°/27.7°
Interior mm (in.)		
Front		
Head room	1026 (40.4)	1026 (40.4)
Shoulder room	1438 (56.6)	1438 (56.6)
Hip room	1354 (53.3)	1354 (53.3)
Leg room (max.)	1057 (41.6)	1057 (41.6)
Rear		
Head room	996 (39.2)	996 (39.2)
Shoulder room	1420 (55.9)	1420 (55.9)
Hip room	1247 (49.1)	1247 (49.1)
Leg room (max.)	904 (35.6)	904 (35.6)
Cargo Volume ⁴ L (cu. ft.)		
Behind front row	1903 (67.2)	1880 (66.4)
Behind rear row	889 (31.4)	875 (30.9)

⁴May vary by model.

WHEELS



16-in. Cast-Aluminum Standard on XLT



17-in. Premium Black with Machined-Finish Perimeter Ring Sport Appearance Package



16-in. Bright Machined-Aluminum Standard on Limited



17-in. Chrome-Clad Aluminum Optional on XLT with automatic transmission and on Limited



16-in. Unique Cast-Aluminum Standard on Hybrid and on Hybrid Limited

ACCESSORIES

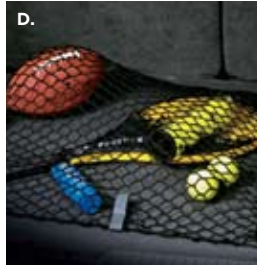
- A. Remote Start Systems
- B. Splash Guards
- C. Trailer Hitch Balls/Draw Bar
- D. Interior Cargo Net
- E. THULE® Racks, Carriers and Cargo Holders¹
- F. All-Weather Floor Mats
- G. Interior Rear Cargo Shade
- H. Interior Soft Cargo Organizers (Standard and Large Sizes)

Also available:

- Ashcup/Coin Holder/Smoker's Pack
- Cargo-Logic® System
- Dual INVISION™ DVD Headrests¹
- Electrochromic Mirror with HomeLink®
- Garmin® Portable Navigation Systems¹
- Hood Deflector
- Interior Lighting Kit
- Interior Soft Cargo Cooler Bag
- Keyless Entry Keypad
- Moonroof Deflector
- Roof Crossbars
- Running Boards
- Side Window Deflectors
- Vehicle Security System
- Wheel Locks
- Wiper Shaker De-Icer and Debris Cleaner¹

¹Ford Licensed Accessories.

Garmin is a registered trademark of Garmin Ltd.



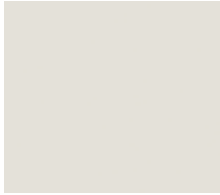
Ford of Canada warrants that its authorized Dealers will repair or replace any Genuine Ford Accessory that is properly installed by the authorized Dealer that sold the accessory and found to be defective in factory-supplied materials or workmanship. The accessory will be warranted for whichever provides you the greatest benefit: 12 months/20,000 km (whichever occurs first), or the remainder of your 36-month/60,000-km (whichever occurs first) Basic Coverage in the New Vehicle Limited Warranty. Contact your local Ford of Canada Dealer for details.

Ford Licensed Accessories (FLA) are warranted by the accessory manufacturer's limited warranty. The warranty coverage will vary by accessory manufacturer. Ford Licensed Accessories are fully designed and developed by the accessory manufacturer and have not been designed or tested to Ford engineering requirements. Contact your local Ford of Canada Dealer for details regarding the accessory manufacturer's limited warranty and/or for a copy of the FLA product limited warranty offered by the accessory manufacturer.

Ford ESP PremiumCare Plan. Depending on the Ford ESP Plan you select, some Dealer-installed Genuine Ford Accessories can be covered up to 7 years or 150,000 km. See your Ford of Canada Dealer for details.

COLOURS

Exterior



White Suede



Gold Leaf Metallic



Sangria Red Metallic



Kiwi Green Metallic



Steel Blue Metallic



Sport Blue Metallic



Ingot Silver Metallic



Sterling Grey Metallic



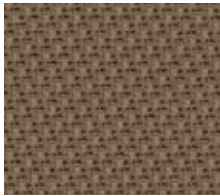
Black Pearl Slate Metallic



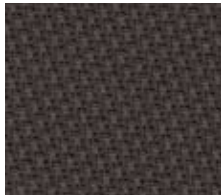
Black

Colours shown are representative only. Not all colours are available on all models. See your Ford of Canada Dealer for actual paint/trim options.

Interior



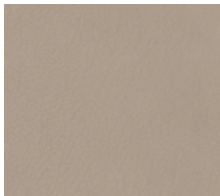
Camel Cloth
Standard on XLT



Greystone Cloth¹
Standard on XLT
and on Hybrid



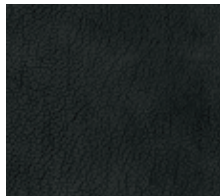
Charcoal Black Cloth
Standard on XLT



Camel Leather
Standard on Limited;
Available on XLT



Stone Leather
Standard on Hybrid Limited;
Available on XLT



Charcoal Black Leather
Standard on Limited;
Available on XLT

Camel	
Stone	
Charcoal Black	
XLT	
● ●	White Suede
● ● ●	Gold Leaf Metallic
● ● ●	Sangria Red Metallic
● ● ●	Steel Blue Metallic
● ● ●	Sport Blue Metallic
● ● ●	Ingot Silver Metallic
● ● ●	Sterling Grey Metallic
● ● ●	Black
Sport Appearance Package	
●	Sangria Red Metallic
●	Ingot Silver Metallic
●	Black
Limited	
● ●	White Suede
● ●	Gold Leaf Metallic
● ●	Sangria Red Metallic
● ●	Steel Blue Metallic
● ●	Ingot Silver Metallic
● ●	Sterling Grey Metallic
● ●	Black
Hybrid/Hybrid Limited	
●	White Suede
●	Kiwi Green Metallic
●	Steel Blue Metallic
●	Ingot Silver Metallic
●	Black Pearl Slate Metallic
●	Black

¹Stone environment.

For more information on
Ford of Canada products and services,
please visit our website:



Our commitment to you... Peace-of-Mind Protection

- Basic Coverage:
3 years/60,000 km
 - Powertrain Warranty:
5 years/100,000 km
 - Corrosion Warranty:
5 years/unlimited distance
 - Roadside Assistance:
5 years/100,000 km
 - Hybrid Unique Warranty Coverage:
8 years/160,000 km¹
- Certain conditions apply. For more information on these warranties and coverages, ask your local Ford of Canada Dealer or visit ford.ca.
¹eCVT — electronically controlled Continuously Variable Transmission, High-Voltage Battery and DC/DC converter.

For prompt, courteous answers to your questions:

Ford Customer Relationship Centre
1-800-565-3673
Ford Credit Customer Service Centre
1-877-636-7346

Please note: The electronic version of the Ford of Canada vehicle brochure is a condensed version of the original printed version.

Competitive comparisons are based on 2009 competitive models, publicly available information and Ford data at the time of printing of the 2010 original printed version. Some features discussed may be optional. Vehicles shown may contain optional equipment. Features shown may be offered only in combination with other options or subject to additional ordering requirements or limitations. Dimensions shown may vary due to optional features and/or production variability. Following publication of the 2010 original printed brochure, certain changes in standard equipment, options and the like, or product delays may have occurred which would not be included in these pages. Your Ford of Canada Dealer is your best source for up-to-date information. Ford Motor Company of Canada, Limited, reserves the right to change product specifications at any time without incurring obligations. Colours may not be exactly as illustrated. Please see your sales consultant for specific colour and model availability. Please visit your local dealer or ford.ca for complete vehicle details.

FORD EXTENDED SERVICE PLAN

For a purchase or lease, the Ford Extended Service Plan (ESP) gives you "Peace-of-Mind" protection designed to cover key vehicle components and help protect you from the cost of unexpected repairs. To add to your peace of mind and help protect your investment beyond your New Vehicle Basic Warranty, complement your ESP with a prepaid maintenance plan that covers all required scheduled maintenance items for your vehicle and 8 wear items. Ask your Dealer for a Ford ESP, the only service contract backed exclusively by Ford Motor Company of Canada, Limited, and honoured at all Ford and Ford Lincoln Dealerships across North America. Certain limitations and exclusions apply, see your Dealer for details.

FORD CREDIT

Get the ride you want. Whether you plan to lease or finance, you'll find the choices that are right for you at Ford Credit. Ask your local Ford of Canada Dealer for details or check us out at fordcredit.ca.



Escape & Escape Hybrid



Explorer



Sport Trac



Expedition & Expedition MAX