

2010 | **EXPEDITION** AND
EXPEDITION MAX



Drive one.

SPACIOUS. **CAPABLE.** RESOURCEFUL.

Ford Expedition and Expedition MAX are perfect for life's big adventures. They've got great style, comfortable seating for up to 8 and plenty of cargo space.¹ The proven 5.4L V8 and 6-speed automatic give you 310 hp, 365 lb.-ft. of torque, and a maximum towing capacity of up to 4082 kg (9000 lbs.).² The industry-first Easy Fuel[®] capless fuel filler helps reduce time spent at the pump, and Flex Fuel capability means you can fill up with gasoline, E85 (85% ethanol and 15% gasoline), or any blend of the 2. New for 2010, Trailer Sway Control helps increase towing confidence, while the MyKey[™] owner controls feature helps encourage smart driving habits. Live it up together in Expedition.

¹Cargo and load capacity limited by weight and weight distribution.

²When properly equipped.



Drive one.



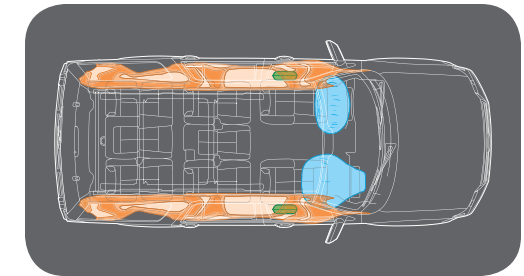
Expedition King Ranch[®] in Dark Blue Pearl Metallic with available equipment.

ASSURED. CALM. **CONFIDENT.**



Peace of mind comes standard, along with our AdvanceTrac® with RSC® (Roll Stability Control™) and Control Trac® 4-wheel drive. AdvanceTrac with RSC measures the vehicle's roll rate 100 times per second and automatically reacts to help keep all 4 wheels firmly planted.¹ In 4x4 AUTO mode, Control Trac automatically optimizes traction everywhere you go.

¹Remember that even advanced technology cannot overcome the laws of physics. It's always possible to lose control of a vehicle due to inappropriate driver input for the conditions.



PROTECTS WITH 6 AIRBAGS

The driver and front passenger get front-seat side airbags in addition to the dual-stage front airbags of the Personal Safety System.[™] In the event of certain side-impact collisions, the Safety Canopy® System's side-curtain airbags can help protect outboard-seated occupants.



REACTS INDEPENDENTLY

Expedition handles rugged terrain and road variations with ease thanks in part to the flexibility of its standard multilink independent rear suspension. Enjoy the ride.

Expedition XLT in Ingot Silver Metallic.

ENGAGING. INTELLIGENT. EASY TO USE.

SIRIUS
SATELLITE RADIO

SYNC
Powered by **Microsoft**

Standard SIRIUS® Satellite Radio¹ comes with a 6-month prepaid subscription. Surf up to 120 channels including 100% commercial-free music, plus the best sports, news, talk and entertainment, all across Canada. With new 911 Assist,² the available Ford SYNC® voice-activated, in-vehicle communications and entertainment system can directly contact a 911 operator if any airbag has deployed.² SYNC integrates your Bluetooth®-enabled mobile phone and nearly any portable media player.³ Visit SyncMyRide.ca for details.



LEADS THE WAY AND MORE

The available Navigation System features voice activation, a 6.5-in. LCD touch screen, and nearly 10 gigabytes of storage for photos and music. It even plays DVDs when Expedition is in "Park."



HELPS YOU BACK UP

The available Rear View Camera displays a full-colour image on the available navigation screen, or in your rearview mirror (without navigation).

¹See your Ford of Canada Dealer or contact SIRIUS at 1-888-539-7474 for more information. ²The vehicle's electrical system (including the battery), the wireless service provider's signal, and a connected mobile phone must all be available and operating for 911 Assist to function properly. These systems may become damaged in a crash. The paired mobile phone must be turned on, connected to SYNC, and the 911 Assist feature enabled in order for 911 to be dialed. ³Driving while distracted can result in loss of vehicle control. Only use mobile phones and other devices, even with voice commands, when it is safe to do so. Microsoft is a registered trademark of Microsoft Corporation. The Bluetooth word mark is a trademark of the Bluetooth SIG, Inc.

SUPPORTIVE. ACCOMMODATING. **DRAMATIC.**

The drama is optional, courtesy of this striking, high-contrast Eddie Bauer® interior. Comfy bucket seats are standard in the 1st row and available in the 2nd. The 10-way power-adjustable driver seat, power-adjustable pedals and power sideview mirrors (standard on Eddie Bauer, King Ranch® and Limited) include memory settings for 2 different drivers. It's ride sharing made simple.

Expedition MAX Eddie Bauer in Charcoal Black with Camel inserts and available equipment.

COMFORTS ON COMMAND

Just as refreshing as they are cozy, heated and cooled 1st-row seats are standard on Eddie Bauer, King Ranch and Limited. Heated 2nd-row seats are standard on King Ranch and Limited.



ADJUSTS WITH EASE

In the 2nd row, CenterSlide® allows you to pull the centre section of the standard seat forward for easy access from the 1st row. In the 3rd row, a convenient PowerFold® seat is standard on Eddie Bauer, King Ranch and Limited.



ROOMY. **ADAPTABLE.** VERSATILE.



The amazing expanse inside Expedition MAX includes no less than 3704 L (130.8 cu. ft.) of cargo space behind its 1st row. That's 637 L (22.5 cu. ft.) more than Expedition's cargo capacity!¹ Both models feature a flat loadfloor, courtesy of the Cargo Mode.

¹Cargo and load capacity limited by weight and weight distribution.



SPLITS THE DIFFERENCE

Expedition MAX gets its own unique cargo organizer for use behind the 3rd-row seat. The simple divider can be used to create 2 cargo areas or 2 storage shelves.



LIGHTENS YOUR LOAD

Just push a button on your key fob to raise or lower the available power liftgate. It pairs well with the available power-deployable running boards that automatically extend when you open a door and retract when you close it.

SPECIFICATIONS

Standard Equipment

Mechanical

5.4L 3-valve V8 FFV engine

6-speed automatic transmission with overdrive

4-wheel independent suspension with coil-over shocks — Front: double-wishbone,

Short- and Long-Arm (SLA) design; rear: multilink design

4-wheel power disc brakes with Anti-lock Brake System (ABS), Brake Assist and Electronic Brakeforce Distribution (EBD)

Body-on-frame construction

Control Trac® 4-wheel-drive (4WD) system

Engine block heater

Fuel tank — 106-litre capacity (129-litre on Expedition MAX)

Non-limited-slip rear axle — 3.31 ratio (Expedition only); 3.73 ratio (Expedition MAX only)

Spare tire — Full-size

Stabilizer bars — Front and rear

Variable-assist, power rack-and-pinion steering

Safety/Security

Personal Safety System™ for driver and front passenger — Includes dual-stage front airbags; safety belt pretensioners, safety belt energy-management retractors, safety belt usage sensors, driver-seat position sensor, crash severity sensor and restraint control module

AdvanceTrac® with RSC® (Roll Stability Control™)

Autolock — Doors lock automatically when driving

Battery saver with headlamps-off delay

Belt-Minder™ front safety belt reminder

Child-safety rear door locks

Front-seat side airbags¹

Height-adjustable shoulder safety belts — 1st-row

Integrated key transmitter remotes (2)

LATCH — Lower anchors and tether anchors for child-safety seats on rear-outboard seat positions

MyKey™ owner controls feature

Perimeter alarm

Safety belts — 3-point for all seating positions

Safety Canopy® System with side-curtain airbags¹

SecuriCode™ keyless-entry keypad

SecuriLock® passive anti-theft engine immobilizer system

Side-intrusion door beams

SOS Post-Crash Alert System™² flashes hazard lights and sounds horn after airbag deployment or safety belt pretensioner activation in certain collisions

Tire Pressure Monitoring System (excludes spare)

Seating

1st-row bucket seats or low-back buckets — Model-specific

2nd-row 40/20/40 split bench with CenterSlide® seat (slide-forward feature for centre section) — Reclines and folds flat to floor

3rd-row 60/40 split bench — Fold-flat-to-floor

Interior

Accessory delay for power features

Air conditioning

Assist handles — 1st row (2) and 2nd row (2)

Auto-dimming rearview mirror

Auxiliary audio input jack

Auxiliary rear air conditioning and heat

Cargo organizer (Expedition MAX only)

Cruise control — Steering wheel-mounted

Cupholders — 9

Floor console — Storage bin, coin holder, rear audio controls, 2 headphone jacks, 4 cupholders, 2 power points, auxiliary climate controls and pen holder

Floor mats — Carpeted 1st and 2nd rows (with King Ranch® logo on King Ranch)

Front door-trim panels with map pockets and cupholders (up to 0.5L bottles)

Interior Continued

Head restraints — All outboard positions and 2nd-row-centre position (if equipped with standard 40/20/40 split bench)

Instrumentation — Analog with voltmeter, speedometer/odometer, tachometer, and oil pressure, water temperature and fuel gauges

Lights — Glove compartment, front dome/map, 2nd-row map and rear cargo area; illuminated entry system with theatre lighting

Overhead console — Map lights, single sunglasses holder and conversation mirror (plus rear quarter window switches, if equipped)

Power door locks

Power points — 1st row (1), 2nd row (1) and rear cargo area (1)

Power windows with one-touch-down driver-window feature

Rear floor air vents

SIRIUS Satellite Radio (includes 6-month prepaid subscription)

Steering wheel — Leather-wrapped

Sun visors — Dual-blade with illuminated vanity mirrors

Tilt steering column

Exterior

Antenna — Concealed in rear quarter window glass

Automatic headlamps with rainlamp

Door and liftgate handles — Chrome with body-colour bezels

Easy Fuel® capless fuel filler

Fog lamps

Headlamps — Complex-reflector system with integrated park/turn-signal indicators (blackout treatment on Limited)

Heavy-Duty Trailer Tow Package — Includes Class IV hitch receiver, 4-pin and 7-pin connectors, heavy-duty auxiliary transmission oil cooler, heavy-duty radiator, electronic brake wiring kit and Trailer Sway Control

Liftgate with flip-up glass

Lower bodyside mouldings — Body-colour-painted on XLT and Limited; Pueblo Gold-painted on Eddie Bauer® and King Ranch

Mirrors — Power, heated sideview with security approach lamps and fold-away design (includes turn signals and memory on Eddie Bauer, King Ranch and Limited; power-folding on Limited)

Privacy glass (rear doors, quarter windows and rear window)

Rear-window defroster

Running boards — Black on XLT; Pueblo Gold on Eddie Bauer and King Ranch; body-colour on Limited

Tail lamps — Complex reflectors with two-tone colour lenses and built-in backup lighting

Tow hooks — Front

Wheel-lip mouldings — Body-colour-painted on XLT and Limited; Pueblo Gold-painted on Eddie Bauer and King Ranch

Windshield wipers — Front: speed-sensitive, 2-speed variable-intermittent; rear: intermittent with washer

¹Always wear your safety belt and secure children in the rear seat.

²SOS hardware may become damaged or the battery may lose power in a crash, which could prevent operation. Not all crashes will activate an airbag or safety belt pretensioner.

"SIRIUS," the SIRIUS dog logo, channel names and logos are trademarks of SIRIUS XM Radio Inc. Subscriptions governed by SIRIUS Terms and Conditions at siriuscanada.ca.

SPECIFICATIONS

Features & Options

Expedition XLT — 4x4

Expedition/Expedition MAX Eddie Bauer® — 4x4

Expedition/Expedition MAX King Ranch® — 4x4

Expedition/Expedition MAX Limited — 4x4

Mechanical

●	—	—	—	17-in. aluminum wheels
—	●	—	—	18-in. machined-aluminum wheels
—	—	●	—	18-in. machined-aluminum wheels with King Ranch centre caps
○	—	—	—	18-in. bright-machined aluminum wheels (late availability)
—	○	—	●	20-in. chrome-clad aluminum wheels
—	—	○	—	20-in. chrome-clad aluminum wheels with King Ranch centre caps
●	—	—	—	P265/70R17 on-/off-road OWL tires
○	●	●	—	P255/70R18 all-season OWL tires
—	○	○	●	P275/55R20 all-season BSW tires
—	○	○	○	Air suspension with rear load levelling and message centre (not available with skid plates)
●	●	●	●	Axle ratio — 3.31 (non-MAX only)
Ⓛ	Ⓛ	Ⓛ	Ⓛ	Axle ratio — 3.73 (standard on MAX, optional on non-MAX)
○	○	○	○	Skid plates (not available with air suspension)

Seating

●	—	—	—	1st-row bucket seats with floor console, and 6-way power driver seat with manual lumbar — Cloth trim
○	—	—	—	1st-row low-back bucket seats with 10-way power driver seat, including power lumbar, and passenger seat with manual lumbar — Leather trim
—	●	—	—	1st-row low-back bucket seats with 10-way power driver seat, including power lumbar, recline and memory, and 6-way power passenger seat with manual lumbar — Leather trim
—	—	●	—	1st-row low-back bucket seats with 10-way power driver seat, including power lumbar, recline and memory, and 6-way power passenger seat with manual lumbar — Chaparral leather trim
—	—	—	●	1st-row low-back bucket seats with 10-way power driver and front-passenger seats including power lumbar and power recline, driver-side memory and 2-way adjustable head restraints — Leather trim
—	○	○	○	2nd-row bucket seats
●	—	—	—	3rd-row 60/40 split fold-flat-to-floor bench seat — Cloth trim
○	●	●	●	PowerFold® 3rd-row seat — Vinyl trim on Eddie Bauer and Limited; Chaparral leather on King Ranch
—	●	●	●	Heated and cooled 1st-row seats
—	—	●	●	Heated 2nd-row seats

Interior

●	—	—	—	Air conditioning — Manual
—	●	●	●	Air conditioning — Dual-zone Electronic Automatic Temperature Control
●	—	—	—	AM/FM stereo with single-CD player and MP3 capability (160 watts)
Ⓛ	—	—	—	AM/FM stereo with 6-disc in-dash CD changer, MP3 capability and 4 speakers (160 watts) ¹
—	●	●	●	Premium Sound System with AM/FM stereo/6-disc in-dash CD changer, MP3 capability and 7 speakers including subwoofer (340 watts)
—	—	●	—	Chaparral leather trim on steering wheel, centre console lid and door inserts
○	○	○	○	Floor mats — Rubber, in 1st and 2nd rows ²
○	●	●	●	Ford SYNC® voice-activated, in-vehicle communications and entertainment system
Ⓛ	●	●	●	Message centre ¹ — Includes outside air temperature readout, compass, average fuel economy, trip odometer, distance-to-empty and elapsed time

Expedition XLT — 4x4

Expedition/Expedition MAX Eddie Bauer — 4x4

Expedition/Expedition MAX King Ranch — 4x4

Expedition/Expedition MAX Limited — 4x4

Interior Continued

—	○	○	○	Navigation System — Voice-activated with single-disc CD/DVD player with MP3 capability
Ⓛ	●	●	●	Power-adjustable pedals ¹ (with memory on Eddie Bauer, King Ranch and Limited)
○	○	○	●	Power moonroof with mini-overhead console
Ⓛ	Ⓛ	●	●	Power rear quarter windows ^{1,3}
○	○	○	○	Rear-Seat DVD Entertainment System
—	●	●	●	Steering wheel with secondary audio and climate controls
●	●	—	—	Steering wheel — Leather-wrapped
—	—	●	●	Steering wheel — Leather-wrapped with wood trim
Ⓛ	Ⓛ	●	●	Universal Garage Door Opener ^{1,3}

Exterior

●	—	—	●	Bumpers — Body-colour-painted upper and lower
—	●	●	—	Bumpers — Body-colour-painted upper, Pueblo Gold-painted lower
—	●	●	●	Chrome exhaust tip
●	●	●	—	Grille — Chrome
—	—	—	●	Grille — Body-colour
—	●	●	●	Mirrors — Power, heated sideview with memory settings, security approach lamps, fold-away design (power-folding on Limited) and integrated turn signals (body-colour caps on King Ranch and Limited)
—	Ⓛ	●	●	Power liftgate ³
—	Ⓛ	●	●	Rain-sensing windshield wipers ³
●	●	●	—	Raised roof rack side rails — Black with Black crossbars
—	—	—	●	Raised roof rack side rails — Chrome with Black crossbars
—	Ⓛ	●	●	Rear View Camera — Liftgate-mounted camera displays image in rearview mirror or on Navigation screen, if equipped ³
Ⓛ	●	●	●	Reverse Sensing System ¹
—	Ⓛ	○	○	Running boards — Power-deployable ³

Packages

—	○	—	—	Eddie Bauer Convenience Package — Includes power liftgate, power rear quarter windows, rain-sensing windshield wipers, Rear View Camera and Universal Garage Door Opener
○	—	—	—	XLT Convenience Package — Includes AM/FM stereo with 6-disc CD changer and 4 speakers, power-adjustable pedals, power rear quarter windows, Universal Garage Door Opener, message centre and Reverse Sensing System

● Standard Ⓛ Select Availability ○ Optional — Not Available

¹Requires XLT Convenience Package on XLT.

²Standard carpeted floor mats included with this option.

³Requires Eddie Bauer Convenience Package on Eddie Bauer.

SPECIFICATIONS

Model-Specific Features

XLT

Select standard content:

17-in. aluminum wheels • Body-colour lower bodyside mouldings, wheel-lip mouldings and bumpers • Chrome door handles • Fog lamps • Black, power, heated sideview mirrors with security approach lamps • Black roof side rails and crossbars • Black running boards • AM/FM stereo with single-CD player and MP3 capability • Auxiliary audio input jack • SIRIUS Satellite Radio • 1st-row bucket seats with 6-way power driver seat with manual lumbar • 2nd-row 40/20/40 split bench seat with CenterSlide® feature • 3rd-row 60/40 split fold-flat-to-floor bench seat • Colour-coordinated carpeted 1st- and 2nd-row floor mats • Overhead console • 1st- and 2nd-row map lights • SecuriCode™ keyless-entry keypad • AdvanceTrac® with RSC® (Roll Stability Control™) • Personal Safety System™ • Safety Canopy® System • MyKey™ owner controls feature • SOS Post-Crash Alert System™

Eddie Bauer®

Includes XLT content, plus:

18-in. machined-aluminum wheels • Chrome exhaust tip • Pueblo Gold lower bodyside mouldings, wheel-lip mouldings, bumpers and running boards • Black, power, heated sideview mirrors with memory, security approach lamps and integrated turn signals • Leather-trimmed seats with heated and cooled 1st-row bucket seats • 10-way power driver seat including power lumbar and recline with memory feature and 6-way power passenger seat • PowerFold® 3rd-row seat • Power-adjustable pedals with memory • Dual-zone Electronic Automatic Temperature Control • Message centre • Premium Sound System with AM/FM stereo/6-disc in-dash CD changer and MP3 capability • Ford SYNC® voice-activated, in-vehicle communications and entertainment system • Reverse Sensing System

King Ranch®

Includes Eddie Bauer content, plus:

18-in. machined-aluminum wheels with King Ranch logo on centre caps • King Ranch badging on front fender and liftgate • Power rear quarter windows • Power liftgate • Rain-sensing windshield wipers • Rear View Camera • Chaparral leather trim on all 3 rows of seating, centre console lid and door inserts • 2nd-row heated seats • Floor mats with King Ranch logo • Leather-wrapped steering wheel with wood accents and secondary audio controls • Simulated wood on switch plates, floor console, shifter handle and instrument panel • Universal Garage Door Opener

Limited

Includes Eddie Bauer content, plus:

20-in. chrome-clad aluminum wheels • Headlamps with blackout treatment • Monochromatic appearance • Power rear quarter windows • Chrome roof side rails with Black crossbars • Body-colour running boards • Body-colour, power-folding, heated sideview mirrors with memory, security approach lamps and integrated turn signals • Power liftgate • Rain-sensing windshield wipers • Rear View Camera • 10-way power driver and front-passenger leather-trimmed low-back bucket seats including power lumbar, power recline and driver-side memory • 2nd-row heated seats • Power moonroof with mini-overhead console • Leather-wrapped steering wheel with wood trim • Universal Garage Door Opener

Engine/Trailer Towing Applications

Expedition	Horsepower (hp @ rpm)	Torque (lb.-ft. @ rpm)	Towing Capacity kg (lbs.)
5.4L 3-Valve V8	310 @ 5100	365 @ 3600	4082 (9000)
Expedition MAX			
5.4L 3-Valve V8	310 @ 5100	365 @ 3600	3946 (8700)

NOTE: Maximum towing capability when properly equipped. Maximum capability will vary based on passenger and cargo loads, and optional equipment installed on the vehicles. See your Ford of Canada Dealer for more information.

Dimensions & Capacities

Exterior mm (in.)	Expedition	Expedition MAX
A. Overall length	5245 (206.5)	5621 (221.3)
B. Wheelbase	3023 (119.0)	3327 (131.0)
C. Overhang — Front	996 (39.2)	996 (39.2)
D. Overhang — Rear	1227 (48.3)	1298 (51.1)
E. Width (excluding mirrors)	2002 (78.8)	2002 (78.8)
Width (including mirrors)	2332 (91.8)	2332 (91.8)
F. Height (with options)	1961 (77.2)	1974 (77.7)
G. Ground clearance (minimum running)	221 (8.7)	221 (8.7)
H. Liftover height	884 (34.8)	897 (35.3)
I. Ramp breakover angle	18.3°	18.7°
J. Angle of approach	22.6°	24.1°
K. Angle of departure	21.5°	20.9°
Interior mm (in.)		
1st row		
Head room	1006 (39.6)	1003 (39.5)
Shoulder room	1605 (63.2)	1605 (63.2)
Hip room	1529 (60.2)	1529 (60.2)
Leg room	1044 (41.1)	1044 (41.1)
2nd row		
Head room	1011 (39.8)	1008 (39.7)
Shoulder room	1618 (63.7)	1618 (63.7)
Hip room	1521 (59.9)	1521 (59.9)
Leg room	993 (39.1)	993 (39.1)
3rd row		
Head room	973 (38.3)	965 (38.0)
Shoulder room	1318 (51.9)	1704 (67.1)
Hip room	1275 (50.2)	1316 (51.8)
Leg room	958 (37.7)	958 (37.7)
Capacities ¹ L (cu. ft.)		
Maximum cargo volume	3067 (108.3)	3704 (130.8)
Behind 2nd row	1557 (55.0)	2421 (85.5)
Behind 3rd row	527 (18.6)	1206 (42.6)

¹Cargo and load capacity limited by weight and weight distribution.

WHEELS



17-in. Aluminum Standard on XLT



18-in. Bright-Machined Aluminum Optional on XLT (late availability)



18-in. Machined-Aluminum Standard on Eddie Bauer



18-in. Machined-Aluminum with King Ranch® Centre Cap Standard on King Ranch



20-in. Chrome-Clad Aluminum with King Ranch Centre Cap Optional on King Ranch



20-in. Chrome-Clad Aluminum Standard on Limited; Optional on Eddie Bauer

ACCESSORIES

- A. Front Illuminated Sill Plates
- B. Roof Cross Bars
- C. Splash Guards
- D. Dual INVISION™ DVD Headrests¹
- E. Remote Start Systems
- F. Cargo-Logic® System

Also available:

- All-Weather Floor Mats
- Ashcup/Coin Holder/Smoker's Pack
- Garmin® Portable Navigation Systems¹
- Hood Deflector
- Interior Cargo Area Protector
- Interior Lighting Kit
- Moonroof Deflector
- Side Window Deflectors
- Trailer Hitch Balls/Draw Bars
- Wheel Locks

¹Ford Licensed Accessories.

Garmin is a registered trademark of Garmin Ltd.



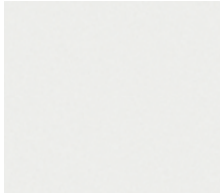
Ford of Canada warrants that its authorized Dealers will repair or replace any Genuine Ford Accessory that is properly installed by the authorized Dealer that sold the accessory and found to be defective in factory-supplied materials or workmanship. The accessory will be warranted for whichever provides you the greatest benefit: 12 months/20,000 km (whichever occurs first), or the remainder of your 36-month/60,000-km (whichever occurs first) Basic Coverage in the New Vehicle Limited Warranty. Contact your local Ford of Canada Dealer for details.

Ford Licensed Accessories (FLA) are warranted by the accessory manufacturer's limited warranty. The warranty coverage will vary by accessory manufacturer. Ford Licensed Accessories are fully designed and developed by the accessory manufacturer and have not been designed or tested to Ford engineering requirements. Contact your local Ford of Canada Dealer for details regarding the accessory manufacturer's limited warranty and/or for a copy of the FLA product limited warranty offered by the accessory manufacturer.

Ford ESP PremiumCare Plan. Depending on the Ford ESP Plan you select, some Dealer-installed Genuine Ford Accessories can be covered up to 7 years or 150,000 km. See your Ford of Canada Dealer for details.

COLOURS

Exterior



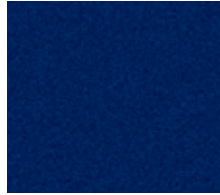
Oxford White



White Platinum Metallic Tri-Coat



Royal Red Metallic



Dark Blue Pearl Metallic



Ingot Silver Metallic



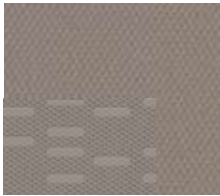
Sterling Grey Metallic



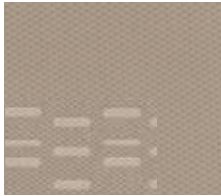
Tuxedo Black Metallic

Colours shown are representative only. Not all colours are available on all models. See your Ford of Canada Dealer for actual paint/trim options.

Interior



Stone Cloth Standard on XLT



Camel Cloth Standard on XLT



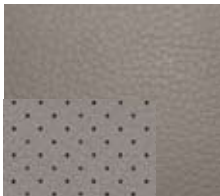
Stone Leather Optional on XLT



Camel Leather Optional on XLT



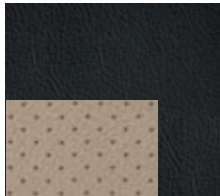
Chaparral Leather¹ Standard on King Ranch[®]



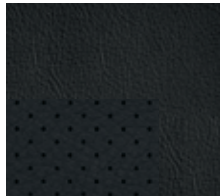
Stone Leather with Perforated Inserts Standard on Limited



Camel Leather with Perforated Inserts Standard on Eddie Bauer[®]



Charcoal Black Leather with Perforated Camel Inserts Standard on Eddie Bauer



Charcoal Black Leather with Perforated Inserts Standard on Limited

¹Charcoal Black environment.

	Stone
	Camel
	Charcoal Black
	XLT
● ●	Oxford White
● ●	Royal Red Metallic
● ●	Dark Blue Pearl Metallic
●	Ingot Silver Metallic
●	Sterling Grey Metallic
● ●	Tuxedo Black Metallic
	Eddie Bauer
● ●	Oxford White
● ●	White Platinum Metallic Tri-Coat ²
● ●	Royal Red Metallic
● ●	Dark Blue Pearl Metallic
● ●	Tuxedo Black Metallic
	King Ranch
●	White Platinum Metallic Tri-Coat ²
●	Royal Red Metallic
●	Dark Blue Pearl Metallic
●	Tuxedo Black Metallic
	Limited
● ●	White Platinum Metallic Tri-Coat ²
● ●	Royal Red Metallic
● ●	Ingot Silver Metallic
● ●	Sterling Grey Metallic
● ●	Tuxedo Black Metallic

²Extra-cost option.

For more information on
Ford of Canada products and services,
please visit our website:



Our commitment to you... Peace-of-Mind Protection

- Basic Coverage:
3 years/60,000 km
- Powertrain Warranty:
5 years/100,000 km
- Corrosion Warranty:
5 years/unlimited distance
- Roadside Assistance:
5 years/100,000 km

Certain conditions apply. For more information on
these warranties and coverages, ask your local
Ford of Canada Dealer or visit ford.ca.

For prompt, courteous answers to your questions:

Ford Customer Relationship Centre
1-800-565-3673
Ford Credit Customer Service Centre
1-877-636-7346

Please note: The electronic version of the
Ford of Canada vehicle brochure is a condensed
version of the original printed version.

Competitive comparisons are based on 2009 competitive models,
publicly available information and Ford data at the time of printing
of the 2010 original printed version. Some features discussed may be
optional. Vehicles shown may contain optional equipment. Features
shown may be offered only in combination with other options or
subject to additional ordering requirements or limitations. Dimensions
shown may vary due to optional features and/or production variability.
Following publication of the 2010 original printed brochure, certain
changes in standard equipment, options and the like, or product delays
may have occurred which would not be included in these pages. Your
Ford of Canada Dealer is your best source for up-to-date information.
Ford Motor Company of Canada, Limited, reserves the right to change
product specifications at any time without incurring obligations. Colours
may not be exactly as illustrated. Please see your sales consultant for
specific colour and model availability. Please visit your local dealer or
ford.ca for complete vehicle details.

FORD EXTENDED SERVICE PLAN

For a purchase or lease, the Ford Extended Service Plan (ESP) gives you
"Peace-of-Mind" protection designed to cover key vehicle components
and help protect you from the cost of unexpected repairs. To add to your
peace of mind and help protect your investment beyond your New Vehicle
Basic Warranty, complement your ESP with a prepaid maintenance plan
that covers all required scheduled maintenance items for your vehicle and
8 wear items. Ask your Dealer for a Ford ESP, the only service contract
backed exclusively by Ford Motor Company of Canada, Limited, and
honoured at all Ford and Ford Lincoln Dealerships across North America.
Certain limitations and exclusions apply, see your Dealer for details.

FORD CREDIT

Get the ride you want. Whether you plan to lease or finance, you'll find
the choices that are right for you at Ford Credit. Ask your local Ford of
Canada Dealer for details or check us out at fordcredit.ca.



Escape & Escape Hybrid



Explorer



Sport Trac



Expedition & Expedition MAX