

ZOOM-ZOOM. FOREVER.

**MAZDA WARRANTY** The basic warranty on MAZDA6 covers all parts found to be factory defective for 3 years or 80,000 km, whichever comes first. Additional warranties cover powertrain components for a period of 5 years or 100,000 km, whichever comes first, body sheet metal perforation for 5 years and unlimited mileage and specific emission control components for up to 8 years or 128,000 km. Exclusions from coverage are limited to maintenance items or adjustments (repairs not requiring parts replacement) on vehicles over 12 months old and repairs due to normal wear and tear. Ask your Mazda Dealer for additional information.

**ROADSIDE ASSISTANCE PROGRAM** As part of our commitment to your total satisfaction, 2010 MAZDA6 owners are automatically enrolled in our Roadside Assistance Program. Roadside Assistance protects your MAZDA6 for the duration of the 3-year basic limited warranty. Should you require assistance during this period, our service will help to get your vehicle back on the road and minimize any inconvenience. For complete details on this program, see your Mazda Dealer.

**MAZDA MOBILITY ASSISTANCE PROGRAM** Mazda Canada believes that vehicle access is vital for everyone. Under this program, physically challenged customers who purchase or lease a new, unused Mazda vehicle may be eligible to receive assistance from Mazda Canada Inc. to aid with the cost of acquiring and installing adaptive driving aids on their vehicle. For complete details on this program, see your Mazda Dealer.

**MAZDA TEST-DRIVE EXPERIENCE** Exhilaration begins with the Mazda Test-Drive Experience - a uniquely designed road trip engineered to take you miles beyond the ordinary test-drive. Down local streets, on-ramps, highways and off-ramps. Through straightaways, S-curves and corners. It's all about putting a Mazda to the test under real-world conditions. It's about discovering the superb acceleration, braking, steering, handling and ride quality that every Mazda offers. And rediscovering that fun, connected-to-the-road feeling we call Zoom-Zoom.

**READY TO ROLL** Our pre-delivery commitment means every new Mazda is checked out, gassed up and fitted with floor mats.



For peace-of-mind motoring, we've created the Mazda Added Protection Plan (M.A.P.). M.A.P. complements your Mazda Limited Warranty for up to 7 years or 160,000 km, and protects you from unexpected repair expenses and the rising cost of repairs. All M.A.P. plans include Personal Budget and Repair Inflation Protection. In addition, all M.A.P. plans include Premium Roadside Assistance, which extends the roadside assistance coverage offered during the new-vehicle limited-warranty period throughout the M.A.P. term. The Premium Roadside Assistance offers Towing, Winching, Battery Boost, Out-of-Fuel Coverage, Tire Service, Lockout Service, Emergency Travel Expense Reimbursement and Travel Planning and Dealer Locator. Should you ever decide to sell your Mazda vehicle, M.A.P. is transferable to future owners and will enhance the resale value of your vehicle. The Mazda Added Protection Plan is fully backed and administered by Mazda Canada Inc. For more information, please contact your Mazda Dealer.



Ask your dealer about Mazda's competitive program for recent university and college graduates.

Product changes and options availability: Following publication of this brochure, certain changes in standard equipment, options, prices and the like, or product delays may have occurred which would not be included in these pages. Your Mazda Dealer is your best source for up-to-date information. Mazda reserves the right to change product specifications at any time without incurring obligations. Options and accessories shown or described in this brochure are available at extra cost and may be offered only in combination with other options or subject to additional ordering requirements or limitations. E. & O. E.



Get more detailed information on your MAZDA6. Check out our website at [www.mazda.ca](http://www.mazda.ca) for specifications and features, option packages, pricing, financing, to get a quote and find a dealer near you.

© 2009 Mazda Canada Inc., 55 Vogell Road, Richmond Hill, Ontario L4B 3K5 Printed in Canada Part No. 9999-92-M610-EN



Product group from well-managed forests, controlled sources and recycled wood or fiber  
www.fsc.org Cert no. SW-COC-1383  
© 1996 Forest Stewardship Council



2010 Mazda6  
Zoom-Zoom





Stop. **Take a listen.** You hear it everywhere. The double beat. The one-two cadence that propels us all from deep within. **Thump-thump. Goes the heart.** The boxer throws the powerful one-two; boxing's most feared combination. **Two quick claps of the hands and dancers prepare for perfection.** Snap your fingers two times and watch as everyone around gets ready to move. **Why do rock legends tap the microphone twice before melting your face?** What makes a thoroughbred's muscles respond to two clicks from a jockey's mouth? **This is no mere coincidence. The double beat lives on a deeper level. An emotional level. It's a universal tribal-like connection.** It's everywhere. And we've followed it for over 40 years. **Always building on it.** It's what drove us to make the MX-5 Miata, the best-selling roadster of all time. The MAZDASPEED3, one of the fastest front-wheel-drive cars on the planet. And the CX-9, 2008 North American Truck of the Year. **It's what stirs our soul. And what has led us to its most refined and re-imagined form yet. The 2010 MAZDA6.** We'll never stop listening. **Zoom-Zoom. Forever.**

**All diamond. No rough.** Impressive and praiseworthy. The MAZDA6 is everything a sedan should be, but rarely is. Powerful yet calm. Quiet yet stimulating. And stylishly nuanced. Named the 2009 Best New Family Car (\$22k - \$33k) by AJAC, MAZDA6 is a quick study in the marriage of technology and sophisticated design. Its elegant exterior is the hallmark of the subtle and not so subtle details inside. An ingenious and exhilarating performer, its 3.7 L, DOHC, V6 engine delivers a potent 272-hp, all without sacrificing its inspiring fuel economy. It also sports leather-trimmed seats and an ergonomic design that places effortless control at your fingertips - and your toes.





**1. Brighter Idea:** Xenon headlights, standard on GT-V6 and optional on GT-I4 with Luxury Package, project three times the light, last five times longer and use 30% - 40% less energy than Halogen headlights - for greater safety and peace of mind. **2. Room Additions:** Versatile 60/40-split fold-down rear seats with remote releases are standard on every MAZDA6. What could be more flat-out convenient when you have to haul additional, longer or larger cargo?\*



**3. Tailor-Made Trunk:** The cavernous trunk of the MAZDA6 provides a whopping 469 L of cargo space. The MAZDA6 trunk can easily swallow four standard suitcases. \*Please remember to properly secure all cargo.



**Start Here:** A convenient push-button start system is available on the MAZDA6 GT. It works with Mazda's intelligent key system (keyless entry and start) and enables you to fire up the engine with the touch of a button. No more ignition key hassles.



**360 Degrees Better:** The available Bose® 333-watt, 10-speaker Centerpoint® Surround Sound System creates stunning 360-degree synthesized surround sound music from regular CDs. Its neodymium speaker magnets and Nd® subwoofer optimize output while minimizing space and weight.



**Wireless Wizardry:** MAZDA6 GT is the only car in its class with available Bluetooth® hands-free phone and audio capabilities. Make calls, access voice mail, even listen to music - all hands free - via your Bluetooth-compatible cellphone or MP3 player.



**Aerodynamic styling that's beautiful from every angle.** Wind turbulence and drag. Unseen enemies that reduce efficiency and responsiveness. To combat these foes, we subjected MAZDA6 to 360 degrees of exhaustive wind tunnel testing. We even added an airflow management system with underbody shields and deflectors. Side mirrors and A-pillars boast sleek, graceful shapes sculpted to reduce air turbulence and wind noise. Finally, an innovative airless painting process that imparts a virtually flawless finish. Reflecting a quality that outshines expectations.

**Driver's seat? Sensory stimulation chamber would be more accurate.** The cabin of the MAZDA6 is a huge departure from the typical sport sedan. You'll notice something different when the sequential welcoming illumination softly rises to greet you. And you'll notice other thoughtful touches too. Like power-adjustable, heated front seats. More passenger room and rear-seat legroom. Automatic climate control with dual zones. Standard steering-wheel-mounted audio and cruise controls. And available navigation system. All ensure MAZDA6's cabin is as compelling as its performance.





## 2010 MAZDA6 ACCESSORIES | COLOURS

On the road, the best defence is often a good offence. So MAZDA6 was engineered to help you avoid trouble by instantly, almost intuitively, responding to your every input.



**Stopping Power:** Fade-resistant four-wheel disc brakes, Anti-lock Brake System (ABS) and Electronic Brake Force Distribution (EBFD) enhance driver confidence and optimize ride safety and driver control.



**Air Force:** Dual front air bags, front side-impact air bags and side-curtain air bags\*, with coverage for front and rear seats, are standard on MAZDA6.



**Dual Alerts:** When an object is detected in either blind spot, Mazda's Blind-Spot Monitoring System\*\* calculates its relative speed and distance. A warning light then appears in the side mirror. If a collision is possible, it also starts blinking and a warning chime sounds. (Optional on GT-I4 and standard on GT-V6 models.)

\*Always wear your seat belt and secure children in the rear seats in appropriate child restraints.  
\*\*Always check your mirrors. Beware of the traffic around you.

### ACCESSORIES



Pictured above from left to right: iPod adapter<sup>3</sup>, Mud guards, Auto-dimming mirror with compass and HomeLink®

- All-weather floor mats
- Cargo net
- Engine block heater
- Fog lights
- Front mask
- Hood deflector
- Raised rear spoiler
- Remote engine start
- Scuff plates with LED illumination
- SIRIUS Satellite Radio
- Wheel locks - Chrome (set of four)

For further information, please refer to the MAZDA6 Accessories Brochure. Mazda notes that all Genuine Mazda Accessories, if installed by your Mazda Dealer prior to or at an initial vehicle retail delivery, carry the same new-vehicle basic warranty as the MAZDA6.

### EXTERIOR COLOURS



COMET GREY MICA



DARK MAHOGANY METALLIC



GLACIER WHITE



BRILLIANT SILVER METALLIC



SANGRIA RED MICA



KONA BLUE MICA

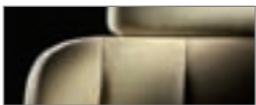


BLACK ONYX

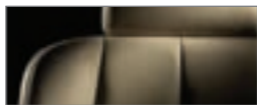
### COLOUR COMBINATIONS

	EXTERIOR		INTERIOR	
	GS (CLOTH)	GT (LEATHER)	GS (CLOTH)	GT (LEATHER)
Kona Blue Mica	Grey	Black	Grey	Black
Dark Mahogany Metallic	Beige	Beige	Beige	Beige
Comet Grey Mica	Black	Black	Black	Black
Brilliant Silver Metallic	Grey	Black	Grey	Black
Sangria Red Mica	Black	Black	Black	Black
Glacier White	Black	Black	Black	Black
Black Onyx	Black	Black	Black	Black

### INTERIOR COLOURS



BEIGE CLOTH



BEIGE LEATHER



BLACK CLOTH



BLACK LEATHER



GREY CLOTH

### MAZDA6 WHEELS



17" alloy wheels (GS)



18" alloy wheels (GT)



## 2010 MAZDA6 SPECIFICATIONS

ENGINE	GS-I4, GT-I4	GS-V6, GT-V6
Type	2.5 L DOHC 16-valve 4-cylinder	3.7 L DOHC 24-valve V6
Displacement	2,489 cc	3,726 cc
Compression ratio	9.7:1	10.3:1
Horsepower SAE net	170 @ 6,000 rpm	272 @ 6,250 rpm
Torque SAE net lb. ft.	167 @ 4,000 rpm	269 @ 4,250 rpm
Fuel system	Electronic Fuel Injection (EFI)	Electronic Fuel Injection (EFI)
Recommended fuel	Regular	Regular
DRIVETRAIN		
Type	Front engine/front-wheel drive	
Transmission	6-speed manual (I4) Optional: 5-speed Sport mode automatic with overdrive (I4) 6-speed Sport mode automatic with overdrive (V6)	

### 2010 MAZDA6 FEATURES

ENGINEERING FEATURES	GS-I4	GT-I4	GS-V6	GT-V6
2.5 L DOHC 16-valve 4-cylinder engine with Variable Valve Timing (VVT)	S	S	-	-
3.7 L DOHC 24-valve V6 engine with Variable Valve Timing (VVT)	-	-	S	S
6-speed manual transmission	S	S	-	-
5-speed Sport mode automatic transmission with overdrive	0	0	-	-
6-speed Sport mode automatic transmission with overdrive	-	-	S	S
Power-assisted 4-wheel disc brakes	S	S	S	S
Anti-lock Brake System (ABS) with Electronic Brake Force Distribution (EBFD)	S	S	S	S
Dynamic Stability Control (DSC)	CP	S	S	S
Traction Control System (TCS)	S	S	S	S
Front and rear stabilizer bars	S	S	S	S
WHEELS AND TIRES				
17" alloy wheels with Tire Pressure Monitoring System (TPMS)	S	-	S	-
18" alloy wheels with Tire Pressure Monitoring System (TPMS)	-	S	-	S
215/55R17 all-season tires	S	-	S	-
235/45R18 all-season tires	-	S	-	S
Temporary spare tire	S	S	S	S
EXTERIOR FEATURES				
Front bumper with black moulding	S	-	S	-
Front bumper with bright moulding	-	S	-	S
Front and rear body-coloured sport bumpers	S	S	S	S
Body-coloured door handles	S	S	S	S
Integrated body-coloured side sill extensions	S	S	S	S
Body-coloured power-operated door mirrors	S	S	S	S
Heated door mirrors	S	S	S	S
Auto-dimming door mirrors	-	S	-	S
Welcome foot light on door mirrors	-	LP	-	S
Automatic headlight shut-off	S	S	S	S
Automatic headlight on/off	CP	S	S	S
Headlights - Xenon (HID) with manual levelling feature	-	LP	-	S
LED taillights	-	S	S	S
Variable intermittent windshield wipers	S	-	-	-
Rain-sensing windshield wipers	CP	S	S	S
Fog lights	-	S	S	S
Dual exhaust outlets with integrated bright finishers	-	-	S	S
AUDIO				
AM/FM CD player with 4 speakers and 2 tweeters	S	-	S	-
AM/FM 6-disc in-dash CD changer with 4 speakers and 2 tweeters	-	S	-	-
10-speaker premium Bose® audio system with AM/FM 6-disc in-dash CD changer	-	LP	-	S
AudioPilot® noise compensation technology and Centerpoint® Surround Sound System	-	LP	-	S
MP3 functionality on CD player	S	S	S	S
Auxiliary audio input	S	S	S	S
SIRIUS Satellite Radio	-	LP	-	S

CHASSIS		
Frame	Monocoque	
Front suspension	Independent high-mount double-wishbone, coil springs and stabilizer bar	
Rear suspension	Independent E-type multi-link, coil springs and stabilizer bar	
Steering	Rack-and-pinion with engine-rpm-sensing variable power assist	
Minimum turning circle	10.8 m (curb-to-curb)	
Brakes	Power-assisted 4-wheel disc brakes Ventilated front discs: 299 mm Solid rear discs: 280 mm Anti-lock Brake System (ABS) with Electronic Brake Force Distribution (EBFD)	
Curb weight (kg)	I4: 1,486 (MT); 1,509 (AT)	V6: 1,610 (AT)
CAPACITIES		
Seating	5 persons	
Fuel tank (L)	70	

EXTERNAL DIMENSIONS (mm)			
Wheelbase	2,790	Overall width	1,840
Track (fr/fr)	1,595/1,595 (215/55R17 tires); 1,585/1,585 (235/45R18 tires)	Overall height	1,470
Overall length	4,940	Ground clearance	130
INTERNAL DIMENSIONS			
Headroom (fr/fr) (mm)	967/948 (with moonroof); 1,000/948 (without moonroof)	Cargo volume (L)	469
Legroom (fr/fr) (mm)	1,079/966	Passenger volume (L)	2,885
Shoulder room (fr/fr) (mm)	1,455/1,435	Total volume (L)	3,354
FUEL ECONOMY RATINGS* (L/100 km)			
	I4	V6	
	6MT	5AT Sport	6AT Sport
City	10.4	9.7	12.1
Highway	6.9	6.7	8.0

\*Estimated fuel economy. Your actual fuel consumption may vary.

AUDIO (cont'd)	GS-I4	GT-I4	GS-V6	GT-V6
Bluetooth® hands-free phone integration	-	S	-	S
Bluetooth® Audio Profile	-	S	-	S
Audio display screen	-	LP	-	S
Steering-wheel-mounted audio controls	S	S	S	S
COMFORT AND CONVENIENCE				
Air conditioning with micron air filter	S	S	S	S
Manual climate controls	S	-	S	-
Dual-zone automatic climate controls	-	S	-	S
Rear seat heater ducts	S	S	S	S
Steering-wheel-mounted cruise controls	S	S	S	S
Tilt and telescopic steering wheel	S	S	S	S
Power windows with driver's one-touch up and down feature	S	S	S	S
Power windows with passenger's one-touch up and down feature	CP	S	S	S
Remote keyless open feature for front windows and moonroof	CP	S	S	S
Power door locks	S	S	S	S
Remote keyless entry system with retractable key and trunk release (includes one transmitter)	S	S	S	-
Intelligent key system (keyless entry and start)	-	LP	-	S
Push-button ignition	-	LP	-	S
Internal fuel door, trunk and hood releases	S	S	S	S
Auto-dimming rearview mirror with HomeLink®	-	S	-	S
Dual front map lamps with sunglasses holder	S	S	S	S
Rear overhead dual map lamps	S	S	S	S
Delayed courtesy lights	S	S	S	S
Sequential welcoming illumination	-	S	-	S
Cargo area lamp	S	S	S	S
Illuminated covered driver's and passenger's vanity mirrors	S	S	S	S
12-volt power outlets (2)	S	S	S	S
Dual front and rear cup holders	S	S	S	S
Blind-Spot Monitoring System (BMS)	-	LP	-	S
Voice-activated navigation system with 7" display	-	0	-	0
Power glass moonroof with one-touch open and sunshade	CP	S	S	S
SEAT AND TRIM				
Reclining front bucket seats with slide adjustment	S	-	S	-
Driver's manual seat lifter	S	-	-	-
8-way power-adjustable driver's seat	CP	S	S	S
Driver's seat manual lumbar support	CP	S	S	S
Driver's seat memory position	-	-	-	S
4-way power-adjustable passenger's seat	-	LP	-	S
Heated front seats	-	S	-	S
60/40-split fold-down rear seatback with centre armrest	S	S	S	S
Trunk-mounted rear seatback release levers	S	S	S	S
Cloth upholstery	S	-	S	-

SEAT AND TRIM (cont'd)	GS-I4	GT-I4	GS-V6	GT-V6
Leather-trimmed upholstery	-	S	-	S
Leather-wrapped 3-spoke steering wheel	CP	S	S	S
Leather-wrapped shift knob	CP	S	S	S
INSTRUMENT PANEL AND STORAGE				
Black-out electroluminescent gauges	-	S	-	S
Tachometer, engine-coolant temperature gauge and fuel gauge	S	S	S	S
Exterior temperature indicator	S	S	S	S
Warning lights for low fuel level, low windshield washer fluid level, door ajar, check engine, oil pressure, volts, parking brake, high beam and safety belts	S	S	S	S
Trip computer	S	S	S	S
Front door storage pockets with bottle holders	S	S	S	S
Seatback pockets on front seats	S	S	S	S
Driver's side coin holder with mat and lid	S	S	S	S
Centre console with sliding armrest and storage box	-	S	-	S
Illuminated lockable glove compartment	S	S	S	S
SAFETY AND SECURITY				
Dual front air bags	S	S	S	S
Dual front side air bags	S	S	S	S
Dual side air curtains	S	S	S	S
Engine immobilizer theft-deterrent system	S	S	S	S
Anti-theft alarm system	S	S	S	S
Side-door impact-protection beams	S	S	S	S
Triple "H" construction	S	S	S	S
Whiplash-reducing adjustable front seat head restraints	S	S	S	S
Optimized brake and accelerator pedal layout (crushable box design)	S	S	S	S
3-point safety belts for all occupants	S	S	S	S
Height-adjustable front shoulder belt "B" pillar anchors	S	S	S	S
Driver's and front passenger's safety-belt pretensioners with force limiters	S	S	S	S
Child-safety rear door locks	S	S	S	S
ISOFIX child safety-seat anchors in rear seat (upper and lower type)	S	S	S	S

S = Standard 0 = Optional CP = Comfort Package LP = Luxury Package - = Not available

**Comfort Package:** Leather-wrapped 3-spoke steering wheel, leather-wrapped shift knob, Dynamic Stability Control (DSC), 8-way power-adjustable driver's seat, power glass moonroof, automatic headlight on/off, rain-sensing windshield wipers, driver's seat manual lumbar support, power windows with passenger's one-touch up and down feature and remote keyless open feature for front windows and moonroof. (Available on GS-I4.)

**Luxury Package:** Intelligent key system (keyless entry and start), push-button ignition, 10-speaker premium Bose® audio system, AudioPilot® noise compensation technology and Centerpoint® Surround Sound System, Xenon (HID) headlights with manual levelling feature, 4-way power-adjustable passenger's seat, Blind-Spot Monitoring System (BMS), welcome footlight on door mirrors, audio display screen and SIRIUS Satellite Radio. (Available on GT-I4.)

Apple and iPod are registered trademarks of Apple Inc.  
© Bose, © Centerpoint and © AudioPilot are registered trademarks of Bose Corporation.  
© HomeLink and the HomeLink house are registered trademarks of Johnson Controls, Inc.  
© Bluetooth is a registered trademark of Bluetooth SIG, Inc.

