

# 2012 GMC SIERRA HD

WE ARE PROFESSIONAL GRADE

**GMC**



2012 GMC SIERRA HD

## SIERRA HD: 100% GENUINE HEAVY-DUTY.

Most heavy-duty trucks look great on paper. Put them through a real workout, though, and they don't live up to the hype. Much-touted engines often don't deliver the big performance they promised. Exhaust brakes fail to get the job done. Frames twist. Brakes fade and stopping distances grow dangerously long after repeated hard stops. GMC's Sierra HDs are different. Built on the only full-length fully-boxed high-strength steel frames in the HD segment\*, they're engineered to take your biggest challenges in their stride. With the available Duramax® diesel engine and six-speed Allison® transmission, Sierra HDs put 397 horsepower and 765 pounds-feet of torque under your right foot. With a fifth-wheel hitch, Sierra 3500HD DRW can tow an unsurpassed\* – and unprecedented – 10,433 kg (23,000 lb.). With electronic aids like trailer sway control, hill hold assist, automatic grade braking and more, Sierra HDs also let you tackle massive jobs with confidence and poise. The 2012 Sierra HDs. They're the real deal.

\*Based on Ward's 2011 Large Pickup segmentation and latest published competitive information available at time of printing. Excludes other GM models.

### “Best Overall Heavy-Duty: 2012 GMC Sierra 3500”

– PickupTrucks.com

In the summer of 2011, PickupTrucks.com carried out a head-to-head comparison test of the Ram 3500 High Output Cummins, the Ford F-350 Power Stroke and the GMC Sierra 3500HD with the Duramax® Diesel V8. The tests included acceleration, braking, uphill climbs and downhill descents, most with extremely heavy trailers attached. The hands-down winner was the Sierra 3500HD, with first-place results in almost every performance category. For complete details, visit [PickupTrucks.com](http://PickupTrucks.com)

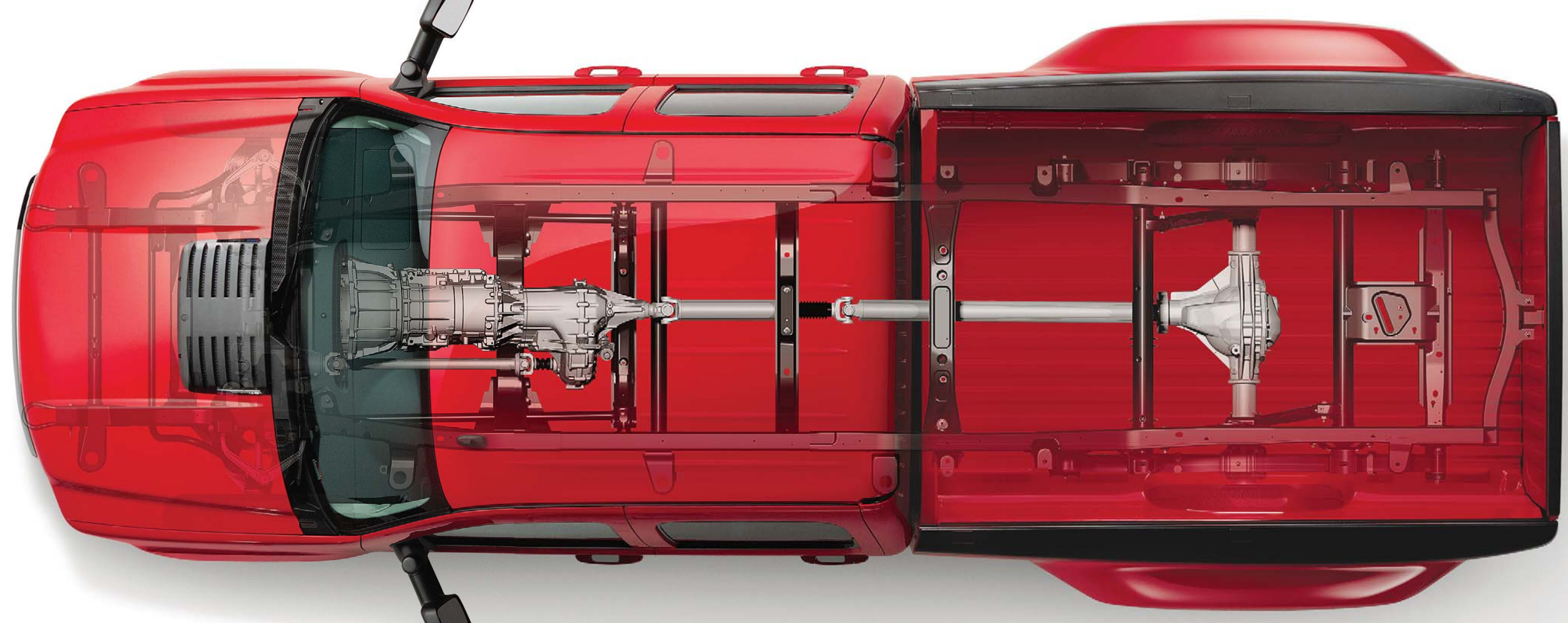


SIERRA 2500HD CREW CAB SLT STANDARD BOX 4X4, shown in Onyx Black with available equipment.

## NAILS SHOULD BE THIS TOUGH.

Every professional-grade Sierra HD pickup is seriously heavy-duty under the skin, where it counts most. The frames, suspensions, steering and braking systems have all been engineered to be the strongest and most durable in GMC history. New rear springs, shackles, cargo box mounts and strengthened cargo boxes enable the Sierra 3500HD equipped with a Duramax® diesel and a fifth-wheel trailer hitch to tow up to 10,433 kg (23,000 lb.) – the most in its class.\* The 2012 Sierra also leads its class in payload capacity\* with a 3273 kg (7215 lb.) rating from the 3500HD equipped with the Standard 6.0L Vortec™ V8 gas engine. Result? The most capable GMC pickup trucks ever.

\* Based on Ward's 2011 Large Pickup segmentation and latest published competitive information available at time of printing. Excludes other GM models.



### HIGH-STRENGTH STEEL BACKBONE

Every 2012 Sierra HD rides on a segment-exclusive high-strength steel frame featuring fully-boxed rails front-to-rear. The resulting structure is immensely strong and resistant to bending and twisting. It's a major reason why Sierra HD's top Ford Super Duty F-Series in diesel-powered fifth-wheel towing across the board, in every comparable configuration.\*\*

\*\* Based on comparably equipped 2012 Ford Super Duty. Maximum trailer weight rating is calculated assuming a properly equipped base vehicle, except for any options necessary to achieve the rating, plus driver. Weight of other optional equipment, passengers and cargo will reduce the maximum trailer weight that your vehicle can tow.

### SUPERIOR MOUNTING HARDWARE

Large engine and transmission mounts reduce vibration in the cab. Extended Cab and Crew Cab models also use hydraulic body mounts for increased isolation from vibration on rough roads.

### CONVENIENT 4-WHEEL DRIVE

4x4 models feature a proven 2-speed part-time transfer case with an automatic connect/disconnect mechanism in the front axle. That means you can shift on the fly from 2-HI to 4-HI in the comfort of your Sierra's cabin instead of kneeling in the snow and mud to lock your front hubs manually.

### PLOW-READY

Sierra's smooth-riding short-long arm/torsion bar independent front suspension features strong, lightweight forged-steel upper control arms and precision-machined cast iron lower control arms. The result is a front axle weight rating of up to 2721 kg (6000 lb.), so a snow plow can be fitted on all 4x4 models. The suspension trim height can also be easily adjusted to compensate for the weight of the plow. That means superior wheel-to-ground contact and better running ground clearance.

### INDUSTRY-EXCLUSIVE EATON® LOCKING REAR DIFFERENTIAL

Sierra is the only heavy-duty pickup to offer an Eaton® locking rear differential.† When one rear wheel starts turning about 100 rpm faster than the other, the differential automatically locks up to ensure that power goes to the wheel with better traction. The Eaton® locking rear differential is standard on SLT and Denali models and available on other models.

† Excludes other GM products.

### ASYMMETRICAL REAR LEAF SPRINGS

The leaf springs found in Sierra HD's rear suspension feature unequal front and rear spring half lengths. This design coupled with the front/rear mounting of the shock absorbers results in less axle hop during hard acceleration, more stability and improved traction control performance.

### STABILITRAK® ELECTRONIC STABILITY CONTROL

StabiliTrak® constantly monitors for lateral skids. When it detects one, it automatically steps in to help put you back in control by applying the appropriate brake(s). In many cases, StabiliTrak® ends the skid before you even know it's begun. Research shows that electronic stability control systems like StabiliTrak® reduce fatal single-vehicle light truck crashes by 63%.†† StabiliTrak® is standard on all Sierra HD models with single rear wheels.

†† According to information published by the US Department of Transportation's National Highway Traffic Safety Administration, July 2007.

## DURAMAX®: LEADING-EDGE DIESEL MUSCLE.

With 397 horsepower and 765 pounds-feet of torque, Sierra HD's available 6.6L Duramax® turbo diesel engine has all the muscle you need to handle the toughest jobs. It's also remarkably fuel-efficient,

### ENVIRONMENTALLY CONSCIOUS

To help minimize its impact on the environment, the Duramax® diesel V8 uses a non-toxic urea-based solution or Diesel Emissions Fluid (DEF) and a special catalytic converter to break down oxides of nitrogen (NOx) into harmless nitrogen gas and water vapour. Compared with other NOx-reducing systems, DEF allows for optimum fuel efficiency by increasing the range between Diesel Particulate Filter burn-off cycles up to 1100 km. Here are some additional facts about DEF:

- DEF is non-toxic, non-polluting, non-hazardous and non-flammable.
- DEF is readily available from a variety of retailers.
- The DEF refill interval is approximately 8000 km.\*

\*Estimate. Actual consumption may vary.

### B20-COMPATIBLE

The Duramax® engine has been engineered to run reliably on B20 fuel – a blend of 80 percent diesel and 20 percent biodiesel – as an alternative to conventional diesel fuel.

### PROVEN DURABILITY

Since the original Duramax® turbo diesel V8 was launched in 2000, more than 1.3 million units have been sold. It's a proven powerplant with a well-earned reputation for outstanding durability. Refinements to the latest version enhance oil film thickness and increase oil pressure at lower speeds, for even greater long-term reliability.

thanks to state-of-the-art diesel fuel injection technologies including common rail fuel delivery and high pressure Piezo fuel injectors. It's the most advanced diesel engine ever offered in a GMC truck.

### MASSIVE LOW-END TORQUE

The Duramax® engine produces its 765 lb.-ft. of peak torque at 1600 rpm – just above idle, right where you need it most when you're handling big loads and heavy trailers.

### FAST WINTER STARTS

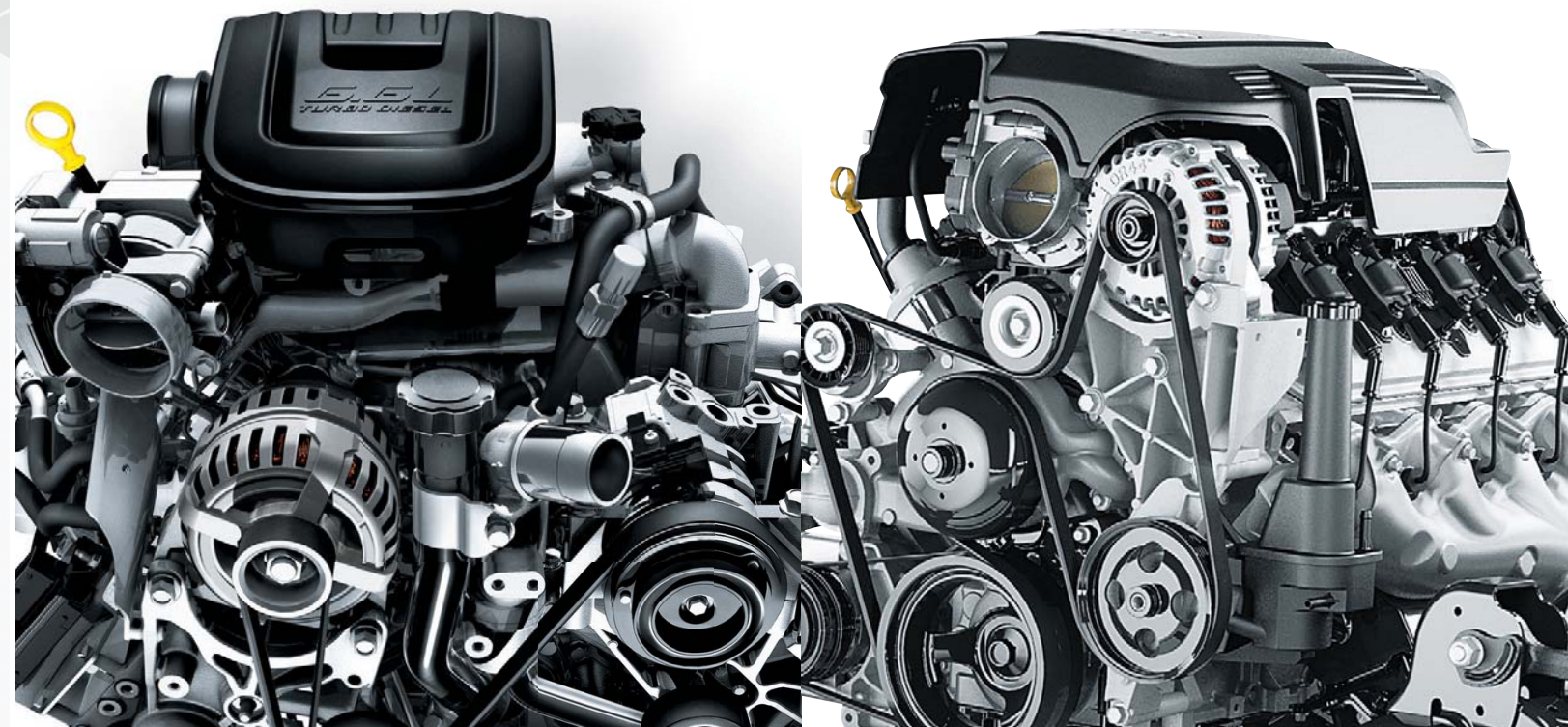
Even at temperatures in the -30°C range, the Duramax® diesel is ready to start in less than 3 seconds, thanks to advanced microprocessor-controlled glow plugs. Cold starting performance is further enhanced when the standard block heater is used.

### SMART EXHAUST BRAKE

When engaged by the driver, the exhaust brake feature increases back pressure in the exhaust to help slow the truck on downhill grades. The result is improved confidence and control, especially when hauling or towing heavy loads. It also helps reduce wear and tear on brake pads and rotors.

### ALLISON® 1000 TRANSMISSION

The Duramax® diesel V8 is teamed exclusively with a 6-speed automatic transmission by Allison®, a world leader in transmissions for commercial and military duty. Gear ratios and shift characteristics have been selected specifically to optimize the performance of the Duramax® engine. Tap-up/tap-down shifting, auto grade braking and tow/haul mode are standard features.



## VORTEC™: LEGENDARY PERFORMANCE.

Sierra HD's standard Vortec™ 6.0L V8 was specifically developed for heavy-duty applications, with a cast iron engine block and cast stainless steel exhaust manifolds engineered to stand up to extreme operating

### VARIABLE VALVE TIMING (VVT)

VVT adjusts the opening and closing of the intake and exhaust valves to optimize efficiency and performance across the engine's entire RPM range. The result is an ideal combination of smooth idling, abundant low-end torque and generous high-rev horsepower.

### HIGH-FLOW CYLINDER HEADS

The Vortec™ V8 features high-flow cylinder heads similar to those used in the Camaro and Corvette V8s. The result is increased horsepower without a high compression ratio that would require premium fuel.

### CAM-IN-BLOCK ARCHITECTURE

Proven cam-in-block architecture makes for a compact engine with fewer moving parts than more complex overhead-cam designs.

conditions. Other durability-boosting features include polymer-coated pistons, which reduce engine wear, and exhaust valves made of inconel, a super-alloy capable of withstanding very high temperatures.

### LOW-MAINTENANCE DESIGN

The Vortec™ V8 is engineered to keep maintenance costs and down-time to a minimum. The extended-life spark plugs only need changing every 160,000 km, and the engine coolant will last up to 240,000 km.\*\* The Vortec™ engine also features an oil life monitoring system, which calculates actual usage and indicates an oil change only when it's actually required.

\*\*Maintenance needs vary with different uses and driving conditions. Please refer to the vehicle Owner's Manual for more information.

### HYDRA-MATIC 6L90 TRANSMISSION

The Vortec™ 6.0L V8 is paired exclusively with a Hydra-Matic 6-speed automatic transmission fitted with an unusually wide range of gear ratios. First gear is exceptionally low, to maximize pulling power, while sixth gear is a very tall overdrive, for reduced engine speed, fuel consumption and engine noise at highway speeds. With a fifth-wheel hitch, the Vortec™/Hydra-Matic powertrain is capable of towing up to 6668 kg (14,700 lb.).

## HIGH STRENGTH MEETS LOW STRESS.

Massive capability is a key part of the Sierra HD formula. Another equally important element is advanced control. Every Sierra HD is equipped with a variety of high-tech systems designed to take the white knuckles out of big challenges. One such feature is Sierra's push-button-activated exhaust brake that can work in or out of tow/haul mode. An exhaust brake saves on brake and transmission wear by closing the engine's turbo-charger vanes, creating back pressure to engine-brake the truck. This reduces the potential for brake fade, increasing safety and brake life. The Duramax® exhaust brake and Allison® transmission work extraordinarily well together. They've been engineered that way from the start. They help make handling heavy loads and large trailers stress-free, even on steep downhill grades, so you can settle back and actually enjoy the drive.



SIERRA 3500HD CREW CAB SLT LONG BOX 4X4 with dual rear wheels, shown in Fire Red with available equipment.

### SIERRA HD GROSS COMBINATION WEIGHT RATINGS (GCWR)

GCWR kg (lb.)	7258 (16,000)	9299 (20,500)	11,113 (24,500)	13,835 (30,500)
ENGINE	AXLE RATIO REQUIRED (AUTOMATIC TRANSMISSION STANDARD)			
Vortec™ 6.0L V8 (L96)	3.73	4.10		
Duramax® 6.6L V8 (LML)			3.73	3.73*

\* Rating for 3500HD models with Dual Rear Wheels (DRW).

### TRAILER SWAY CONTROL

Any time this system detects trailer sway, it activates individual truck and/or trailer brakes and reduces engine power, if necessary, to bring the trailer back under control and keep it on its intended path. Included on all models with single rear wheels.

### HILL HOLD ASSIST

This feature makes it easier to move off smoothly from a stop on grades of about 5 percent or more. To keep your truck and trailer from rolling backwards when you release the brake pedal, it automatically holds the brakes for an additional 1.5 seconds or until you press the accelerator. Included on all models with single rear wheels.

### TRAILER BRAKE CONTROL

The available integrated trailer brake control system is activated via a switch mounted on the dash. The system measures brake force and applies the trailer brakes as needed.

### BUILT-IN 5TH-WHEEL PREP

With pre-drilled access holes in the rear frame section, Sierra HD makes it easy to install the 5th-wheel or gooseneck-style hitch of your choice. You can also specify an available 8-way wiring harness that's conveniently routed to the front of the pickup box.

### TRANSMISSION GRADE BRAKING

Both Sierra HD 6-speed automatic transmissions include an automatic grade braking feature. When the transmission detects a downhill grade, it will automatically shift down a gear when the brakes are applied to provide additional engine braking for improved speed control and reduced brake wear.

SIERRA DENALI HD: IT'S GOT IT ALL.



Sierra Denali HD combines genuine heavy-duty engineering and capability with all the style, sophistication and luxury the Denali name has come to stand for. For 2012, the available Denali models include a 2500HD Crew Cab with a standard box, a 3500HD Crew Cab with a standard box on single rear wheels and a 3500HD Crew Cab with a long box on dual rear wheels.

EXTERIOR FEATURES

- Denali-specific full chrome grille
- Deluxe bodyside mouldings with chrome top insert
- Chrome door handles
- Polished aluminum Denali wheels
- Body-colour front and rear bumpers
- EZ Lift tailgate with lock
- Rear vision camera
- Ultrasonic rear parking assist
- Underbody skid plates.

INTERIOR FEATURES

- Full-featured, heated and cooled front bucket seats with leather inserts, power 10-way seat adjusters and a 2-position driver's memory function
- Heated, leather-wrapped steering wheel with woodgrain trim
- Auto-dimming mirror with rear vision camera display
- Removable colour-keyed carpeted floor mats
- Power adjustable pedals
- Audio system adds an in-dash 6-disc CD changer with MP3 compatibility
- Universal home remote
- Seat-mounted and roof-rail-mounted side-impact airbags with rollover sensor on SRW models.

DENALI HD CAPABILITIES - Max. kg (lb.)

	2500HD Crew Cab standard box 4x4		3500HD Crew Cab standard box 4x4 SRW		3500HD Crew Cab long box 4x4 DRW	
	Gas	Diesel	Gas	Diesel	Gas	Diesel
GVWR	4309 (9500)	4536 (10,000)	4899 (10,800)	5216 (11,500)	5897 (13,000)	5897 (13,000)
Payload	1315 (2899)	1154 (2545)	1850 (4078)	1825 (4024)	2587 (5703)	2263 (4989)
Conventional trailer rating	5897 (13,000)	5897 (13,000)	5897 (13,000)	5897 (13,000)	5897 (13,000)	8165 (18,000)
5th-Wheel trailer rating	6214 (13,700)	7076 (15,600)	6169 (13,600)	7620 (16,800)	5897 (13,000)	10,115 (22,300)



SIERRA 3500HD CREW CAB DENALI LONG BOX 4X4 with dual rear wheels, shown in Onyx Black with available equipment.

WELCOME TO YOUR NEW OFFICE.



A heavy-duty pickup isn't just transportation. It's a workplace for you and your crew. That's why Sierra HD offers space for up to six people (depending on cab configuration), along with lots of storage compartments for gloves, tools, mobile phones and plans. There are multiple accessory power outlets, too, so you can always charge your laptop, even when you're in the middle of nowhere. Sierra HDs also include a host of thoughtful standard features, like an engine hour meter and oil life monitoring system. 2500HD models include a tire pressure monitoring system (except spare). These are features that help you keep your truck in top condition.

#### ONSTAR®

Every 2012 Sierra HD comes standard with the convenience, safety and security of the revolutionary OnStar® system and 6 months of the Directions & Connections Plan with Turn by Turn Navigation\*. OnStar® offers a wide range of invaluable services, including hands-free calling, stolen vehicle assistance and automatic crash response.

#### ONSTAR REMOTELINK™

A new feature for 2012, the OnStar RemoteLink™ app puts the power of OnStar® right in the palm of your hand. OnStar RemoteLink™ allows you to perform a series of functions remotely from your iPhone® or select Android™ devices. Download and register the app at [onstar.ca](http://onstar.ca) and you'll have access to the following functions, regardless of whether your Sierra is across the street or across the country:

- Lock/unlock your doors
- Start your engine remotely (if so equipped)
- Activate your horn and lights to help you find your vehicle
- View real-time fuel information (range to empty, fuel remaining, current fuel consumption and lifetime fuel consumption)
- Check your tire pressure and remaining oil life
- Access your OnStar® account information
- Contact an OnStar® Advisor, Roadside Assistance or your preferred GMC dealer.

#### DVD NAVIGATION

When you're on unfamiliar ground, Sierra HD's available DVD navigation system can provide directions to your destination. You may never have to stop and ask for directions again.

#### REAR DVD ENTERTAINMENT

Sierra HD's available rear DVD entertainment system is the perfect way to keep your passengers happy on longer trips. Features include a DVD player with remote control, auxiliary input jacks and 2 sets of wireless headphones. Available in Crew Cabs.

#### COMFORTABLE AND QUIET

Say "HD pickup" and many people anticipate a harsh and noisy ride. Sierra HDs defy expectations with a smooth-riding independent front suspension and surprisingly low levels of road, wind and engine noise.

\* Visit [onstar.ca](http://onstar.ca) for coverage map, details and system limitations. Services vary by model and conditions. OnStar® acts as a link to existing emergency providers.

**01** The 2012 Sierra HDs offer convenient storage for all sorts of small items. SLE models feature a 40/20/40 split-bench front seat with a centre armrest storage compartment capable of handling 6.1 litres of gear.

**02** Lift the centre seat cushion of Sierra SLE's 40/20/40 split-bench front seat and you'll discover a lockable 9.1 litre compartment complete with an auxiliary power outlet.

**03** WT and SLE models feature a convenient dual glovebox design which helps keep small cargo items organized and out of sight.



# SIERRA HD MODEL SELECTOR

SERIES	Cab Type	Model Number	Engine Type	Drivetrain	Box Length (ft. in.)	Wheelbase mm (in.)	GVWR Max. kg (lb.)	Payload Max. kg (lb.)	Gross Towing Capacity* Max. kg (lb.)		
2500HD	Regular Cab	C20903	Vortec 6.0L Gas	2WD	8'	3396 (133.7)	4218 (9300)	1665 (3670)	6668 (14,700)		
		C20903	Vortec 6.0L Gas	2WD	8'	3396 (133.7)	4536 (10,000)	1911 (4212)	4536 (10,000)		
		C20903	Duramax 6.6L Diesel	2WD	8'	3396 (133.7)	4490 (9900)	1556 (3431)	8074 (17,800)		
		K20903	Vortec 6.0L Gas	4x4	8'	3396 (133.7)	4309 (9500)	1605 (3538)	6532 (14,400)		
		K20903	Duramax 6.6L Diesel	4x4	8'	3396 (133.7)	4490 (9900)	1397 (3079)	7938 (17,500)		
	Extended Cab	C20753	Vortec 6.0L Gas	2WD	6'6"	3663 (144.2)	3663 (144.2)	4309 (9500)	1575 (3473)	6486 (14,300)	
		C20753	Duramax 6.6L Diesel	2WD	6'6"	3663 (144.2)	3663 (144.2)	4536 (10,000)	1431 (3154)	7938 (17,500)	
		K20753	Vortec 6.0L Gas	4x4	6'6"	3663 (144.2)	3663 (144.2)	4309 (9500)	1447 (3189)	6350 (14,000)	
		K20753	Duramax 6.6L Diesel	4x4	6'6"	3663 (144.2)	3663 (144.2)	4536 (10,000)	1284 (2830)	7802 (17,200)	
		C20953	Vortec 6.0L Gas	2WD	8'	4018 (158.2)	4018 (158.2)	4309 (9500)	1523 (3358)	6441 (14,200)	
		C20953	Duramax 6.6L Diesel	2WD	8'	4018 (158.2)	4018 (158.2)	4536 (10,000)	1368 (3015)	7893 (17,400)	
		K20953	Vortec 6.0L Gas	4x4	8'	4018 (158.2)	4018 (158.2)	4309 (9500)	1486 (3275)	6305 (13,900)	
		K20953	Duramax 6.6L Diesel	4x4	8'	4018 (158.2)	4018 (158.2)	4536 (10,000)	1236 (2725)	7484 (16,500)	
		Crew Cab	C20743	Vortec 6.0L Gas	2WD	6'6"	3904 (153.7)	3904 (153.7)	4309 (9500)	1518 (3347)	6441 (14,200)
			C20743	Duramax 6.6L Diesel	2WD	6'6"	3904 (153.7)	3904 (153.7)	4536 (10,000)	1378 (3037)	7893 (17,400)
			K20743	Vortec 6.0L Gas	4x4	6'6"	3904 (153.7)	3904 (153.7)	4309 (9500)	1391 (3066)	6305 (13,900)
			K20743	Duramax 6.6L Diesel	4x4	6'6"	3904 (153.7)	3904 (153.7)	4536 (10,000)	1227 (2706)	7575 (16,700)
	K20743/Denali		Vortec 6.0L Gas	4x4	6'6"	3904 (153.7)	3904 (153.7)	4309 (9500)	1315 (2899)	6214 (13,700)	
	K20743/Denali		Duramax 6.6L Diesel	4x4	6'6"	3904 (153.7)	3904 (153.7)	4536 (10,000)	1154 (2545)	7076 (15,600)	
	C20943		Vortec 6.0L Gas	2WD	8'	4260 (167.7)	4260 (167.7)	4309 (9500)	1473 (3247)	6396 (14,100)	
	C20943		Duramax 6.6L Diesel	2WD	8'	4260 (167.7)	4260 (167.7)	4536 (10,000)	1330 (2932)	7802 (17,200)	
	K20943		Vortec 6.0L Gas	4x4	8'	4260 (167.7)	4260 (167.7)	4490 (9900)	1499 (3305)	6260 (13,800)	
	K20943		Duramax 6.6L Diesel	4x4	8'	4260 (167.7)	4260 (167.7)	4536 (10,000)	1158 (2552)	7076 (15,600)	
	3500HD-SRW**		Regular Cab	C30903	Vortec 6.0L Gas	2WD	8'	3396 (133.7)	4717 (10,400)	2098 (4625)	6577 (14,500)
				K30903	Vortec 6.0L Gas	4x4	8'	3396 (133.7)	4854 (10,700)	2000 (4409)	6441 (14,200)
		K30903		Duramax 6.6L Diesel	4x4	8'	3396 (133.7)	5171 (11,400)	2080 (4585)	7893 (17,400)	
		Extended Cab	C30953	Vortec 6.0L Gas	2WD	8'	4018 (158.2)	4018 (158.2)	4854 (10,700)	2015 (4443)	6350 (14,000)
			C30953	Duramax 6.6L Diesel	2WD	8'	4018 (158.2)	4018 (158.2)	5080 (11,200)	2023 (4459)	7847 (17,300)
			K30953	Vortec 6.0L Gas	4x4	8'	4018 (158.2)	4018 (158.2)	4990 (11,000)	2021 (4455)	6214 (13,700)
K30953			Duramax 6.6L Diesel	4x4	8'	4018 (158.2)	4018 (158.2)	5262 (11,600)	1948 (4295)	7666 (16,900)	
Crew Cab		C30743	Vortec 6.0L Gas	2WD	6'6"	3904 (153.7)	3904 (153.7)	4763 (10,500)	1899 (4187)	6350 (14,000)	
		C30743	Duramax 6.6L Diesel	2WD	6'6"	3904 (153.7)	3904 (153.7)	5035 (11,100)	1834 (4044)	7802 (17,200)	
		K30743	Vortec 6.0L Gas	4x4	6'6"	3904 (153.7)	3904 (153.7)	4899 (10,800)	1901 (4190)	6214 (13,700)	
		K30743	Duramax 6.6L Diesel	4x4	6'6"	3904 (153.7)	3904 (153.7)	5216 (11,500)	1871 (4125)	7711 (17,000)	
		K30743/Denali	Vortec 6.0L Gas	4x4	6'6"	3904 (153.7)	3904 (153.7)	4899 (10,800)	1850 (4078)	6169 (13,600)	
		K30743/Denali	Duramax 6.6L Diesel	4x4	6'6"	3904 (153.7)	3904 (153.7)	5216 (11,500)	1825 (4024)	7620 (16,800)	
		C30943	Vortec 6.0L Gas	2WD	8'	4260 (167.7)	4260 (167.7)	4854 (10,700)	1954 (4308)	6305 (13,900)	
		C30943	Duramax 6.6L Diesel	2WD	8'	4260 (167.7)	4260 (167.7)	5171 (11,400)	1935 (4266)	7847 (17,300)	
		K30943	Vortec 6.0L Gas	4x4	8'	4260 (167.7)	4260 (167.7)	4990 (11,000)	1935 (4266)	6169 (13,600)	
		K30943	Duramax 6.6L Diesel	4x4	8'	4260 (167.7)	4260 (167.7)	5262 (11,600)	1879 (4143)	7620 (16,800)	
		3500HD-DRW**	Regular Cab	C30903	Vortec 6.0L Gas	2WD	8'	3396 (133.7)	6078 (13,400)	3273 (7215)	6396 (14,100)
K30903	Vortec 6.0L Gas			4x4	8'	3396 (133.7)	5806 (12,800)	2857 (6299)	6260 (13,800)		
K30903	Duramax 6.6L Diesel			4x4	8'	3396 (133.7)	5897 (13,000)	2620 (5775)	10,433 (23,000)		
Extended Cab	C30953		Vortec 6.0L Gas	2WD	8'	4018 (158.2)	4018 (158.2)	5897 (13,000)	2867 (6321)	6169 (13,600)	
	C30953		Duramax 6.6L Diesel	2WD	8'	4018 (158.2)	4018 (158.2)	5897 (13,000)	2532 (5583)	10,342 (22,800)	
	K30953		Vortec 6.0L Gas	4x4	8'	4018 (158.2)	4018 (158.2)	5897 (13,000)	2737 (6033)	6078 (13,400)	
	K30953		Duramax 6.6L Diesel	4x4	8'	4018 (158.2)	4018 (158.2)	5897 (13,000)	2392 (5273)	10,251 (22,600)	
Crew Cab	C30943		Vortec 6.0L Gas	2WD	8'	4260 (167.7)	4260 (167.7)	5897 (13,000)	2811 (6198)	6124 (13,500)	
	C30943		Duramax 6.6L Diesel	2WD	8'	4260 (167.7)	4260 (167.7)	5897 (13,000)	2414 (5321)	10,342 (22,800)	
	K30943		Vortec 6.0L Gas	4x4	8'	4260 (167.7)	4260 (167.7)	5897 (13,000)	2656 (5856)	6169 (13,600)	
	K30943		Duramax 6.6L Diesel	4x4	8'	4260 (167.7)	4260 (167.7)	5897 (13,000)	2328 (5133)	10,161 (22,400)	
	K30943/Denali		Vortec 6.0L Gas	4x4	8'	4260 (167.7)	4260 (167.7)	5897 (13,000)	2587 (5703)	6078 (13,400)	
K30943/Denali	Duramax 6.6L Diesel	4x4	8'	4260 (167.7)	4260 (167.7)	5897 (13,000)	2263 (4989)	10,115 (22,300)			

\* Ratings are for models equipped with a 5th-wheel (gooseneck) hitch \*\* SRW = Single Rear Wheels (credit option). DRW = Dual Rear Wheels (standard equipment).

# SIERRA HD TRAILERING

ENGINE	BALL HITCH TRAILERING				FIFTH-WHEEL TRAILERING			
	Vortec™ 6.0L V8 (L96)*		Duramax® 6.6L V8 Turbo Diesel (LML)		Vortec™ 6.0L V8 (LY6)*		Duramax® 6.6L V8 Turbo Diesel (LML)	
Horsepower @ rpm Torque (lb.-ft.) @ rpm	360 @ 5400 380 @ 4200		397 @ 3000 765 @ 4200		360 @ 5400 380 @ 4200		397 @ 3000 765 @ 1600	
AUTOMATIC TRANSMISSION	6-speed (6L90)				6-speed Allison®			
MODEL	Max. Trailer Weight kg (lb.)	Axle Ratio Required	Max. Trailer Weight kg (lb.)	Axle Ratio Required	Max. Trailer Weight kg (lb.)	Axle Ratio Required	Max. Trailer Weight kg (lb.)	Axle Ratio Required
<b>2500HD</b>								
C20903 – Regular Cab	4627 (10,200)	3.73	5897 (13,000)	3.73	4627 (10,200)	3.73	8074 (17,800)	3.73
8' Long Box, 2WD	5897 (13,000)	4.10	4536 (10,000)**	3.73	6668 (14,700)	4.10		
C20753 – Extended Cab	4445 (9800)	3.73	5897 (13,000)	3.73	4445 (9800)	3.73	7938 (17,500)	3.73
6' 6" Standard Box, 2WD	5897 (13,000)	4.10			6486 (14,300)	4.10		
C20953 – Extended Cab	4400 (9700)	3.73	5897 (13,000)	3.73	4400 (9700)	3.73	7893 (17,400)	3.73
8' Long Box, 2WD	5897 (13,000)	4.10			6441 (14,200)	4.10		
C20743 – Crew Cab	4400 (9700)	3.73	5897 (13,000)	3.73	4400 (9700)	3.73	7893 (17,400)	3.73
6' 6" Standard Box, 2WD	5897 (13,000)	4.10			6441 (14,200)	4.10		
C20943 – Crew Cab	4355 (9600)	3.73	5897 (13,000)	3.73	4355 (9600)	3.73	7802 (17,200)	3.73
8' Long Box, 2WD	5897 (13,000)	4.10			6396 (14,100)	4.10		
K20903 – Regular Cab	4491 (9900)	3.73	5897 (13,000)	3.73	4491 (9900)	3.73	7938 (17,500)	3.73
8' Long Box, 4x4	5897 (13,000)	4.10			6532 (14,400)	4.10		
K20753 – Extended Cab	4309 (9500)	3.73	5897 (13,000)	3.73	4309 (9500)	3.73	4802 (10,700)	3.73
6' 6" Standard Box, 4x4	5897 (13,000)	4.10			6350 (14,000)	4.10		
K20953 – Extended Cab	4264 (9400)	3.73	5897 (13,000)	3.73	4264 (9400)	3.73	7484 (16,500)	3.73
8' Long Box, 4x4	5897 (13,000)	4.10			6305 (13,900)	4.10		
K20743 – Crew Cab	4264 (9400)	3.73	5897 (13,000)	3.73	4264 (9400)	3.73	7575 (16,700)	3.73
6' 6" Standard Box, 4x4	5897 (13,000)	4.10			6305 (13,900)	4.10		
K20743 – Crew Cab – Denali	4218 (9300)	3.73	5897 (13,000)	3.73	4218 (9300)	3.73	7076 (15,600)	3.73
6' 6" Standard Box, 4x4	5897 (13,000)	4.10			6214 (13,700)	4.10		
K20943 – Crew Cab	4218 (9300)	3.73	5897 (13,000)	3.73	4218 (9300)	3.73	7076 (15,600)	3.73
8' Long Box, 4x4	5897 (13,000)	4.10			6260 (13,800)	4.10		
<b>3500HD with Single Rear Wheels (SRW)</b>								
C30903 – Regular Cab	5897 (13,000)	4.10			6577 (14,500)	4.10		
8' Long Box, 2WD								
C30953 – Extended Cab	4309 (9500)	3.73	5897 (13,000)	3.73	4309 (9500)	3.73	7847 (17,300)	3.73
8' Long Box, 2WD	5897 (13,000)	4.10			6350 (14,000)	4.10		
C30743 – Crew Cab	4309 (9500)	3.73	5897 (13,000)	3.73	4309 (9500)	3.73	7802 (17,200)	3.73
6' 6" Standard Box, 2WD	5897 (13,000)	4.10			6350 (14,000)	4.10		
C30943 – Crew Cab	4264 (9400)	3.73	5897 (13,000)	3.73	4264 (9400)	3.73	7847 (17,300)	3.73
8' Long Box, 2WD	5897 (13,000)	4.10			6305 (13,900)	4.10		
K30903 – Regular Cab	4400 (9700)	3.73	5897 (13,000)	3.73	4400 (9700)	3.73	7893 (17,400)	3.73
8' Long Box, 4x4	5897 (13,000)	4.10			6441 (14,200)	4.10		
K30953 – Extended Cab	4173 (9200)	3.73	5897 (13,000)	3.73	4173 (9200)	3.73	7666 (16,900)	3.73
8' Long Box, 4x4	5897 (13,000)	4.10			6214 (13,700)	4.10		
K30743 – Crew Cab	4173 (9200)	3.73	5897 (13,000)	3.73	4173 (9200)	3.73	7711 (17,000)	3.73
6' 6" Standard Box, 4x4	5897 (13,000)	4.10			6214 (13,700)	4.10		
K30743 – Crew Cab – Denali	4128 (9100)	3.73	5897 (13,000)	3.73	4128 (9100)	3.73	7620 (16,800)	3.73
6' 6" Standard Box, 4x4	5897 (13,000)	4.10			6169 (13,600)	4.10		
K30943 – Crew Cab	4128 (9100)	3.73	5897 (13,000)	3.73	4128 (9100)	3.73	7620 (16,800)	3.73
8' Long Box, 4x4	5897 (13,000)	4.10			6169 (13,600)	4.10		
<b>3500HD with Dual Rear Wheels (DRW)</b>								
C30903 – Regular Cab	4355 (9600)	3.73			4355 (9600)	3.73		
8' Long Box, 2WD	6396 (14,100)	4.10			6396 (14,100)	4.10		



# GMC SIERRA HD STANDARD & OPTIONAL FEATURES

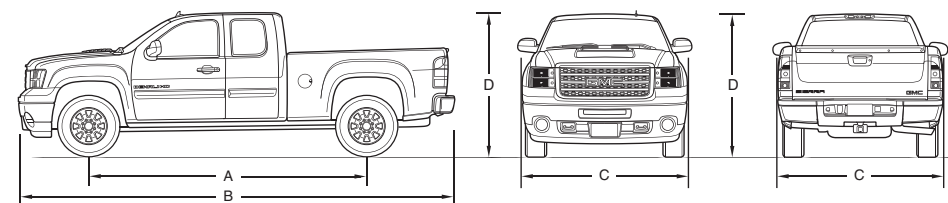
SAFETY AND SECURITY	WT	SLE	SLT	DENALI
<b>Airbags</b> – single stage, driver and front-passenger, frontal – seat-mounted side-impact, driver and right front passenger for thorax and pelvic protection – SRW models only – roof rail mounted side head curtain for all outboard seating positions with rollover sensor – SRW models only	S 0 0	S 0 0	S 0 0	S S S
<b>OnStar® In-Vehicle Communications and Assistance Service</b> – includes 6 months of the Directions & Connections Plan with Turn-by-Turn Navigation* and OnStar RemoteLink™	S	S	S	S
<b>Safety restraints</b> – LATCH (Lower Anchors and top Tethers for Children) – Ext. and Crew Cab only – top tether anchor (Regular Cab only)	S S	S S	S –	S –
<b>Side-Guard Door Beams</b>	S	S	S	S
<b>StabiliTrak®</b> – electronic stability control system with proactive roll avoidance, electronic trailer sway control, hill hold assist and traction control	S <sup>1</sup>	S <sup>1</sup>	S <sup>1</sup>	S <sup>1</sup>
<b>Theft-deterrent system</b> – electronic immobilizer	S	S	S	S
<b>MECHANICAL</b>				
<b>Air cleaner</b> – high capacity	S	S	S	S
<b>Alternator</b> – 125 amp – 160 amp, for Vortec™ 6.0L V8 – dual 125 amp, for Duramax® 6.6L Turbo Diesel	S 0 0	S 0 0	S 0 0	S 0 0
<b>Battery</b> – auxiliary, for Vortec™ 6.0L V8	0	0	0	0
<b>Brakes</b> – hydro-boost power, 4-wheel disc with anti-lock braking system (ABS)	S	S	S	S
<b>Dual Rear Wheels (DRW)</b> – 3500HD (except Crew Cab standard box models)	S	S	S	S
<b>Single Rear Wheels (SRW); 3500HD</b> – Includes StabiliTrak® Electronic Stability Control System. Deletes dual rear wheels, roof marker lights and chrome wheel covers and centre caps	0	0	0	0
<b>Engine</b> – Vortec™ 6.0L V8 FlexFuel capable with Variable Valve Timing (All models), Horsepower: 360 @ 5400 rpm with 2500HD; 322 @ 4400 rpm with 3500HD; Torque: 380 lb.-ft. @ 4200 rpm – Duramax® 6.6L Turbo Diesel; Horsepower: 397 @ 3000 rpm; Torque: 765 lb.-ft. @ 1600 rpm. Includes dual 730 CCA batteries, block heater and cover for grille and front bumper opening for winter weather – Block heater (included with Duramax® 6.6L Turbo Diesel)	S 0 0	S 0 0	S 0 0	S 0 0
<b>Heavy-Duty Enhanced Cooling Package</b> – includes external transmission and engine oil coolers, heavy-duty radiator and electric cooling fan	S	S	S	S
<b>Locking differential</b> – rear (standard on all 3500HD models)	0	0	S	S
<b>Snow Plow Prep Provisions</b> – includes 15 amp power for backup and roof emergency light, 160 amp alternator with Vortec™ 6.0L V8 engine, dual 125 amp alternators with Duramax® 6.6L Turbo Diesel, forward lamp wiring harness, 85 mm (3.35") access hole with grommet in front of dash panel, roof beacon lamp provisions with switch in the overhead console, instrument panel jumper wiring harness for electric brake controller, and skid plate package. Available on 4x4 models only	0	0	0	0
<b>Steering</b> – power recirculating ball	S	S	S	S
<b>Suspension</b> – Z85 Handling/Trailering, torsion bar front suspension with heavy-duty monotube shock absorbers – Z71 Off-Road, includes off-road jounce bumpers, heavy-duty monotube shock absorbers, skid plates and Z71 decals	S –	S 0 <sup>2</sup>	S 0 <sup>2</sup>	S 0 <sup>2</sup>
<b>Trailering Special Equipment Package</b> – includes weight-distributing trailer hitch platform with a 2.5-inch receiver with a 2-inch adapter. Also includes a 7-wire harness with independently fused trailering circuits mated to a 7-way sealed connector and 4 blunt-cut wires in the instrument panel for an aftermarket trailer brake controller (except when equipped with optional integrated trailer brake control) and a lead for a centre high-mounted stoplight	0	0	S	S
<b>Trailer electric brake controller</b>	0	0	S	S
<b>Trailer wiring provisions</b> – for camper or fifth wheel hitch, includes additional 8-way wiring harness to front of pickup box	0	0	0	0
<b>Transfer case 4x4 models</b> – lever-operated, 2-speed part-time – 2-speed with electronic rotary dial	S –	– S	– S	– S
<b>Transmission</b> – 6-speed automatic (model 6L90) with 2 overdrives, tap up/tap down shift control and Tow/Haul mode used on models equipped with the Vortec™ 6.0L V8 engine – Allison® 1000 Series 6-speed automatic with tap-shift range selection, Tow/Haul mode and engine grade braking is required with the 6.6L V8 Duramax® Diesel engine	S	S	S	S
<b>Vehicle starter system</b> – remote	–	0 <sup>3</sup>	S	S

EXTERIOR	WT	SLE	SLT	DENALI
<b>Bumper</b> – front chrome with black top cap – front chrome with body-coloured top cap – rear, chrome with step pad – front, colour-keyed fascia – rear, body-coloured with step pad	S – – – –	– S S – –	– S S – –	– – S S
<b>Cargo management pickup box</b> – includes aluminum front and side C-channel rails in pickup box with 4 adjustable tie-down hooks	0	0	0	0
<b>Door handles</b> – black – body-coloured – chrome	S – –	S – –	– S –	– S S
<b>Front license plate provisions</b> – included with vehicles shipped to British Columbia, Manitoba, New Brunswick, Ontario and Newfoundland	0	0	0	0
<b>Glass</b> – Solar-Ray, tinted – deep-tinted, all windows behind front doors	S 0	S S	S S	S S
<b>Grille</b> – moulded plastic with chrome surround – chrome horizontal bars with chrome surround – Denali specific, full chrome	S – –	– S –	– S –	– – S
<b>Lights</b> – dual halogen composite with automatic exterior light control and flash to pass feature. Cargo area lighting – fog lights – roof markers – 5– 3500HD DRW	S – S	S 0 <sup>3</sup> S	S S S	S S S
<b>Mirrors</b> – Camper type with manual extend capability – deluxe wide-load, manual extending and folding, heated, integrated turn signals with lower convex spotter, black – manual folding, black – 2500HD models – manual folding, power remote control, heated, black – 2500HD models – power folding, power remote control, heated, integral turn signal indicators, electrochromic auto-dimming driver's side and body-colour – not available on 3500HD with dual rear wheels	0 <sup>4</sup> – S – –	– 0 <sup>4</sup> S – –	– 0 <sup>4</sup> – – S	– – – – S
<b>Mouldings</b> – bodyside, body-colour (except 3500HD Reg. Cab models) – bodyside, body-colour with chrome insert	– –	S –	S –	– S
<b>Rear Vision Camera</b> – reverse assist for parking or trailer towing (includes interior rear-view mirror display) – not available on Reg. Cab models	–	0	0	S
<b>Recovery hooks</b> – two, front	S	S	S	S
<b>Skid plates</b> – off-road, includes shields for engine, transmission, transfer case and front differential, included with Z71 suspension (4x4 only)	0	0	0	S
<b>SL Package</b> – HD: includes fog lights, power door locks, remote keyless entry system, AM/FM stereo with MP3 compatible CD player (also includes auxiliary input jack, seek/scan, digital clock, auto tone control, speed-compensated volume, Radio Data System® (RDS) and TheftLock®) and up-level performance speakers in Extended and Crew Cab models. 2500HD models include 17" chrome-clad wheels with chrome centre caps, 3500HD with SRW include 18" polished aluminum wheels, 3500HD with DRW features 17" steel wheels with chrome appearance centre cap and wheel insert	0	–	–	–
<b>SLE Exterior Package</b> – HD: includes remote vehicle starter system, fog lights, universal home remote and auto-dimming interior rear-view mirror. 2500HD models also include power remote control exterior rear-view mirrors (heated, power folding, auto dimming, with integral turn signal indicators)	–	0	–	–
<b>Sunroof</b> – power, with express-open, includes universal home remote and short overhead console (Ext. and Crew Cab)	–	0 <sup>5</sup>	0	0
<b>Tailgate package</b> – includes lockable EZ lift tailgate	–	0	0	S
<b>Tire</b> – spare tire carrier – locking, rear underbody, winch-mounted	S	S	S	S
<b>Tires</b> – 2500HD – LT245/75R17 all-season** – 2500HD and 3500HD SRW – LT265/70R18 all-season** – 2500HD – LT265/60R20 all-terrain – 2500HD – LT265/70R17 all-terrain – 2500HD and 3500HD SRW – LT265/70R18 all-terrain – 3500HD DRW – LT235/80R-17 highway – 3500HD DRW – LT235/80R17 all-terrain	S 0 <sup>6</sup> 0 0 0 0 0	S 0 <sup>6</sup> 0 0 0 S 0	– S 0 0 0 S 0	– S 0 0 0 S 0
<b>Ultrasonic rear parking assist</b> – rear obstacle detection system with audible warning	–	–	0	S
<b>Wheels</b> – 2500HD – 17" painted steel – 2500HD – 17" chrome-clad steel – 2500HD – 17" aluminum appearance – 2500HD – 20" aluminum – 2500HD and 3500HD SRW – 18" painted steel – 2500HD and 3500HD SRW – 18" polished aluminum – 3500HD DRW – 17" painted steel – 3500HD DRW – 17" painted steel with chrome appearance centre cap and wheel insert – 3500 DRW – 17" polished aluminum – Crew Cab only	S 0 – – 0 <sup>6</sup> – S – –	– S 0 0 <sup>6</sup> – – S 0 <sup>7</sup> –	– – – 0 S – – S –	– – – – S S – –
<b>Windshield wipers</b> – variable delay (intermittent), flat-blade with wet arm washers	S	S	S	S

INTERIOR	WT	SLE	SLT	DENALI
<b>Climate control</b> – single-zone air conditioning, manual – automatic, dual-zone	S –	S 0 <sup>8</sup>	– S	– S
<b>Console</b> – overhead deluxe	S	S	S	S
<b>Cruise control</b>	S	S	S	S
<b>Defogger</b> – electric rear-window	0	0	S	S
<b>Floor covering</b> – colour-keyed carpeting and removable vinyl floor mats (includes rear mats in Ext. and Crew Cab) – vinyl, graphite rubberized coating	0 S	S 0	S –	S –
<b>Floor mats</b> – front and rear removable carpeted floor mats	–	–	–	S
<b>Instrument panel</b> – standard with upper and lower glove compartments – premium with single glove compartment	S –	S –	– S	– S
<b>Instrumentation</b> – analogue gauge cluster with speedometer, tachometer, engine temperature, fuel level, voltmeter and oil pressure – Driver Information Centre (DIC); comprehensive multi-language system with trip odometer, engine hour meter, transmission temperature, GM Oil Life Monitoring System, tire pressure monitoring system (except 3500HD DRW models) and visual and audible reminders/warnings – Compass and exterior temperature display added to above – four DIC menu buttons located on the instrument panel provide additional vehicle information and permit customization features such as automatic locking/unlocking, seat position recall, exit lighting and remote door lock/unlock	S – –	S S S	S S S	S S S
<b>Locks</b> – keyless entry system – power, programmable with lock-out protection (standard on all Crew Cabs)	0 <sup>7</sup> 0 <sup>7</sup>	S S	S S	S S
<b>Mirror</b> – includes auto-dimming feature	–	–	S	S
<b>Safety Package</b> – includes power adjustable pedals and ultrasonic rear parking assist (Extended and Crew Cab models)	–	0	–	–
<b>SLE Interior Package</b> – includes AM/FM stereo with MP3 compatible CD player, Bluetooth® connectivity, steering wheel-mounted audio system controls, power 6-way driver's seat adjuster with 40/20/40 split-bench and dual-zone automatic climate controls on Extended and Crew Cab models	–	0	–	–
<b>SLT Convenience Package</b> – includes universal home remote, power adjustable pedals and ultrasonic rear parking assist	–	–	0	–
<b>Steering column</b> – tilt adjustable	S	S	S	S
<b>Steering wheel</b> – heated, leather-wrapped with woodgrain finish – leather-wrapped – audio system controls	– 0 <sup>9</sup> 0 <sup>9</sup>	– S 0 <sup>8</sup>	– S S	S – S
<b>Sunshades</b> – LH and RH, padded; colour-keyed cloth; LH with pocket, RH with visor mirror – LH and RH, padded; colour-keyed cloth with illuminated visor mirrors	S –	– S	– S	– S
<b>Universal home remote</b> – 3-channel transmitter	–	0	0	S
<b>Window</b> – rear sliding, power operated (Ext. and Crew Cab)	–	0	0 <sup>10</sup>	0 <sup>10</sup>
<b>Windows</b> – front, power with passenger lock-out feature – front, includes driver express-down feature – front, includes driver and passenger express-down feature – rear, power drop glass (Ext. and Crew Cab)	– – – –	S S S S	S – S S	S – S S
<b>SEATS</b> Front 40/20/40 split-bench with driver and front-passenger manual recliners, centre fold-down armrest, vinyl or cloth trim. Includes driver manual lumbar adjuster when cloth trim specified	S	–	–	–
Front 40/20/40 split-bench, driver and front-passenger manual recliners, driver manual lumbar adjuster, centre fold-down armrest with storage, lockable storage compartment in centre seat cushion (includes auxiliary power outlet), seatback storage pockets on Ext. and Crew Cab models. Available in Premium cloth or with leather seat inserts. Rear folding seat includes vinyl trim when ordered with leather seat inserts	–	S	–	–
<b>Seat adjuster</b> – power 6-way driver seat on 40/20/40 split-bench (required with available leather seat inserts)	–	0	–	–
Front bucket seats, includes power 6-way driver and front-passenger seat adjusters, front passenger manual recliner, driver and front passenger manual lumbar adjuster, centre console and seatback storage pockets. Available in Premium cloth or with leather-appointed seating. Rear folding seat includes vinyl trim when ordered with leather inserts	–	0	–	–
Front bucket seats with leather seat inserts, includes power 10-way driver and front-passenger seat adjusters (including power 2-way lumbar adjuster), heated seat cushions and seatbacks, 2-position driver memory, centre floor console and seatback storage pockets. Rear folding seat includes vinyl trim	–	–	S	–
Front bucket seats with heated and cooled seat cushions and seatbacks added to above	–	–	–	S
Rear stadium-style fold-up seat on Crew Cab – 60/40 split-folding	S	S	S	S
Rear stadium-style fold-up seat on Ext. Cab – 60/40 split-folding on SLE and SLT	S	S	S	–

ENTERTAINMENT	WT	SLE	SLT	DENALI
<b>AM/FM stereo with seek/scan and digital clock</b>	S	–	–	–
<b>AM/FM stereo, CD player with MP3 playback capability, auxiliary audio input jack, seek/scan, digital clock, auto tone control, speed-compensated volume, TheftLock® and Radio Data System® (RDS)</b>	0	S	–	–
<b>Includes features of above sound system plus USB port and 36 cross-band presets</b>	–	0	S	–
<b>AM/FM stereo, 6-disc CD changer with MP3 playback capability, auxiliary audio input jack, seek/scan, digital clock, auto tone control, speed-compensated volume, TheftLock®, Radio Data System® (RDS), USB port, Bose® Premium sound system with subwoofer and 36 cross-band presets</b>	–	0	0	S
<b>AM/FM stereo, CD/DVD player upper slot/CD player lower slot, both with MP3 playback capability, auxiliary audio input jack, seek/scan, digital clock, auto tone control, speed-compensated volume, TheftLock®, Radio Data System® (RDS), USB port and Bose® Premium sound system with subwoofer. Includes Rear Seat Entertainment Package with single DVD player, overhead display, remote control, 2 sets of wireless headphones and auxiliary audio/video input jacks</b>	–	–	0 <sup>11</sup>	0 <sup>11</sup>
<b>AM/FM stereo with Navigation, CD player with MP3/WMA playback capability, auxiliary audio input jack, seek/scan, digital clock, auto tone control, speed-compensated volume, TheftLock®, Radio Data System® (RDS), USB port and Bose® Premium sound system with subwoofer. Includes 178 mm (7-inch) touch screen interface display, enhanced DVD based navigation system, voice-based commands, points-of-interest, 80 GB hard drive with 50 GB for media file downloading, time shifting up to 20 minutes and Rear Vision Camera System with display in navigation screen – Extended and Crew Cab models<sup>11</sup></b>	–	–	0 <sup>11</sup>	0 <sup>11</sup>
<b>Rear Seat Entertainment Package can be added to above sound system. Includes single DVD player, overhead display, remote control, 2 sets of wireless headphones and auxiliary audio/video input jacks. Available on Crew Cabs only</b>	–	–	0 <sup>11</sup>	0 <sup>11</sup>
<b>SiriusXM Satellite Radio™†</b>	0	0	S	S
<b>Bluetooth®</b> – hands-free phone connectivity	0 <sup>9</sup>	0 <sup>8</sup>	S	S
<b>Bluetooth® Convenience Package</b> – includes Bluetooth® connectivity and leather-wrapped steering wheel with audio system controls	0	0	–	–
<b>4-speaker sound system (Reg. Cab models)</b>	S	S	–	–
<b>6-speaker up-level performance sound system (Ext. and Crew Cab models)</b>	S	S	–	–
<b>Bose® Premium sound system with subwoofer (Ext. and Crew Cab models)</b>	–	0	S	S

## DIMENSIONS



MODEL	A. Wheelbase mm (in.)	B. Overall Length mm (in.)
Regular Cab long box	3396 (133.7)	5715 (225.0)
Extended Cab standard box	3663 (144.2)	5857 (230.6)
Extended Cab long box	4018 (158.2)	6337 (249.5)
Crew Cab standard box	3904 (153.7)	6101 (240.2)
Crew Cab long box	4260 (167.7)	6581 (259.1)
	C. Width mm (in.)	D. Height mm (in.)
Single Rear Wheels	2032 (80.0) (max.) <sup>†</sup>	1989 (78.3) (max.) <sup>††</sup>
Dual Rear Wheels	2436 (95.9) (max.) <sup>†</sup>	1979 (77.9) (max.) <sup>††</sup>

S – Standard.  
 0 – Optional individually or in combination with other optional equipment.  
 1 – Included with Single Rear Wheel (SRW) models only.  
 2 – Available with Single Rear Wheels only. Requires automatic locking rear differential.  
 3 – Included with available SLE Exterior Package.  
 4 – Standard on 3500HD DRW models.  
 5 – Requires available SLE Exterior Package.  
 6 – Standard on 3500HD SRW Crew Cab std. box.  
 7 – Included with available SL Package.  
 8 – Included with available SLE Interior Package.  
 9 – Requires Bluetooth Convenience Package.  
 † Excludes mirrors.  
 †† Depending on model selected.  
 \* Visit onstar.ca for coverage map, details and systems limitations. Services vary by model and conditions.  
 \*\* All-season tires may not satisfy winter tire requirements in all regions of the country. Tires specifically designed for severe winter conditions and marked with the "winter tire" symbol may be required during certain months or in certain regions. Contact your Provincial, Municipal or local road authority for information regarding which tires are required in your particular area.  
 ‡ Available in 10 Canadian provinces and the 48 contiguous United States. Monthly subscription sold separately after trial period. Visit xmradio.ca for details.  
 †† At time of printing, detailed map coverage is available for most major urban areas of the United States and for certain metropolitan areas of Canada (Vancouver, Calgary, Edmonton, Winnipeg, Windsor, London, Toronto, Ottawa, Montreal, Quebec City and Halifax). Coverage is limited outside these areas.

## PEACE OF MIND, STANDARD WITH EVERY GMC MODEL

When you build them with quality, you can back them with confidence. That's why General Motors of Canada backs every GMC model with the best coverage in Canada. Program highlights include:

- 3-year/60,000 km New Vehicle Limited Warranty\*
- 5-year/160,000 km Powertrain Component Limited Warranty, with \$0 deductible on repairs and the warranty is fully transferable at no charge\*
- 5-year/160,000 km Courtesy Transportation\*
- 5-year/160,000 km 24/7 Roadside Assistance\*\*
- 6-year/160,000 km rust-through perforation coverage\*
- 8-year/130,000 km coverage on catalytic converters and powertrain control modules (PCMs)\*

\*Whichever comes first. Conditions and limitations apply, see dealer for details.

### OTHER OWNERSHIP PRIVILEGES AND PROGRAMS:\*\*

- **GM Protection Plan (GMPP)** – the only extended service plan backed by the resources and commitment of General Motors. GMPP may be purchased at the time of sale or subsequently during the New Vehicle Limited Warranty period.
- **GM Goodwrench Service** – with GM-certified technicians and GM-approved parts, nobody knows your GM vehicle better.
- **GMC Owner Centre** – As an owner, take advantage of the GMC Owner Centre. This online owner's destination gives you access to coupons, contests, current offers and the latest driving and maintenance tips. Find out more at [GMCowner.ca](http://GMCowner.ca)

\*\*Conditions and limitations apply

### TO HELP YOU PURCHASE OR LEASE A NEW VEHICLE:

- **Purchase Financing and Leasing** – on-the-spot financing, see dealer for full details<sup>1</sup>.
- **GM Student Bonus Program** – students or recent graduates of high school, college or university\*\* may be entitled to receive a Student Bonus vehicle redemption allowance of \$500 or \$750<sup>1</sup> (tax inclusive) (purchased vehicle dependant) to use towards the purchase, lease or finance of one eligible new GMC vehicle.
- **The GM Card** – GM cardholders may redeem up to \$3500 GM Card<sup>®</sup> Earnings (subject to Vehicle Redemption Allowances) toward the Total Purchase Price on eligible new GM vehicles.<sup>1</sup> For full program details please visit [thegmcard.ca](http://thegmcard.ca)

<sup>1</sup> Subject to eligibility. <sup>2</sup> Program subject to change. \*\*Conditions and limitations apply.

### INFORMATION RESOURCES:

You can find more information about these programs from your GM dealer, or at these information centres:

- The GM website at [gm.ca](http://gm.ca)
- The GM Customer Care Centre at 1-800-GM-DRIVE (1-800-463-7483 or 1-800-263-3830 for TDD users).

### A WORD ABOUT THIS BROCHURE

Some of the equipment shown or described throughout this brochure may be available at extra cost. We have tried to make this brochure comprehensive and factual. We reserve the right, however, to make changes at any time, without notice, in prices, colours, materials, equipment, specifications, models and availability. Specifications, dimensions, measurements, ratings and other numbers in this brochure and other printed materials provided at the dealership or affixed to vehicles are approximates based upon design and engineering drawings and prototypes and laboratory tests. Your vehicle may differ due to variations in manufacture and equipment. Since some information may have been adapted since the time of the printing, please check with your GM dealer for complete details. General Motors of Canada Limited reserves the right to lengthen or shorten the model year for any product, for any reason, or to start and end model years at different times.

### A WORD ABOUT ASSEMBLY

GM vehicles are equipped with engines and components produced and assembled by different operating units of General Motors, its subsidiaries and suppliers and these engines and components may change or be obtained from different sources from time to time. All such engines and components are approved for use in GM vehicles. Certain equipment ordered may be unavailable at the time of assembly and we suggest that you verify that your vehicle includes the equipment you ordered, or if there are changes, that they are acceptable to you.

### TRADEMARKS

The marks appearing in this brochure including, but not limited to: General Motors, GM, the GM Accessories logo, GMC, Denali, Sierra and their respective logos, emblems, slogans and vehicle model names and body designs; and other marks such as Z71, Allison, Duramax, StabiliTrak and Vortec are trademarks of General Motors and/or General Motors of Canada Limited, its subsidiaries, affiliates or licensors.

OnStar and the OnStar emblem are registered trademarks and OnStar RemoteLink is a trademark of OnStar, LLC. TheftLock is a registered trademark of Delphi Technologies, Inc.

Radio Data System (RDS) is a registered trademark of the U.S. National Association of Broadcasters.

The SiriusXM name and related logos are trademarks of SiriusXM Canada, Canadian Satellite Radio Inc.

Eaton is a registered trademark of Eaton Corporation.

Bose is a registered trademark of the Bose Corporation.

Bluetooth is a registered trademark of Bluetooth SIG Inc.

Apple, iPhone and iPod are trademarks of Apple Computer Inc. registered in the U.S. and other countries.

Android mobile technology is a trademark of Google Inc.

### COPYRIGHT

©Copyright 2011 General Motors of Canada Limited. All Rights Reserved. All text, images, graphics, and other materials in this brochure are subject to the copyright and other intellectual property rights of General Motors and/or General Motors of Canada Limited. These materials may not be reproduced, distributed or modified without the express written permission of General Motors and/or General Motors of Canada Limited.

Printed in Canada, October 2011.

## SIERRA HD WHEELS

### 2500 HD



17" painted steel

17" chrome-clad steel

17" bright machined aluminum

### 2500 HD & 3500HD SRW



18" painted steel

18" polished aluminum

20" 5 spoke aluminum

### 3500 HD DRW



17" painted steel

17" painted steel with chrome appearance centre cap and wheel insert

17" polished aluminum

## SIERRA HD ACCESSORIES: THE FINAL TOUCH

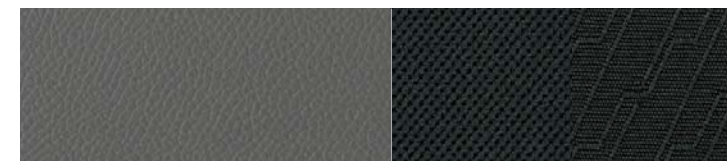


With quality GMC Accessories, it's easy to take your new Sierra's style, comfort and capability to new heights. To ensure outstanding fit, finish and performance, all GMC Accessories are engineered to the same high standards as your Sierra. That's why they can be covered under the 3-year/60,000 km New Vehicle Limited Warranty.\* When you purchase or lease your new Sierra through GMAC, your GMC Accessories can also be included in your finance agreement. Ask your dealer for a complete listing of the GMC Accessories to help you make your Sierra unmistakably yours. Or visit [gmc.gm.ca](http://gmc.gm.ca)

\* Whichever comes first, when permanently installed by the dealer at the time you purchased your new vehicle, or for the remainder of the New Vehicle Limited Warranty if installed after the time of your vehicle purchase, but no less than 12 months.

## INTERIOR FABRICS

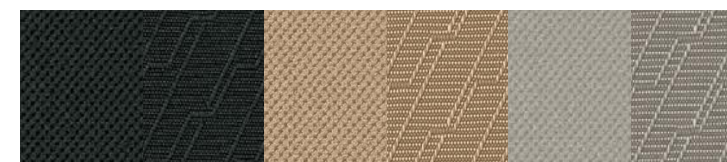
VINYL/BASIC CLOTH – standard on Sierra WT models



88 – Dark Titanium Vinyl

88 – Dark Titanium Cloth

PREMIUM CLOTH – standard on Sierra SLE models

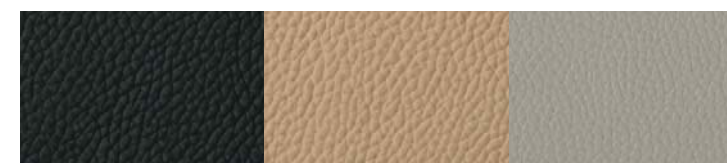


19 – Ebony Premium Cloth

33 – Light Cashmere Premium Cloth

83 – Light Titanium Premium Cloth

LEATHER SEATING – standard on Sierra SLT models and optional on Sierra SLE models

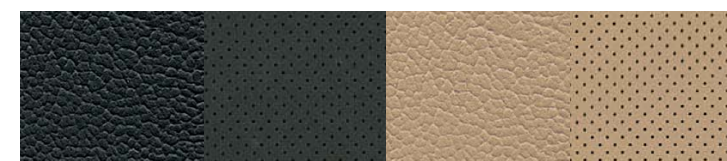


19 – Ebony Leather

33 – Light Cashmere Leather

83 – Light Titanium Leather

PERFORATED LEATHER SEATING – standard on Denali models



19 – Ebony Leather

39 – Light Cashmere Leather

## EXTERIOR COLOURS



16 – Steel Grey Metallic\*



37 – Midnight Blue Metallic\*



41 – Onyx Black



46 – Stealth Grey Metallic



50 – Summit White



58 – Carbon Black Metallic\*



74 – Fire Red\*



GAN – Quicksilver Metallic\*



GHA – Mocha Steel Metallic\*

## EXTERIOR/INTERIOR COLOUR COMPATIBILITY

	INTERIOR ►	19 – Ebony	33 – Light Cashmere with Dark Cashmere Accents SLE/SLT	39 – Light Cashmere with Cocoa Accents Denali	83 – Light Titanium with Dark Titanium Accents SLE/SLT	88 – Dark Titanium
EXTERIOR ▼	MODEL ►	SLE/SLT/DENALI				WT
16 – Steel Grey Metallic*		•	•		•	•
37 – Midnight Blue Metallic*		•	•		•	•
41 – Onyx Black		•	•	•	•	•
46 – Stealth Grey Metallic		•	•	•	•	•
50 – Summit White		•	•	•	•	•
58 – Carbon Black Metallic*		•	•		•	•
74 – Fire Red*		•	•		•	•
GAN – Quicksilver Metallic*		•	•		•	•
GHA – Mocha Steel Metallic*		•	•		•	•

\* Not available on Denali model. Due to the limitations of the printing process, the colours shown may differ slightly from the actual colour. For more accurate colour samples, ask your sales consultant to see the dealer showroom colour display. Exterior colours may be subject to changes during the 2012 model year, please check with your sales consultant or visit [gmc.gm.ca](http://gmc.gm.ca) for latest colour availability on Sierra HD.



**GMC**  
**TRUCK**  
OWNER NETWORK  
GMCton.ca

[gmc.gm.ca](http://gmc.gm.ca)



191-12-B-010E