

2012 GMC YUKON

WE ARE PROFESSIONAL GRADE



2012 GMC YUKON AND YUKON XL

CANADA'S FINEST FULL-SIZE SUV, HANDS DOWN.

If you're looking for the space, capability and four-season performance that only a full-size SUV can provide, there's a GMC Yukon or Yukon XL in your future. The 2012 Yukons simply outperform the competition in so many ways. They offer best-in-class standard horsepower and best-in-class available horsepower and torque.* Remarkably, they also deliver the best fuel efficiency in the class, city and highway, 2WD and 4x4.** And if you demand an even higher level of efficiency, Yukon offers the only hybrid powertrain technology available in any full-size SUV. Yukon also wins when it comes to real-world performance, with best-in-class available towing capacity, best-in-class available cargo capacity and best-in-class available seating capacity.* Factor in high-value class-exclusive features like OnStar® and a standard oil life monitoring system, plus the best coverage in Canada, and there's only one conclusion: Yukon is the number one choice in a full-size SUV, hands down.

*Based on WardsAuto.com 2011 Large SUV segment and latest 2011 Model Year competitive information for comparably equipped vehicles available at time of printing. Excludes other GM models.

**2012 Yukon fuel consumption ratings based on GM testing in accordance with approved Transport Canada test methods. Competitive fuel consumption ratings based on Natural Resources Canada's 2011 Fuel Consumption Guide for WardsAuto.com 2011 Large SUV segment. Your actual fuel consumption may vary.



YUKON HYBRID DENALI, shown in White Diamond Tricoat, available at extra cost.

YUKON: NO WORRIES.

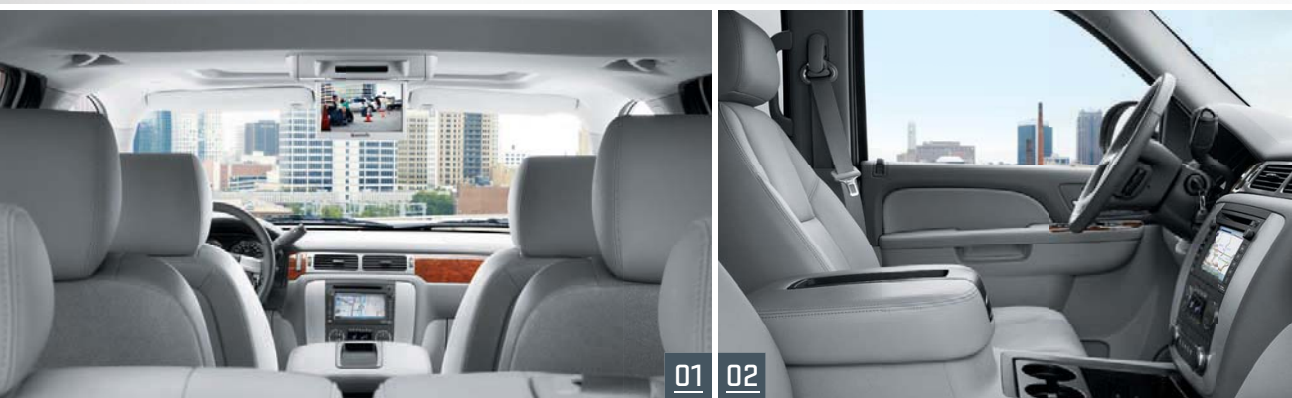
The confidence you feel at the wheel of a 2012 Yukon is well founded. For quick, easy passing and merging manoeuvres, the standard 5.3L Vortec™ V8 puts out a very healthy 320 horsepower – more than the Ford Expedition or Nissan Armada.* It also makes the most out of every drop of fuel, consuming just 9.5 litres of regular gas per 100 kilometres of highway driving.** (For the record, Expedition and Armada both use about 20 percent more.†) Inside, Yukon is

designed to handle almost anything. The spacious cabin seats up to eight – nine with Yukon SLE's standard 40/20/40 divided front bench seat. Or you can configure the interior to carry up to 3084 litres (108.9 cu. ft.) of gear. Yukon also offers everything you need for stress-free trailer towing, including a standard heavy-duty Trailing Equipment Package and an available integrated trailer brake controller. Yukon is rated to tow up to a very substantial 3856 kg (8500 lb.).

* Based on latest 2011 competitive information available at time of printing.

** Yukon fuel consumption rating based on GM testing in accordance with approved Transport Canada test methods. Your actual fuel consumption may vary.

† Competitive fuel consumption ratings based on Natural Resources Canada's 2011 Fuel Consumption Guide.



01 Yukon SLT features heated leather-appointed 6-way power front bucket seats with lumbar adjustment, a 3-passenger 60/40 divided 2nd-row bench seat and a 3-passenger 50/50 divided 3rd-row bench. The 2nd-row captain's chairs shown here are available.

02 Convenient storage is part of every Yukon. SLT and Denali models feature a centre floor console with dual cupholders front and rear and a large storage bin, plus dual auxiliary power outlets and controls for the rear-seat audio and climate control systems.



YUKON SLT, shown in Quicksilver Metallic with available equipment.



YUKON XL: WHEN WE SAY XL, WE MEAN IT.

Yukon XL takes Yukon's extraordinary strengths to an even higher level. With an overall length more than half a metre greater than Yukon and a wheelbase that's longer by more than 350 mm, Yukon XL is Canada's largest production SUV.* It's the most

spacious,* too, with outstanding second- and third-row legroom and a tremendous 3891 litres of cargo room behind the front seats. Yukon XL is also the only full-size SUV in Canada available in a three-quarter ton configuration for heavy-duty use.*

With its unique frame, suspension, steering and braking systems and a 352-horsepower 6.0-litre Vortec™ V8 engineered for extreme operating conditions, Yukon XL 2500 is capable of towing trailers weighing up to 4355 kg (9600 lb.) – the most of any SUV.*

* Based on WardsAuto.com 2011 Large SUV segment and latest 2011 Model Year competitive data for comparably equipped vehicles available at time of printing. Excludes other GM models.

01 For optimal versatility, Yukon and Yukon XL's 2nd- and 3rd-row seats fold away and the 3rd-row seat is removable. Power release fold-and-tumble 2nd-row seats are standard on Denali models and available on SLT models.

02 The available rear vision camera is invaluable when you have to reverse into tight parking spaces. It also makes it an easy matter to hook up a trailer.



YUKON XL 1500 SLT, shown in Quicksilver Metallic.

DENALI: OUR HIGHEST ACHIEVEMENT.

Named for North America's tallest mountain, Yukon Denali represents the pinnacle of SUV engineering and design. The engine is a 403-horsepower 6.2-litre Vortec™ V8 with fuel saving variable valve timing (VVT) technology. Full-time all-wheel drive is standard, for added confidence, and the ride is smooth and controlled, thanks to a standard AutoRide™ suspension that constantly adjusts shock absorber damping

01 Denali models feature a unique heated steering wheel with wood and leather trim and auxiliary controls for a variety of vehicle systems. The instrument panel is trimmed in soft touch materials for a premium appearance and feel.

to match the road conditions. On the inside, Denali models are all about luxury, with heated and cooled power front bucket seats, a heated steering wheel and a Bose® surround sound audio system all standard. And with that distinctive front grille and glittering 20-inch chromed aluminum wheels, Yukon Denali models stand head and shoulders above ordinary SUVs in exterior styling.

02 The Yukon Denali driver's seat is power adjustable 12 ways, features an internal heating and cooling system and can be programmed to store the preferred positions of 2 drivers. It's easily adjusted with fingertip controls.

DENALI FEATURES

- 403-hp Vortec™ 6.2L V8 with Variable Valve Timing (VVT)
- Trailering Heavy-Duty Cooling Package
- Full-time all-wheel drive
- AutoRide™ suspension
- 20" chromed aluminum wheels
- Denali-exclusive chrome honeycomb grille
- Premium heated power exterior mirrors with power folding feature, integrated turn signals and driver-side auto-dimming feature and ground illumination
- Colour-keyed assist steps with chrome inserts
- Luggage rack side rails with bright insert, body-coloured end caps and black cross bars
- Power liftgate
- Power sunroof
- Rear vision camera
- Side blind zone alert.

DENALI INTERIOR FEATURES

- Heated and cooled perforated leather-appointed full-featured front bucket seats
- Heated leather-appointed 2nd-row bucket seats with power release fold-and-tumble feature
- Heated leather-wrapped steering wheel with wood trim
- Auto-dimming interior rear-view mirror with reading lights
- AM/FM stereo with Navigation, CD player and 7" touch screen interface display
- 10-speaker Bose® Centre Channel audio system.



YUKON HYBRID DENALI, shown in Onyx Black.

HYBRID EFFICIENCY. YUKON CAPABILITY.

Imagine, if you will, a full-size, eight-passenger SUV capable of towing up to 2812 kg (6200 lb.). Now imagine that vehicle uses just 10.1 litres of gas per hundred kilometres of city driving – less than a V6-powered midsize sedan such as a Ford Fusion or a Toyota Camry.* Impossible? Not for the engineers at GMC. Thanks to them, Yukon Hybrid SLT and Yukon Hybrid Denali are motivated by a unique dual-mode hybrid power system that includes a 300-volt nickel-metal hydride Energy Storage System, an advanced Electronically Variable Transmission (EVT) and a regenerative braking system. It's cutting-edge technology that makes the very most of every drop of fuel and brings a whole new level of efficiency to Yukon's legendary capability.

* 2012 Yukon Hybrid fuel consumption ratings based on GM testing in accordance with approved Transport Canada test methods. Competitive fuel consumption ratings based on Natural Resources Canada's 2011 Fuel Consumption Guide. Your actual fuel consumption may vary.



HYBRID DENALI FEATURES

- 332-hp Vortec™ 6.0L LIVC V8 with Active Fuel Management® (AFM)
- 4-speed electronic variable automatic transmission
- Regenerating Brake System
- 2-speed Autotrac™ 4x4 transfer case
- Magnetic Ride Control® suspension package
- 22" aluminum wheels
- Denali-exclusive chrome mesh grille
- Premium heated power exterior mirrors with power folding feature, integrated turn signals, driver-side auto-dimming feature and ground illumination
- Colour-keyed assist steps with chrome inserts
- Luggage rack side rails and cross bars, black
- Power liftgate
- Power sunroof.

HYBRID DENALI INTERIOR FEATURES

- Heated and cooled perforated leather-appointed full-featured front bucket seats
- 60/40 leather-appointed split-folding bench 2nd-row seat
- DVD-based Navigation System with Hybrid power flow display
- Rear vision camera
- 120-volt, 3-prong, power outlet
- Leather-wrapped steering wheel with wood trim
- Auto-dimming interior rear-view mirror
- 10-speaker Bose® Centre Channel audio system.

PROTECTION ABOVE ALL.

GMC's obsession with your safety, and that of your passengers, is obvious in every detail of the 2012 Yukons. The tall seating position, large tinted windows and large rear-view mirrors provide an excellent view of the surrounding road conditions, and the well-placed controls help keep you firmly in control. Advanced technologies like StabiliTrak® electronic stability control help you stay out of harm's way. And should a crash prove unavoidable, you'll be protected by front and rear crush zones, a steel safety cage and Yukon's six standard airbags. Yukon can even summon help after a collision has taken place, via the automatic crash response offered by OnStar®.



For millions of people across North America, OnStar® is making driving safer, more convenient and more enjoyable. It's a revolution in driving, and it's standard on every Yukon, along with 6 months of the Directions & Connections Plan with Turn-by-Turn Navigation* and OnStar RemoteLink™. Check out some of the remarkable services OnStar® can perform for you.

STOLEN VEHICLE ASSISTANCE

OnStar® can help recover your Yukon if it's stolen. OnStar® can use GPS technology to locate your Yukon and track its movements. That information is relayed to authorities who can use it to recover your Yukon quickly and safely.



HANDS-FREE CALLING

In more and more jurisdictions, hands-free calling is the law. OnStar®'s built-in wireless calling feature makes it easy to make mobile calls legally. It also provides a convenient and reliable connection, even in areas where cellular reception is limited.



ONSTAR REMOTELINK™

RemoteLink™ places the power of OnStar® right in the palm of your hand. Whether you're across the street or across the country, RemoteLink™ gives you unparalleled control and unprecedented connectivity to perform a series of functions remotely from your iPhone® or select Android™ devices.



REMOTE VEHICLE DIAGNOSTICS

To help you keep your new Yukon in peak condition, OnStar® can automatically run hundreds of diagnostic and maintenance checks every month. You receive a finished report promptly via email.



AUTOMATIC CRASH RESPONSE

The moment built-in OnStar® sensors detect a collision, they automatically alert an OnStar® Advisor of critical details, such as the type and severity of the crash – and your exact location. The Advisor relays the information immediately to emergency responders, directing them to your location and preparing them for what to expect at the scene.*



TURN-BY-TURN NAVIGATION

OnStar®'s Turn-by-Turn Navigation is the most user-friendly navigation system available. You simply tell an OnStar® Advisor where you want to go. Clear, audible directions to your destination are then downloaded to your Yukon. Turn-by-Turn Navigation will even help get you back on track automatically if you take a wrong turn.



EMERGENCY SERVICES

Press the red Emergency button, and you'll get a priority connection to a specially trained Advisor who will contact the appropriate emergency provider and guide them right to your location.*



Download and register the app at onstar.ca and you'll have access to the following functions right at your fingertips:

- Lock or unlock your doors from any distance
- Start your engine remotely (if equipped)
- Activate your horn and lights to find your vehicle
- View real-time fuel information (range to empty, fuel remaining, current fuel consumption and lifetime fuel consumption)
- Check your remaining oil life and tire pressure
- Access your OnStar® account information
- Contact an OnStar® Advisor, Roadside Assistance or your preferred GMC dealer.

* Visit onstar.ca for coverage map, details and system limitations. Services vary by model. OnStar® acts as a link to existing emergency service providers.



“CAN’T” ISN’T IN YUKON’S VOCABULARY.

Whatever you need to carry, a 2012 Yukon can handle it. Yukon and Yukon XL both feature large, easily reconfigurable interiors, so you can accommodate almost any combination of passengers and cargo. The standard 50/50 divided third-row seat folds flat and can be tumbled forward, or removed completely, to increase cargo space, and the second-row bench seat is a split-folding 60/40 design. Inside Yukon,

there’s room for up to 3084 litres of gear behind the front seats, while Yukon XL can carry a best-in-class 3891 litres.* Both interiors also pass the ultimate test: carrying 4' x 8' sheets of building material. And if the cargo you need to handle is heavy as well as bulky, there’s a Yukon for that, too. Yukon XL 2500 is rated to haul payloads weighing up to 1111 kg (2450 lb.) – more than double what Toyota Sequoia can carry.**

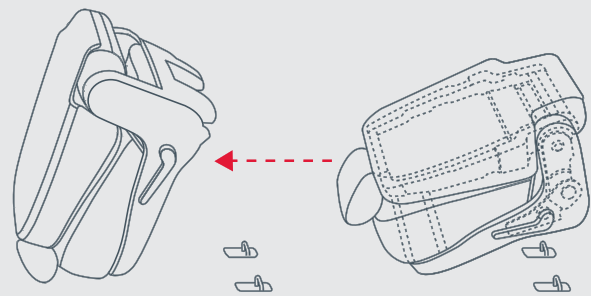
*Based on WardsAuto.com 2011 Large SUV segment and latest 2011 Model Year competitive information available at time of printing. Excludes other GM models.

**Based on latest 2011 Model Year competitive information available at time of printing.

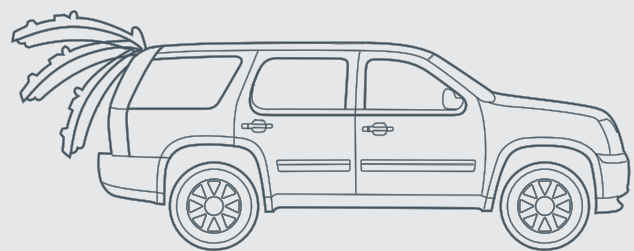
01 Yukon’s standard 2nd-row bench seat and available 2nd-row captain’s chairs can be equipped with an available power fold-and-tumble feature. Each seat automatically unlatches, folds and tumbles out of the way for easy access to the third row.

02 The available power liftgate opens and closes with a touch of your key fob for easier access to your Yukon’s impressive cargo capacity. Switches are also located on the liftgate itself and in the overhead centre console.

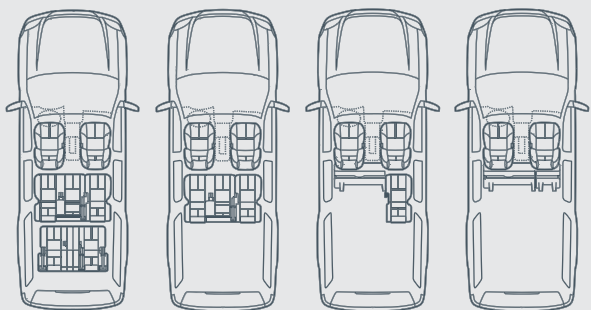
03 Yukon and Yukon XL’s standard and available 2nd- and 3rd-row seats are all designed for maximum versatility, so it’s easy to carry passengers and long or bulky cargo items at the same time.



01



02



03

CONNECTIONS COUNT.

Choose Yukon and you’ll have leading-edge information and entertainment technologies at your fingertips. Every model features Bluetooth® hands-free phone connectivity. SiriusXM® Satellite Radio is also standard across the board, so you can enjoy 130 channels of digital-quality music, news, sports and more wherever your travels take you. Every standard and available audio system includes a USB port, so you can enjoy the tunes on your iPod® or other MP3 player while you’re on the road. Available features include a DVD-based navigation system to help you find your way and a rear DVD entertainment system that will keep the family happy on long trips.

04 Every Yukon and Yukon XL model includes convenient steering wheel-mounted switches for the audio and cruise control systems, so you can make common adjustments without taking your hands off the wheel.

05 Denali and Hybrid models feature a standard DVD-based navigation system with a 178 mm (7 in.) touch screen, voice recognition and an 80 GB hard drive. On Denali models, a superb 10-speaker Bose® surround sound audio system is also included.



04



05

BIG TRAILER? BIG DEAL.

Thanks to GMC's engineering excellence, Yukon and Yukon XL have what it takes to handle large, heavy trailers with ease. Every model comes with a standard heavy-duty Trailing Equipment Package, including a weight-distributing hitch platform, a 51-mm (2 in.) hitch receiver, a seven-pin sealed wiring connector and provisions to add on an aftermarket trailer brake controller. An electric trailer brake controller and a Trailing Heavy-Duty Cooling Package are standard on Yukon XL 2500 and available on other models.



YUKON MODEL SELECTOR

MODEL	Wheelbase mm (in.)	Drive	Cargo Volume L (cu. ft.) ¹	Base GVWR kg (lb.) ²	Max. Payload kg (lb.) ³	Max. Gross Trailer Weight kg (lb.) ⁴
Yukon	2946 (116.0)	2WD	3084 (108.9)	3221 (7100)	749 (1652)	3856 (8500)
	2946 (116.0)	4x4	3084 (108.9)	3311 (7300)	786 (1733)	3720 (8200)
Yukon Hybrid	2946 (116.0)	2WD	3084 (108.9)	3221 (7100)	681 (1502)	2812 (6200)
	2946 (116.0)	4x4	3084 (108.9)	3311 (7300)	627 (1383)	2676 (5900)
Yukon Denali	2946 (116.0)	AWD	3084 (108.9)	3311 (7300)	731 (1612)	3674 (8100)
Yukon Hybrid Denali	2946 (116.0)	4x4	3084 (108.9)	3402 (7500)	631 (1391)	2585 (5700)
Yukon XL 1500	3302 (130.0)	2WD	3891 (137.4)	3266 (7200)	694 (1528)	3674 (8100)
	3302 (130.0)	4x4	3891 (137.4)	3357 (7400)	715 (1576)	3629 (8000)
Yukon XL Denali	3302 (130.0)	AWD	3891 (137.4)	3357 (7400)	663 (1462)	3538 (7800)
Yukon XL 2500	3302 (130.0)	2WD	3891 (137.4)	3901 (8600)	1111 (2450)	4355 (9600)
	3302 (130.0)	4x4	3891 (137.4)	3901 (8600)	989 (2181)	4264 (9400)

¹ Maximum with rear seats folded down or removed.

² Gross Vehicle Weight Rating (GVWR) includes vehicle, passengers, equipment and cargo.

³ Payloads are approximate and will change with the addition of optional or aftermarket equipment. Consult your dealer or equipment supplier for details.

⁴ Trailer Weight (also called Trailer Towing Capacity) is the weight of a trailer, its load or contents plus any other weight added to the tow vehicle. Many trailer towing applications require optional equipment. Refer to the GMC online Trailing Guide for details.

YUKON MODEL OVERVIEW

Yukon and Yukon XL are available in a range of attractive models. To help you determine which one best suits your needs, the major features of each model are listed below.

YUKON & YUKON XL SLE

The following features are standard on SLE models:

- 320 hp Vortec™ 5.3L V8 engine with Active Fuel Management® and Variable Valve Timing (VVT) on Yukon and Yukon XL 1500 models
- 352 hp Vortec™ 6.0L V8 with Variable Valve Timing (VVT) on Yukon XL 2500
- GM Oil Life Monitoring System
- 6-speed automatic transmission with Driver Shift Control, Tow/Haul mode and Grade Braking
- 4-wheel vented disc brakes with 4-wheel ABS and Dynamic Rear Proportioning (DRP)
- StabiliTrak® electronic stability control system with Proactive Roll Avoidance
- Traction control
- Autotrac™ single-speed electronic transfer case (4x4 models) – 2-speed on Yukon XL 2500

- Locking rear differential
- 17" aluminum wheels
- Tire pressure monitoring system
- Heated, power exterior mirrors
- Roof rack side rails
- Heavy-duty Trailing Equipment
- Remote vehicle starter system
- Remote keyless entry system
- Driver Information Centre (DIC)
- Six airbags
- Seating for up to nine
- Power 6-way driver's seat adjuster
- Tri-zone manual climate controls and rear auxiliary heater
- Power windows and door locks
- AM/FM stereo with CD player, MP3 playback, USB port, auxiliary input jack and 6 speakers
- SiriusXM Satellite Radio™**
- Bluetooth® connectivity
- OnStar®** and 6 months of the Directions & Connections Plan with Turn-by-Turn Navigation.

YUKON & YUKON XL SLT

SLT models include the equipment of SLE models plus the following features and upgrades:

- Halogen fog lights
- Black roof rack cross bars
- Ultrasonic rear park assist
- Seating for up to eight
- Leather-appointed heated front bucket seats
- Power 6-way front-passenger seat adjuster
- Centre-floor console with storage and cupholders
- Automatic tri-zone climate controls
- Power adjustable brake and accelerator pedals
- Bose® premium 9-speaker sound system with subwoofer
- Rear-seat audio controls and two headphone jacks
- Universal home remote transmitter.

YUKON DENALI & YUKON XL DENALI

Denali models include the equipment of SLT models plus the following features and upgrades:

- 403 hp Vortec™ 6.2L V8 engine with VVT
- Full-time all-wheel drive
- AutoRide™ suspension with automatic rear level control
- 20" aluminum wheels
- Trailing Heavy-Duty Cooling Package
- Denali-specific grille
- Power sunroof
- Power liftgate
- Colour-keyed assist steps with chrome inserts
- Heated, power exterior mirrors, body-colour with driver side auto-dimming, turn signal in glass and ground illumination, power folding
- Side blind zone alert
- Chrome roof rack side rails with body-coloured end caps
- Heated, leather-wrapped steering wheel with wood trim
- Auto-dimming interior rear-view mirror

- Seating for up to seven
- Premium insulation acoustics package
- Heated and cooled power 12-way front bucket seats with perforated-leather appointments
- Driver's 2-position seat memory function
- Heated, leather-appointed reclining second-row bucket seats and vinyl 50/50 divided third-row bench seat
- Power release fold-and-tumble 2nd-row seating
- DVD navigation system with 178 mm (7 in.) touch screen, voice recognition, 80 GB hard drive and Bose® 10-speaker surround sound audio system
- Rear vision camera.

YUKON HYBRID SLT

Yukon Hybrid SLT includes many of the Yukon SLT features, plus:

- 322 hp Vortec™ 6.0L V8 LIVC (Late Intake Valve Closing) engine with VVT and Active Fuel Management®
- GM Hybrid Propulsion Electric System
- 300-volt nickel-metal hydride Energy Storage System (ESS) located under the second-row seat cushion
- 4-speed electronically variable automatic transmission
- Regenerative braking system
- Autotrac™ 2-speed electronic transfer case (4x4 models)
- Unique hybrid aero design grille and fascias
- 18" low-mass aluminum wheels
- Low mass aluminum liftgate
- Tire inflator kit in place or spare tire and wheel assembly
- Seating for eight
- Heated, leather-appointed front bucket seats
- 120-volt household-style power outlet
- DVD navigation system with 178 mm (7 in.) touch screen, voice recognition and 80 GB hard drive.

YUKON HYBRID DENALI

Yukon Hybrid Denali includes the equipment of Yukon Hybrid SLT plus the following features and upgrades:

- Denali-specific grille
- Halogen fog lights
- 22" aluminum wheels
- Power liftgate
- Power sunroof
- Colour-keyed assist steps with chrome inserts
- Chrome roof rack side rails with body-coloured end caps and centre cross bars
- Leather-wrapped steering wheel with wood trim
- Heated and cooled power 12-way front bucket seats with perforated-leather appointments and driver's 2-position memory function
- Leather-appointed 60/40 divided second-row bench seat and vinyl 50/50 divided third-row bench seat
- DVD navigation system with 178 mm (7 in.) touch screen, voice recognition, 80 GB hard drive and Bose® 10-speaker surround sound audio system.

* Available in 10 Canadian provinces and the 48 contiguous United States. Subscription sold separately after trial period. Visit xmradio.ca for details.

** Visit onstar.ca for coverage map, details and system limitations. Services vary by model and conditions.

GMC YUKON & YUKON XL STANDARD & OPTIONAL FEATURES

SAFETY AND SECURITY	SLE	SLT	DENALI	HYBRID SLT	HYBRID DENALI
Airbags – driver and front-passenger, dual-stage frontal with passenger detecting system and passenger-side air bag suppression system with status indicator in overhead console – except Yukon XL 2500 – single-stage, driver and front-passenger, frontal – Yukon XL 2500 – driver and right front passenger, seat-mounted side-impact – front-to-rear, outboard seating positions head curtain side-impact with rollover sensor	S	S	S	S	S
Door locks – child-security, rear doors	S	S	S	S	S
OnStar® – In-Vehicle Communications and Assistance Service, includes 6 months of the Directions & Connections Plan with Turn-by-Turn Navigation* and OnStar RemoteLink™	S	S	S	S	S
Safety restraints – LATCH (Lower Anchors and top Tethers for Children) – 3-point belts for all seating positions (when equipped with front bucket seats; lap belt for centre position with front split-bench seat)	S	S	S	S	S
StabiliTrak® – electronic stability control system with proactive roll avoidance, electronic trailer sway control and hill hold assist	S	S	S	S	S
Security system – content theft alarm – electronic immobilizer	S	S	S	S	S
Traction control – electronic, full-function, all-speed	S	S	S	S	S

MECHANICAL	SLE	SLT	DENALI	HYBRID SLT	HYBRID DENALI
Air cleaner – high capacity	S	S	–	–	–
Brakes – power, 4-wheel vented disc with electronic pedal override – 4-wheel anti-lock braking system (ABS) and dynamic rear proportioning (DRP) – regenerative braking system, recharges 300-volt Hybrid battery pack	S	S	S	S	S
Engine – Vortec™ 5.3L V8 with Active Fuel Management® and Variable Valve Timing, capable of running on up to 85% ethanol (E85) – except Yukon XL 2500 – Horsepower – 320 @ 5400 rpm; – Torque – 335 lb.-ft. @ 4000 rpm – Vortec™ 6.2L V8 with Variable Valve Timing (VVT), capable of running on up to 85% ethanol (E85) – Horsepower – 403 @ 5700 rpm; – Torque – 417 lb.-ft. @ 4300 rpm – Vortec™ 6.0L V8 with Variable Valve Timing (VVT), – Horsepower – 352 @ 5400 rpm; – Torque – 382 lb.-ft. @ 4200 rpm – Yukon XL 2500 – Vortec™ 6.0L LIVC V8 with Variable Valve Timing (VVT) and Active Fuel Management®, Hybrid electric propulsion system with 300-volt Hybrid battery pack and high voltage management module – Horsepower – 332 @ 5100 rpm; – Torque – 367 lb.-ft. @ 4100 rpm – block heater	S	S	–	–	–
Locking differential – rear	S	S	S	S	S
Steering – power, rack-and-pinion – Yukon and Yukon XL 1500 – electric power, rack-and-pinion – power, recirculating ball – Yukon XL 2500	S	S	S	–	–
Suspension – Premium smooth ride – Yukon and Yukon XL 1500 – AutoRide™, road-sensing, electronically controlled shock absorbers with air-assisted automatic rear level control – Magnetic Ride Control® – heavy-duty handling and trailering with front independent torsion bars and rear multi-stage leaf springs – Yukon XL 2500	S	S	–	S	–
Trailer Equipment – heavy-duty, includes weight-distributing hitch platform with 51 mm (2 in.) hitch receiver, 7-pin sealed wiring connector and provision for an aftermarket trailer brake controller	S	S	S	S	S
Trailer Heavy-Duty Cooling Package – includes external transmission and engine oil coolers (standard on Yukon XL 2500 models) and 2-Speed Autotrac™ transfer case on 4x4 models	0	0	S	–	–
Trailer electric brake controller – standard on Yukon XL 2500	0	0	0	–	–
Transfer case – single-speed, Autotrac™ with electronic rotary control – Yukon 4x4 and Yukon XL 1500 4x4 models ³ – 2-speed, Autotrac™ with electronic rotary control – Yukon Hybrid, Yukon Hybrid Denali and Yukon XL 2500 4x4 models – AWD, full-time electronic automatic system	S	S	–	–	–

MECHANICAL (CONTINUED)	SLE	SLT	DENALI	HYBRID SLT	HYBRID DENALI
Transmission – 6-speed electronically controlled automatic with two overdrive gears, Tow/Haul mode and Driver Shift Control (model 6L80 used on 1500 models; heavy-duty model 6L90 used on Yukon XL 2500) – 4-speed automatic integrated with Hybrid variable electric propulsion system	S	S	S	–	–
Transmission/Hybrid electronics cooler	–	–	–	S	S
Snowplow Prep Package – Yukon XL 2500 4x4 models only	0	0	–	–	–
Vehicle starter system – remote	S	S	S	S	S
Z71 Off-Road Equipment – includes P265/70R17 On-Off Road tires and skid plates protecting the oil pan, front differential case and 2-speed Autotrac™ transfer case (4x4 1500 models only, not available on Yukon XL 2500)	–	0	–	–	–

EXTERIOR	SLE	SLT	DENALI	HYBRID SLT	HYBRID DENALI
Assist steps – black – black with chrome insert – power retractable	S	S	–	S	–
Bumpers – front and rear, colour-keyed fascia – front and rear, colour-keyed fascia with unique Hybrid aero design	S	S	S	–	S
Door handles – colour-keyed – chrome	S	S	–	S	–
Glass – Solar-Ray tinted, deep-tinted on all windows behind front doors	S	S	S	S	S
Grille – chrome surround – Denali specific chrome mesh insert	S	S	S	S	S
Liftgate – includes liftglass – power, electric open and close with keyless remote control – low mass aluminum with fixed window glass	S	S	S	–	S
Lighting – dual halogen with Daytime Running Lights and automatic light control – fog lights, halogen	S	S	S	S	S
Mirrors – manual folding power adjustable, heated and colour-keyed – power folding, full-feature power adjustable, heated, driver-side auto-dimming feature, side-entry illumination and integrated turn signals, colour-keyed – deluxe wide load, manual extending and folding, heated, integrated turn signals and lower convex spotter (Yukon XL 2500)	S	S	–	–	–
Mouldings – bodyside, colour-keyed – bodyside, colour-keyed with chrome insert	S	S	–	S	–
Rear vision camera – reverse assist for parking or trailer towing (includes interior rear-view mirror with display or displayed on navigation system screen with up-level sound system and DVD-based navigation)	–	0	S	S	S
Recovery hooks – two, front – 4x4 models ⁴	S	S	S	–	S
Roof rack – side rails, black (bright insert with body-coloured end caps on Denali) – cross bars	S	S	S	–	S
Side blind zone alert	–	–	S	–	S
Skid plates – includes aluminum front underbody shield from front fascia to first cross member, plus oil pan, front differential and transfer case shields (included with Z71 Off-Road Equipment) – 4x4 models	0	0	–	–	–
Sunroof – power, sliding and tilt glass panel with express-open and close	–	0	S	0	S
Tire inflator kit	–	–	–	S	S
Tires – P265/70R17 all-season** – Yukon and Yukon XL 1500 – P265/65R18 all-season** – P285/45R22 all-season** – P275/55R20 all-season** – Yukon and Yukon XL 1500 – P265/70R17 On-Off road – Yukon and Yukon XL 1500 4x4 models – LT265/70R17 All-Terrain – Yukon XL 2500	S	S	–	–	–
Ultrasonic rear parking assist – rear obstacle detection system with audible warning	0 ⁵	S	S	S	S

EXTERIOR (CONTINUED)	SLE	SLT	DENALI	HYBRID SLT	HYBRID DENALI
Wheels – 17" x 7.5" aluminum, sport (N88) – Yukon and Yukon XL 1500 – 18" x 8.0" low mass aluminum (P71) – 22" x 9.0" aluminum (RVA) – 17" x 7.5" bright machined aluminum with 8-lug design and centre cap – Yukon XL 2500 (P25) – full-size 17" spare under rear frame, lockable	S	S	–	–	–
Wheel and Tire Package – includes 20" x 8.5" polished aluminum wheels and P275/55R20 all-season** tires – Yukon and Yukon XL 1500 (RDP) – includes 20" x 8.5" chrome-clad aluminum wheels and P275/55R20 all-season** tires – Yukon and Yukon XL 1500 (S86)/Yukon Denali and Yukon XL Denali (P41)	–	0	–	–	–
Windshield wiper/washer – variable delay (intermittent), flat-blade, with wet-arm washers – rear-window with fixed delay	S	S	S	S	S
Driver Convenience Package (PDE) – includes ultrasonic rear parking assist and power adjustable pedals	0	S	S	S	S
White Diamond Package – polished exhaust tip and chrome recovery hooks – Yukon and Yukon XL 1500	–	0 ⁶	–	–	–

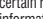
INTERIOR	SLE	SLT	DENALI	HYBRID SLT	HYBRID DENALI
Acoustics Package – premium insulation	–	–	S	–	S
Cargo compartment mat – rear (Yukon XL)	0	0	S	0	0
Climate Control – tri-zone, manual air conditioning controls with individual settings for driver, front and rear passengers ⁷ – tri-zone, automatic air conditioning controls with individual settings for driver, front and rear passengers ⁷	S	–	–	–	–
Console – centre floor, includes storage bin, dual cupholders in front and rear, 2 power outlets, rear-seat audio and HVAC controls	–	S	S	S	S
Cruise control	S	S	S	S	S
Defogger – electric, rear-window	S	S	S	S	S
Floor covering – colour-keyed carpet with 1st- and 2nd-row removable floor mats	S	S	S	S	S
Heater – rear, auxiliary with rear passenger heating and cooling ducts	S	S	S	S	S
Instrumentation – full analogue gauge cluster, includes speedometer, tachometer, odometer, trip odometer, fuel level, voltmeter (replaced with ECO gauge in Hybrid), coolant temperature and oil pressure) – Driver Information Centre, comprehensive multi-language system that displays numerous vehicle functions with both visual and audible reminders/warnings. Enables programmable personalization of features such as automatic locking/unlocking and exit lighting, includes 8-point compass and exterior temperature display – tire pressure monitoring system (except spare) – GM Oil Life Monitoring System	S	S	S	S	S
Lights – overhead, reading and cargo with illuminated entry feature and theatre dimming	S	S	S	S	S
Locks – power, programmable with lock-out protection – remote keyless entry system, includes 2 extended range transmitters and panic button	S	S	S	S	S
Mirror – rear-view, auto-dimming with integrated dual reading lights	–	0 ⁸	S	S	S
Pedals – power adjustable brake and accelerator	0 ⁵	S	S	S	S
Power outlets – auxiliary 12-volt (2 on instrument panel, 1 in cargo area and 1 in seat storage compartment with front 40/20/40 bench seat and 2 in centre console when equipped with bucket seats) – auxiliary 120-volt 3-prong household type, located in rear	S	S	S	S	S
Steering column – tilt adjustable	S	S	S	S	S
Steering wheel – leather-wrapped with audio system and cruise controls – heated – includes wood trim	S	S	S	S	S
Sunshades – LH and RH, padded, colour-keyed, extendable with illuminated visor mirrors	S	S	S	S	S
Universal home remote – 3-channel transmitter	–	S	S	S	S
Windows – power, includes driver express-down and passenger lock-out features	S	S	S	S	S

SEATS	SLE	SLT	DENALI	HYBRID SLT	HYBRID DENALI
Premium cloth 40/20/40 3-passenger split-bench reclining front seat with power 6-way driver seat adjuster and manual lumbar adjuster, centre fold-down armrest with storage and lockable storage compartment in centre seat cushion	S	–	–	–	–
Leather-appointed heated reclining front bucket seats with power 6-way driver and front-passenger seat adjusters with manual lumbar adjusters and centre floor console	–	S	–	S	–
Premium cloth reclining front bucket seats with power 6-way driver and front-passenger seat adjusters with manual lumbar adjusters and centre floor console	–	0	–	–	–
Leather-appointed full-feature power reclining front bucket seats with driver and front-passenger power 10-way seat adjusters (including power 2-way lumbar adjusters), heated, driver's 2-position memory controls and centre floor console	–	0	–	–	–
Perforated leather-appointed full-feature power reclining front bucket seats with driver and front-passenger power 12-way seat adjusters (including power 4-way lumbar adjusters), heated and cooled seats, driver's 2-position memory controls and centre floor console	–	–	S	–	S
2nd-row 3-passenger 60/40 split-folding bench with centre armrest	S	S	0	S	S
2nd-row reclining bucket seats	–	0 ⁹	S	–	–
2nd-row heated (outboard seating positions)	–	0 ⁹	S	–	S
2nd-row power release fold-and-tumble	–	0	S	–	–
3rd-row 3-passenger 50/50 split-bench, removable ¹⁰	S	S	S	S	S

ENTERTAINMENT	SLE	SLT	DENALI	HYBRID SLT	HYBRID DENALI
AM/FM stereo with CD player, MP3 playback compatible, seek-and-scan, auto-tone control, speed-compensated volume, TheftLock®, Radio Data System® (RDS) and digital clock. Also includes an auxiliary input jack, USB/iPod®/MP3 input jack and audio connectivity and a 6-speaker system.	S	–	–	–	–
AM/FM stereo as above, plus rear seat audio control with dual headphone jacks, a power outlet and controls for volume, station selection and media.	–	S	–	–	–
AM/FM/XM stereo with navigation, CD player, MP3/WMA playback capability, 7" touch-screen interface display, DVD based Nav. System, voice-based commands, 80 GB hard drive with 50 GB for media file downloading, USB/iPod® port and time shifting up to 20 minutes. Also includes rear seat audio controls with dual headphone jacks. [†]	–	0 ¹¹	S	S	S
Rear Seat Entertainment Package includes single display with remote control and two wireless headphones can be added to above.	–	0	0	–	–
Bose® Premium, 9-speaker audio system with subwoofer in centre console	–	S	–	S	–
Bose® Premium, 10-speaker system with surround sound	–	–	S	–	S
AM/FM stereo with CD/DVD player, MP3 playback capability, seek-and-scan, auto-tone control, speed-compensated volume, TheftLock®, Radio Data System® (RDS) and digital clock. Also includes an auxiliary input jack, USB port, iPod®/MP3 input jack and 2 CD slots. Rear entertainment system includes DVD player with remote control, overhead display, 2 sets of wireless headphones, audio/video input jacks and rear seat radio controls.	–	0	–	–	–
SiriusXM Satellite Radio™††	S	S	S	S	S
Bluetooth® – hands-free phone connectivity	S	S	S	S	S

PREFERRED EQUIPMENT GROUPS	SLE	SLT	DENALI	HYBRID SLT	HYBRID DENALI
Yukon and Yukon XL offer a popular upgrade to the SLT for even more convenience and comfort.					
Yukon and Yukon XL PEG 1SD adds the following equipment to the SLT: Full-feature leather – appointed, heated front bucket seats with power 10-way seat adjusters (including power 2-way lumbar adjusters), power release fold and tumble 2nd-row seating with 2 heat settings for outboard positions, heated, leather-wrapped steering wheel, auto-dimming interior rear-view mirror and full-feature power folding, heated exterior rear-view mirror with integrated turn signal, ground illuminator and driver side auto dimming.	–	0	–	–	–

S – Standard. 0 – Optional individually or in combination with other optional equipment.
 Note: The trim features indicated reflect only a portion of the total content of each trim level. See your sales consultant for complete listings, current availability and compatibility.
 1 – Not available on Yukon XL 2500 models.
 2 – Trailing Heavy-Duty Cooling Package required.
 3 – 2-speed Autotrac transfer case is available.
 4 – Standard on all 2500 models.
 5 – Included with available Driver Convenience Package.
 6 – Requires White Diamond Tricoat (98), available at extra cost.
 7 – Rear-seat climate controls are included, located in the overhead console on SLE models and rear of the centre floor console on SLT and Denali models.
 8 – Included with available rear vision camera.
 9 – Requires leather-appointed full-feature front bucket seats.

10 – Third row is vinyl when leather-appointed seating is specified.
 11 – Includes rear vision camera with display on navigation screen.
 * Visit onstar.ca for coverage map, details and system limitations. Services vary by model and conditions.
 ** All-season tires may not satisfy winter tire requirements in all regions of the country. Tires specifically designed for severe winter conditions and marked with the "winter tire" symbol  may be required during certain months or in certain regions. Contact your Provincial, Municipal or local road authority for information regarding which tires are required in your particular area.
 † At time of printing, detailed map coverage is available for most major urban areas of the United States and for certain metropolitan areas of Canada (Vancouver, Calgary, Edmonton, Winnipeg, Windsor, London, Toronto, Ottawa, Montreal, Quebec City and Halifax). Coverage is limited outside these areas.
 †† Available in all 10 Canadian provinces and the 48 contiguous United States. Subscription sold separately after trial period. Visit xmradio.ca for more details.

PEACE OF MIND, STANDARD WITH EVERY GMC MODEL

- When you build them with quality, you can back them with confidence. That's why General Motors of Canada backs every GMC model with the best coverage in Canada. Program highlights include:
- 3-year/60,000 km New Vehicle Limited Warranty*
 - 5-year/160,000 km Powertrain Component Limited Warranty, with \$0 deductible on repairs and the warranty is fully transferable at no charge*
 - 5-year/160,000 km Courtesy Transportation*
 - 5-year/160,000 km 24/7 Roadside Assistance*
 - 6-year/160,000 km rust-through perforation coverage*
 - 8-year/130,000 km coverage on catalytic converters and powertrain control modules (PCMs)*
- *Whichever comes first. Conditions and limitations apply, see dealer for details.

OTHER OWNERSHIP PRIVILEGES AND PROGRAMS:**

- **GM Protection Plan (GMPP)** – the only extended service plan backed by the resources and commitment of General Motors. GMPP may be purchased at the time of sale or subsequently during the New Vehicle Limited Warranty period.
- **GM Goodwrench Service** – with GM-certified technicians and GM-approved parts, nobody knows your GM vehicle better.
- **GMC Owner Centre** – As an owner, take advantage of the GMC Owner Centre. This online owner's destination gives you access to coupons, contests, current offers and the latest driving and maintenance tips. Find out more at GMCowner.ca

**Conditions and limitations apply.

TO HELP YOU PURCHASE OR LEASE A NEW VEHICLE:

- **Purchase Financing and Leasing** – on-the-spot financing, see dealer for full details¹.
- **GM Student Bonus Program** – students or recent graduates of high school, college or university** may be entitled to receive a Student Bonus vehicle redemption allowance of \$500 or \$750¹ (tax inclusive) (purchased vehicle dependant) to use towards the purchase, lease or finance of one eligible new GMC vehicle.
- **The GM Card** – GM cardholders may redeem up to \$3500 GM Card[®] Earnings (subject to Vehicle Redemption Allowances) toward the Total Purchase Price on eligible new GM vehicles.^{1,2} For full program details please visit thegmcard.ca

¹ Subject to eligibility. ² Program subject to change. **Conditions and limitations apply.

INFORMATION RESOURCES:

You can find more information about these programs from your GM dealer, or at these information centres:

- The GM website at gm.ca
- The GM Customer Care Centre at 1-800-GM-DRIVE (1-800-463-7483 or 1-800-263-3830 for TDD users).

A WORD ABOUT THIS BROCHURE

Some of the equipment shown or described throughout this brochure may be available at extra cost. We have tried to make this brochure comprehensive and factual. We reserve the right, however, to make changes at any time, without notice, in prices, colours, materials, equipment, specifications, models and availability. Specifications, dimensions, measurements, ratings and other numbers in this brochure and other printed materials provided at the dealership or affixed to vehicles are approximates based upon design and engineering drawings and prototypes and laboratory tests. Your vehicle may differ due to variations in manufacture and equipment. Since some information may have been adapted since the time of the printing, please check with your GM dealer for complete details. General Motors of Canada Limited reserves the right to lengthen or shorten the model year for any product, for any reason, or to start and end model years at different times.

A WORD ABOUT ASSEMBLY

GM vehicles are equipped with engines and components produced and assembled by different operating units of General Motors, its subsidiaries and suppliers and these engines and components may change or be obtained from different sources from time to time. All such engines and components are approved for use in GM vehicles. Certain equipment ordered may be unavailable at the time of assembly and we suggest that you verify that your vehicle includes the equipment you ordered, or if there are changes, that they are acceptable to you.

TRADEMARKS

The marks appearing in this brochure including, but not limited to: General Motors, GM, GMC, Denali, Yukon, Yukon XL, Z71 and their respective logos, emblems, slogans and vehicle model names and body designs; and other marks such as Active Fuel Management, Autotrac, AutoRide, StabiliTrak and Vortec are trademarks of General Motors and/or General Motors of Canada Limited, its subsidiaries, affiliates or licensors.

OnStar and the OnStar emblem are registered trademarks and OnStar Remotelink is a trademark of OnStar, LLC. TheftLock is a registered trademark of Delphi Technologies, Inc.

Radio Data System (RDS) is a registered trademark of the U.S. National Association of Broadcasters.

The SiriusXM name and related logos are trademarks of SiriusXM Canada, Canadian Satellite Radio Inc.

Eaton is a registered trademark of Eaton Corporation.

Bose is a registered trademark of the Bose Corporation.

Bluetooth is a registered trademark of Bluetooth SIG Inc.

Apple, iPhone and iPod are trademarks of Apple Computer Inc. registered in the U.S. and other countries.

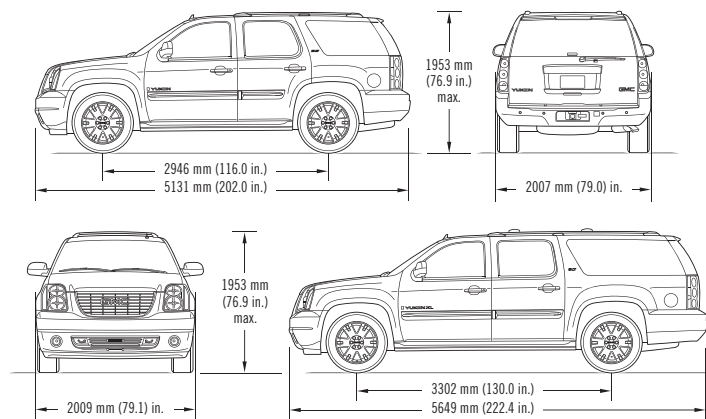
YouTube and the Android mobile technology platform are trademarks of Google Inc.

COPYRIGHT

©Copyright 2011 General Motors of Canada Limited. All Rights Reserved. All text, images, graphics, and other materials in this brochure are subject to the copyright and other intellectual property rights of General Motors and/or General Motors of Canada Limited. These materials may not be reproduced, distributed or modified without the express written permission of General Motors and/or General Motors of Canada Limited.

Printed in Canada, October 2011.

DIMENSIONS



CARGO AREA DIMENSIONS, mm (in.)	YUKON	YUKON XL
Cargo floor height to ground	805 (31.7)	828 (32.6)
Maximum cargo height	1059 (41.7)	1052 (41.4)
Cargo floor width between wheel housings	1247 (49.1)	1247 (49.1)
Load-floor length to front seat	2068 (81.4)	2586 (101.8)
Load-floor length to 2nd-row seat	1255 (49.4)	1768 (69.6)
Load-floor length to 3rd-row seat	386 (15.2)	904 (35.6)

VOLUME, L (cu. ft.)	YUKON	YUKON XL
With all seats in position	479 (16.9)	1297 (45.8)
With 3rd-row seat removed or folded	1708 (60.3)	2549 (90)
With 2nd-row seat folded and 3rd-row seat removed	3084 (108.9)	3891 (137.4)

WHEELS

YUKON



17" x 7.5" sport aluminum, standard on 1500 SLE and SLT models (N88)



17" x 7.5" bright machined aluminum, standard on all 2500 models (P25)



20" x 8.5" chrome-clad aluminum, available on 1600 SLT models (S86)



20" x 8.5" polished aluminum, available on 1600 SLT models (RDP)



18" x 8.0" low mass aluminum, standard on Hybrid SLT models (P71)

YUKON DENALI



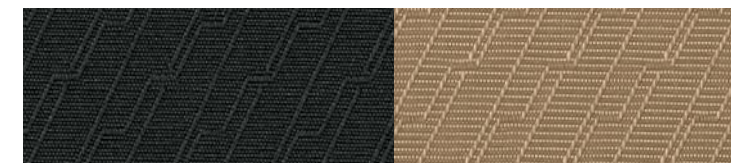
20" x 8.5" chromed aluminum, standard on Denali models (P41)



22" x 9.0" chromed aluminum, standard on Hybrid Denali models (RVA)

INTERIOR FABRICS

YUKON/YUKON XL – PREMIUM CLOTH – standard on SLE models



19 – Ebony

33 – Light Tan

YUKON/YUKON XL – LEATHER-APPOINTED SEATING – standard on SLT models



19 – Ebony

33 – Light Tan

83 – Light Titanium

YUKON/YUKON XL DENALI – PERFORATED LEATHER-APPOINTED SEATING



19 – Ebony

39 – Cocoa/Light Cashmere

EXTERIOR COLOURS



16 – Steel Grey Metallic



41 – Onyx Black



50 – Summit White



51 – Gold Mist Metallic¹



58 – Carbon Black Metallic*



89 – Crystal Red Tintcoat*



98 – White Diamond Tricoat*^{1,2}



GAN – Quicksilver Metallic



GHA – Mocha Steel Metallic

EXTERIOR/INTERIOR COLOUR COMPATIBILITY

	INTERIOR MODEL ►	19 – Ebony SLE/SLT DENALI	33 – Light Tan SLE/SLT	83 – Light Titanium SLT	39 – Light Cashmere DENALI
EXTERIOR ▼					
16 – Steel Grey Metallic		•	•	•	•
41 – Onyx Black		•	•	•	•
50 – Summit White		•	•	•	•
51 – Gold Mist Metallic ¹		•	•	•	•
58 – Carbon Black Metallic*		•	•	•	•
89 – Crystal Red Tintcoat*		•	•	•	•
98 – White Diamond Tricoat* ^{1,2}		•	•	•	•
GAN – Quicksilver Metallic		•	•	•	•
GHA – Mocha Steel Metallic		•	•	•	•

* Premium colour, available at extra cost.

¹ Not available on Yukon Hybrid SLT.

² Requires available White Diamond Package and SLT with PEG 1SD. Not available with SLE or Yukon XL 2500.

Due to the limitations of the printing process, the colours shown may differ slightly from the actual colour. For more accurate colour samples, ask your sales consultant to see the dealer showroom colour display. Exterior colours may be subject to changes during the 2012 model year, please check with your sales consultant or visit gmc.gm.ca for latest colour availability on Yukon.



gmc.gm.ca



191-12-B-007E