



The Power to Surprise

2018
CADENZA



CADENZA

MADE FOR
[EXCEEDING EXPECTATIONS]



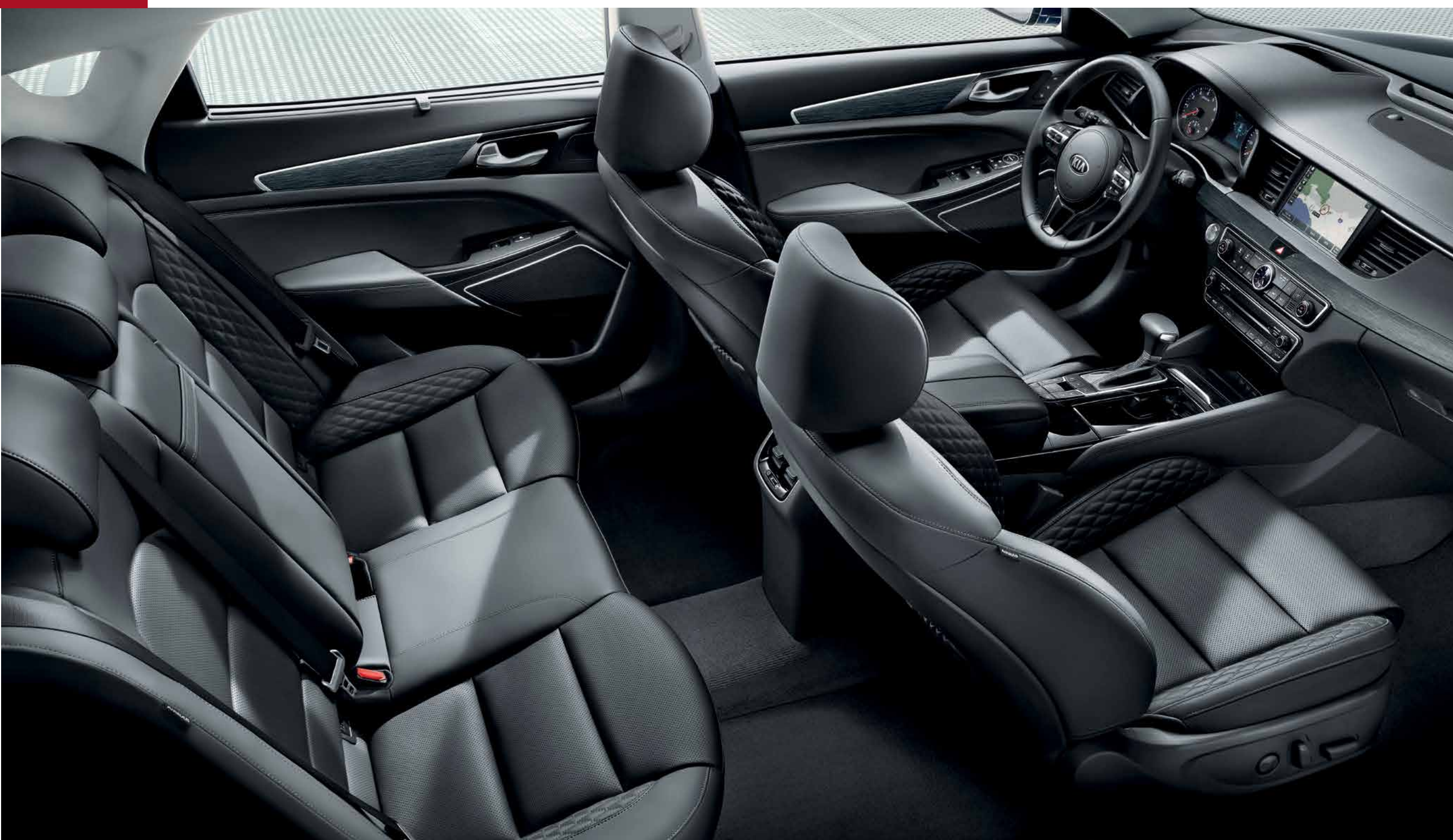
It's the moment the light goes on. The moment everything you've learned comes together and takes you to the next level, whether it's in sports, business, the arts – or the way you drive. It's that sense of satisfaction when everything not only comes out right, but actually exceeds expectations. One glance at the 2018 Kia Cadenza represents that kind of moment, for you and for Kia. For you, it takes driving from the realm of the ordinary to the extraordinary – from transportation to personal expression. For Kia, it's leading the development of sophisticated performance, technology, and design. The next chapter in your story and Kia's.



A STRAIGHT LINE BETWEEN DESIGN AND PERFORMANCE.

The striking design of the 2018 Cadenza is the product of a philosophy articulated by Kia's Chief Design Officer, Peter Schreyer. It's based on "the simplicity of the straight line." You can see it on prominent display in a defining contour that runs the length of Cadenza, giving it a commanding presence. Its charismatic image is literally projected through its Z-design dual-function LED headlights, "ice-cubed" LED fog lights and Z-design LED rear taillights. Details such as the concave grille and available dark satin chrome alloy 19-inch wheels accent the design. And with Cadenza, the promise of the styling is realized by advanced performance technology, beginning with a 3.3 litre Gasoline Direct Injection (GDI) V6 engine that generates 290 horsepower that is mated with an eight-speed Sportmatic® transmission with an Eco/Comfort/Sport/Smart Drive Mode Select. Built on an exceptionally rigid, yet lightweight body structure, with shock absorbers that automatically adjust damping to match the conditions and an electronic steering control unit that together make handling more responsive and precise. Admire it. Drive it. Love it.





ACHIEVE INNER BALANCE.

Enter a sanctuary that's sure to shift your state of mind. With a level of quietness that's achieved through a stiffer chassis that reduces both noise and vibration. Open the door to a spaciousness that's complimented by the luxurious comfort of leather-appointed seating and interior trim. Premium amenities further enhance the quality of your driving experience, beginning with the convenience of Smart Key and push-button start and the warm welcome offered by a heated steering wheel. It's everything that a thoughtful and well-balanced form of driving was meant to be.

1. HEATED AND AIR-COOLED SEATS

Standard heated front seats are the perfect antidote for Canadian winters. In addition, air-cooled front seats and heated rear seats are included in Cadenza Premium and Limited models.

2. POWER REAR-WINDOW SUNSHADE

Rear-seat passengers can enjoy a cooler and more comfortable ride thanks to an available power rear-window sunshade. Available integrated rear door sunshades give passengers even greater control over the light level in the rear of the car.

3. POWER SEAT-CUSHION EXTENSION

An available power-adjustable driver's seat-cushion extension is a welcome luxury, providing extra support and allowing drivers to further customize their comfort. An available memory system easily recalls up to two drivers' positioning preferences for the driver's seat, outside mirrors and power-adjustable steering column.

4. PANORAMIC SUNROOF

The available panoramic sunroof lets the sunshine and fresh air into the cabin. It includes a power retractable sunshade for enhanced convenience.



IT'S ALL WITHIN YOUR CONTROL.

Control is an integral part of Cadenza's unique approach to luxury performance. You'll appreciate how it applies to all aspects of your driving experience. Inside the cockpit, your focus remains squarely on the road ahead. Meanwhile, a series of systems give you command over everything from advanced media integration with Apple CarPlay^{3,8} and Android Auto^{TM 3,9} to a number of available camera and radar-based inputs and technologies that keep you out of harm's way. You can even keep track of vital info like vehicle speed without taking your eyes off the road, thanks to the available advanced heads-up display system that projects data onto the windshield. A higher level of control – for a higher level of luxury.

HARMAN KARDON^{®6} AUDIO SYSTEM
A premium Harman Kardon[®] surround-sound audio system delivers crystal clear and balanced concert-hall quality sound. This available system features 12 precisely positioned speakers, including a subwoofer, centre channel speaker and external amplifier.



- 1. 360° CAMERA MONITORING SYSTEM¹**
The available 360° camera monitoring system¹ uses four cameras to provide a real-time overhead view of your Cadenza, to make it easier to manoeuvre in and out of parking spaces.
- 2. MEDIA AND MUSIC INTEGRATION**
Cadenza offers an available 8-inch multimedia interface with navigation.² It not only directs you to your next destination but also, provides hands-free connectivity for your Bluetooth^{®4}-enabled smartphone and supports digital music streaming from your devices through Apple CarPlay^{3,8} or through Android Auto^{® 3,9}.

- 3. WIRELESS CHARGING³**
Cadenza helps keep your smartphone fully juiced with available built-in wireless charging. Smart and seamless.
- 4. ELECTRIC PARKING BRAKE**
The available Electronic parking brake functions like a conventional handbrake. Its convenient Auto Hold feature automatically applies and holds the brakes while stopped at a light.



AN ADVANCED COURSE IN SAFETY.

Automotive safety technology has advanced at an unprecedented rate. And Kia has earned a place at the forefront of change with systems that are sure to enhance your peace of mind while driving. Even Cadenza's nine airbags incorporate innovative engineering, thanks to the inclusion of a driver's knee airbag. Leading-edge safety technologies offer their own form of protection by helping you avoid potential collisions, with available systems that include smart blind spot detection¹, rear cross traffic alert¹ and autonomous emergency braking.¹ When it comes to safety, anticipation is everything. That's especially true with the added defence of Cadenza's safety systems. Leading the way to safer driving.

1. ADVANCED HIGH STRENGTH STEEL

Safety in the Cadenza begins at its foundation with a body structure that features the strategic use of Advanced High Strength Steel (AHSS) for even greater occupant protection.

2. REAR CROSS TRAFFIC ALERT¹

When backing out of a parking space, available rear cross traffic alert detects and alerts you to traffic approaching from the left or right.

3. ADVANCED SMART CRUISE CONTROL¹

The available ASCC uses a radar sensor at the front of the vehicle to monitor the distance between your Cadenza and the vehicle ahead. To maintain a predetermined safe distance, it will apply the brakes, and even stop the car, until the vehicle ahead proceeds.

4. LANE DEPARTURE WARNING SYSTEM¹

This available system uses a camera mounted at the top of the windshield to monitor lane markings, and alerts you if the vehicle deviates from the lane when the turn signal has not been activated.

5. SMART BLIND SPOT DETECTION¹

A camera mounted at the top of the windshield detects the departure of your Cadenza from its lane, while scanning the side and rear for vehicles approaching your blind spots. Visual alerts are provided on the outside mirrors and instrument cluster; an audio alert is sounded when necessary. Unlike with earlier systems, when a vehicle approaches the blind spot while the Cadenza is veering into the approaching car's lane, the available smart blind spot detection system actively intervenes to help keep your vehicle in its lane and avoid a potential collision.

¹International model shown.

FEATURES

EXTERIOR	Cadenza	Cadenza Premium	Cadenza Limited
18" machined-finish alloy wheels	•	•	–
19" dark satin chrome alloy wheels	–	–	•
P245/45R18 tires	•	•	–
P245/40R19 tires	–	–	•
Panoramic sunroof	–	•	•
LED headlights (auto-levelling)	•	•	•
Smart high beam assist	–	–	•
LED daytime running lights (bar type)	•	•	•
LED light bar tail lights	•	•	•
LED fog lights	•	•	•
Heated sideview mirrors	•	•	•
Power folding sideview mirrors	–	•	•
LED sideview mirror signal repeaters	•	•	•
Body coloured sideview mirrors	•	•	•
Windshield wiper de-icer	•	•	•
Rain sensing wipers	–	•	•
Solar glass	•	•	•
Sound reducing front windshield	–	•	•
Sound reducing front side door glass	–	•	•
Chrome door handles	•	•	•
Integrated dual exhaust	•	•	•
Splash guards	•	•	•

SAFETY

Dual advanced front airbags	•	•	•
Dual front side-mounted impact airbags	•	•	•
Dual rear seat-mounted side airbags	•	•	•
Dual side curtain airbags	•	•	•
Driver's side knee airbag	•	•	•
4-wheel anti-lock braking system (ABS)	•	•	•
Hill-assist control (HAC)	•	•	•
Electronic stability control (ESC)	•	•	•
Vehicle stability management (VSM)	•	•	•
Blind spot detection ¹	–	•	–
Smart blind spot detection ¹	–	–	•
Rear cross traffic alert ¹	–	•	•
Rear parking sensors ¹	–	•	•
360° camera monitoring system ¹	–	–	•
Autonomous emergency braking system ¹	–	–	•
Lane departure warning system ¹	–	–	•

COMFORT & CONVENIENCE

Air conditioning	•	•	•
Dual-zone automatic climate control	•	•	•
Automatic defog system	•	•	•
Bluetooth® hands-free cell phone connectivity ^{3,4}	•	•	•
AM/FM/MP3/satellite radio ⁵	•	•	•
7" Display Audio	•	–	–
8" multimedia interface with navigation ²	–	•	•
Android Auto™ and Apple CarPlay® smartphone integration ^{3,8,9}	•	•	•

COMFORT & CONVENIENCE (cont.)	Cadenza	Cadenza Premium	Cadenza Limited
8 speakers	•	–	–
Harman Kardon® premium 12-speaker audio system ⁶	–	•	•
7-inch Supervision LCD/TFT instrument cluster	–	•	•
Low washer fluid lamp	•	•	•
Tire pressure monitoring system (TPMS)	•	•	•
Advanced heads-up display (HUD) system	–	–	•
Smart Key with push-button start	•	•	•
Automatic headlights	•	•	•
Escort headlights	•	•	•
Tilt and telescopic steering column	•	–	–
Power tilt and telescopic steering column	–	•	•
Trip computer	•	•	•
Auto-dimming rearview mirror	•	•	•
HomeLink® system ⁷	–	•	•
Compass	–	•	•
Power windows	•	•	•
Power door locks	•	•	•
Steering wheel-mounted audio controls	•	•	•
Steering wheel-mounted cruise control	•	•	•
Smart cruise control	–	–	•
Obstacle-detecting front windows	•	•	•
Illuminated vanity mirrors	•	•	•
LED interior mood lighting	–	•	•
Map lights	–	•	•
Wireless phone charger ³	–	–	•
Smart release trunk	•	•	–
Power open and close trunk (Smart open)	–	–	•
AUX and USB input ports	•	•	•
12V power outlets	•	•	•
Electronic parking brake	–	–	•
Power rear sunshade blind	–	•	•
Integrated rear door sunshades	–	•	•
Drive Mode Select (Eco/Comfort/Sport/Smart)	•	•	•

SEATING & TRIM

Leather seats	•	•	–
Premium quilted Nappa leather interior	–	–	•
Heated front seats	•	•	•
Heated rear seats	–	•	•
Air-cooled front seats	–	•	•
10-way power adjustable driver's seat with 2-way lumbar support	•	–	–
12-way power adjustable driver's seat with 4-way lumbar support	–	•	•
8-way power adjustable passenger seat	•	•	•
2-way power adjustable passenger seat lumbar support	–	•	•
Power driver's seat-cushion extension	–	•	•
Driver's seat memory function	–	•	•
Heated steering wheel	•	•	•
Leather-wrapped steering wheel	•	•	•
Leather-wrapped shift knob	•	•	•

• = Standard – = Not Available

SPECIFICATIONS

ENGINE

Type	3.3L, GDI, V6, aluminum block and heads
Valve train	DOHC, 4 valves per cylinder, Dual-Cam Variable Valve Timing (D-CVVT)
Horsepower	290 hp @ 6,400 rpm
Torque	253 lb.-ft. @ 5,200 rpm
Compression ratio	11.5:1
Intake	Variable intake system (VIS)
Drive type	Front wheel drive (FWD)
Transmission	8-speed Sportmatic automatic

DIMENSIONS, MM (IN.)

Wheelbase	2,855 (112)
Length	4,970 (196.7)
Width	1,870 (73.6)
Height	1,470 (57.9)
Ground clearance	140 (5.5)
Head room - 1 st /2 nd rows	1,020/962 (40.2/37.9)
Head room with sunroof - 1 st /2 nd rows	977/955 (38.5/37.6)
Shoulder room - 1 st /2 nd rows	1,482/1,435 (58.3/56.5)
Leg room - 1 st /2 nd rows	1,155/945 (45.5/37.2)
Hip room - 1 st /2 nd rows	1,436/1,431 (56.5/56.3)

CURB WEIGHT, KG (LB.)

18" wheels	1,648-1,691 (3,633-3,728)
19" wheels	1,710-1,723 (3,770-3,799)

BODY & CHASSIS

Layout	Front engine, front wheel drive
Body type	Steel unibody
Front suspension	Independent, MacPherson struts and gas shock absorber with dynamic dampers
Rear suspension	Independent, multi-link configuration with gas shock absorbers
Steering	Electric power steering (EPS)

BRAKES

Type	4-wheel anti-lock braking system (ABS), Electronic brake-force distribution (EBD), Brake Assist System (BAS)
Front, mm (in.)	320 (12.6) vented discs
Rear, mm (in.)	302 (11.9) Solid discs

CAPACITIES, L (CU. FT.)

Interior volume	3,050 (107.8)
Cargo capacity (trunk)	452 (16)
Fuel tank capacity, L (Imp. gal.)	70 (13.4)

FUEL ECONOMY, HIGHWAY/CITY, L/100KM

All trims	8.5/11.5
-----------	----------

1. Please note that your vehicle may not be equipped with all features described. This also applies to safety-related systems and functions. None of the features we describe are intended to replace the driver's responsibility to exercise due care while driving and are not a substitute for safe driving practices. Some features may have technological limitations. For additional information regarding the various features, including their limitations and restrictions, please refer to your vehicle's Owner's Manual. 2. When equipped with the navigation system, French voice commands may be limited. 3. Compatible smartphone required. Data rates may apply, please check with your wireless service provider. For wireless charging, certain smartphones may require a wireless charging-compatible case. 4. The Bluetooth® word mark and logos are registered trademarks owned by Bluetooth SIG, Inc. A compatible Bluetooth wireless technology-enabled cell phone is required to use Bluetooth hands-free wireless technology. 5. SiriusXM® satellite radio service includes 3 month trial and is available in the 10 provinces and three territories of Canada, and the 48 contiguous states of the U.S. Monthly subscription sold separately after three trial months. 6. Harman Kardon® is a registered trademark of Harman International Industries, Incorporated. 7. HomeLink® is a registered trademark of Johnson Controls, Inc. 8. Apple, the Apple logo and CarPlay are trademarks of Apple Inc., registered in the US and other countries. App Store is a service mark of Apple Inc. 9. Google, Google Play, Google Maps, and Android Auto are trademarks of Google Inc. 10. The Kia 5-year/100,000-km warranty includes various warranties and roadside assistance. Some restrictions apply. For more information call us at 1-877-542-2886 or visit to kia.ca.

EXTERIOR COLOURS

Snow White Pearl (P)



Pluto Brown (M)



Graphite (M)



Aurora Black

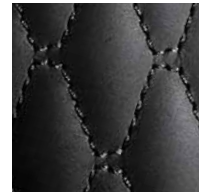


INTERIOR COLOURS

Black Leather



Black Quilted Nappa Leather



M = Metallic, P = Pearl
The exterior and interior colours in this brochure are as close to the actual vehicle production colours as the printing process allows.

WHEELS

18" machined-finish alloy wheel



19" dark satin chrome alloy wheel



Delivering world-class quality.



Kia is committed to producing exceptional vehicles with superb quality and reliability to suit your driving needs. From compact to crossover, every Kia delivers an extraordinary combination of precision engineering, outstanding performance, innovative features, and advanced safety systems.

STUNNING DESIGN

Under the direction of renowned President and Chief Design Officer Peter Schreyer — Kia vehicles have captured worldwide attention for their interior and exterior styling, which represents the collaborative work of designers who have created a look that makes every Kia recognizable at first sight. Today, the lineup consists of vehicles that fill owners, as well as Kia's designers, with pride.

EXTENSIVE RESEARCH AND DEVELOPMENT

Kia's R&D procedures are rigorous and exhaustive. At proving grounds around the world, vehicles undergo unrelenting tests. A world-class wind tunnel provides testing in winds up to 200 km/h. Utilizing heavy-rain-and-snowfall testing chambers and a road simulator, Kia puts its vehicles through punishing tests as part of a commitment to develop exceptionally durable and safe vehicles.

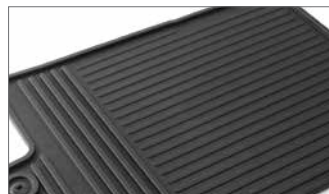


Provo concept

KIA | Genuine Parts & Accessories

Kia Accessories are built to the same high standards of quality as your vehicle. That means they fit right, work right, and look great. Talk to your Dealer today or visit kia.ca to explore accessory options for your Kia.

All-weather floor mats



Cargo tray



Accessory wheels



Rear bumper protector



Cargo net



* Available accessories may vary. See Dealer for details. Images shown for illustration purposes only.

Get the points.



Kia Member Rewards is an exclusive rewards program for Kia customers.

As a Kia Rewards Member, you'll earn points with every dollar you spend on maintenance service, parts and accessories at your servicing Kia dealer. Those Reward Points can be redeemed for discounts on future purchases — including the purchase of a new Kia. Plus earn Bonus Points on select items and services to collect rewards even faster.

Kia Member Rewards No-Charge Benefits

- Fuel fill-up with the delivery of your new Kia vehicle
- Local shuttle service
- Multi-point vehicle inspection with every service visit
- Windshield washer fill-up with every paid service

- Windshield wiper installation with wiper purchase
- Preferential rates on car rentals, nationwide
- 24/7 Roadside Assistance for your vehicle under Kia's 5-year/unlimited km warranty or Certified Pre-Owned warranty
- Email notification of exclusive Kia specials and events — a great way to earn Reward Points and save on future purchases

Become a Kia Premium Rewards Member:

Ask your Kia Dealer how you can enjoy even more benefits.

Enroll Today:

Becoming a Kia Rewards Member is easy. See your Kia Dealer today to join. Visit rewards.kia.ca for full terms and conditions.

We've got you covered.



Kia engineers are passionate about producing vehicles that are exceptionally well-designed and reliable. Their dedication to quality and attention to detail give Kia the confidence to back every model with an outstanding warranty program.

Our outstanding warranty coverage includes:

5-year/100,000 km - Worry-free comprehensive warranty covering virtually the entire vehicle¹⁰

5-year/100,000 km - Powertrain Warranty covering the engine, transmission, axles, differentials and driveshafts¹⁰

5-year/unlimited km - Roadside Assistance covers you in case of mechanical breakdown anywhere in North America¹⁰

1-year/20,000 km - First-year adjustments covering consumable items such as bulbs, wiper blades, fuses, brake pads, etc.¹⁰

8-year/130,000 km - Major Emission Components that guarantee that the car will conform with government emission regulations¹⁰

For more information visit kia.ca or call 1-877-542-2886

.....



Proud Partner

As the official automotive partner of Special Olympics Canada, Kia Canada is proud to be taking a hands-on role in helping to spread the message of acceptance and inclusion - as well as providing funds and transportation needs to support the daily and competitive sport programs that serve more than 42,000 children, youth and adults with an intellectual disability in communities all across Canada. Please visit SpecialOlympics.ca to learn more about this inspiring movement and how you can volunteer and/or donate to this very special cause.



facebook.com/kiacanada



twitter.com/kiacanada



youtube.com/kiacanada

All information contained herein was accurate and correct at the time of printing. Kia Canada Inc. reserves the right to make changes at any time without notice, and without any obligations as to colours, materials, specifications, features, accessories, packages, models and any applicable programs. Some vehicles shown may include optional equipment or may not be exactly as shown. Kia Canada Inc., by the publication and dissemination of this material, does not create any warranties, either expressed or implied, to any Kia products. See your Kia dealer or website for further details. Reproduction of the contents of this material without the expressed written approval of Kia Canada Inc. is prohibited. © Copyright 2017 Kia Canada Inc. Printed in Canada, September 2017.

