



The Power to Surprise

*ALL-NEW 2018*

*STINGER*



*stinger*

## EXPERIENCE PERFECT BALANCE

It began as a dream car: the Kia GT Concept. To bring this dream to reality, we turned to our design studio in Frankfurt, Germany that developed the concept car, to make sure that the Stinger remained faithful to the original design inspiration. Our criteria was unequivocal: it had to be nimble, fast, balanced, accommodating, luxurious and quiet – all wrapped in a muscular form. The Stinger not only fulfills those ambitions – it does so with authority, beginning with the 365-horsepower 3.3 litre twin-turbocharged V6 that delivers 376 lb.-ft. of torque. A gran turismo that achieves perfect balance – the all-new Stinger.



### TWIN TURBO

Stinger is powered by a 3.3 litre twin turbocharged V6 engine that produces an inspiring 365 horsepower and 376 lb.-ft. of torque.

### PADDLE SHIFTERS

Paddle shifters offer the selectability and added control of manual shifting in an 8-speed Sportmatic automatic transmission.





# GO WHERE YOU WANT, WHEN YOU WANT



#### ALL-WHEEL DRIVE

Stinger comes equipped with the enhanced traction and control of an all-wheel drive system that confidently grips the road in any condition.

#### DYNAMIC TORQUE VECTORING CONTROL

This feature monitors driver inputs and road conditions, automatically applying power and braking force to the appropriate wheels to maintain course in adverse conditions.

#### BRAKE FADE COMPENSATION

It automatically increases hydraulic pressure in the braking system as the temperatures rise, resulting in a more consistent and confident braking feel.

#### SPORT VARIABLE GEAR RATIO STEERING

Increases Stinger's steering responsiveness during spirited driving to elevate your driving experience.

It all comes down to a matter of feel. Stinger's precise ride and handling are the product of literally years of refinement. The journey included some of the most demanding testing grounds in the world, from the hair-raising 73 corners of the legendary Nürburgring circuit – to the frozen lakes of Arjeplog, Sweden. All the learning was applied to make the connection between driver, car and road become ever more dynamic.

#### BREMBO® BRAKES

Powerful and fully-vented with signature red, quad-piston front and dual-piston rear calipers.

#### DYNAMIC SUSPENSION

Electronically controlled and integrated with Drive Mode Select, which adjusts steering boost, shift points, throttle mapping, and suspension damping.







## HIGH-END PERFORMANCE HIGH-END COMFORT

One part adrenaline rush – one part sanctuary. Stinger creates its own rules, while paying homage to the elegance and craftsmanship of classic gran turismos. Watch the world race by from the unparalleled comfort of your deeply contoured, highly supportive driver's seat. It serves as an open invitation to rule the road – as far as the road takes you.



### DIAMOND-SHAPED STITCHING

Stinger's cabin is exquisitely crafted, with meticulous care put into every stitch and seam to uphold the highest attention to detail. The hand-stitched leather steering wheel is finished with a diamond-shaped pattern, crafted using methods that master leather artisans have developed over centuries.

### NAPPA LEATHER

Nothings says luxury like the supple feel of genuine Nappa leather. This available material perfectly complements the deeply contoured seating.

### DRIVER'S SEAT MEMORY FUNCTION

Stinger remembers you. The integrated memory system can set preferences for up to two drivers including seating, steering wheel and sideview mirror positioning.

### HEATED & AIR-COOLED SEATS

Heated front seats provide comfort through Canada's long winters, while available air-cooled front seats enhance comfort through hot summer days.

### FULL-WIDTH PREMIUM SUNROOF

Stinger is as bright and airy as it is responsive and comfortable.

### HEATED SPORT STEERING WHEEL

Stinger features a D-shaped, sport heated steering wheel that takes the edge off cold winter mornings.

International model shown.



# PILOT'S LICENCE NOT REQUIRED

**HEADS-UP DISPLAY (HUD)**  
The available HUD projects vital information onto the windshield so you can keep your focus on the wide open road ahead.

**5 DRIVE MODES**  
Stinger includes Drive Mode Select that adjusts steering boost, shift points, throttle mapping and suspension damping to give you a choice of Eco, Smart, Comfort, Sport or Custom modes.

**8" MULTIMEDIA INTERFACE WITH NAVIGATION**  
An integrated navigation system is available as part of the advanced multimedia touchscreen interface.<sup>3</sup>

**APPLE® AND ANDROID™ SMARTPHONE INTEGRATION**  
Stinger offers true smartphone integration through the Apple CarPlay® and Android Auto™ systems, keeping you connected through voice-activated messaging, navigation and media selection.<sup>2,7,8</sup>

**HARMAN KARDON® PREMIUM AUDIO SYSTEM**  
The available Harman Kardon® premium sound system features 15 speakers and Kia's first under-seat mounted subwoofer.<sup>9</sup>

**WIRELESS CHARGING**  
Stinger helps keep your smartphone fully juiced with available built-in wireless charging.<sup>2</sup>

Calling the Stinger's driver environment a cockpit isn't an overstatement. While the intuitive controls prove the cockpit's functionality, the design is equally compelling. Whether it's the choice of materials, such as leather trim and the selective use of genuine aluminum accents, or the aeronautical design of the spoked circular vents, this is one cockpit that looks and feels like a fresh interpretation of a gran turismo.



**UVO** | **Intelligence™**

Access a world of support with UVO Intelligence™ connected car services. UVO includes remote services you'll appreciate, such as the ability to Start/Stop your car and set the Climate Control remotely from your smartphone. Also included are a series of safety and security services, as well as on-demand vehicle diagnostics. Better yet, the service is free for the first five years.<sup>4</sup>

International model shown.





## THE REBIRTH OF **THE GRAN TURISMO**

Take a look at the sweeping silhouette of Stinger's profile. It tells you so much about what separates this gran turismo from all other vehicles. The fastback design not only creates a dramatic sleek look – its highly aerodynamic shape minimizes drag. Stinger's athletic stance also produces remarkable handling thanks to the well-balanced weight distribution. The gran turismo is back.





# DESIGNED FOR AN ELEGANT ESCAPE

Ready to take on the road and all its contours? The more ambitious your journey, the more gear you want to bring along for the ride. That's the beauty of a true gran turismo. With its uncompromising approach to performance, utility and comfort, Stinger delivers the smartest expression of a gran turismo yet.

## SPACIOUS CABIN

The Stinger cabin is spacious front and back, with rear seats that are as adaptable as they are comfortable.

## HIDDEN UNDER-FLOOR STORAGE

There are many places to stow your valuables in the Stinger, including an under-floor compartment for concealing smaller objects and a rear cargo cover to maintain privacy.

## 60/40 SPLIT-FOLDING REAR SEATS

Stinger offers a generous cargo area of 660 litres (23.3 cu. ft.) behind the rear seats. When you travel with oversized objects, you can fold the rear seats to extend the rear cargo area to a full 1,158 litres (40.9 cu.ft.).

## SMART KEY

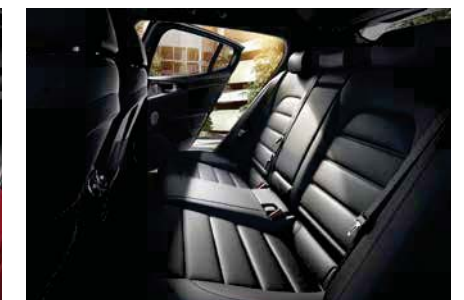
Just stand near your Stinger with the Smart key in your possession and its sensors can work their magic, unlocking doors at a touch of the exterior door handle button.

## SMART WELCOME LIGHTING

When your Smart key senses you close by it automatically turns on the perimeter and interior lights, while also unfolding the power sideview mirrors.

## SMART HATCH

For easy access to the rear cargo area, the smart hatch will recognize your Smart key as you stand at the rear of your Stinger. After three seconds the system automatically opens the power rear hatch.





# SAFETY NEVER TAKES A DAY OFF

At Kia, the priority is always on improving safety. Advanced sensor systems, strategically placed airbags, and breakthroughs in material design that have led to stronger body construction are just a few of the ways we never stop working to enhance your protection.

## **AUTONOMOUS EMERGENCY BRAKING**

The available system is designed to detect and alert you if a potential front collision is imminent, and can automatically apply the brakes, if necessary.<sup>1</sup>

## **ADVANCED SMART CRUISE CONTROL**

Available smart cruise control technology maintains a safe distance from vehicles in front by automatically adjusting acceleration and braking – even in stop and go traffic.<sup>1</sup>

## **LANE KEEPING ASSIST**

If the available system detects your Stinger getting close to lane markers, it can apply corrective steering to help prevent you from drifting into another lane.<sup>1</sup>

## **DRIVER ATTENTION ALERT**

DAA works with the available lane keeping assist system to detect if a fatigued driver's attention level has been significantly reduced – then gives a warning signal to take a break if needed.<sup>1</sup>

## **360° CAMERA MONITORING SYSTEM**

The available 360° camera monitoring system uses four cameras to provide a real-time overhead view of your Stinger, to ease your manoeuvring in and out of parking spaces.<sup>1</sup>

## **REAR CROSS-TRAFFIC ALERT**

This system is designed to give you visual and audible alerts to help warn of traffic coming toward you from either side while backing up.<sup>1</sup>



## **HIGH-STRENGTH STEEL**

Stinger's chassis is comprised of 55 percent advanced high-strength steel, providing an ultra-stiff foundation.

## **SEVEN AIRBAGS**

This includes dual advanced front, dual front side seat, driver's knee, and full-length side curtain airbags.





## FEATURES

### GT

EXTERIOR	COMFORT	TECHNOLOGY	SAFETY
<ul style="list-style-type: none"> <li>• 19" machined-finish alloy wheels</li> <li>• Michelin performance tires</li> <li>• Temporary spare tire</li> <li>• Automatic headlights</li> <li>• Dual-function LED headlights</li> <li>• LED daytime running lights</li> <li>• LED positioning lights</li> <li>• LED taillights (bar type)</li> <li>• Headlight escort function</li> <li>• Welcome lighting system</li> <li>• Aeroblade wipers</li> <li>• Solar glass</li> <li>• Sound-reducing front side door glass</li> <li>• Full-width premium sunroof</li> <li>• Dark chrome sideview mirrors</li> <li>• Heated sideview mirrors</li> <li>• Automatic power folding sideview mirrors</li> <li>• Auto-dimming sideview mirrors</li> <li>• Sideview mirror signal repeaters</li> <li>• Body coloured door handles</li> <li>• Dark chrome exterior accents</li> <li>• Rear spoiler</li> <li>• Integrated dual exhaust</li> </ul>	<ul style="list-style-type: none"> <li>• Leather seats</li> <li>• 8-way power adjustable driver's seat</li> <li>• 4-way driver's seat lumbar support</li> <li>• 8-way power adjustable passenger seat</li> <li>• 4-way passenger seat lumbar support</li> <li>• Driver's seat memory function</li> <li>• Heated front seats</li> <li>• Power tilt and telescopic steering wheel</li> <li>• Heated steering wheel</li> <li>• Sport steering wheel (D-shaped) with metal accent</li> <li>• Leather and chrome wrapped shift knob</li> <li>• Carbon fibre finish interior accents</li> <li>• 60:40 split-folding rear seats</li> <li>• Stainless steel door scuff plates</li> <li>• Stainless steel sport pedals</li> <li>• Sunglasses holder</li> </ul>	<ul style="list-style-type: none"> <li>• Air conditioning</li> <li>• Dual-zone automatic climate control</li> <li>• 7" Display audio</li> <li>• 9-speaker audio</li> <li>• AM/FM/MP3/satellite radio<sup>5</sup></li> <li>• USB audio input and charging port</li> <li>• AUX audio input port</li> <li>• Bluetooth® hands-free cell phone connectivity<sup>2,6</sup></li> <li>• Apple CarPlay® and Android Auto™ smartphone integration<sup>2,7,8</sup></li> <li>• Dual 12V cabin power outlets</li> <li>• Steering wheel mounted audio controls</li> <li>• Steering wheel mounted paddle shifters</li> <li>• Steering wheel mounted cruise control</li> <li>• Electronic parking brake</li> <li>• Smart key with push-button start</li> <li>• UVO Intelligence™ connected car services<sup>4</sup></li> <li>• 3.5" Mono TFT cluster</li> <li>• Auto-dimming rearview mirror</li> <li>• Obstacle-detecting front windows</li> <li>• LED interior mood lighting</li> <li>• Smart power liftgate</li> </ul>	<ul style="list-style-type: none"> <li>• 7 airbags (driver knee, dual advanced front, dual side curtain, dual front side seat)</li> <li>• Electronic stability control (ESC)</li> <li>• 4-wheel anti-lock braking system (ABS)</li> <li>• Hill-assist control (HAC)</li> <li>• Low washer fluid warning indicator</li> <li>• Blind spot detection system (BSD)<sup>1</sup></li> <li>• Rear cross traffic alert (RCTA)<sup>1</sup></li> <li>• Rear parking sensors<sup>1</sup></li> <li>• Rearview camera<sup>1</sup></li> </ul>

### GT LIMITED adds to or upgrades from GT

EXTERIOR	COMFORT	TECHNOLOGY	SAFETY
<ul style="list-style-type: none"> <li>• Dynamic directionally adaptive headlights</li> <li>• Rain sensing wipers</li> </ul>	<ul style="list-style-type: none"> <li>• Premium Nappa leather seats</li> <li>• Power driver's seat cushion extension</li> <li>• 4-way driver's seat air cell lumbar support</li> <li>• Power adjustable driver's seat bolsters</li> <li>• Aluminum interior accents</li> <li>• Premium black headliner material</li> <li>• Heated rear seats</li> <li>• Air-cooled front seats</li> <li>• Luggage net</li> </ul>	<ul style="list-style-type: none"> <li>• 8" multimedia interface with integrated navigation<sup>3</sup></li> <li>• 15-speaker Harman Kardon® premium audio system<sup>9</sup></li> <li>• Wireless phone charger<sup>2</sup></li> <li>• Advanced smart cruise control (ASCC)<sup>1</sup></li> <li>• 7" Supervision LCD/TFT instrument cluster</li> <li>• Advanced heads-up display (HUD) system</li> <li>• HomeLink® system<sup>10</sup></li> </ul>	<ul style="list-style-type: none"> <li>• Lane-keeping assist system (LKAS)<sup>1</sup></li> <li>• Driver attention alert system (DAA)<sup>1</sup></li> <li>• Autonomous emergency braking system (AEB)<sup>1</sup></li> <li>• 360° camera monitoring system<sup>1</sup></li> </ul>

## SPECIFICATIONS

POWERTRAIN	
Engine type	3.3L, twin turbocharged GDI, V6
Engine valve train	DOHC, 4 valves per cylinder, Dual-Cam Variable Valve Timing (D-CVVT)
Engine intake	Variable intake system (VIS)
Engine compression ratio	10:1
Engine material	Aluminum block and heads
Fuel management system	Gasoline Direct Injection (GDI)
Horsepower	365 hp @ 6,000 rpm
Torque	376 lb.-ft. @ 1,300-4,500 rpm
Transmission	8-speed Sportmatic automatic
Drive type	All-wheel drive (AWD)
DIMENSIONS, MM (IN.)	
Wheelbase	2,905 (114.3)
Length	4,830 (190.2)
Width	1,870 (73.6)
Height	1,400 (55.1)
Ground clearance	130 (5.1)
Head room (front/rear)	974/939 (38.3/36.9)
Shoulder room (front/rear)	1,433/1,391 (56.4/54.8)
Hip room (front/rear)	1,410/1,424 (55.5/56)
Leg room (front/rear)	1,083/925 (42.6/36.4)
WEIGHT	
Curb weight, kg (lbs.)	1,873 - 1,889 (4,129 - 4,165)
BODY & CHASSIS	
Vehicle layout	Front engine, all-wheel drive (AWD)
Body type	Steel unibody
Front suspension	Independent, MacPherson struts and gas shock absorber with dynamic dampers
Rear suspension	Independent, multi-link configuration with gas shock absorbers
Steering type	Electric power steering (EPS)
BRAKES	
Brake type	Electronic brake-force distribution (EBD), Brake Assist System (BAS)
ABS type	4-wheel anti-lock braking system (ABS)
Front brake size, mm (in.)	350 (13.8) vented discs
Rear brake size, mm (in.)	340 (13.4) vented discs
CARGO, L (CU. FT.)	
Cargo capacity, rear seats up / rear seats folded	660/1,158 (23.3/40.9)
FUEL CONSUMPTION	
Fuel consumption rating	<i>Please visit <a href="http://kia.ca">kia.ca</a> for the latest figures</i>
Fuel tank capacity, L	60
Recommended fuel	Premium unleaded



We've got you covered.

Kia engineers are passionate about producing vehicles that are exceptionally well-designed and reliable. Their dedication to quality and attention to detail give Kia the confidence to back every model with an outstanding warranty program.

#### Our outstanding warranty coverage includes:

**5-year/100,000 km** – Worry-free comprehensive warranty covering virtually the entire vehicle<sup>11</sup>

**5-year/100,000 km** – Powertrain Warranty covering the engine, transmission, axles, differentials and driveshafts<sup>11</sup>

**5-year/unlimited km** – Roadside Assistance covers you in case of mechanical breakdown anywhere in North America<sup>11</sup>

**1-year/20,000 km** – First-year adjustments covering consumable items such as bulbs, wiper blades, fuses, brake pads, etc.<sup>11</sup>

**8-year/130,000 km** – Major Emission Components that guarantee that the car will conform with government emission regulations<sup>11</sup>

**For more information** visit [kia.ca](http://kia.ca) or call 1-877-542-2886

1. Please note that your vehicle may not be equipped with all features described. This also applies to safety-related systems and functions. None of the features we describe are intended to replace the driver's responsibility to exercise due care while driving and are not a substitute for safe driving practices. Some features may have technological limitations. For additional information regarding the various features, including their limitations and restrictions, please refer to your vehicle's Owner's Manual. 2. Compatible smartphone required. Data rates may apply, please check with your wireless service provider. For wireless charging, certain smartphones may require a wireless charging-compatible case. 3. When equipped with the navigation system, French voice commands may be limited. 4. UVO Intelligence only available on select models and trims. Specific functionality may vary between models and trims. Destination Search is only available on vehicles with a navigation head unit. Certain functions are only accessible on the smartphone app and/or customer web portal and/or in-vehicle head unit. Service is free for the first five years from the day the vehicle was first registered. Monthly subscription may be applicable after the free period. Please consult your dealer for details. 5. SiriusXM satellite radio service includes 3 month trial and is available in the 10 provinces and three territories of Canada, and the 48 contiguous states of the U.S. Monthly subscription sold separately after three trial months. 6. The Bluetooth word mark and logos are registered trademarks owned by Bluetooth SIG, Inc. 7. Apple, the Apple logo, CarPlay, and iPhone are trademarks of Apple Inc., registered in the US and other countries. App Store is a service mark of Apple Inc. 8. Google, Google Play, Google Maps, and Android Auto are trademarks of Google Inc. 9. Harman Kardon and Infinity are registered trademarks of Harman International Industries, Inc. Lexicon, the Lexicon logo, Logic 7 and the Logic 7 logo are registered trademarks of Lexicon, Inc., a Harman International company. All rights reserved. 10. HomeLink is a registered trademark of Johnson Controls, Inc. 11. The Kia 5-year/100,000-km warranty includes various warranties and roadside assistance. Some restrictions apply. For more information call us at 1-877-542-2886 or visit to [kia.ca](http://kia.ca).



## EXTERIOR COLOURS

California Red (M)



Atomic Blue (M)



Ghost Grey (M)



Snow White Pearl (P)



Aurora Black



Thunder Grey (M)



M = Metallic, P = Pearl

The exterior and interior colours in this brochure are as close to the actual vehicle production colours as the printing process allows.

## INTERIOR COLOURS

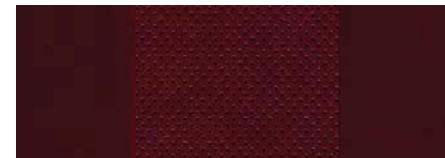
### GT

Black Leather



### GT LIMITED

Red Nappa Leather  
(available with Snow White Pearl, Aurora Black and Thunder Grey exterior colours)



Black Nappa Leather



## WHEELS



19" machined-finish alloy wheel

# Delivering world-class quality.



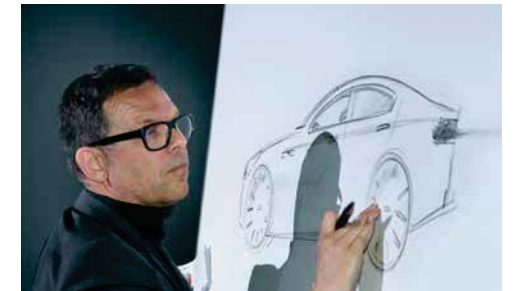
Kia is committed to producing exceptional vehicles with superb quality and reliability to suit your driving needs. From compact to crossover, every Kia delivers an extraordinary combination of precision engineering, outstanding performance, innovative features, and advanced safety systems.

### STUNNING DESIGN

Under the direction of renowned President and Chief Design Officer Peter Schreyer — Kia vehicles have captured worldwide attention for their interior and exterior styling, which represents the collaborative work of designers who have created a look that makes every Kia recognizable at first sight. Today, the lineup consists of vehicles that fill owners, as well as Kia's designers, with pride.

### EXTENSIVE RESEARCH AND DEVELOPMENT

Kia's R&D procedures are rigorous and exhaustive. At proving grounds around the world, vehicles undergo unrelenting tests. A world-class wind tunnel provides testing in winds up to 200 km/h. Utilizing heavy-rain-and-snowfall testing chambers and a road simulator, Kia puts its vehicles through punishing tests as part of a commitment to develop exceptionally durable and safe vehicles.



Telluride SUV concept

## KIA | Genuine Parts & Accessories

Kia Accessories are built to the same high standards of quality as your vehicle. That means they fit right, work right, and look great. Talk to your Dealer today or visit [kia.ca](http://kia.ca) to explore accessory options for your Kia.

All-weather floor mats



Suit hanger



Accessory wheels



Rear bumper protector



Cargo liner



\* Available accessories may vary. See Dealer for details. Images shown for illustration purposes only.

## Get the points.



### Kia Member Rewards is an exclusive rewards program for Kia customers.

As a Kia Rewards Member, you'll earn points with every dollar you spend on maintenance service, parts and accessories at your servicing Kia dealer. Those Reward Points can be redeemed for discounts on future purchases — including the purchase of a new Kia. Plus earn Bonus Points on select items and services to collect rewards even faster.

### Kia Member Rewards No-Charge Benefits

- Fuel fill-up with the delivery of your new Kia vehicle
- Local shuttle service
- Multi-point vehicle inspection with every service visit
- Windshield washer fill-up with every paid service

- Windshield wiper installation with wiper purchase
- Preferential rates on car rentals, nationwide
- 24/7 Roadside Assistance for your vehicle under Kia's 5-year/unlimited km warranty or Certified Pre-Owned warranty
- Email notification of exclusive Kia specials and events — a great way to earn Reward Points and save on future purchases

### Become a Kia Premium Rewards Member:

Ask your Kia Dealer how you can enjoy even more benefits.

### Enroll Today:

Becoming a Kia Rewards Member is easy. See your Kia Dealer today to join. Visit [rewards.kia.ca](http://rewards.kia.ca) for full terms and conditions.





Proud Partner

As the official automotive partner of Special Olympics Canada, Kia Canada is proud to be taking a hands-on role in helping to spread the message of acceptance and inclusion - as well as providing funds and transportation needs to support the daily and competitive sport programs that serve more than 42,000 children, youth and adults with an intellectual disability in communities all across Canada. Please visit [SpecialOlympics.ca](http://SpecialOlympics.ca) to learn more about this inspiring movement and how you can volunteer and/or donate to this very special cause.



[facebook.com/kiacanada](https://facebook.com/kiacanada)



[twitter.com/kiacanada](https://twitter.com/kiacanada)



[youtube.com/kiacanada](https://youtube.com/kiacanada)

All information contained herein was accurate and correct at the time of printing. Kia Canada Inc. reserves the right to make changes at any time without notice, and without any obligations as to colours, materials, specifications, features, accessories, packages, models and any applicable programs. Some vehicles shown may include optional equipment or may not be exactly as shown. Kia Canada Inc., by the publication and dissemination of this material, does not create any warranties, either expressed or implied, to any Kia products. See your Kia dealer or website for further details. Reproduction of the contents of this material without the expressed written approval of Kia Canada Inc. is prohibited. © Copyright 2017 Kia Canada Inc. Printed in Canada, November 2017.

