

1987

M E R C U R Y

TOPAZ



**OUR COMMITMENT TO QUALITY AND SAFETY
ISN'T JUST SOMETHING WRITTEN ON PAPER.
IT'S BUILT INTO OUR CARS.**

There's clear evidence that it's working. Our cars have been the highest quality American-built cars for six consecutive years according to a 1986 sur-

*vey of car owners.**

Our commitment to quality and safety goes even beyond the way we build our cars. The sales and service

staffs at our dealerships are part of that commitment. They're dedicated to your satisfaction as a Mercury owner.

With us, as with all the rest of Ford Motor Company, Quality is Job 1 six years running.

**Based on an average of owner-reported problems in the first three months of service of '86 models and in a six-month period on '81-'85 models designed and built in North America.*



Topaz LS 4-door with all-wheel drive in Medium Scarlet. Some features shown may be optional. See option list on page 18.

**NEW TOPAZ ALL-WHEEL-DRIVE OPTION.
A SEE-THROUGH VIEW OF WHY IT CAN
SEE YOU THROUGH PRACTICALLY ANYTHING.**

With its front-wheel drive, Topaz delivers all the traction a driver will need in most situations.

Most, but not all.

And that is precisely why every new Topaz can now be ordered with this impressive all-wheel-drive option. It includes the 2.3-liter HSO engine and

automatic transmission.

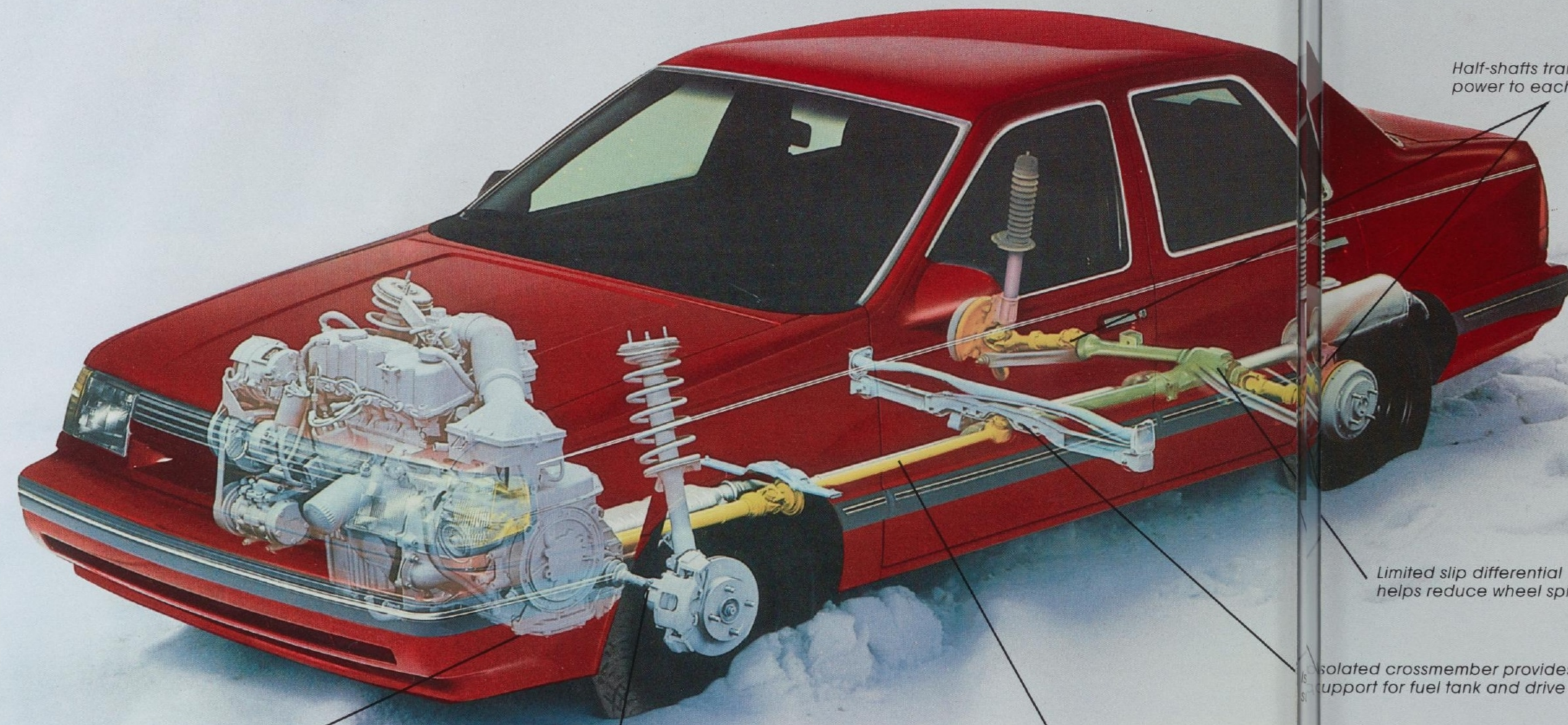
Hit a switch and you have power running through all four wheels instead of just two. The result is a dramatic

increase in traction. This system allows you to switch to or from all-wheel drive even while in motion.

The system was designed

specifically for drivers who must cope with ice, snow, muddy roads or just appreciate the added confidence of on-demand all-wheel drive.

The beauty of this system is that it gives this reserve all-wheel-drive capability without compromising on appearance or ride comfort.



Half-shafts transmit power to each rear wheel.

Limited slip differential helps reduce wheel spin.

Isolated crossmember provides support for fuel tank and drive shaft.

Power is transmitted to rear drive shaft from final drive gear in transaxle.

Normal front-drive half-shaft.

Drive shaft delivers power to rear differential.



Convenient dash-mounted switch allows you to change to or from all-wheel drive even while in motion.

**THE REAL BEAUTY OF THE WAY IT LOOKS
IS THE WAY IT WORKS.**

*The shape before you
appears elegantly simple.
It is not.*

*In fact, it is a very complex
shape achieved only through*

*extensive computer-aided
design and the culmination of
more than 450 hours of wind-
tunnel testing. The result is
an impressive level of aero-*

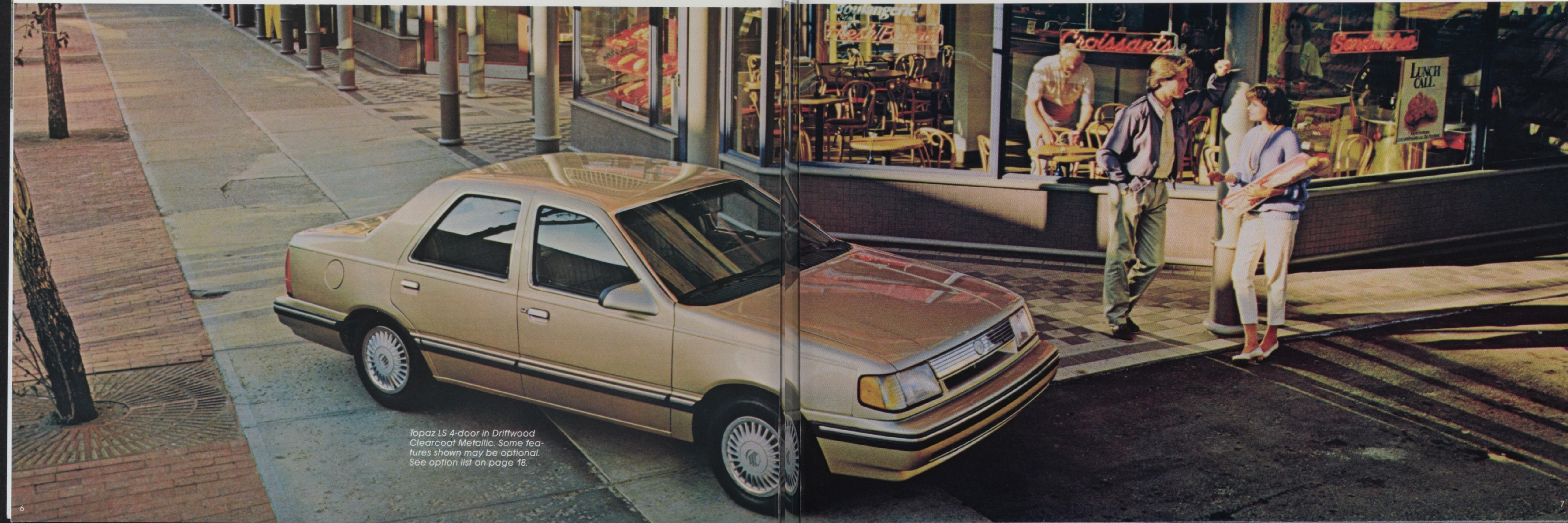
*dynamic efficiency which
translates into improved
fuel efficiency, reduced wind
noise and better handling at
highway speeds.*

*It is also a strong shape.
Topaz features unitized
body construction. It com-
bines body and frame in a
unified structure welded end-*

*to-end to form a high strength
passenger capsule that is
both weight- and space-
efficient.*

Equally impressive are

*Topaz's front-wheel drive, effi-
cient 2.3-liter 4-cylinder engine
and fully independent suspen-
sion—something you won't find
on many cars in this class.*



*Topaz LS 4-door in Driftwood
Clearcoat Metallic. Some fea-
tures shown may be optional.
See option list on page 18.*

**TOPAZ IS FULL OF SURPRISES
INCLUDING A SURPRISINGLY ROOMY
INTERIOR.**

It hardly seems appropriate to begin a discussion of interior room by talking about engine placement, but in the case of Topaz it is entirely correct.

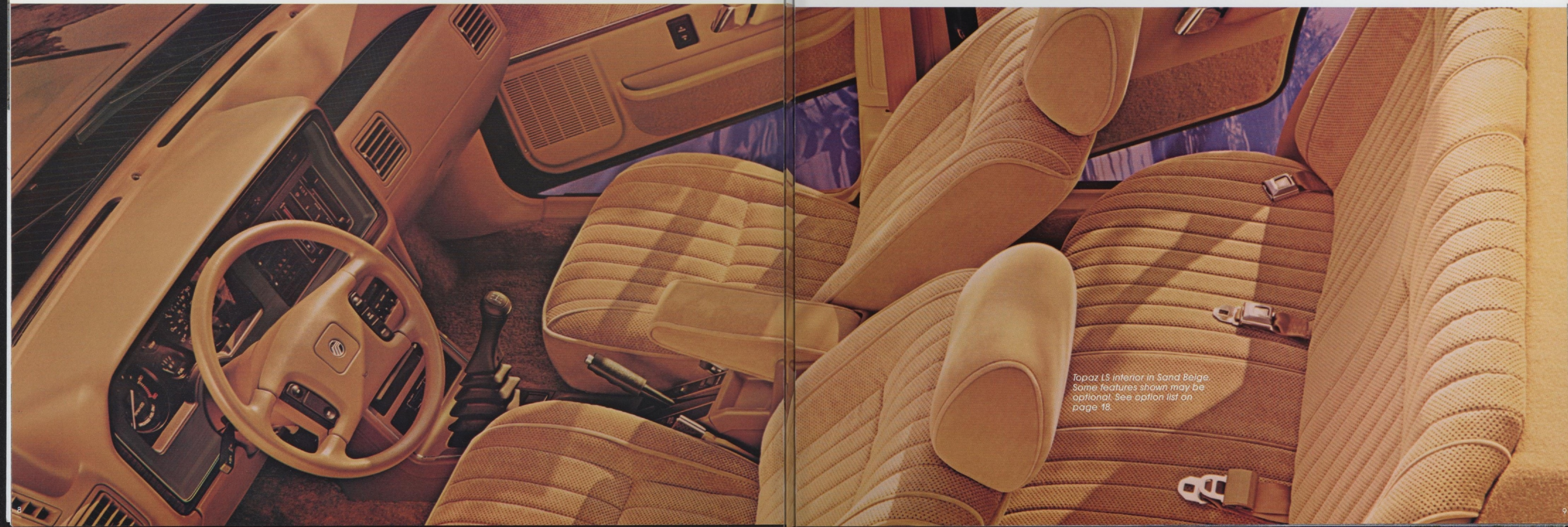
The engine in Topaz is mounted sideways, not straight down the center as tradition would have it. This allowed the engineers to

make the engine compartment shorter and the passenger compartment longer than would have otherwise been possible.

The result is a surprisingly roomy interior. Whether you select Topaz in 2-door or 4-door body style, it is a true 5-passenger sedan.

The two individual low-back front seats each have fully reclining capabilities. A six-way power adjustable driver's seat option is also

available on all Topaz models.



Topaz LS interior in Sand Beige. Some features shown may be optional. See option list on page 18.

**TOPAZ GS SPORT. THE SPORTS SEDAN
YOU CAN JUSTIFY
IN VERY PRACTICAL TERMS.**

The Topaz GS Sport satisfies the emotional desires for owning a sports sedan without asking you to forsake the practical reasons for

owning Topaz. Up front, it has the most powerful engine available in the Topaz line. It is the 2.3-liter high specific output (HSO)

4-cylinder engine with electronic fuel injection (EFI). The final drive ratio is also increased for quicker acceleration.

Performance radial tires on cast-aluminum wheels are matched with a specially tuned suspension for improved handling.

There are special appointments inside and out on Topaz GS Sport. See page 18 for complete GS Sport details.



Topaz GS Sport 2-door in Oxford White. Some features shown may be optional. See option list on page 18.

THERE REALLY ISN'T ANY SUCH THING AS A "BASIC" TOPAZ

Every Topaz comes with an extensive list of standard features. It makes Topaz a well-equipped car before you ever look at an option list.

When you say "Topaz," you're talking about front-wheel drive, fully independent suspension, nitrogen gas-pressurized struts, individ-

ual reclining front seats, power assisted rack-and-pinion steering, electronic AM/FM stereo radio, 5-mph impact bumpers, temperature

gauge, tachometer, 5-speed overdrive manual transmission and more.

And for 1987, 4-door versions of Topaz GS and LS are

available with a supplemental driver air bag restraint system option.



Topaz GS 4-door in Medium Shadow Blue. Some features shown may be optional. See option list on page 18.

YOU'LL FIND TOPAZ'S INTERIOR INCLUDING INSTRUMENTATION VERY USER-FRIENDLY.

The designers and engineers responsible for Topaz paid special attention to ergonomics—the study of the relationship between man

and machine. The ultimate test of this science is designing an environment in which the driver feels completely at ease and in control.

So, if you feel at home in Topaz, there's a good reason for it.



Topaz GS interior in Regatta Blue (left).
Topaz GS Sport Group interior in Smoke (above).
Some features shown may be optional.
See option list on page 18.



**TOPAZ'S SAFETY SYSTEMS
USE ADVANCED TECHNOLOGY TO
PROVIDE OCCUPANT PROTECTION.**

The Topaz safety systems include seat belts front and rear and an optional supplemental air bag restraint system for the driver.

Optional Supplemental Driver Air Bag Restraint System. Mercury Topaz is one of the first American-built cars to offer the additional protection of a supplemental driver air bag restraint system. A key word is supplemental. This system is not intended to replace lap and shoulder belts. It is to be used in combination with them.

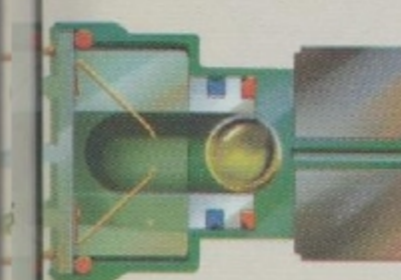
Laboratory testing has shown the supplemental driver air bag, combined with properly used safety belts, can provide extra protection against chest and face injuries that might occur in severe front-end impacts.

The Topaz system includes four sensors in the forward portion of the car. They are located on the left and right front side members, the radiator support and in the passenger compartment on the cowl. They discriminate between those impacts that warrant deployment of the air bag and those that do not.

It is a proven system. It has been field tested in thousands of cars and driven millions of miles. And to this date, not one single case of accidental air bag deployment has been reported by users.

Buckle Up! Every Topaz has a pair of front-seat integral lap and shoulder belts and three rear-seat lap belts. Seat belts are the most effective safety device available and their use is now mandatory in many states.

Proper use of child-restraint systems is important too. In fact, most states now



Air bag deployment is governed by four crash sensors which respond to the force and direction of impact.

require use of these safety devices. Ford Motor Company's Tot-Guard Safety Seat and Infant Carrier are designed to meet or exceed all applicable federal standards.

Regular use of both seat belts and child restraints is extremely important—whether you're driving around the block or across the country.



Air bag inflates in approximately 40 milliseconds.

Built-in safety. Topaz's doors are built of strong double-panel welded construction. Inside each door is a high-strength steel beam. It helps the doors withstand a test load that's twice as great as Topaz's entire weight.

Four-door Topaz models have child-proof rear-door locks for an extra measure of safety. The inside rear door handles can be deactivated to eliminate the possibility of an accidental opening by a child riding in the rear seat. The doors can still be opened from the outside when unlocked.

A high-strength steel beam is inside each Topaz door for added protection.



Quick and easy engine diagnosis.

Both of Topaz's gas-fueled engines are equipped with Ford Motor Company's fourth generation EEC-IV Electronic Engine Control system. It continually monitors and regulates engine functions including fuel metering, ignition timing and exhaust recirculation to help Topaz run smoothly and efficiently. Its self-test feature stores a record of malfunctions. A service person can quickly diagnose trouble through test equipment like this Self-Test Automatic Readout (STAR) unit that provides instant testing and analysis of EEC-IV's many subsystems.

**SELECTED OPTIONAL AND STANDARD FEATURES
THAT MAKE YOUR TOPAZ EVERY BIT AS SATISFYING
AS YOU WANT IT TO BE.**

ENGINES

Type	2.3L HSC Inline 4-cylinder	2.3L HSO Inline 4-cylinder
Displacement	2.3 liters	2.3 liters
Horsepower (SAE net)	86 @ 4000 rpm	100 @ 4600 rpm
Torque (SAE net)	124 lb-ft @ 2800 rpm	125 lb-ft @ 3200 rpm
Fuel delivery	Electronic fuel injection	Electronic fuel injection
Compression ratio	9.0:1	9.0:1
Engine control	EEC-IV, Electronic Engine Control	EEC-IV, Electronic Engine Control

TRANSMISSIONS

Manual	5-speed with 5th gear overdrive and self-adjusting clutch linkage
Automatic	3-speed with 62 percent mechanical drive in 2nd gear and 93 percent mechanical drive in 3rd

SUSPENSION

Front	Independent MacPherson nitrogen gas-pressurized struts with strut mounted coil springs, stabilizer bar, forged lower control arms and cast steering knuckles
Rear	Independent parallel 4-bar with MacPherson nitrogen gas-pressurized struts, coil springs, parallel suspension arms and double bayonet tie rods

STEERING

Type	Power assist rack-and-pinion with 18.3:1 overall ratio on center
------	--

BRAKES

Type	Dual hydraulic (diagonally linked front to rear) with power assist
Front	9.3-inch disc
Rear	8.0-inch drum
Brake swept area	2172 sq. in.

DIMENSIONS 2-door and 4-door (in inches)

Wheelbase	99.9
Overall length	177.0
Overall height	52.7
Overall width	68.3
Track, front/rear	54.9/57.6
Headroom, front/rear	37.5/36.9
Legroom, front/rear	41.5/36.0
Shoulder room, front/rear	53.2/53.3
Hiproom, front/rear	52.9/51.4

CAPACITIES

Cargo volume	13 cu. ft.
Fuel	15.4 gal. 14.2 gal. with AWD option
Oil	4 qt.
Engine coolant	8.1 qt.
Curb weight (lb.)	2503 (2-door)/2557 (4-door)

S - Standard Feature
0 - Optional Feature

MERCURY TOPAZ

FUNCTIONAL FEATURES

	GS	GS SPORT	LS
Air bag supplemental restraint system, driver's side (4-door only)	0	—	0
2.3-liter HSC engine	S	—	S
2.3-liter HSO engine	0	S	0
5-speed manual transmission	S	S	S
3-speed automatic transmission	0	0	0
All-wheel drive (requires automatic and HSO engine)	0	0	0
3.73 final drive ratio (manual trans.)	—	S	—
Maintenance-free 48 amp-hr battery	S	S	S
65-amp alternator	S	S	S
Electronic voltage regulator	S	S	S
Aluminized exhaust system corrosion protection	S	S	S
Self-adjusting clutch linkage	S	S	S
Power assist rack-and-pinion steering	S	S	S
Touring suspension	—	—	S
Sport suspension	—	S	—
Heavy duty battery	0	0	0
Tinted glass	S	S	S
Electric rear window defroster	0	0	S
Side window demisters	S	S	S
Engine block heater	0	0	0
Rear child-proof locks	S	S	S

EXTERIOR FEATURES

Aero halogen headlamps	S	S	S
5-mph impact bumpers	S	S	S
Corrosion protection including precoated steel, cathodic electrocoat paint primer and electrostatically applied paint	S	S	S
Lower bodyside protective urethane coating	S	S	S
Rear decklid luggage rack	0	S	0

INTERIOR COMFORT AND CONVENIENCE FEATURES

Air conditioning	0	0	0
Low-back individual reclining front seats in cloth	S	—	S
Sport bucket seats with red piping	—	S	—
Upgraded cloth upholstery	—	—	S
6-way power driver's seat	0	0	0
Black leather-wrapped steering wheel	—	S	—
Tilt steering wheel	0	0	S
Speed control	0	0	0
Power flow-through ventilation	S	S	S
4-speed heater/defroster	S	S	S
2-speed windshield wipers	S	S	S
Interval wiper feature	0	0	S
Digital clock	0	0	S
Remote decklid release	0	0	S
Remote fuel filler door release	0	0	S
Power lock group: Includes door locks, fuel filler door and decklid	0	0	S
Power windows	0	0	S

ILLUMINATED ENTRY SYSTEM:

Activates interior lights when outside door handle is pulled	—	—	S
Light group: Includes engine compartment light, trunk light, overhead map light and headlamps-on chime	0	0	S

SOUND SYSTEMS

Electronic AM/FM stereo with four speakers (may delete for credit)	S	S	—
Electronic AM/FM stereo with cassette and four speakers	0	0	S
Premium Sound - Amplifier and premium speakers	0	0	0

INSTRUMENTATION

Analog instrumentation with speedometer, tachometer, engine coolant temperature gauge, fuel gauge and trip odometer	S	S	S
---	---	---	---

WHEELS AND TIRES

P185/70R14 black sidewall, all-season, steel-belted radial tires	S	—	—
P185/70R14 white sidewall, all-season, steel-belted radial tires	0	—	—

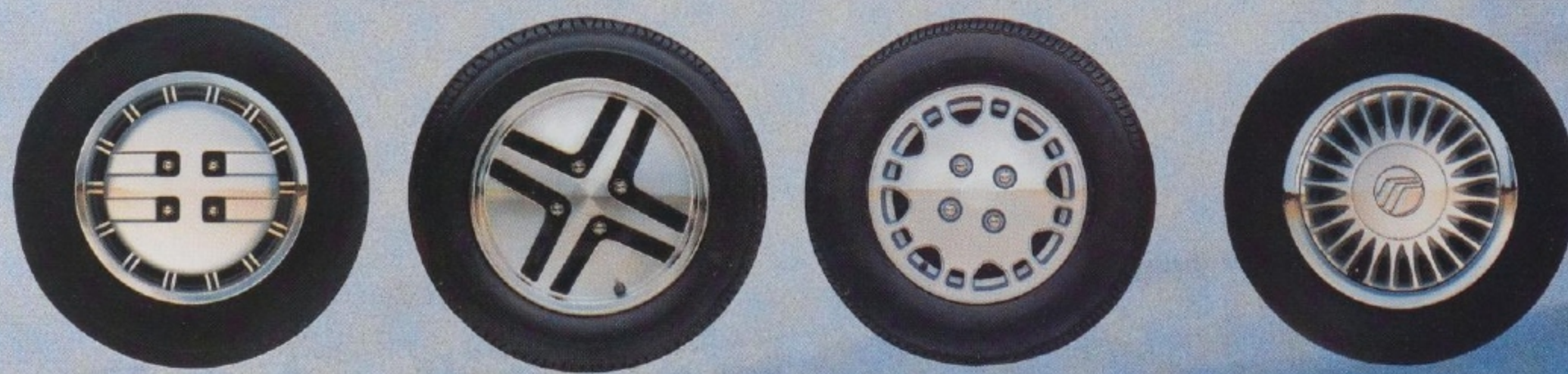
OPTIONAL PACKAGES

P185/70R14 black sidewall performance steel-belted radial tires	—	—	S
P185/70R14 white sidewall performance steel-belted radial tires	—	—	0
P185/65R365 black sidewall performance tires	—	S	—
Deluxe wheel covers	S	—	S
TR-type cast-aluminum wheels	—	S	—
Styled cast-aluminum wheels (late in model year)	—	S	—
Polycast wheels	0	—	0

COMFORT/CONVENIENCE PACKAGE

Includes tilt wheel, AM/FM stereo radio with cassette player, interval wipers, rear window defroster, digital clock, light group, locking fuel filler door with remote release and remote decklid release.

Left to right: Deluxe wheel covers, TR-type cast-aluminum wheels, styled cast-aluminum wheels (replaces TR-type late in model year) and polycast wheels.



PERHAPS THE ONLY THING EASIER THAN DRIVING A TOPAZ IS ORDERING THE ONE YOU WANT.

Over the years, Mercury buyers have tended to prefer certain combinations of optional equipment. So we've grouped them together in

the Preferred Equipment Packages listed below. And priced them to cost you less than if they were purchased separately.*

TOPAZ GS 2-door and 4-door	Preferred Equipment Package	
	361A	362A
Interval windshield wipers	•	•
Digital clock	•	•
Electric decklid and fuel filler door releases	•	•
Light group	•	•
Tilt steering wheel	•	•
AM/FM stereo radio with cassette tape player	•	•
All-wheel-drive group: Includes 2.3-liter HSO engine, 3-speed automatic transmission, all-wheel drive		•

*Specific content is subject to change throughout model year. Consult your dealer for the most up-to-date information.

TOPAZ GS SPORT 2-door and 4-door	Preferred Equipment Package	
	371A	372A
Interval windshield wipers	•	•
Digital clock	•	•
Electric decklid and fuel filler door releases	•	•
Light group	•	•
Tilt steering wheel	•	•
Electric rear window defroster	•	•
AM/FM stereo radio with cassette tape player	•	•
All-wheel-drive group: Includes 2.3-liter HSO engine, 3-speed automatic transmission, all-wheel drive, polycast wheels, P185/70R14 performance tires		•

TOPAZ LS 4-door

Topaz LS is the most luxuriously equipped model in the Topaz line and as such does not require Preferred Equipment Packages. All of the items listed with the GS and GS Sport Preferred Equipment Packages are standard equipment on the LS with the exception of all-wheel drive which is available as an option.

TOPAZ COLORS

Standard Exterior Colors

Black
Oxford White
Medium Scarlet
Spinnaker Blue
Midnight Regatta Blue
Sand Beige

Optional Clearcoat Colors

Silver Clearcoat Metallic
Smoke Clearcoat Metallic
Bright Red Clearcoat Metallic
Medium Shadow Blue Clearcoat Metallic
Driftwood Clearcoat Metallic
Aegean Clearcoat Metallic

Standard Interior Colors

Smoke
Regatta Blue (GS and LS Only)
Sand Beige
Scarlet

Optional Tu-Tone Colors

Black over Smoke Clearcoat Metallic
Oxford White over Smoke Clearcoat Metallic
Silver Clearcoat Metallic over Smoke Clearcoat Metallic
Driftwood Clearcoat Metallic over Smoke Clearcoat Metallic
Bright Red Clearcoat Metallic over Smoke Clearcoat Metallic
Medium Shadow Blue Clearcoat Metallic over Smoke Clearcoat Metallic

Customer satisfaction and product quality are top priorities at Lincoln-Mercury.

Customer satisfaction with Mercury cars may be attributed to the personalized attention given by the sales and service staffs at Lincoln-Mercury dealerships and to the Lincoln-Mercury Quality Commitment program. Its goal is to achieve outright industry leadership in customer satisfaction. We want Lincoln-Mercury customers to be the most pleased in the entire automotive industry.

An integral part of the Lincoln-Mercury Quality Commitment is the three-year Unlimited Mileage Warranty that covers major powertrain components on 1987 Mercury cars. The warranty is limited and certain deductibles apply. Ask your Lincoln-Mercury dealer for a copy of the warranty and take time to read it.

Motorcraft QUALITY PARTS

Genuine Ford and Motorcraft original equipment replacement parts are engineered and manufactured to Ford's high specifications. They're your best assurance of quality and long-term satisfaction because these replacement parts meet the same high standards as those installed in production.



The optional Ford Extended Service Plan covers certain selected components on new Mercury cars for longer than the

vehicle's basic warranty. The cost is so moderate for the protection offered that it could pay for itself the first time it is needed. Ask your Lincoln-Mercury dealer for complete details of the plan, which is available on cars sold and normally operated in the 50 United States and Canada.



Participating Lincoln-Mercury dealers are now offering the Lifetime Service Guarantee, which guarantees their work on your Mercury Topaz for as long as you own it. This means that you pay for a covered repair once and never again. If it ever has to be fixed again, the repairing dealer will fix it free. Free parts. Free labor. Ask your Lincoln-Mercury dealer for a copy of this limited warranty and take time to read it.

Ford-paid repair programs after the warranty period

Sometimes Ford Motor Company offers adjustment programs to pay all or part of the cost of certain repairs. These programs are intended to assist owners and are in addition to the warranty or to required recalls.

Technical Service Bulletins

All vehicles need repairs during their lifetime. Sometimes Ford issues Technical Service Bulletins (TSBs) and easy-to-read explanations describing unusual engine or transmission conditions which may lead to costly repairs, the recommended repairs and new repair proce-

dures. Often a repair now can prevent a more serious repair later.

Ask Ford Motor Company or your Lincoln-Mercury dealer about Ford-paid repair programs and TSBs relating to your Mercury Topaz.

To get copies of materials for your Topaz or the vehicle of interest to you: Call Ford toll-free at 1-800-241-3673.

In Alaska or Hawaii, call 1-800-243-3711.

In Georgia, call 1-800-282-0959 or write Ford at: Ford Customer Information System, Post Office Box 95427, Atlanta, GA 30347. Please include your name and address, year, make, model and vehicle identification number, as well as engine size.

EPA statement

1987 EPA mileage estimates were unavailable when this publication was printed. The 1987 Mercury Topaz, however, should post good mileage figures. Ask your Lincoln-Mercury dealer for the latest information.

Buckle up—together we can save lives.

Buy or lease your Topaz from your Lincoln-Mercury dealer.

Specifications and descriptions used were in effect when this publication was approved for printing.

Lincoln-Mercury Division reserves the right to discontinue options at any time or change specifications, equipment or designs without notice and without incurring obligation.


Standard and optional equipment listed is subject to change. Some features described are optional at extra cost. Some options are required in combination with other options.

Availability of some features may be subject to a slight delay.

TAKE THIS EASY-TO-ORDER FORM TO YOUR LINCOLN-MERCURY DEALER.





 **MERCURY.** *The shape you want to be in.*