



CITROËN C4



CITROËN  
RANGE  
TEST DRIVE



## YOUR INVITATION TO TEST DRIVE THE CITROËN OF YOUR CHOICE TODAY



**WHATEVER YOU'RE LOOKING FOR, WE'VE GOT THE MODEL.**

WHETHER IT'S A SUPERMINI, HATCHBACK, ESTATE, COUPÉ OR MPV, THERE'S A CITROËN DESIGNED FOR YOU. SO WHY NOT ACCEPT OUR NO-OBLIGATION TEST DRIVE INVITATION IN THE CITROËN OF YOUR CHOICE?

**WHAT'S MORE, IF YOU TAKE A TEST DRIVE WE'LL GIVE YOU £10 WORTH OF M&S VOUCHERS WITH OUR COMPLIMENTS.**

To arrange your test drive, click on the link below and enter your details. Your local dealer will contact you to arrange a convenient date and time for you to take your test drive. You will receive a coupon in the post that your dealer will validate following your test drive.

**> CLICK TO BOOK A CITROËN TEST DRIVE**

CITROËN  
C4  
ALIVE WITH  
TECHNOLOGY

# ALIVE WITH TECHNOLOGY, MOVING WITH STYLE. THE CITROËN C4 IS MORE ALIVE THAN EVER.

A SEDUCTIVE BALANCE OF ADVANCED TECHNOLOGY AND UNIQUE STYLE, THE CITROËN C4 FEATURES STRIKING NEW DESIGN ELEMENTS, SUCH AS THE RAISED BONNET PROFILE, REDESIGNED GRILLE AND BUMPER. THE MESSAGE IS CLEAR AT A GLANCE: THIS IS A DYNAMIC AND DESIRABLE CAR THAT'S PACKED WITH CITROËN INSPIRATION. LIFE JUST MOVED ON.

From that unmistakable 'arc of steel' protective roofline to those subtly curved sides and sensational rear lights, the Citroën C4 Hatchback redefines what a comfortable, space-efficient 5-door hatch can be. This is both soothing and razor sharp, safe and exhilarating.



› CONTENTS: 2 ALIVE WITH TECHNOLOGY 3 ELEGANT DESIGN 4 THE PERFECT LAYOUT 6 INTELLIGENT TECHNOLOGY  
7 DRIVING PLEASURE 8 ENVIRONMENTAL 9 SAFETY 10 RANGE OVERVIEW 13 OPTIONS 14 COLOUR, TRIM & WHEEL OPTIONS  
16 EQUIPMENT SPECIFICATION 18 TECHNICAL SPECIFICATION 20 ACCESSORIES 22 ENVIRONMENTAL COMMITMENT  
24 FINANCE 25 CARE & INSURANCE 26 GLOSSARY 27 DIMENSIONS

CITROËN  
C4  
ELEGANT DESIGN

**ELEGANCE WORKING BEAUTIFULLY.** THE CITROËN C4 DOESN'T LOOK LIKE AN ORDINARY CAR. AND ITS UNIQUE CHARMS ARE FAR FROM JUST AESTHETIC. THEY WORK, BEAUTIFULLY.

AT THE FRONT, YOUR EYE WILL BE DRAWN TO THE UNIQUE 'BOOMERANG' CURVE OF THE HEADLAMPS. BOLDLY DESIGNED AND INSTANTLY RECOGNISED, THEY SWEEP ELEGANTLY INTO THE FRONT WINGS. SMOOTHLY INTEGRATED INTO A NEW GRILLE DESIGN, THE CHROME DOUBLE CHEVRON LOGO HELPS TO CREATE A SHARP, DYNAMIC FRONT END.





**THE PERFECT LAYOUT.** EVERYTHING IS WHERE IT NEEDS TO BE, FOR SAFETY, FOR COMFORT, FOR SHEER ENJOYMENT. THE UNIQUE, INTELLIGENT SIMPLICITY OF THE INTERIOR LAYOUT MAKES THE CITROËN C4 A TRAVELLING ENVIRONMENT LIKE NO OTHER.

# CITROËN C4 THE PERFECT LAYOUT

## › BEYOND THE COMFORT ZONE

Every new Citroën cossets you with real long distance comfort. Driver's seats are height-adjustable and VTR+ and Exclusive models also include lumbar adjustment. The added indulgence of the optional Leather Pack brings tactile soft leather trim and the all-weather comfort of heated front sport seats.

## › THE NERVE CENTRE

Stylish and ever more practical, the distinctive centred translucent instrument display has been carefully thought out. All the vital driving information needed is included and clear to see at a glance. Especially as there is no sun reflection on the screen.

## › THE WHEEL REINVENTED

A Citroën C4 trademark, the steering wheel has a centre that remains fixed at all times. This means that all the important controls and lights positioned there remain quickly and easily accessible, all the time. It means that a driver's hands can stay on the wheel and eyes can stay on the road. Amongst the fingertip functions there are the cruise control and radio buttons. Also designed for class-defining safety, the fixed-centred controls steering wheel ensures that the driver's airbag always deploys at the optimum angle.



# INTELLIGENT TECHNOLOGY. IN THE CITROËN C4, INNOVATION IS HARNESSSED TO DELIVER AN EXTRAORDINARY CHOICE OF TECHNOLOGY. WELCOME TO THE CAR THAT THINKS OF ABSOLUTELY EVERYTHING.

## > AUTOMATICALLY DARK

Using light sensors, the Citroën C4's electrochromic rear view mirror on Exclusive models automatically darkens to prevent dazzle from following headlamps.

## > AUTOMATICALLY LIGHT

As night falls, deep shade covers the road or a tunnel appears, the Citroën C4's automatic headlamps activate to illuminate the way ahead on Exclusive models.



## > PERFECT SCENTS

The Citroën C4's fresh air system goes further. Carefully integrated into the dashboard vents, is a scented air freshener system that distributes a choice of soothing aromas around the cabin. Citroën C4 appeals to all the senses!

## > AIR AS YOU LIKE IT

The air conditioning standard on all models has an advanced filter and a recycling system which can be controlled from the centre console or the fixed-centred controls steering wheel. The automatic digital system on Exclusive models has dual-zone adjustment, so front passengers can choose their own temperature setting.

## > MYWAY

The MyWay colour satellite navigation system, standard on Exclusive models, includes Bluetooth® and live traffic information for maximum convenience. It also features a 7" 16/9 screen, and its SD card integrated European mapping brings you voice guidance and graphics in 2D or aerial perspective.



## > BLUETOOTH® SYSTEM WITH USB BOX

Combining two outstanding features in one clever option, the USB socket allows you to connect an MP3 player to play and browse its content using steering-mounted and dashboard radio controls. At the same time, the Bluetooth® system allows you to make safe hands-free calls, and browse through your phone's Contacts or Call Log.



## > STORE MORE

Intelligent use of interior space is a Citroën signature. The Citroën C4 proves the point with a spacious drawer under the front passenger's seat and a ventilated and illuminated glove box on all models.



# THE DYNAMICS OF PLEASURE. UNDENIABLY STYLISH AND ORIGINAL, PACKED WITH SAFETY AND COMFORT FEATURES, THE CITROËN C4 IS ALSO ALIVE WITH TECHNOLOGY THAT DELIVERS A THRILLING DRIVE.

CLIMB IN AND GET COMFORTABLE. FROM THE FIRST TURN OF THE WHEELS YOU'LL APPRECIATE LIGHT, ACCURATE STEERING THAT COMMUNICATES WITH YOU – SUPPLYING PLENTY OF FEEDBACK FROM THE ROAD BELOW. FROM THE FIRST CORNER YOU'LL SENSE A POISED CHASSIS THAT FLOWS WITH PRECISION AND GRIPS HARD, YET SACRIFICES NONE OF THE TRADEMARK CITROËN RIDE COMFORT, GLIDING OVER EVERY POTHOLE AND BUMP..

## › PERFECTLY POISED

Maintaining the Citroën C4's no-compromise balance between sharp handling and silky ride is a no-compromise suspension design. At the front are MacPherson struts and coil springs, while at the rear, independent trailing arms and torsion bars keep things perfectly composed.

## › HEARTS WITH MINDS

A well balanced front wheel drive car needs a great engine to exploit its potential. The Citroën C4 offers a choice of two petrol engines and two brilliant diesels, all bristling with the technology that provides flexible performance, economy and low emissions. Try the muscular 1.6HDi 16V 110hp diesel or the enterprising 1.6 16V VTi 120hp petrol engine to discover what we mean by the dynamics of pleasure.

## › SHIFTING PRIORITIES

A highly capable car needs a gearbox to match. In addition to the smooth, well-judged ratios of the 5-speed manual there is the best-of-both-worlds high technology of the Electronic Gearbox System (EGS). Essentially two transmissions in one, allowing fast, precise manual changes to be made using the steering column mounted paddles, or let the efficient and seamless automatic mode do the work.

## › CONFIDENCE INSPIRING

The Citroën C4 can be driven safe in the knowledge that its talents include advanced stopping power. With powerful discs all round, ventilated discs at the front, ABS, Emergency Braking Assistance (EBA) and Electronic Brakeforce Distribution (EBD), the Citroën C4 knows that excitement and safety are both part of a great dynamic balance. Electronic Stability Programme (ESP) also features on VTR+ and Exclusive models.





# THE ENVIRONMENTAL BENCHMARK. A TRULY ADVANCED CAR MUST TREAD SOFTLY WHEN IT COMES TO THE ENVIRONMENT. THE CITROËN C4 IS DESIGNED TO SET BENCHMARKS FOR LOW EMISSIONS AND FUEL EFFICIENCY.



## › AIMING LOW

The 1.6HDi 16V engine with 90hp or 110hp has incredibly low CO<sub>2</sub> outputs. The 110hp version with Diesel Particulate Filter System (DPFS) produces an extraordinary 115g/km when combined with the Electronic Gearbox System (EGS) on VTR+ and 120g/km CO<sub>2</sub> on Exclusive models. And remember it still delivers smooth, punchy performance and a combined fuel consumption figure of 64.2mpg on VTR+ and 62.8mpg on Exclusive models.

## › ANYTHING PARTICULAR

Available on most of the diesel range, the Diesel Particulate Filter System (DPFS) uses advanced anti-pollution technology to remove harmful carbon particles from the exhaust gases, before they reach the great outdoors. Smoky diesels are history.

## › EFFICIENCY ENGINEERED IN

All Citroën C4 engines make a more environmentally sound choice, from the ultra-low emissions diesels to refined, efficient petrol. Each engine has been carefully engineered to meet Euro IV emissions standards, providing maximum enjoyment and minimal waste. Even the powerful 1.6 16V 120hp petrol engine can return 54.3mpg on the extra urban cycle.

## › EGS MEANS LESS CO<sub>2</sub>

The revolutionary Electronic Gearbox System (EGS) is essentially two gearboxes in one, for rapid and responsive manual changes, or a seamless automatic. And it's even smarter still. Choose EGS and you will produce even less CO<sub>2</sub> than with a conventional manual!

## › ENERGY SAVER® TYRES

With a reduction in rolling resistance of 20%, Michelin's Energy Saver® tyres, fitted on 1.6HDi 90hp and 1.6HDi 110hp DPFS manual and EGS models, reduce the amount of energy needed to propel the car along the road which results in a reduction in fuel consumption. This is achieved with no loss of grip or stability, with shorter stopping distances in wet conditions. The tyre's innovative architecture generates fuel savings of nearly 0.2litres per 100km (in combined cycle), resulting in a reduction in CO<sub>2</sub> emissions of nearly 4g/km and around one tonne less CO<sub>2</sub> over the entire life of a Citroën C4.

# SAFETY TO THE POWER OF CITROËN C4. THE SHEER DEPTH OF SAFETY TECHNOLOGY THROUGHOUT THE CITROËN C4 MAKES IT A VERY WELL PROTECTED PLACE TO BE, FROM ITS TYRE PRESSURE MONITOR AND MULTIPLE AIRBAGS, TO ITS ELECTRONIC STABILITY PROGRAMME.

## > COME RAIN...

The rear wiper operates automatically when the reverse gear is engaged. Exclusive models benefit from rain-sensitive windscreen wipers that activate to clear your view at the first sign of a downpour. The automatically illuminating headlamps also turn on during a rain shower.



## > SLOW DOWN FAST AND BE SEEN

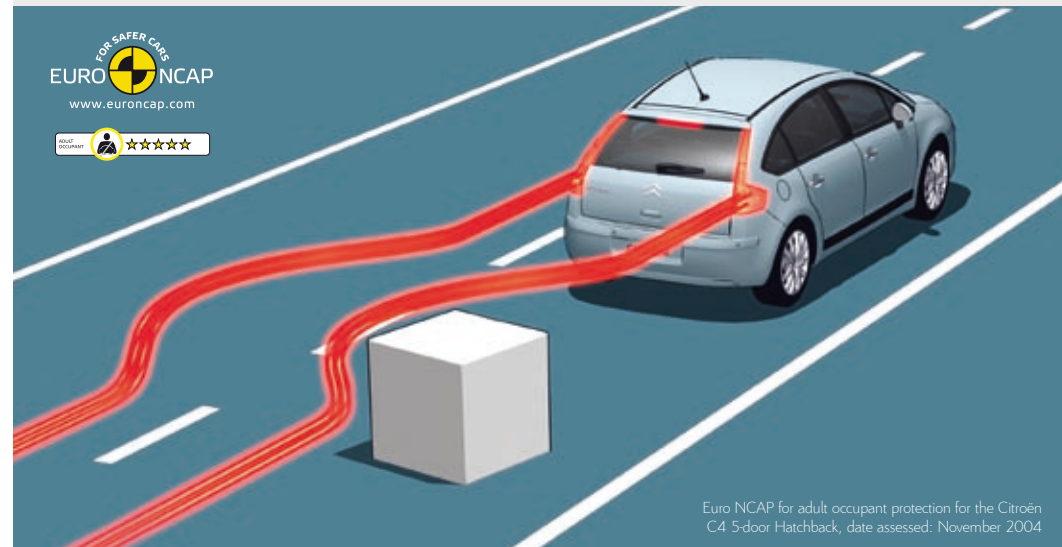
The hazard warning lights activate automatically in the event of rapid deceleration to warn other drivers. They switch off when the Citroën C4 accelerates away.

## > STABILITY = SAFETY

A Citroën is inherently stable and secure, thanks to its sophisticated suspension design, but the Electronic Stability Programme (ESP), standard on VTR+ and Exclusive models, adds another level of protection. By monitoring progress through a bend, it can sense if oversteer or understeer is developing, modify engine torque and apply one or more of the brakes to maintain stability and control.

## > MAXIMUM BRAKING

The standard Emergency Braking Assistance (EBA) automatically maximises brake effort when it detects strong braking input. This compensates for the fact that many of us don't brake with enough force in an emergency situation.



Euro NCAP for adult occupant protection for the Citroën C4 5-door Hatchback, date assessed: November 2004

## > TYRE PRESSURE MONITOR

Included with the optional Xenon Dual-Function Directional headlamps available on Exclusive models, the Citroën C4's tyre pressure monitor regularly checks each tyre and gives the driver a visual and audible warning if a problem is detected – it's a very reassuring safety feature.



## > AIRBAGS EVERYWHERE

The Citroën C4 features an army of airbags for maximum passenger protection. Front airbags are adaptive, so that they deploy with exactly the right power and speed for every kind of impact. Thanks to the innovative fixed-centred controls steering wheel, the driver is also protected by a torso-shaped airbag that always deploys at the optimal angle. Curtain airbags built into the roof protect the heads of front and rear passengers should a side impact occur, while lateral airbags integrated into the front seats also protect against side impacts, and move occupants towards the centre of the passenger cell, away from the force of the collision.

## EXPECT THE UNEXPECTED WITH THE CITROËN C4. AND EXPECT MORE.

THE CITROËN C4 VTR BRISTLES WITH ADVANCED FEATURES FOR YOUR COMFORT, ENJOYMENT AND SAFETY. IT TAKES REFINEMENT TO ANOTHER LEVEL, LETTING THE CORE CITROËN BALANCE OF DYNAMIC PROWESS AND PEERLESS RIDE COMFORT SHINE THROUGH. A CAR TO SUIT YOUR CHARACTER? WHATEVER NEXT!

> CITROËN C4 VTR SPECIFICATION INCLUDES:

- ABS with Electronic Brakeforce Distribution (EBD)
- Emergency Braking Assistance (EBA)
- Driver's, front passenger's, front lateral and curtain airbags
- High-frequency multi-function remote control central locking with deadlocks
- Front seat belts pre-tensioners with force-limiters
- Body colour painted front and rear bumper inserts
- Body colour painted door handles
- 16" 'Azzana' wheel covers (set of four)
- Fixed-centred controls steering wheel
- 'Guide-me-home' headlamp function
- Front fog lights
- Variable power assisted steering
- Cruise control with speed limiter
- Electrically adjustable door mirrors
- Front electric windows with 'one-touch' operation and anti-pinch
- Laminated windscreen
- Air conditioning
- Scented air freshener
- Multi-function on-board trip computer
- RDS stereo radio/MP3 compatible CD player

	CO <sub>2</sub> EMISSIONS (G/KM)
<b>PETROL ENGINE AVAILABILITY</b>	
1.4i 16V 90hp	153
1.6 16V VTi 120hp	159
<b>DIESEL ENGINE AVAILABILITY</b>	
1.6HDi 16V 90hp	115



# THE CITROËN C4 VTR+ MODELS ARE SUPERBLY EQUIPPED AND ENGINEERED TO INSPIRE YOU.

EVEN A BRIEF GLANCE AT THE SPECIFICATION BELOW WILL GIVE YOU AN IDEA OF WHAT THE '+' MEANS IN VTR+.

> CITROËN C4 VTR+ SPECIFICATION IN ADDITION TO VTR INCLUDES:

- 'Black panel' night-time instrument lighting
- Front sport seats with lumbar adjustment on driver's side
- Front armrest with storage
- Electronic Stability Programme (ESP) with traction control
- 16" 'Olympie' alloy wheels (set of four)
- Leather steering wheel
- Front fog lights with chrome inserts
- Rear electric windows with 'one-touch' operation and anti-pinch
- Cigarette lighter



	CO <sub>2</sub> EMISSIONS (G/KM)
<b>PETROL ENGINE AVAILABILITY</b>	
1.6 16V VTi 120hp	159
1.6 16V VTi 120hp Auto	165
<b>DIESEL ENGINE AVAILABILITY</b>	
1.6HDi 16V 90hp	115
1.6HDi 16V 110hp DPFS <sup>†</sup>	119
1.6HDi 16V 110hp DPFS <sup>†</sup> EGS <sup>††</sup>	115

<sup>†</sup> Diesel Particulate Filter System <sup>††</sup> Electronic Gearbox System

## LAUGH OUT LOUD PERFORMANCE? INDULGENT LUXURIES? EVERYTHING?

THE CITROËN C4 EXCLUSIVE DELIVERS YOUR HEART'S DESIRE, WHICH PROBABLY INCLUDES MYWAY COLOUR SATELLITE NAVIGATION, AUTOMATIC DIGITAL AIR CONDITIONING AND BLUETOOTH®. THESE MODELS LEAVE NOTHING OUT EXCEPT COMPROMISE. PREPARE FOR UNDILUTED, DYNAMIC ENJOYMENT.

› CITROËN C4 EXCLUSIVE SPECIFICATION IN ADDITION TO VTR+ INCLUDES:

- **MyWay** – colour satellite navigation, auxiliary socket, live traffic information, European mapping and Bluetooth® system
- Dark tinted tailgate window
- Anti-theft alarm
- Electrochrome rear view mirror
- 17" 'Volubilis' alloy wheels (set of four)
- Automatic digital air conditioning with dual-zone temperature setting
- Heat-reflecting acoustic windscreen
- Automatic rain-sensitive windscreen wipers and automatic illumination of headlamps

	CO <sub>2</sub> EMISSIONS (G/KM)
<b>PETROL ENGINE AVAILABILITY</b>	
1.6 16V VTi 120hp	159
<b>DIESEL ENGINE AVAILABILITY</b>	
1.6HDi 16V 110hp	128
1.6HDi 16V 110hp DPFS <sup>†</sup> EGS <sup>††</sup>	120

<sup>†</sup> Diesel Particulate Filter System <sup>††</sup> Electronic Gearbox System



# OPTIONS ARE ABOUT FREEDOM OF CHOICE. FREEDOM IS ABOUT GOING WHERE YOU WANT AND DOING AS YOU PLEASE. THE CITROËN C4 OPTIONS INVITE YOU TO DO SO IN STYLE AND IN SAFETY.

## › PARKING PACK

Parking your new Citroën C4 shouldn't add to the burden of a busy day. Front and rear parking sensors enable you to manoeuvre safely and quickly into the tightest spots, fully aware of hidden obstacles. Also part of the Parking Pack, electrically folding and heated door mirrors add practicality to your Citroën C4.



## › XENON DUAL-FUNCTION DIRECTIONAL HEADLAMPS

Citroën's intelligent Xenon Dual-Function Directional headlamps effectively allow you to see round corners. As you turn the steering wheel the directional beam turns with you highlighting the road and any potential hazards.



## › LEATHER PACK

For pure luxury, choose the tactile quality and comfort of the Leather Pack, trimmed in soft leather and featuring heated front sport seats.



OPTION SUMMARY	VTR	VTR+	EXCLUSIVE
<b>Parking Pack 1</b> – rear parking sensors and electrically foldable and heated door mirrors		○	
<b>Parking Pack 2</b> – front and rear parking sensors, electrically foldable and heated door mirrors and headlamp washer jets		○	○
Electronic Stability Programme (ESP) with traction control	○	●	●
Bluetooth® system with USB Box		○ <sup>1</sup>	
Panoramic fixed sunroof			○
<b>Leather Pack</b> – heated front sport seats, leather upholstery and electrically adjustable driver's seat with memory function		○	○
Xenon Dual-Function Directional headlamps with washer jets and tyre pressure monitor			○
Metallic/Pearlescent paint	○	○	○

● Standard equipment

○ Optional factory fitted equipment

<sup>1</sup> Mobile phone compatibility can vary by phone manufacturer. Please consult your Dealer for further compatibility information.

CITROËN  
**C4**  
COLOUR, TRIM &  
WHEEL OPTIONS

# YOUR OWN PERSONAL SPECTRUM. INSIDE AND OUT, THE CITROËN C4 CAN BE TAILORED TO SUIT YOU.

PORE OVER A RANGE OF STRIKING, CAREFULLY CONSIDERED COLOURS, FROM THE VIBRANT WICKED RED, TO THE SUBTLE METALLIC SHEEN OF ARCTIC STEEL. THEN GIVE SOME SERIOUS THOUGHT TO YOUR INTERIOR. ON VTR+ AND EXCLUSIVE MODELS YOU CAN GO FOR THE ULTIMATE LUXURY LEATHER PACK, WITH ITS SUPPLE HIDES AND HEATED FRONT SPORT SEATS.



Polar White



Black (pearlescent)



Wicked Red (pearlescent)



Bourrasque Blue (metallic)



Thorium Grey (metallic)



Arctic Steel (metallic)

Please note: Colours and pictures shown are for illustration purposes only. Please consult your Dealer for definitive colour and trim/upholstery details.



Standard on VTR models

Mistral 'Castelno' cloth



Standard on VTR+ and Exclusive models (sport style seats)

Mistral '3D X-Ray' cloth




Optional trim on VTR+ and Exclusive models

Mistral 'Claudia' leather


16" 'AZZANA' WHEEL COVERS  
Set of four  
Tyres: 205/55 R16  
16" steel spare wheel

VTR	VTR+	EXCLUSIVE
•		




16" 'OLYMPIE' ALLOY WHEELS  
Set of four  
Tyres: 205/55 R16  
16" steel spare wheel

VTR	VTR+	EXCLUSIVE
	•	



17" 'VOLUBILIS' ALLOY WHEELS  
Set of four  
Tyres: 205/50 R17  
16" steel spare wheel

VTR	VTR+	EXCLUSIVE
		•



• Standard equipment



# CITROËN

## C4

### EQUIPMENT SPECIFICATION

	VTR	VTR+	EXCLUSIVE
<b>SAFETY &amp; SECURITY</b>			
ABS with Electronic Brakeforce Distribution (EBD)	●	●	●
Emergency Braking Assistance (EBA)	●	●	●
Electronic Stability Programme (ESP) with traction control	○	●	●
Driver's airbag	●	●	●
Front passenger's airbag with cut-off device	●	●	●
Front lateral and curtain airbags	●	●	●
High-frequency multi-function plip (two) remote control central locking with deadlocks	●	●	●
Energy absorbing side impact protection	●	●	●
Front seat belt pre-tensioners with force-limiters	●	●	●
Height-adjustable front seat belts	●	●	●
Two outer rear seats Isofix child seat anchorage points	●	●	●
Child lock indicator	●	●	●
Transponder immobiliser	●	●	●
Automatic re-locking after 30 seconds (when using the plip – if doors and boot remain unopened)	●	●	●
Automatic activation of hazard warning lights (in case of rapid deceleration)	●	●	●
Automatic door and boot locking (when car in motion)	●	●	●
Warning lights and audible warning system for all 'unfastened' seat belts	●	●	●
Anti-theft alarm			●
<b>LIGHTING &amp; VISIBILITY</b>			
Halogen headlamps	●	●	●
Height-adjustable headlamps	●	●	●
'Guide-me-home' headlamp function	●	●	●
Front courtesy reading lights		●	●
Rear courtesy reading light	●	●	●
Boot courtesy light	●	●	●
Automatic rear wiper (when reverse gear is engaged)	●	●	●
Automatic illumination of interior lights when vehicle is unlocked or doors opened	●	●	●
Front fog lights	●		
Front fog lights with chrome inserts		●	●
Automatic rain-sensitive windscreen wipers and automatic illumination of headlamps			●
Electrochrome rear view mirror			●
<b>SEATING</b>			
Height-adjustable front head restraints	●	●	●
Rear retractable head restraints	●	●	●
Height-adjustable driver's seat	●	●	●
Rear 1/3-2/3 split/folding seats	●	●	●
Front sports seats with lumbar adjustment on driver's side		●	●
Front centre armrest		●	●

● Standard equipment

○ Optional factory fitted equipment

<sup>1</sup> Mobile phone compatibility can vary by phone manufacturer. Please consult your Dealer for further compatibility information.

	VTR	VTR+	EXCLUSIVE
<b>STYLE</b>			
<b>EXTERIOR</b>			
Tinted windows	●	●	●
Dark tinted tailgate window			●
Black side rubbing strips	●	●	●
Body colour painted front and rear bumper inserts	●	●	●
Body colour painted door mirror housings	●	●	●
Body colour painted door handles	●	●	●
16" 'Azzana' wheel covers (set of four)	●		
16" 'Olympie' alloy wheels (set of four)		●	
17" 'Volubilis' alloy wheels (set of four)			●
<b>INTERIOR</b>			
Multi-functional fixed-centred controls steering wheel	●	●	●
Leather steering wheel		●	●
<b>DRIVER INFORMATION</b>			
Rev counter	●	●	●
Lockable fuel cap	●	●	●
Multi-function on-board trip computer (current fuel consumption, average fuel consumption, distance covered, average speed and range on remaining fuel)	●	●	●
Maintenance indicator	●	●	●
Oil level indicator	●	●	●
Audible lights-on and key-in-ignition warning	●	●	●
Door and boot open warning light	●	●	●
Exterior temperature display	●	●	●
Steel spare wheel	●	●	●
Scented air freshener	●	●	●
'Black panel' night-time instrument lighting		●	●
<b>STORAGE</b>			
'Push/pull' drawer under lateral and central air vents	●	●	●
Front armrest with storage		●	●
Front and rear door pockets	●	●	●
Front seat back nets		●	●
Drawer under front passenger's seat	●	●	●
Storage compartments in boot	●	●	●
Ventilated and illuminated glove box	●	●	●

	VTR	VTR+	EXCLUSIVE
<b>COMFORT &amp; CONVENIENCE</b>			
Variable power assisted steering	•	•	•
Cruise control with speed limiter	•	•	•
Height and reach adjustable steering wheel	•	•	•
Electrically adjustable door mirrors	•	•	•
Front electric windows with 'one-touch' operation and anti-pinch	•	•	•
Rear electric windows with 'one-touch' operation and anti-pinch	•	•	•
Air conditioning	•	•	•
Automatic digital air conditioning with dual-zone temperature setting			•
Child locks for rear windows situated on driver's door keypad		•	•
Driver's and front passenger's sunvisor with covered courtesy mirror and map holder	•	•	•
12 volt socket	•	•	•
Cigarette lighter		•	•
Laminated windscreen	•	•	•
Heat-reflecting acoustic windscreen			•
<b>IN-CAR ENTERTAINMENT</b>			
RDS stereo radio/MP3 compatible CD player	•	•	•
<b>MyWay</b> – colour satellite navigation, auxiliary socket, live traffic information, European mapping and Bluetooth® system			•†



# CITROËN C4 TECHNICAL SPECIFICATION



**EGS**  
6-speed available on  
1.6HDi 16V 110hp models



Up to 320 litres  
of loadspace  
in all models

	PETROL MODELS		
	1.4i 16V 90hp	1.6i 16V VTi 120hp <sup>▲</sup>	1.6i 16V VTi 120hp Auto <sup>▲</sup>
<b>ENGINE</b>			
Capacity (cc)	1360	1598	1598
Cylinders	4 in line	4 in line	4 in line
Bore and stroke (mm)	75.0 x 77.0	77.0 x 85.8	77.0 x 85.8
Max power CEE (kW/rpm)	65/5250	88/6000	88/6000
Max torque CEE (Nm/rpm)	133/3250	160/4250	160/4250
Fuel system		Multi-point electronic fuel injection	
Euro status	Euro IV	Euro IV	Euro IV
<b>TRANSMISSION</b>			
Five speed manual	•	•	
Four speed sequential auto-adaptive automatic Electronic Gearbox System (EGS)			•
Clutch type	Dry single plate	Dry single plate	N/A
<small>(All figures driver alone)</small> <b>PERFORMANCE</b>			
Max speed (mph)	113	121	116
0-62mph (secs)	12.8	10.0	11.9
Standing 1000m (secs)	34.5	31.4	33.6
<small>(Official Government test fuel consumption figures)</small> <b>ECONOMY Litres/100km (mpg)</b>			
Urban cycle	8.7 (32.5)	9.3 (30.4)	9.9 (28.5)
Extra urban	5.2 (54.3)	5.2 (54.3)	5.4 (52.3)
Combined	6.4 (44.1)	6.7 (42.2)	7.0 (40.4)
<b>CO<sub>2</sub> EMISSIONS (g/km)</b>			
	153	159	165
<small>Please note: the maximum plated weights must not be exceeded</small> <b>WEIGHTS (kg)</b>			
Kerb weight	1182	1220	1273
Max laden weight	1702	1731	1761
Max towing weight braked	1495	1545	1515
Max towing weight unbraked	628	645	670
Max tow hitch download	63	65	65
Max roof rack load	75	75	75
<b>BRAKES</b>			
ABS with EBD and EBA standard on all models. Front ventilated discs, rear discs.			
<b>STEERING</b>			
Variable power assisted steering			
Number of turns lock to lock	2.88		
Turning circle between kerbs (m)	10.70		
<b>SUSPENSION</b>			
Anti-roll bars front and rear. Front: MacPherson strut/coil springs. Rear: independent trailing arms/torsion bars			
<b>FUEL TANK CAPACITY Litres (gallons)</b>		60 (13)	
<b>EXTERIOR DIMENSIONS (mm)</b>			
Length	4275		
Width	1773		
Height	1458		
Wheelbase	2608		
<b>BOOT VOLUMES &amp; DIMENSIONS</b>			
Seat up – below parcel shelf (litres VDA)	320		
Max access width (mm)	1034		
Max access height (mm)	791		

† Diesel Particulate Filter System

†† Electronic Gearbox System

▲ Variable Valve Lift and Timing Injection

**DIESEL MODELS**

1.6HDi 16V 90hp	1.6HDi 16V 110hp	1.6HDi 16V 110hp DPFS <sup>†</sup>	1.6HDi 16V 110hp DPFS <sup>†</sup> EGS <sup>††</sup> VTR <sup>+</sup>	1.6HDi 16V 110hp DPFS <sup>†</sup> EGS <sup>††</sup> Exclusive
1560 4 in line 75.0 x 88.3 66/4000 215/1750	1560 4 in line 75.0 x 88.3 80/4000 240/1750	1560 4 in line 75.0 x 88.3 80/4000 240/1750 High pressure direct diesel injection	1560 4 in line 75.0 x 88.3 80/4000 240/1750	1560 4 in line 75.0 x 88.3 80/4000 240/1750
Euro IV	Euro IV	Euro IV	Euro IV	Euro IV
•	•	•	•	•
Dry single plate	Dry single plate	Dry single plate	Dry single plate	Dry single plate
112 12.5 34.1	119 11.2 32.6	119 11.2 32.6	119 11.2 32.6	119 11.2 32.6
5.6 (50.4) 3.7 (76.3) 4.4 (64.2)	6.1 (46.3) 4.0 (70.6) 4.8 (58.8)	5.8 (48.7) 3.8 (74.3) 4.5 (62.8)	5.8 (48.7) 3.6 (78.5) 4.4 (64.2)	5.8 (48.7) 3.8 (74.3) 4.5 (62.8)
115	128	119	115	120
1257 1777 1565 666 66 75	1270 1800 1570 672 66 75	1280 1800 1560 677 66 75	1293 1800 1540 675 65 75	1293 1800 1540 675 65 75
ABS with EBD and EBA standard on all models. Front ventilated discs, rear discs.				
Variable power assisted steering				
2.88 10.70				
Anti-roll bars front and rear. Front: MacPherson strut/coil springs. Rear: independent trailing arms/torsion bars				
60 (13)				
4275 1773 1458 2608				
320 1034 791				



**64.2mpg**  
on 1.6HDi 16V 110hp  
DPFS<sup>†</sup> EGS<sup>††</sup> VTR<sup>+</sup>  
& 1.6HDi 16V 90hp models



**115g/km CO<sub>2</sub>**  
on 1.6HDi 16V 110hp  
DPFS<sup>†</sup> EGS<sup>††</sup> VTR<sup>+</sup>  
& 1.6HDi 16V 90hp models

**MAKING THE TECHNICAL PERSONAL.** ACCESSORIES ARE ALL ABOUT ADDING YOUR PERSONALITY TO THE MIX, WHETHER THAT MEANS CHILD SAFETY FEATURES, ENTERTAINMENT OR COMMUNICATION TECHNOLOGY. THE END RESULT WILL BE A CAR THAT FAITHFULLY REFLECTS YOUR NEEDS.

Visit [www.accessories.citroen.co.uk](http://www.accessories.citroen.co.uk) to view the full range of Citroën C4 accessories.

› 'SURFING' CARPET SET

A range of stylish mats and carpet sets are available to protect your new Citroën C4 from wear and tear.



› ALLOY WHEELS

Along with the 15" 'Cronos' alloy wheels (right), Citroën offer an additional range of 15", 16" and 17" alloy wheels.





> MUDFLAPS

Contoured front and rear mudflaps are available on all C4 models.



> MP3 ADAPTOR

Enjoy music from your own MP3 player and control your song selection through the dashboard stereo thanks to this clever little MP3 adaptor.

MP3 player not included.



> STORAGE

Expand the capabilities of your new Citroën C4 with various storage accessories including cargo nets and foldaway boot storage compartments. Check the web site for other clever storage solutions.



> ROOF BARS, ROOF BOXES, SKI & SNOWBOARD CARRIERS AND BICYCLE CARRIERS

Citroën traversing roofbars (A) are designed to match the contours of your new Citroën C4 and can be used with Citroën bicycle carriers, ski/snowboard carriers and roof boxes for quick and easy transport and storage solutions.

Citroën roof boxes (B+C) are available in 280, 340, 370 or 430 litre capacities.

Citroën Ski and Snowboard Carriers (D) are also available. Quick to install and lockable to protect against theft, they enable you to carry up to 6 pairs of skis.

Citroën bicycle carriers (E) are a secure and hassle-free way of transporting your bike. Please contact your local Dealer for information about additional fixings that may be required.



> TOWBARS

Citroën towbars have been developed to ensure the highest standards of safety and strength. Conventional and fixed swan neck towbars are available along with demountable towballs.



# CITROËN ENVIRONMENTAL COMMITMENT



## › INTRODUCING A MORE ECOLOGICAL CAR

The Citroën C-Cactus concept, a car designed on ecological principles. It includes a significant proportion of recycled or recyclable materials and, like the plant it is named after, it is low on liquid consumption. At the same time, Citroën C-Cactus is designed to be no more expensive than a mid-range family car. This can be attributed to the use of new materials and to a rational design process using a smaller number of parts. Citroën C-Cactus is an essential vehicle reflecting a new vision of the car, many of its thoughts and themes will appear in modern Citroën vehicles to come.

## › AIRDREAM – A BENCHMARK

When it comes to the environment we wanted to show our genuine commitment as well as our profound expertise, so we have devised a benchmarking scheme with the signature 'Airdream' reserved exclusively for the cleanest vehicles in our range. To qualify for the Airdream signature, vehicles must meet three standards:

1. a) CO<sub>2</sub> emissions of 120g/km or less
2. b) fitted with DPFS with CO<sub>2</sub> below 158g/km.
3. 95% of recoverable materials.

# GREEN EFFICIENCY. CITROËN HAS BEEN PIONEERING CLEANER, MORE FUEL-EFFICIENT MOTORING, SUCH AS THE COMMON RAIL HDi ENGINES NOW FITTED IN ALL NEW CITROËN DIESELS, LONG BEFORE ALL THE HYPE...

CITROËN HAS ALWAYS BEEN AT THE FOREFRONT OF GREENER TECHNOLOGY AND THE CITROËN C4 IS NO EXCEPTION. TODAY, WE HAVE ONE OF THE UK'S WIDEST RANGES OF LOW EMISSION VEHICLES – THREE OF WHICH ARE IN THE TOP FOUR FOR LOW CO<sub>2</sub> AND FUEL-EFFICIENCY. WE ALSO PRODUCE ONE OF THE UK'S MOST ECONOMICAL LIGHT COMMERCIAL VEHICLES, THE CITROËN NEMO VAN.

On the technology side, we've been equipping more of our vehicles with more environmentally friendly breakthroughs, such as our Electronic Gearbox System (EGS), which boasts impressively greener credentials, with less pollution and up to 5% more economy than a conventional manual gearbox system. In addition,

Citroën has expanded the use of the exceptionally efficient, self-regenerating Diesel Particulate Filter System (DPFS) in our models.

Cleaner, greener driving without taking away from the drive – that's what you can continue to expect from the Citroën C4.



All Citroën vehicles are designed to be 85% recyclable.

Citroën was a winner at the 2009 WhatCar? Green Awards. Citroën Grand C4 Picasso 1.6HDi SX won Best MPV.



# DRIVE YOUR WAY. GET BEHIND THE WHEEL OF YOUR NEW CITROËN C4, WITH CITROËN'S RANGE OF FINANCE AND INSURANCE PRODUCTS.

## CITROËN FINANCIAL SERVICES PURCHASE PLAN

Own your vehicle with this flexible package designed to fit your budget.

## CITROËN FINANCIAL SERVICES ELECT 3

A new Citroën car every two or three years with monthly payments structured to suit your budget.

## CITROËN FINANCIAL SERVICES ELECT 4

Enjoy the convenience of a new car without the stress and hassle of ownership.

› TO FIND OUT MORE ABOUT CITROËN PRODUCTS AND SERVICES, GO TO [WWW.CITROEN.CO.UK](http://WWW.CITROEN.CO.UK) OR CONTACT YOUR CITROËN DEALER.

## FOR BUSINESS USERS

### CITROËN CONTRACT MOTORING HIRE PURCHASE

A tried and tested finance package that allows you to own your vehicle.

### CITROËN CONTRACT MOTORING BUSINESS LEASE

An alternative to vehicle ownership that allows you to control your business cash flow and gain tax efficiencies.

### CITROËN CONTRACT MOTORING LEASE PURCHASE

Own a vehicle with a finance solution that offers ultimate flexibility to complement your business cash flow.

### CITROËN CONTRACT MOTORING CONTRACT HIRE

A non-ownership finance solution that keeps costs fixed and risks low.

› FOR MORE INFORMATION ON CITROËN FLEET AND BUSINESS SALES, PLEASE CALL CITROËN FLEET CONNECT ON 08457 940 940 OR LOOK US UP AT [WWW.CITROEN.CO.UK/FLEET](http://WWW.CITROEN.CO.UK/FLEET)

## > ESSENTIAL CARE. CITROËNS ARE RENOWNED FOR THEIR RELIABILITY – AND THE CITROËN C4 IS NO EXCEPTION.

WITH THE ADDED REASSURANCE OF A WARRANTY, ROUTINE SERVICING AND MAINTENANCE, AS WELL AS 24-HOUR ROADSIDE ASSISTANCE, YOU ARE PROTECTED.

### CITROËN WARRANTY

Every new Citroën car has the benefit of a 3 year\* warranty package, plus a 12 year anti-perforation\*\* warranty and a 3 year paint warranty.

\* 2 years' unlimited warranty. No-fee customer option of 1 year's Dealer provided extended warranty, only on cars sourced from Citroën UK Limited. Note: Dealer provided warranty is limited to 60,000 miles for cars.  
\*\* Against all internal to external perforation to bodywork or underbody.

### CITROËN ASSISTANCE

For all models except Citroën C6: In response to a free telephone call in the UK, Citroën Assistance brings rapid expert roadside assistance to you in an emergency. It comes free of charge for a full year and operates 24 hours a day in all parts of the UK and Europe. Services include nationwide recovery for both car and passengers, a home call service, replacement vehicle, hotel accommodation and vehicle storage if required. Please note, Citroën Assistance only applies to incidents covered by the new vehicle warranty, and excludes non-vehicle faults, such as running out of fuel, mis-fuelling, loss of keys, lock-ins, road traffic accidents and punctures/wheel changes. Citroën C6: Citroën Assistance covers all incidents and for a period of 3 years.

Full details are available on request from Citroën UK via [cuk\\_contactcentre@citroen.com](mailto:cuk_contactcentre@citroen.com)

### CITROËN MAINTENANCE

From roadside assistance to replacing wear and tear parts or regular servicing, with Citroën Maintenance you have total peace of mind. For a one-off fee or low monthly payment, our experienced engineers will take care of your Citroën, whatever happens.

To find out more, contact your Citroën Dealer or Citroën Authorised Repairer.

### CITROËN SERVICING

Available up to 1 year from your vehicle's registration date, but before its first chargeable service, a Citroën Servicing Package enables you to pay in advance for your vehicle's servicing needs for 3 years/35,000 miles.

For further information, please contact your Citroën Dealer.

### CITROËN EXTENDED WARRANTY

With a Citroën Extended Warranty, we offer you the opportunity to continue your care-free motoring for a further 1 or 2 years beyond the 3 year warranty and up to 120,000 miles.

To find out more, contact your Citroën Dealer or call the Customer Contact Centre on 0844 463 3500.

Extended Warranty insurance is underwritten by Pinnacle Insurance Plc which is authorised and regulated by the Financial Services Authority.

## CITROËN INSURANCE

### CITROËN INSURANCE INSTANT COVER

To help you drive away your new car without delay, we offer Instant Cover insurance, providing you with 7 days comprehensive car insurance, for free!

### CITROËN INSURANCE MOTOR INSURANCE

Citroën Insurance has been designed specifically for our vehicles. You don't just get repairs you get Citroën expertise, service, quality and parts. So, when the time comes to renew your insurance cover, call Citroën Insurance on 0870 024 2725.

Lines open 8am - 8pm weekdays, 9am - 5pm Saturdays. Max call charge from a BT landline is 8p per minute. Calls from other networks may vary. Alternatively, visit [www.citroen.co.uk](http://www.citroen.co.uk) for more information or to apply online.

### CITROËN INSURANCE FOR BUSINESS

If you are a business user (Self employed, sole trader, partnership, Limited company) you may want to consider a Citroën Insurance **for Business** policy. Simply call 0845 301 5975.

Lines open 9am - 5pm weekdays only.

Citroën Insurance is underwritten by UK Insurance Ltd. UK Insurance Limited is authorised and regulated by the Financial Services Authority. Citroën Insurance is a trading style of Banque PSA Finance UK which is authorised by the "Organisme pour le Registre des Intermédiaires en Assurance" (ORIAS) in France under number 07 008 501 and regulated by the French regulatory authority, the "Autorité de Contrôle des Assurances et des Mutuelles" (ACAM) and subject to limited regulation by the Financial Services Authority in respect of some aspects of the conduct of UK Insurance mediation business. Details on the extent of our regulation by the Financial Services Authority are available from Banque PSA Finance UK on request.

## › FIXED-CENTRED CONTROLS STEERING WHEEL

A Citroën innovation that makes for safer driving in every way. Whilst the rim of the steering wheel turns normally, the centre hub remains static which means that all the audio, information and driving controls operated from here stay in exactly the same place. It also means that the driver's airbag can be specially sculpted to deploy more favourably than the round ones necessary in cars with conventional steering wheels.

## › MYWAY

MyWay colour satellite navigation is completely integrated into the vehicle which avoids the risk of theft. The design has been created for ease of use and with steering wheel controls, navigating from your phone to the satellite navigation couldn't be any easier.

MyWay allows you to define routes, stops and places of interest with the added benefit of vocal instruction. MyWay also provides live traffic updates of any congestion spots or delays.

A GPS integrated aerial is built into the vehicle, to maximise the reception of satellite information; therefore permitting an accurate location of the car.

## › BLUETOOTH® SYSTEM WITH USB BOX

Integrated Bluetooth® hands-free phone function with dashboard-integrated USB socket and jack to plug in a portable MP3 player. Menu navigation and music selection via steering-mounted and dashboard radio controls, with song titles displayed on the radio screen.

## › XENON DUAL-FUNCTION DIRECTIONAL HEADLAMPS WITH CORNERING LIGHTS

A dynamic AFS with lamps that respond to the steering, adjusting the direction of the beam in the direction of the turn by up to 15 degrees. These headlamps contain a directional twin xenon elliptical module for use in the dipped and full-beam positions, and a complex surface "long-range" halogen unit for full-beam only. This combined assembly delivers an extremely high level of forward visibility.

## › HIGH-PRESSURE DIRECT INJECTION DIESEL ENGINE

Our HDi diesel engines operate with the fuel under extremely high pressure, enabling microscopically precise injection control. With this level of management it's possible to inject at different times during the same engine stroke allowing total control over the combustion process. This has allowed our engineers to reduce carbon monoxide emissions by 40%, unburned hydrocarbons by 50% and engine particulates by 60%. Fuel consumption is 20% lower than a prechamber diesel engine, resulting in an equivalent reduction in CO<sub>2</sub> emissions and thanks to the torque available at low engine speed it could be argued that driveability is now better than in petrol engined cars.

## › DIESEL PARTICULATE FILTER SYSTEM (DPFS)

Our unique DPFS collects exhaust particulates (soot) that would have been bound for the air around us and burns them off at 550 degrees C. This means that 'black smoke' is eliminated completely. And because the filter is constantly burning the particulates it is self-cleaning and requires no maintenance.

## › ANTI-LOCK BRAKING SYSTEM (ABS)

Computer-controlled braking assistance designed to prevent the wheels from locking under extreme braking. This enables the car to continue being steered and therefore controlled during this braking incident. Citroën C4's ABS system is further enhanced with EBA and EBD (see below).

## › ELECTRONIC BRAKEFORCE DISTRIBUTION (EBD)

A conventional ABS system cannot account for any of the four wheels wanting to lock more quickly than the others (for example, two of the wheels may be on snow and two on tarmac). EBD reads the deceleration rate of each wheel individually and applies the ABS principles accordingly.

## › EMERGENCY BRAKING ASSISTANCE (EBA)

As drivers we find it difficult to instinctively brake very hard, but this is often what is needed in those rare emergency situations. The EBA system recognises our 'attempt' to brake hard and in combination with the ABS and EBD systems instantly applies the maximum stopping power possible.

## › ELECTRONIC STABILITY PROGRAMME (ESP)

This is computer-controlled traction assistance and is provided primarily through the braking systems. The ESP's control unit constantly compares where the driver intends going (through the position of the steering wheel) with where the vehicle is actually going and, if necessary, makes speed corrections to each wheel individually through braking or engine torque to keep the vehicle 'in line'.

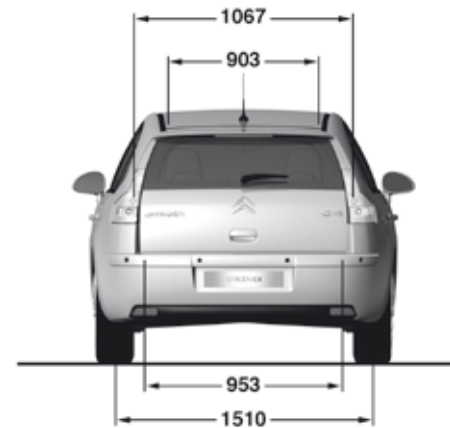
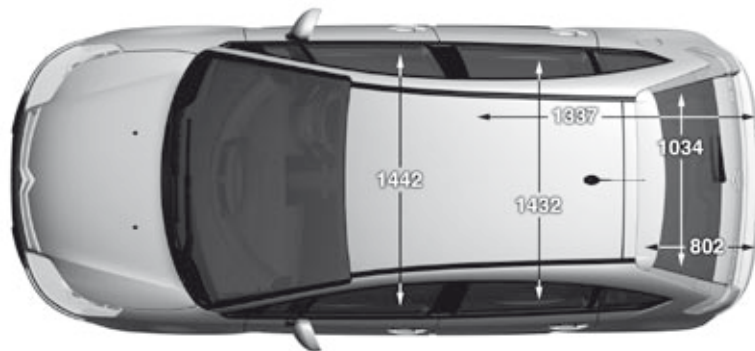
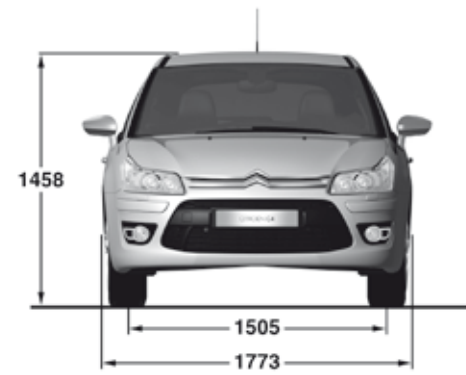
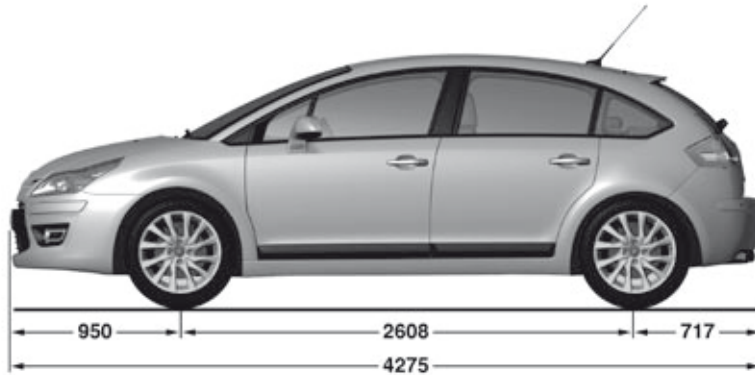
## › ELECTRONIC GEARBOX SYSTEM (EGS)

A revolutionary alternative to conventional gearboxes, Citroën's innovative EGS allows you to operate in either 'manual' or 'automatic' modes. 'Manual' gear shifts are made using the paddles by the steering wheel, or the sequential lever. In 'automatic' mode the gearbox will control gear changes for you, maximising your drive comfort and optimising fuel consumption – to the order of 3 to 5% lower than a conventional manual gearbox, also helped by a sixth gear.

## › ISOFIX

A standardised and more simple method for installing child seats, each seat is 'clicked' into place via a three point system. On Citroën C4, Isofix is installed on the two outer rear seats.

# CITROËN C4 DIMENSIONS



All measurements are in millimetres.



This brochure is made from paper from a well-managed forest. Citroën support responsible use of forest resources.

Please don't throw me away, give me to a friend or recycle me.

NOTE: Every endeavour has been made to ensure that the information and details contained in this brochure were accurate at the time of going to press January 2010. However the company reserves the right, whilst preserving the essential characteristics of the models described, to introduce at any time modifications, changes of details, equipment or accessories. Every effort will be made to bring this brochure up to date, but in order to avoid any misunderstandings please consult your Dealer. For full details of Citroën Care for Car and Driver, please see the full manufacturer's price list. The Citroën Website contains full information on all Citroën products and offers available in the UK, together with details of our environmental and recycling policies. The site address is: [www.citroen.co.uk](http://www.citroen.co.uk) or you can contact Citroën directly via [cuk\\_contactcentre@citroen.com](mailto:cuk_contactcentre@citroen.com)

**CITROËN prefers TOTAL**

CITROËN UK Ltd. 221 Bath Road, Slough SL1 4BA.  
[www.citroen.co.uk](http://www.citroen.co.uk)

CRÉATIVE TECHNOLOGIE

