



CITROËN DISPATCH

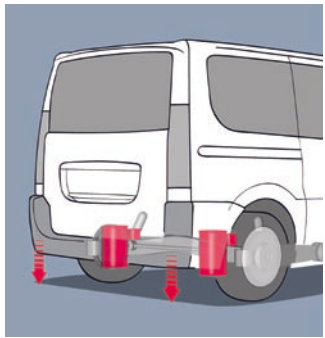


CITROËN  
DISPATCH  
ABOVE STANDARD  
ISSUE



**ABOVE STANDARD ISSUE.** WHEN OUR DESIGNERS SAT DOWN TO REDRAW THE CITROËN DISPATCH RANGE WE MADE SURE THEY TICKED EVERY BOX.

IT LOOKS GREAT TOO! DYNAMIC STYLING WITH ROBUST PROTECTION. AND INSIDE? ERGONOMICS, SUPERIOR COMFORT AND SOUNDPROOFING ENOUGH TO MAKE EVEN THE MOST CRITICAL CREW MEMBER HAPPY.



#### › OPTIMAL COMFORT

The ergonomic design of the driver's seat guarantees excellent body posture and offers maximum comfort even during long periods of driving. To find the most comfortable driving position, the seat back is adjustable, while the seat cushion can be adjusted for length and height.

#### › ENJOYABLE CONSISTENT RIDE

The adjustable pneumatic rear suspension, optional on diesel Panel Vans and Combi models, guarantees optimal road holding and a constant ride height under all load conditions. This system also maintains a constant overall height of less than 1.90m, i.e. below the standard minimum limit for entrances to underground car parks. Lastly, the manual control for adjustment of the load sill offers incomparable convenience by allowing a reduction of the rear sill height to 49cm; the ride height returns to normal automatically as soon as the speed reaches 6mph.

	PANEL VAN		COMBI		PLATFORM CAB
	VAN	XTR+	COMBI	SX	
<b>ENGINE AVAILABILITY</b>					
1000 L1H1 1.6HDi 90hp	•				
1000 L1H1 2.0HDi 120hp	•				
1000 L1H1 2.0i 16V 140hp	•				
1200 L1H1 1.6HDi 90hp	•				
1200 L1H1 2.0HDi 120hp	•	•			
1200 L2 2.0HDi 120hp					•
1200 L2H1 1.6HDi 90hp	•				
1200 L2H1 2.0HDi 120hp	•				
1200 L2H2 1.6HDi 90hp	•				
1200 L2H2 2.0HDi 120hp	•				
6 Seat L1H1 1.6HDi 90hp			•		
6 Seat L2H1 2.0HDi 120hp			•		
9 Seat L1H1 2.0HDi 120hp			•	•	
9 Seat L2H1 2.0HDi 120hp			•	•	
9 Seat L2H1 2.0HDi 136hp DPFS <sup>1</sup>			•	•	

<sup>1</sup> Diesel Particulate Filter System.

TAKE SOME TIME TO CHECK OUT HOW EASY IT IS TO PUT TOGETHER YOUR PERFECT CITROËN DISPATCH. ENJOY!



Polar White



Imperial Blue



Black



Passion Red<sup>1</sup>



Pacific Blue<sup>1</sup>



Iron Grey (pearlescent)



Arctic Steel (metallic)



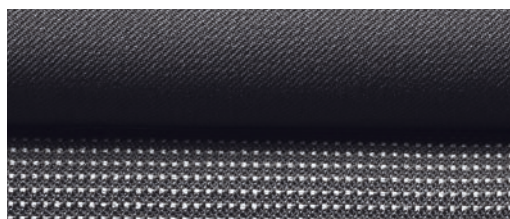
Golden White (metallic)<sup>2</sup>



Kyanos Blue (metallic)<sup>2</sup>

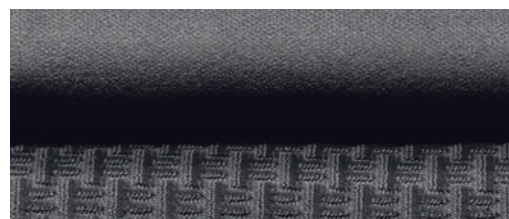


Gunmetal (metallic)<sup>2</sup>



Panel Vans, Combi & Platform Cab

'Transcodage' cloth



Combi SX

'Jocaste' velour

Please note: Colours and pictures shown are for illustration purposes only. Please consult your Dealer for definitive colour and trim/upholstery details.

<sup>1</sup> Not available on Combi and Combi SX models.

<sup>2</sup> Available on Combi and Combi SX models only.

15" STEEL WHEELS  
Set of four  
Tyres: 215/65 R15

PANEL VAN	PANEL VAN XTR+	COMBI	COMBI SX	PLATFORM CAB
• <sup>1</sup>				



16" STEEL WHEELS  
Set of four  
Tyres: 215/60 R16

PANEL VAN	PANEL VAN XTR+	COMBI	COMBI SX	PLATFORM CAB
• <sup>2</sup>	• <sup>3</sup>	•		•



16" 'NARCISSE'  
WHEEL COVERS  
Set of four  
Tyres: 215/60 R16

PANEL VAN	PANEL VAN XTR+	COMBI	COMBI SX	PLATFORM CAB
		○ <sup>4</sup>	•	



16" 'VIVACE'  
ALLOY WHEELS  
Set of four  
Tyres: 215/60 R16

PANEL VAN	PANEL VAN XTR+	COMBI	COMBI SX	PLATFORM CAB
			○	



OPTION SUMMARY	PANEL VAN		COMBI		PLATFORM CAB
	VAN	XTR+	COMBI	SX	
Cruise control with driver adjustable speed limiter	○	○	○	○	○
Electronic Stability Programme (ESP) with traction control and cruise control with driver adjustable speed limiter	○ <sup>5</sup>	○	○	○	○
Front passenger's airbag	○	○	○	•	○
Passenger, side & curtain airbags with single passenger seat, lumbar support & armrest			○	○	
Rear parking sensors	○ <sup>6</sup>	○ <sup>6</sup>	○ <sup>6</sup>	○ <sup>6</sup>	
Anti-theft alarm	○	○	○	○	○
RDS stereo radio/MP3 compatible CD player with 5-CD autochanger	○	○	○	○	○
Bluetooth® system with USB Box	○ <sup>7</sup>	○ <sup>7</sup>	○ <sup>7</sup>	○ <sup>7</sup>	○ <sup>7</sup>
MyWay – colour satellite navigation, auxiliary socket, live traffic information, European mapping and Bluetooth® system				○ <sup>7</sup>	
MyWay and Visibility Pack			○ <sup>7</sup>		
Visibility Pack – automatic illumination of headlamps, automatic rain-sensitive windscreen wipers and front fog lights	○	○	○	•	○
Electrically adjustable and heated twin lens door mirrors	• <sup>8</sup>	○	○	•	○
Air conditioning with electrically adjustable and heated twin lens door mirrors	• <sup>8</sup>	○	○	•	○
Automatic air conditioning				○	
Rear air conditioning (Webasto non-programmable)			○ <sup>9</sup>	○ <sup>9</sup>	
Twin glazed rear doors with heated rear window and wash-wipe	○ <sup>10</sup>	○ <sup>10</sup>			
Heated rear window with wash-wipe			○		
Tailgate with heated rear window and wash-wipe			○ <sup>11</sup>	• <sup>11</sup>	
Tailgate with heated rear window, wash-wipe and dark tinted windows in row 3			○ <sup>11</sup>		

OPTION SUMMARY	PANEL VAN		COMBI		PLATFORM CAB
	VAN	XTR+	COMBI	SX	
Dark tinted windows in row 3				○	
Look Pack – body colour partially painted front and rear bumpers, front fog lights, black electrically heated, folding twin lens door mirrors and side rubbing strips	○ <sup>12</sup>	○ <sup>12</sup>			○ <sup>12/13</sup>
Look Pack – body colour partially painted front and rear bumpers, front fog lights, black electrically adjustable, heated and folding twin lens door mirrors and 16" 'Narcisse' wheel covers (set of four)			○ <sup>12</sup>	○ <sup>12</sup>	
16" 'Narcisse' wheel covers (set of four)			○ <sup>4</sup>	•	
16" 'Vivace' alloy wheels (set of four)				○	
Front metallic suspension and rear pneumatic suspension, adjustable when vehicle is stationary	○ <sup>14</sup>		○	○	
Removable full steel bulkhead	○ <sup>10</sup>	○ <sup>10</sup>			
Removable full steel bulkhead with inset window	○ <sup>10</sup>	○ <sup>10</sup>			
Converter socket	○	○		•	
Metallic/Pearlescent paint	○	○	○	○	○
Special order paint (Fleet colours)	○ <sup>12</sup>	○ <sup>12</sup>	○ <sup>11/12</sup>		○ <sup>12</sup>
Special order paint (derogation colours)	○ <sup>12</sup>	○ <sup>12</sup>	○ <sup>11/12</sup>		○ <sup>12</sup>

- Standard equipment
- Optional factory fitted equipment

<sup>1</sup> On 1000 L1H1 HDi 90hp model only.

<sup>2</sup> Excludes 1000 L1H1 HDi 90hp model.

<sup>3</sup> Michelin Agilis S-1 tyres.

<sup>4</sup> When optional Look Pack is ordered, 'Narcisse' wheel covers are present.

<sup>5</sup> Not available on 1000 L1H1 1.6HDi 90hp model.

<sup>6</sup> Includes electrically adjustable, heated and folding twin lens door mirrors.

<sup>7</sup> Mobile phone compatibility can vary by phone manufacturer. Please consult your Dealer for further compatibility information.

<sup>8</sup> Standard on 1000 L1H1 2.0i 140hp; optional on other models.

<sup>9</sup> 9 seat Combi models only.

<sup>10</sup> Interior rear view mirror is standard if Visibility Pack is ordered, or if glazed rear doors are ordered with or without full steel bulkhead with inset window.

<sup>11</sup> Tailgate and special order paint are not compatible. If tailgate is ordered in conjunction with special order paint, the tailgate will be primed and not painted.

<sup>12</sup> Look Pack and special order paint are not compatible.

<sup>13</sup> Rear bumper not present.

<sup>14</sup> Excludes 1000 L1H1 2.0i 140hp model.

# CITROËN DISPATCH

## EQUIPMENT SPECIFICATION

	PANEL VAN		COMBI		PLATFORM CAB
	VAN	XTR+	COMBI	SX	
<b>SAFETY &amp; SECURITY</b>					
ABS	●	●	●	●	●
Emergency Braking Assistance (EBA)	●	●	●	●	●
Driver's airbag	●	●	●	●	●
Rear fog light with twin reversing lights	●	●	●	●	●
Warning light and audible warning system for driver's 'unfastened' seat belt	●	●	●	●	●
Transponder immobiliser	●	●	●	●	●
High-frequency remote control central locking with deadlocks and dashboard mounted control	●	●	●	●	●
Height-adjustable front seat belts	●	●	●	●	●
Three-point inertia reel seat belts on all seats	●	●	●	●	●
Front passenger's airbag	○	○	○	●	○
<b>LIGHTING &amp; VISIBILITY</b>					
Height-adjustable headlamps	●	●	●	●	●
Automatic illumination of cabin lighting via a ceiling mounted button	●	●	●	●	●
Two-speed and intermittent speed-sensitive windscreen wipers	●	●	●	●	●
Load compartment light	●	●			
Interior rear view mirror			●	●	
<b>Visibility Pack</b> – automatic illumination of headlamps, automatic rain-sensitive windscreen wipers, front fog lights and multi-function on-board trip computer	○	○	○	●	○
Air conditioning with electrically adjustable and heated twin lens door mirrors	● <sup>1</sup>	○	○	●	○
<b>COMFORT &amp; CONVENIENCE</b>					
Variable assisted steering	●	●	●	●	●
Driver's and passenger's sunvisor	●	●	●	●	●
Height and reach adjustable steering wheel	●	●	●	●	●
Front electric windows with 'one-touch' operation and anti-pinch	●	●	●	●	●
Sliding side windows in row 2			●	●	
12 volt socket on centre console	●	●	●	●	●
12 volt socket in load compartment	●	●			
12 volt socket in row 3				●	
Converter socket	○	○			●

- Standard equipment
- ◆ No cost option
- Optional factory fitted equipment

<sup>1</sup> Standard on 2.0i 16V 140hp model, optional on other models.

<sup>2</sup> On 1000 L1H1 HDi 90hp models only.

<sup>3</sup> Available as part of optional Look Pack.

<sup>4</sup> Available with rear window and wash-wipe.

<sup>5</sup> 8 anchorage points on Panel Vans and 6 anchorage points on Combi models.

<sup>6</sup> L1H1 and L2H2 versions have 5 anchorage points each side and L2H1 versions have 6 anchorage points each side.

<sup>7</sup> Includes front passenger's airbag.

	PANEL VAN		COMBI		PLATFORM CAB
	VAN	XTR+	COMBI	SX	
<b>STYLE</b>					
<b>EXTERIOR</b>					
Side rubbing strips	●	●	●	●	●
Tinted windows	●	●	●	●	●
15" steel wheels (215/65 R15)	● <sup>2</sup>				
16" steel wheels (215/60 R16)	● <sup>3</sup>				●
16" 'Narcisse' wheel covers (set of four)			○ <sup>3</sup>	●	
16" steel wheels (215/60 R16) with Michelin Agilis S-I tyres (set of four)		●			
Twin unglazed rear doors	●	●			
Twin glazed rear doors	○ <sup>4</sup>	○ <sup>4</sup>	●		
Tailgate with heated rear window and wash-wipe			○	●	
Twin sliding side loading unglazed doors	●	●			
Twin sliding side loading glazed doors			●	●	
<b>INTERIOR</b>					
Ladder frame bulkhead	●	●			
<b>DRIVER INFORMATION</b>					
Lockable fuel cap	●	●	●	●	●
Rev counter	●	●	●	●	●
Trip and total mileage recorders	●	●	●	●	●
Hazard warning light	●	●	●	●	●
Fuel gauge	●	●	●	●	●
Oil level indicator	●	●	●	●	●
Low battery charge warning light	●	●	●	●	●
Indicator warning light	●	●	●	●	●
Handbrake warning light	●	●	●	●	●
Side headlamps and main beam warning lights	●	●	●	●	●
Brake fluid warning	●	●	●	●	●
Metallic suspension	●	●	●	●	●

	PANEL VAN		COMBI		PLATFORM CAB
	VAN	XTR+	COMBI	SX	
<b>STORAGE</b>					
Overhead storage shelf	•	•	•	•	•
Lockable glove box	•	•	•	•	•
Door pockets with bottle holders	•	•	•	•	•
Floor mounted anchorage points	• <sup>5</sup>	• <sup>5</sup>	• <sup>5</sup>	• <sup>5</sup>	
Anchorage points on each side of the roof (max load 170kg)	• <sup>6</sup>	• <sup>6</sup>	• <sup>6</sup>	• <sup>6</sup>	
<b>SEATING</b>					
Height-adjustable front head restraints	•	•	•	•	•
Height-adjustable driver's seat	•	•	•	•	•
Lumbar adjustment on driver's seat	•	•	•	•	•
Dual passenger bench seat	•	•	•	• <sup>7</sup>	○
Individual front passenger seat	◆	◆	◆		◆
<b>AUDIO/NAVIGATION</b>					
RDS stereo radio/MP3 compatible CD player with steering mounted controls	•	•	•	•	•
Smarnav with Trackstar Stolen Vehicle Tracking	•	•			



# CITROËN DISPATCH

## DIMENSIONS & WEIGHTS



Up to 1188kg  
payload on Panel Vans



Up to 7m<sup>3</sup>  
of loadspace  
on Panel Vans

	VAN & COMBI				PLATFORM CAB
	L1	L2		L1H1	
	H1	H1	H2	XTR+	
<b>EXTERIOR DIMENSIONS (mm)</b>					
Length	4805	5135	5135	4805	5016
Height (empty) – metallic suspension	1942	1942	2276	1972	
Height (empty) – adjustable pneumatic rear suspension at nominal setting	1894	1894	2204		
Width (excluding door mirrors)	1895	1895	1895	1895	1895
Width (with door mirrors folded)	1986	1986	1986	1986	1986
Width (with door mirrors unfolded)	2194	2194	2194	2194	2194
Wheelbase	3000	3122	3122	3000	3122
Front overhang	975	975	975	975	975
Rear overhang	830	1038	1038	830	920
Front and rear track	1574	1574	1574	1574	1574
<b>LOAD COMPARTMENT DIMENSIONS (mm)</b>					
Load sill height (empty) – metallic suspension	562-604	562-604	562-604	592-634	
Load sill height (empty) – adjustable pneumatic rear suspension	491-500	491-500	491-500		
Load length	2254	2584	2584	2254	
Maximum load compartment height	1449	1449	1750	1449	
Maximum load width between sides	1600	1600	1600	1600	
Maximum load width between wheel arches	1245	1245	1245	1245	
Sliding side door height	1293-1301	1293-1301	1293-1301	1293-1301	
Sliding side door width	924	924	924	924	
Rear door height	1272	1272	1630	1272	
Rear door width (min)	1237	1237	1237	1237	
Degree to which rear doors open	90°/180°	90°/180°	90°/180°	90°/180°	
Load compartment volume (m <sup>3</sup> )	5	6	7	5	
<b>CONVERTIBLE AREA DIMENSIONS (mm)</b>					
Usable platform length (behind the cab)					2618
Maximum width of conversion					2100
Maximum interior width between wheel arches					1245

	GVW	KERB WEIGHT	PAYLOAD*	FRONT AXLE	REAR AXLE	MAX TRAILER <sup>▲</sup>	GTW
<b>WEIGHTS &amp; PAYLOADS (kg)</b>							
PANEL VAN							
1000 L1H1 HDi 90	2661	1673	988	1400	1700	2000	4333
1000 L1H1 HDi 120	2702	1714	988	1400	1700	2000	4702
1000 L1H1 140i	2661	1673	988	1400	1700	2000	4050
1200 L1H1 HDi 90	2861	1673	1188	1400	1700	2000	4333
1200 L1H1 HDi 120	2902	1714	1188	1400	1700	2000	4900
1200 L1H1 HDi 120 XTR+	2902	1739	1163	1400	1700	2000	4900
1200 L2H1 HDi 90	2880	1692	1188	1400	1700	2000	4333
1200 L2H1 HDi 120	2932	1744	1188	1400	1700	2000	4900
1200 L2H2 HDi 90	2900	1712	1188	1400	1700	1937	4333
1200 L2H2 HDi 120	2963	1775	1188	1400	1700	1937	4900
COMBI							
6 Seat L1H1 HDi 90	2683	1733	950	1400	1550	2000	4333
9 Seat L1H1 HDi 120	2759	1809	950	1400	1550	2000	4510
6 Seat L2H1 HDi 120	2791	1841	950	1400	1550	2000	4510
9 Seat L2H1 HDi 120	2791	1841	872	1400	1550	2000	4510
9 Seat L1H1 HDi 120 SX	2759	1809	950	1400	1550	2000	4510
9 Seat L2H1 HDi 120 SX	2791	1841	872	1400	1550	2000	4510
9 Seat L2H1 HDi 136 SX	2805	1855	950	1400	1550	2000	4780
PLATFORM CAB							
1200 L2 HDi 120	2900	1565	1398**	1400	1700	2000	4333

▲ Trailer weight must be reduced if vehicle is running at GVW to ensure that the GTW is not exceeded.

\* Includes driver.

\*\* Includes bodywork.



# CITROËN DISPATCH TECHNICAL SPECIFICATION

	PETROL MODEL	DIESEL MODELS		
	2.0i 16V 140hp	1.6HDi 16V 90hp	2.0HDi 16V 120hp	2.0HDi 16V 136hp DPFS <sup>†</sup>
<b>ENGINE</b>				
Capacity (cc)	1997	1560	1997	1997
Cylinders	4 in line	4 in line	4 in line	4 in line
Bore and stroke (mm)	85.0 x 88.0	75.0 x 88.3	85.0 x 88.0	85.0 x 88.0
Max power CEE (kW/rpm)	103/6000	66/4000	88/4000	100/4000
Max torque CEE (Nm/rpm)	180/2500	180/1750	300/2000	320/2000
Fuel system	Multipoint electronic fuel injection		High pressure direct diesel injection	
<b>TRANSMISSION</b>				
Five speed manual	•	•	•	•
Six speed manual				
<b>ECONOMY Litres/100km (mpg)</b>				
Combined	9.9 (28.5)	7.2 (39.2)	7.2/7.6 (39.2/37.2)*	7.3 (38.7)
<b>CO<sub>2</sub> EMISSIONS (g/km)</b>	235	191	194/200*	194
<b>BRAKES</b>	ABS with Emergency Braking Assistance (EBA)			
Front brakes/Rear brakes	1000 L1H1 1.6HDi 90hp – front discs, rear drums. All other models – front and rear discs			
<b>STEERING</b>	Variable power assisted steering			
Number of turns lock to lock	3.87	3.87	3.87	3.87
Turning circle between kerbs (m) L1/L2	12.2/12.6	12.2/12.6	12.2/12.6	12.2/12.6
<b>SUSPENSION</b>				
Metallic front suspension	Independent MacPherson type struts with triangulated lower suspension arms and anti-torsion bar			
Metallic rear suspension	Independent trailing arm suspension with semi-deformable crossmember, coil springs and inclined hydraulic dampers			
Pneumatic rear suspension	N/A	Independent trailing arm suspension with semi-deformable crossmember, pneumatic springs at a constant height and inclined hydraulic dampers with bump stops		
<b>FUEL TANK CAPACITY Litres (gallons)</b>	80 (17.6)	80 (17.6)	80 (17.6)	80 (17.6)



6 speed manual  
transmission  
on 2.0HDi models

<sup>†</sup> Diesel Particulate Filter System.

\* Min/max figures.

# GREEN EFFICIENCY. CITROËN HAS BEEN PIONEERING CLEANER, MORE FUEL-EFFICIENT MOTORING, SUCH AS THE COMMON RAIL HDi ENGINES NOW FITTED IN ALL NEW CITROËN DIESELS, LONG BEFORE ALL THE HYPE...

CITROËN HAS ALWAYS BEEN AT THE FOREFRONT OF GREENER TECHNOLOGY AND THE CITROËN DISPATCH MAINTAINS THAT TRADITION. IT'S WHY WE HAVE WON THE LCV MANUFACTURER OF THE YEAR 2009 AWARD. TODAY, WE HAVE ONE OF THE UK'S WIDEST RANGES OF LOW EMISSION VEHICLES. WE ALSO PRODUCE ONE OF THE UK'S MOST ECONOMICAL LIGHT COMMERCIAL VEHICLES, THE CITROËN NEMO VAN.



Citroën is a leader in the manufacture of low CO<sub>2</sub> emissions vehicles



**GO LO CO<sub>2</sub> WITH B30**  
All Citroën HDi diesel vans run on 30% bio-diesel

## › INTRODUCING A MORE ECOLOGICAL CAR

The Citroën C-Cactus concept, a car designed on ecological principles. It includes a significant proportion of recycled or recyclable materials and, like the plant it is named after, it is low on liquid consumption. At the same time, Citroën C-Cactus is designed to be no more expensive than a mid-range family car. This can be attributed to the use of new materials and to a rational design process using a smaller number of parts. Citroën C-Cactus is an essential vehicle reflecting a new vision of the car, many of its thoughts and themes will appear in modern Citroën vehicles to come.

## › AIRDREAM – A BENCHMARK

When it comes to the environment we wanted to show our genuine commitment as well as our profound expertise, so we have devised a benchmarking scheme with the signature 'Airdream' reserved exclusively for the cleanest vehicles in our range. To qualify for the Airdream signature, vehicles must meet three standards:

1. a) CO<sub>2</sub> emissions of 120g/km or less
2. b) fitted with DPFS with CO<sub>2</sub> below 158g/km.
2. Manufacturing quality of ISO14001.
3. 95% of recoverable materials.

# DRIVE YOUR WAY.

GET BEHIND THE WHEEL OF YOUR NEW CITROËN DISPATCH, WITH CITROËN'S RANGE OF FINANCE AND INSURANCE PRODUCTS.

## FOR BUSINESS USERS

### CITROËN CONTRACT MOTORING HIRE PURCHASE

A tried and tested finance package that allows you to own your vehicle.

### CITROËN CONTRACT MOTORING BUSINESS LEASE

An alternative to vehicle ownership that allows you to control your business cash flow and gain tax efficiencies.

### CITROËN CONTRACT MOTORING LEASE PURCHASE

Own a vehicle with a finance solution that offers ultimate flexibility to complement your business cash flow.

### CITROËN CONTRACT MOTORING CONTRACT HIRE

A non-ownership finance solution that keeps costs fixed and risks low.

► FOR MORE INFORMATION ON CITROËN FLEET AND BUSINESS SALES, PLEASE CALL CITROËN FLEET CONNECT ON 08457 940 940 OR LOOK US UP AT [WWW.CITROEN.CO.UK/FLEET](http://WWW.CITROEN.CO.UK/FLEET)

## ► ESSENTIAL CARE.

CITROËNS ARE RENOWNED FOR THEIR RELIABILITY – AND THE CITROËN DISPATCH IS NO EXCEPTION. WITH THE ADDED REASSURANCE OF A WARRANTY, ROUTINE SERVICING AND MAINTENANCE, AS WELL AS 24-HOUR ROADSIDE ASSISTANCE, YOU ARE PROTECTED.

### CITROËN WARRANTY

Every new Citroën van has the benefit of a 3 year\* warranty package, plus a 5 year anti-perforation\*\* warranty and a 2 year paint warranty.

\* 2 years' unlimited mileage manufacturer's warranty. No-fee customer option of 1 year's Dealer provided extended warranty, only on vans sourced from Citroën UK Limited. Note: Dealer provided warranty is limited to 100,000 miles for vans.

\*\* Against all internal to external perforation to bodywork or underbody.

### CITROËN ASSISTANCE

For all models except Citroën C6: In response to a free telephone call in the UK, Citroën Assistance brings rapid expert roadside assistance to you in an emergency. It comes free of charge for a full year and operates 24 hours a day in all parts of the UK and Europe. Services include nationwide recovery for both van and passengers, a home call service, replacement vehicle, hotel accommodation and vehicle storage if required. Please note, Citroën Assistance only applies to incidents covered by the new vehicle warranty, and excludes non-vehicle faults, such as running out of fuel, mis-fuelling, loss of keys, lock-ins, road traffic accidents and punctures/wheel changes. Citroën C6: Citroën Assistance covers all incidents and for a period of 3 years. Full details are available on request from Citroën UK via [cuk\\_contactcentre@citroen.com](mailto:cuk_contactcentre@citroen.com)

### CITROËN MAINTENANCE

From roadside assistance to replacing wear and tear parts or regular servicing, with Citroën Maintenance you have total peace of mind. For a one-off fee or low monthly payment, our experienced engineers will take care of your Citroën, whatever happens. To find out more, contact your Citroën Dealer or Citroën Authorised Repairer.

### CITROËN SERVICING

Available up to 1 year from your vehicle's registration date, but before its first chargeable service, a Citroën Servicing Package enables you to pay in advance for your vehicle's servicing needs for 3 years/35,000 miles. For further information, please contact your Citroën Dealer.

### CITROËN EXTENDED WARRANTY

With a Citroën Extended Warranty, we offer you the opportunity to continue your care-free motoring for a further 1 or 2 years beyond the 3 year warranty and up to 120,000 miles.

To find out more, contact your Citroën Dealer or call the Customer Contact Centre on 0844 463 3500.

Extended Warranty insurance is underwritten by Pinnacle Insurance PLC which is authorised and regulated by the Financial Services Authority.

## CITROËN INSURANCE

### CITROËN INSURANCE INSTANT COVER

To help you drive away your new van without delay, we offer Instant Cover insurance, providing you with 7 days comprehensive van insurance, for free!

### CITROËN INSURANCE MOTOR INSURANCE

Citroën Insurance has been designed specifically for our vehicles. You don't just get repairs you get Citroën expertise, service, quality and parts.

So, when the time comes to renew your insurance cover, call Citroën Insurance on 0870 024 2725.

Lines open 8am - 8pm weekdays, 9am - 5pm Saturdays. Max call charge from a BT landline is 8p per minute. Calls from other networks may vary. Alternatively, visit [www.citroen.co.uk](http://www.citroen.co.uk) for more information or to apply online.

### CITROËN INSURANCE FOR BUSINESS

If you are a business user (Self employed, sole trader, partnership, Limited company) you may want to consider a Citroën Insurance *for Business* policy. Simply call 0845 301 5975.

Lines open 9am - 5pm weekdays only.

Citroën Insurance is underwritten by UK Insurance Ltd. UK Insurance Limited is authorised and regulated by the Financial Services Authority. Citroën Insurance is a trading style of Banque PSA Finance UK which is authorised by the "Organisme pour le Registre des Intermédiaires en Assurance" (ORIAS) in France under number 07 008 501 and regulated by the French regulatory authority, the "Autorité de Contrôle des Assurances et des Mutuelles" (ACAM) and subject to limited regulation by the Financial Services Authority in respect of some aspects of the conduct of UK Insurance mediation business. Details on the extent of our regulation by the Financial Services Authority are available from Banque PSA Finance UK on request.



This brochure is made from paper from a well-managed forest. Citroën support responsible use of forest resources.

Please don't throw me away, give me to a friend or recycle me.

NOTE: Every endeavour has been made to ensure that the information and details contained in this brochure were accurate at the time of going to press January 2010. However the company reserves the right, whilst preserving the essential characteristics of the models described, to introduce at any time modifications, changes of details or equipment. Every effort will be made to bring this brochure up to date, but in order to avoid any misunderstandings please consult your Dealer. For full details of Citroën Care for Van and Driver, please see the full manufacturer's price list. The Citroën Website contains full information on all Citroën products and offers available in the UK, together with details of our environmental and recycling policies. The site address is: [www.citroen.co.uk](http://www.citroen.co.uk) or you can contact Citroën directly via [cuk\\_contactcentre@citroen.com](mailto:cuk_contactcentre@citroen.com)

**CITROËN prefers TOTAL**

CITROËN UK Ltd. 221 Bath Road, Slough SL1 4BA.  
[www.citroen.co.uk](http://www.citroen.co.uk)

CRÉATIVE TECHNOLOGIE

