



NEW CITROËN C4



CITROËN  
RANGE  
TEST DRIVE



## YOUR INVITATION TO TEST DRIVE THE CITROËN OF YOUR CHOICE TODAY



**WHATEVER YOU'RE LOOKING FOR, WE'VE GOT THE MODEL.**

WHETHER IT'S A SUPERMINI, HATCHBACK, ESTATE, COUPÉ OR MPV, THERE'S A CITROËN DESIGNED FOR YOU. SO WHY NOT ACCEPT OUR NO-OBLIGATION TEST DRIVE INVITATION IN THE CITROËN OF YOUR CHOICE?

**WHAT'S MORE, IF YOU TAKE A TEST DRIVE WE'LL GIVE YOU £10 WORTH OF M&S VOUCHERS WITH OUR COMPLIMENTS.**

To arrange your test drive, click on the link below and enter your details. Your local dealer will contact you to arrange a convenient date and time for you to take your test drive. You will receive a coupon in the post that your dealer will validate following your test drive.

**> CLICK TO BOOK A CITROËN TEST DRIVE**





CITROËN C4













RADIO

MUSIC

NAV

TRAFFIC

PHONE

SETUP

MP3

3

6



A/C

REST

AUTO



# POSITIVE POWER. FROM ITS FLUID SURFACES AND SHARP LINES, TO THE INNOVATIONS THAT BRING HIGHER LEVELS OF EFFICIENCY AND DRIVER ENJOYMENT, NEW CITROËN C4 ACCENTUATES THE POSITIVE IN EVERY DETAIL.

NEW CITROËN C4 IS THE EMBODIMENT OF STRENGTH, CONTROL AND EFFICIENT ENGINEERING. ALTHOUGH COMPACT, NEW CITROËN C4'S ROBUST DESIGN PROVIDES MASSES OF USABLE SPACE: IT'S EFFORTLESSLY PRACTICAL IN EVERY SITUATION. FOR DRIVERS, A COMBINATION OF RESPONSIVE HANDLING, PRECISE STEERING, RIDE COMFORT AND INTELLIGENTLY PLACED CONTROLS ENHANCES EVERY TRIP, WHILST EFFICIENT ENGINEERING IS THE CATALYST IN THE EQUATION. CONSTRUCTION IS ADVANCED AND LIGHTWEIGHT; ENGINES AND TRANSMISSIONS DELIVER BOTH PERFORMANCE AND ECONOMY.

› **CONTENTS:** 10 POSITIVE POWER 12 STRONG ON STYLE 14 INNER STRENGTH 16 SERENE CONTROL 18 REDEFINING THE COMFORT ZONE 20 BIG IDEAS, SMALL FOOTPRINT 22 SAFER THAN EVER 24 RANGE OVERVIEW 26 OPTIONS 27 COLOURS, TRIMS & WHEEL OPTIONS 28 EQUIPMENT SPECIFICATION 30 TECHNICAL SPECIFICATION 32 ACCESSORIES 33 ENVIRONMENTAL COMMITMENT 34 FINANCE, CARE & INSURANCE 35 GLOSSARY & DIMENSIONS





CITROËN C4



**STRONG ON STYLE.** NEW CITROËN C4 HAS A STRIKING EXTERIOR THAT'S ASSERTIVE, ELEGANT AND SURPRISINGLY COMPACT. IT FEATURES DETAILS AND DESIGN ELEMENTS THAT MAKE A CHARISMATIC WHOLE.

THE FLUSH CURVES OF THE BONNET AND HEADLIGHTS ACCENTUATE THAT ICONIC CHROME DOUBLE CHEVRON GRILLE, WHILE THE DUAL SWAGE LINES DOWN EACH SIDE HINT AT NEW CITROËN C4'S DYNAMIC STRENGTHS. EVERY SHAPE – SUCH AS THE SCULPTED WING MIRRORS – IS AERODYNAMIC AND BOLD. EACH FEATURE ADDS CHARACTER: IT STARTS AT GROUND LEVEL WITH THE CHOICE OF STUNNING 16", 17" AND 18" ALLOY WHEELS. ON VTR+ AND EXCLUSIVE THIS FLOWS THROUGH THE CHROME WINDOW SILLS, DARK TINTED REAR SIDE AND TAILGATE GLASS, AND GLOSS BLACK INSERTS.





**INNER STRENGTH.** THERE IS A FEELING OF SUBSTANCE INSIDE NEW CITROËN C4. EVERYWHERE. EVERYTHING THAT YOU SEE AND TOUCH HAS BEEN CAREFULLY SELECTED TO PROVIDE TACTILE PLEASURE AND EFFORTLESS FUNCTIONALITY.

THE DASHBOARD AND FASCIA HAS BEEN DESIGNED TO CONTAIN THE MINIMUM NUMBER OF PARTS FOR STRENGTH, AND IT IS SOFT TO THE TOUCH. THE CLEAR CONTROLS AND VENTS HAVE COOL SATIN CHROME SURROUNDS, WHILE THE LEATHER RIMMED STEERING WHEEL ON VTR+ AND EXCLUSIVE MODELS PUTS A WHOLE SPECTRUM OF CONTROLS PRECISELY WHERE THEY ARE NEEDED. THE GEARSHIFT ON EGS VERSIONS IS MADE FROM A SINGLE PIECE OF STEEL, WRAPPED IN LEATHER, AND EXCLUSIVE MODELS FEATURE A PART LEATHER INTERIOR. THESE PRECISION FORMED CONTACT POINTS SHARPEN THE SINGULAR APPEAL OF NEW CITROËN C4.









CITROËN

MP3

1  
2  
3  
4  
5  
6

ESC  
RADIO

AUTO

19°C

# SERENE CONTROL. NEW CITROËN C4'S DRIVER FOCUSED CABIN SIMPLY MAKES LIFE EASIER, SAFER AND MORE ENJOYABLE.

TO CREATE THE HUSHED AMBIENCE ASSOCIATED WITH HIGH-END VEHICLES, CABIN SOUNDPROOFING HAS BEEN CAREFULLY ENGINEERED TO FILTER OUT ROAD, MECHANICAL AND WIND NOISE. NO DETAIL HAS BEEN NEGLECTED: EVEN THE SOUND OF THE AIR CONDITIONING FANS AND PARKING BRAKE HAVE BEEN REFINED AND MINIMISED. WITH EXCEPTIONAL QUIET AS A BACKDROP, THE STANDARD SURROUND SOUND SYSTEM ADAPTS TO THE ARCHITECTURE OF THE CABIN AND OPTIMISES SPEAKER PERFORMANCE. THE RESULT IS SUPERIOR SOUND WHEREVER YOU GO.

Refining acoustics further, new polyphonic sound alerts, optional on VTR+ and standard on Exclusive, provide four distinct themes that match different vehicle functions. They have each been fine tuned to match new Citroën C4's focused calm.

Adding to the sense of quiet sophistication, the cool blue instrument cluster fuses analogue and digital display technology to create perfect legibility: the blue shade is fully adjustable. Meanwhile the automatic air conditioning, standard on Exclusive or optional on VTR+, allows fine tuning of the interior ambience – it even carries on working for several minutes after the engine is switched off.

## > CONTROL ZONES

The beautifully designed steering wheel puts audio, communication and driving functions such as cruise control in their own logical 'zones' at the driver's fingertips.



## > STORE AND CONNECT

On VTR+ models, the centre console puts USB and 12V sockets plus two secure cup holders near at hand.



## REDEFINING THE COMFORT ZONE.

AN EXCEPTIONAL INTERIOR NEEDS DESIGN AND MATERIALS THAT APPEAL AT A GLANCE AND TO THE TOUCH, GENEROUS SPACE, QUIET AND PURE COMFORT. IT MUST PROVE ITS VERSATILITY WITH ENDLESS USEFUL DETAILS AND STORAGE IDEAS... WELCOME ABOARD.

NEW CITROËN C4'S DASHBOARD ARCHITECTURE FREES UP EXCEPTIONAL LEGROOM FOR FRONT OCCUPANTS, WHILE THERE ARE FOUR DIFFERENT CENTRE CONSOLE DESIGNS, EACH PACKED WITH STORAGE SPACE FOR PHONES, DRINKS AND OTHER ESSENTIALS. THE RAISED CENTRE CONSOLE THAT COMES WITH THE EGS GEARBOX EVEN INCLUDES A LARGE REFRIGERATED AND ILLUMINATED COMPARTMENT WITH SLIDING SHUTTER, PLUS A NEAT UPPER DRAW THAT CAN BE EXTENDED FOR EASY CONNECTION OF MOBILES TO THE USB OR 12V SOCKET.

Occupants can enjoy plenty of space, including generous door pockets. In the front they can accommodate a 1.5 litre bottle and A4 documents with ease and rear doors will hold a 0.5 litre drink plus paperback. When it comes to travelling essentials, new Citroën C4 has them covered.



### > LOADING...

Maximising usable room everywhere, new Citroën C4 has the largest boot in its class with up to 408 litres, and on Exclusives the split-folding rear seats include a ski hatch for long loads.







# BIG IDEAS, SMALL FOOTPRINT. TAKING FULL ADVANTAGE OF NEW CITROËN C4'S LIGHTWEIGHT ENGINEERING, e-HDi BRINGS ADVANCED TECHNOLOGIES TOGETHER WITH EXTRAORDINARY RESULTS.

15 YEARS OF DEVELOPMENT HAVE GONE INTO OUR HDi DIRECT INJECTION ENGINES, MAKING THEM REFINED AND FRUGAL. IN COMBINATION WITH A BEAUTIFULLY SIMPLE STOP & START SYSTEM AND SOPHISTICATED EGS GEARBOX, THE e-HDi 110 CAN ACHIEVE 67.3MPG AND CO<sub>2</sub> EMISSIONS OF ONLY 109G/KM. ALL PETROL ENGINES BENEFIT FROM VARIABLE VALVE TIMING, WHICH GUARANTEES OUTSTANDING PERFORMANCE AND ECONOMY. THIS RANGE OF PETROL AND DIESEL ENGINES PERFECTLY COMPLEMENTS A CAR THAT HAS BEEN DESIGNED TO BE AS LIGHTWEIGHT AS POSSIBLE TO DELIVER SUPREME PERFORMANCE AND EFFICIENCY. FOR EXAMPLE THE THP 155 EGS6 PETROL ENGINE ACHIEVES 0-62MPH IN 8.7 SECONDS YET STILL RETURNS 44.1MPG ON THE COMBINED CYCLE.

The EGS gearbox, available on e-HDi and THP 155 EGS6 models, is an advanced transmission that lets you select either effortless full automatic shifts, or manual changes via the steering wheel mounted paddles. It's part of what makes Citroën efficient engineering unique.

Another innovation is Stop & Start, which puts the engine into idle mode as you decelerate and stops altogether as you come to a halt. The moment you take your foot off the brake, it restarts silently and without vibration. It helps to reduce CO<sub>2</sub> by about 5g/km and fuel consumption by 15% in the city.







# SAFER THAN EVER. AS A HUB OF ADVANCED TECHNOLOGY, YOU WOULD EXPECT NEW CITROËN C4 TO BE A SAFETY BENCHMARK AND IT IS, BRINGING A WHOLE RANGE OF INTELLIGENT SOLUTIONS TO THE ROAD.

THE OPTIONAL BLIND SPOT MONITORING SYSTEM IS A PERFECT EXAMPLE. USING FOUR SENSORS MOUNTED IN THE BUMPERS, IT WARNS YOU IF THERE IS AN UNSEEN VEHICLE, WITH PICTOGRAMS THAT APPEAR IN THE DOOR MIRRORS. ESP WITH INTELLIGENT TRACTION CONTROL HELPS TO MAINTAIN COMPLETE STABILITY ON EVERY BEND, WHILST THE CORNERING LIGHT FUNCTION ON VTR+ AND EXCLUSIVE ILLUMINATES EACH TWIST AND TURN, USING THE FOG LIGHTS IN PARTNERSHIP WITH DIPPED MAIN BEAM TO ILLUMINATE POTENTIAL HAZARDS UP TO 75 DEGREES LEFT AND RIGHT. NEW CITROËN C4 HAS ALSO BEEN AWARDED THE MAXIMUM 5-STAR RATING BY EURO NCAP.



## > THE FUTURE OF PARKING

With natural poise, sure-footed handling, Electronic Stability Programme (ESP) and powerful ABS with Electronic Brakeforce Distribution (EBD), new Citroën C4 inspires confidence on the move, but it's also advanced the art of parking on Exclusive models. Spot a potential space and the gap measurement system will let you know if it's big enough. Front parking sensors will then make tucking into the space safe and easy. Rear parking sensors are also standard on VTR+ and Exclusive models.



## > ETOUCH: UNRIVALLED PEACE OF MIND

The remarkable Citroën eTouch Emergency and Assistance system is free for the whole life of the vehicle and available 24 hours a day, 7 days a week. Using GPS and an integrated SIM card, it pinpoints your location in the event of an accident or breakdown, alerting the emergency services or Citroën Assistance.





**THREE NEW DIMENSIONS.**  
THE NEW CITROËN C4 RANGE  
BRINGS A CHOICE OF THREE  
MODELS, BUT EACH ONE  
ADDS A NEW MEANING TO  
'STANDARD SPECIFICATION'.

FROM VTR TO VTR+ AND EXCLUSIVE, YOU WILL DISCOVER AN ARRAY  
OF ADVANCED EQUIPMENT AND DETAILS THAT TOGETHER MAKE YOUR  
JOURNEYS FAR FROM STANDARD. ALL YOU HAVE TO DECIDE IS HOW FAR...



# VTR

## THE FLYING START

WITH FEATURES THAT REINFORCE NEW CITROËN C4'S UNIQUE ATTRIBUTES, AND SOME SERIOUS ENGINEERING INSIDE AND OUT, THIS IS AN EXCEPTIONAL POINT OF DEPARTURE.

### > CITROËN C4 VTR SPECIFICATION INCLUDES:

- ABS with Electronic Brakeforce Distribution (EBD)
- Emergency Braking Assistance (EBA)
- Electronic Stability Programme (ESP) with traction control
- Driver's, front passenger's and front lateral airbags
- Curtain airbags for front and rear passengers
- Hill Start Assist
- High-frequency multi-function remote control plip (two) central locking with deadlocks
- Front seat belts pre-tensioners with force-limiters
- Daytime-running headlamps
- Halogen headlamps
- Body colour painted door handles and door mirrors
- Body colour painted front and rear bumpers
- 16" 'Atlanta' wheel covers (set of four)
- Multi-functional steering wheel
- Variable power assisted steering
- Cruise control with speed limiter
- Electrically adjustable and heated door mirrors
- Front electric windows with 'one-touch' operation and anti-pinch
- Air conditioning
- Heated rear hatchback window
- Multi-function on-board trip computer
- RDS stereo radio/CD player with 6 loudspeakers, surround sound and jack socket
- Mobile ashtray and cigarette lighter
- Gear Efficiency Indicator (manual models only)
- Matt black rear spoiler and B pillars
- 'Black panel' night-time instrument lighting
- Low centre console with open storage compartments
- Front and rear courtesy and reading lights
- Illuminated and ventilated glovebox

# VTR+

## MOVE ON UP

THE NAME SPEAKS VOLUMES. USING VTR AS AN EXCELLENT LAUNCHPAD, VTR+ SIMPLY ADDS MORE CONVENIENCE AND STYLE.

### > CITROËN C4 VTR+ SPECIFICATION IN ADDITION TO VTR INCLUDES:

- Leather steering wheel with chrome inserts
- Rear parking sensors
- Front fog lights and cornering light function
- Front seats with lumbar adjustment
- 16" 'Boston' alloy wheels (set of four)
- Electrically folding door mirrors with integrated kerb side LED
- Rear electric windows with 'one-touch' operation and anti-pinch
- Chrome side window sills
- Chrome strip on rear bumper
- Dark tinted rear side and tailgate windows
- Leather parking brake handgrip (VTR+ manual models only)
- Customisable colour instrument panel
- Automatic electric parking brake (EGS models only)
- Cruise control with speed limiter and favourite speeds memory
- Rechargeable torch and 12 volt socket in boot
- Semi-raised centre console with open storage compartment and sliding front armrest with storage (excludes EGS models)
- Raised centre console with large closed refrigerated storage compartment and sliding height-adjustable front armrest with storage (EGS models only)
- Glossy black rear spoiler and B pillars
- **Connecting Box** – Bluetooth system® with USB socket

# EXCLUSIVE

## THE A-Z OF C4

AESTHETICALLY, TECHNICALLY, PRACTICALLY, LUXURIOUSLY... EVERYTHING GOOD HAS GONE INTO THE RANGE-TOPPING EXCLUSIVE. YOU AND YOUR PASSENGERS WILL WANT FOR NOTHING.

### > CITROËN C4 EXCLUSIVE SPECIFICATION IN ADDITION TO VTR+ INCLUDES:

- Front parking sensors with parking space 'gap' measurement system
- 'Saint Cyr' cloth/'Claudia' leather/'Dinamica' upholstery
- Perimetric and volumetric anti-theft alarm
- 17" 'Phoenix' alloy wheels (set of four)
- Automatic digital air conditioning with dual-zone temperature setting
- Footwell and connectivity zone lighting
- Automatic rain-sensitive windscreen wipers, automatic illumination of headlamps and electrochrome rear view mirror
- Front seats with electric lumbar adjustment and massage function
- Rear centre armrest with ski-flap
- Citroën eTouch Emergency & Assistance system
- 'Guide-me-home' headlamp function
- Chrome inserts on front bumper and chrome front grille surround
- Polyphonic, customisable sound alerts
- Automatic electric parking brake (all models)
- Raised centre console with open storage compartments and sliding height-adjustable front armrest with storage (manual models only)
- LED reading lights
- Front and rear scuff plates

	CO <sub>2</sub> EMISSIONS (G/KM)		
	VTR	VTR+	EXCLUSIVE
<b>PETROL ENGINE AVAILABILITY</b>			
VTi 95 manual*	140	140	
VTi 120 manual		143	146
VTi 120 automatic*		159	
THP 155 EGS6			148
<b>DIESEL ENGINE AVAILABILITY</b>			
HDi 90 manual	110	110	
HDi 110 6-speed manual		119	122
e-HDi 110 Airdream EGS6		109	114
HDi 150 6-speed manual			130

\* Available from March 2011

# PROGRESSIVE PERSONALITY. THE OPTIONS AVAILABLE FOR NEW CITROËN C4 REFLECT A CAR THAT IS ADVANCED TO ITS CORE.

THE LATEST SATELLITE NAVIGATION, A STUNNING SOUND SYSTEM AND PACKS BASED AROUND INGENUOUS AUTOMATION OR VISUAL SOPHISTICATION STRENGTHEN THE SENSE OF PROGRESSIVE INDIVIDUALITY.

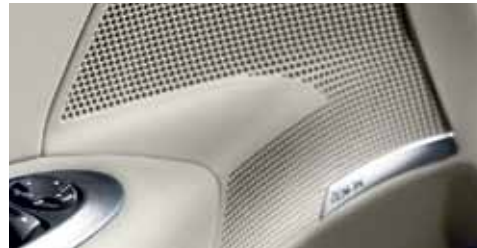
## › EMYWAY SATELLITE NAVIGATION SYSTEM

With its large 7" screen and sleek, integrated look, eMyWay satellite navigation system helps you travel effortlessly around the UK and Europe. Its in-built memory provides information about speed limits and lets you know which lane to use when reaching complex intersections. The system also lets you adapt your route based on traffic conditions, with data provided by Traffic Master and ViaMichelin in the UK and France.



## › EMYWAY AND DENON HI-FI SYSTEM

On Exclusive models you can enjoy a powerful Denon Hi-Fi system that is acoustically optimised to the interior. With eight speakers mounted in doors and dashboard, a stylishly housed 100W subwoofer in the boot and a 300W 10 channel DSP amplifier, this is tailor made music for new Citroën C4 – you won't want to get out!



## › AUTOMATIC PACK

The Automatic Pack combines automation and advanced technology to enhance your comfort, add convenience and raise levels of safety – it puts you in complete, relaxed control. Automatic digital air conditioning can be adjusted through soft, medium and strong intensity settings.



## › VISION PACK

Making sure you don't miss a thing, the Vision Pack includes Xenon Dual-function Directional headlamps with washer jets. A famous Citroën creation, the latest xenon swivelling headlights follow the steering wheel position, sending a crystal clear beam further into bends and junctions, dramatically improving visibility. The pack also includes an advanced blind spot monitoring system and tyre pressure monitor.



## › PANORAMIC SUNROOF WITH ELECTRIC SUNBLIND OPERATION

Let maximum light into the cabin of new Citroën C4 with this panoramic sunroof and if it gets too bright simply close the electric sunblind.

OPTION SUMMARY	VTR	VTR+	EXCLUSIVE
<b>eMyWay</b> – colour satellite navigation, live traffic information, European mapping and Connecting Box (Bluetooth® system with USB socket)		○ <sup>1</sup>	○ <sup>1</sup>
eMyWay and Denon Hi-Fi system			○ <sup>1</sup>
Full size spare wheel	○	○ <sup>2</sup>	
Space saver spare wheel		○ <sup>3</sup>	○
<b>Automatic Pack</b> – automatic digital air conditioning with dualzone temperature setting, REST function and 3 intensities, automatic rain-sensitive windscreen wipers, automatic illumination of headlamps, electrochrome rear view mirror, 'Guide-me-home' headlamp function and polyphonic, customisable sound alerts		○	●
<b>Vision Pack</b> – Xenon Dual-function Directional headlamps with washer jets, blind spot monitoring and tyre pressure monitor			○ <sup>4</sup>
Panoramic sunroof with electric sunblind operation		○ <sup>5</sup>	○
Babylon Red pearlescent paint with special varnish	○	○	○
Metallic/Pearlescent paint	○	○	○

● Standard equipment

○ Optional factory fitted equipment

<sup>1</sup> Mobile phone compatibility can vary by phone manufacturer. Please consult your Dealer for further compatibility information.

<sup>2</sup> Excludes e-HDi models.

<sup>3</sup> e-HDi models only.

<sup>4</sup> When ordered, standard heightadjustable headlamps are not present.

<sup>5</sup> Includes front and rear LED reading lights.

# THE ART OF CHOICE. BOLD AND SUBTLE BODY COLOURS, CHOSEN TO COMPLEMENT NEW CITROËN C4'S FINELY JUDGED INTERIOR TRIMS... 4 STUNNING WHEEL DESIGNS... THESE ARE THE RAW MATERIALS TO INSPIRE YOUR IMAGINATION AND INDIVIDUAL TASTE.

## > BODY COLOURS



Polar White



Show Red (P)



Perla Nera Black (P)



Hickory Brown (P)



Babylon Red (P)



Shark Grey (M)



Arctic Steel (M)



Bourrasque Blue (M)

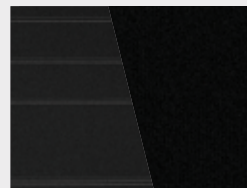


Mativoire Beige (M)



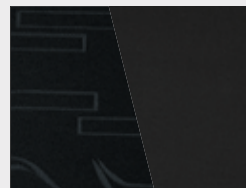
Fluid Grey (M)

## > TRIMS



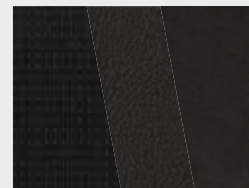
Standard on VTR models

Mistral 'Ponty' cloth



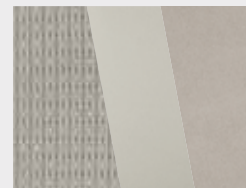
Standard on VTR+ models

Mistral 'Hermitage' cloth



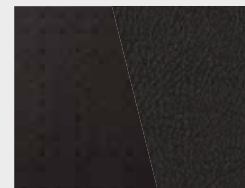
Standard on Exclusive models

Mistral 'Saint Cyr' cloth, mistral 'Claudia' leather, tramontane 'Dinamica'



Available on Exclusive models<sup>1</sup>

Lama 'Saint Cyr' cloth, lama 'Claudia' leather, lama 'Dinamica'



Optional on Exclusive models<sup>2</sup>

Mistral 'Claudia' leather

(P) Pearlescent  
(M) Metallic

- Standard equipment
- Optional factory fitted equipment

<sup>1</sup> Available on request on Perla Nera Black, Shark Grey, Bourrasque Blue or Show Red body colours only. <sup>2</sup> Includes heated front seats  
Please note: Colours and pictures shown are for illustration purposes only. Please consult your Dealer for definitive colour and trim/upholstery details. 'Claudia' leather includes other accompanying material.

16" 'ATLANTA' WHEEL COVERS  
Set of four  
Tyres: 205/55 R16

VTR	VTR+	EXCLUSIVE
●		



16" 'BOSTON' ALLOY WHEELS  
Set of four  
Tyres: 205/55 R16

VTR	VTR+	EXCLUSIVE
	●	



17" 'PHOENIX' ALLOY WHEELS  
Set of four  
Tyres: 225/45 R17

VTR	VTR+	EXCLUSIVE
		●



18" 'NEWPORT' ALLOY WHEELS  
Set of four  
Tyres: 225/40 R18

VTR	VTR+	EXCLUSIVE
		○





	VTR	VTR+	EXCLUSIVE
<b>STORAGE</b>			
Central fascia closed compartment	•	• <sup>10</sup>	• <sup>10</sup>
Front and rear door pockets	•	•	•
Front seat back pockets	•	•	•
Drawer under front passenger's seat	•	•	•
Drawer under driver's seat	•	•	•
Illuminated and ventilated glove box	•	•	•
Rechargeable torch and 12 volt socket in boot	•	•	•
Cup/mobile ashtray holder	•	•	•
Rear centre armrest with ski flap	•		•
Low centre console with open storage compartments	•		
Semi-raised centre console with open storage compartment and sliding front armrest with storage		• <sup>2</sup>	
Raised centre console with open storage compartment and sliding height-adjustable front armrest with storage			• <sup>2</sup>
Raised centre console with large closed refrigerated storage compartment and sliding height-adjustable front armrest with storage		• <sup>3</sup>	• <sup>3</sup>

<b>IN-CAR ENTERTAINMENT</b>			
RDS stereo radio/CD player with 6 loudspeakers, surround sound and jack socket	•	•	•
Connecting Box – Bluetooth system® with USB socket		• <sup>11</sup>	• <sup>11</sup>

	VTR	VTR+	EXCLUSIVE
<b>COMFORT &amp; CONVENIENCE</b>			
Variable power assisted steering	•	•	•
Height and reach adjustable steering wheel	•	•	•
Multi-functional steering wheel	•	•	•
Cruise control with speed limiter	•		
Cruise control with speed limiter and favourite speeds memory		•	•
Sunvisors with covered and illuminated courtesy mirror	•	•	•
Mobile ashtray and cigarette lighter	•	•	•
Front electric windows with 'one-touch' operation and anti-pinch	•	•	•
Rear electric windows with 'one-touch' operation and anti-pinch		•	•
Rear parking sensors		•	•
Front parking sensors with parking space 'gap' measurement system			•
Air conditioning	•		
Automatic digital air conditioning with dual-zone temperature setting, REST function and 3 intensities		• <sup>5</sup>	•



# TECHNICAL SPECIFICATION



**67.3mpg**  
on HDi 90 manual  
& VTR+ e-HDi 110 Airdream  
EGS6 models



**109g/km CO<sub>2</sub>**  
on VTR+ e-HDi 110 Airdream  
EGS6 models

	PETROL MODELS			
	VTi 95	VTi 120	VTi 120 automatic	THP 155
<b>ENGINE</b>				
Capacity (cc)	1397	1598	1598	1598
Cylinders	4 in line	4 in line	4 in line	4 in line
Max power CEE (kW/rpm)	70/6000	88/6000	88/6000	115/6000
Max torque CEE (Nm/rpm)	135/4000	160/4250	160/4250	240/1400
Fuel system	Multi-point electronic fuel injection			Multi-point electronic turbocharged fuel injection
Euro status	Euro 5	Euro 5	Euro 5	Euro 5
<b>TRANSMISSION</b>				
Transmission type	Five speed manual	Five speed manual	Four speed sequential auto-adaptive automatic	Six speed Electronic Gearbox System
Clutch type	Dry single plate	Dry single plate	N/A	Dry single plate
<b>PERFORMANCE</b> (All figures driver alone)				
Max speed (mph)	113	120	TBC	133
0-62mph (secs)	TBC	10.8	TBC	8.7
Standing 1000m (secs)	34.3	32.2	TBC	29.4
<b>ECONOMY</b> (Official Government test fuel consumption figures) Litres/100km (mpg)				
		VTR+	Exclusive	
Urban cycle	TBC	8.8 (32.1)	8.9 (31.7)	TBC
Extra urban	TBC	4.7 (60.1)	4.8 (58.9)	TBC
Combined	6.1 (46.3)	6.2 (45.6)	6.3 (44.8)	TBC
<b>CO<sub>2</sub> EMISSIONS</b> (g/km)				
	140	143	146	159
Please note: the maximum plated weights must not be exceeded. <b>WEIGHTS</b> (kg)				
Mass in service	TBC	1370	TBC	1420
Max laden weight	1720	1765	TBC	1805
Gross train weight	2920	3065	3055	3205
Max towing weight braked	1450	1550	1550	1650
Max towing weight unbraked	635	640	670	675
Max tow hitch download	75	75	75	75
<b>BRAKES</b>				
ABS with EBD and EBA as standard on all models. Front ventilated discs, rear discs.				
<b>STEERING</b>				
Variable power assisted steering				
Turning circle between kerbs (m)	10.7			
<b>SUSPENSION</b>				
Anti-roll bars front and rear. Front: MacPherson strut/coil springs/hydraulic dampers. Rear: independent trailing arms/coil springs/hydraulic dampers.				
<b>FUEL TANK CAPACITY</b> Litres (gallons)				
60 (13.2)				
<b>EXTERIOR DIMENSIONS</b> (mm)				
Length/width/height/wheelbase				
4329/1789/1491/2608				
<b>BOOT VOLUMES &amp; DIMENSIONS</b>				
Seats up – below parcel shelf min/max (litres VDA)			380/408	
Seats down – up to roof (litres VDA)			1183	
Depth under parcel shelf (mm)			553	

## DIESEL MODELS

HDi 90	HDi 110	e-HDi 110 Airdream	HDi 150
1560 4 in line 68/4000 230/1750	1560 4 in line 82/3600 270/1750	1560 4 in line 82/3600 270/1750	1997 4 in line 110/3750 340/2000
High pressure direct diesel injection			
Euro 5	Euro 5	Euro 5	Euro 5
Five speed manual Dry single plate	Six speed manual Dry single plate	Six speed Electronic Gearbox System Dry single plate	Six speed manual Dry single plate
112 12.9 34.1	118 11.3 32.6	118 11.2 32.7	129 8.6 29.9
	VTR+      Exclusive	VTR+      Exclusive	
5.2 (54.3) 3.6 (78.5) 4.2 (67.3)	5.8 (48.7) 3.9 (72.4) 4.6 (61.4)	5.9 (47.9) 4.0 (70.6) 4.7 (60.1)	4.7 (60.1) 4.9 (57.6) 4.0 (70.6) 4.4 (64.2)
110	119      122	109      114	130
1388 1790 2890 1350 640 75	1440 1810 3110 1550 675 75	1440 1825 3125 1550 680 75	1501 1885 3385 1750 695 75
ABS with EBD and EBA as standard on all models. Front ventilated discs, rear discs.			
Variable power assisted steering			
	10.7		11.46
Anti-roll bars front and rear. Front: MacPherson strut/coil springs/hydraulic dampers. Rear: independent trailing arms/coil springs/hydraulic dampers.			
60 (13.2)			
4329/1789/1491/2608			
380/408 1183 553			





# FREE EXPRESSION. BE INSPIRED AND EXPRESS YOUR CREATIVITY WITH NEW CITROËN C4 ACCESSORIES THAT ARE DESIGNED TO FAITHFULLY REFLECT YOUR NEEDS.

FROM ROOFBARS TO TOWBARS, FROM LUXURY TOUCHES TO PRACTICAL EQUIPMENT, YOU'LL FIND THE SOLUTIONS YOU'RE LOOKING FOR. VISIT [WWW.ACCESSORIES.CITROEN.CO.UK](http://WWW.ACCESSORIES.CITROEN.CO.UK) TO VIEW THE FULL RANGE OF CITROËN C4 ACCESSORIES.



## > WIFI ON BOARD

Citroën's new 'WiFi on Board' system creates an in-car wireless network, allowing simultaneous internet connection for multiple WiFi devices such as laptops, smartphones and game consoles.

Requires a 3G/3G+ SIM, which is not included.



## > TOMTOM SATELLITE NAVIGATION

TomTom satellite navigation devices to suit any budget and ensure you and your Citroën C4 stay on the right road.



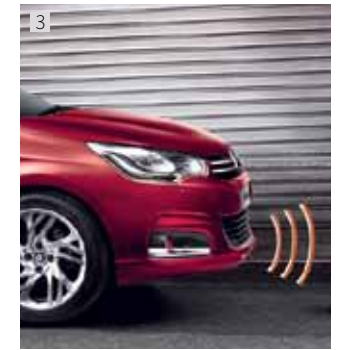
## > 1 MUDFLAPS

Contoured front and rear mudflaps protect bodywork and enhance safety in poor weather.



## > 2 ALLOY WHEELS

Add your personal touch with our alloy wheel range. These alloys have been designed and developed featuring a bold design with clean lines, alloy wheels are one of the few parts that can profoundly affect a vehicle's appearance.



## > 3 PARKING SENSORS (FRONT & REAR)

Parking becomes stress-free with Citroën's front and rear parking sensors, which are subtly integrated into your new Citroën C4's bumpers.



## > 4 STORAGE

Expand the capabilities of your new Citroën C4 with various storage accessories including cargo nets and luggage compartment dividers.

## > 5 TOWBARS

Citroën towbars have been developed to ensure the highest standards of safety and strength.



## > 6 ROOF BARS

Citroën traversing roofbars are designed to match the contours of your Citroën C4 and can be used with Citroën bicycle carriers, ski/snowboard carriers and roof boxes for quick and easy transport and storage solutions.

# EFFICIENCY MINUS COMPROMISE. CITROËN HAS CREATED FUELEFFICIENT VEHICLES WITHOUT SACRIFICING DRIVER ENJOYMENT FOR SOME TIME. THE LATEST ADVANCES TAKE THIS FINE BALANCE FURTHER STILL...

WITH THE PROVEN CREDENTIALS AND ENVIRONMENTAL PERFORMANCE OF CITROËN HDi DIRECT INJECTION ENGINES AS INSPIRATION, e-HDi ADDS NEW TECHNOLOGY, SUCH AS A SMOOTH, SIMPLE STOP & START SYSTEM, AND EGS GEARBOX. THE RESULTS ARE A DRAMATIC REDUCTION IN BOTH FUEL CONSUMPTION AND CO<sub>2</sub> EMISSIONS, COMBINED WITH RESPONSIVE PERFORMANCE WHEREVER YOU GO.



On the technology side, we've been equipping more of our vehicles with more environmentally friendly breakthroughs, such as our Electronic Gearbox System (EGS), which boasts impressively greener credentials, with less pollution and up to 5% more economy than a conventional manual gearbox system. In addition, Citroën has expanded the use of the exceptionally efficient, self-regenerating Diesel Particulate Filter System in our models. Cleaner, greener driving without taking away from the drive – that's what you can continue to expect from Citroën C4.



## › ELECTRIFYING. HOWEVER YOU LOOK AT IT

Forget what you know about electric cars. Citroën Survolt combines undiluted glamour with advanced sporting dynamics, then adds a 100% electric drivetrain. Outside, LED lights, voluptuous curves, two-tone charcoal and fuchsia paintwork, and a race-inspired rear spoiler meet your gaze. Inside, a stunning blend of curved chrome, swooping glass, high technology and organic forms welcomes you to an entirely new place. But this is no simple styling exercise. At heart, Survolt is even more radical, because although it is designed to thrill, it is powered purely by silent, efficient, clean electricity.

## › AIRDREAM – A BENCHMARK

When it comes to the environment we wanted to show our genuine commitment as well as our profound expertise, so we have devised a benchmarking scheme with the signature 'Airdream'. To qualify for the Airdream signature, vehicles must have an e-HDi engine.

# DRIVE YOUR WAY. GET BEHIND THE WHEEL OF YOUR NEW CITROËN C4, WITH CITROËN'S RANGE OF FINANCE AND INSURANCE PRODUCTS.

## CITROËN FINANCIAL SERVICES

**PURCHASE PLAN**  
Own your vehicle with this flexible package designed to fit your budget.

**ELECT 3**  
A new Citroën car every two or three years with monthly payments structured to suit your budget.

**ELECT 4**  
Enjoy the convenience of a new car without the stress and hassle of ownership.

TO FIND OUT MORE ABOUT CITROËN PRODUCTS AND SERVICES, GO TO [WWW.CITROEN.CO.UK](http://WWW.CITROEN.CO.UK) OR CONTACT YOUR CITROËN DEALER.

FOR BUSINESS USERS

## CITROËN CONTRACT MOTORING

**HIRE PURCHASE**  
A tried and tested finance package that allows you to own your vehicle.

**BUSINESS LEASE**  
An alternative to vehicle ownership that allows you to control your business cash flow and gain tax efficiencies.

**LEASE PURCHASE**  
Own a vehicle with a finance solution that offers ultimate flexibility to complement your business cash flow.

**CONTRACT HIRE**  
A non-ownership finance solution that keeps costs fixed and risks low.

FOR MORE INFORMATION ON CITROËN FLEET AND BUSINESS SALES, PLEASE CALL CITROËN FLEET CONNECT ON 08457 940 940 OR LOOK US UP AT [WWW.CITROEN.CO.UK/FLEET](http://WWW.CITROEN.CO.UK/FLEET)

## CITROËN INSURANCE

**INSTANT COVER**  
To help you drive away your new car without delay, we offer Instant Cover insurance, providing you with 7 days comprehensive car insurance, for free!

**MOTOR INSURANCE**  
Citroën Insurance has been designed specifically for our vehicles. You don't just get repairs you get Citroën expertise, service, quality and parts. So, when the time comes to renew your insurance cover, call Citroën Insurance on 0870 024 2725.

Lines open 8am - 8pm weekdays, 9am - 5pm Saturdays. Max call charge from a BT landline is 8p per minute. Calls from other networks may vary. Alternatively, visit [www.citroen.co.uk](http://www.citroen.co.uk) for more information or to apply online.

Citroën Insurance is underwritten by UK Insurance Ltd which is authorised and regulated by the Financial Services Authority. Citroën Insurance is a trading style of Banque PSA Finance UK of Quadrant House, Princess Way, Redhill, Surrey, RH1 1QA.

# ESSENTIAL CARE. CITROËNS ARE RENOWNED FOR THEIR RELIABILITY – AND THE CITROËN C4 IS NO EXCEPTION.

WITH THE ADDED REASSURANCE OF A WARRANTY, ROUTINE SERVICING AND MAINTENANCE, AS WELL AS 24-HOUR ROADSIDE ASSISTANCE, YOU ARE PROTECTED.

## CITROËN WARRANTY

Every new Citroën car has the benefit of a 3 year\* warranty package, plus a 12 year anti-perforation\*\* warranty and a 3 year paint warranty.

\* 2 years' unlimited warranty. No-fee customer option of 1 year's Dealer provided warranty, only on cars sourced from Citroën UK Limited. Note: Dealer provided warranty is limited to 60,000 miles for cars.

\*\* Against all internal to external perforation to bodywork or underbody.

## CITROËN EXTENDED WARRANTY

With a Citroën Extended Warranty, we offer you the opportunity to continue your care-free motoring for a further 1 or 2 years beyond the 3 year warranty and up to 120,000 miles.

To find out more, contact your Citroën Dealer or call the Customer Contact Centre on 0844 463 3500.

Extended Warranty insurance is underwritten by Pinnacle Insurance Plc which is authorised and regulated by the Financial Services Authority.

## CITROËN ASSISTANCE

For all models except Citroën C6: In response to a free telephone call in the UK, Citroën Assistance brings rapid expert roadside assistance to you in an emergency. It comes free of charge for a full year and operates 24 hours a day in all parts of the UK and Europe. Services include nationwide recovery for both car and passengers, a home call service, replacement vehicle, hotel accommodation and vehicle storage if required. Please note, Citroën Assistance only applies to incidents covered by the new vehicle warranty, and excludes non-vehicle faults, such as running out of fuel, mis-fuelling, loss of keys, lock-ins, road traffic accidents and punctures/wheel changes.

Citroën C6: Citroën Assistance covers all incidents and for a period of 3 years.

Full details are available on request from Citroën UK via [cuk\\_contactcentre@citroen.com](mailto:cuk_contactcentre@citroen.com)

## CITROËN MAINTENANCE

From roadside assistance to replacing wear and tear parts or regular servicing, with Citroën Maintenance you have total peace of mind. For a one-off fee or low monthly payment, our experienced engineers will take care of your Citroën, whatever happens.

To find out more, contact your Citroën Dealer or Citroën Authorised Repairer.

## CITROËN SERVICING

Available up to 1 year from your vehicle's registration date, but before its first chargeable service, a Citroën Servicing Package enables you to pay in advance for your vehicle's servicing needs for 3 years/35,000 miles.

For further information, please contact your Citroën Dealer.

# GLOSSARY

## > e-HDi DIESEL ENGINE

The e-HDi 110 Airdream EGS6 engine is capable of 67.3 mpg and CO<sub>2</sub> emissions of just 109g/km combined with the EGS gearbox. It has a reversible starter-alternator that works in tandem with an e-boosters to provide a seamless Stop & Start function. Going further than other similar systems, the e-HDi's Stop & Start puts the engine into idle mode while decelerating before coming to a complete standstill. This reduces consumption by 15% in urban driving.

## > HIGH-PRESSURE DIRECT INJECTION DIESEL ENGINE

Citroën's HDi diesel engines operate with the fuel under extremely high pressure, enabling microscopically precise injection control. With this level of management it's possible to inject at different times during the same engine stroke allowing total control over the combustion process. This has allowed our engineers to reduce carbon monoxide emissions by 40%, unburned hydrocarbons by 50% and engine particulates by 60%. Fuel consumption is 20% lower than a prechamber diesel engine, resulting in an equivalent reduction in CO<sub>2</sub> emissions.

## > VTi/THP PETROL ENGINE

Part of Citroën's range of state-of-the-art engines, VTi and THP petrol powertrains are friction optimised and benefit from an inlet camshaft variable valve timing system that constantly measures the pressure on the accelerator and precisely regulates the quantity of air entering the cylinders. VTi engines boast advanced variable inlet valve lift and exhaust camshaft variable valve timing systems whilst THP engines are turbocharged. This guarantees outstanding efficiency and allows for immediate response with plenty of low range torque available.

## > ANTI-LOCK BRAKING SYSTEM (ABS)

Computer-controlled braking assistance designed to prevent the wheels from locking under extreme braking. This enables the car to continue being steered and therefore controlled during this braking incident. New Citroën C4's ABS system is further enhanced with EBA and EBD.

## > ELECTRONIC BRAKEFORCE DISTRIBUTION (EBD)

A conventional ABS system cannot account for any of the four wheels wanting to lock more quickly than the others (for example, two of the wheels may be on snow and two on tarmac). EBD reads the deceleration rate of each wheel individually and applies the ABS principles accordingly.

## > EMERGENCY BRAKING ASSISTANCE (EBA)

As drivers we find it difficult to instinctively brake very hard, but this is often what is needed in those rare emergency situations. The EBA system recognises our 'attempt' to brake hard and in combination with the ABS and EBD systems instantly applies the maximum stopping power possible.

## > ELECTRONIC STABILITY PROGRAMME (ESP)

This is computer-controlled traction assistance and is provided primarily through the braking systems. The ESP's control unit constantly compares where the driver intends going (through the position of the steering wheel) with where the vehicle is actually going and, if necessary, makes speed corrections to each wheel individually through braking or engine torque to keep the vehicle 'in line'.

## > ON-BOARD TRIP COMPUTER

New Citroën C4's multi-function on-board trip computer provides you with information at your fingertips. At the touch of a button you can view a range of data like fuel consumption, average speed and mileage possible at your current fuel level.

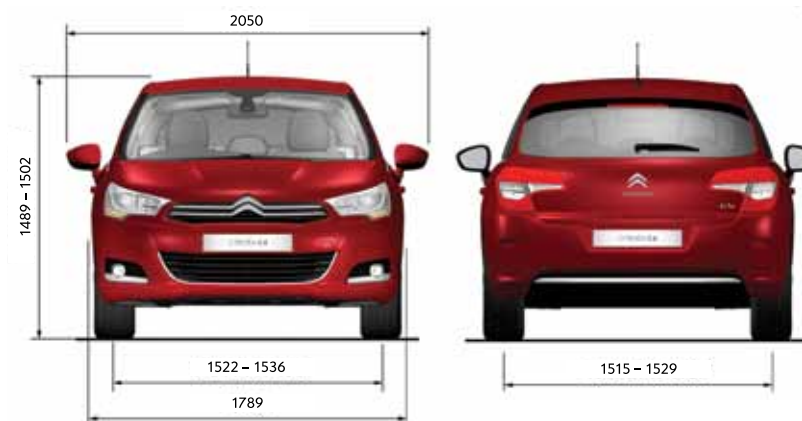
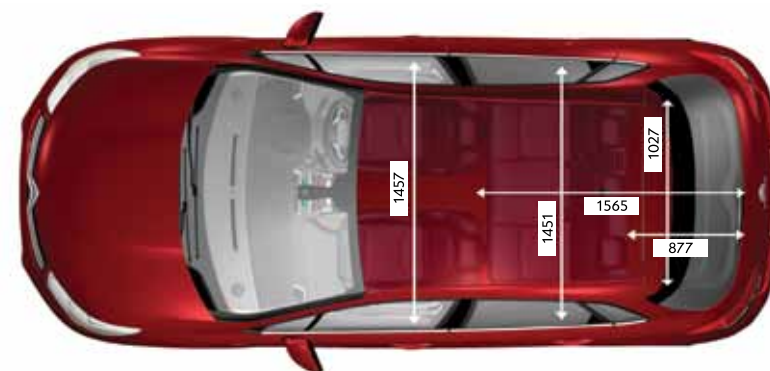
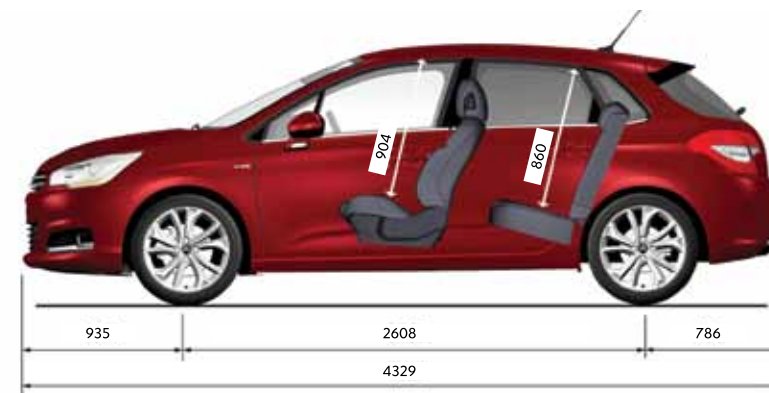
## > FRONT SEAT BELT PRE-TENSIONERS

In the event of a crash, a pre-tensioner will tighten the seat belt almost instantaneously. This reduces the load on the occupant in a violent crash. Like airbags, pre-tensioners are triggered by sensors in the car's body, and use explosively expanding gas to drive a piston that retracts the belt. Seat belt pre-tensioners also lower the risk of "submarining", which is when a passenger slides forward under a loosely worn seat belt.

## > ISOFIX

A standardised and more simple method for installing child seats, each seat is 'clicked' into place via a three point system. On new Citroën C4, Isofix is installed on the outer rear seats.

# DIMENSIONS



All measurements are in millimetres.



This brochure is made from paper from a well-managed forest. Citroën support responsible use of forest resources.

Please don't throw me away, give me to a friend or recycle me.

NOTE: Every endeavour has been made to ensure that the information and details contained in this brochure were accurate at the time of going to press December 2010. However the company reserves the right, whilst preserving the essential characteristics of the models described, to introduce at any time modifications, changes of details, equipment or accessories. Every effort will be made to bring this brochure up to date, but in order to avoid any misunderstandings please consult your Dealer. For full details of Citroën Care for Car and Driver, please see the full manufacturer's price list. The Citroën Website contains full information on all Citroën products and offers available in the UK, together with details of our environmental and recycling policies. The site address is: [www.citroen.co.uk](http://www.citroen.co.uk) or you can contact Citroën directly via [cuk\\_contactcentre@citroen.com](mailto:cuk_contactcentre@citroen.com)

**CITROËN prefers TOTAL**

**CITROËN UK Ltd.** 221 Bath Road, Slough SL1 4BA.  
[www.citroen.co.uk](http://www.citroen.co.uk)

CRÉATIVE TECHNOLOGIE

