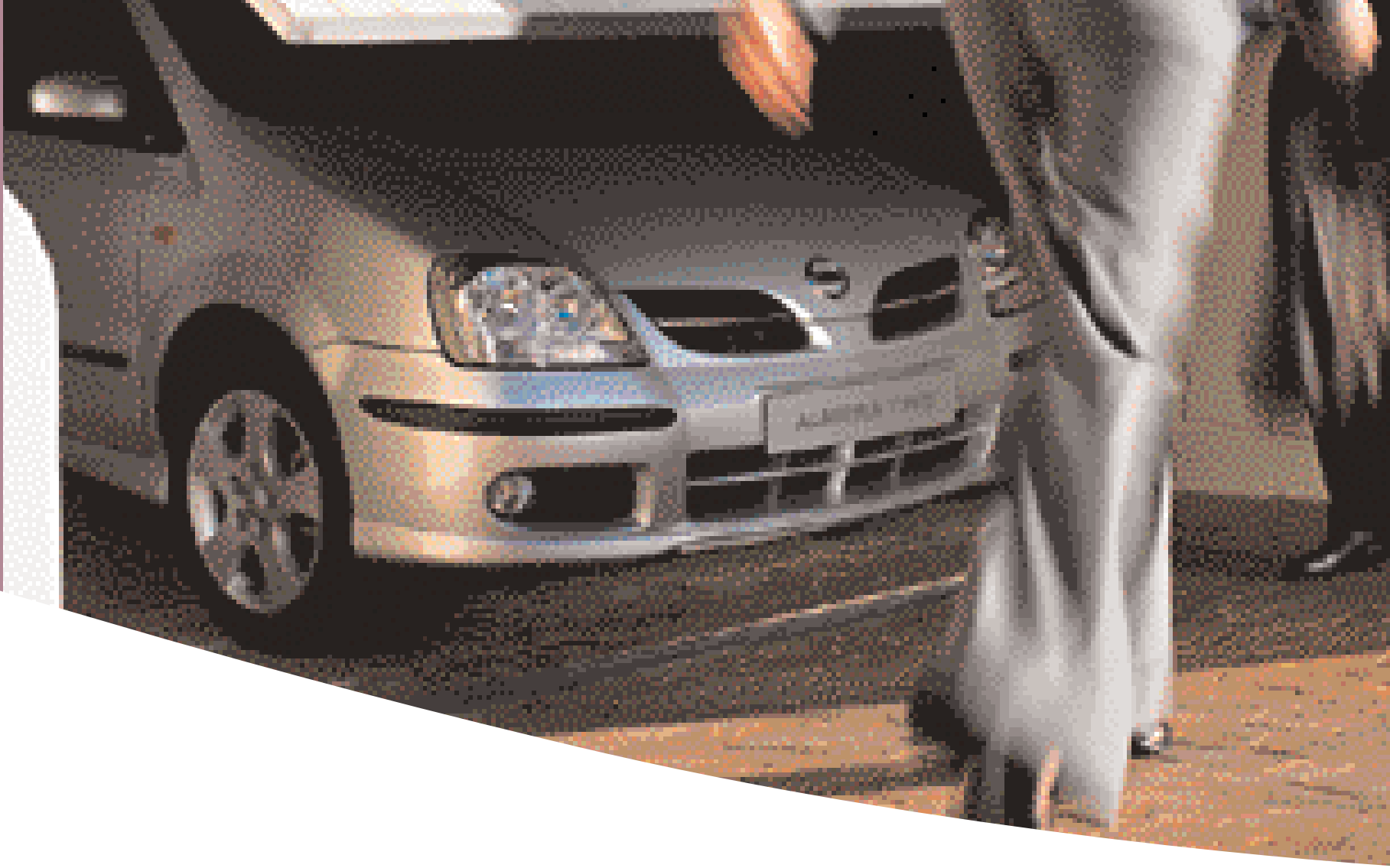


THE NEW ALMERA TINO



□ IT'S MY TURN **TO DRIVE!**



# A CAR FOR YOUR DAY

**Your individuality gives you a character which adapts to the demands and opportunities of each day. At Nissan, we are focused on designing cars which offer that same individuality: cars that are adaptable, personal and have a character that complements yours.**

You can see this approach in our latest concept cars: the luxurious, go-anywhere 4x4 Crossbow, the amazingly versatile and adaptable Yanya and the phenomenal GT-R, a 21st century sports car devoted to driving passion. And now you can enjoy it yourself, with the latest Almera Tino. Designed to be a family car for individuals, the Almera Tino successfully combines space and versatility with smart, innovative styling and a stimulating drive.

## CONTENTS

TEMPTING PROSPECT .04

EXTRA DRIVE .10

FAMILY FAVOURITE .12

PIT STOP .CENTRE SECTION

SAFETY PERFORMANCE .16

GOOD TO BE HERE .20

FINISH LINE .24









# □ CAN'T WAIT TO GET STARTED

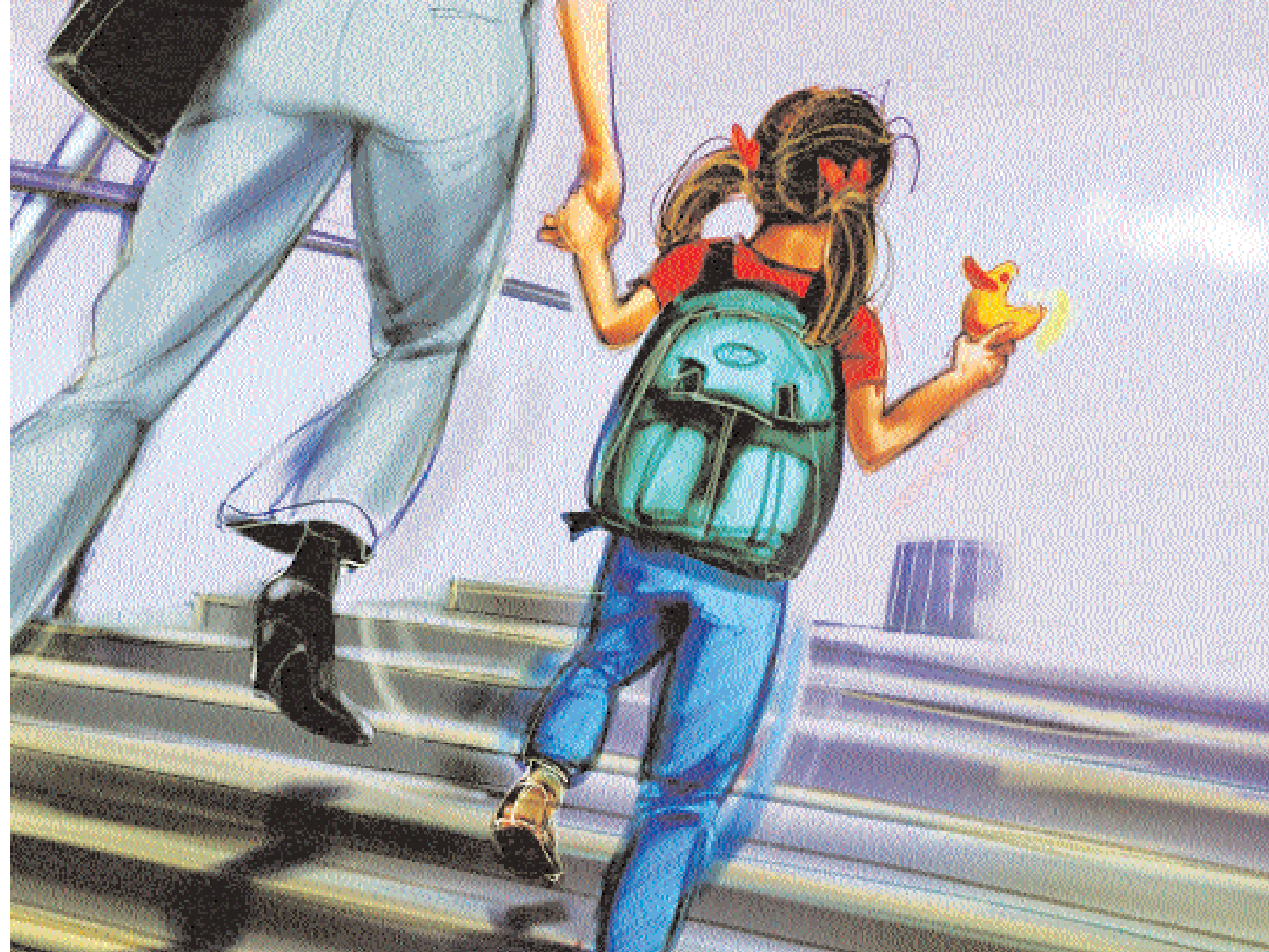
**The Almera Tino breaks through established traditions. It's responsive to drive, good-looking and technically advanced - not at all what tradition says a practical, adaptable safe family car should be. But that's because the Almera Tino takes a very individual approach, as the first family car for individuals.**

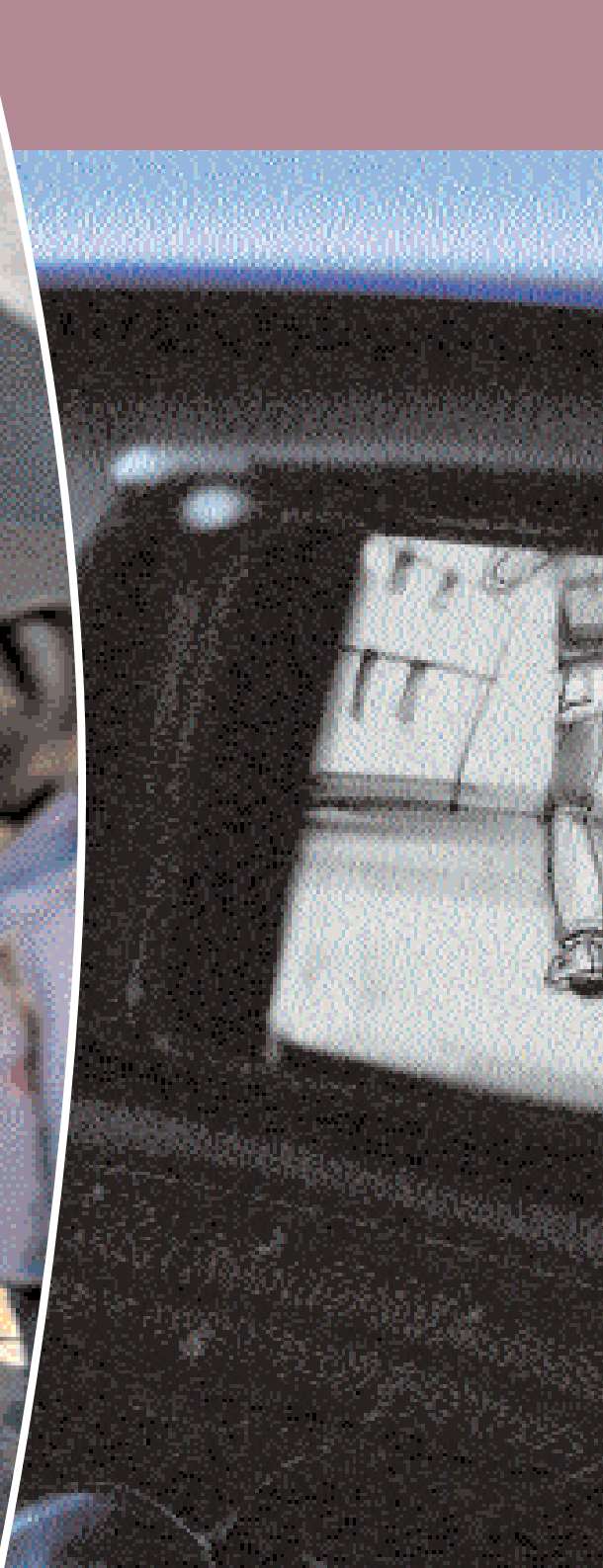
Subtle enhancements to the exterior and interior styling, a new control centre and updated driving dynamics make the Almera Tino more attractive than ever. And the biggest change is under the bonnet: Two new common rail dCi diesel engines, including a 136PS unit that offers the most power in its class, to ensure that once you get started, you won't want to stop.





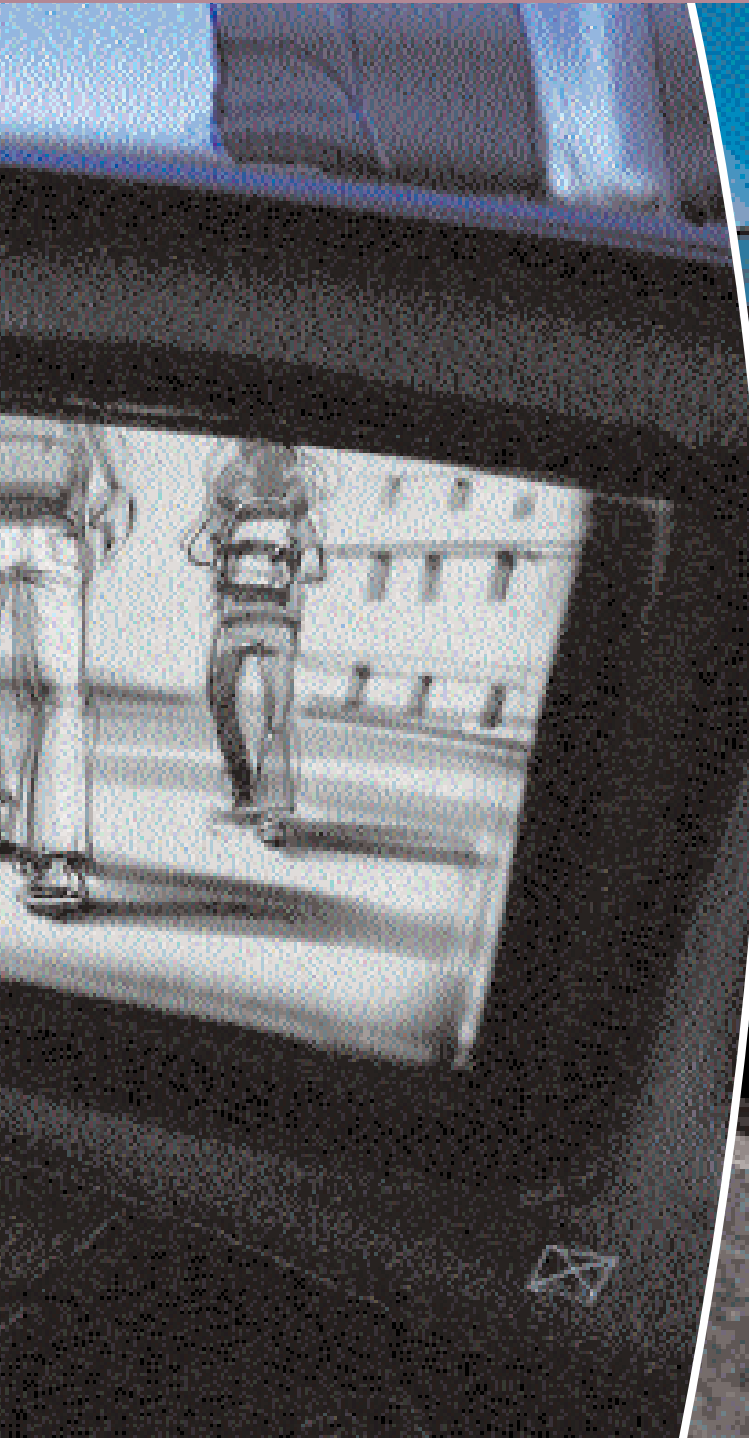








SAFELY ON YOUR WAY



# □ FROM HERE, THE VIEW LOOKS GREAT

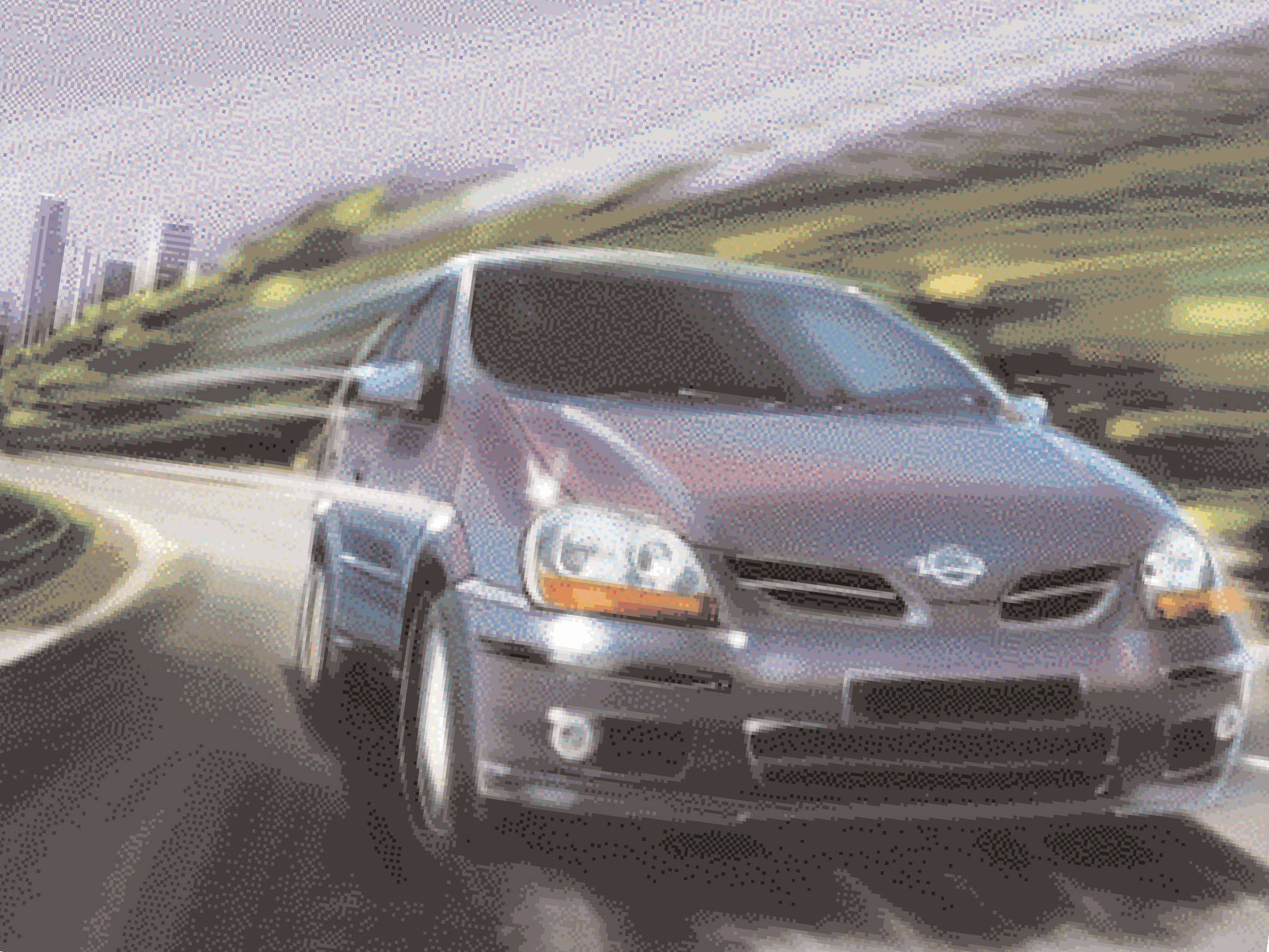
**Every road looks more tempting from an Almera Tino. Elegant new trim patterns make the interior feel sophisticated and refined. And for the driver, there's a new dashboard layout with revised instruments and our ergonomically superior N-Form control panel.**

N-Form groups all the main controls in a logical layout, controlled by a single multi-function switch, to make driving seem more natural and relaxed. Settings for the climate control air conditioning, audio, the drive computer, the rear view parking camera and DVD navigation are displayed on a central colour monitor.





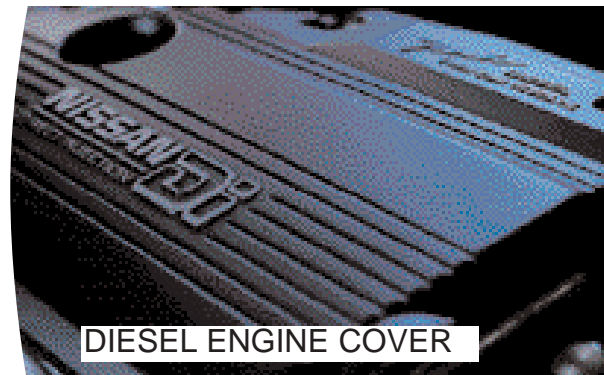




# □ DRIVING IS STILL A THRILL


You're as eager as ever to get out on the road and the Almera Tino gives you good reason to be enthusiastic. The new 2.2 litre turbodiesel engine produces 100kW (136PS) of power and 304Nm of torque; class-leading outputs that perfectly match the six-speed gearbox, to give you smooth acceleration, quiet motorway cruising and impressive flexibility. And there's an 82kW (113PS) version which also features a drive by wire electronic throttle and common rail technology for extra efficiency.

If you prefer a petrol engine, the Almera Tino's 16 valve 1.8 litre is an eager yet refined performer, available with five-speed manual or automatic transmissions.



DIESEL ENGINE COVER



Think of all the activities that go on in your living room. The Almera Tino can comfortably accommodate virtually all of them - and the view from the windows changes too! For your kids it can be a  file games centre with their own 12V power supply in the back (on Acenta and Tekna versions), fold-up tables and storage pockets. For all of you it can be a soothing place to rest, relaxed in five comfortable seats, with 24 different ways to arrange them.

All three rear seats recline or remove independently. The rear centre seat can fold down to make an instant picnic table. Or take it out; then you can move the outer seats sideways, backwards or forwards for optimum personal space or luggage room. With all the rear seats removed, the loadspace is 1.75m long and up to 1.33m wide. And there are lots of intelligent storage areas too - such as compartments in the floor and beneath the rear seats and a drawer under the front passenger seat.

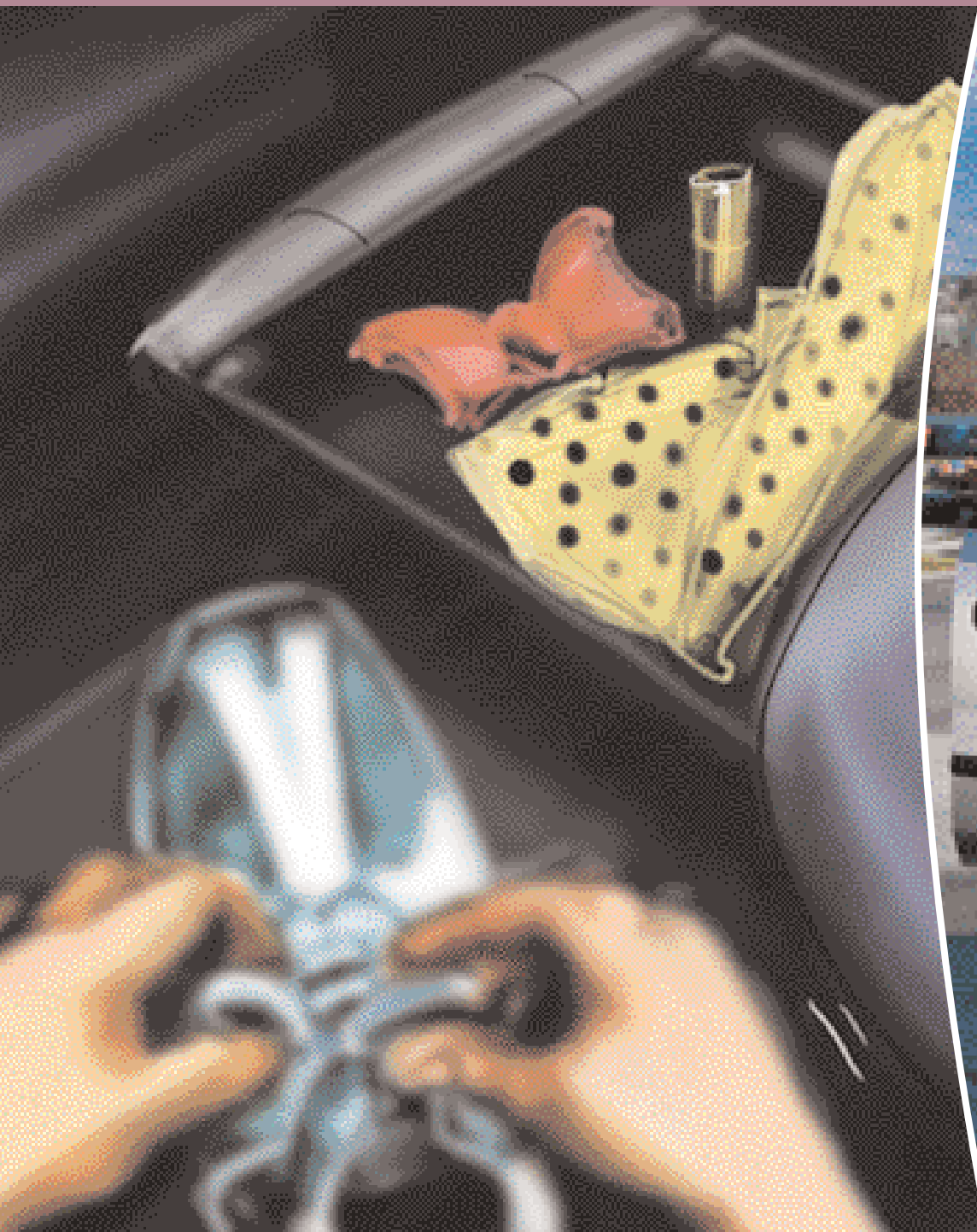






IT'S YOUR **LIVING ROOM**

# DRIVER CHANGE




SAFE DEPOSIT



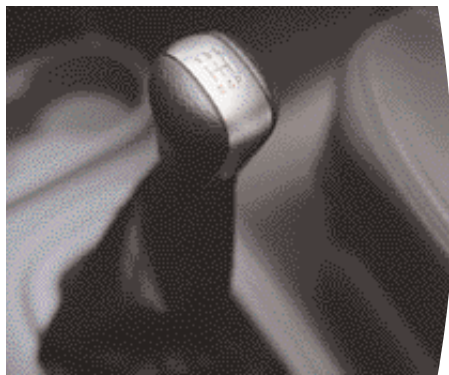


## □ FEEL CONNECTED

**In the Almera Tino, you feel connected with the road. At only 10.6m, the tight turning circle means parking is easy and cornering is fun. As your road speed increases, the power steering 'weights up' to give you a positive and accurate response. Also contributing to the enjoyable handling is a supple suspension system, which provides a ride that's soft enough to absorb bumps yet firm enough to make cornering stable and predictable.**

When you accelerate away from junctions and out of corners, **TCS (Traction Control System)**  **(available with optional ESP+)** moderates engine speed so you can pull away cleanly.

The Almera Tino; it's much more rewarding than you'd expected a family car could be.











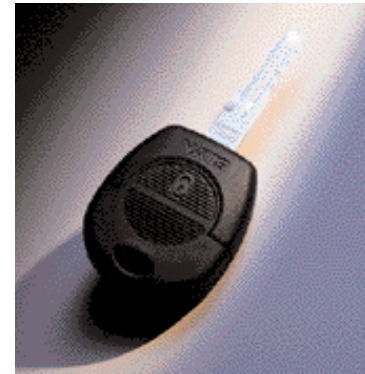
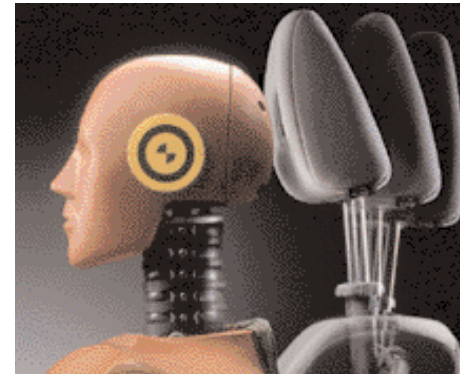




## □ GLAD WE'RE SAFE INSIDE



**Inside the Almera Tino, you're protected by a rigid bodyshell, energy-absorbing crumple zones and doors with anti-intrusion bars. Both front seat occupants have airbags as standard, with the option of side airbags and active headrests, which move forward in a heavy frontal impact to cushion your head and prevent whiplash.**

The front seatbelts include pretensioners and load limiters, which allow the belts to hold you tightly to your seat in an accident without causing you bruising. All three rear seats have three-point inertia reel seatbelts, headrests and, for the outer seats, ISOFIX mountings so you can fit an ISOFIX compatible childseat quickly and securely. And having taken care of you, the Almera Tino looks after itself with its NATS immobiliser system.

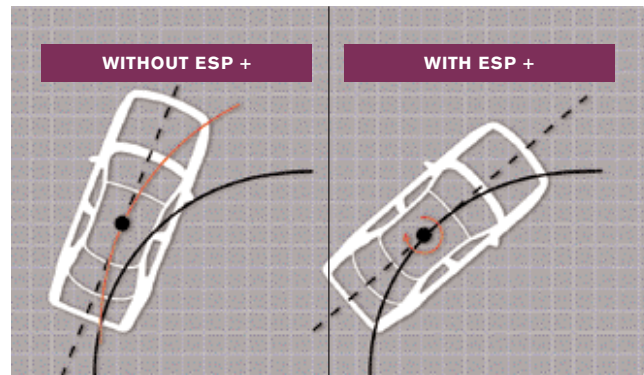




# READY FOR LIFE'S SURPRISES

You can't always foresee why you need to stop quickly, but suddenly you want all the Almera Tino's active safety systems to work for you. ABS stops the wheels locking, so you can steer around obstacles under heavy braking. And if you're cornering on slippery surfaces, the optional ESP+  into action. ESP+ (Electronic Stability Programme)  works with TCS to react in milliseconds, helping you keep to your chosen line.

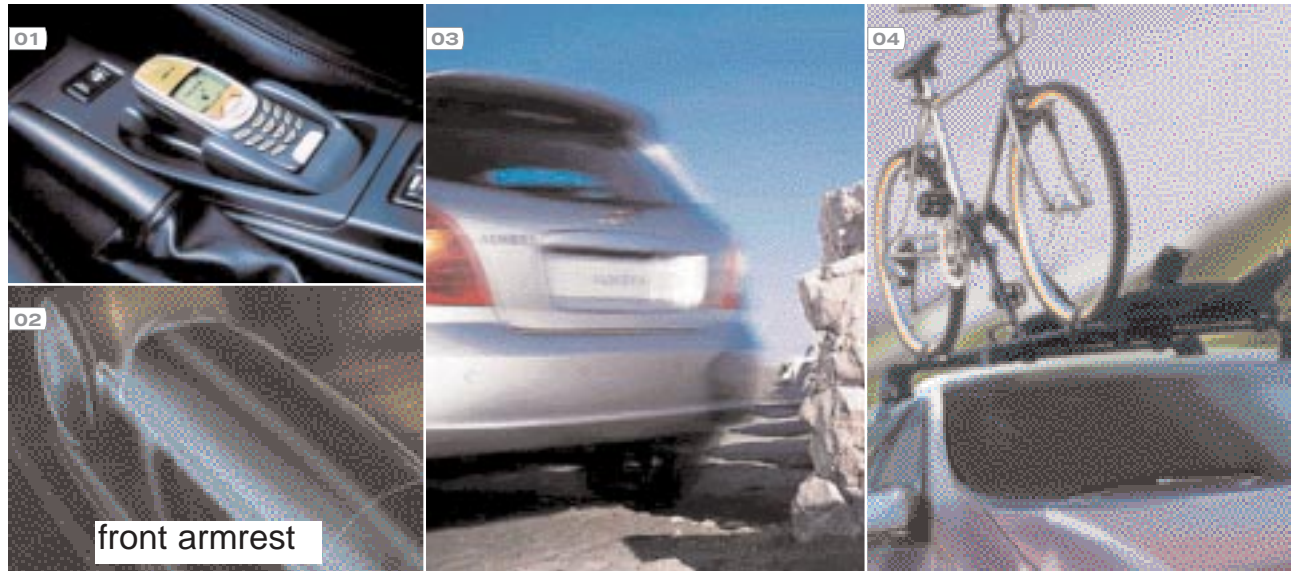
Of course hazards are easier to avoid if you can see them clearly. The Tino's ingenious wiper mechanism ensures 97% of the windscreen is cleaned and together with large windows all round, provides optimum visibility. Then there's the rear view parking camera, which shows on the dashboard monitor what would otherwise be hidden behind you. Working automatically when you engage reverse gear, it's an effective way of avoiding a surprise you'd rather not have.









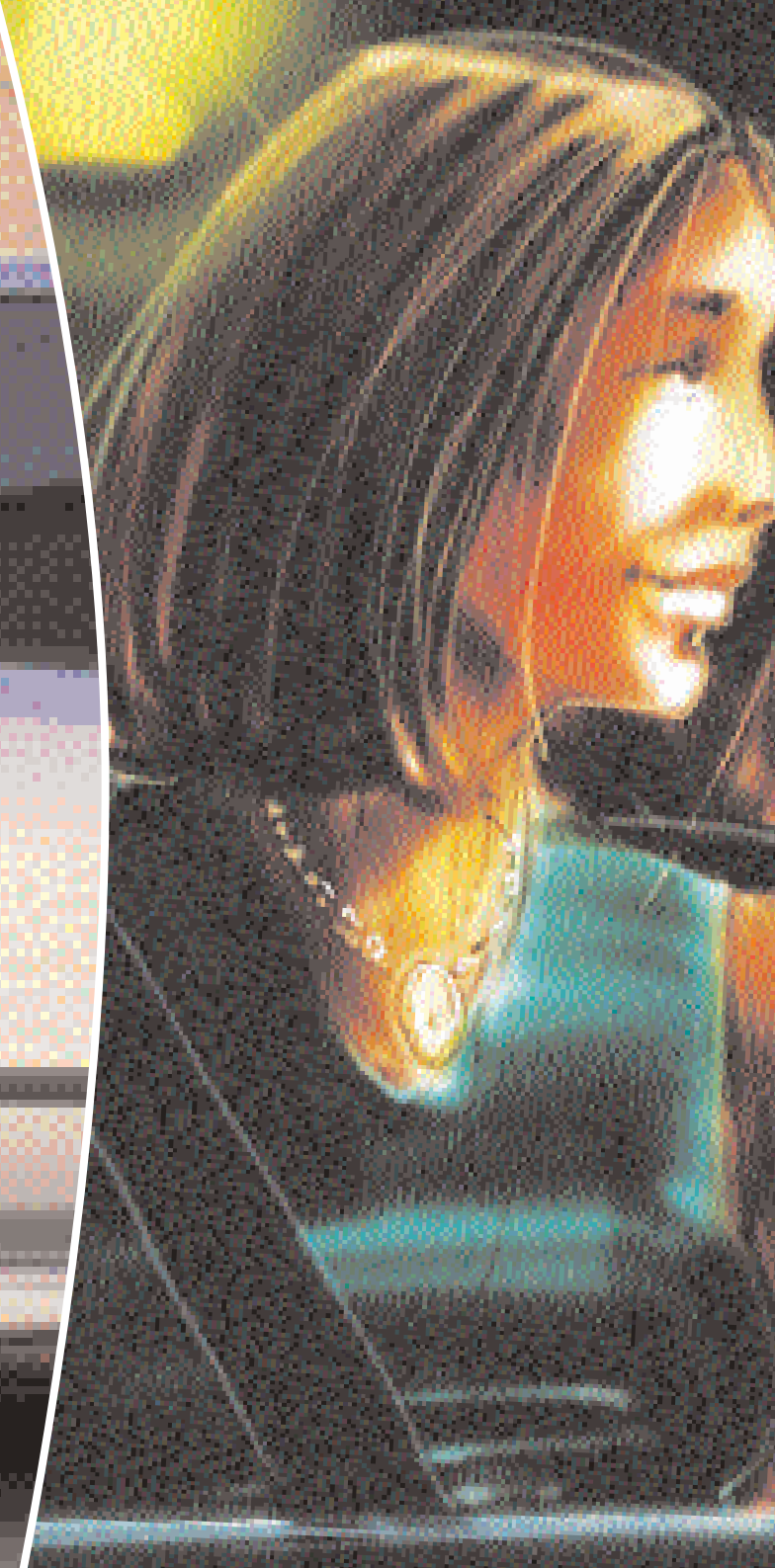
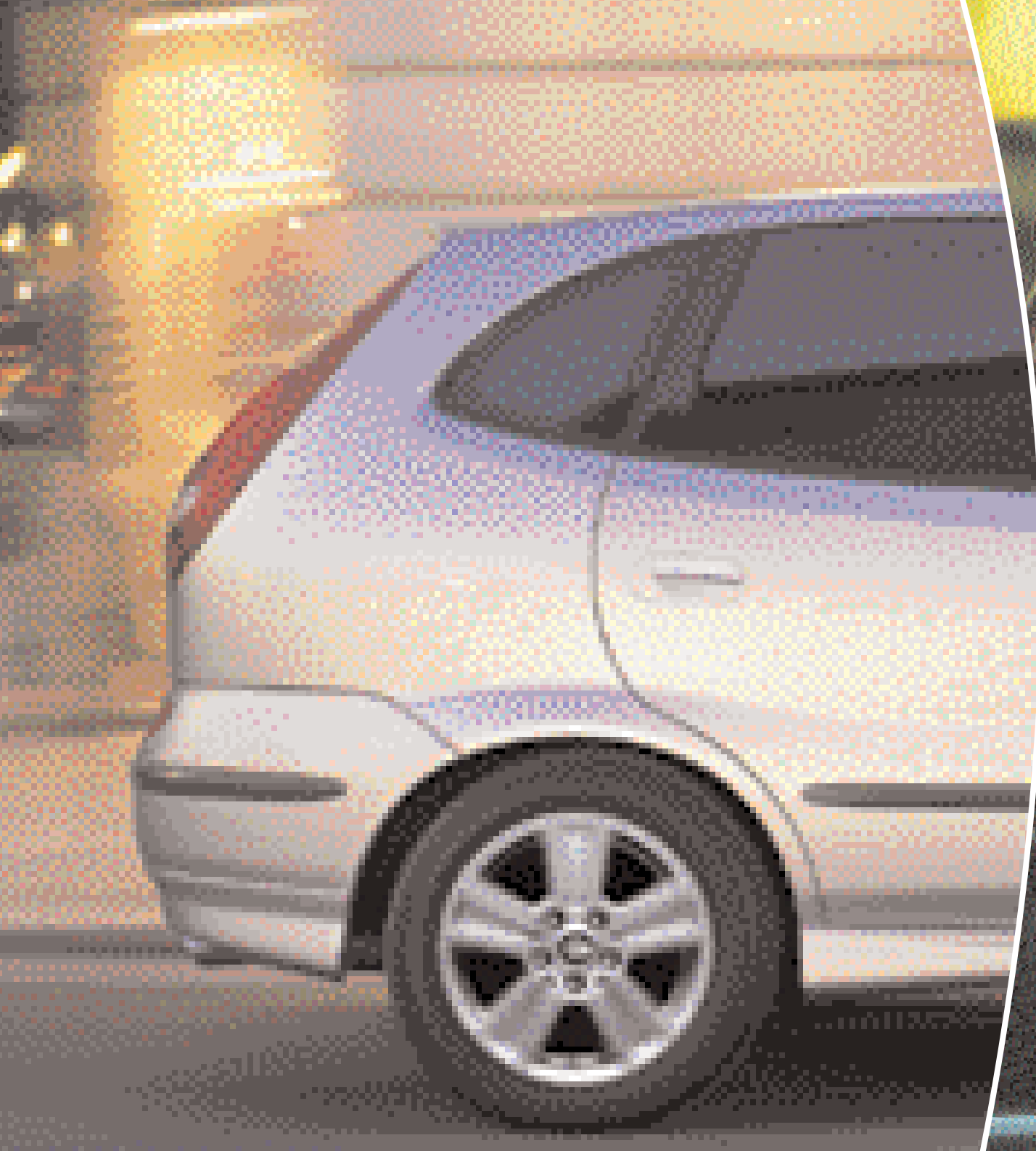


## □ WE LOVE OUR TINO

We've no doubt that the longer you live with your Almera Tino, the more you'll love it. So if you want to shower it with gifts, choose from the extensive range of Nissan Genuine Accessories. Not only do they enhance your Almera Tino's looks, they'll also increase its value, because they're specially designed to fit properly and made to give years of dependable use. And while you're treating your car, treat yourself; there are Nissan Genuine Accessories that will be appreciated by all the loved ones in your family.

- 01 - Hands-free Telephone Kit
- 02 - Front centre armrest
- 03 - Rear park system
- 04 - Loadcarrier with bicycle carrier

**Accessories featured on opposite page:**  
 The Almera Tino accessorised with spoiler, exhaust finisher, 16 inch Lyra alloy wheel and towbar









Every effort has been made to ensure that the content of this publication is correct at the time of going to press (January 2003). This brochure has been produced featuring prototype vehicles exhibited at motor shows. In accordance with the company's policy of continuously improving its products, Nissan Europe reserves the right to change at any time the specification and the vehicles described and shown in this publication. Nissan dealers will be informed of any such modifications as quickly as possible. Please check with your local Nissan dealer to receive the most up-to-date information. Because of the limitations of the printing processes used, the colours shown in this brochure may differ slightly from the actual colours of the paint and interior trim materials used. All rights reserved. Reproduction in whole or part of this brochure without the written permission of Nissan Europe is forbidden.

Dealer Stamp:

Visit our website at:  
**[www.nissan.co.uk](http://www.nissan.co.uk)**

**Nissan Motor (GB) Limited**

The Rivers Office Park  
Denham Way  
Maple Cross, Rickmansworth  
Hertfordshire WD3 9YS



This brochure is made from chlorine-free paper.  
Part number - 01/2003 - printed in France.



Created and produced by Typoweb - France.  
Tel.: +33 1 4746 3939.

**SHIFT\_expectations**