



Mazda2



ZOOM-ZOOM



Fly. In the face of convention

It's a rare pleasure when a new car comes along that defies the norm – flying in the face of convention. The all-new Mazda2 is just such a car.

Displaying an individual style when other cars are looking increasingly alike; lighter and more fuel-efficient when other cars are getting heavier and thirstier; smaller and more agile when other cars are getting larger and more unwieldy: the all-new Mazda2 is proof that avoiding the obvious choice can sometimes be the obvious choice...



Light. Years ahead

The same weight-saving 'gram strategy' that helps Britain's favourite sports car, the Mazda MX-5, perform so well, has been applied to the all-new Mazda2. For example, the bodyshell uses high-tensile steels that make the car quieter, extremely strong and, when combined with numerous other weight-saving measures, lightweight, at less than 1,000kg. This means that whichever lightweight Mazda2 you choose, it will perform better, sip less fuel and produce lower CO₂ emissions.



The power. To move you

The all-new Mazda2 is a true driver's car – so it's available with your choice of responsive 1.3 (75ps), 1.3 (86ps) or 1.5 (103ps) petrol engines – plus an advanced common-rail turbocharged 1.4 (68ps) diesel available early next year. Each of these engines is designed to produce ample torque at low revs, enabling quick getaways from the lights in town driving. They also combine with the all-new Mazda2's light weight to provide agile handling, with accurate responses to your steering and throttle inputs, plus power when you need it for rapid overtaking manoeuvres.

Less weight. More go

Each new generation of 'superminis' is getting larger and heavier. Inevitably, this makes them slower, thirstier and less agile. The all-new Mazda2 is different. It's lighter, making it faster, more fuel-efficient and more fun to drive. It's also got an all-new, lightweight, sports-tuned chassis. So it's quick to react to your inputs – whether from the steering wheel, throttle or brake pedal – making it ideal for nipping in and out of busy city traffic, easier to park and perfect for that spur-of-the-moment country getaway.





Safe. In the knowledge

The all-new Mazda2 has been designed to keep you and your family safe. Dynamic Stability Control* optimises roadholding on slippery surfaces and tight bends, whilst ABS with Brake Assist and Electronic Brake-force Distribution brings you rapidly and safely to a standstill. The lightweight, extremely rigid bodyshell forms a strong defensive cage around those inside. This is complemented by the extra protection offered by crumple zones, driver and front passenger airbags, side and curtain airbags** plus, in the rear, ISOFIX anchorages to help keep your kids safely secured in their child seats. And to protect your car, a Thatcham Category 1 alarm and immobiliser helps deter unwanted attention.

Style. With substance

The all-new Mazda2's blend of sharp contours and soft curves combines with the steeply sloping waistline and distinctive headlights to give the car a sporty, dynamic appearance: even standing still, it looks poised to leap forward. The Mazda2 TS² and Sport models are equipped with stylish alloy wheels and electric folding body-coloured door mirrors, and the Sport model really stands out amongst the crowd with front fog lights, a body-coloured sports grille, side skirts, a sports front bumper as well as a rear sports spoiler.





Everything. In the right place

The all-new Mazda2 is designed to interact with you. So it doesn't just have power steering – it has Electric Power Assisted Steering (EPAS) that feels neither too heavy nor too light, reduces steering effort at low parking speeds and is combined with a quick steering ratio for easy manoeuvring on busy urban roads as well as providing excellent stability at high speeds. Similarly, quick, effortless gearshifts are easy thanks to the high-mounted short-throw gear lever and the front seats aren't merely adjustable – they offer best-in-class adjustability, so you can find the perfect driving position. And you can enjoy the extra convenience of cruise control and a speed alarm in the Sport plus electric folding mirrors and steering wheel-mounted remote audio controls in the TS² and Sport.



Share. The experience

The all-new Mazda2 is first and foremost a driver's car. But that doesn't mean your passengers should have to miss out on all the fun. Quite the contrary in fact, because they can also enjoy the smooth roadholding, comfortable ride quality and ample room to stretch out – plus plenty of space for their luggage. The equipment list is no less impressive, with MP3 capability, a CD player and an AM/FM radio in all models – plus there are extra luxuries like air conditioning* in the TS² and climate control air conditioning in the Sport. There's even an auxiliary jack socket for additional entertainment so you can access all of your music on your MP3 player.

Mechanical Features and Model Availability

Engines:

- 1.3 MZR Petrol
- 1349cc in-line 4-cylinder, 16-valve, DOHC, front-mounted, developing 75ps (55kW) at 6000rpm and 121Nm at 3500rpm.
 - CO₂ emissions of 129g/km (EC Stage IV).
 - Powertrain Control Module (PCM).
 - Battery – 55D23L.

- 1.3 MZR Petrol
- 1349cc in-line 4-cylinder, 16-valve, DOHC, front-mounted, developing 86ps (63kW) at 6000rpm and 122Nm at 3500rpm.
 - CO₂ emissions of 129g/km (EC Stage IV).
 - Powertrain Control Module (PCM).
 - Battery – 55D23L.

- 1.5 MZR Petrol
- 1498cc in-line 4-cylinder, 16-valve, DOHC, front-mounted, developing 103ps (76kW) at 6000rpm and 137Nm at 4000rpm.
 - CO₂ emissions of 140g/km (EC Stage IV).
 - Powertrain Control Module (PCM).
 - Battery – 55D23L.

- 1.4 MZ-CD* Diesel
- 1399cc in-line 4-cylinder, 8-valve, SOHC, front-mounted, developing 68ps (50kW) at 4000rpm and 160Nm at 2000rpm.
 - Common-rail fuel injection.
 - Turbocharger.
 - Powertrain Control Module (PCM).
 - Battery – 80D26L.

Transmissions:

- 5-speed manual – Giving precise, positive shift feel to provide a feeling of unity between driver and vehicle.

Body:

- High-rigidity and torsion-resistant all-steel body with defined crumple zones for the front and rear sections, stable passenger safety cell with side impact reinforcement in the doors.
- Supplementary Restraint System (SRS) comprising central control unit and crush sensors, seatbelt pre-tensioners, load-limiters and front airbags.
- Mazda Advanced Impact Distribution and Absorption System designed to secure the critical interior space in the event of an accident.

Chassis and Suspension:

- Front: Independent suspension with MacPherson struts, lower A-arms, torsion bar.
- Rear: Twist-beam, coil springs, trailing arms.

Brake System:

- Hydraulic, diagonally divided dual circuit system with power brake unit.
- Anti-lock Braking System (ABS) with Electronic Brake-force Distribution (EBD) and Emergency Brake Assist (EBA).
- Front: 258mm ventilated disc brakes.
- Rear: 200mm drum brakes.
- Mechanical parking brake acting on rear wheels.

Model Availability

	TS	TS ²	Sport
1.3 MZR 5-speed manual (75ps)	■	–	–
1.3 MZR 5-speed manual (84ps)	–	■	–
1.5 MZR 5-speed manual (103ps)	–	–	■
1.4 MZ-CD* 5-speed manual (68ps)	■	■	–

■ = Available.

Technical Data

Engine Type	1.3 MZR	1.3 MZR	1.5 MZR	1.4 MZ-CD*
Displacement (cc)	1349	1349	1498	1399
Bore x stroke (mm)	74.0 x 78.4	74.0 x 78.4	78.0 x 78.4	73.7 x 82.0
Valves per cylinder	4	4	4	2
Maximum output [ps (kW) / rpm]	75 (55) / 6000	86 (63) / 6000	103 (76) / 6000	68 (50) / 4000
Maximum torque (Nm / rpm)	121 / 3500	122 / 3500	137 / 4000	160 / 2000
Compression ratio	10.0:1	10.0:1	10.0:1	18.0:1

Transmission

Type		5-speed manual	5-speed manual	5-speed manual	5-speed manual
Gear ratios:	1st	3.416	3.416	3.416	3.583
	2nd	1.842	1.842	1.842	1.925
	3rd	1.290	1.290	1.290	1.281
	4th	0.972	0.972	0.972	0.951
	5th	0.775	0.775	0.775	0.756
	Reverse	3.214	3.214	3.214	3.620
Final gear ratio		3.850	3.850	4.105	3.370

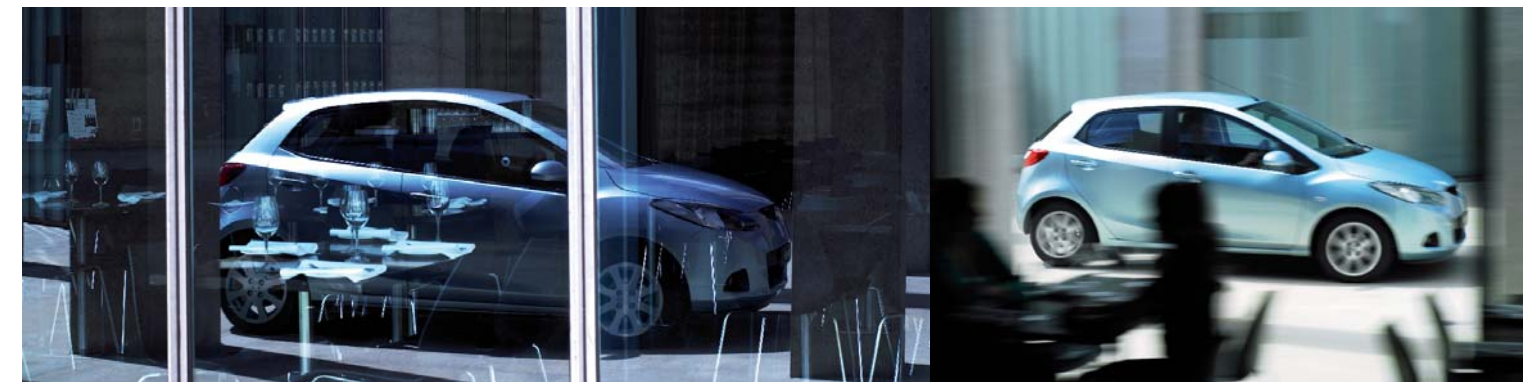
Steering

Steering gear	Power-assisted rack and pinion
Minimum turning circle (kerb-to-kerb radius) (m)	4.9

Performance and Economy

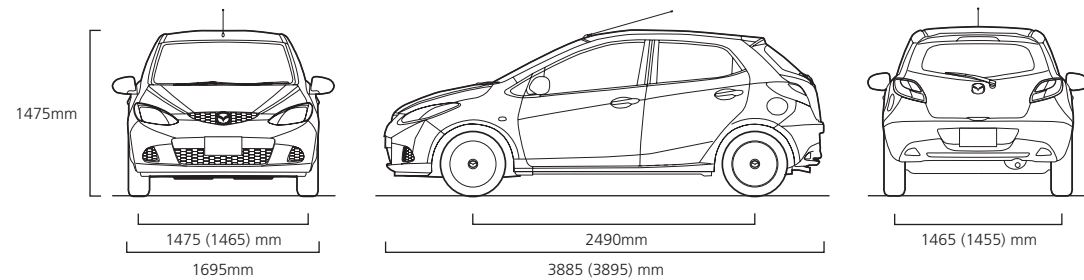
Acceleration [0-62mph (100km/h) in sec]	14.0	12.9	10.4	15.5
Top speed (mph)	104	107	117	101
Fuel consumption ¹⁾ [mpg (l/100 km)]:	Urban	40.9 (6.9)	40.9 (6.9)	37.2 (7.6)
	Extra Urban	61.4 (4.6)	61.4 (4.6)	57.6 (4.9)
	Combined	52.3 (5.4)	52.3 (5.4)	47.9 (5.9)
CO ₂ emissions ¹⁾ (g/km)	129	129	140	TBC
EC emission level	EC Stage IV	EC Stage IV	EC Stage IV	EC Stage IV
Recommended fuel		Unleaded 95 RON		Diesel
Fuel tank capacity (litres)	42.8	42.8	42.8	42.8

¹⁾ Fuel consumption and CO₂ emissions values according to 1999/100/EC.



Technical Data

Dimensions and Weights	1.3 MZR	1.3 MZR	1.5 MZR	1.4 MZ-CD*
Overall length (mm)	3885	3885	3895	3885
Overall width (mm)	1695	1695	1695	1695
Overall height (mm)	1475	1475	1475	1475
Ground clearance between the axles – unladen (mm)	150	150	150	155
Track (mm):				
Front (15" / 16")	1475	1475	1465	1475
Rear (15" / 16")	1465	1465	1455	1465
Wheelbase (mm)	2490	2490	2490	2490
Cargo volume, acc. to VDA (l):				
5-seat mode (to seat back)	250	250	250	250
2-seat mode (to belt line)	469	469	469	469
2-seat mode (to roof)	787	787	787	787
Brakes (mm):				
Ventilated front disc diameter	258	258	258	258
Rear drum diameter	200	200	200	200
Permitted gross vehicle weight (kg)	1480	1485	1485	1521
Towing limit (kg):				
Unbraked	500	500	500	500
Braked (12% gradient)	900	900	900	800
Kerb weight (kg) incl. driver (75kg)	1030	1030	1035	1050
Maximum roof load (kg)	50	50	50	50



(Figures in brackets relate to Sport models.)

Equipment

Safety and Security	TS	TS ²	Sport
Mazda Advanced Impact Distribution and Absorption System engineered 'Triple H' body structure to help protect occupants from impact forces	●	●	●
Supplementary Restraint System (SRS) – Central control unit with crush sensors, seatbelt pre-tensioners, load-limiters and front airbags	●	●	●
Four-wheel Anti-lock Braking System (4W-ABS) with Electronic Brake-force Distribution (EBD) and Emergency Brake Assist (EBA)	●	●	●
Dynamic Stability Control (DSC) and Traction Control System (TCS) (petrol engines only)	○	○	●
Driver and front passenger airbags	●	●	●
Front side and front and rear curtain airbags	–	●	●
Seatbelts:			
Front, 3-point (ELR) with pre-tensioners and load-limiters	●	●	●
Rear, 3-point x3 (ELR)	●	●	●
ISOFIX child seat anchorages	●	●	●
Thatcham Category 1 alarm and immobiliser	●	●	●
Exterior			
Tyres and wheels:			
185/55 R15 tyres on 15" steel wheels with wheelcovers	●	–	–
185/55 R15 tyres on 15" alloy wheels	–	●	–
195/45 R16 tyres on 16" alloy wheels	–	–	●
Temporary spare tyre (Space saver)	●	●	●
Bumpers:			
Body colour, front and rear	●	●	●
Door handles:			
Black	●	–	–
Body-coloured	–	●	●
Heated rear window	●	●	●
Wipers:			
Front and rear, with intermittent wipe and electric wash	●	●	–
Front, with rain sensor	–	–	●
Halogen complex reflector headlights with manual headlight levelling	●	●	●
Automatic headlights	–	–	●
Front fog lights	–	–	●
Sports styling kit with body-coloured sports grille, front sports bumper, side skirts and rear spoiler	–	–	●
High-mounted stop light	●	●	●
Door mirrors:			
Electrically-adjustable, black-coloured	●	–	–
Electrically-adjustable, heated folding mirrors, body-coloured	–	●	●
Metallic / mica paint	○	○	○

● = Standard, ○ = Option, at extra cost.



Equipment

Comfort and Convenience		TS	TS ²	Sport
Remote central door locking (with 'jack-knife' type retractable key) and deadlocking		●	●	●
Power steering		●	●	●
Cruise control: Switches located on steering wheel		–	–	●
Electric windows:	Front, with one-touch auto up and down on driver's side	●	●	–
	Front and rear, with one-touch auto up and down on driver's side	–	–	●
Air conditioning:	Front, manual	○	●	–
	Front, automatic climate control	–	–	●
Sunvisors:	Driver's, with covered vanity mirror and ticket holder	●	●	●
	Front passenger's, with covered vanity mirror	–	●	●
Remote opening fuel cap		●	●	●
Interior Features				
Front seats:	Driver's, height-adjustable with height-adjustable head restraint	●	●	●
Rear seats:	One-piece fold rear bench	●	–	–
	60/40 split rear seats	–	●	●
	Three height-adjustable head restraints	●	●	●
Steering wheel:	Black, urethane	●	–	–
	Black, leather-wrapped with silver inserts	–	●	●
Shift knob:	Black, plastic	●	–	–
	Black, leather-wrapped	–	●	●
Door interior handles:	Front and rear, black	●	●	●
Door switch panel:	Front, silver	–	●	●
Instrument panel outer air vents:	Front, with silver inserts	●	●	●
Grab handles:	Front passenger	●	●	●
Coat hook:	Rear x 1	●	●	●
Audio systems:	AM/FM radio / MP3-compatible / single CD player and AUX jack socket, two speakers	●	–	–
	AM/FM radio / MP3-compatible / single CD player and AUX jack socket, four speakers	–	●	–
	AM/FM radio / MP3-compatible / single CD player and AUX jack socket, six speakers	–	–	●
	Steering wheel-mounted remote audio controls	–	●	●
Instrument panel:	Black facia with white dials	●	●	●
	Tachometer	●	●	●
	Trip computer with speed alarm and exterior temperature gauge	–	–	●
Seatbelt warning light		●	●	●
Centre console, floor-mounted with cup holder		●	●	●
Further storage spaces:	Door pockets with bottle holder (driver and passenger)	●	●	●
	Passenger's glove box with magazine rack	●	●	●
	Rear tray on floor console	●	●	●
	Two instrument panel upper pockets (driver's side)	●	●	●
	Intrument panel lower box (driver's side)	●	●	●
Interior lights:	Header-mounted courtesy light	●	●	●
	Luggage area light	●	●	●
Luggage area cover		●	●	●

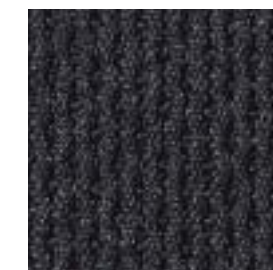
● = Standard, ○ = Option, at extra cost.



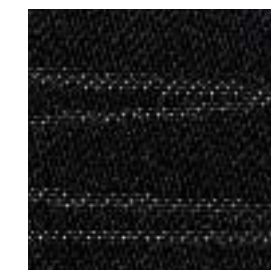
Colours and Seat Trims

Model	TS	TS ²	Sport
Seat trim colour	Charcoal Black	Black	Black
Solid Body Colours			
Brilliant Black	■	■	■
True Red	■	■	■
Mica / Metallic Body Colours*			
Aurora Blue Mica	■	■	■
Golden Red Mica	■	■	■
Golden Yellow Metallic	■	■	■
Icy Blue Metallic	■	■	■
Metropolitan Grey Mica	■	■	■
Spirited Green Metallic	■	■	■
Sunlight Silver Metallic	■	■	■

■ = Available, *Option, at extra cost.



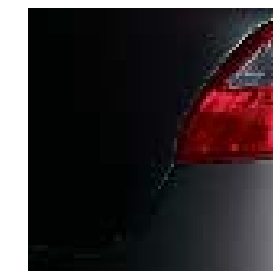
Charcoal Black (TS)



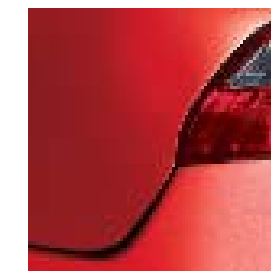
Black (TS²)



Black (Sport)



Brilliant Black



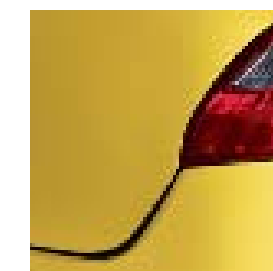
True Red



Aurora Blue Mica



Golden Red Mica



Golden Yellow Metallic



Icy Blue Metallic



Metropolitan Grey Mica



Spirited Green Metallic



Sunlight Silver Metallic



Warranty Plus – 3-Year Cover

Every Mazda is designed and built to the highest standards of performance, comfort and reliability. For your further reassurance, Mazda also provides a full 3-year / 60,000-mile¹ warranty cover, including Mazda European Assistance, 3-year paintwork warranty and a 12-year anti-perforation warranty. ¹There is no mileage limit during the first year of the warranty.

Mazda Momentum – New Vehicle Extended Warranty

At any time during the manufacturer's warranty period, you may purchase a Mazda Momentum extended warranty package. Three options are available. Your Mazda dealer will be pleased to provide you with details.

Mazda Credit*

Mazda offers a variety of finance, leasing and payment protection schemes to suit the needs of both private and business customers. With our wide choice of plans and services, no-one is more committed to delivering complete motoring confidence and total peace of mind than Mazda and Mazda Credit.

Mazda MultiOption – Economical payments protected by any fall in car values, with three options to choose from at the end of the agreement.

Mazda MultiOption Cashplan – All the benefits of MultiOption but with no regular payments.

Mazda Hire Purchase – A simple, straightforward and traditional funding plan.

Mazda Business Partner

As a Mazda corporate customer, you'll find that Mazda vehicles are designed to fulfil the diverse needs of a modern company. Our corporate service offers attractive purchase prices, low running costs and market-driven residual values, resulting in extremely competitive ownership costs.

Mazda Digital Service Record

The Mazda Digital Service Record (DSR) system provides increased security against counterfeit service documents and odometer tampering, and makes it easy to keep the service history up to date. Stored on a central database, the DSR replaces the traditional paper service book and ensures a secure, accurate and permanent service history for the life of the vehicle.

Your Mazda dealer:

Mazda Motors UK Limited reserves the right to introduce changes in specification and equipment due to its ongoing product development. Colour and trim samples shown in this brochure may vary from the actual colours because of limitations in the printing process. It is recommended that you consult your Mazda dealer when referring to these.

*Finance subject to status. Guarantees / Indemnities may be required. Written quotations: Mazda Credit UK, Central Office, Eagle Way, Brentwood, Essex CM13 3AR.

Authorised and regulated by the Financial Services Authority.

August 2007.

Internet: www.mazda.co.uk

Mazda Helpline: 08457 48 48 48