

# NISSAN **QASHQAI+2** ELECTRONIC BROCHURE



Created on 05 February 2009 06:12 (UK time)





## **Exterior and Interior**

**Exterior colours**

**Interior trims**

**Performance**

**Safety and Security**

**Available grades**

**Full equipment list**

**Price Matrix**

**Options**

**Prices**

NISSAN QASHQAI+2

# Exterior and Interior

Fasten your seatbelt!

## INTERIOR



### Easy folding rear seats

Endless possibilities

With so many different ways to separate and fold the seats, QASHQAI+2 gives you an astonishing variety of seating and cargo combinations. And when you fold the 2nd and 3rd row seats down, you have 1520 litres of space, with a long, flat floor for anything you might want to carry.



### Sliding 2nd row bench

The 2nd row seat backs split 40:20:40. And they also recline and slide forwards or back in 60:40 split through 240mm.



### Ingenious cargo divider

The divider flips up to give you even more luggage space. You can also lock the divider upright, so when the 3rd row seats are down, it becomes a partition between load spaces. Push it back down, and it creates a hidden space for small valuable items – while letting you carry large items in the main cargo space.

### Tonneau cover easy storage

Space for everything

Keep your belongings out of sight with QASHQAI +2's tonneau cover. The cover can be stored safely and easily inside the car when you're not using it. So you'll still have space in the boot, even when you're using the third row of seats!

## EXTERIOR



### Emotive design with convenience

Expect the unexpected

Why can't a practical car be inspiring? Why can't an inspiring car be practical? There's no reason, as far as we can see. As a true crossover, QASHQAI +2 kicks out conventions to write its own rules: now tough style, agile responses and true convenience work brilliantly together.



### Glass roof, privacy glass and roof rails

QASHQAI +2 features an even bigger glass roof to bring more of the outside inside. The glass roof, privacy glass and roof rails all come as standard on QASHQAI +2.



### +21cm length VS QASHQAI, but still a urban crossover

The convenient urban crossover

Measuring 21cm more in length than QASHQAI, QASHQAI +2 provides more internal space yet remains compact, muscular and elegantly sleek. More space, 7 seats, more Urbanproof.

# Exterior and Interior

Fasten your seatbelt!



## Front grille

QASHQAI +2's unique front grille provides a sophisticated, sporty feel.

NISSAN QASHQAI+2

# Exterior and Interior

## EXTERIOR COLOURS



Arctic White (S)



Blade (M)



Caffé Latte (M)



Cayman Blue (M)



Faded Denim (M)



Fired Iron (M)



Flame Red (S)



Intense Blue (M)



Pearl Black (M)

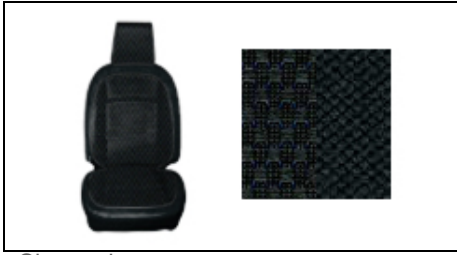


Urban Silver (M)

S=Solid, M=Metallic, PM=Pearl Metallic

# Exterior and Interior

## INTERIOR TRIMS



Charcoal



Chocolate Leather



Graphite



Graphite Leather



Koala



NISSAN QASHQAI+2

# Performance

High performance

## PERFORMANCE



### Powerful 2,0 engines

Fasten your seatbelt!

QASHQAI +2 gets its dynamic handling from powerful aluminium 2.0 140PS petrol or state of the art 2.0 dCi 150PS diesel engines. With six speed gearboxes standard on both engines, the response is exciting yet quiet and refined.



### Manual or automatic gear box

Choose your transmission

Six speed gearboxes come as standard on all engines. If you want to take it easy, there's CVT available with the 2.0 litre petrol (on 4WD versions) and a six speed auto transmission with the 2.0 litre diesel.(on 4WD versions)

## HANDLING



### Have it both ways

Not everyone leads a single-lane life. So why have a single purpose car? QASHQAI +2 is a truly dynamic crossover, offering the driving pleasure of a compact car along with the safety of an SUV.



### Feel the power

QASHQAI +2's spirited engines deliver ample power and torque for secure yet agile handling, ensuring that driving is safe and smooth, yet satisfying and fun.



### Street credibility

QASHQAI +2 has a different kind of elegance. It's assertive, bold, standing tall and looking tough. But it's still a compact car, capable of navigating city streets with ease.

## NISSAN QASHQAI+2

# Performance

	Fuel consumption (mpg)			CO2 Emission Combined (g/km)
	Urban cycle	Extra cycle	Combined cycle	
1.5L 2WD Diesel (5 door hatchback)	41.5	56.5	49.6	149
1.6L 2WD Petrol (5 door hatchback)	31.8	47.9	40.4	165
2.0L 2WD Diesel (5 door hatchback)	33.2	50.4	42.2	177
2.0L 2WD Petrol (5 door hatchback)	25.4	42.2	33.6	197
2.0L 4WD Auto Diesel (5 door hatchback)	28.8	42.8	35.8	209
2.0L 4WD CVT Petrol (5 door hatchback)	25.9	40.4	33.2	199
2.0L 4WD Diesel (5 door hatchback)	31.7	47.9	40.4	188
2.0L 4WD Petrol (5 door hatchback)	24.8	24.8	32.8	188

In accordance with 2004/3/EC optional equipment, driving technique, payload, road and weather conditions may affect actual fuel consumption.



# Safety and Security

Safety first

## PASSIVE SAFETY



### 6 airbags and active headrests

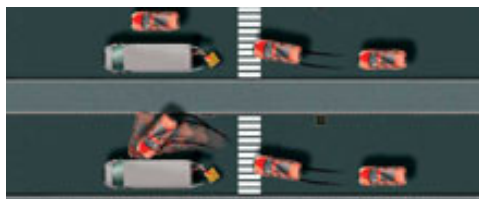
QASHQAI +2 comes with six airbags as standard. For even more intelligent protection, the front seat Active Headrests move forward to reduce the risk of whiplash injury in case of a rear impact.



### Passenger airbag cutoff switch

QASHQAI +2 is ready for everything... even children. Its front passenger airbag can be turned off when a child seat is placed in the front.

## ACTIVE SAFETY



### 8th Generation ESP

QASHQAI +2 is equipped with the latest generation Electronic Stability Program (ESP), keeping you on course. If the car loses grip around a corner, ESP can brake each wheel independently and ease the throttle to rebalance the car. It's so subtle you probably won't realise it's working. But under demanding road conditions, you'll certainly appreciate the benefit.



### Enhanced braking system

Excellent braking

QASHQAI +2 brakes as well as it drives. ABS (Anti-lock Braking System) is supported by HFC (Hydraulic Fade Compensation) which helps increase pressure to ensure ABS is working on all wheels. EBD (Electronic Brake Force Distribution) automatically regulates the pressure between the front and rear brakes for optimum braking. And CBC (Corner Brake Control) works in harmony with QASHQAI +2's electronic stability program to increase stability when braking while cornering.



### Traction Control System

QASHQAI +2's traction control system limits tire slip when the roads are slick. When the system senses that one wheel is spinning faster than the others, it automatically pumps that wheel's brake to reduce its speed and lessen slip.



### SUV security

Truly urbanproof

Qashqai's SUV DNA will keep you feeling confident in any driving conditions. With its high driving position and rock-solid road holding, you'll certainly appreciate the benefits.

NISSAN QASHQAI+2

# Grades & equipment

## AVAILABLE GRADES

### Grade : VISIA

The Visia grade is bold and straightforward, with a simple yet chic interior trim in dark grey. Glass roof, privacy glass and roof rails are all standard. It includes just the right elements to make your city life easier: auto door lock (while driving), electric door mirrors, power windows, trip computer, Bluetooth-compatible audio system and A/C with a low pressure function.

**From £15,495**

### Grade : ACENTA

The Acenta QASHQAI+2 looks extra-sleek with its alloy wheels or body-coloured door mirrors and handles. Inside, touches of chrome highlight the elegant interior. Rain-sensing wipers, automatic lighting, and dual zone A/C with a low pressure function make driving even more relaxing.

**From £16,995**

### Grade : TEKNA

Indulge yourself! The Tekna grade's features the intelligent key, panoramic roof, auto-dimming mirror and a mood lamp make the ride really enjoyable. Outside, 17" alloy wheels with a sleek 5-spoke design add a sporty touch.

**From £18,120**

# Grades & equipment

## STANDARD FEATURES AND OPTIONS BY GRADE

	VISIA	ACENTA	TEKNA
<b>Safety</b>			
Seatbelt warning lamp (driver, passenger and rear)	■		
Remote central locking with Superlocking	■	■	■
Door ajar warning lamp	■		
Engine immobiliser	■		
ESP	■	■	■
Ultrasonic alarm system	■		
ABS with Brake Assist and EBD	■	■	■
Ultrasonic alarm system		■	■
Driver, passenger, side and curtain airbags	■	■	■
Active front headrests with height adjustment	■	■	■
Front seatbelts with load limiter and pre-tensioner	■		
3 rear headrests	■		
5 x 3 point rear seatbelts with ELR	■		
Isofix childseat anchorage points - middle row	■		
Rear door child locks	■		
Halogen clear lens headlamps	■		
Speed-sensitive autolock function	■		
Auto-dimming mirror			■
Xenon clear lens headlamps with headlamp washers			■
<b>Technology</b>			
Remote audio control		■	■
Electric folding door mirrors			■
Audio with Bluetooth compatibility	■	■	■
CD radio with 4 speakers	■		

# Grades & equipment

## STANDARD FEATURES AND OPTIONS BY GRADE

	VISIA	ACENTA	TEKNA
6 CD in-dash auto-changer		■	■
Rain-sensing wipers		■	■
Audio system with 6 speakers		■	■
Auto lighting system		■	■
Cruise control		■	■
Ultrasonic rear park system		■	■
2 speed wiper with variable intermittent	■		
Rear wiper with intermittent	■		
Intelligent key			■
Front and rear power windows with one touch and anti-trap device (driver's side only)	■	■	■
Electrically adjustable and heated door mirrors	■	■	■
Exterior temperature gauge	■		
Low fuel warning lamp	■		
Oil level indicator	■		
Tachometer	■		
Headlamp on warning buzzer	■		
Front 12v power socket	■		
Drive computer	■	■	■
Diesel particulate filter	■	■	■
<b>Interior/Exterior</b>			
14 litre glovebox with lamp and damped opening	■		
17" alloy wheels with locking wheel nuts	■	■	
Front centre console armrest	■		
Body-coloured front and rear bumpers with black protective cladding	■	■	■
Tilt and telescopic steering wheel adjustment	■		

# Grades & equipment

STANDARD FEATURES AND OPTIONS BY GRADE

	VISIA	ACENTA	TEKNA
Two front cupholders	■		
Black door mirrors and handles	■		
Electric speed-sensitive power steering	■		
Sunglasses holder	■		
Satin silver front grille	■		
Door pockets	■		
Body-coloured door handles and mirrors		■	■
Asymmetrical sliding 2nd row bench (40:60 split)	■		
17" alloy wheels with locking wheel nuts			■
450-550 litre boot space (VDA)	■	■	■
Satin silver front grille		■	■
Leather steering wheel		■	■
Leather gear knob (manual only)		■	■
Interior lamp with delay	■		
Panoramic glass roof with one-touch shade			■
Front mood lamp			■
Manual air conditioning with glovebox cooler	■		
Leather upholstery with heated front seats			■
Pollen filter	■		
Height adjustable driver's seat	■		
Dual zone climate control air conditioning		■	■
<b>Portage</b>			
Rear luggage room lamp	■		

Legend

■ Standard

□ Optional

▣ Standard on some grades

# Price list

## PRICE MATRIX

	GRADE	BODY	PRICE VAT incl.	PRICE VAT excl.
1.5L 2WD Diesel	VISIA	5 door hatchback	£16,995	£14,626
1.6L 2WD Petrol	VISIA	5 door hatchback	£15,495	£13,300
2.0L 2WD Diesel	VISIA	5 door hatchback	£18,195	£15,626
2.0L 4WD Diesel	VISIA	5 door hatchback	£19,545	£16,765
2.0L 4WD Auto Diesel	VISIA	5 door hatchback	£20,645	£17,722
2.0L 2WD Petrol	VISIA	5 door hatchback	£16,845	£14,417
2.0L 4WD Petrol	VISIA	5 door hatchback	£18,195	£15,591
2.0L 4WD CVT Petrol	VISIA	5 door hatchback	£19,295	£16,548
1.5L 2WD Diesel	ACENTA	5 door hatchback	£18,495	£15,930
1.6L 2WD Petrol	ACENTA	5 door hatchback	£16,995	£14,604
2.0L 2WD Diesel	ACENTA	5 door hatchback	£19,695	£16,930
2.0L 4WD Diesel	ACENTA	5 door hatchback	£21,045	£18,070
2.0L 4WD Auto Diesel	ACENTA	5 door hatchback	£22,145	£19,026
2.0L 2WD Petrol	ACENTA	5 door hatchback	£18,345	£15,722
2.0L 4WD Petrol	ACENTA	5 door hatchback	£19,695	£16,896
2.0L 4WD CVT Petrol	ACENTA	5 door hatchback	£20,795	£17,852
1.5L 2WD Diesel	TEKNA	5 door hatchback	£19,620	£16,909
1.6L 2WD Petrol	TEKNA	5 door hatchback	£18,120	£15,583
2.0L 2WD Diesel	TEKNA	5 door	£20,820	£17,909



# Price list

## PRICE MATRIX

	<b>GRADE</b>	<b>BODY</b>	<b>PRICE VAT incl.</b>	<b>PRICE VAT excl.</b>
2.0L 4WD Diesel	TEKNA	hatchback 5 door hatchback	£22,170	£19,048
2.0L 4WD Auto Diesel	TEKNA	5 door hatchback	£23,270	£20,004
2.0L 2WD Petrol	TEKNA	5 door hatchback	£19,470	£16,700
2.0L 4WD Petrol	TEKNA	5 door hatchback	£20,820	£17,874
2.0L 4WD CVT Petrol	TEKNA	5 door hatchback	£21,920	£18,830

# Price list

## OPTIONS

	VISIA	ACENTA	TEKNA	Base Price VAT incl.	Base Price VAT excl.
<b>Technology</b>					
Satellite navigation with rear view parking camera (in lieu of ultrasonic rear park system)		<input type="checkbox"/>	<input type="checkbox"/>	£1,325.00	£1,152.17
<b>Services</b>					
Extended Warranty (3 years/100,000 miles)	<input type="checkbox"/>	<input type="checkbox"/>	<input type="checkbox"/>	£529.00	£529.00
Extended Warranty (4 years/60,000 miles)	<input type="checkbox"/>	<input type="checkbox"/>	<input type="checkbox"/>	£379.00	£379.00
Extended Warranty (5 years/60,000 miles)	<input type="checkbox"/>	<input type="checkbox"/>	<input type="checkbox"/>	£509.00	£509.00
Extended Warranty (5 years/80,000 miles)	<input type="checkbox"/>	<input type="checkbox"/>	<input type="checkbox"/>	£719.00	£719.00

Legend

Standard

Optional

Standard on some grades

*PV Price Disclaimer*

*On The Road Price includes VAT, 12 months Government Vehicle Excise Duty (determined by CO2 emissions figure and fuel type and Government First Registration Fee.*

# NISSAN QASHQAI+2 Accessories

## PRICES

	BASE UNIT PRICE VAT incl.	BASE UNIT PRICE VAT excl.	REFERENCE NUMBER
<b>Exterior</b>			
Chrome door sill strips	£161.00	£140.00	KE760-EY000
Rear bumper chrome finisher	£127.65	£111.00	KE545-EY040
Chrome mirror caps	£159.85	£139.00	KE960-JD001
Rear door grip cover	£82.80	£72.00	KE791-EY050
Chromed stainless steel side bars	£519.09	£451.38	KE543-EY010
Front styling plate	£95.61	£83.14	KE540-JD022
Rear styling plate	£111.55	£97.00	KE540-EY042
Roof Spoiler	£181.44	£157.77	KE790-EY020
Mudguards - Front	£28.23	£24.55	KE788-JD185
Mudguards - Rear	£28.23	£24.55	KE788-JD186
<b>Interior</b>			
Hard trunkliner	£186.30	£162.00	KE965-EY5H0
Soft trunkliner	£73.72	£64.10	KE965-EY5S0
Textile trunk mat	£45.08	£39.20	KE840-EY001
Rear entry guard	£110.40	£96.00	KE967-EY530
Front door entry guards	£178.80	£155.48	KE967-EY500
Luxury velour textile mats (set of 6)	£39.15	£34.04	KE755-EY001
<b>Safety</b>			
Front parking system	£255.12	£221.84	KE512-99900
<b>Equipment</b>			
Towbar bicycle carrier	£188.45	£163.87	KE738-70001
Roof Box Atlantis 200	£293.36	£255.32	KE734-AT200

· Prices stated are guide prices only and do not include any labour or painting costs where applicable. · In the case of alloys wheels, new tyres may be required. Any prices quoted do not include the cost of tyres. · Certain accessories may not be compatible with other accessories or standard vehicle specifications and equipment. · Some accessories may require additional parts or fitting kits that are not included in the stated price. Accordingly, you should contact your local authorised Nissan dealer for the most current information.

*General Disclaimer*

*This brochure is for general guidance only and its contents do not in any way constitute an offer or representations by Nissan. While all reasonable efforts have been made to ensure the accuracy of the information provided, due to Nissan's policy of continuous product improvement and testing, all particulars contained are subject to constant revision and Nissan reserves the right to change, alter or modify, among other things, specifications, colours and prices of models and accessories, without any notice at any time. Because of the limitations of the printing processes, the colours shown in this brochure may differ slightly from the actual colours of the paint and interior trim materials used. Accordingly you should consult your local Nissan Authorised Dealer for the exact introduction dates for all models and for the most current information. Reproduction in whole or part of this brochure, without the written permission of Nissan, is forbidden. Nissan Roadside Assistance has been arranged for you by Nissan and is provided by RAC free of charge. Details of the contractual arrangements under which RAC Services are provided to you are available by calling 0870 366 5603. Roadside, Recovery and At Home products are provided by RAC Motoring Services (Registered No 1424399 Registered office RAC House, 1 Forest Road, Feltham, TW13 7RR). RAC Motoring Services (in respect of insurance mediation activities only) is authorised and regulated by the Financial Services Authority and within the jurisdiction of the Financial Ombudsman Service and Financial Services Compensation Scheme. Onward Travel is underwritten by RAC Insurance Limited (Registered No 2355834 Registered office RAC House, 1 Forest Road, Feltham, TW13 7RR). RAC Insurance Limited is authorised and regulated by the Financial Services Authority and within the jurisdiction of the Financial Ombudsman Service and Financial Services Compensation Scheme.*

