

Mazda2
Zoom-Zoom



mazda



"THE HIROSHIMA SPIRIT IS TO NEVER GIVE UP, TO PURSUE EXCELLENCE. TO MAINTAIN A "CAN DO" ATTITUDE."



"WITH A COMPACT, LIGHT ENGINE, A LIGHT BODY AND A BEAUTIFUL DESIGN. WE AIM TO CREATE A NEW STANDARD OF CARS."



"MAZDA WILL CONTINUE TO CHALLENGE, IN ALL OUR PURSUITS. WE'LL ALWAYS DO THINGS DIFFERENTLY."

MASAHIRO MORO
EXECUTIVE OFFICER



FOLLOW THE STORY AT Mazda.co.uk



"DESPITE ADVANCEMENT IN TECHNOLOGY, YOU CAN ONLY GO SO FAR WITH COMPUTERS OR OTHER SCIENTIFIC MEANS. ULTIMATELY, IT DEPENDS ON THE CARMAKER'S SKILL AND SENSITIVITY."

HIROTAKA KANAZAWA
MANAGING EXECUTIVE OFFICER



PULSE-RACING

Vibrant, dynamic and stylish Mazda2 is everything a sports car should be, yet with all the versatility of a compact hatch. It's light but strong. Fun but fuel-efficient. Agile but controlled. We wouldn't have it any other way. Neither should you.



Electronic Power Assisted Steering (EPAS)
With EPAS, the required steering effort is proportional to the speed you are travelling. Minimal effort is needed at low speeds, making Mazda2 easier to manoeuvre. At higher speeds, the steering has less assistance, making it heavier and therefore, very precise, while also enhancing the feeling of stability.

Image shows Mazda2 Sport with optional Aquatic Blue Mica paint.



EYE-CATCHING

Mazda2 exudes style and energy. You can see it in the sleek curvaceous lines, expressing premium sports styling. Mazda2 features a sporty aggressive stance, sharp contours and precise curves. The Mazda2 wants to be driven, it's agile, taut and eager to entertain.

HEAD-TURNING

With Mazda2 fun comes every time you turn the key. And whether you prefer the ease of a 5-door or the sporty styling of the 3-door, you'll need to get used to heads turning as you pass by.



From the nimble 3-door TS to the athletic 5-door Sport – and the models in between – there's a Mazda2 to suit everyone.

5-door

- 1.3 75ps petrol TS Air Con
- 1.3 84ps petrol Tamura
- 1.5 102ps petrol TS² Automatic
- 1.5 102ps petrol Sport
- 1.6 95ps diesel Sport

3-door

- 1.3 75ps petrol TS / TS Air Con
- 1.3 84ps petrol Tamura
- 1.5 102ps petrol Sport



CAR-CONTROLLING

Clearly visible instruments, with a premium touch. Easy-to-reach, intuitive controls. Adjustable, comfortable seats. Electronic Power Assisted Steering (EPAS) for fingertip precision with plenty of feedback. These are sports car essentials – and each is there to be enjoyed in every Mazda2.

Steering wheel-mounted remote controls
Control your audio and cruise control (Sport models only) without removing your hands from the wheel or your eyes from the road ahead.

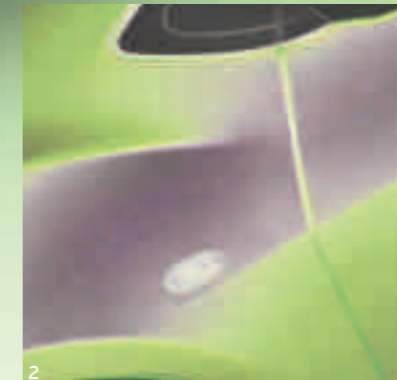
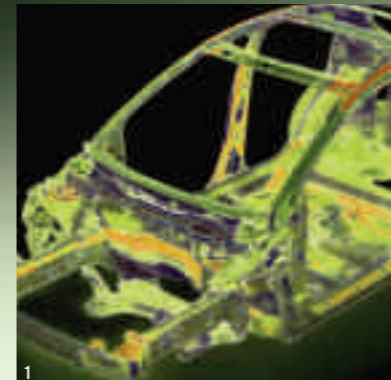
Audio with MP3
With Mazda2, you want to stand out from the crowd – and with the Audio system featuring MP3 playback compatibility, you'll never have to follow the crowd when it comes to music. Mazda2 will take care of everything else.

WEIGHT-REDUCING

Taking a lead from the Mazda MX-5's weight-reducing 'gram strategy', Mazda2 weighs no more than it needs to, through the use of lightweight materials and new technologies. So it's quicker. Stops sooner. Is more nimble. And uses less fuel while producing lower CO₂ emissions.



- 1 Bodysell**
Increased rigidity and strengthened reinforcements all add to the safety of Mazda2. But thanks to smaller dimensions and an optimised body structure, Mazda2 – though stronger – is also very light.
- 2 High-tensile steel**
The use of high and ultra-high tensile steel is combined with precisely calibrated deformation zones to create a body that is both lightweight and strong.
- 3 Suspension**
Optimising the suspension reduces unsprung weight and increases stability for sharper handling and improved ride comfort.



FUEL-SAVING

Mazda2 is proof that 'fun to drive' and 'fuel-efficient' can be combined in one amazing car. Mazda2 engines extract the maximum performance out of every drop of fuel used. Each engine combines impressive performance with incredible fuel economy. How about 0-62mph in 10.7 seconds for the 1.5-litre petrol? Or 67.3mpg* for the 1.6-litre diesel?



LIFE-PRESERVING

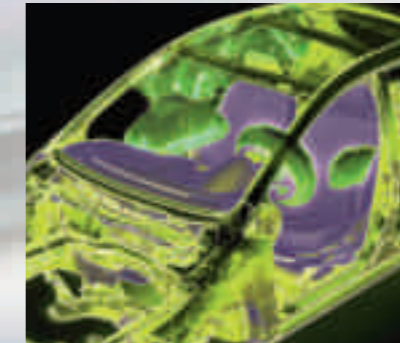
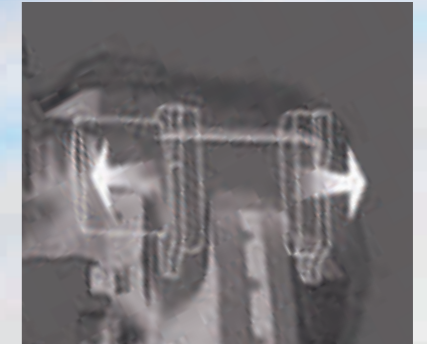
Mazda2's quick responses and superb handling are your best defence when faced with an emergency. But if a collision is unavoidable, Mazda2 helps minimise the potential consequences with the Mazda Advanced Impact Distribution and Absorption System (MAIDAS) which reduces the risk of cabin deformation, keeping Mazda2's occupants protected. And with shock absorbing crumple zones, a rigid passenger safety cell, seatbelts and multiple airbags – all contribute to its Euro NCAP 5-star* adult occupancy rating.

DSC system

Dynamic Stability Control (DSC) enhances driving stability when cornering and during rapid evasive manoeuvres by automatically limiting engine power and applying the brakes on individual wheels, thus maintaining control in situations when the vehicle might otherwise tend to oversteer or understeer.

4W-ABS

Four-wheel Anti-lock Braking System (4W-ABS) with Electronic Brake-force Distribution (EBD) is designed to prevent skidding, helping you to stay in control during emergency braking on wet or snow-covered roads. Surefooted under pressure.



Airbags

Dual front, side and curtain airbags combine with front seatbelt pre-tensioners and load-limiters to significantly reduce the likelihood of injury in a collision.

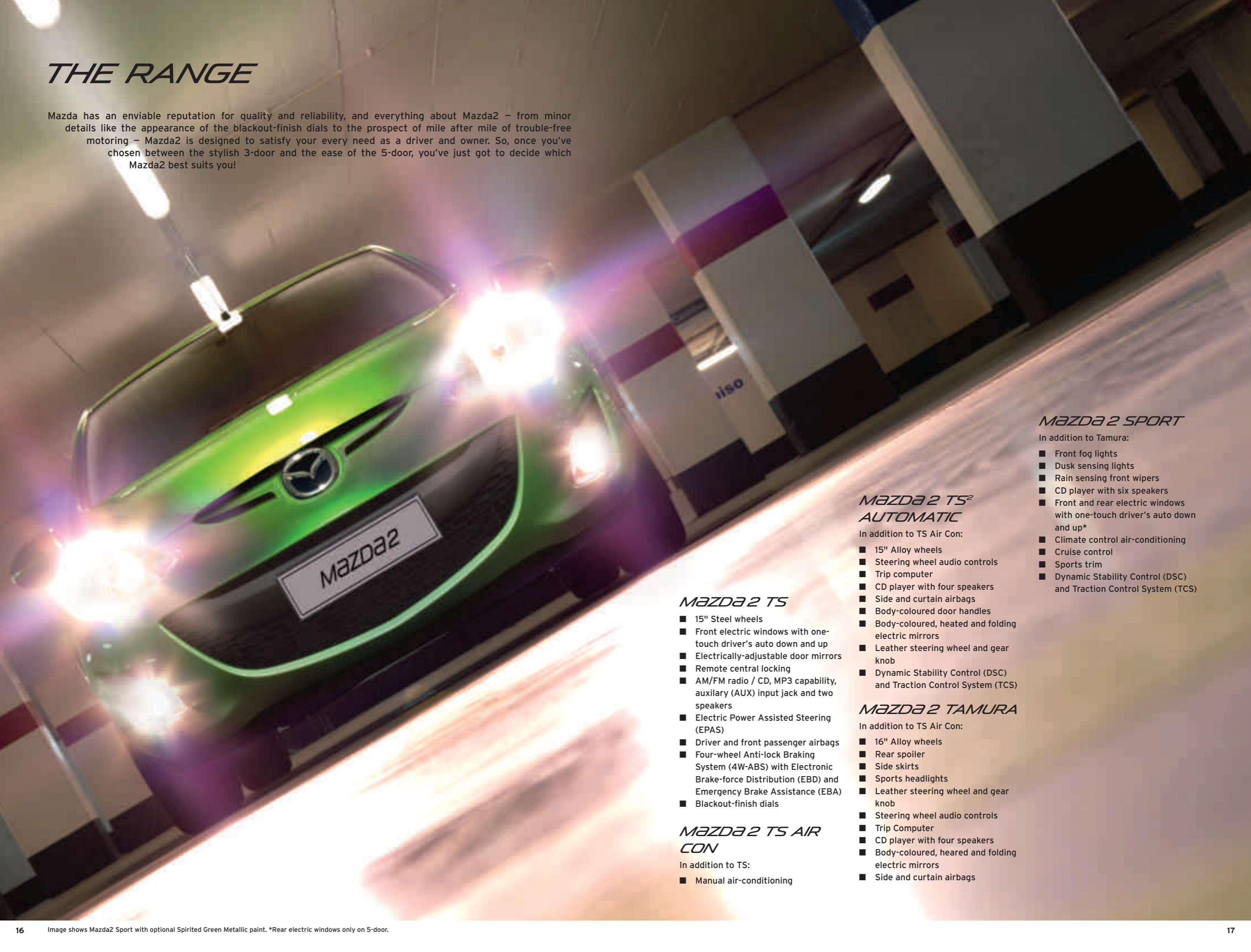
ISOFIX system

The ISOFIX system provides secure anchorage points for child seats. You can quickly attach an ISOFIX seat to ISOFIX anchorages with a simple push-fitting. These anchorages and seat fittings are in a standard location, so any ISOFIX seat can be fitted to any car with the ISOFIX system.



THE RANGE

Mazda has an enviable reputation for quality and reliability, and everything about Mazda2 – from minor details like the appearance of the blackout-finish dials to the prospect of mile after mile of trouble-free motoring – Mazda2 is designed to satisfy your every need as a driver and owner. So, once you've chosen between the stylish 3-door and the ease of the 5-door, you've just got to decide which Mazda2 best suits you!



Mazda 2 TS

- 15" Steel wheels
- Front electric windows with one-touch driver's auto down and up
- Electrically-adjustable door mirrors
- Remote central locking
- AM/FM radio / CD, MP3 capability, auxiliary (AUX) input jack and two speakers
- Electric Power Assisted Steering (EPAS)
- Driver and front passenger airbags
- Four-wheel Anti-lock Braking System (4W-ABS) with Electronic Brake-force Distribution (EBD) and Emergency Brake Assistance (EBA)
- Blackout-finish dials

Mazda 2 TS AIR CON

- In addition to TS:
- Manual air-conditioning

Mazda 2 TS² AUTOMATIC

In addition to TS Air Con:

- 15" Alloy wheels
- Steering wheel audio controls
- Trip computer
- CD player with four speakers
- Side and curtain airbags
- Body-coloured door handles
- Body-coloured, heated and folding electric mirrors
- Leather steering wheel and gear knob
- Dynamic Stability Control (DSC) and Traction Control System (TCS)

Mazda 2 TAMURA

In addition to TS Air Con:

- 16" Alloy wheels
- Rear spoiler
- Side skirts
- Sports headlights
- Leather steering wheel and gear knob
- Steering wheel audio controls
- Trip Computer
- CD player with four speakers
- Body-coloured, heated and folding electric mirrors
- Side and curtain airbags

Mazda 2 SPORT

In addition to Tamura:

- Front fog lights
- Dusk sensing lights
- Rain sensing front wipers
- CD player with six speakers
- Front and rear electric windows with one-touch driver's auto down and up*
- Climate control air-conditioning
- Cruise control
- Sports trim
- Dynamic Stability Control (DSC) and Traction Control System (TCS)

MAKE IT YOURS

It's your Mazda2, so why not really make it yours? Stunning 15" and 16" alloy wheels - combine with our high-quality interior and exterior enhancements to make your Mazda2 truly reflect your personality.



- 1 15" Alloy wheel - design 118 (Accessory / TS² Automatic)
- 2 15" Alloy wheel - design 54 (Accessory)
- 3 16" Alloy wheel - design 144 (Accessory / Tamura / Sport)
- 4 16" Alloy wheel with titanium finish - design 54A (Accessory)
- 5 16" Alloy wheel with matt black finish - design 54B (Accessory)



- 1 Black gloss door mirror housings
- 2 Sports side skirts*
- 3 Chrome exhaust trim
- 4 Rear roof spoiler
- 5 Scuff plates
- 6 Aluminium pedal set and footrest
- 7 Luxury floor mats
- 8 Rear bumper sports trim



- 1 Pioneer multimedia navigation system⁹
- 2 Bluetooth[®] hands-free kit
- 3 Centre armrest with storage
- 4 Boot storage box
- 5 Boot box
- 6 ISOFIX Duo Plus baby seat
- 7 Roof carrier system

MAKE IT YOURS

Hands-free communication to help you stay in touch and satellite navigation to help you stay on course can be combined with storage and transportation enhancements to make your Mazda2 even more enjoyable to live with.



Who are we?

Mazda Financial Services is a division of Santander Consumer, the leading Consumer Finance House in Europe. We provide finance for your Mazda vehicle through your Mazda dealer at competitive rates and insurance products. We are one of the UK's leading 'point of sale' finance providers, which means we enable your Mazda dealer to provide you with a convenient "One-Stop Shop" when choosing your next Mazda. From our wide range of finance plans, there's an option that's right for you, whether you are thinking of a new or used Mazda.

What you can expect from Mazda Financial Services:

- Face-to-face service from trained, plain-talking people at your local Mazda dealer
- Assistance in renewing your car. We'll help you choose the right finance package to enable you to renew your Mazda car as often as you like
- Fixed Interest Rates. The interest rate on your loan is fixed for the duration of the agreement
- Flexible terms tailored to your motoring needs. As specialists in Mazda vehicles, we can tailor a finance package to both your budget and your motoring / ownership needs

Please ask your sales executive for a tailor-made finance quote for your new car.

Mazda Financial Services Finance Plans:

Mazda Conditional Sale:

The traditional way of buying your car. Mazda Conditional Sale is flexible and simple, with a range of options to suit everyone.

The benefits

- Simple – fixed, equal, regular instalments
- Predictable – pay all your instalments and you own the car
- Flexible – you determine your repayment period at the start of your contract, meaning that you have total control of your budget

How it works

1. Choose your Mazda. Tell your dealer the deposit and repayment period you want, from 12-60 months.
2. Agree your repayments. These are based on how much is left to pay, plus interest where applicable.
3. Drive away the moment we activate your agreement.

At the end of your contract, when all instalments have been made, the car is yours. You now have two choices:

- **Renew:** Choose another Mazda. The car is yours; you can part exchange it for another Mazda and use the value as your deposit
- **Retain:** Keep the car. The car is yours once all instalments have been made

Mazda Personal Contract Purchase:

The finance plan that helps you to change your Mazda car at more regular intervals. Enabling shorter term finance agreements, meaning a new car more often.

The benefits

- You can fund your car over shorter periods, so you get the chance to change more often
- The flexibility at the end of the agreement to choose to renew, retain or return your Mazda
- You're protected against any fall in used car prices by an Optional Final Payment (OFP)

How it works

1. Choose any new or used Mazda. Estimate your annual mileage.
2. We estimate the minimum amount your car will be worth once your contract finishes – the OFP.
3. To work out your regular payments, we add any interest charges and deduct your deposit plus the OFP from the price of your new Mazda.
4. Drive away the moment we activate your agreement.

At the end of your contract, when all instalments have been made, you now have three choices:

- **Renew:** Choose another Mazda. Use any excess value above the OFP towards a deposit for another Mazda. You can trade in your car at any time or sell it privately having settled your account
- **Retain:** Keep the car. Simply pay the OFP, and the car is yours
- **Return your car:** There's nothing more to pay if the car's in good condition and within the agreed mileage

Mazda makes cars that excite, look stylish and appealing, are fun to drive and make you want to get behind the wheel again and again. But we are equally committed to the environment, to the creation of a sustainable future for all. This means limiting the Earth's resources that we use and always considering the environmental impact in everything we do.

Our sustainability programme is dedicated to the development of clean technologies. This covers every aspect of a vehicle's impact on the environment – from planning and development, through to manufacturing, use and eventual recycling / disposal. Below are just three examples of how our environmental policies have led to significant advances in 'green' technology.

Plant-derived plastics

Our interior car plastics use carbon-neutral* plant-derived biomass – an industry first.

Benefits:

- Reduces reliance on fossil fuels
- Cuts CO₂ emissions
- Uses sustainable raw materials
- Requires 30% less energy to produce than petroleum-based plastics
- Is three times stronger than conventional bioplastics
- Has 25% higher heat resistance than conventional bioplastics
- Produces lighter, stronger parts improving fuel economy

*CO₂ released when the bioplastic decomposes or is burned is comparable to the amount absorbed by growing plants, having a negligible impact on total atmospheric CO₂ levels.

Semi-dry machining process

Conventional machining of cast metal parts uses huge amounts of water-based coolant to cool and lubricate cutting tools, and remove and collect waste metal. With Mazda's semi-dry machining process, we have substituted large volumes of coolant for tiny quantities of atomised biodegradable oil in a jet of air.

The benefits of semi-dry machining:

- 84% reduction in the amount of coolant required
- Reduced electricity consumption by 40% on machining lines
- 80% cut in waste liquids

Recycling

Mazda has made a substantial commitment to recycling.

- We have reduced waste material in our production facilities by 55% since 1990
- In 1992, we became the first car manufacturer to recycle bumpers
- Over 75% of our plastic parts can be recycled
- All of our gaskets and brake-pads are asbestos-free
- No ozone-damaging CFCs in our polyurethane products (such as the foam padding in seats, armrests and steering wheels)
- Many of our plants have passed the stringent ISO 14001 test – commonly known as the environmental ISO



MECHANICAL FEATURES

Engines:

- 1.3 MZR Petrol 75ps
- 1349cc in-line 4-cylinder, 16-valve, DOHC, front-mounted, developing 75ps (55kW) at 6000rpm and 119Nm at 3500rpm.
 - CO₂ emissions of 115g/km.
 - Powertrain Control Module (PCM).
 - Battery – 75D23L.
- 1.3 MZR Petrol 84ps
- 1349cc in-line 4-cylinder, 16-valve, DOHC, front-mounted, developing 84ps (62kW) at 6000rpm and 121Nm at 3500rpm.
 - CO₂ emissions of 115g/km.
 - Powertrain Control Module (PCM).
 - Battery – 75D23L.
- 1.5 MZR Petrol 102ps
- 1498cc in-line 4-cylinder, 16-valve, DOHC, front-mounted, developing 102ps (75kW) at 6000rpm and 133Nm at 4000rpm.
 - CO₂ emissions of 132g/km.
 - Powertrain Control Module (PCM).
 - Battery – 50D20L.
- 1.5 MZR Petrol 102ps Automatic
- 1498cc in-line 4-cylinder, 16-valve, DOHC, front-mounted, developing 102ps (75kW) at 6000rpm and 133Nm at 4000rpm.
 - CO₂ emissions of 145g/km.
 - Powertrain Control Module (PCM).
 - Battery – 50D20L.
- 1.6 Diesel 95ps
- 1560cc in-line 4-cylinder, 8-valve, SOHC, front-mounted, developing 95ps (70kW) at 3800rpm and 205Nm at 1750-3000rpm.
 - CO₂ emissions of 110g/km.
 - Common-rail fuel injection.
 - Turbocharger.
 - Powertrain Control Module (PCM).
 - Battery – 75D23L.
 - Diesel Particulate Filter (DPF).

Transmissions:

- 5-speed manual – giving precise, positive shift feel to provide a feeling of unity between driver and vehicle.
- 4-speed automatic (only available on 1.5 Petrol 102ps).

Body:

- High-rigidity and torsion-resistant all-steel body with defined crush zones for the front and rear sections, stable passenger safety cell with side impact reinforcement in the doors.
- Mazda Advanced Impact Distribution and Absorption System (MAIDAS) designed to secure the critical interior space in the event of an accident.
- Supplementary Restraint System (SRS) comprising central control unit and crash sensors, seatbelt pretensioners, load-limiters and front airbags.

Chassis and Suspension:

- Front: Independent suspension with MacPherson struts, lower A-arms, torsion bar.
- Rear: Twist-beam, coil springs, trailing arms (torsion beam).

Brake System:

- Hydraulic, diagonally divided dual-circuit system with power brake unit.
- Anti-lock Braking System (ABS) with Electronic Brake-force Distribution (EBD) and Emergency Brake Assistance (EBA).
- Front: 258mm ventilated disc brakes.
- Rear: 200mm drum brakes.
- Mechanical parking brake acting on rear wheels.

MODEL AVAILABILITY AND TECHNICAL DATA

Model Availability		1.3 MZR 75ps	1.3 MZR 84ps	1.5 MZR 102ps	1.5 MZR Automatic	1.6D 95ps
3-door:	TS	■	–	–	–	–
	TS Air Con	■	–	–	–	–
	Tamura	–	■	–	–	–
	Sport	–	–	■	–	–
5-door:	TS Air Con	■	–	–	–	–
	TS ² Automatic	–	–	–	■	–
	Tamura	–	■	–	–	–
	Sport	–	–	■	–	■

■ = Available.

Engine Type

Engine Type	1.3 MZR 75ps	1.3 MZR 84ps	1.5 MZR 102ps	1.5 MZR Automatic	1.6D 95ps
Displacement (cc)	1349	1349	1498	1498	1560
Bore x stroke (mm)	74.0 x 78.4	74.0 x 78.4	78.0 x 78.4	78.0 x 78.4	75.0 x 88.3
Valves per cylinder	4	4	4	4	2
Maximum output [ps (kW) / rpm]	75 (55) / 6000	84 (62) / 6000	102 (75) / 6000	102 (75) / 6000	95 (70) / 3800
Maximum torque (Nm / rpm)	119 / 3500	121 / 3500	133 / 4000	133 / 4000	205 / 1750-3000
Compression ratio	10.0	10.0	10.0	10.0	16.0

Transmission

Type		5-speed manual	5-speed manual	5-speed manual	4-speed automatic	5-speed manual
Gear ratios:	1st	3.416	3.416	3.416	2.816	3.583
	2nd	1.700	1.700	1.842	1.553	1.926
	3rd	1.218	1.218	1.290	1.000	1.281
	4th	0.918	0.918	0.972	0.695	0.951
	5th	0.731	0.731	0.775	–	0.756
	Reverse	3.214	3.214	3.214	2.279	3.615
Final gear ratio		3.850	3.850	4.105	4.147	3.368

Steering

Steering gear	----- Electronic Power Assist System (EPAS) rack and pinion -----				
Minimum turning circle (kerb-to-kerb) (m)	4.9	4.9	4.9	4.9	4.9

Performance and Economy

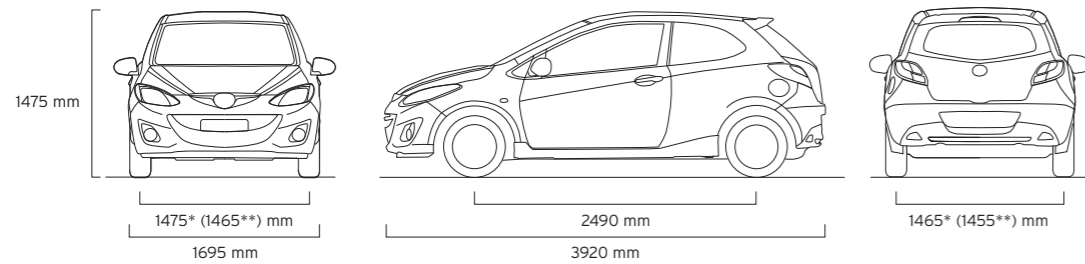
Performance and Economy	1.3 MZR 75ps	1.3 MZR 84ps	1.5 MZR 102ps	1.5 MZR Automatic	1.6D 95ps	
Acceleration [0-62mph (0-100km/h) in sec]	14.9	13.6	10.7	11.9	11.5	
Top speed (mph)	104	106	115	105	108	
Fuel consumption ¹⁾ [mpg (l/100km)]:	Urban	45.6 (6.2)	45.6 (6.2)	38.7 (7.3)	34.9 (8.1)	56.5 (5.0)
	Extra Urban	65.7 (4.3)	65.7 (4.3)	58.9 (4.8)	53.3 (5.3)	76.3 (3.7)
	Combined	56.5 (5.0)	56.5 (5.0)	49.6 (5.7)	44.8 (6.3)	67.3 (4.2)
CO ₂ emissions ²⁾ (g/km)	115	115	132	145	110	
EC emission level	EC Stage V	EC Stage V	EC Stage V	EC Stage V	EC Stage V	
Recommended fuel	----- Unleaded 95 RON -----				Diesel	
Fuel tank capacity (litres)	42.8	42.8	42.8	42.8	42.8	

TECHNICAL DATA

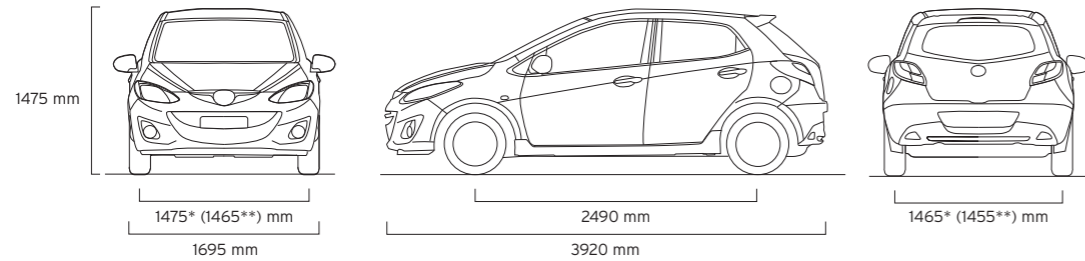
Dimensions and Weights	1.3 MZR 75ps	1.3 MZR 84ps	1.5 MZR 102ps	1.5 MZR Automatic	1.6D 95ps
Overall length / width / height (mm)	3920 / 1695 / 1475	3920 / 1695 / 1475	3920 / 1695 / 1475	3920 / 1695 / 1475	3920 / 1695 / 1475
Ground clearance between the axles – unladen (mm)	150	150	150	150	150
Track (mm):					
Front (15" / 16")	1475	1475 / 1465	1465	1475	1465
Rear (15" / 16")	1465	1465 / 1455	1455	1465	1455
Wheelbase (mm)	2490	2490	2490	2490	2490
Front headroom / leg room / shoulder room (mm)	1004 / 1068 / 1340	1004 / 1068 / 1340	1004 / 1068 / 1340	1004 / 1068 / 1340	1004 / 1068 / 1340
Rear headroom / leg room / shoulder room (mm)	959 / 883 / 1300	959 / 883 / 1300	959 / 883 / 1300	959 / 883 / 1300	959 / 883 / 1300
Cargo volume, acc. to VDA (l):					
5-seat mode (to belt line)	250	250	250	250	250
2-seat mode (to belt line)	469	469	469	469	469
2-seat mode (to roof)	787	787	787	787	787
Ventilated front disc diameter (mm)	258	258	258	258	258
Rear drum diameter (mm)	200	200	200	200	200
Kerb weight (kg) incl. driver (75kg) min.:					
3dr	1030	1035	1040	-	-
5dr	1035	1035	1045	1065	1100
Permitted gross vehicle weight (kg):					
3dr	1455	1455	1460	-	-
5dr	1485	1485	1490	1495	1540
Towing capacity(kg):	12% gradient	900	900	-	800
Maximum roof load (kg)	50	50	50	50	50

Towing capacity is based on a 12% gradient and tested in accordance with 92/21/EEC as amended by 95/48/EC.

3-door (hatchback)



5-door (hatchback)



*With 15" wheels. **With 16" wheels.

EQUIPMENT

Safety and Security	TS	TS ² Automatic	Tamura	Sport
Mazda Advanced Impact Distribution and Absorption System (MAIDAS) engineered 'triple H' body structure to help protect occupants from impact forces	●	●	●	●
Supplementary Restraint System (SRS) – Central control unit with crash sensors, front seatbelt pre-tensioners, load-limiters and airbag system	●	●	●	●
Four-Wheel Anti-lock Braking System (4W-ABS) with Electronic Brake-force Distribution (EBD) and Emergency Brake Assistance (EBA)	●	●	●	●
Dynamic Stability Control (DSC) with Traction Control System (TCS)	-	●	-	●
Driver and front passenger airbags	●	●	●	●
Front side and front and rear curtain airbags	-	●	●	●
Seatbelts:				
Front, 3-point (ELR) with pre-tensioners and load-limiters	●	●	●	●
Rear, 3-point (ELR) x 3	●	●	●	●
ISOFIX child seat anchorages	●	●	●	●
Thatcham Category 1 alarm and immobiliser	●	●	●	●

Additional Safety and Security Options

Child seat:	Britax Römer Baby Safe Plus, for 0-13kg	Please contact your dealer for further information and availability.
	Britax Römer Baby Safe ISOFIX Plus, for 0-13kg	
	Britax Römer Duo ISOFIX Plus, for 9-18kg	
	Britax Römer Kid Plus, for 15-36kg	

Exterior

Tyres and wheels:	185/55 R15 tyres on 15" steel wheels with wheel covers	●	-	-	-
	185/55 R15 tyres on 15" alloy wheels	-	●	-	-
	195/45 R16 tyres on 16" alloy wheels	-	-	●	●
	Space saver spare wheel	●	●	●	●
Bumpers:	Body colour, front and rear	●	●	●	●
Sports styling kit with side airdam skirts and rear spoiler		-	-	●	●
Door handles:	Black	●	-	-	-
	Body-coloured	-	●	●	●
Wipers:	Front, and rear, with intermittent wipe and electric wash	●	●	●	●
	Rain sensing front wipers	-	-	-	●
Headlights:	Halogen	●	●	-	-
	Four cylinder halogen	-	-	●	●
Dusk sensing lights		-	-	-	●
Front fog lights		-	-	-	●
High-mounted stop light		●	●	●	●
Door mirrors:	Electrically adjustable, black-coloured	●	-	-	-
	Electrically adjustable, heated folding mirrors, body-coloured	-	●	●	●

Additional Exterior Options

Tyres and wheels:	See page 18 for wheel options	Please contact your dealer for further information and availability.
Lowering suspension by Eibach		
Bumper:	Front and rear bumper corner protector	
	Side protector	
Front fog lights		
Sports styling kit:	Side airdam skirts	
	Rear spoiler	
Sport exhaust:	By Sebring*	
Park Assist sensor:	Rear acoustic signal	
	Front and rear acoustic signal	

● = Standard, - = Not available; *Petrol models only.

EQUIPMENT

Additional Exterior Options		TS	TS ² Automatic	Tamura	Sport
Roof bar system:	Thule ski / snowboard attachment for four pairs of skis or two snowboards, or for six pairs of skis of four snowboards	●	●	●	●
	Thule bicycle attachment				
	Thule roof box: L x W x H: 175 x 82 x 45cm, volume 450 litres				
Tow bar:	Detachable type	●	●	●	●
	Tow bar harness (available in 7-pin and 13-pin)				

Comfort and Convenience		TS	TS ² Automatic	Tamura	Sport
Remote central door locking (with two 'jack-knife' type retractable keys) and deadlocking		●	●	●	●
Cruise control		-	-	-	●
Power steering		●	●	●	●
Electric windows:	Front, with one-touch auto up and down on driver's side	●	●	●	●
	Front and rear, with one-touch auto up and down on driver's side	-	-	-	●*
Air conditioning:	Front, manual	●**	●	●	-
	Front, automatic climate control	-	-	-	●
Sunvisors:	Driver's, with covered vanity mirror and ticket holder	●	●	●	-
	Driver's and front passenger's, with covered vanity mirror, ticket holder	-	-	-	●

Additional Comfort and Convenience Options		Please contact your dealer for further information and availability.			
Floor mats:	Carpet floor mats 'Standard'				
	Carpet floor mats 'Luxury'				
Sunblinds:	For side rear windows, frame type with fixing kit				
	For rear window, frame type with fixing kit				

● = Standard, - = Not available; *5-door only. **Only available on TS Air Con models.

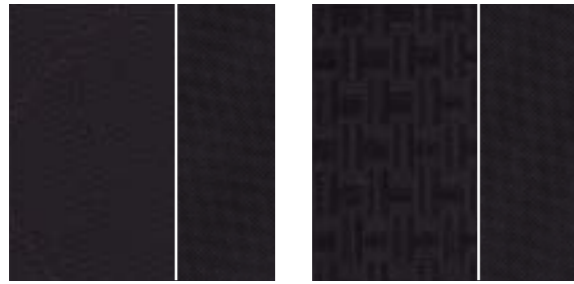
EQUIPMENT

Interior Features		TS	TS ² Automatic	Tamura	Sport
Front seats:	Driver's, height-adjustable with height-adjustable head restraint	●	●	●	●
Rear seats:	One-piece fold rear bench	●	-	-	-
	60/40 split rear seats	-	●	●	●
	Three height-adjustable head restraints	●	●	●	●
Steering wheel:	Black, leather-wrapped with silver inserts	-	●	●	●
	Height adjustment	●	●	●	●
Gear knob:	Black, plastic	●	●	-	-
	Black, leather-wrapped	-	-	●	●
Door interior handles:	Front and rear, black	●	-	-	-
	Front and rear, silver	-	●	●	●
Door switch panel:	Front, silver colour	●	●	●	●
Door trim inserts:	Plastic	●	●	●	-
	Dark cloth	-	-	-	●
Instrument panel outer air vents:	Front, with silver inserts	●	●	●	●
Grab handles:	Front passenger	●	●	●	●
Audio systems:	AM/FM radio / MP3 capability / single CD player and AUX jack socket, two speakers	●	-	-	-
	AM/FM radio / MP3 capability / single CD player and AUX jack socket, four speakers	-	●	●	-
	AM/FM radio / MP3 capability / single CD player and AUX jack socket, six speakers	-	-	-	●
	Steering wheel-mounted remote audio controls	-	●	●	●
Instrument panel:	Trip computer with speed alarm and exterior temperature gauge	-	●	●	●
	Blackout-finish dials with orange illumination	●	●	●	●
Digital clock		●	●	●	●
Centre console, floor-mounted with cup holder		●	●	●	●
Further storage spaces:	Glovebox	●	●	●	●
	Front door pockets	●	●	●	●
Interior light, dome with integral spot light		●	●	●	●
Luggage compartment:	Light	●	●	●	●

Additional Interior Options		Please contact your dealer for further information and availability.			
Armrest:	Black / Silver with storage compartment				
Foot pedals:	Aluminium				
Footrest:	Aluminium				
Gear knob:	Aluminium, leather-wrapped				
Audio system:	AM/FM radio / MP3 compatible 6-CD autochanger				
Satellite navigation					
Further storage spaces:	Cargo storage shelf (below tonneau cover)				
Luggage compartment:	Trunk liner				
	Trunk box, black				
Hands-free kit with voice control and Bluetooth®					

● = Standard, - = Not available.

COLOURS AND SEAT TRIMS



Black cloth (TS, TS Air Con, TS² Automatic, Tamura)

Black Sports cloth (Sport)

Model	TS / TS Air Con	TS² Automatic	Tamura	Sport
Seat trim colour	Black cloth	Black cloth	Black cloth	Black Sports cloth

Solid Body Colours

Brilliant Black* (A3F)	■	■	■	■
True Red (A4A)	■	■	■	■

Mica and Metallic Body Colours*

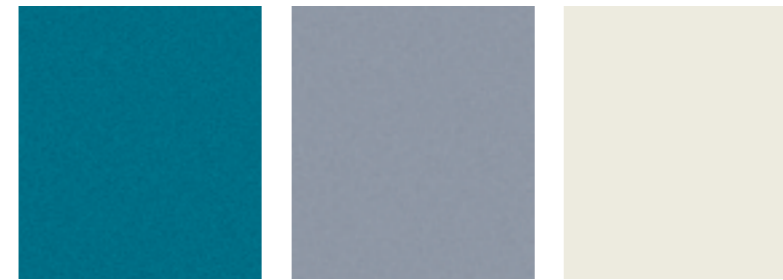
Aquatic Blue Mica (40E)	■	■	■	■
Clear Water Blue Metallic (40B)	■	■	■	■
Crystal White Pearlescent (34K)	■	■	■	■
Metropolitan Grey Mica (36C)	■	■	■	■
Radiant Ebony Mica (28W)	■	■	■	■
Spirited Green Metallic (36A)	■	■	■	■
Sunlight Silver Metallic (22V)	■	■	■	■

■ = Available. *Option at extra cost.



Brilliant Black

True Red



Aquatic Blue Mica

Clear Water Blue Metallic*

Crystal White Pearlescent



Metropolitan Grey Mica

Radiant Ebony Mica

Spirited Green Metallic

Sunlight Silver Metallic



*Available from December 2011 production.

Manufacturer's Warranty – 3-Year Cover

Every Mazda is designed and built to the highest standards of performance, comfort and reliability. For your further reassurance, Mazda also provides a full 3-year / 60,000 mile warranty cover, Mazda European Assistance¹⁾, 3-year paintwork warranty and a 12-year anti-perforation warranty.

Mazda Momentum – New Vehicle Extended Warranty

At any time during the manufacturer's warranty period, you may purchase a Mazda Momentum extended warranty package. Three options are available. Your Mazda dealer will be pleased to provide you with details.

Free Mazda Accident Aftercare

Mazda Accident Aftercare is designed to assist you following a road traffic accident. Should you ever be involved in an accident or need to make an insurance claim. 'Mazda First' will liaise directly with your insurer to process the claim and ensure that your vehicle is repaired at a Mazda approved bodyshop using only genuine Mazda parts, in addition to other benefits such as providing you with a free courtesy car and maintaining your Mazda warranties.

Mazda Contract Hire*

As a Mazda corporate customer, you'll find that Mazda vehicles are designed to fulfil the diverse needs of a modern company. Our corporate service offers low running costs and market-driven residual values, resulting in extremely competitive ownership costs. To find out more about the benefits of Mazda Contract Hire, please speak to your Mazda dealer or phone 0844 600 1410.

Digital Service Record

The Mazda Digital Service Record (DSR) system provides increased security against counterfeit service documents and odometer tampering, and makes it easy to keep the service history up-to-date. Stored on a central database, the DSR replaces the traditional paper service book and ensures a secure, accurate and permanent service history for the life of the vehicle.

Your Mazda dealer:

Mazda Motors UK Limited reserves the right to introduce changes in specification and equipment due to its ongoing product development. Colour and trim samples shown in this brochure may vary from the actual colours because of the limitations of the printing process. It is recommended that you consult your Mazda dealer when referring to these.

¹⁾Please visit www.mazda.co.uk/owning/owner-benefits-new/ for more details on your Mazda European Assistance coverage.

Bose®, the Bose logo, Richbass®, Nd® and AudioPilot® are registered trademarks of Bose Corporation in the U.S. and other countries. Used with permission.

The Bluetooth® word mark and logos are owned by the Bluetooth SIG, Inc. and any use of such marks by Mazda Motor Company is under licence. Other trademarks and trade names are those of their respective owners.

*Mazda Contract Hire is provided by ALD Automotive Ltd, trading as Mazda Contract Hire, Oakwood Park, Lodge Causeway, Fishponds, Bristol, BS16 3JA. Guarantees / Indemnities may be required. Business users only. ALD Automotive Ltd is incorporated in the UK and regulated by the Financial Services Authority in respect of general insurance products.

November 2011.

Internet: www.mazda.co.uk

Mazda Helpline: 08457 48 48 48

