

2023

# IONIQ 5





## The right car. At the right time.

Electric vehicles are no longer just fuel for thought. Not when the EV is the Hyundai IONIQ 5. Then, it's fuel for action – inspired by a fresh, highly functional design that turns heads all over the world. The 2022 IONIQ 5 was named 2022 World Car of the Year by a panel of over 100 international journalists. Here in the U.S., Autotrader named IONIQ 5 the Best New Car of 2022.<sup>1</sup> Now, it's your turn to make IONIQ 5 the car of *your* year.

The first Hyundai engineered to be exclusively all-electric, the IONIQ 5 combines what no EV has before: Ultra-modern design. Ultra-fast charging. Innovative cabin space. And exceptional performance.

With its pixel-inspired light clusters, clamshell hood and automatically extending door handles, one look lets you know IONIQ 5 is like nothing else on the road. Undeniably modern, its design signals a new electric era is beginning – and with it, an entirely new series of all-electric vehicles from Hyundai.

IONIQ 5 uses technologies that optimize your precious time. It's one of the few electric vehicles that can take advantage of a 350 kW DC Fast Charger, which can bring your battery from a 10 to 80 percent charge in just 18 minutes.<sup>2</sup> A full charge can deliver over 300 miles of range<sup>3</sup> – making trips to your favorite campsites a little less remote. Want to bring some creature comforts from home along for the ride? An available Vehicle-to-Load (V2L) two-way onboard charger and accessory external adapter let you power up your TV, e-bike, laptop and latte machine simply by plugging into your car.<sup>4</sup>

Thanks to its purpose-built electric platform, IONIQ 5 also optimizes the amount of room inside the cabin. Not having a gas powertrain allows for a longer wheelbase with a flatter floor, opening up the interior to generous amounts of space. Step inside, and you'll see how the futuristic dashboard and center stack – along with an available sliding center console and wireless charging pad – give you more freedom. And isn't that what energy independence is all about?



**WINNER**  
**2022 WORLD CAR AWARDS**  
WORLD CAR OF THE YEAR  
WORLD CAR DESIGN OF THE YEAR  
WORLD ELECTRIC VEHICLE OF THE YEAR

2022 Hyundai IONIQ 5

<sup>1</sup>For more information, visit Autotrader.com. Autotrader is a registered trademark and used with permission. <sup>2</sup>Charging time for trim levels equipped with a 77.4 kWh battery. Charging rate and time estimate varies based on factors including battery charge level, output of the charging unit, vehicle and battery settings and outside temperature. <sup>3</sup>IONIQ 5 RWD 303-mile range based on a fully charged battery and 114 combined MPGe. MPGe is the EPA-equivalent measure of gasoline fuel efficiency for electric mode operation. All figures are EPA estimates and for comparison purposes only. Actual range and mileage will vary with options, driving conditions and habits, vehicle and battery's condition and other factors. <sup>4</sup>Optional two-way charging will deplete battery and becomes inoperable once battery discharge limit reaches 20%. Not all electrical appliances will operate properly when using this feature. Do not use products that require a continuous power supply. Total power draw should not exceed 1.9 kW.



Goodbye pump.  
Hello plug. Problem solved.

IONIQ 5 gets your commuting costs under control with a 225-hp Rear Wheel Drive powertrain that includes a combined 114 MPGe rating.<sup>1</sup> Want more power underfoot? Opt for All Wheel Drive, and the 446 lb-ft of torque you feel surging from a 320-hp dual-motor system launches you off the line or into a passing lane. You can also choose from four driving modes (Eco, Normal, Sport or Snow) to suit your mood or road conditions.

The speed of its charging is just as impressive: Plug into a 350 kW DC Fast Charger for 5 minutes, and you'll add up to 68 miles to your driving range.<sup>2</sup> Enter a recognized DC fast charging station into the navigation system as your destination, and a battery

preconditioning feature can automatically initiate to warm the battery for quicker recharging in all weather conditions.

An available Premium Head-up Display with Augmented Reality lets you track driving vitals and navigation at a glance. Have some recreational toys you want to bring along for the ride? No problem, thanks to IONIQ 5's 2,300-pound towing capacity.<sup>3</sup> And here's something else to help you go the distance: The lithium ion battery system comes with a warranty of 10 years or 100,000 miles, whichever occurs first.<sup>4</sup>

<sup>1</sup>Ratings for RWD trim levels equipped with a 77.4 kWh battery. MPGe is the EPA-equivalent measure of gasoline fuel efficiency for electric mode operation. Use for comparison only. Mileage may vary with driving conditions, driving habits, the vehicle's condition, the age/condition of the lithium ion battery and other factors. <sup>2</sup>Approximately 5 minutes on a 350 kW Fast Charger for trim levels equipped with a 77.4 kWh battery can provide an estimated driving range of up to 68 miles. Charging rate and time estimate varies based on a number of factors including current battery charge level, output of the charging unit, vehicle and battery settings and outside temperature. <sup>3</sup>Towing capacity with trailer brakes. Towing not recommended for Standard Range RWD. <sup>4</sup>Limited Battery Warranty covers defects in the factory workmanship or materials of the lithium ion battery for 10 years from the date of original retail delivery, date of first use or 100,000 miles, whichever occurs first. Coverage does not apply to lease/commercial vehicles or vehicles serviced or registered outside the U.S. See your Owner's Handbook for details and limitations. <sup>5</sup>Rear Cross-Traffic Collision-Avoidance Assist (RCCA) is designed to notify drivers of approaching cross-traffic behind the vehicle. When another vehicle is detected while you are backing out of a parking spot, it provides audible and visual display warnings and applies braking if it senses a collision is imminent. RCCA is active when your car is in reverse gear at a speed less than 6 mph. It only engages during the first activation of reverse gear from park and may not detect all vehicles. Never rely exclusively on RCCA. Always look over your shoulder and use your mirrors to confirm rear clearance. There are limitations to the function, detection, range and clarity of the system. See Owner's Manual for details and limitations. <sup>6</sup>Remote Smart Parking Assist (RSPA) can help remotely park your vehicle. RSPA may not function correctly if a parking sensor is damaged, dirty or covered, or if weather conditions (heavy rain, snow or fog) interfere with sensor operation. Always inspect the parking area with your own eyes. See Owner's Manual for details and limitations. <sup>7</sup>The Surround View Camera System (SVCS) is a parking support system. The Surround View Monitor cannot completely eliminate blind spots, may not detect every object and does not warn of moving objects. Always check your surroundings before moving your vehicle. See Owner's Manual for details and limitations. <sup>8</sup>Blind-Spot Collision-Avoidance Assist (BCA) warns the driver of other cars in the blind-spot region. If BCA detects an unsafe lane change being attempted, it applies braking on the opposite side of the attempted lane change to help avoid a collision. There are limitations to the function, range, detection and clarity of the system. It will not detect all vehicles or objects in the blind spot and may not operate if sensors are obscured. Do not rely exclusively on BCA. BCA is a supplemental system. It is the driver's responsibility to exercise caution when changing lanes. See Owner's Manual for details and limitations. <sup>9</sup>The Blind-Spot View Monitor (BVM) assists in changing lanes by providing a live view of the blind spots on either side of the vehicle and sounding an audible alert if another vehicle is detected. The turn signal must be activated, and other system limitations apply. Do not rely exclusively on BVM. It is the driver's responsibility to be aware of the surroundings and ensure it is clear before changing lanes or directions. See Owner's Manual for details and limitations. <sup>10</sup>Highway Driving Assist (HDA) is for highway use only and helps keep you centered in your lane while maintaining a safe distance from the vehicle ahead. Lane markings must be clearly visible on the road. HDA should not be used in poor weather, heavy or varying traffic, or on winding or slippery roads. HDA will not work under all circumstances and will not prevent loss of control. Driver remains responsible to slow or stop the car to avoid a collision. See Owner's Manual for details and limitations. <sup>11</sup>Assisted lane change function occurs when the driver operates the turn signal while holding the steering wheel and driving over 37 mph. <sup>12</sup>To qualify for 2022 TOP SAFETY PICK+, a vehicle must earn good ratings in the driver-side small overlap front, passenger-side small overlap front, moderate overlap front, side, roof strength and head restraint tests. It also must earn an advanced or superior rating for vehicle-to-vehicle and vehicle-to-pedestrian front crash prevention and come with standard acceptable- or good-rated headlights. For details visit [www.iihs.org](http://www.iihs.org).

## Drive smarter. Drive safer.

Your IONIQ 5 looks out for your safety in countless ways. Then again, some of the ways can be counted. Like the six airbags located throughout the cabin. And the suite of advanced SmartSense safety features that use cameras, radar sensors and ultrasonic sensors to monitor your surroundings from nearly every angle.

Around town, standard Rear Cross-Traffic Collision-Avoidance Assist<sup>5</sup> and available features like Remote Smart Parking Assist<sup>6</sup> and a Surround View Monitor<sup>7</sup> help navigate your parking maneuvers. On the highway, Blind-Spot Collision-Avoidance Assist<sup>8</sup> is enhanced by an available Blind-Spot View Monitor that displays live video in the instrument cluster from either side of the car.<sup>9</sup>

The innovation doesn't stop there. IONIQ 5's Highway Driving Assist (HDA) helps your cruise control maintain a safe distance from the vehicles detected in front of you, automatically adjusts for changing speed limits and reduces your speed as you approach curves in the road.<sup>10</sup> Available HDA II enhancements respond to vehicles that cut into your lane at low speeds and vehicles that drive too close in the adjacent lane. It can even assist in making lane changes.<sup>11</sup>



2022 Hyundai IONIQ 5 built after December 2021<sup>12</sup>



Premium Head-up Display with Augmented Reality (AR) functions

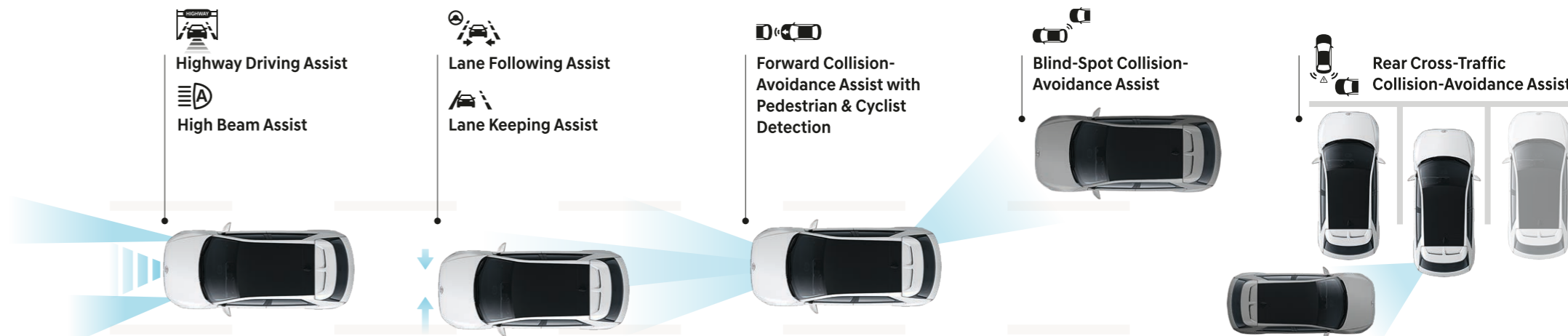


Surround View Monitor



Blind-Spot View Monitor

### Hyundai SmartSense Technologies



Highway Driving Assist  
High Beam Assist

Lane Following Assist  
Lane Keeping Assist

Forward Collision-Avoidance Assist with Pedestrian & Cyclist Detection

Blind-Spot Collision-Avoidance Assist

Rear Cross-Traffic Collision-Avoidance Assist



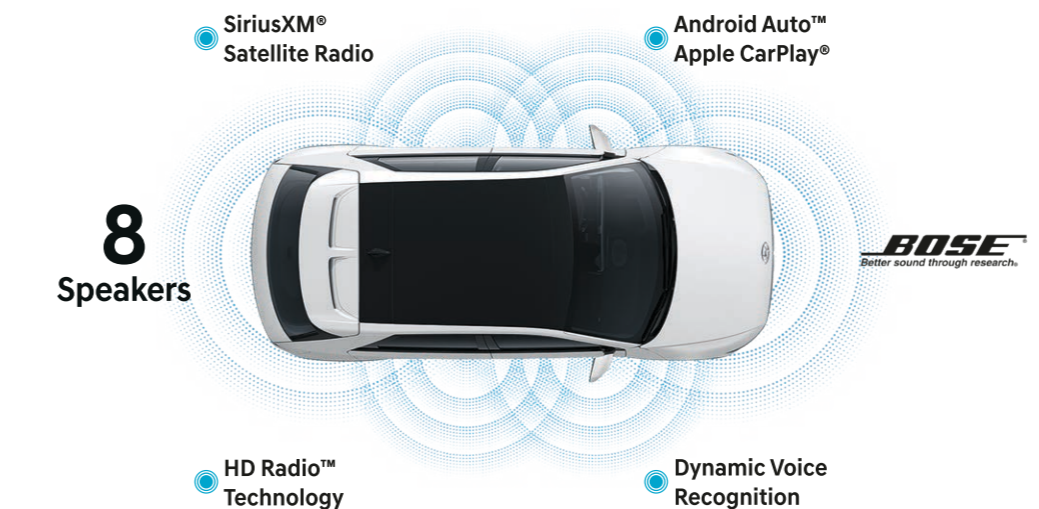
IONIQ 5 Limited in Light Gray H-Tex™ with Gray Trim

## So much room. So little clutter.

IONIQ 5's flat floor creates so much interior space, it almost feels like you're sitting in your living room. In fact, IONIQ 5 has more room for you and your passengers to spread out than any vehicle in its class.<sup>1</sup> Along with more passenger space, there's more cargo room. And enough space on the dash for two 12.3" high-definition display screens – one for the instrument cluster, the other for navigation and infotainment.

But what's roominess without comfort? Check out the supple feel of IONIQ 5 SEL and Limited's H-Tex™ leatherette-trimmed seating. Hyundai designers also found innovative ways to help you relax. The driver seat is available with a reclining Relaxation Function that supports your legs while you rest. The front seatback design is slimmer to allow more space for 2nd-row passengers. Those 2nd-row seats feature reclining seatbacks and also slide – or fold down to dramatically increase cargo space. Dual USB charging ports and an available Vehicle-to-Load (V2L) two-way charger beneath the 2nd-row seats ensure power is available throughout the cabin for your digital devices and larger electronic items.<sup>2</sup>

Between the front seats, IONIQ 5's center console is like a floating island. To create more freedom of access, there's an available sliding feature that moves it back and forth. The center armrest's big surface area opens to reveal a storage tray and raises for improved access to a larger storage compartment – perfect for handbags. Dual cupholders and an available wireless charging pad<sup>3</sup> offer added convenience, while an available glass Vision Roof expands your sense of spaciousness.



Remote Smart Parking Assist



Vision Roof



Vehicle-to-Load (V2L) two-way onboard charger



60/40 split-folding 2nd-row seats with recline & slide



12.3" instrument cluster & touchscreen displays

<sup>1</sup>Claim based on comparison of specifications on manufacturer websites. <sup>2</sup>Optional two-way charging will deplete battery and becomes inoperable once battery discharge limit reaches 20%. Not all electrical appliances will operate properly when using this feature. Do not use products that require a continuous power supply. Total power draw should not exceed 1.9 kW. <sup>3</sup>Qi wireless charging function is based on smartphone compatibility and/or specific accessory cases.



IONIQ 5 Limited AWD in Cyber Gray

# Turns out the key to happiness isn't actually a key. It's an app.

What Hyundai offers its owners goes beyond our award-winning vehicles. It also includes Bluelink,<sup>®</sup> a range of innovative technologies that enable remarkable connectivity between you and your IONIQ 5.<sup>1</sup>

With the MyHyundai app, you can remotely start your IONIQ 5 and adjust climate controls from your office or kitchen using your smartphone, Amazon Echo<sup>®</sup> or Google Home<sup>™</sup> virtual assistant.<sup>2</sup> You can also remotely activate front seat heating or available ventilation, and check to see if you've left a window open, by consulting your smartphone.<sup>3</sup>

Download the available Hyundai Digital Key app to your compatible Android<sup>™</sup> smartphone, and you can use it to unlock the front doors and turn on your vehicle. You can also assign digital keys to multiple drivers, who can instantly retrieve their personalized radio presets, instrument cluster display preferences and driver seat settings.<sup>4</sup>

Every IONIQ 5 comes standard with Apple CarPlay<sup>®</sup> and Android Auto,<sup>™</sup> and you can now connect two phones to the audio system simultaneously via Bluetooth<sup>®</sup> streaming.<sup>5</sup> Good to know you can easily keep your digital devices powered up, too. A wireless charging pad is available, and five USB-A ports (3 up front and two in the 2nd row) are standard.



Hyundai Digital Key



Apple CarPlay



Wireless device charging

## Bluelink



### Automatic Emergency Assistance

Bluelink Connected Care offers 24/7 SOS Emergency Assistance as well as Automatic Collision Notification that calls for help if you're in an accident where your vehicle's airbags deploy.<sup>6</sup>



### Remote Charge Access

You can control your IONIQ 5's charging remotely while it is plugged into an external power source, and schedule charging at specific times to take advantage of low-demand hours and rates.<sup>7</sup>



### Remote Vehicle Status

Wondering how much charge your battery has? If the doors are locked or your liftgate is closed? Your MyHyundai app knows the answers to these questions and more.



### Destination Send-to-Car

Use your smartphone to find restaurants or points of interest, then send them to IONIQ 5's navigation system for access to driving directions the moment you slip behind the wheel.<sup>8</sup>



### Remote Vehicle Controls

Use your smartphone, home assistant or wearable device to remotely start your IONIQ 5, unlock your doors, set your vehicle's cabin temperature and more.



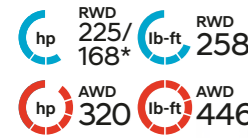
### Remote Climate Controls

Pre-heating your IONIQ 5 when connected to a power source saves battery power that would be needed to heat the vehicle on the road. On warmer days, the Remote Climate Control can cool the cabin before your drive.

<sup>1</sup>The 2023 IONIQ 5 includes three years of the Bluelink Connected Care, Remote and Guidance (factory-equipped navigation required) packages. All trials require an active Bluelink subscription agreement subject to the Connected Services Terms and Conditions. Three-year term starts from the new vehicle date-of-first-use, is available for new vehicle purchases and leases, and is transferable to subsequent owners subject to the Terms and Conditions. Only use Bluelink and corresponding devices when safe to do so. Cellular and GPS coverage is required. Features, specifications and fees are subject to change. For more on details and limitations, visit HyundaiUSA.com or your authorized Hyundai dealer. <sup>2</sup>Requires active Bluelink subscription with Remote package. Amazon, Alexa and all related logos and motion marks are trademarks of Amazon.com, Inc. or its affiliates. Google Assistant and Google Home are trademarks of Google Inc. <sup>3</sup>Requires active Bluelink subscription with Remote package. <sup>4</sup>The Hyundai Near Field Communication Digital Key requires a compatible Android smartphone and appropriately equipped 2023 IONIQ 5. Not all Android devices are compatible. Vehicle must be equipped with a smart key with push button start, wireless device charging and Audio Video Navigation System 5.0 (or newer) or Display Audio 2.0. Lock/unlock functionality works on the front doors only. See your Owner's Manual or visit your local Hyundai dealer for details. <sup>5</sup>Apple CarPlay is a registered trademark of Apple Inc. Android Auto<sup>™</sup> is compatible with Android<sup>™</sup> phones running Android 5.0 or higher. Android Auto may not be available on all devices and is not available in all countries or regions. Additional apps may be required. Android and Android Auto are trademarks of Google LLC. <sup>6</sup>Bluelink agents will contact existing emergency service providers. <sup>7</sup>Requires Bluelink Remote package. For remote charging, vehicle needs to be plugged into an electrical socket. See Owner's Manual for details and limitations. <sup>8</sup>Requires active Bluelink subscription with Guidance package and vehicle equipped with navigation system.

## IONIQ 5 SE

Single-Motor Rear Wheel Drive  
Dual-Motor All Wheel Drive



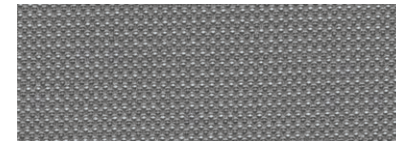
Popular Features
Parametric pixel LED headlights and taillights
Flush door handles with automatic extend/retract
Blind-Spot Collision-Avoidance Assist
Rear Cross-Traffic Collision-Avoidance Assist
Bluelink® Connected Car System
12.3" digital instrument cluster display
12.3" touchscreen navigation display

\* SE Standard Range RWD with 58 kWh battery & 168-hp single motor

## Interior Colors



Black Cloth SE



Gray Two-Tone Cloth SE



Black H-Tex™ SEL/Limited



Light Gray H-Tex™ | Gray Trim SEL/Limited

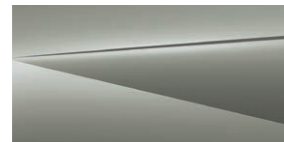


Light Gray H-Tex™ | Dark Green Trim SEL/Limited

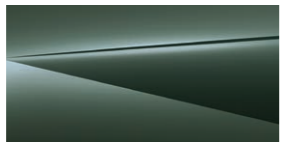
## Exterior Colors



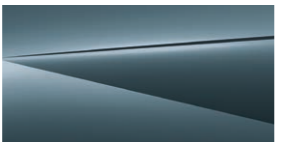
Atlas White



Cyber Gray



Digital Teal



Lucid Blue



Phantom Black / Abyss Black



Shooting Star (Matte Gray)



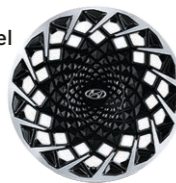
Gravity Gold (Matte Gold)

## Wheels

19" Alloy Wheel SE, SEL and Limited RWD

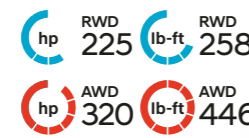


20" Alloy Wheel Limited AWD



## IONIQ 5 SEL

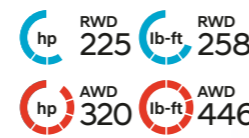
Single-Motor Rear Wheel Drive  
Dual-Motor All Wheel Drive



Popular Features
Parking Distance Warning – Forward & Reverse
H-Tex™ seating surfaces and soft-touch door trim
Heated steering wheel and ambient LED interior lighting
Hands-free smart liftgate with auto open
Highway Driving Assist II
Auto-dimming rearview mirror with HomeLink®
Hyundai Digital Key and wireless device charging

## IONIQ 5 Limited

Single-Motor Rear Wheel Drive  
Dual-Motor All Wheel Drive



Popular Features
Blind-Spot View Monitor and Surround View Monitor
Remote Smart Parking Assist
Driver seat with Relaxation Function and Integrated Memory System
Bose® 8-speaker premium audio system
Premium Head-up Display with Augmented Reality functions
2nd-row Vehicle-to-Load (V2L) two-way onboard charger
Vision Roof panoramic sunroof with sunshade

## IONIQ 5

Power & Handling	SE	SEL	Limited
RWD 125 kW (168 hp) / 258 lb-ft permanent-magnet synchronous motor	●	–	–
58 kWh lithium ion battery	●	–	–
RWD 168 kW (225 hp) / 258 lb-ft permanent-magnet synchronous motor	○	●	●
AWD 74 kW + 165 kW (320 hp) / 446 lb-ft permanent-magnet synchronous dual motors	○	○	○
77.4 kWh lithium ion battery	○	●	●
Ultra-fast charging system (up to 800V / 350 kW)	●	●	●
Battery heating system and battery preconditioning function	●	●	●
Rack-mounted Motor-Driven Power Steering	●	●	●
Column-mounted Shift-by-Wire gear selector	●	●	●
Regenerative brake level control paddles	●	●	●
Multi-link rear suspension	●	●	●
2,300-lb towing capacity (77.4 kWh battery only)	○	●	●
Exterior Features	SE	SEL	Limited
Active grille shutters	●	●	●
Automatic on/off headlights with High Beam Assist	●	●	●
Parametric pixel LED headlights and LED taillights	●	●	●
LED Daytime Running Lights	●	●	●
Projector-type LED headlights and premium front LED accent lighting	–	–	●
Heated side mirrors with LED turn signal indicators	●	●	●
Power-folding side mirrors	–	●	●
Flush door handles with automatic extend/retract	●	●	●
Premium gloss black exterior accents	–	–	●
Rear roof spoiler with center LED brake light	●	●	●
Vision Roof panoramic sunroof with sunshade	–	–	●
Privacy rear glass	●	●	●
Front trunk	●	●	●
Hands-free smart liftgate with auto open	–	●	●
Rear View Monitor with Parking Guidance	●	●	●
Rain-sensing windshield wipers	–	–	●
Interior Features	SE	SEL	Limited
Proximity Key entry with push button start	●	●	●
12.3" digital instrument cluster display	●	●	●
Leather-wrapped tilt-and-telescopic steering wheel with audio, phone and cruise controls	●	●	●
Dual automatic temperature control with Driver Only mode	●	●	●
2nd-row air conditioning vents	–	●	●
Cloth   H-Tex™ seating surfaces	● –	– ●	– ●
8-way power driver seat and heated front seats	●	●	●
Driver seat with Relaxation Function and Integrated Memory System	–	–	●
8-way power front passenger seat	–	–	●
Ventilated front seats	–	–	●
Rear side-window sunshades	–	–	●

Interior Features	SE	SEL	Limited
Heated steering wheel and ambient LED interior lighting	–	●	●
Premium door sill plates and sliding center console	–	–	●
60/40 split-folding 2nd-row seats with recline & slide and center armrest	●	●	●
2nd-row Vehicle-to-Load (V2L) two-way onboard charger	–	–	●
Premium Head-up Display with Augmented Reality functions	–	–	●
Auto-dimming rearview mirror with HomeLink®	–	●	●
Smart Cruise Control with Stop & Go	●	●	●
Remote Smart Parking Assist	–	–	●
Highway Driving Assist (HDA I   HDA II)	● –	– ●	– ●
Advanced Safety	SE	SEL	Limited
Forward Collision-Avoidance Assist with Pedestrian, Cyclist and Junction-Turning Detection	●	●	●
Lane Keeping Assist and Lane Following Assist	●	●	●
Blind-Spot Collision-Avoidance Assist	●	●	●
Rear Cross-Traffic Collision-Avoidance Assist	●	●	●
Driver Attention Warning	●	●	●
Blind-Spot View Monitor and Surround View Monitor	–	–	●
Safe Exit Assist and Rear Occupant Alert	●	●	●
Parking Distance Warning – Reverse	●	●	●
Parking Distance Warning – Forward & Reverse	–	●	●
Parking Collision-Avoidance Assist – Reverse	–	–	●
Audio & Connected Car Technology	SE	SEL	Limited
12.3" high-resolution color touchscreen navigation system	●	●	●
Bluetooth® multiple device connection (up to two devices)	●	●	●
Bose® 8-speaker premium audio system	–	–	●
SiriusXM® Satellite Radio and HD Radio™	●	●	●
Apple CarPlay® and Android Auto™	●	●	●
Hyundai Digital Key and wireless device charging	–	●	●
Bluelink® Connected Car System with Remote Charge Access	●	●	●
Dynamic Voice Recognition	●	●	●
USB ports: Front (1 data/charge + 2 charge), Rear (2 charge)	●	●	●

● Standard ○ Optional – Not Available

HTRAC All Wheel Drive Option (requires 77.4 kWh battery)			
AWD dual-motor electric powertrain	HTRAC liftgate badge		
Heat pump (heater)	20" alloy wheels (Limited AWD only)		

Exterior & Interior Dimensions			
Wheelbase	118.1 in	Headroom – front/2nd row (with Vision Roof)	39.8/38.7 in (39.1/37.5) in
Overall Length	182.5 in	Cargo Capacity – 2nd row seats up/down	27.2/59.3 cu ft
Overall Width	74.4 in	Legroom – front/2nd row	41.7/39.4 in
Overall Height	63.0 in	Passenger Volume	106.5 cu ft
		Shoulder Room – front/2nd row	57.7/57.7 in
		Total Interior Volume	133.7 cu ft

Estimated All-Electric Range based on a fully charged battery and combined MPGe. MPGe is the EPA-equivalent measure of gasoline fuel efficiency for electric mode operation. Use for comparison only. Mileage may vary with driving conditions, driving habits, the vehicle's condition, the age/condition of the lithium ion battery, and other factors.

### IONIQ 5

EPA Estimates (City/Highway/Combined)

127/94/110 MPGe

220 Estimated All-Electric Range (EPA combined miles)

RWD SE Standard Range

132/98/114 MPGe

303 Estimated All-Electric Range (EPA combined miles)

RWD SE/SEL/Limited

113/90/101 MPGe

266 Estimated All-Electric Range (EPA combined miles)

AWD SE/SEL/Limited



Hyundai Hope On Wheels®

Helping Kids Fight Cancer Since 1998



## Hope comes standard on every Hyundai.

Each time we sell a Hyundai, a portion goes to Hyundai Hope On Wheels® to help find a cure for childhood cancer. Over the last 24 years, Hyundai Hope On Wheels has donated more than \$200 million. Hope is our greatest feature. And it comes standard on every Hyundai. For more information, please visit [HyundaiHopeOnWheels.org](http://HyundaiHopeOnWheels.org).



## America's Best Warranty

**POWERTRAIN LIMITED WARRANTY**

**10** YEARS  
100,000 MILES

**NEW VEHICLE LIMITED WARRANTY**

**5** YEARS  
60,000 MILES

**ANTI-PERFORATION WARRANTY**

**7** YEARS  
UNLIMITED MILES

**24/7 ROADSIDE ASSISTANCE**

**5** YEARS  
UNLIMITED MILES

**HYBRID/ELECTRIC SYSTEM COMPONENTS**

**10** YEARS  
100,000 MILES



**Hyundai Complimentary Maintenance**

Complimentary maintenance includes Hyundai-approved oil and oil filter change (except for electric vehicles and fuel cell electric vehicles) plus tire rotation at normal factory-scheduled maintenance intervals for 3 years or 36,000 miles, whichever comes first. More frequent maintenance due to severe driving or conditions is excluded. Offer valid only for new 2020-2023 Hyundai models purchased or leased on or after February 1, 2020. See your Hyundai dealer for further details and limitations.



**Owner Assurance**

Our commitment to Hyundai owners does not end with the transfer of keys. Wherever the road takes you, we've got your back with Owner Assurance, an umbrella of services and benefits that includes America's Best Warranty, 24/7 Roadside Assistance, innovative safety and car care features...and more.

See dealer for LIMITED WARRANTY details. Fuel economy estimated by EPA for comparison only. Mileage may vary. While the information contained in this brochure was correct at the time of printing, specifications and equipment can change. Feature comparisons based on competitor information available at the time of printing. No warranty or guarantee is being extended in this brochure, and Hyundai reserves the right to change product specifications and equipment at any time without incurring obligations. Some vehicles are shown with optional equipment. Specifications apply to U.S. vehicles only. Please contact your Hyundai dealer for current vehicle specifications. As part of Hyundai's commitment to a responsible environment, this brochure was printed using paper certified by the Forest Stewardship Council®. FSC® certification helps ensure that the highest social and environmental standards are met in the making of the paper we use, contributing to conservation, responsible management and community-level benefits for people near the forests.



©2022 HYUNDAI NP020Y2023