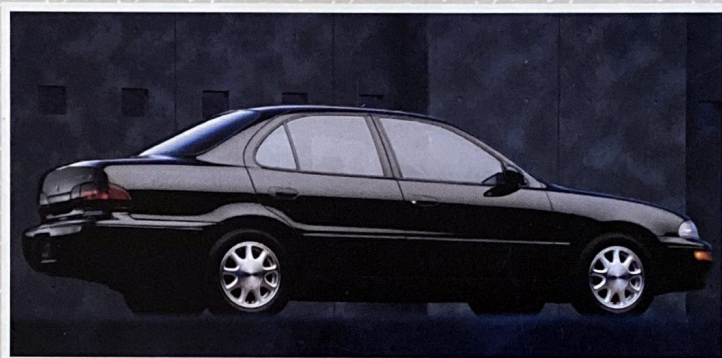


Geo ^{GM} PRIZM



1 9 9 3



Geo PRIZM

In a word, excellence.

The new shape of Geo Prizm is sleek — dramatically aero. ♦ There are new levels of comfort and safety. ♦ Every component is designed to a very high standard of quality. ♦ The 16-valve engine and the four-wheel independent suspension provide the spirited performance and smooth ride you want. ♦ In every way, the new Geo Prizm is precision-built for your long-term enjoyment and satisfaction. ♦ And, perhaps best of all, Prizm has an affordable Geo price. ♦ Read on. It only gets better.



Geo

PRIZM

Geo Prizm for 1993 sets

a beautiful standard of

quality. It is also safer,

roomier, and quieter than

ever before. Choose from

two models: the Prizm LSi

Sedan shown here or the

Prizm Sedan.



Geo Prizm LSi Sedan
with optional alloy wheels.

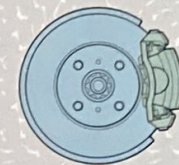
Geo PRIZM



SECURITY LOCKS
A Geo Prizm safety feature that will be of particular interest to parents with young children is the child security rear-door lock system. This feature, when engaged, prevents the rear doors from being opened from the inside.



COMFORT ZONE
New front-seat shoulder belt anchors provide an adjustment feature, so belts fit more comfortably, whether you're 6'5" or 5'2"



YOUR BIG BRAKE
New, larger-diameter front disc brakes provide excellent stopping power with enhanced fade resistance.



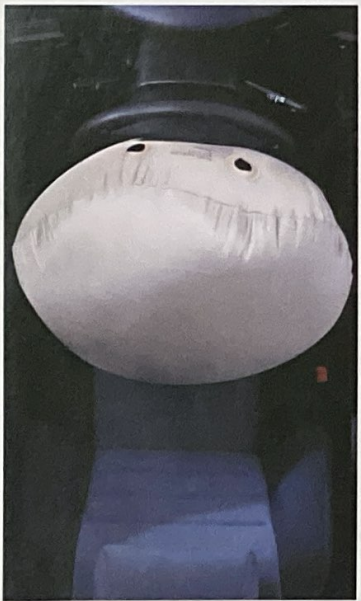
SAFETY SHIFT INTERLOCK
On automatic-transmission models, the shift interlock feature requires the driver to apply the brake before shifting from PARK to DRIVE.

Safety By Design

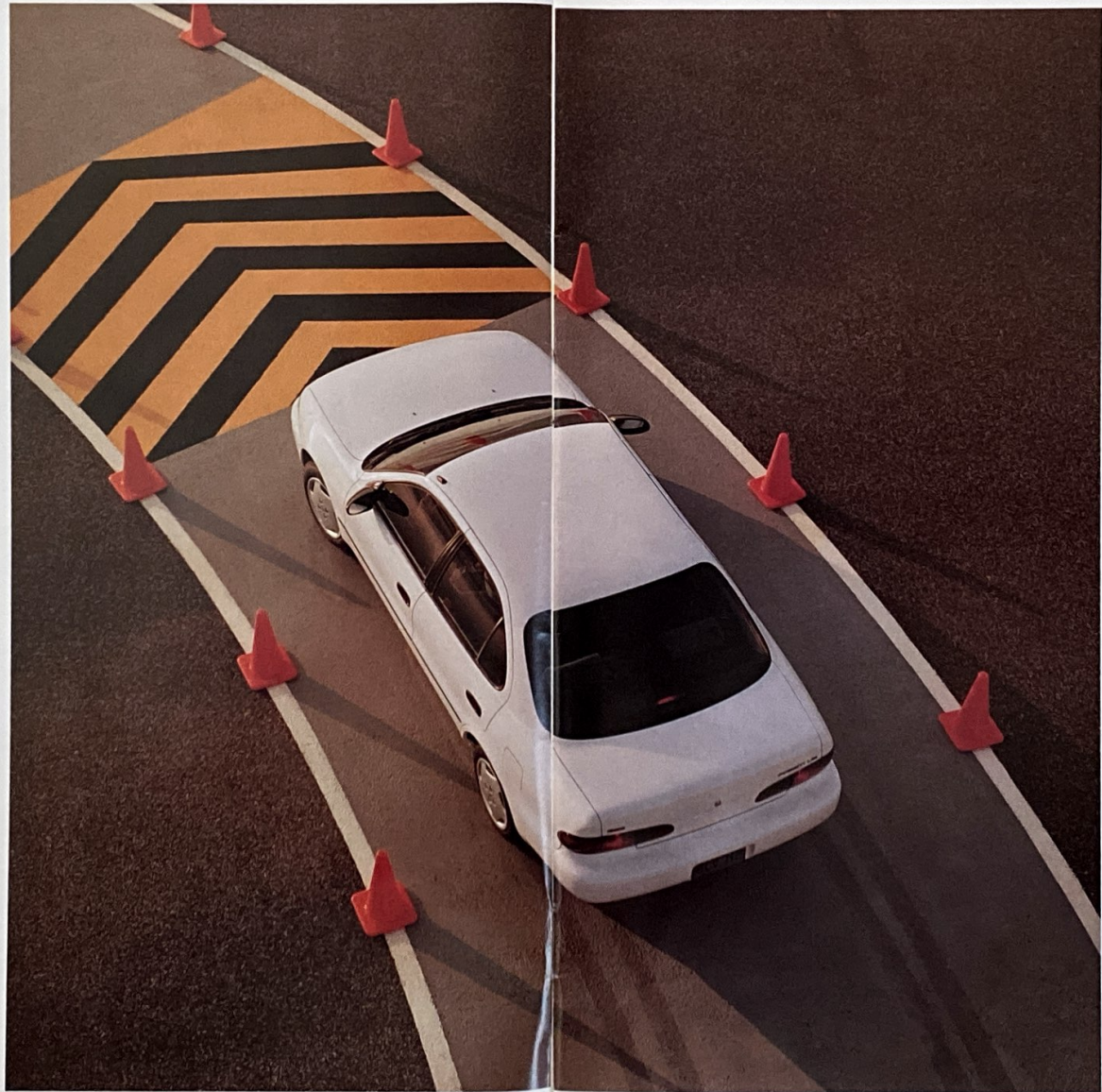
You'll feel secure placing your family in the 1993 Geo Prizm.

Accident avoidance features include larger-diameter brakes and an optional four-wheel anti-lock brake system (ABS) for exceptional stopping control. A sophisticated suspension design helps the driver to react quickly and surely.

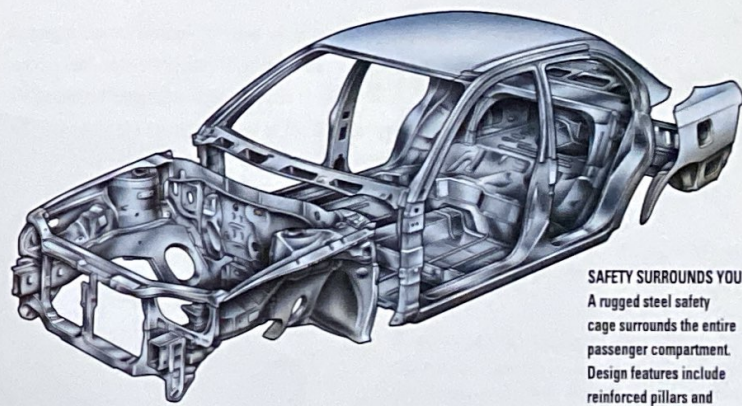
Occupant protection features in the new Geo Prizm include a steel safety cage surrounding the entire passenger compartment, energy-absorbing front and rear body structures, and a driver-side air bag. These features are the result of exhaustive safety research, including barrier tests, side-impact, rear-impact, and roof-crush tests. Safety isn't one thing ... it's every security feature that goes into the 1993 Geo Prizm.



PEACE OF MIND
A driver-side air bag is standard in every 1993 Geo Prizm. The air bag is concealed in the steering wheel until it is activated by a moderate to severe frontal impact. It inflates in a fraction of a second to help protect the driver, then quickly deflates. Always wear safety belts, even with air bags.



YOU'RE IN CONTROL
A GM-developed four-wheel anti-lock brake system (ABS) is a new optional feature for 1993. ABS helps the driver maintain vehicle control during braking under many adverse road conditions and in emergencies by minimizing wheel lockup. When conditions require, ABS modulates the brake pressure to the wheels that need it — in plain English, it pumps the brakes faster than is humanly possible. ABS helps provide the driver with the ability to steer around obstacles under severe braking conditions.

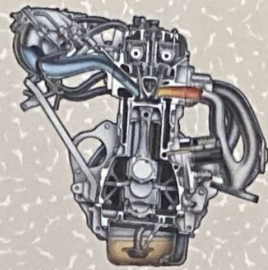


SAFETY SURROUNDS YOU
A rugged steel safety cage surrounds the entire passenger compartment. Design features include reinforced pillars and side-guard door beams. The front and rear body structures include energy-absorbing "crush" zones that reduce crash forces on occupants.

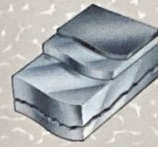


CUSHIONS THE BLOW
Energy-absorbing front and rear bumpers are designed to absorb low-speed impacts, so you don't have to worry as much about careless parkers and accidental bumps.

Geo PRIZM



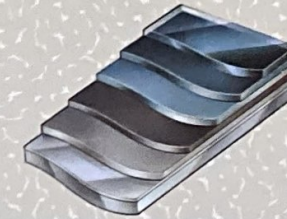
QUIET POWER
Two powerful new reasons to choose Geo Prizm for 1993: the 1.6 Liter engine that's standard in all models and the 1.8 Liter engine that's available in the LSi. Both engines feature an advanced dual overhead-camshaft design. (1.8 Liter engine shown here.)



THINK ZINC
The extensive use of zinc-rich galvanized steel helps protect against body rust-through.



PRECISION FIT
Geo Prizm is designed to high standards of "fit-and-finish," including precise fit of body panels and exactness of seams.



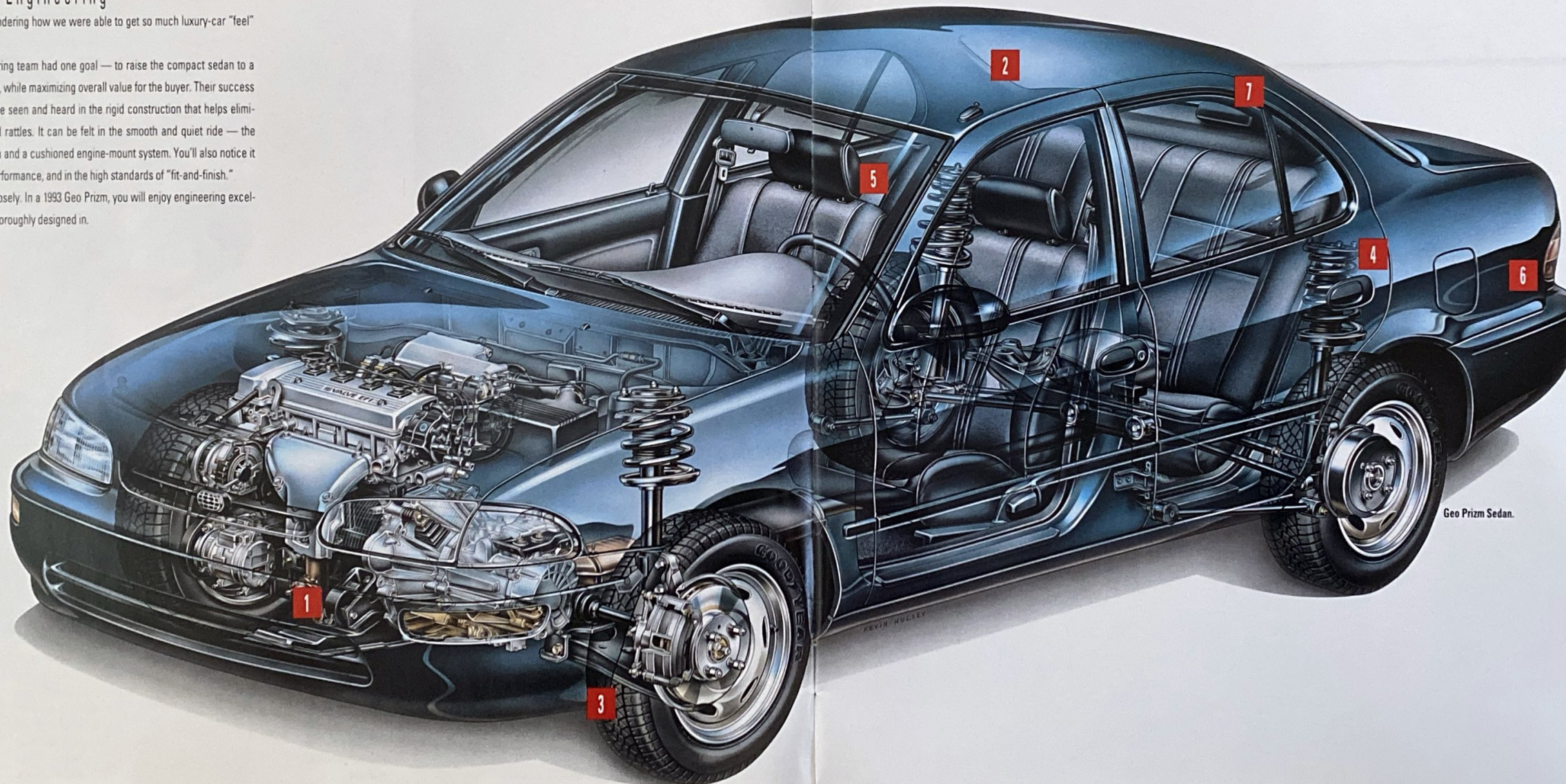
THE LAYERED LOOK
Geo Prizm's beautiful exterior appearance is enhanced by paint that provides a deep, "wet-look" shine. And Geo Prizm is designed to stay new-looking for a long time, thanks to several rust-fighting layers of paint underneath the top coat.

Excellence In Engineering

One drive will have you wondering how we were able to get so much luxury-car "feel" into the new Geo Prizm.

The Geo Prizm engineering team had one goal — to raise the compact sedan to a new standard of excellence, while maximizing overall value for the buyer. Their success in achieving this goal can be seen and heard in the rigid construction that helps eliminate annoying squeaks and rattles. It can be felt in the smooth and quiet ride — the result of a tuned suspension and a cushioned engine-mount system. You'll also notice it in the responsive engine performance, and in the high standards of "fit-and-finish."

We invite you to look closely. In a 1993 Geo Prizm, you will enjoy engineering excellence that's carefully and thoroughly designed in.



Geo Prizm Sedan.

- 1 CRADLE OF POWER**
Reduced vibration and a refined feel are the results of a new miniframe design that cushions and isolates the powertrain.
- 2 QUIET ZONE**
A quiet car is a quality car, and the new Geo Prizm is an outstanding example. The quietness results from a rigid, rattle-free body structure and the generous use of interior insulation and sound-deadening materials.
- 3 MORE STOPPING POWER**
Larger front disc brakes are featured, for greater brake capacity and increased brake durability.
- 4 INDEPENDENT THINKING**
Geo Prizm gives you the comfortable ride of a larger car, with the road-holding "feel" of a sport sedan. A four-wheel independent suspension provides this superb blend of ride and response.
- 5 YOU'LL LOVE THE VIEW**
Enjoy excellent visibility in all directions, thanks to Geo Prizm's generous glass area, combined with a thin-pillar design, low hood and low window lines. It's one more reason Geo Prizm is such a delightful car to drive.
- 6 RUST FIGHTER**
A stainless-steel exhaust system is a standard feature you'll still be appreciating years from now.
- 7 AERO STYLE**
The shape of Geo Prizm is entirely new, and dramatically more aerodynamic, for 1993. The benefits of this aero shape include a quiet ride at highway speeds.

Geo PRIZM



SUNSHINE SPECIAL
The optional electric sliding-steel sunroof adds a sporty touch. An interior map light is included.



OPEN WIDE
The new Geo Prizm is easy to load, thanks to a trunk lid that opens high and out of the way. Cargo space is an impressive 12.7 cu. ft.



REMOTE POSSIBILITY
Dual electric remote-control outside mirrors are optional on LSi models.

LSi Sedan

LSi Sedan is the top-of-the-line Prizm.

In an LSi, the sleek styling of Geo Prizm is enhanced by black pillar trim and aero-style full wheel covers. For an even sportier appearance, the LSi may be ordered with aluminum-alloy wheels.

Other optional features that are available exclusively on the LSi include the 1.8 Liter, 16-valve engine with Multi-Port Fuel Injection, an electronically controlled 4-speed automatic transmission, power windows and a CD player.



Geo Prizm LSi Sedan.

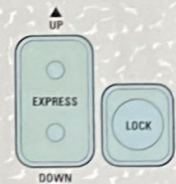
Geo PRIZM



PROBLEM SOLVER
A split-folding rear seat provides a trunk pass-through feature for additional cargo-carrying flexibility.



DON'T WORRY
For added durability, Scotchgard™ Fabric Protector protects the seat fabrics and door panels of all Geo Prizm models. It's an added-value feature, for stain resistance and easy cleanup.



POWER MOVES
Geo Prizm LSi's optional power door locks and power windows (with driver's Express-Down feature) are luxury features you'll certainly want to consider.



FUEL TANK SECURITY
A remote-control fuel-filler door is standard on all models and a remote trunk release is optional on the Geo Prizm LSi.

LSi Interior

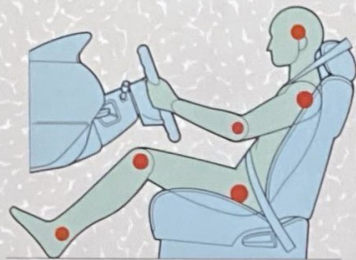
"Spacious" and "luxurious" are two very accurate terms to describe Geo Prizm's 5-passenger interior. LSi interior features include all of the following: Custom Cloth seat trim, a split-folding rear seat, center console with armrest, dual visor mirrors, passenger-assist grips, in-door storage bins, and an adjustable steering column.



Geo

PRIZM

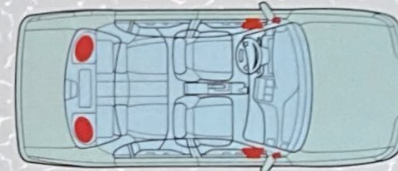
WITHIN YOUR REACH
Combining comfort and control is a science that the designers of Geo Prizm understand very well. As a result, instruments are easy to read and controls are easy to adjust.



BE WELL-ADJUSTED
It's easy to get comfortable behind the wheel of a Geo Prizm LSi, thanks to the standard adjustable steering column.



INVEST IN A CD
You can order a Delco AM/FM stereo with both cassette tape player and compact disc player.



SIX-SPEAKER SOUND
The optional, premium AM/FM stereo with cassette tape and CD players features six Extended Range speakers for sound that's tuned precisely to the interior acoustics of Geo Prizm LSi.



TAKE THE CRUISE
The LSi's optional electronic speed control has convenient Resume, Speed, Accelerate, and Coast features.

LSi Instrumentation

The flowing design of Geo Prizm doesn't stop with the exterior. The beauty extends throughout the interior, and it is highlighted by an instrument panel that communicates information clearly and with style. Features include analog gauges, trip odometer, headlamps-on reminder tone, door-ajar and low-battery warning lamps. A tachometer is optional.



Geo PRIZM



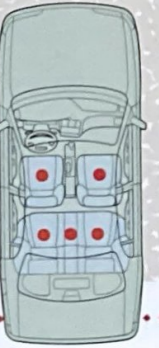
GRACED WITH SPACE
In the '93 Geo Prizm, you'll discover room for five and comfort for all. Front-seat occupants will enjoy reclining bucket seats with adjustable head restraints and adjustable shoulder belt anchors.



LOADING MADE EASY
You won't believe the cargo room! And bumper-level loading adds to the convenience of Geo Prizm's spacious 12.7-cu.-ft. trunk.



TEA FOR TWO
The standard slide-out cup holder is designed to accommodate two large cups or 12-ounce cans.



GIVE ME FIVE
If you're looking for five-passenger roominess without the bulk and expense of a large car, the Geo Prizm may be exactly what you had in mind.

Sedan

The standard Geo Prizm Sedan is anything but basic. Like the LSi, this Geo Prizm is beautifully designed and engineered with precision. The benefits of advanced design are immediately apparent. You get room for five, a quiet ride, 16-valve performance, and the confidence of a four-wheel independent suspension.

You'll also be glad to know that Geo Prizm takes your safety seriously, with a standard driver-side air bag,* a rigid safety cage surrounding the entire passenger compartment, and an optional 4-wheel anti-lock brake system (ABS).

*Always wear safety belts, even with air bags.



Geo Prizm Sedan.

Geo

PRIZM



Geo Prizm Sedan



Geo Prizm LSi Sedan

Specifications

Optional Preferred Equipment Groups

NOTE: These optional Preferred Equipment Groups (PEGs) help simplify the buying process. Just choose the 1993 Geo Prizm PEG containing the equipment you desire. You may also add selected individual options. (See Standards & Options chart below for model availability.) Some restrictions may apply. Please see your Geo salesperson for details.

Preferred Equipment Group Number	Base	LSi		
	1	1	2	3
Standard Equipment	S			
LSi Equipment		S	S	S
Electronically Tuned AM/FM Stereo with Seek feature and Digital Clock (includes dual front and rear speakers)			■	■
Mirrors: Outside, Dual Electric Remote			■	■
Power Steering			■	■
Air Conditioning			■	■
Intermittent Windshield Wiper System			■	■
Remote Trunk Release			■	■
Power Door Lock System				■
Power Windows				■
Electronic Speed Control with Resume Speed				■

Standards & Options

NOTE: Some individually available options listed below may be included in specific Preferred Equipment Groups (see chart above). Some restrictions may apply. Please see your Geo salesperson for details.

	Base	LSi
Exterior		
Black body-side moldings	S	S
Black window and door moldings	-	S
Body-color front and rear bumpers	S	S
Child security rear-door locks	S	S
Composite halogen headlamps	S	S
Driver-side air bag (supplemental inflatable restraint)	S	S
Driver-side outside rearview mirror (remote)	S	S
Dual electric exterior rearview mirrors	-	O
Dual exterior rearview mirrors (LH remote)	O	O
Tinted glass	S	S
Interior		
Adjustable steering wheel	-	S
Air conditioning	O	O
Center console with storage trays and slide-out cup holder	S	S
Custom "soft-touch" steering wheel	S	S
Day/night inside rearview mirror	S	S
Door storage bins (driver-side only on base Prizm)	S	S
Dual covered visor mirrors	-	S
Electric rear-window defogger	O	O
Electric sunroof, includes map light	-	O
Floor mats, front/rear, color-keyed	O	O
Full-floor carpeting	S	S
Headlamps-on reminder tone	S	S
Intermittent wipers	O	O
Low lift-over trunk opening	S	S
Passenger-assist grips	-	S
Power door locks	O	O
Power steering	O	O
Remote fuel-filler door opener	S	S
Remote trunk release	-	O
Scotchgard™ Fabric Protector on seats/door trim	S	S
Tachometer	O	O
Seats		
Cloth-and-vinyl seat trim	S	-
Contoured reclining front bucket seats	S	S
Custom Cloth seat trim	-	S

S — Standard. O — Optional.

Interior (continued)	Base	LSi
Seats (continued)		
Split-folding rear seat with trunk pass-through	-	S
Delco® Sound Systems		
NOTE: All Geo Prizm sound systems include a Delco® electronically tuned AM/FM stereo with a Seek feature and digital clock.		
AM/FM stereo	O	O
AM/FM stereo with cassette tape player	O	O
AM/FM stereo with cassette tape player, compact disc player and six speakers	-	O
Power Teams/Chassis		
1.6 Liter 16-valve L4 engine with dual overhead camshaft and Multi-Port Fuel Injection	S	S
1.8 Liter 16-valve L4 engine with dual overhead camshaft and Multi-Port Fuel Injection	-	O
5-speed manual transmission with 4th and 5th gear overdrive	S	S
3-speed automatic transmission (with 1.6L engine only)	O	O
4-speed electronically controlled automatic transmission (with 1.8L engine only)	-	O
Four-wheel anti-lock brake system (ABS VI)	O	O
MacPherson Strut four-wheel independent suspension	S	S
Rack-and-pinion steering	S	S
Rear stabilizer bar	-	O*
Stainless-steel exhaust system	S	S
Wheels/Tires		
Argent 14" styled steel wheels	S	-
Full wheel covers	-	S
14" alloy wheels	-	O
P175/65R-14 all-season steel-belted radial ply tires	S	S
P185/65R-14 all-season steel-belted radial ply tires	-	O*

S — Standard. O — Optional. *With optional 1.8 Liter engine only.

Dimensions

Exterior (in.)	All Models
Wheelbase	97.1
Length (overall)	172.6
Width (overall)	66.3
Height	52.8
Interior (in.)	
Head room—front	38.8
Head room—rear	37.1
Leg room—front	42.4
Leg room—rear	32.9
Shoulder room—front	53.8
Shoulder room—rear	53.3
Capacities	
Passenger capacity	5
Cargo capacity (cu. ft.)	12.7
Fuel tank (gal.)	13.2

Trailer

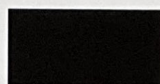
Trailer with Geo Prizm models is not recommended.

Color & Trim Availability

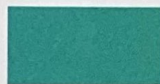
Exterior Colors	Interior Colors		
	Dark Blue	Dark Charcoal	Light Gray
Black Mist Metallic			■
Polynesian Green Metallic		■	
Slate Blue Mica	■		
Gulfstream Teal Metallic			■
White	■		
Ice Blue Mica	■		
Bright Red		■	
Crystalrose Mica		■	
Crimson Cloak Mica			■

■ Available.

Exterior Colors



Black Mist Metallic



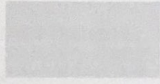
Polynesian Green Metallic



Slate Blue Mica



Gulfstream Teal Metallic



White



Ice Blue Mica



Bright Red



Crystalrose Mica

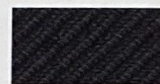


Crimson Cloak Mica

Interior Fabrics



Standard Cloth



LSi Custom Cloth

Wheel Covers



Standard Wheel

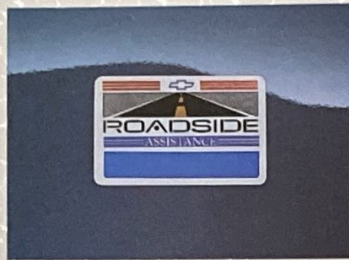


LSi Wheel Cover



Optional LSi Alloy Wheel

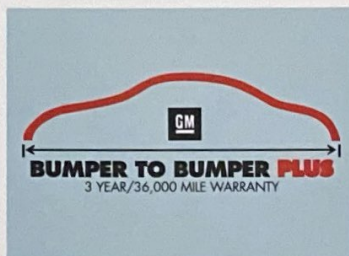
GET TO KNOW THE COMPANY THAT CARES



HELP IF YOU NEED IT

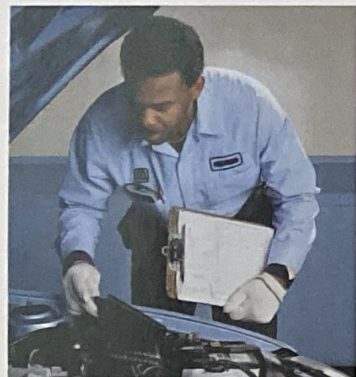
The security of round-the-clock roadside assistance is available to every Geo Prizm owner via a toll-free hot line. Your call will be answered by a Roadside Assistance phone advisor trained by Chevrolet. You will be placed in contact with a nearby service center, and assistance with towing and other helpful services will be arranged. Please ask your Chevrolet/Geo dealer for more details.

Everything about the 1993 Geo Prizm — the high standards of quality in design and manufacture, the excellent warranty, the Roadside Assistance Program — reflects one goal. We want your new Geo Prizm to be a pleasure to own, from the day you buy it to the day you sell it. It's as simple as that.



BUMPER TO BUMPER PLUS

GM's 3-year/36,000-mile limited warranty covers repairs for the 1993 Geo Prizm, including labor and parts, to correct any defects in material or workmanship occurring during the warranty period. Warranty features include air conditioning repair, towing, no-cost warranty transfer, 6-year/100,000-mile body sheet metal rust-through protection and 5-year/50,000-mile emissions control system coverage. Items not covered include tires (which are covered by their manufacturer) and normal maintenance. See your Chevrolet/Geo dealer for terms of this limited warranty.



FREMONT, CALIFORNIA
Geo Prizm is assembled in one of the U.S.A.'s most innovative automotive plants: the New United Motor Manufacturing facility in Fremont, California. This joint venture between General Motors and Toyota uses the team concept to build some of the highest-quality automobiles in the world.



OVER 4000 DEALERS NATIONWIDE

No import car company offers as wide a dealer network as Chevrolet/Geo. Wherever you go in your new Geo Prizm, it's good to know that service is always as near as a Chevy dealer displaying this sign.



WE'RE AT YOUR SERVICE

Chevrolet's Customer Assistance Center (CAC) has a special, toll-free 800 number. It puts you in contact with experts who can handle any product or service questions you may have with your Geo Prizm. Call 1-800-222-1020, Monday through Friday, 8:00 a.m. to 7:30 p.m., Eastern Standard Time.



GM PROTECTION PLAN

The GM Protection Plan offers service protection in addition to that provided by GM's new-vehicle warranty. Ask your dealer about it. Coverage is available in the United States and Canada only.

FOR SAFETY'S SAKE

The 1993 Geo Prizm has been designed with state-of-the-art safety features, including a driver-side air bag, a safety cage surrounding the entire passenger compartment, and lap/shoulder safety belts for all outboard seating positions.

Drive the new Geo Prizm with confidence, but please drive carefully. After all, the most important safety feature in any car is the driver.

OCCUPANT PROTECTION

- Supplemental Inflatable Restraint, driver only, with manual lap/shoulder safety belts for the driver and right-front passenger, both including visual and audible warning system
- Manual lap/shoulder safety belts, outboard rear-seat positions
- Manual lap safety belts, center rear-seat position
- Energy-absorbing steering column
- Energy-absorbing instrument panel
- Interlocking door latches
- Laminated windshield glass with urethane bonding
- Side-guard door beams
- Passenger-guard inside door lock handles
- Safety armrests

- Head restraints, driver and right-front passenger (adjustable)
- Breakaway inside rearview mirror
- Security door lock and door-retention components.

ACCIDENT AVOIDANCE

- Side marker lamps and reflectors
- Parking lamps that illuminate with headlamps
- Four-way hazard-warning flashers
- Backup lamps
- Center high-mounted stop lamp
- Directional signal control with lane change feature (turn signal lamp)
- Windshield defroster, washer and multi-speed wipers

- Inside manual day/night rearview mirror
- Outside left rearview mirror
- Brake system with dual master cylinder and warning light
- Starter safety switch
- Dual-action hood latch
- Low-glare finish on inside windshield moldings, wiper arms and blades
- Illuminated heater and defroster controls
- Tires with built-in tread wear indicators.

A WORD ABOUT ENGINES

Chevrolets are equipped with engines produced by different operating units of GM, its subsidiaries or suppliers to GM worldwide.

A WORD ABOUT CORROSION PROTECTION

Chevrolets are designed and built to resist corrosion. All body sheet-metal components are warranted against rust-through corrosion for 6 years/100,000 miles. Application of additional rust-inhibiting materials is not required under the corrosion coverage.

A WORD ABOUT ASSEMBLY

Chevrolets are assembled by different operating units of General Motors, its subsidiaries or suppliers to GM worldwide. We sometimes find it necessary to produce Chevrolets with different or differently sourced components than originally scheduled. All such components have been approved for use in Chevrolets and will provide the quality performance associated with the Chevrolet name. Since some options may be unavailable when your vehicle is assembled, we suggest that you verify that your vehicle includes the equipment you ordered, or if there are changes, that they are acceptable to you.

A WORD ABOUT UPDATED SERVICE INFORMATION

Chevrolet regularly sends its dealers useful service bulletins about Chevrolet products. Chevrolet monitors product performance in the field. We then prepare bulletins for servicing our products better. Now you can get these bulletins, too. Ask your dealer. To get ordering information, call toll free 1-800-551-4123.

IMPORTANT: A WORD ABOUT THIS CATALOG

We have tried to make this catalog as comprehensive and factual as possible. We reserve the right, however, to make changes at any time, without notice, in prices, colors, materials, equipment, specifications, models and availability. Since some information may have been updated since the time of printing, please check with your Chevrolet dealer for complete details.

At your Chevrolet dealer, financing or leasing your new Geo Prizm can be as easy as saying GMAC.

General Motors, GM, the GM Emblem, Chevrolet, Geo, the Geo grille Emblem and Delco are registered trademarks and Prizm is a trademark of the General Motors Corporation. GMAC is a registered trademark of the General Motors Acceptance Corporation. ©1992 General Motors Corporation. All rights reserved.



Litho in U.S.A. 5219 July 1992

Get To Know



Distinctive vehicles that are fun
to run and easy to own. Sold and
serviced by Chevrolet/Geo dealers.