



The new Beetle

2003 Model Year

Volkswagen Information Service. Telephone 0800 333 666

Internet: www.volkswagen.co.uk

© Volkswagen Group United Kingdom Limited 2002.

Issue: 1 June 2002. Printed in UK.

PVW052BE

Smile.

The new Beetle.



4 *Philosophy*
6 *Interior Design*
10 *Safety*
16 *Engines*
20 *Quality*
24 *Details*
30 *The new Beetle V5 Sport Edition*
34 *Optional Equipment*
42 *Accessories*
50 *Colours and Upholstery*
58 *Technical Specification*
62 *Standard Equipment*
64 *Glossary and Dimensions*
66 *Volkswagen Service*

The new *Beetle*.

Have you ever had a dream that won't go away? We had that sort of dream and found that lots of others did too. So we thought it would be a great idea to turn it into reality. The result is the new Beetle. We kept the spirit of the old Beetle – the unique shape,

the large smile and the lovable character. We fitted modern engines for power and efficiency; we ensured the highest build quality; then we added lots of standard equipment.



Model shown is 2.0 litre with optional factory-fitted sunroof.

With the new Beetle –
the world feels
a happier place.

Model shown is 2.0 litre.



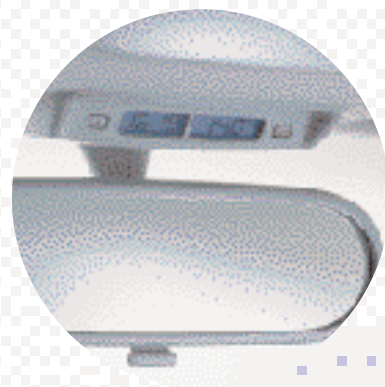
Round architecture: The cockpit of the new Beetle. Model shown is 2.0 litre.



The standard front electric windows include obstruction sensors for added safety.



The alarm has interior protection sensors.



Designed to the finest detail: A blue illuminated exterior temperature gauge and clock.

Look inside the new Beetle and you'll see it's no everyday design. Some of the Beetle's original features live on, such as the internal grab handles and the flower vase mounted on the dashboard.

There are items that combine the old with the new. For example, like the original

Beetle, the dashboard has a simple layout with one large instrument panel positioned centrally. At night-time it lights up with a modern blue and red illumination.

We finished the steering wheel, gear lever and handbrake in aluminium to give the interior a fresh and up-to-date look.

Then we showed how ergonomics and modern design go hand-in-hand by placing the switches and dials in the most easy-to-reach position, yet retaining the stylish layout of the interior.

Finally, we blended in a state-of-the-art 'Gamma' RDS radio/cassette player with 6 loudspeakers so that you can enjoy great in-car entertainment.

Good looks are not
the only *attraction*.

Safety is too.



Model shown is 2.0 litre.



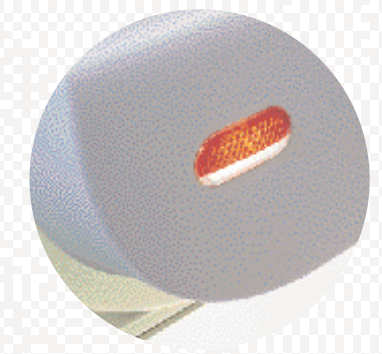
Beetle



The Electronic Stabilisation Programme – ESP – helps to prevent losing control in unstable driving conditions.



ABS helps you to steer around potential hazards, under hard braking, by preventing the wheels from locking.



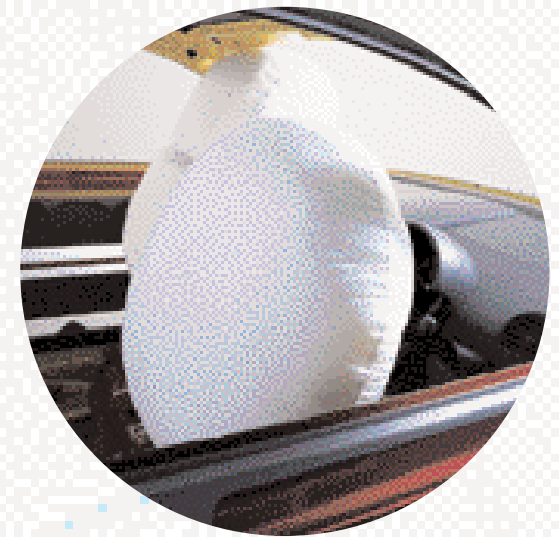
The door-fitted 'puddle' lights illuminate the path when exiting your Beetle at night-time.

We mention throughout this brochure how we have made the new Beetle thoroughly modern. Well here's a great example – ESP, Electronic Stabilisation Programme.

Every time you drive your Beetle, the ESP system constantly compares the actual movement of the car to predetermined values built into the ESP computer. Should a situation arise when the Beetle starts to oversteer or understeer, ESP will react in milliseconds by carefully braking the appropriate wheels and automatically adjusting the engine's output.

When the ESP system is operating, a warning light on the dashboard will alert the driver and serve as a warning to drive more cautiously.

Such technology will help provide maximum safety for both you and your passengers. ESP is very technically advanced, but it cannot defy the laws of physics and is not an excuse to drive too fast or recklessly for the conditions.



Driver and front passenger airbags are standard on the Beetle.



The standard side airbags help protect the driver and front seat passenger in the event of a side impact.

We know you'll enjoy driving the new Beetle, but we want you to feel totally safe and secure as well.

The chassis, for example, is strengthened at important points across the bodywork. Such joints absorb energy, and help to keep

the inner protective safety cell intact following a collision.

You will also have the reassurance of driver and front passenger front and side airbags along with front seat belt tensioners and head restraints.

The two rear passengers are protected by lap and diagonal seat belts and head restraints.

In addition, there is the innovative Isofix child seat mounting system. This allows

children's seats, equipped with the Isofix system, to be fitted securely to the Beetle's body via eyes between the rear seat backrest and seat base. Child seats with the Isofix system can be purchased from your Volkswagen retailer.

Performance and smoothness

in perfect harmony.



With 162 lbs/ft of torque, the new V5 2.3 litre 170 bhp petrol engine delivers exceptional performance.

What makes a truly great engine? For years our engineers have been asking just that and, with our latest petrol units, we believe we've found the answer. By developing high revolution engines, we've improved acceleration. And with a quiet and smooth supply of power, the Beetle is both comfortable and relaxing to drive.



There are now four exciting petrol engines and one of Volkswagen's revolutionary diesel engines, the 1.9 litre TDI PD 100 bhp, to choose from, each one offering a unique blend of performance and efficiency. How about the new super smooth improved V5 engine that benefits from 4 valves per cylinder, boosting power to 170 bhp, and achieving an exhilarating 0 - 62 mph in 8.7 seconds? Or perhaps the 1.8T with its powerful turbocharged technology developing 150 bhp.

Or maybe the refined 2.0 litre 115 bhp is more to your taste – an engine capable of 115 mph (where the law permits) that can return 32.5 mpg over the Combined cycle. The 1.9 litre TDI PD combines high power and torque with low fuel consumption and CO₂ emissions. This latest addition to the Beetle range has a top speed of 111 mph (where the law permits) and returns 53.3 mpg* on the Combined cycle.*

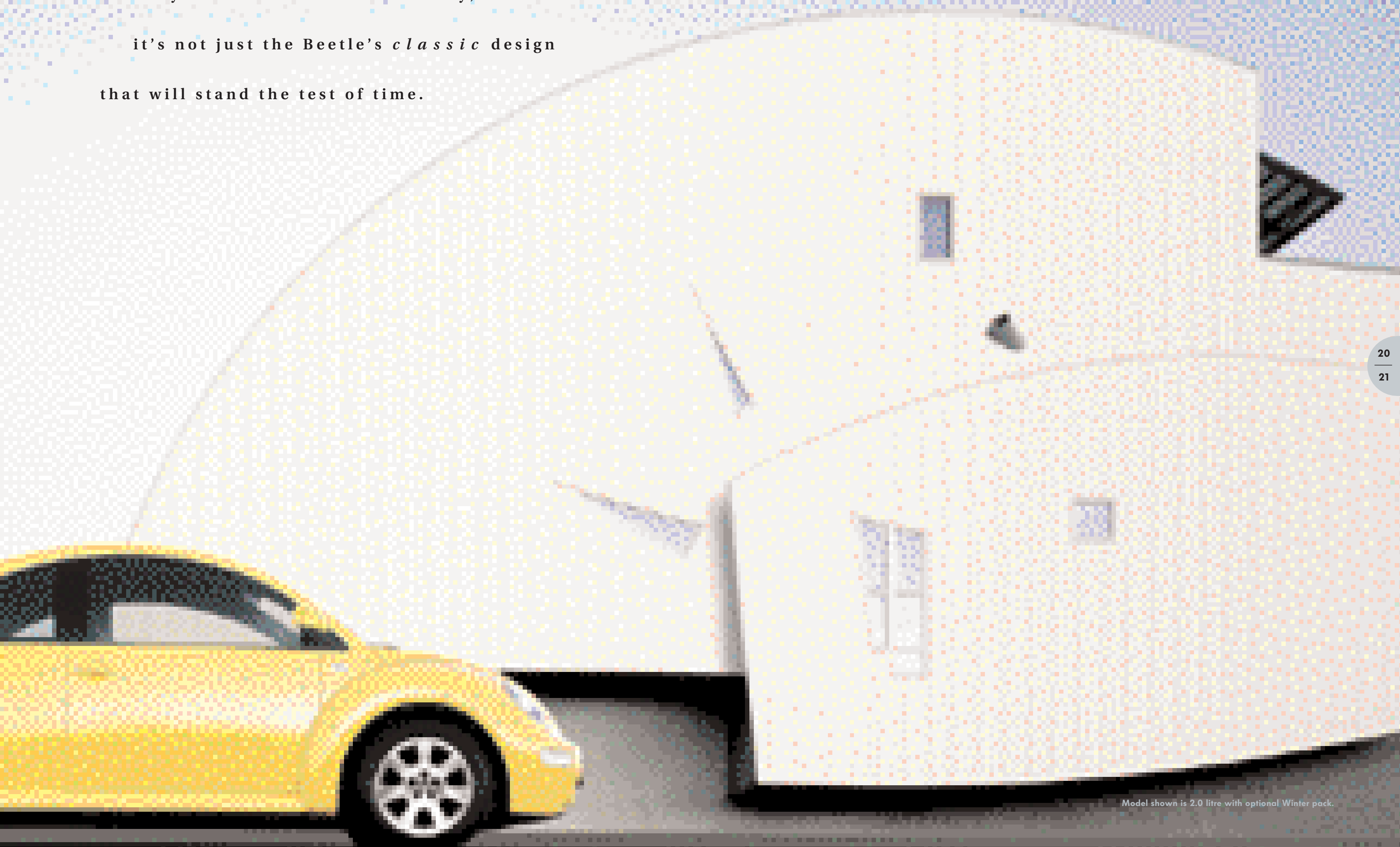
** According to EU Directive 99/94.*

Please see pages 58 and 59 for fuel consumption figures.

With a 12-year anti-corrosion warranty,

it's not just the Beetle's *classic* design

that will stand the test of time.





The narrow tolerances between the panels highlight the exceptional build quality of the Beetle.

Designing the Beetle inspired our engineers with great passion and pride. The original and legendary Beetle would be a hard act to follow. The new Beetle had to surpass the highest expectations.



The use of computerised construction techniques helps ensure the precise fit of every panel.

To become a real design classic, it had to look good for many years to come. So we coated the bodywork with zinc to prevent any possibility of corrosion. We're so convinced of such protective measures that we offer a 12-year warranty against rusting through from the inside out.

We designed the new Beetle down to the finest detail. Where and how the body parts were attached played an important role in the strength and symmetry of the new Beetle.



Perfect workmanship provides a perfect finish.

We used special bonding techniques to ensure body rigidity, combined with the close fit of the body panels.

Its classic curves are aerodynamically efficient, so you'll notice fuel consumption is minimised.

With the interior we wanted the quality of craftsmanship to show through.

The new Beetle is repair friendly as well. It's just another way of showing our attention to detail. The bumpers and wings are made of tough plastic and, should they be damaged, can be easily replaced.

An exceptional *design* deserves
an exceptional finish.

The new Beetle.



Model shown is 1.6 litre with optional 16" 'Route 66' alloy wheels.



Sporty 16" 'Route 66' alloy wheels with 205/55 tyres are standard on 2.0 litre and 1.8T models.



Classic 17" 'Daytona' alloy wheels with 225/45 tyres are standard on V5.

A unique exterior

and interior.



The boot release and petrol flap switches are located in the driver's door for ease of use.



Standard on all models is the 'Gamma' radio/cassette with RDS, 6 speakers and roof aerial. Air conditioning is optional on 1.6 litre models.

Beetle driving is about enjoyment. So to maximise your enjoyment we thought you'd appreciate loads of great features. Like ESP, power steering, central locking, electric windows and heated and electrically operated door mirrors. The driver's side door mirror is also fitted with wide angle glass to make overtaking safer.

You'll also find a powerful 'Gamma' radio/cassette player with 6 loudspeakers. It not only provides terrific stereo sound – it also blends perfectly with the Beetle's dashboard design.





The 'easy entry' seats slide forward to create easier access to the two rear seats.

We hope you'll agree that the new Beetle is somewhat special when you compare it with other cars on the road today.

Its individuality and practical solutions are part of its appeal.

For example, as the Beetle is a two door, we designed some special front seats that lift up and away, so it's easy to get into the back. This simple task is almost effortless due to the design detail of the Beetle.

We've also included numerous features for your convenience, such as the two removable cup holders incorporated into the centre console.

We allowed plenty of storage space, hence the net pockets on the front doors, the document pockets on the rear of the front seats and the lockable glove compartment.

On the practical side, we added illuminated vanity mirrors on both front sun visors (not 1.6 litre), two reading lights in the rear and on 1.9 TDI PD models and above, a 12 volt socket in the luggage area.

For comfort and safety the rear seats are fitted with head restraints. If you want more luggage space, you can drop the rear seat backrests down at the push of a button.



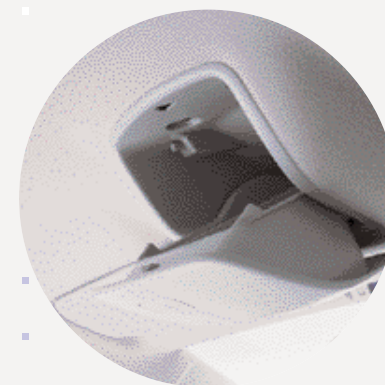
The driver's armrest is adjustable and houses a handy storage compartment. Leather upholstery is optional at extra cost.



The height and reach adjustable steering wheel ensures the optimum driving position.



The exterior rear-view mirrors are electrically controlled and heated.



The storage compartment above the rear-view mirror is handy for essential items (not available with the sunroof or 1.6 litre models).



Air conditioning supplies chilled air and is free of CFCs. Optional on 1.6 litre models and standard on all other models.



Standard on V5 and V5 Sport Edition models, the boot-mounted autochanger can hold up to 6 CDs and is fully controlled from the dash-mounted radio/cassette.

For the *discerning* driver.

The new Beetle V5 Sport Edition.





The *n e w* Beetle V5 Sport Edition.

When a car with the charisma of the Volkswagen Beetle develops a specification like the V5 Sport Edition, you can't help but have a great big smile on your face.

Powered by the 2.3 litre, 20 valve, V5 engine, its super smooth performance delivers

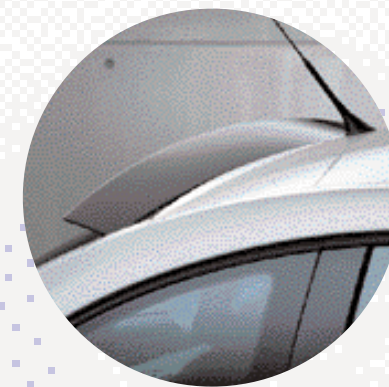
170 bhp, giving it power, driveability and speed. So much of it, in fact, that the V5 Sport Edition shares the speed activated rear spoiler currently employed on the V5 and 1.8T models.

It's got looks to match with striking 17 inch 'Calder' alloy wheels, front bumper-mounted

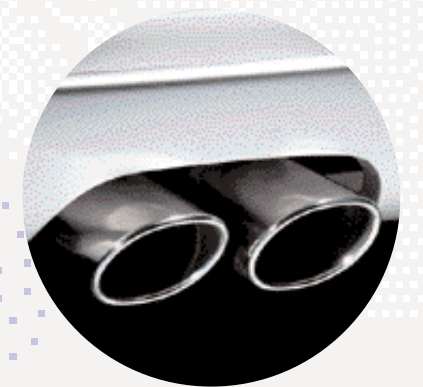
racing lights, twin exhaust pipes and those uniquely shaped bumpers both front and rear. There is a choice of Black or Reflex Silver Metallic exterior paint finishes and inside there is an aluminium trim with two-tone leather sports seats and drilled aluminium racing pedals.



Drilled aluminium racing pedals are a sign of things to come.



The speed sensitive rear spoiler automatically deploys and retracts at preset speeds.



Mean looking twin exhausts are a stylish feature of the Beetle V5 Sport Edition.

The new Beetle:
as individual as you like.





The optional leather interior provides an air of exclusivity. Please note that all Beetles are fitted with front electric windows as standard.

The optional leather upholstery pack

Optional leather upholstery perfectly complements the unique interior of the new Beetle. The optional leather upholstery pack includes leather rimmed steering wheel, gear lever gaiter (not auto), handbrake grip and individually heated front seats with five temperature settings. You can choose between cream, grey or black leather upholstery.



Heated front seats are included with the optional leather interior.



The handbrake lever and gear lever gaiter are colour co-ordinated with the leather upholstery option.



The optional electric glass sunroof has an automatic sun blind incorporated.

Electric glass sunroof

This sunroof is easy to operate thanks to automatic pre-selection. Just turn the dial and let the sunroof open to your desired setting.

When the sunroof is open, a wind deflector automatically extends to reduce buffeting and a blind prevents dazzling from

the sun. For added safety, an anti-trapping device immediately stops the roof if it meets resistance.

Specify the electric glass sunroof and the driver's side grab handle is replaced with a convenient sunglasses case.



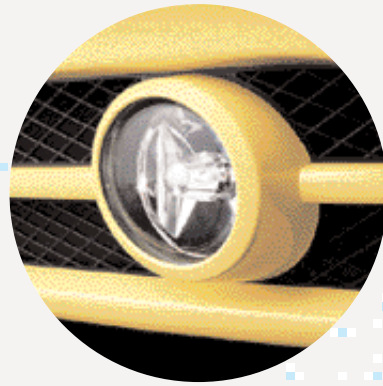
Split folding rear seats

The optional split folding rear seats give greater flexibility should you need to carry bulky items of luggage and a rear seat passenger. Optional on all models except the V5 Sport Edition.

Split folding rear seats provide greater practicality.



The boot-mounted autochanger can hold up to 6 CDs and is fully controlled from the dash-mounted radio/cassette.



Included in the optional Winter pack, the powerful front fog lights are integrated below the bumper.



Heated windscreen washer jets are included in the optional Winter pack.



Stylish 15" 'Monterey' alloy wheels with 195/65 R15 tyres. Available on 1.6 litre and 1.9 TDI PD models.



Sporty 16" 'Route 66' alloy wheels with 205/55 R16 tyres. Available on 1.6 litre and 1.9 TDI PD models.



Classic 17" 'Daytona' alloy wheels with 225/45 tyres. Available on 2.0 litre and 1.8T models.

CD autochanger

The optional 6 CD autochanger is the ideal addition to the standard 'Gamma' radio/cassette. Mounted in the boot, it is out of sight from the opportunist thief. Standard on V5 and V5 Sport Edition models.

The Winter pack

Throughout the coldest months, this pack provides added safety and comfort.

Front fog lights improve visibility on the road ahead and are neatly integrated under the front bumper. Further safety measures include heated windscreen washer jets to help prevent freezing in sub-zero temperatures.

For your comfort, this pack contains heated front seats. Each seat is individually controlled and quickly warms to one of the five pre-programmed temperature settings.



Heated front seats are included with the optional Winter pack.

Wheels

A choice of alternative designs are available to create a distinctive and individual finish to your new Beetle.

All wheels are designed and constructed to the highest standards and are fitted with anti-theft wheel bolts.

The Weather pack

The automatic dimming rear-view mirror, which darkens if a following car's lights are too high, forms part of the optional Weather pack. In addition, a rain sensor regulates the speed of the wipers depending on the weather conditions.

Cruise control

On long motorway journeys cruise control provides a more relaxing drive. Simply set a speed and it will be constantly maintained without touching the accelerator. Pressing either the brake or clutch pedal immediately turns off the cruise control.



A rain sensor detects moisture and adjusts the speed of the windscreen wipers accordingly.



Cruise control allows a constant speed to be maintained.



Colour Concept

The new Beetle is a truly distinctive car, but choose a Colour Concept and you'll really stand out from the crowd. It's not just the choice of vibrant colours, it's the comprehensive specification that makes it such a fun car to own and drive.

You can choose from three stunning exterior paint finishes – Black, Red or Raven Blue metallic. To complement these eye-catching colours are stylish alloy wheels. On the 2.0 litre and 1.8T models you'll find 6J x 16 'San Diego' design alloys fitted with 205/55 R16 tyres, whilst the V5 flaunts 7J x 17 'Daytona' wheels with 225/45 R17 tyres.

Slide into the driver's seat of the Beetle Colour Concept and you'll notice the extreme support of the front sports seats. Not only are they trimmed in leather but, come those cold winter days, you'll really appreciate their electrically heated feature. The bright colour theme continues throughout the interior, the Colour Concept's sumptuous

The extensive leather trim of the Colour Concept's interior looks stunning in black and red.

appeal being accentuated by black leather trim. In contrast, the central seat sections, door panel centres and the stitching on the leather steering wheel trim are matched to the exterior paintwork.



Liven things up with a Raven Blue trim.



Keep it subtle with an all black interior.

Accessories to *complement*

your Beetle and your lifestyle.

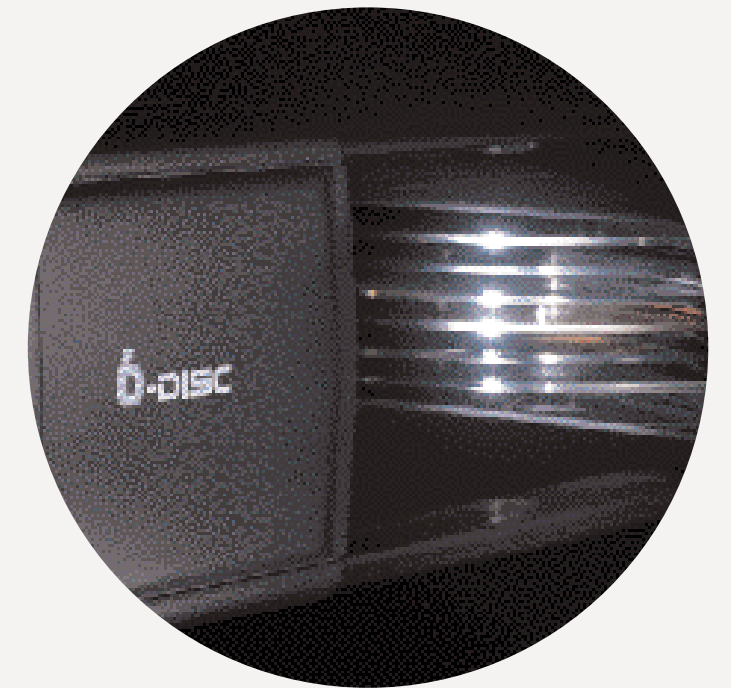


Model shown features Toccata 7J x 17 alloy wheels (Part No. 1J0 071 492 666).

Evoló 7½J x 17.
Part No. 1J6 071 492 666



Wooden gear knob.
Part No. 1J0 064 225 B



Boot-mounted 6 CD autochanger.
Part No. 1J5 057 111 A

Sports accessories

The new Beetle has a character all of its own. We kept the personality that so many loved in the original Beetle, but brought everything else right up to date.

The choice of alloy wheels not only complements the unique style of the Beetle, they also allow you to express your own individuality.

If you want to personalise your Beetle further, how about a sporty tailpipe silencer, or a stylish gear knob? The gear knob is available in either a traditional wooden design or a hi-tech aluminium-look.

Looks good. Sounds good

There's no better way to enjoy driving the new Beetle than whilst listening to your favourite music. Six of your best CDs can be on hand in the boot-mounted autochanger, or you could choose upgraded speakers to enhance acoustics.

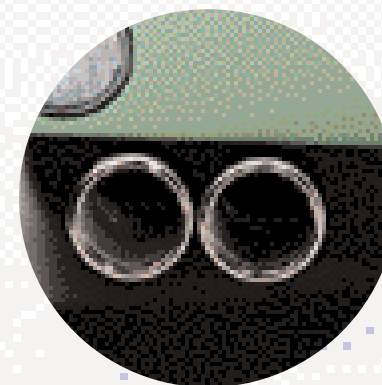
With increasingly sophisticated electronics, it's worth remembering that, when fitted by your Volkswagen retailer, you are assured of a quality installation that will be fully compatible with your Beetle's existing electrics.



Rave 6½J x 16.
Part No. 1C0 071 491 666



5 Star Raceline 6½J x 16.
Part No. 1J6 071 491 666



Tailpipe silencer.
Part No. 8L0 071 901
(2.0 litre model only)



Bobsy G1 ISOFIX DUO child seat with 2 positive fixing points to the vehicle chassis. Suitable for children of approximately 8 months to 4 years or a weight of 9-18 kg. Part No. 00V 019 909



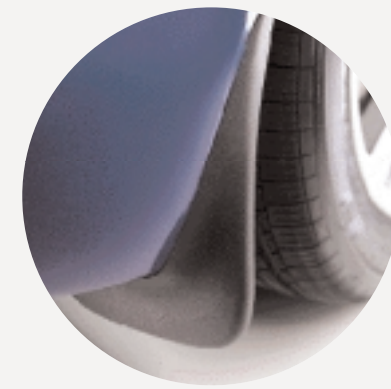
Bobsy G2 suitable for children of approximately 3½ to 7 years or a weight of 15-25 kg. Part No. 000 019 903 BA



Carpet mat sets – with logo (set of 4).
Black Part No. ZGB 1C2 061 225 B
Beige Part No. ZGB 1C2 061 229 B
Grey Part No. ZGB 1C2 061 227 B



Rubber mat sets.
Front Part No. 1J2 061 501 A 041
Rear Part No. 1J0 061 511 041



Mudflaps.
Front Part No. 1C0 075 111
Rear Part No. 1C0 075 101



Bobsy G1-3 suitable for children of approximately 9 months to 12 years or a weight of 9-36 kg. Part No. 000 019 902 B

Child protection

We designed and developed the Beetle with exceptional safety standards. This high level of protection also covers the youngest members of your family who are often the most vulnerable in a collision.

We are amongst the first manufacturers to fit the Isofix child safety system that holds a child seat, through 2 position fixing points, to the vehicle's

chassis. This not only ensures greater rigidity, but reduces the time to fit a child seat because there's no need for threading seat belts. There is also a complete range of child safety seats for use in rear and forward facing positions.



Bobsy G3 booster seat with removable back. Suitable for children of approximately 4 to 12 years or a weight of 17-36 kg. Base Part No. 000 019 904 B Sleep support Part No. 000 019 905 B

Protection and car care

As a proud owner, we appreciate that you'll want to maintain your Beetle in first-class condition. To help protect your paintwork, we've designed some special contoured mudflaps. As they've been developed specifically for the Beetle, they fit easily in the ideal position.

To maintain your Beetle's interior in first-class condition, you'll find a wide selection of products that offer the highest level of protection. Tailor-made carpet mats, rubber mats and a flexible loadliner all help to restrict damage and dirt to the original floor coverings.



Flexible loadliner.
Part No. 1C0 061 160 A

Please note that 'Domino' cloth upholstery is no longer available and has been replaced by 'Canasta' cloth. Please see pages 54 and 55 for details.



Roof bars.
Part No. 1C0 071 126

Outdoor Beetle pursuits

Through its unique design and outgoing character, we've designed the new Beetle to complement your lifestyle.

So whether you're off skiing, cycling, windsurfing or surfing – why not take your Beetle along too?

The roof system is typical of Volkswagen's attention to detail. It's been wind tunnel tested to ensure handling and safety remain unaffected and we've designed it with quick release catches so it can be quickly fitted and removed.

Should you be carrying a bike, the hydraulic bicycle lift is a useful asset. It effortlessly positions bikes in place and helps prevent any accidental damage to the bodywork. There is also a lockable bicycle holder available (Part No. 6Q0 071 128).



Ski/Snowboard holder.
Maximum 4 pairs skis/2 snowboards.
Part No. 3B0 071 129
Maximum 6 pairs skis/4 snowboards.
Part No. 3B0 071 129 A



Windsurf/Surfboard holder.
Part No. 445 071 127



Hydraulic bicycle lift.
Part No. 4D0 071 128 D

Toccata 7J x 17.
Part No. 1J0 071 492 666

Life is not *always* black and white.

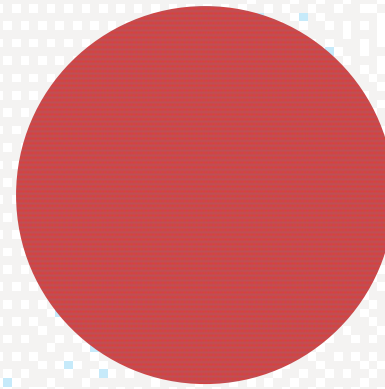


Exterior paintwork.

Non-Metallic paint



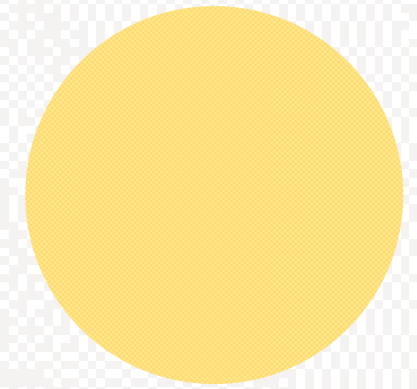
Black (A1)



Red (P2)



Campanella White (R6)

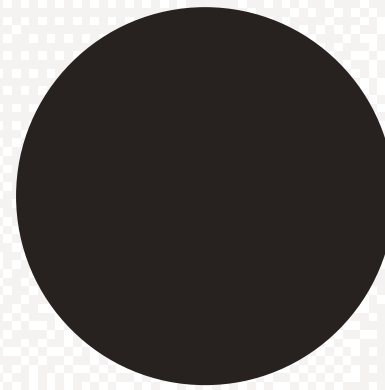


Sunflower (T1)*

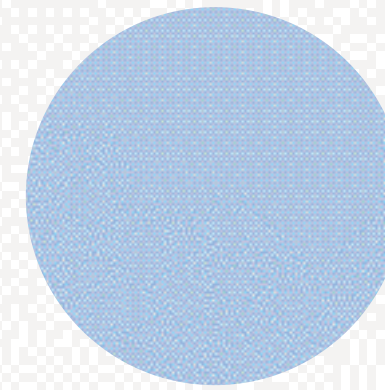
Metallic paint*



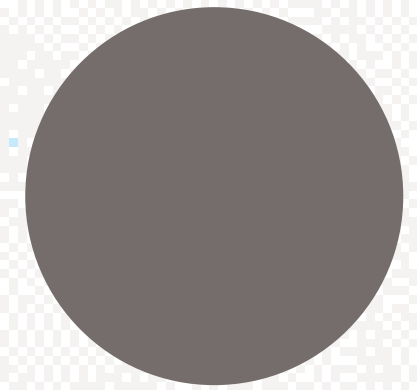
Cyber Green (L9)



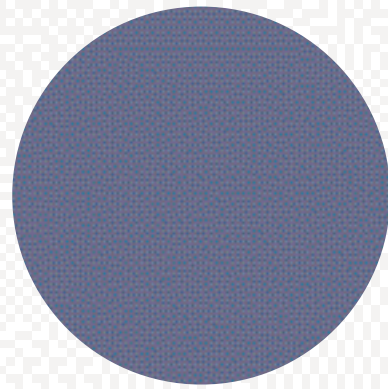
Alaska Green (V7)



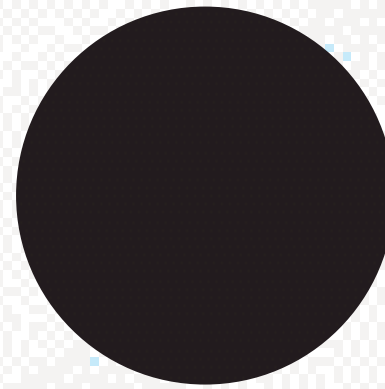
Speed Blue (V8)



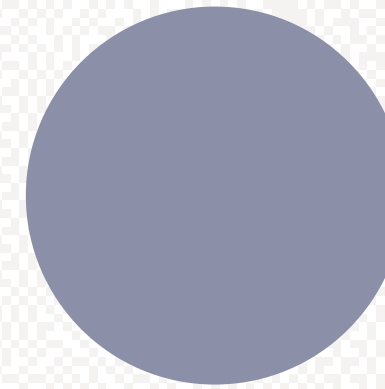
Platinum Grey (2R)



Raven Blue (5Z)



Royal Navy (7W)



Reflex Silver (8E)

Please note: The print processes do not allow exact reproduction of the paint colours.

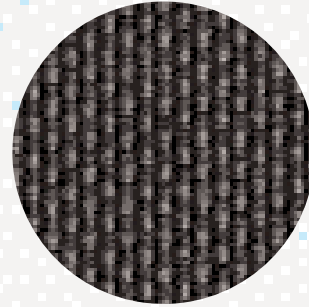
For further details, please contact your Volkswagen retailer.

* Sunflower paint is optional at extra cost on all models and not available on V5 Sport Edition.

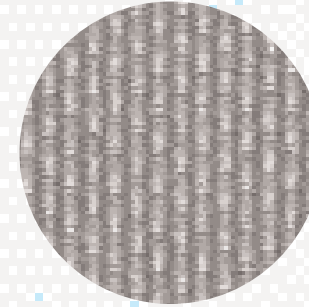
Metallic paints are optional at extra cost. Reflex Silver Metallic paint is standard on the V5 Sport Edition.

A choice of upholstery.

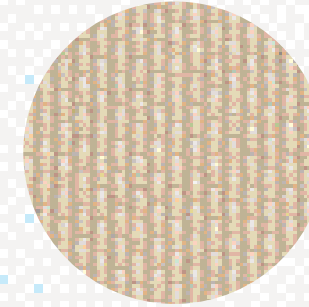
All models¹
'Canasta' cloth



Black (WE)

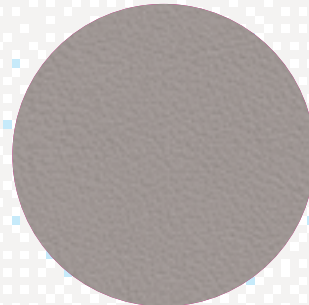


Flannel Grey (WF)



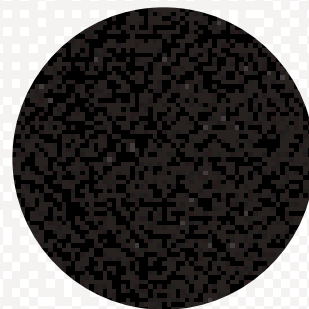
Cream (WG)

V5 Sport Edition
Two-tone sports seats in leather²

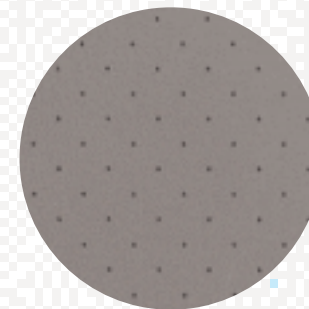


Black/Crystal Grey (71)

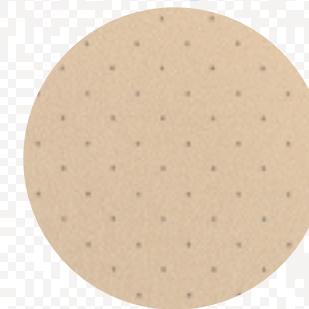
Optional leather¹



Black (ZA)*

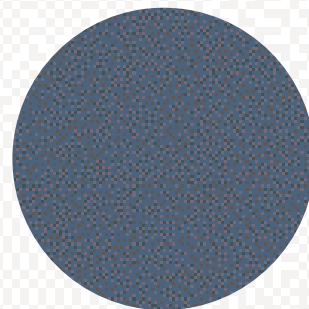


Flannel Grey (ZC)*



Cream (ZD)*

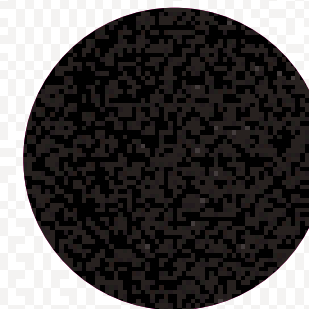
2.0 litre, 1.8T, V5¹
Optional Colour Concept
Vienna sports seats in leather



Black/Blue (QC)*



Black/Red (QD)*



Black/Black (QE)*

Please note: The print processes do not allow exact reproduction of the upholstery colours.

For further details, please contact your Volkswagen retailer.

¹ Not available on V5 Sport Edition.

² Available on V5 Sport Edition only.

* Optional at extra cost.

Colour combinations.

				Black A1	Red P2	Campanella White R6	Sunflower T1*	Cyber Green Metallic L9*	Alaska Green Metallic V7*	Speed Blue Metallic V8*	Platinum Grey Metallic 2R*	Raven Blue Metallic 5Z*	Royal Navy Metallic 7W*	Reflex Silver Metallic 8E*
Seat upholstery		Carpets	Dashboard											
All models – ‘Canasta’ cloth¹														
Black	WE	Black	Black/Flannel Grey	●	●	●	●	●	●	●	●	●	●	●
Flannel Grey	WF	Flannel Grey	Black/Flannel Grey	●	●	●	●	●	●	●	●	●	●	●
Cream	WG	Cream	Black/Cream	●	●	●	–	●	●	–	●	●	●	–
V5 Sport Edition – Two-tone sports seats in leather²														
Black/Crystal Grey	Z1	Black	Black/Silver	●	–	–	–	–	–	–	–	–	–	●
Optional leather (perforated)¹														
Black	ZA	Black	Black/Flannel Grey	○	○	○	○	○	○	○	○	○	○	○
Flannel Grey	ZC	Flannel Grey	Black/Flannel Grey	○	○	○	○	○	○	○	○	○	○	○
Cream	ZD	Cream	Black/Cream	○	○	○	–	○	○	–	○	○	○	–
2.0 litre, 1.8T, V5 – Optional Colour Concept Vienna sports seats in leather¹														
Black/Blue	QC	Black/Blue	Black	●	–	–	–	–	–	–	–	●	–	–
Black/Red	QD	Black/Red	Black	●	●	–	–	–	–	–	–	–	–	–
Black/Black	QE	Black/Black	Black	●	●	–	–	–	–	–	–	●	–	–

● Standard ○ Optional at extra cost – Not available

Please note:

* Sunflower paint is optional at extra cost on all models and not available on V5 Sport Edition.

Metallic paints are optional at extra cost. Reflex Silver Metallic paint is standard on the V5 Sport Edition.

¹ Not available on V5 Sport Edition.

² Available on V5 Sport Edition only.

Technical specification.

Engine:	1.6 litre 102 bhp	1.9 litre TDI PD 100 bhp	2.0 litre 115 bhp	1.8 Turbo 150 bhp	V5, V5 Sport Edition – 2.3 litre 170 bhp
	Front transversely mounted. 4 cylinder in-line – petrol. Cast iron cylinder block. Alloy cylinder head with single overhead camshaft	Front transversely mounted. 4 cylinder in-line – diesel. Cast iron cylinder block. Alloy cylinder head with single overhead camshaft	Front transversely mounted. 4 cylinder in-line – petrol. Cast iron cylinder block. Alloy cylinder head with single overhead camshaft	Front transversely mounted. 4 cylinder in-line – petrol. Cast iron cylinder block. Alloy cylinder head with double overhead camshaft	Front transversely mounted. 5 cylinder 15° 'V' – petrol. Cast iron cylinder block. Alloy cylinder head with single overhead camshaft per bank
Number of valves	2 per cylinder	2 per cylinder	2 per cylinder	5 per cylinder	4 per cylinder
Cubic capacity, ltrs/cc	1.6/1596	1.9/1896	2.0/1984	1.8/1781	2.3/2324
Bore/stroke, mm	81.0/77.4	79.5/95.5	82.5/92.8	81.0/86.4	81.0/90.2
Max. output, bhp/kw at rpm	102/75 5600	100/74 4000	115/85 5200	150/110 5800	170/125 6200
Max. torque, lbs.ft/Nm at rpm	109/148 3800	177/240 1800	125/170 2400	162/220 2000	162/220 3200
Compression ratio	10.5 : 1	19.0 : 1	10.5 : 1	9.5 : 1	10.8 : 1
Induction	Electronic multipoint injection, variable inlet manifold	Direct injection – with unit injectors turbocharged with intercooler	Electronic multipoint injection, single cylinder injection	Electronic multipoint injection, single cylinder injection	Electronic multipoint injection, variable inlet manifold
Ignition	Electronic	Electronic	Electronic	Electronic	Electronic
Exhaust emission control	Catalytic converter lambda control	Catalytic converter	Catalytic converter lambda control	Catalytic converter lambda control	Catalytic converter lambda control
Fuel grade, minimum	Premium 95 RON unleaded	Diesel	Premium 95 RON unleaded	Premium 95 RON unleaded	Premium 95 RON unleaded
Battery, V/A (Ah)	12/280 (60)	12/340 (70)	12/280 (60)	12/280 (60)	12/280 (60)
Alternator, amps	70	120	90	120	120

Transmission:	1.6 litre 102 bhp		1.9 litre TDI PD 100 bhp	2.0 litre 115 bhp		1.8 Turbo 150 bhp		V5, V5 Sport Edition – 2.3 litre 170 bhp
	Front wheel drive		Front wheel drive	Front wheel drive		Front wheel drive		Front wheel drive
Gearbox	5 speed manual	4 speed auto†	5 speed manual	5 speed manual	4 speed auto	5 speed manual	4 speed auto†	5 speed manual

Performance (with half payload):	1.6 litre 102 bhp		1.9 litre TDI PD 100 bhp	2.0 litre 115 bhp		1.8 Turbo 150 bhp		V5, V5 Sport Edition – 2.3 litre 170 bhp
Top speed, mph (km/h) (where law permits)	111 (179)	109 (175)	111 (179)	115 (185)	113 (182)	126 (203)	124 (199)	131 (211)
Acceleration, secs 0 - 62 mph	11.6	13.2	12.4	10.9	12.9	9.0	9.8	8.7
ABI insurance group	9	9	9	11	11	14	14	15

Environmental information:	1.6 litre 102 bhp		1.9 litre TDI PD 100 bhp	2.0 litre 115 bhp		1.8 Turbo 150 bhp		V5, V5 Sport Edition – 2.3 litre 170 bhp
Official fuel consumption according to EU Directive 99/94, mpg/ltr per 100 km								
Urban	26.9/10.5	24.6/11.5	41.5/6.8	23.7/11.9	21.2/13.3	25.4/11.1	21.9/12.9	22.8/12.4
Extra-urban	47.1/6.0	43.5/6.5	64.2/4.4	41.5/6.8	38.7/7.3	43.5/6.5	39.8/7.1	41.5/6.8
Combined	36.7/7.7	34.0/8.3	53.3/5.3	32.5/8.7	29.7/9.5	34.4/8.2	30.7/9.2	31.7/8.9
Fuel tank capacity, galls/ltrs	12/55	12/55	12/55	12/55	12/55	12/55	12/55	12/55
Official CO ₂ emission, g/km*	185	199	143	209	228	197	221	214
Noise, dB	73	69	72	72	73	72	74	74

* Please see page 67 for further information on CO₂ emissions.

† Please note these models are only available from stock and are not available to factory order.

Specifications subject to change without notice. Information correct as at 1 June 2002. Please note: All data subject to manufacturer's tolerances.

Technical specification.

	1.6 litre 102 bhp	1.9 litre TDI PD 100 bhp	2.0 litre 115 bhp	1.8 Turbo 150 bhp	V5, V5 Sport Edition – 2.3 litre 170 bhp			
Running gear:								
Front axle	Independent McPherson suspension struts and coil springs. Anti-roll bar. Track stabilising steering geometry		Independent McPherson suspension struts and coil springs. Anti-roll bar. Track stabilising steering geometry					
Rear axle	Torsion beam trailing arm with track-correcting bearings. Anti-roll bar		Torsion beam trailing arm with track-correcting bearings. Anti-roll bar					
Steering	Power-assisted, maintenance-free rack and pinion. Collapsible steering column		Power-assisted, maintenance-free rack and pinion. Collapsible steering column					
Brakes system	ABS Anti-lock brakes. Diagonally split circuits. Servo assisted. EBD Electronic Brake-pressure Distribution		ABS Anti-lock brakes. Diagonally split circuits. Servo assisted. EBD Electronic Brake-pressure Distribution					
Front	Ventilated discs	Ventilated discs	Ventilated discs	Ventilated discs	Ventilated discs			
Rear	Discs	Discs	Discs	Discs	Discs			
Turning circle, ft/m	35.8/10.9	35.8/10.9	35.8/10.9	35.8/10.9	35.8/10.9			
Wheels and tyres:								
Wheel size	6½J x 16	6½J x 16	6½J x 16	6½J x 16	7J x 17 ¹			
Wheel type	Steel	Steel	Alloy 'Route 66'	Alloy 'Route 66'	Alloy 'Daytona' ¹			
Tyre size	205/55 R16W	205/55 R16 91W	205/55 R16 91W	205/55 R16 91W	225/45 R17 91W/Y ¹			
Spare wheel	Full size steel	Full size steel	Full size steel	Full size steel	Full size steel			
Weights, lbs/kgs:								
	5 speed manual	4 speed auto [†]	5 speed manual	5 speed manual	4 speed auto [†]	5 speed manual		
Unladen weight	2820/1279	2886/1309	3016/1368	2886/1309	2913/1321	2981/1352	3030/1374	3047/1382
Gross vehicle weight	3572/1620	3638/1650	3771/1710	3638/1650	3693/1675	3749/1700	3793/1720	3815/1730
Payload	752/341	752/341	754/342	752/341	781/354	767/348	763/346	767/348
Axle load limits, lbs/kgs:								
Front	2029/920	2095/950	2227/1010	2073/940	2139/970	2183/990	2227/1010	2249/1020
Rear	1764/800	1764/800	1764/800	1764/800	1764/800	1764/800	1764/800	1764/800
Trailer load limits, lbs/kgs:								
Braked 12% incline	2205/1000		2205/1000	2205/1000		2205/1000		2205/1000
Unbraked	1323/600		1323/600	1323/600		1323/600		1323/600
Towbar load limit	165/75		165/75	165/75		165/75		165/75
Max. roof load	110/50		110/50	110/50		110/50		110/50
Max. luggage capacity, cu.ft (litres):								
	VDA measuring method using 200 x 100 x 50 mm blocks							
With rear seat upright	7.4 (209)	7.4 (209)	7.4 (209)	7.4 (209)	7.4 (209)	7.4 (209)	7.4 (209)	7.4 (209)
With rear seat folded	27.2 (769)	27.2 (769)	27.2 (769)	27.2 (769)	27.2 (769)	27.2 (769)	27.2 (769)	27.2 (769)

¹ V5 Sport Edition models have 7J x 17 'Calder' alloy wheels with 225/45 R17 91W/Y tyres and anti-theft wheel bolts.

[†] Please note these models are only available from stock and are not available to factory order.

Specifications subject to change without notice. Information correct as at 1 June 2002. Please note: All data subject to manufacturer's tolerances.

Standard equipment.

Safety and Security:

		1.6	1.9 TDI PD	2.0	1.8T	V5	V5 Sport Edition
ABS:	Anti-lock brakes	●	●	●	●	●	●
Airbags:	Driver airbag	●	●	●	●	●	●
	Front passenger airbag	●	●	●	●	●	●
	Front seat side impact airbags	●	●	●	●	●	●
Alarm:	With interior protection	●	●	●	●	●	●
Body:	Fully galvanised with 12-year anti-corrosion warranty	●	●	●	●	●	●
	Door side impact protection	●	●	●	●	●	●
	Rigid safety cell with front and rear crumple zones	●	●	●	●	●	●
Central locking:	With security protection	●	●	●	●	●	●
	Radio wave remote control	●	●	●	●	●	●
Electronic engine immobiliser, coded transponder		●	●	●	●	●	●
ESP:	Electronic Stabilisation Programme	●	●	●	●	●	●
Head restraints:	Front, height-adjustable	●	●	●	●	●	●
	Rear, removable	●	●	●	●	●	●
High level third brake light		●	●	●	●	●	●
Isofix child seat preparation (2 outer in rear seat)		●	●	●	●	●	●
Laminated windscreen		●	●	●	●	●	●
Luggage cover, removable		●	●	●	●	●	●
Seat belts:	Front three-point height-adjustable seat belts with tensioners	●	●	●	●	●	●
	Rear outer three-point seat belts (2 seats only)	●	●	●	●	●	●
Steering wheel:	Safety padded steering wheel	●	●	●	●	●	●

Functional Equipment:

		1.6	1.9 TDI PD	2.0	1.8T	V5	V5 Sport Edition
Cruise control		○	○	○	○	○	○
Door mirrors:	Electrically heated and adjustable, housing painted in body colour	●	●	●	●	●	●
Dust and pollen filter		●	●	●	●	●	●
Front fog lights		○ ¹	○ ¹	○ ¹	●	●	●
Headlights:	Electric height adjustment	●	●	●	●	●	●
	Combined headlight and fog light switch	●	●	●	●	●	●
Heated rear window		●	●	●	●	●	●
In-car entertainment:	'Gamma' radio/cassette with 4 digit security code and flashing LED	●	●	●	●	●	●
	4 x 20 watt output with FM/MW manual/seek tuning, RDS/EON	●	●	●	●	●	●
	Logic tape deck with 'Dolby' and MSS Music Search System	●	●	●	●	●	●
	GALA, adjustable vehicle speed-responsive volume control	●	●	●	●	●	●
	6 speakers, 4 front, 2 rear and detachable roof aerial	●	●	●	●	●	●
CD autochanger:	6 disc, boot-mounted	○	○	○	○	●	●
Power-assisted steering		●	●	●	●	●	●
Steering column:	Height and reach adjustable	●	●	●	●	●	●
Sunroof, glass electric:	Includes silicone-damped grab handle on front passenger's side and roof-mounted sunglasses case on driver's side	○	○	○	○	○	○
Warning buzzer for lights if left on		●	●	●	●	●	●
Windows:	Electric front with roll back safety system	●	●	●	●	●	●
Wipers:	Two speed with wash/wipe	●	●	●	●	●	●
	Intermittent wipe with 4 position delay	●	●	●	●	●	●
	Concealed windscreen washer jets with fan water spray	●	●	●	●	●	●
12V socket in centre console and luggage area (centre console only on 1.6 litre models)		●	●	●	●	●	●

Interior Equipment and Styling:

		1.6	1.9 TDI PD	2.0	1.8T	V5	V5 Sport Edition
Anti-dazzle rear-view mirror		●	●	●	●	●	●
Carpet mats, colour-coded		○	●	●	●	●	●
Cup holder:	Front x 2	●	●	●	●	●	●
	Rear x 1	●	●	●	●	●	●
Driver and passenger sun visors		●	●	●	●	●	●
Fuel filler flap:	Electrically operated via switch in driver's door	●	●	●	●	●	●
Heating:	Air conditioning, manual	○	●	●	●	●	●
Instruments:	Speedo and rev counter, electronic odometer and trip, fuel and temperature gauge, low fuel warning light, blue instrument illumination. Roof-mounted digital clock and outside temperature display	●	●	●	●	●	●
Interior lighting:	Front, mounted in rear-view mirror housing with time delay	●	●	●	●	●	●
	Rear reading lights x 2	●	●	●	●	●	●
Leather steering wheel, gear knob, gaiter and handbrake grip		-	-	-	●	●	●
Load sill protection		●	●	●	●	●	●
Luggage compartment light		●	●	●	●	●	●
Seating:	Front, easy entry with height adjustment. Seat back storage pockets	●	●	●	●	●	●
	Heated front seats	○ ¹	○ ¹	○ ¹	○ ¹	○ ¹	●
	Rear, backrest and base with fold down facility	●	●	●	●	●	●
Storage:	Glovebox illuminated, lockable	●	●	●	●	●	●
	Front door storage nets	●	●	●	●	●	●
	Roof-mounted storage area (not with sunroof)	-	●	●	●	●	●
Tailgate:	Electrically operated via switch in driver's door and key	●	●	●	●	●	●
Upholstery:	'Canasta' cloth	●	●	●	●	●	-
	Leather, including heated front seats	○	○	○	○	○	-
	Leather, two-tone including heated front sports seats	-	-	-	-	-	●
Vanity mirrors:	Illuminated on driver's and passenger's side	-	●	●	●	●	●
Vase		●	●	●	●	●	●

Exterior Equipment and Styling:

		1.6	1.9 TDI PD	2.0	1.8T	V5	V5 Sport Edition
Bumpers	Painted in body colour	●	●	●	●	●	●
	Front and rear, uniquely shaped	-	-	-	-	-	●
Door handles, painted in body colour		●	●	●	●	●	●
Heat insulating tinted glass		●	●	●	●	●	●
Metallic paint (Reflex Silver is the only Metallic paint available on V5 Sport Edition)		○	○	○	○	○	●
Roof spoiler:	Speed dependent	-	-	-	●	●	●
Wheels:	6½J x 16 steel wheels, 205/55 R16W tyres with 16" wheel trims	●	● ²	-	-	-	-
	6½J x 16 'Route 66' alloy wheels with 205/55 R16 91W tyres and anti-theft wheel bolts	○	○	●	●	-	-
	7J x 17 'Daytona' alloy wheels with 225/45 R17 91W/Y tyres and anti-theft wheel bolts	-	-	○	○	●	-
	7J x 17 'Calder' alloy wheels with 225/45 R17 91W/Y tyres and anti-theft wheel bolts	-	-	-	-	-	●
	Steel, full size spare wheel	●	●	●	●	●	●

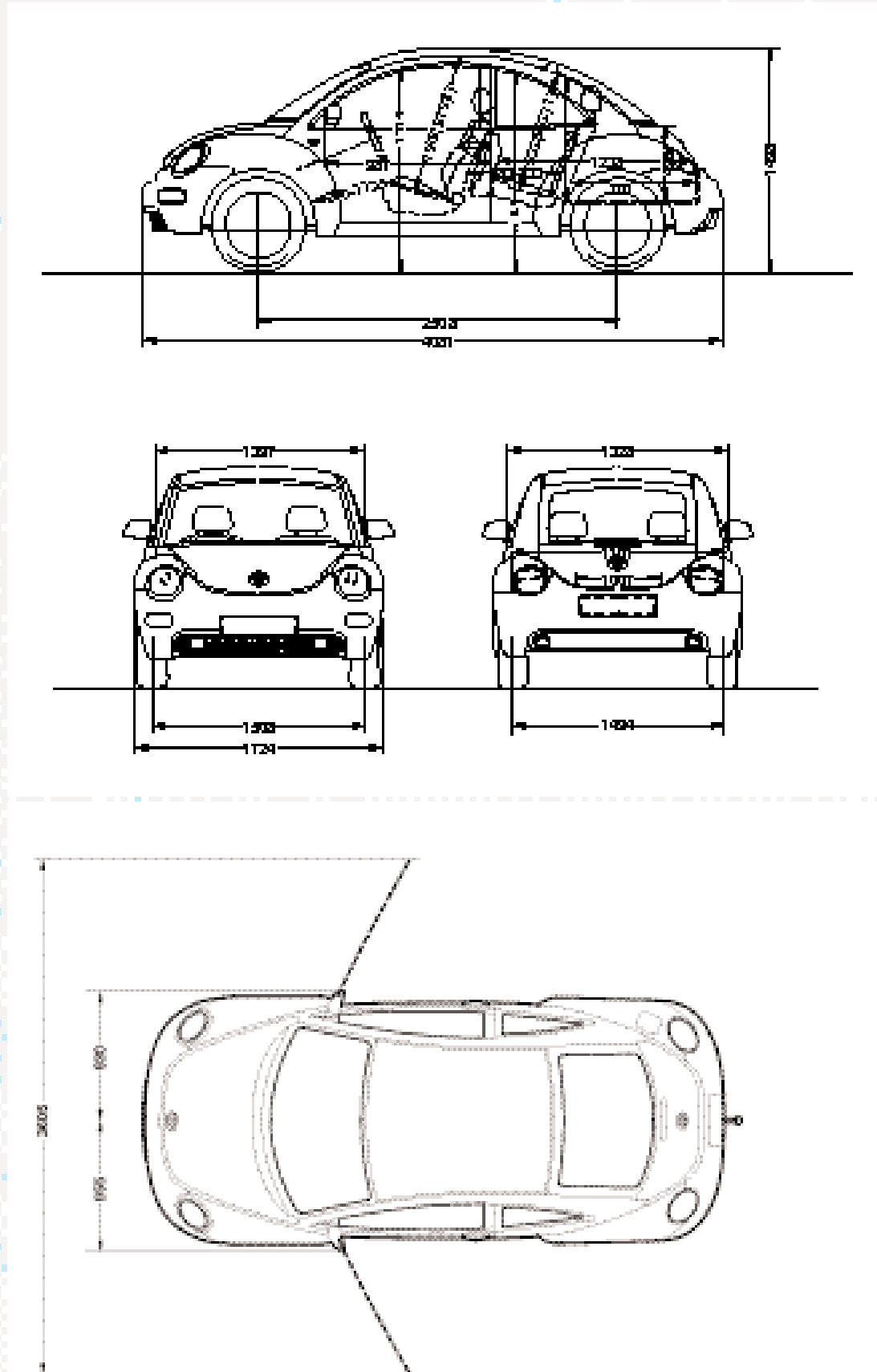
● Standard ○ Optional - Not available

¹ Part of Winter and leather upholstery packs.

² 1.9 TDI PD models have 205/55 R16 91W tyres.

Exterior dimensions.

The Beetle



All figures in millimetres.

Glossary.

ABS (Anti-lock Braking System)

The ABS system prevents the wheels from locking during heavy or emergency braking, enabling the vehicle to remain steerable. When braking, wheel speed sensors measure the road wheel speed and, should one or more wheels start to lock, the system reduces brake pressure to that wheel.

EBD (Electronic Brake-pressure Distribution)

Electronic, more sophisticated means of regulating the ratio of front/rear brake pressure. Works in conjunction with ABS.

Electronic Engine Immobiliser

Each car has a unique 'code transponder' fitted within the ignition key. When an attempt is made to start the engine, the engine management system interrogates the transponder and if the incorrect code is received (i.e. the wrong key is used), the engine will not run.

EON (Enhanced information concerning Other Networks)

Ensures that all traffic announcements within a traffic programme area are put through.

ESP (Electronic Stabilisation Programme)

ESP is designed to stabilise the dynamic handling response of the vehicle by counteracting any tendency towards oversteer or understeer. The ESP constantly compares the actual movement of the vehicle with predetermined values and, according to the situation, ESP reacts by braking the outer front or inner rear wheel (according to direction of slip) and automatically adjusting the engine's output.

RDS (Radio Data System)

The radio receiver uses additional data sent by the station to display the name of the station you are listening to and, given poor reception, it will retune the selected station to an alternative frequency if available. The system can also provide local traffic reports, interrupting the current station, CD or cassette if required.

Volkswagen service

for your *peace* of mind.

The Volkswagen Warranty.

3-year Warranty.

All Volkswagen Beetles now come with a 3-year/60,000 miles warranty, which protects your car against the failure of most mechanical and electrical components due to manufacturing defects. This comprises a 2-year manufacturer's warranty with unlimited mileage plus a further 1-year/60,000 miles (whichever is soonest) Retailer Warranty. Should the mileage exceed 60,000 miles within the first two years, the manufacturer's 2-year warranty will still be valid. If an additional warranty for subsequent years or higher mileage is desired, it may be purchased from any authorised Volkswagen retailer; however, this additional warranty must be purchased before the mileage reaches 59,999. Cover is subject to the car being serviced and maintained at an authorised Volkswagen retailer according to the manufacturer's recommendations. Full details of the 3-year warranty are available from your Volkswagen retailer. This 3-year warranty is only available on vehicles purchased in the UK through an authorised Volkswagen retailer.

3-year Paint Warranty.

The paintwork of the Beetle is covered against manufacturing defects for a period of 3 years. Naturally, the Beetle must be cared for in compliance with the operating instructions which will be found in your vehicle handbook. Please consult your Volkswagen retailer for full warranty details.

12-year Body Protection Warranty.

The internal body sections and panels of the Beetles are covered against rusting through from the inside for a period of 12 years. Naturally, the Beetle must be cared for in compliance with the operating instructions. Please consult your Volkswagen retailer for full warranty details.

Service Intervals for Petrol and Diesel Engines.

Volkswagen has always been dedicated to protecting the environment. That's why many Volkswagen Beetles now come with a choice of service schedules – Extended and Variable Service regimes.

Your vehicle will be set to operate on Extended Service, which means an oil service is required at 10,000 miles or 12 months (whichever is sooner) with a main service required at 20,000 miles or 24 months (whichever is sooner).

Some engines can also be set to run on the Variable Service regime. Please contact your Volkswagen retailer for further information.

Approved Accessories.

A comprehensive range of accessories from alloy wheels to carpet mats is available to complement the factory-fitted option list. Volkswagen Approved accessories purchased from and fitted by your Volkswagen retailer at the point of vehicle sale will also benefit from the 3-year vehicle warranty.

Volkswagen Insurance.

Competitive insurance premiums are available to Volkswagen owners through Volkswagen Insurance Service (Great Britain) Limited. Volkswagen Insurance guarantee that all repair work is undertaken by an authorised Volkswagen retailer using only genuine parts, thus ensuring that the manufacturer's warranties remain in force. For a quotation, telephone Linkline: 0845 600 8006.

Extended Warranty.

You may purchase additional protection from your retailer or contact 0870 9000 115.

Volkswagen Finance.

Volkswagen Finance offers a dedicated service to meet the needs of both the business user and the private motorist. We can help you choose the right type of finance and will tailor the package to meet your specific requirements. Please consult your Volkswagen retailer for details.

Volkswagen Assistance.

Every new car is registered for Volkswagen Assistance for 1 year. This provides vehicle recovery in the unlikely event of a breakdown (subject to conditions). Volkswagen Assistance can also be purchased for subsequent years. For full details, please contact your Volkswagen retailer.

Tax Free Sales.

For full details, please contact your Volkswagen retailer.

CO₂ Emission.

The weight of a vehicle will influence the level of CO₂ emission it produces; as a result, vehicles with higher levels of specification and factory-fitted options may emit higher levels of CO₂.

The CO₂ figure quoted for each vehicle is the maximum possible. The unladen weight of the vehicle is calculated by range at the time of manufacture and the maximum possible CO₂ emission for that weight range is applied according to the Council Directive 80/1268EEC as amended by Commission Directive 1999/100/EC on the approximation of the laws of the member states relating to the carbon dioxide emissions and the fuel consumption of motor vehicles.

Please Note:

Some illustrations in this brochure do not necessarily reflect UK specifications and may not be available. Consequently, controls and some items of equipment are positioned differently for the UK.

The specifications contained in this brochure are for information purposes only and are subject to change. If you require any specific feature, you must consult your Volkswagen retailer who is regularly updated with any change in specification. Please check model availability and full specification details with your Volkswagen retailer prior to ordering.

All vehicles fitted with accessories in this brochure have been registered.

Note:

We would like to advise you that telephone calls to Volkswagen Customer Care may be monitored and recorded as part of our training and quality assurance processes. All our monitoring and recording processes meet Ofcom regulations.

Experience the

Beetle *phenomenon* -

at your Volkswagen retailer.

