

Volkswagen Information Service. Telephone 0800 333 666

Internet: [www.volkswagen.co.uk](http://www.volkswagen.co.uk)

© Volkswagen Group United Kingdom Limited 2002.

Issue: 1 October 2002. Printed in UK.

PVW130GOLR



The Golf *R32*





## **The R32: sports car passion, with everyday practicality.**

Because driving takes in so many different scenarios, it's not easy to find a car that delivers in every situation. Perhaps you need a car that has the practicality of a hatchback, so that it's ideal for work and leisure. Should you be accommodating friends, you'll need a rear compartment where they can enjoy real space and comfort. But let's not forget the time when you need to be inspired. Really inspired.

'R' symbolises its race inspired heritage through the technology and temperament of motorsport. It equates to a transverse engine that boasts a 3.2 litre capacity in a 'V' formation. On the road it delivers 240 bhp and a top speed of 153 mph, where the law permits. Its stylish bodywork includes a honeycomb front air intake, rear roof spoiler and widened sills.

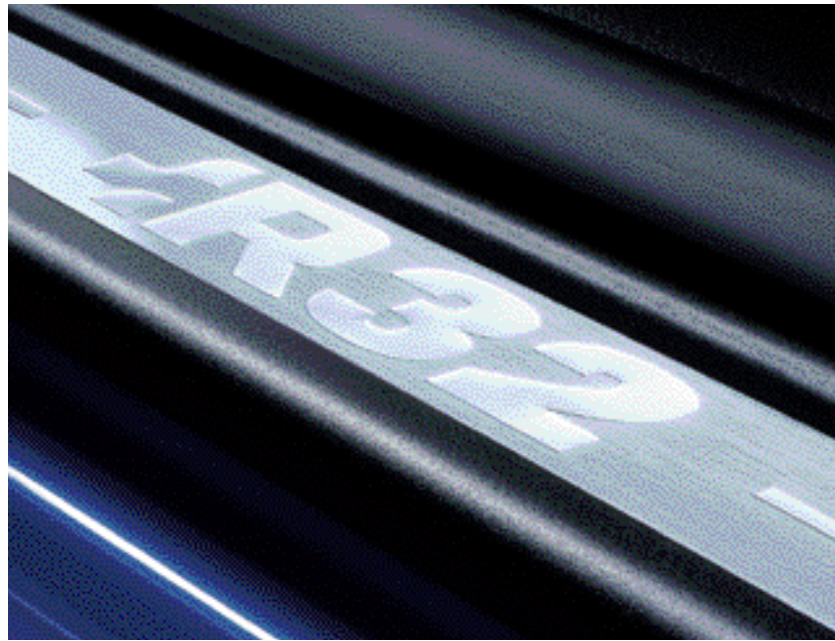
To complement these subtle aerodynamic enhancements, the R32 sits 20 mm lower than the standard Golf thanks to a specially developed sports suspension. In combination, these design features help create the necessary aerodynamics and body rigidity to enjoy the R32's exhilarating performance to the full.

## Performance marks.

At the heart of the R32 beats a powerful V6 engine. Its maximum torque of 320 Nm is available at just 2,800 rpm to ensure swift acceleration throughout the gear ranges. The slick six speed gearbox ensures fast changes as the R32 powers its way from standstill to 62 mph in just 6.6 seconds.

As with all Volkswagen models, safety is a top priority, so such performance is matched by an equally impressive braking system. This is achieved through large dimensioned, internally ventilated discs to the front and rear. The blue brake calipers are clearly visible behind the stylish 18 inch 'Aristo' wheel rims shod with 225/40 ZR18 tyres.

With the R32 it's not just about raw power, it's about blending engineering, high technology and performance data into a genuine driving experience.



The threshold to great performance: the R32 logo is etched on the stylish widened sills.



Behind the radiator grille lies the heart of the R32: the powerful 240 bhp, V6 engine.



The exhaust tailpipes, both left and right, provide more than aesthetic enhancement.





## Visual performance.

From the moment you first climb into the R32 your senses are stimulated. It could be the sight of the ergonomically crafted 'König' sports seats with integrated head restraints designed for maximum support during tight cornering. Or the feel of the leather rimmed three-spoke steering wheel specially moulded for improved grip. Perhaps it's the sound of the 'Gamma' radio through the eight strategically positioned speakers for maximum acoustics. Wherever you look, you'll discover a wealth of high quality features such as tinted side and rear windows, front electric windows, heated seats, Climatronic air conditioning and an alarm with remote central locking. Great attention to detail is clearly visible, highlighted through several areas of brushed aluminium trim. This extends to the aluminium foot pedals, including the accelerator – the key to unleashing the unique sound out of the two chrome tailpipes.



Interior shown is R32 with optional black leather upholstery and navigation/radio system with colour screen.





## Performance with safety.

With the performance of the R32 comes a responsibility to safety. In this respect, the R32 holds no compromises. There are driver's and front passenger's airbags, front seat side impact airbags plus curtain airbags. There are several brake and engine management systems that electronically monitor driving situations and intervene to defuse critical situations. These highly intelligent systems include Anti-lock Braking System (ABS), Electronic Brake-pressure Distribution (EBD), Electronic Stabilisation Programme (ESP) which includes Anti-slip Regulation (ASR) and Electronic Differential Lock (EDL). However, these safety features are no excuse to drive recklessly despite their proven quality.



Perfectly positioned for ease of use: the 'Gamma' RDS radio, six CD autochanger and Climatronic air conditioning.



The three-spoke leather rimmed steering wheel is ergonomically moulded for added grip. Cruise control and navigation/radio system with colour screen are optional at extra cost.



Even the foot pedals are designed with performance in mind.



Interior shown is R32 with optional black leather upholstery.

## Controlled power.

When a car possesses the performance potential of the R32, only the most capable chassis and drive system will suffice. So faced with 320 Nm of torque at 2,800 rpm, we decided to employ the ultimate all wheel drive programme – 4MOTION.

This four wheel drive system constantly regulates distribution of the drive between the front and rear axles and, because the system is electronically controlled, it gives the optimum traction for most driving situations.

With all four wheels working in harmony, the R32 can unleash its power in a safe and controlled manner.

The R32: sports car performance, without sports car compromises.





## Technical Specification.

<b>Technical Data</b>
Battery, A (Ah): 340 (70)
Acceleration, secs 0 - 62 mph: 6.6
Bore/stroke, mm: 84.0/95.9
Alternator, amps: 70
Gearbox: Six speed manual, four wheel drive – 4MOTION
Unladen weight, lbs/kgs <sup>†</sup> : 3334/1512
Gross vehicle weight, lbs/kgs: 4410/2000
Payload, lbs/kgs <sup>†</sup> : 1076/488
Axle load limit, lbs/kgs: Front: 2315/1050
Rear: 2183/990
Maximum roof load, lbs/kgs: 165/75
Top speed, mph (km/h) (where law permits): 153 (247)
Cubic capacity, ltrs/cc: 3.2/3189
Maximum torque, lbs.ft/Nm: 236/320
at rpm: 2800
Maximum output, bhp/kw: 240/177
at rpm: 6250
Engine type: Six cylinder Otto engine
Compression ratio: 11.3 <span> </span> : 1
Fuel grade: Super plus or super lead-free petrol,
Minimum 05. RON

<b>3 door</b>
Official fuel consumption according to EU Directive 99/94, mpg/ltr per 100 km
Urban: 17.2/16.4
Extra-urban: 32.8/8.6
Combined: 24.6/11.5
Official CO <sub>2</sub> emission, g/km*: 276
Noise, dB: 75
Maximum VED band: E

<b>5 door</b>
Official fuel consumption according to EU Directive 99/94, mpg/ltr per 100 km
Urban: TBA/TBA
Extra-urban: TBA/TBA
Combined: TBA/TBA
Official CO <sub>2</sub> emission, g/km*: TBA
Noise, dB: 75
Maximum VED band: E

<b>3 door</b>
Basic recommended price: £18,459.57
VAT: £3,230.43
Total retail recommended price: £21,690.00
‘On the road’ retail recommended price: £22,340.00

<b>5 door</b>
Basic recommended price: £18,987.24
VAT: £3,322.76
Total retail recommended price: £22,310.00
‘On the road’ retail recommended price: £22,960.00

<b>3 door</b>
Basic recommended price: £18,459.57
VAT: £3,230.43
Total retail recommended price: £21,690.00
‘On the road’ retail recommended price: £22,340.00

<sup>†</sup> Figures are calculated in accordance with manufacturer’s criteria.

<b>* CO<sub>2</sub> Information.</b>
The weight of a vehicle will influence the level of CO <sub>2</sub> emission it produces; as a result, vehicles with higher levels of specification and factory-fitted options may emit higher levels of CO <sub>2</sub> . The CO <sub>2</sub> figure quoted for each vehicle is the maximum possible. The unladen weight of the vehicle is calculated by range at the time of manufacture and the maximum possible CO <sub>2</sub> emission for that weight range is applied according to the Council Directive 80/1268EEC as amended by Commission Directive 1999/100/EC on the approximation of the laws of the member states relating to the carbon dioxide emissions and the fuel consumption of motor vehicles.

Specifications subject to change without notice. Information correct as at 1 October 2002. Please note: all data subject to manufacturer’s tolerances.

<b>Environmental Information</b>
3 door
Official fuel consumption according to EU Directive 99/94, mpg/ltr per 100 km
Urban: 17.2/16.4
Extra-urban: 32.8/8.6
Combined: 24.6/11.5
Official CO <sub>2</sub> emission, g/km*: 276
Noise, dB: 75
Maximum VED band: E

<b>5 door</b>
Official fuel consumption according to EU Directive 99/94, mpg/ltr per 100 km
Urban: TBA/TBA
Extra-urban: TBA/TBA
Combined: TBA/TBA
Official CO <sub>2</sub> emission, g/km*: TBA
Noise, dB: 75
Maximum VED band: E

<b>3 door</b>
Official fuel consumption according to EU Directive 99/94, mpg/ltr per 100 km
Urban: 17.2/16.4
Extra-urban: 32.8/8.6
Combined: 24.6/11.5
Official CO <sub>2</sub> emission, g/km*: 276
Noise, dB: 75
Maximum VED band: E

<b>5 door</b>
Official fuel consumption according to EU Directive 99/94, mpg/ltr per 100 km
Urban: TBA/TBA
Extra-urban: TBA/TBA
Combined: TBA/TBA
Official CO <sub>2</sub> emission, g/km*: TBA
Noise, dB: 75
Maximum VED band: E

<b>VED Band ‘E’ – Petrol</b>
The ‘On the road’ retail recommended prices for petrol engines with a CO <sub>2</sub> emission figure above 185 g/km include the following:-
Delivery to retailer: £380.00
Number plates: £20.00
VAT: £70.00
Vehicle excise duty: £155.00
Vehicle first registration fee: £25.00
<b>Total:</b> £650.00

## Standard Equipment.

3-year/60,000 miles warranty (whichever is soonest)
3-year paintwork warranty
12-year body protection warranty
Volkswagen Assistance**

ABS (Anti-lock Braking System) with EBD (Electronic Brake-pressure Distribution)
Air conditioning, electronic climate control
Alloy wheels, four 7½ x 18 ‘Aristo’ with 225/40 ZR18 tyres and anti-theft wheel bolts
Aluminium pedals with R32 logo – clutch, brake and accelerator
Body-coloured bumpers, side bump strips, door mirrors and door handles
Boot load lashing points
Brake pad wear indicator
Breakdown kit
Brushed aluminium trims on centre console, ashtray lid and interior door handles
CD autochanger, 6 disc, dash-mounted‡
Chrome exhaust tailpipes x 2, right and left
Chrome pack
Cup holders, front and rear
Darkened rear lenses
Decorative aluminium inserts
Driver’s and front passenger’s front, side and curtain airbags
Dust and pollen filter
Easy entry front seats
Electrically heated and adjustable door mirrors
Electric windows, front (with one-touch operation)
Electronic engine immobiliser
ESP (Electronic Stabilisation Programme) – includes EDL (Electronic Differential Lock) and ASR (Traction Control)
Four wheel drive
Front seat belt tensioners

## Factory-Fitted Options.

Cruise control
Basic: £153.19 VAT: £26.81 Total: £180.00
‘Delta’ combined radio and single CD player including DSP‡
Basic: £191.49 VAT: £33.51 Total: £225.00
Leather/Alcantara upholstery – Grey
Basic: £1,021.28 VAT: £178.72 Total: £1,200.00

<b>** Volkswagen Warranties.</b>
Every new car is registered for Volkswagen Assistance for 1 year. This provides vehicle recovery in the unlikely event of a breakdown (subject to conditions). Volkswagen Assistance can also be purchased for subsequent years. For full details, please contact your Volkswagen retailer. For full details of all Volkswagen Warranties, please contact your Volkswagen retailer.

‡ ‘Delta’ radio, navigation system and dash-mounted 6 CD autochanger cannot be specified in conjunction with each other. For full details of the factory-fitted options available, please consult your Volkswagen retailer. Factory-fitted options are subject to availability and extended delivery.

Fully galvanised body
Gas discharge (Xenon) dipped beam with headlight washers and automatic height adjustment
Height and reach adjustable steering column
Honeycomb front air intake
Illuminated sun visor mirrors
Isofix child seat preparation
‘König’ height-adjustable front sports seats, heated with integrated head restraints
Leather gear lever gaiter
Leather rimmed steering wheel with R32 logo
Leatherette handbrake grip
Lowered suspension
Low washer fluid warning light
Metallic or Pearl Effect paint
Multifunction computer
Power-assisted steering
‘R32’ logo on radiator grille and at rear (instead of Golf logo)
Radio/cassette ‘Gamma’ with RDS, 8 speakers and roof aerial
Rain sensor and automatic dimming interior rear-view mirror
Rear head restraints, 2 outer
Remote central locking and alarm with interior protection
Roof spoiler, rear
Rotating lock barrels
Sills, widened with R32 logo
Split folding rear seats
Textile floor mats, front and rear with R32 logo
Tinted glass
Two tone horn
Upholstery – ‘Monte Carlo’ cloth
Ventilated disc brakes front and rear with blue calipers
Windscreen with tinted sunband
4MOTION gear knob
6 speed manual gearbox

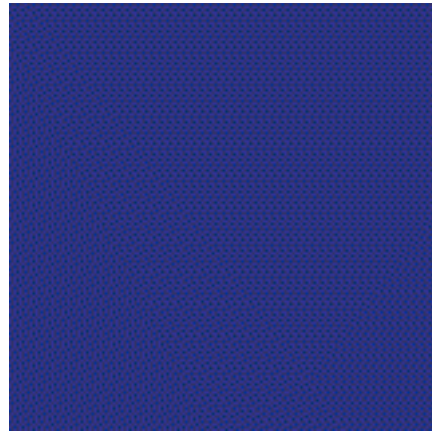
## Exterior Paintwork.



Reflex Silver Metallic (8E)



Diamond Black Pearl Effect (Z4)

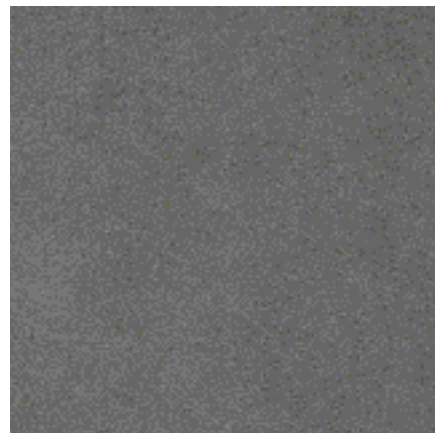


Deep Blue Pearl Effect (6X)<sup>1)</sup>

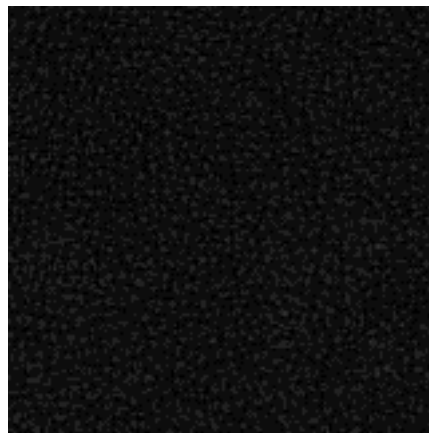
## Upholstery.



'Monte Carlo' Anthracite (GL)  
Carpets: Black  
Dashboard: Black/Black



Flannel Grey Alcantara/Leather (JZ)<sup>2)</sup>  
Carpets: Black  
Dashboard: Black/Black



Black Leather (YZ)<sup>2)</sup>  
Carpets: Black  
Dashboard: Black/Black

### Paintwork and Upholstery Footnotes

<sup>1)</sup> Please contact your Volkswagen retailer for availability.

<sup>2)</sup> Optional at extra cost.

Please note: the print process does not allow for exact reproduction of the paint and upholstery colours, for further details please contact your Volkswagen retailer.



Some illustrations in this brochure do not necessarily reflect UK specifications and may not be available. Consequently, controls and some items of equipment are positioned differently for the UK.

The specifications contained in this brochure are for information purposes only and are subject to change.

If you require any specific feature, you must consult your Volkswagen retailer who is regularly updated with any change in specification. Please check model availability and full specification details with your Volkswagen retailer prior to ordering.

TDI<sup>®</sup> is a registered trademark of VOLKSWAGEN AG.