

Volkswagen Information Service. Telephone 0800 333 666

Internet: [www.volkswagen.co.uk](http://www.volkswagen.co.uk)

© Volkswagen Group United Kingdom Limited 2002.

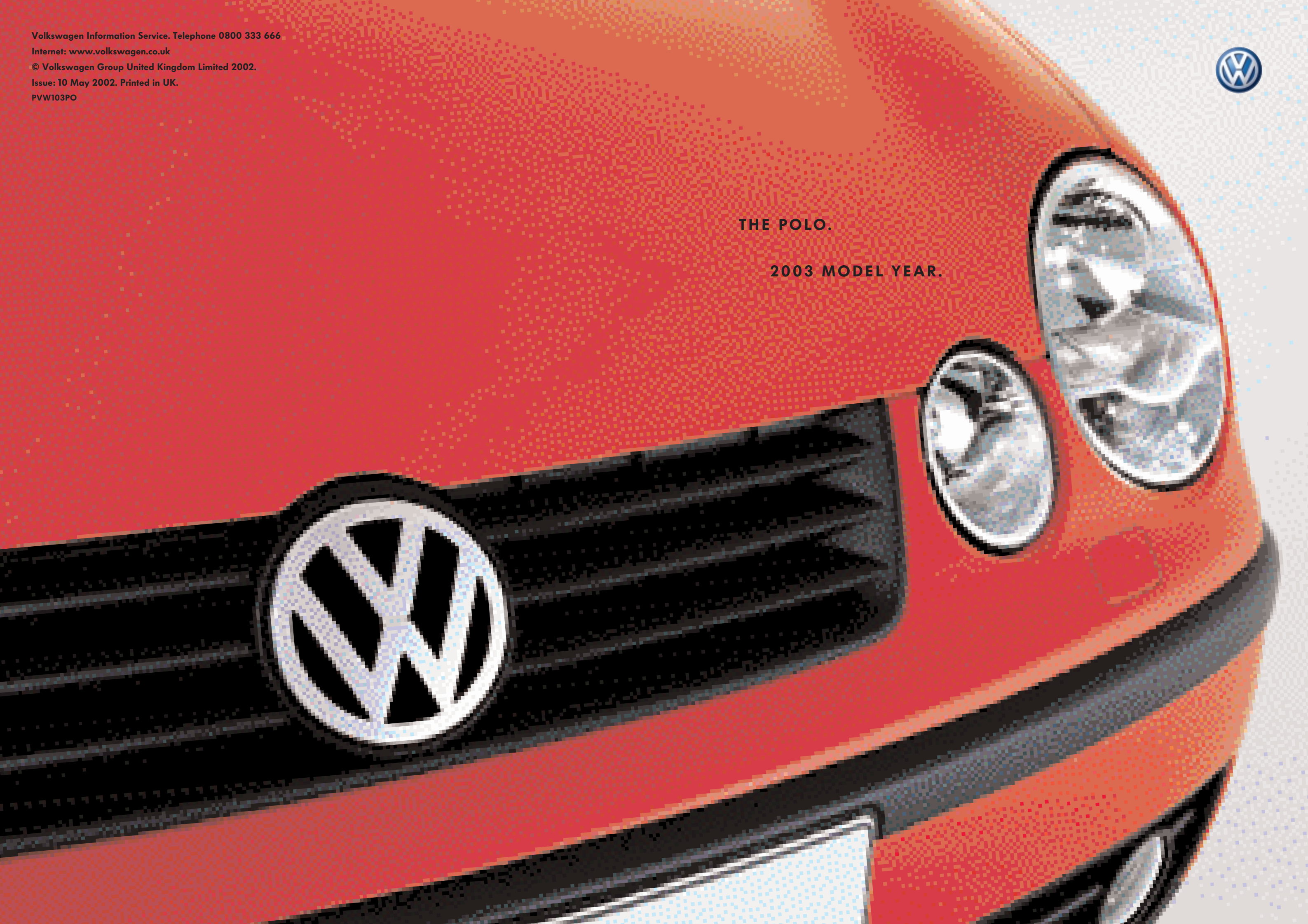
Issue: 10 May 2002. Printed in UK.

PVW103PO

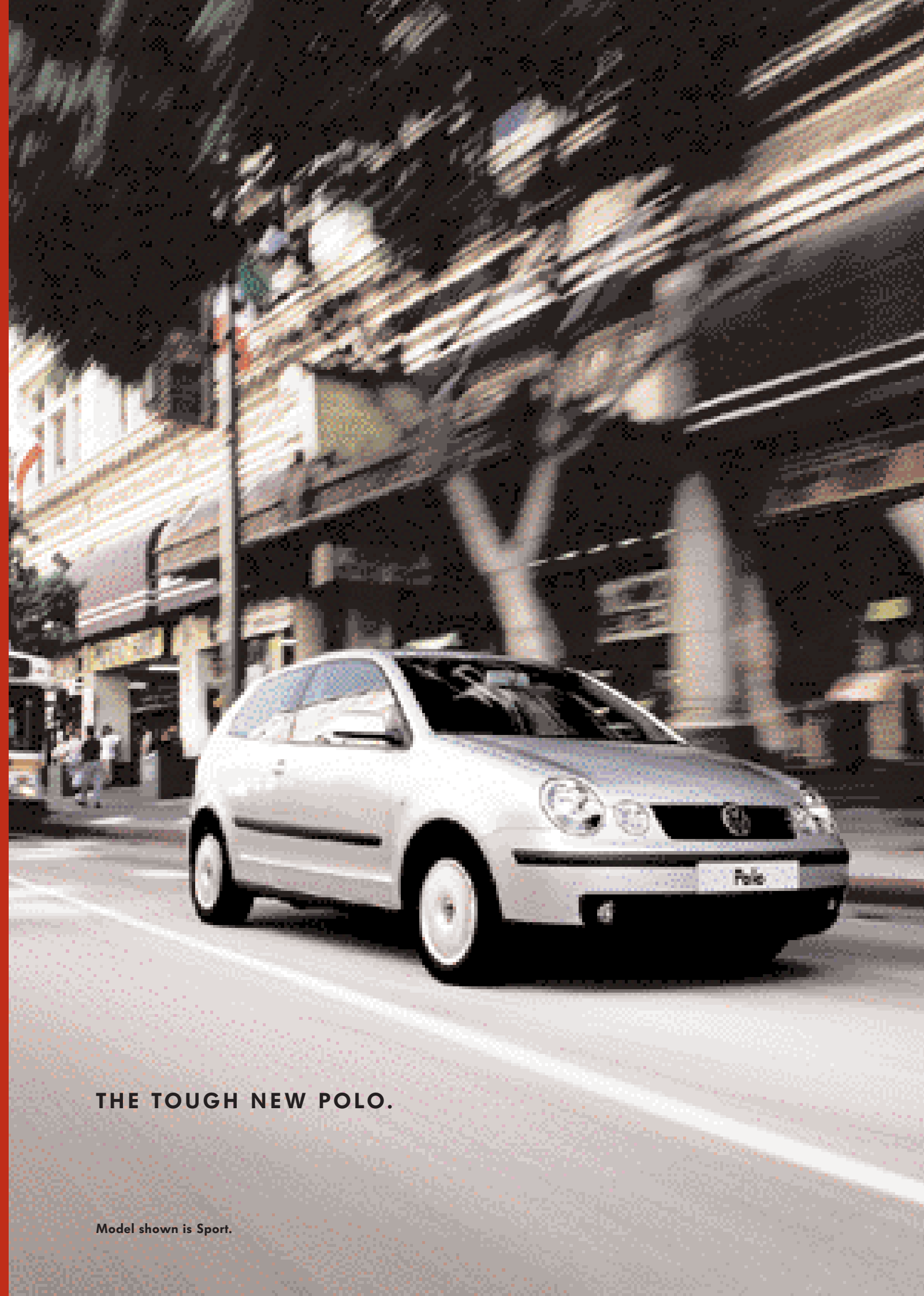


THE POLO.

2003 MODEL YEAR.



- 4 Philosophy
- 6 Design
- 12 Safety
- 16 Engines
- 20 Quality
- 24 The new Polo Model Range
- 34 Optional Equipment
- 42 Accessories
- 50 Colours and Upholstery
- 58 Technical Specification
- 64 Standard Equipment
- 66 Dimensions and Glossary
- 68 Volkswagen Service



**THE TOUGH NEW POLO.**

Model shown is Sport.



04  
05

**THE POLO.  
THE BENCHMARK FOR SMALL CAR DESIGN.**

**Model shown is SE fitted with optional front fog lights.**

Owning and driving a small car used to have its advantages and disadvantages. With the arrival of the Polo, we've eradicated the disadvantages. From now on there's no need to accept lesser comfort, quality, technology and equipment than those driving larger cars. In fact, you don't need to make any compromises at all – just revel in the small car manoeuvrability, practicality and economy that complement the Polo's big car comforts.

**GOOD DESIGN DOESN'T NEED  
TO CHANGE EVERYTHING.**

Model shown is SE fitted with optional 16" 'Barcelona' alloy wheels.



A photograph of a car's interior from the driver's perspective. The dashboard is dark with a central display screen. The steering wheel is black with a silver logo in the center. The center console has a gear shifter and handbrake. The seats are upholstered in a light-colored material. The text "EXCEPT FOR THE BETTER." is printed in the upper right area of the image.

EXCEPT FOR THE BETTER.

08  
09

Interior shown is SE with optional electric rear windows and rain sensor with automatic dimming interior rear-view mirror. Please note that S models and above feature a standard leather rimmed steering wheel, gear knob and gaiter.





Whatever your size, the height and reach adjustable steering wheel helps you find the ideal driving position. Interior shown has optional electronic climate control.



With easy access and safe storage, the drawer underneath the front seats is a welcome and ingenious addition. Standard on all models except E.

## THE INTERIOR DESIGN.

From the moment you step inside the Polo, you'll notice how roomy it is for a small car. The reason is ergonomic design – the study of how efficient we are within an environment, in this case the driving environment. So as you notice the support of the firm, contoured driver's seat, you'll also discover how easy it is to read the dials. Likewise, all the switches and controls are positioned within easy reach. The benefit of this well thought out interior is not just the added comfort, but the ability to concentrate on the most important thing; the road ahead.

Quality is also clearly evident when appreciating the interior of the Polo. From the choice of quality fabrics to the solid feel of fitted components. A particular highlight of such quality is the stylish dashboard with its red needles and blue illumination at night-time.

Interiors shown are SE with sumptuous leather upholstery. Please note that S models and above feature a standard leather rimmed steering wheel, gear knob and gaiter.





AS YOU NEVER KNOW WHAT LIES AHEAD,  
SAFETY IS OF PRIME IMPORTANCE.

Model shown is SE.



**Model shown is SE with optional rain sensor and automatic dimming interior rear-view mirror.**

## **ABS: AN ELECTRONIC GUARDIAN ANGEL.**

One of the basic needs of every human being is to feel protected. For this reason, not only is the Polo the largest ever produced, it's also the safest, with many unique features in its class. To begin with, its structure is designed to absorb energy during an accident and limit damage to its inner safety cell. Similarly, at the time of impact, the engine and gears are decoupled from the bodywork to avoid major penetration to the interior. To protect the driver's feet and legs, the pedals are designed to pull away in the event of frontal impact.

Every Polo is fitted with four airbags – two front airbags and two within the side of the front seats. When combined with three-point seat belts equipped with force limiters and pre-tensioners, these safety features provide exceptional protection for the driver and front seat passenger. Building on the strength of the previous Polo, crash testing has proven that, during side impact, the Polo is better than ever.

We've also paid special attention to the needs of the younger passengers, as they are often at greater risk during an accident. For example, Volkswagen's own Isofix system is pre-installed with fixing points on the chassis itself. So when you add an Isofix seat, it clicks into place in seconds without the need to thread any seat belts – it's also far more sturdy than a traditional system. There are two optional extras for those with a young family – an integrated child seat in the rear bench and the ability to deactivate the front passenger airbag so as to fit a rear facing child seat.

Across the range, ABS is fitted as standard. The ABS is activated under extreme braking, particularly on slippery road surfaces. This electronically controlled system helps to prevent the wheels from 'locking', thereby enabling the car to remain steerable in hazardous conditions. On 75 bhp models and above, the ABS is further enhanced with disc brakes all round.

As an optional extra, Electronic Stabilisation Programme (ESP) with hydraulic brake assistance ('brake assist') provides additional safety. Brake assist recognises an emergency braking situation and applies maximum braking controlled by the ABS system, to ensure that the best possible braking is achieved.





**SIZE, POWER AND PERFORMANCE  
IN PERFECT HARMONY.**

Model shown is Sport.



## LEADING EDGE TECHNOLOGY.

Through a wide choice of petrol and diesel engines, it's easy to find a Polo that feels just right for you and your budget. Whichever one you choose, you'll enjoy exceptional fuel economy and, increasingly important, you'll help reduce pollution. Our high-tech engines are epitomised by the new 1.4 litre FSI, which stands for Fuel Stratified Injection.\* This ingenious engine applies lean-burn technology and direct petrol injection through a precisely controlled spray action. The result is an 86 bhp engine that combines miserly fuel consumption with lower CO<sub>2</sub> emissions.†

The enviable choice of petrol engines continues with two 3 cylinder and two 4 cylinder units. Choose one of the 3 cylinder engines and you'll benefit from a lightweight aluminium construction that helps reduce fuel consumption. Such weight savings also help deliver agile and responsive performance throughout its ample torque curve. The addition of a balancing shaft also ensures the engines run smoothly and quietly. The fuel consumption figures speak for themselves – on the Urban cycle† the 1.2 litre 55 bhp engine returns 35.8 mpg and the more powerful 1.2 litre 65 bhp engine returns 36.7 mpg.



The new 3 cylinder petrol engines:  
Low weight means greater fuel economy.



With a TDI 'Pumpe Düse' engine,  
performance and economy go hand in hand.

Opt for one of the 4 cylinder engines – either 75 bhp or 100 bhp – and more sporty performance will be at your disposal. Whichever petrol engine you decide upon, you'll find a responsive transfer of power through a 5 speed gearbox. For greater convenience in city driving, the 1.4 litre 75 bhp petrol engine can be fitted with an optional 4 speed automatic transmission.

If it's a diesel you desire, the range starts with a 64 bhp, 1.9 litre SDI that returns 57.6 mpg on the Combined cycle.† If you're seeking added performance, yet require the exceptional economy of a diesel, then you'll be amazed by the 3 cylinder 75 bhp and 4 cylinder 100 bhp TDI engines. Both benefit from turbocharging and 'Pumpe Düse' (PD) direct fuel injection, one of Volkswagen's latest technological breakthroughs. PD's high pressure design allows fuel to be directed into the cylinder in ultra fast time and is the key to its superb efficiency and impressive performance.

\* Please see Glossary on page 67.

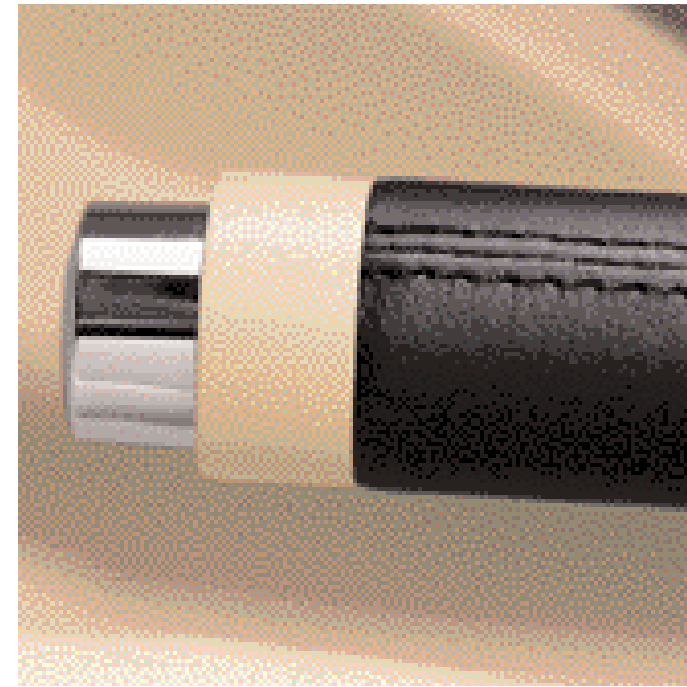
† According to EU Directive 99/94. Please see pages 58, 59 and 62 for fuel consumption and CO<sub>2</sub> emission figures.





TRENDS MAY COME AND GO,  
BUT QUALITY REMAINS.

Model shown is Sport fitted with optional 16" 'San Marino' alloy wheels.



Quality materials and a perfect finish,  
right down to the finest detail.



Clear headlights reveal  
the latest technology.

## QUALITY STANDS THE TEST OF TIME.

The redesign of the Polo has left no stone unturned. We started with the positive aspects of the previous Polo, totally revamped them, then added a whole lot more. The build quality for a small car is second to none and the result of precise laser welding techniques. If you look at the fit of the panels, you'll see how narrow and uniform they are throughout the bodywork. Such consistency not only adds to the aesthetics of the Polo's design, it improves aerodynamics for quieter and more efficient performance. To ensure longevity, the whole of the bodywork is fully galvanised and, for total peace of mind, is covered by a 12-year guarantee against rusting through from the inside.





**MODERN AND TECHNOLOGICALLY  
ADVANCED WITH VISUAL PRESENCE.**

Model shown is Sport fitted with optional 16" 'San Marino' alloy wheels.



Front seat-mounted side airbags are standard on all models.



A 'Beta' radio/cassette with 4 speakers is standard on E and S models.



To conserve energy, the heated rear window automatically switches off after 15 minutes.

## THE POLO E: SMALL CAR BENEFITS, BIG CAR COMFORT.

The Polo E impresses in many ways, but most importantly, it's the way it feels. It possesses such quality and charisma, you'd be forgiven for thinking you were in a much larger class of car. By increasing the wheelbase by 5.3 centimetres, not only has the headroom for rear passengers been increased, the whole interior has been redesigned with a more spacious layout. There's plenty of large car features like ABS, two rear head restraints, tinted glass, carpet in the luggage compartment, electrically-adjustable door mirrors, central locking and a 'Beta' radio/cassette with RDS, 4 speakers and a roof aerial.

The larger wheelbase also enhances the weight distribution, thereby helping to improve roadholding. Another factor that makes the Polo equally comfortable in town or on the open road is its speed sensitive power-assisted steering. Weave through twisty lanes and the steering resistance will be greater to facilitate more precise steering manoeuvres. Back in the city, where the Polo excels, at lower speeds the steering will become lighter to make parking child's play.





Please note that S models and above feature a standard leather rimmed steering wheel, gear knob and gaiter.



All models feature electrically-adjustable door mirrors and central locking (with anti-hijack on S models and above).



The luxury of semi-automatic 'Climatic' air conditioning is standard on S models and above.



Front electric windows are standard on S models and above.

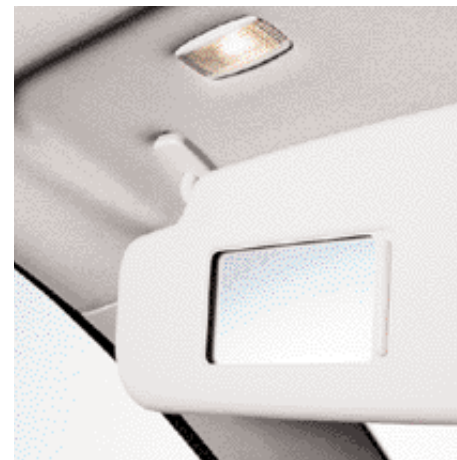
## THE POLO S: LUXURIOUSLY EQUIPPED.

The Polo S offers more by way of luxurious equipment. You'll find electric front windows, leather rimmed steering wheel, gear knob and gaiter, split folding rear seats, 'easy entry' sliding seats (3 door models only) plus driver's and front passenger's seat height adjustment with under seat drawer storage. There's even an anti-hijack central locking button and front cup holder. The Polo S is also fitted with air conditioning as standard. This semi-automatic 'Climatic' control system not only delivers cool comfort in the hot summer months, it also helps rapidly demist the windscreen in the winter.

This attractive specification also offers the widest choice of engines in the Polo range – three petrol and two diesel. The petrol engines include a 1.2 litre 55 bhp, a 1.2 litre 65 bhp or a 1.4 litre 75 bhp (available with automatic gearbox). If you prefer the economy and low running costs of a diesel, but don't wish to compromise on performance, why not consider one of Volkswagen's latest diesels? You can choose either a 1.9 litre SDI developing 64 bhp or a 1.4 litre TDI 75 bhp that benefits from 'Pumpe Düse' technology.



Please note that S models and above feature a standard leather rimmed steering wheel, gear knob and gaiter.



On SE and Sport models, the front vanity mirrors are illuminated when opened.



The deep rear seat centre armrest, standard on the SE, provides additional storage.



The 'Sao Paulo' is standard on the SE. This seven-spoke 14" alloy wheel is optional on E and S models.

## THE POLO SE: THE SMALL CAR THAT LOVES TO IMPRESS.

The large car feel enjoyed by the Polo is taken to the extreme with the Polo SE. It boasts many luxury features that normally adorn the cars of the executive car park. Like semi-automatic 'Climatic' air conditioning, 14 inch 'Sao Paulo' alloy wheels, remote control central locking and alarm with interior protection, body-coloured door mirrors and door handles, split folding rear seats with a centre armrest, a 'Gamma' RDS radio/cassette with 8 speakers, and luxurious 'Maxima' cloth upholstery.

When it comes to selecting an engine, there's an inspiring choice – three petrol and one diesel. The petrol engines are a 1.2 litre 65 bhp, 1.4 litre 75 bhp or a more powerful 1.4 litre 86 bhp FSI. When you consider that the 1.4 litre 75 bhp can reach 107 mph, where the law permits, yet return 43.5 mpg on the Combined cycle\*, it really does offer all-round performance. The diesel option is the 1.4 litre TDI PD that develops 75 bhp. In addition to fuel economy and good performance, its CO<sub>2</sub> emission is the lowest in the Polo range, just 124 g/km.\*

\* According to EU Directive 99/94. Please see pages 58, 59 and 62 for fuel consumption and CO<sub>2</sub> emission figures.





Please note that S models and above feature a standard leather rimmed steering wheel, gear knob and gaiter.



A multifunction computer provides information about distance travelled, driving time, range, average speed, average fuel consumption, time and outside temperature. It is standard on the Sport.



The 'Melbourne' is standard on the Sport. This five-spoke 15" alloy wheel is optional on S and SE models.



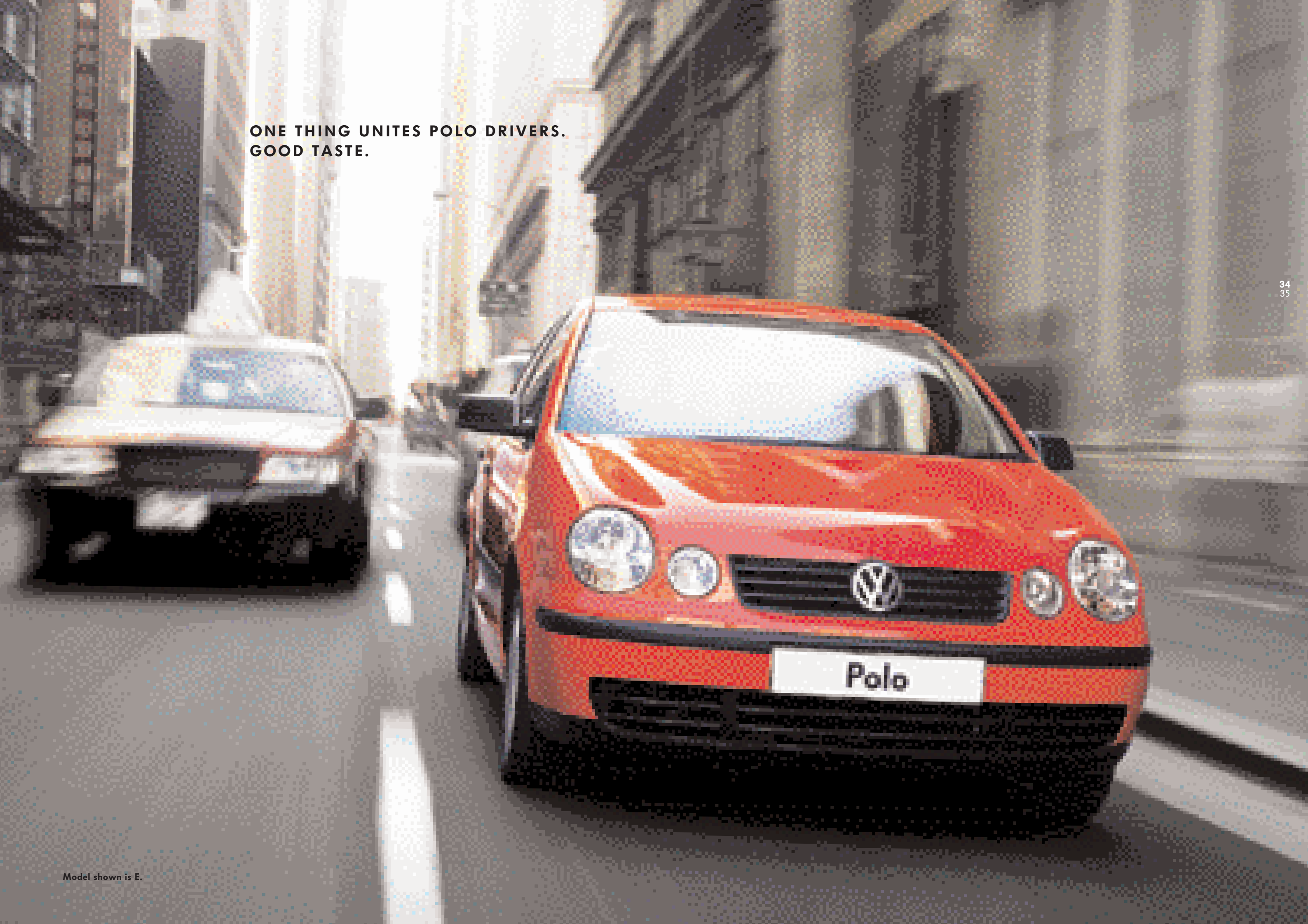
A front cup holder is standard on S models and above.

## THE POLO SPORT: PERFORMANCE ENGINEERED.

From the moment you set eyes on the Polo Sport, its intentions are clear – 15 inch 'Melbourne' alloy wheels with 195 tyres, front fog lights with heated windscreen washer jets and uprated suspension give a feel for what's to come. Gaze inside and you'll find front sports seats, a dash-mounted 6 CD autochanger, multifunction computer and lively 'Scala' cloth upholstery.

But it's on the road where the Polo Sport will really impress thanks to the fine choice of engines combined with sports suspension. Choose one of the two diesel options and you'll soon become an admirer of the turbocharging and PD technology that delivers the perfect blend of performance with diesel economy. The 1.9 litre 100 bhp TDI PD engine will take you to 62 mph from standstill in just 10.7 seconds on your way to a top speed of 117 mph, where the law permits. Alternatively there will be two petrol engines, the 1.4 litre 16V 100 bhp and the revolutionary new 1.4 litre 86 bhp FSI.

**ONE THING UNITES POLO DRIVERS.  
GOOD TASTE.**







The top-of-the-range 'Gamma' radio/cassette features digital sound control.



Standard on Sport models, a dash-mounted CD autochanger holds 6 discs.



With a state-of-the-art satellite navigation system, you can throw away your map books.

## IN-CAR ENTERTAINMENT.

Every model in the Polo range includes a quality radio/cassette player. On the E and S it's the 'Beta' with RDS, 4 front speakers and a roof aerial. With RDS, not only does the radio retune to the best available signal, it also keeps you informed of any traffic information announcements. Other features include auto reverse on the cassette player and automatic volume control that adjusts depending upon the speed of the car.

The 'Gamma' radio/cassette is standard equipment on the SE and Sport, and optional on E and S models. This model outputs exceptional sound quality through 8 speakers and also features RDS. An ingenious feature of the RDS is TIM (Traffic Information Memory) which stores traffic announcements which you can play back when you return to your car.

Both units can be linked to the optional dash-mounted CD autochanger that holds 6 discs for hours of uninterrupted music and is available for E, S and SE models.

## SATELLITE NAVIGATION.

The radio navigation system is the very latest technology and is set to make the traditional road map a thing of the past. Route guidance is supplied via arrow symbols in both the unit and a display in the centre of the instrument panel, together with audible recommendations. The CD slot can be used for music CDs when the navigation system is not in use. In addition, this system will also operate the Volkswagen boot-mounted 6 CD autochanger. The monochrome navigation system is available as a factory-fitted option at extra cost, on SE and Sport.

Please note the dash-mounted 6 CD autochanger or radio navigation system are not available in conjunction with each other. If both systems are required, the dash-mounted 6 CD autochanger is replaced with a boot-mounted 6 CD autochanger.



If you wish to fit a child seat in the front passenger seat, the passenger airbag must be deactivated. This option allows fast deactivation using the ignition key.



Electronic Stabilisation Programme (ESP) provides an exceptional level of active safety.

## SAFETY EQUIPMENT.

The Electronic Stabilisation Programme (ESP) provides an exceptional level of active safety. It works through a series of electronic sensors that constantly monitor the desired direction of the car and compare it with the actual movement. If a deviation is detected, the system activates in a fraction of a second to try to defuse any potentially dangerous situations. Despite the immense capability of ESP, it's worth remembering that it cannot defy the laws of physics. This option also includes hydraulic brake assistance that detects the amount of pressure on the brake pedal. If it recognises an emergency application, it automatically builds up the braking force to reduce the stopping distance. ESP is available as an option on all models.

At Volkswagen we've always viewed safety as a priority, particularly for the youngest members of a family who are often the most vulnerable. It's the reason why we developed the Isofix system – a method of attaching a seat to fixings on the chassis itself. Alternatively, as an option on all models, you can choose an integrated child seat which provides the neatest, quickest and most flexible way of accommodating children of around 3 to 6 years old. Please note, the integrated child seat is positioned behind the driver's seat.



An integrated child seat is the fast and simple way to accommodate children between 3 to 6 years.





The 'Sao Paulo' is standard on the SE. This seven-spoke 14" alloy wheel with 185 tyres is optional on E and S models.



The 'Melbourne' is standard on the Sport. This five-spoke 15" alloy wheel with 185 tyres is optional on S and SE models.



The 16" 'Barcelona' alloy wheel is available with 205 tyres on S (except 1.2 litre 55 bhp), SE and Sport.



The stylish 'San Marino' design 16" alloy wheel with 205 tyres is available for the Sport.

## LIGHT ALLOY WHEELS.

Glance at any car and its wheels will be one of the first things you notice. They complete a car's personality and are a simple way of expressing your individuality. There are several alloy wheels available for the Polo, ranging from 14 to 16 inches with 185 tyres up to broad 205 tyres. Each design is built to the highest standards using the finest materials, to ensure they retain their looks for many years to come. All alloy wheels include anti-theft locking wheel bolts.



The luxury of semi-automatic 'Climatic' air conditioning is optional on E models.



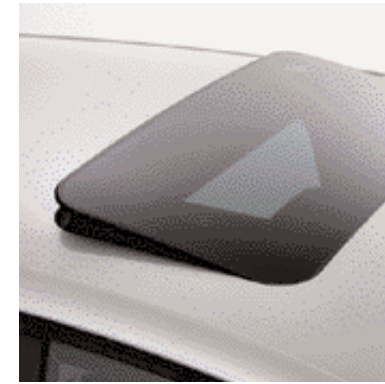
'Climatronic' has the benefit of precise temperature control. Available as an option on all models except E.



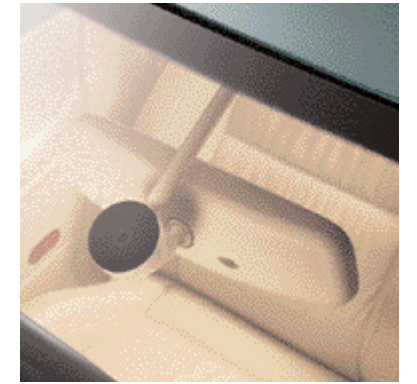
Front heated seats have five separate preset temperature controls. Available as part of the Winter pack on all models.



Manual rear vent windows provide draught-free ventilation (3 door models only).



The glass sunroof is electrically operated for ease of use.



A rain sensor detects moisture and adjusts the speed of the windscreen wipers accordingly.

## AIR CONDITIONING.

It's equipment like air conditioning, standard on all models except the E, that makes the Polo feel more like a larger executive car. Whilst the standard 'Climatic' system is semi-automatic, it is possible to upgrade to a full climate control package. This more advanced system allows precise control of the interior cabin to a preset temperature. You can either cool or warm the air and it also takes out the dampness, which is particularly useful in the winter for demisting the windscreen. As you'd expect from Volkswagen, our commitment to the environment ensures that no CFCs are used, be it during manufacture or when operating the system.

Across the Polo range, a glass sunroof is available as an optional extra. With electric operation, the sunroof is fast and simple to use – just twist the control to your desired setting and the roof will open or close in a matter of seconds. To avoid direct sunlight, the sunroof comes with a retractable blind.

## COMFORT AND CONVENIENCE.

On all Polo models there is the option of a rain sensor. This detects the amount of water on the windscreen and adjusts the speed of the wipers accordingly. During the coldest months the optional Winter pack provides a touch more comfort as well as additional safety. It includes heated front seats with five preset temperature settings, powerful headlight washer jets, heated windscreen washer jets and a warning light to indicate when the screenwash is running low.





**Split folding rear seats provide greater practicality. Optional on E models.**



**The sumptuous feel of leather upholstery is available as an option on SE and Sport.**

## **COMFORT EQUIPMENT.**

With split folding rear seats you have the ability to accommodate both rear passengers and bulky items of luggage. For greater flexibility, the seats are split 1/3 to 2/3. This option includes an additional third head restraint and a full three-point seat belt in the middle position.

For an exclusive feel, you can't beat natural leather. It not only creates a classic and elegant ambience, it's highly practical too. It provides great comfort, is extremely hard-wearing and is easy to clean and maintain. This option also includes heated front seats which have five temperature settings with individual controls and on 5 door models includes electric rear windows.



**Stand out from the crowd with a Polo Colour Concept. Optional on SE and Sport. Please note that S models and above feature a standard leather rimmed steering wheel and gear knob.**

## **COLOUR CONCEPT.**

The Colour Concept option is available in three lively colours – blue, yellow or red. It starts with a gleaming, vibrant paintwork and continues inside with a quality leather interior. The interior seats combine side panels in anthracite with middle panels in your chosen colour. The bright coloured leather extends across the door inserts and gear lever gaiter. This option also includes front height-adjustable heated sports seats with five individual preset temperature controls. This option is not available until mid 2002.

**SMALL CHANGES THAT MAKE  
A BIG DIFFERENCE.**



Model shown is Sport fitted with 15" 'Tangis' alloy wheels.



## ORIGINAL VOLKSWAGEN ACCESSORIES.

Volkswagen accessories are designed specifically with individual models in mind to enhance aesthetics, performance or practicality. For example, you could choose an aerodynamic accessory such as a rear roof spoiler. Alternatively, to complement your lifestyle, you could fit a roof rack system in order to carry skis, bikes or a luggage box. Whichever accessories you choose, they'll be designed to complement the Polo.



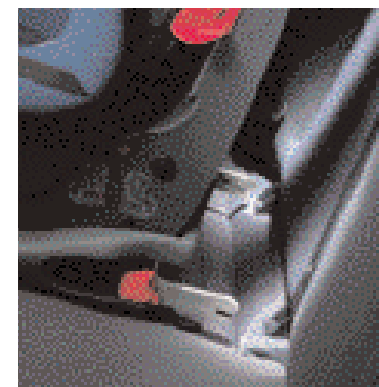
Rear window sunblind.  
Part No. 6Q0 064 360



Bobsy INTEGRAL.  
(Used in conjunction with the  
integrated child seat). Suitable  
for children of approximately  
2 to 4 years or a weight of  
13-18 kg.  
Part No. 000 019 919 B



Luggage restraint/mesh partition.  
Part No. 6Q0 017 221



Bobsy G1 ISOFIX DUO.  
The second generation of  
Isofix systems. The standardised  
fixing facility guarantees simple  
installation and ensures a firm  
connection between child seat  
and vehicle – your child is given  
optimum protection during every  
journey. Naturally the Isofix can  
be fastened with a three-point  
seat belt when changing vehicles.  
Part No. 00V 019 909

## SPORTS ACCESSORIES.

You can choose from a range of distinctive alloy wheels, each one precision engineered to lightweight specifications. Our anti-theft wheel bolts (Part No. ZGB 1J0 071 591) will keep them securely in place.



5 Star Raceline 6J x 15.  
Part No. 1J9 071 496 666



Cosmos 5½J x 14.  
Part No. ZGB 6Q0 071 400



Tangis 6J x 15.  
Part No. 6Q0 071 490 666



Contur 7J x 16.  
Part No. 6Q0 071 491 666



Rave 6½J x 16.  
Part No. 1C0 071 491 666



The dash-mounted 6 CD autochanger will give hours of uninterrupted listening pleasure.  
Part No. 6X0 057 110



Why not personalise your Polo with the addition of an aerodynamically proven rear roof spoiler?  
Part No. 6Q0 071 645 9AX



Wooden gear knob.  
Part No. 6Q0 064 230



Enhance the already impressive in-car entertainment system with a single CD player.  
Part No. 1J0 057 119 C

## PRACTICAL TRAVEL SOLUTIONS.

For day-to-day needs or short-term travel requirements, the extensive range of touring accessories is designed to solve your problems. The roof systems are typical of Volkswagen's attention to detail and have been wind tunnel tested to ensure handling and safety remain unaffected, whilst the quick release catches make fitment and removal a fast and simple process.



Roof bars – 3 door.  
Part No. 6Q0 071 126

Roof bars – 5 door.  
Part No. 6Q5 071 126



The hydraulic bicycle lift allows bikes to be lifted easily to the car roof.  
Part No. 4D0 071 128 D



Ski/Snowboard holder.  
4 pairs skis/2 snowboards max.  
Part No. 3B0 071 129  
6 pairs skis/4 snowboards max.  
Part No. 3B0 071 129 A



The lockable bicycle holder secures your bike out of the way on the roof of the car.  
Part No. 6Q0 071 128



The mudflaps are designed to minimise dirt and make light work of cleaning.  
Front Part No. 6Q0 075 111  
Rear Part No. 6Q0 075 101



Loadliner – flexible.  
Part No. 6Q0 061 160



COLOUR IS AN EXPRESSION OF INDIVIDUALITY.



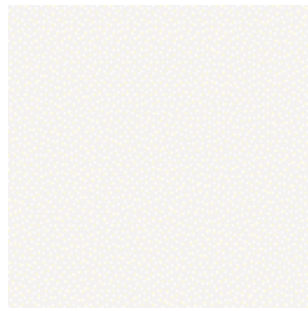
# EXTERIOR PAINTWORK.

## Non-Metallic Paint



**Black\***

A1



**Candy White**

B4



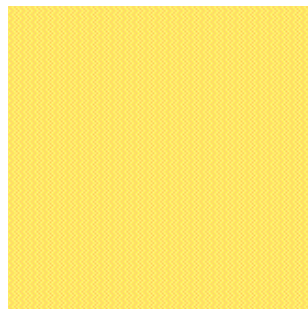
**Flash Red**

D8



**Summer Blue**

E1



**Yellow\***

9108

## Metallic Paint\*



**Science Green**

S4



**Mercato Blue**

6J



**Reflex Silver**

8E

## Pearl Effect Paint\*



**Grey Anthracite**

F8



**Rosewood Red**

R8



**Diamond Black**

Z4



**Jazz Blue**

1D



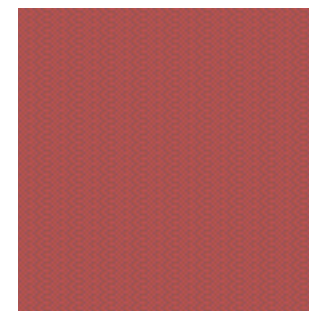
**Indigo Blue**

7D



**Oceanic Green**

8Z



**Berry Red**

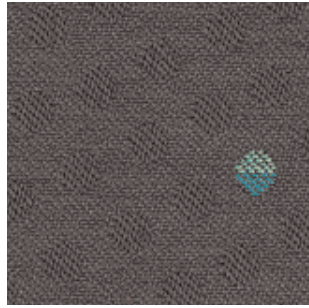
9W

Please note: The print process does not allow for exact reproduction of the paint colours. For further details, please contact your Volkswagen retailer.

\* Black, Yellow, Metallic and Pearl Effect paint are optional at extra cost.

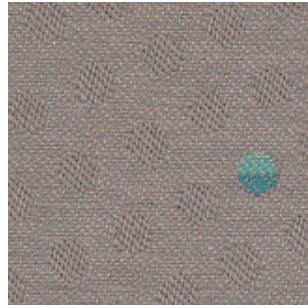
# A CHOICE OF UPHOLSTERY.

E, S  
'Magic' cloth



Anthracite

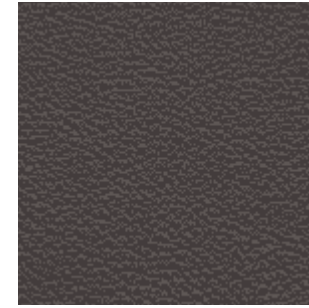
AU



Flannel Grey

AV

SE, Sport  
Leather sports seats\*



Anthracite

VF



Cream

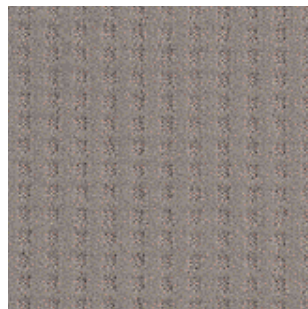
VL

SE  
'Maxima' cloth



Anthracite

DB



Flannel Grey

DC



Cream

DD

Colour Concept  
Leather sports seats†



Anthracite/Blue

ZU



Anthracite/Red

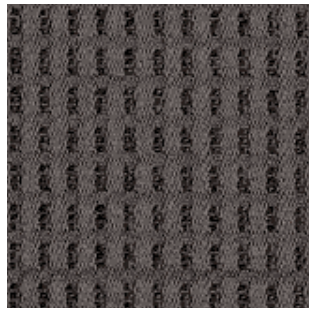
ZV



Anthracite/Yellow

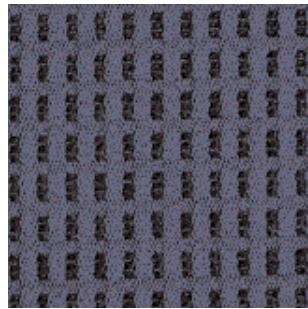
ZW

Sport  
'Scala' sports seats



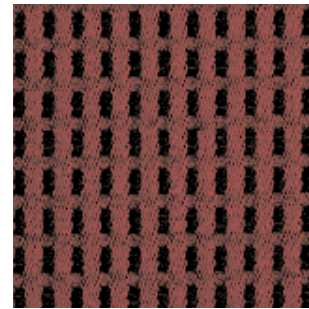
Anthracite

BE



Anthracite/Blue

BF



Anthracite/Red

BG

Please note: The print process does not allow for exact reproduction of the upholstery colours. For further details, please contact your Volkswagen retailer.

\* Optional at extra cost.

† Optional at extra cost as part of Colour Concept pack.  
Colour Concept pack is not available until mid 2002.



# COLOUR COMBINATIONS.

Seat upholstery		Carpets	Dashboard	Black A1*	Candy White B4	Flash Red D8	Summer Blue E1	Yellow 9108*	Science Green Metallic S4*	Mercato Blue Metallic 6J*	Reflex Silver Metallic 8E*	Grey Anthracite Pearl Effect F8*	Rosewood Red Pearl Effect R8*	Diamond Black Pearl Effect Z4*	Jazz Blue Pearl Effect 1D*	Indigo Blue Pearl Effect 7D*	Oceanic Green Pearl Effect 8Z*	Berry Red Pearl Effect 9W*
<b>E, S – ‘Magic’ cloth</b>																		
Anthracite	AU	Black	Anthracite/Anthracite	■	■	■	■	■	■	■	■	■	■	■	■	■	■	■
Flannel Grey	AV	Flannel Grey	Anthracite/Flannel Grey	■	■	■	■	■	■	■	■	■	■	■	■	■	■	■
<b>SE – ‘Maxima’ cloth</b>																		
Anthracite	DB	Flannel Grey	Anthracite/Anthracite	■	■	■	■	■	■	■	■	■	■	■	■	■	■	■
Flannel Grey	DC	Black	Anthracite/Flannel Grey	■	■	■	■	■	■	■	■	■	■	■	■	■	■	■
Cream	DD	Cream	Anthracite/Cream	■	■				■		■	■	■	■	■	■	■	■
<b>Sport – ‘Scala’ sports seats</b>																		
Anthracite	BE	Black	Anthracite/Anthracite	■	■	■	■	■	■	■	■	■	■	■	■	■	■	■
Anthracite/Blue	BF	Black	Anthracite/Anthracite	■	■	■	■	■	■	■	■	■	■	■	■	■	■	■
Anthracite/Red	BG	Black	Anthracite/Anthracite	■	■					■		■	■	■	■	■	■	■
<b>SE, Sport – Leather sports seats</b>																		
Anthracite	VF	Black	Anthracite/Anthracite	□	□	□	□	□	□	□	□	□	□	□	□	□	□	□
Cream	VL	Cream	Anthracite/Cream	□	□				□		□	□	□	□	□	□	□	□
<b>Colour Concept – Leather sports seats†</b>																		
Anthracite/Blue	ZU	Black	Anthracite/Anthracite	■†									■†	■†				
Anthracite/Red	ZV	Black	Anthracite/Anthracite	■†	■†								■†					
Anthracite/Yellow	ZW	Black	Anthracite/Anthracite	■†			■†						■†					

■ Standard □ Optional at extra cost

\* Black, Yellow, Metallic and Pearl Effect paint are optional at extra cost.

† Optional at extra cost as part of Colour Concept pack. Colour Concept pack is not available until mid 2002.

## TECHNICAL SPECIFICATION.

	<b>E, S</b> <b>1.2 litre 55 bhp</b>	<b>E, S, SE</b> <b>1.2 litre 65 bhp</b>	<b>S, SE</b> <b>1.4 litre 16V 75 bhp</b>	<b>SE, Sport</b> <b>1.4 litre FSI 86 bhp</b>	<b>Sport</b> <b>1.4 litre 16V 100 bhp</b>
<b>Engine:</b>					
	Front transversely mounted 3 cylinder in-line – petrol, cast iron cylinder block, alloy cylinder head with single overhead camshaft	Front transversely mounted 3 cylinder in-line – petrol, cast iron cylinder block, alloy cylinder head with double overhead camshaft	Front transversely mounted 4 cylinder in-line – petrol, cast iron cylinder block, alloy cylinder head with double overhead camshaft	Front transversely mounted 4 cylinder in-line – petrol, aluminium/alloy cylinder block, aluminium cylinder head with double overhead camshaft	Front transversely mounted 4 cylinder in-line – petrol, cast iron cylinder block, alloy cylinder head with double overhead camshaft
Number of valves	2 per cylinder	4 per cylinder	4 per cylinder	4 per cylinder	4 per cylinder
Cubic capacity, ltrs/cc	1.2/1198	1.2/1198	1.4/1390	1.4/1390	1.4/1390
Bore/stroke, mm	76.5/86.9	76.5/86.9	76.5/75.6	76.5/75.6	76.5/75.6
Max. output, bhp/kw at rpm	55/40 4750	65/47 5400	75/55 5000	86/63 5000	100/74 6000
Max. torque, lbs.ft/Nm at rpm	78/106 3000	83/112 3000	93/126 3800	96/130 3500	93/126 4400
Compression ratio	10.8 : 1	10.5 : 1	10.5 : 1	12.0 : 1	10.5 : 1
Induction	Electronic multipoint injection, single cylinder injection	Electronic multipoint injection, single cylinder injection	Electronic multipoint injection, single cylinder injection	Direct petrol injection	Electronic multipoint injection system, single cylinder injection
Exhaust emission control	Catalytic converter lambda control	Catalytic converter lambda control	Catalytic converter lambda control	Catalytic converter lambda control	Catalytic converter lambda control
Fuel grade, minimum	Premium 95 RON unleaded	Premium 95 RON unleaded	Premium 95 RON unleaded	Premium 95 RON unleaded	Premium 95 RON unleaded
Battery, A (Ah)	220 (44)	220 (44)	220 (44)      280 (60)	220 (44)	220 (44)
Alternator, amps	70	70	70	110	70
<b>Transmission:</b>					
	Front wheel drive	Front wheel drive	Front wheel drive	Front wheel drive	Front wheel drive
Gearbox	5 speed manual	5 speed manual	5 speed manual    4 speed auto	5 speed manual	5 speed manual
<b>Performance (with half payload):</b>					
Top speed, mph (km/h) (where law permits)	95 (152)	101 (162)	107 (172)      104 (168)	111 (178)	116 (188)
Acceleration, secs 0 - 62 mph	17.5	14.9	12.9      15.3	12.1	10.9
ABI insurance group	TBA	2, 2, 3	3, 4      3, 4	TBA	6
<b>Environmental information:</b>					
Official fuel consumption according to EU Directive 99/94, mpg/ltr per 100 km					
Urban	35.8/7.9	36.7/7.7	31.7/8.9      27.2/10.4	36.2/7.8	31.4/9.0
Extra-urban	58.9/4.8	55.4/5.1	53.3/5.3      47.1/6.0	58.9/4.8	52.3/5.4
Combined	47.1/6.0	47.1/6.0	43.5/6.5      37.2/7.6	47.9/5.9	42.2/6.7
Fuel tank capacity, galls/ltrs	10.0/45	10.0/45	10.0/45      10.0/45	10.0/45	10.0/45
Official CO <sub>2</sub> emission, g/km*	144	144	156      182	142	161
Noise, dB	72	72	72      69	71	71

\* Please see page 69 for further information on CO<sub>2</sub> emissions.

Specifications subject to change without notice. Information correct as at 10 May 2002. Please note: All data subject to manufacturer's tolerances.

## TECHNICAL SPECIFICATION.

	<b>E, S</b> <b>1.2 litre 55 bhp</b>	<b>E, S, SE</b> <b>1.2 litre 65 bhp</b>	<b>S, SE</b> <b>1.4 litre 16V 75 bhp</b>	<b>SE, Sport</b> <b>1.4 litre FSI 86 bhp</b>	<b>Sport</b> <b>1.4 litre 16V 100 bhp</b>
<b>Running gear:</b>					
Front axle	Independent with McPherson struts and coil springs	Independent with McPherson struts and coil springs	Independent with McPherson struts and coil springs	Independent with McPherson struts and coil springs	Independent with McPherson struts and coil springs
Rear axle	Torsion beam with trailing arms	Torsion beam with trailing arms	Torsion beam with trailing arms	Torsion beam with trailing arms	Torsion beam with trailing arms
Steering	Power-assisted rack and pinion	Power-assisted rack and pinion	Power-assisted rack and pinion	Power-assisted rack and pinion	Power-assisted rack and pinion
Brake system	Servo assisted, diagonally split circuit with ABS	Servo assisted, diagonally split circuit with ABS	Servo assisted, diagonally split circuit with ABS	Servo assisted, diagonally split circuit with ABS	Servo assisted, diagonally split circuit with ABS
Front	Ventilated discs	Ventilated discs	Ventilated discs	Ventilated discs	Ventilated discs
Rear	Self-adjusting drums	Self-adjusting drums	Discs	Discs	Discs
Turning circle, ft/m	34.7/10.6	34.7/10.6	34.7/10.6	34.7/10.6	34.7/10.6
<b>Wheels and tyres:</b>					
Wheel size	5J x 14	5J x 14 <sup>1</sup>	5J x 14 <sup>1</sup>	6J x 14 <sup>2</sup>	6J x 15
Wheel type	Steel	Steel <sup>1</sup>	Steel <sup>1</sup>	Alloy 'Sao Paulo' <sup>2</sup>	Alloy 'Melbourne'
Tyre size	165/70 R14 81T	165/70 R14 81T <sup>1</sup>	165/70 R14 81T <sup>1</sup>	185/60 R14T <sup>2</sup>	195/50 R15V
Spare wheel	Full size steel	Full size steel	Full size steel	Full size steel	Full size steel
<b>Weights, lbs/kgs:</b>					
	Manual	Manual	Manual	Automatic	Manual
Unladen weight†	2426/1100	2586/1173	2609/1183	2686/1218	2639/1197
Gross vehicle weight	3330/1510	3418/1550	3440/1560	3528/1600	3484/1580
Payload†	904/410	831/377	831/377	842/382	845/383
Axle load limit: Front	1676/760	1808/820	1830/830	1918/870	1874/850
Rear	1676/760	1720/780	1720/780	1720/780	1720/780
<b>Trailer load limits, lbs/kgs:</b>					
Braked 12% incline	1544/700	1764/800	2205/1000	2646/1200	2205/1000
Unbraked	1103/500	1103/500	1103/500	1103/500	1103/500
Towbar load	110/50	110/50	110/50	110/50	110/50
Max. roof load	165/75	165/75	165/75	165/75	165/75
<b>Max. luggage capacity, cu.ft (litres):</b>					
	VDA measuring method using 200 x 100 x 50 mm blocks		VDA measuring method using 200 x 100 x 50 mm blocks		
With rear seat upright	8.8 (250)	8.8 (250)	8.8 (250)	8.8 (250)	8.8 (250)
With rear seat folded	36.3 (1030)	36.3 (1030)	36.3 (1030)	36.3 (1030)	36.3 (1030)

† Figures are calculated in accordance with manufacturer's criteria.

<sup>1</sup> SE models have 6J x 14 'Sao Paulo' alloy wheels with 185/60 R14T tyres and anti-theft wheel bolts.

<sup>2</sup> Sport models have 6J x 15 'Melbourne' alloy wheels with 195/50 R15V tyres and anti-theft wheel bolts.

Specifications subject to change without notice. Information correct as at 10 May 2002. Please note: All data subject to manufacturer's tolerances.



## TECHNICAL SPECIFICATION.

	<b>E, S</b> <b>1.9 litre SDI 64 bhp</b>	<b>S, SE, Sport</b> <b>1.4 litre TDI PD 75 bhp</b>	<b>Sport</b> <b>1.9 litre TDI PD 100 bhp</b>
<b>Engine:</b>			
	Front transversely mounted 4 cylinder in-line – diesel, cast iron cylinder block, alloy cylinder head with single overhead camshaft	Front transversely mounted 3 cylinder in-line – diesel, cast iron cylinder block, alloy cylinder head with single overhead camshaft	Front transversely mounted 4 cylinder in-line – diesel, cast iron cylinder block, alloy cylinder head with single overhead camshaft
Number of valves	2 per cylinder	2 per cylinder	2 per cylinder
Cubic capacity, ltrs/cc	1.9/1896	1.4/1422	1.9/1896
Bore/stroke, mm	79.5/95.5	79.5/95.5	79.5/95.5
Max. output, bhp/kw at rpm	64/47 4400	75/55 4000	100/74 4000
Max. torque, lbs.ft/Nm at rpm	92/125 1600	144/195 2200	177/240 1800
Compression ratio	19.5 : 1	19.5 : 1	19.0 : 1
Induction	Direct injection – distributor pump, naturally aspirated	Direct injection – with unit injectors, turbocharged with intercooler	Direct injection – with unit injectors, turbocharged with intercooler
Exhaust emission control	Catalytic converter	Catalytic converter	Catalytic converter
Fuel grade, minimum	Diesel	Diesel	Diesel
Battery, A (Ah)	340 (70)	340 (70)	340 (70)
Alternator, amps	70	70	70

<b>Transmission:</b>			
	Front wheel drive	Front wheel drive	Front wheel drive
Gearbox	5 speed manual	5 speed manual	5 speed manual

<b>Performance (with half payload):</b>			
Top speed, mph (km/h) (where law permits)	99 (160)	106 (170)	117 (188)
Acceleration, secs 0 - 62 mph	17.0	13.6	10.7
ABI insurance group	2, 2	4, 5, 5	6

<b>Environmental information:</b>			
Official fuel consumption according to EU Directive 99/94, mpg/ltr per 100 km			
Urban	44.1/6.4	49.6/5.7	43.5/6.5
Extra-urban	68.9/4.1	68.9/4.1	68.9/4.1
Combined	57.6/4.9	61.4/4.6	56.5/5.0
Fuel tank capacity, galls/ltrs	10.0/45	10.0/45	10.0/45
Official CO <sub>2</sub> emission, g/km*	132	124	135
Noise, dB	71	73	74

\* Please see page 69 for further information on CO<sub>2</sub> emissions.

† Figures are calculated in accordance with manufacturer's criteria.

<sup>1</sup> SE models have 6J x 14 'Sao Paulo' alloy wheels with 185/60 R14T tyres and anti-theft wheel bolts.

<sup>2</sup> Sport models have 6J x 15 'Melbourne' alloy wheels with 195/50 R15V tyres and anti-theft wheel bolts.

	<b>E, S</b> <b>1.9 litre SDI 64 bhp</b>	<b>S, SE, Sport</b> <b>1.4 litre TDI PD 75 bhp</b>	<b>Sport</b> <b>1.9 litre TDI PD 100 bhp</b>
<b>Running gear:</b>			
Front axle	Independent with McPherson struts and coil springs		
Rear axle	Torsion beam with trailing arms		
Steering	Power-assisted rack and pinion		
Brake system	Servo assisted, diagonally split circuit with ABS		
Front	Ventilated discs	Ventilated discs	Ventilated discs
Rear	Self-adjusting drums	Discs	Discs
Turning circle, ft/m	34.7/10.6	34.7/10.6	34.7/10.6
<b>Wheels and tyres:</b>			
Wheel size	5J x 14	5J x 14 <sup>1,2</sup>	6J x 15
Wheel type	Steel	Steel <sup>1,2</sup>	Alloy 'Melbourne'
Tyre size	165/70 R14 81T	165/70 R14 81T <sup>1,2</sup>	195/50 R15V
Spare wheel	Full size steel	Full size steel	Full size steel
<b>Weights, lbs/kgs:</b>			
	Manual	Manual	Manual
Unladen weight†	2752/1248	2774/1258	2822/1280
Gross vehicle weight	3594/1630	3616/1640	3660/1660
Payload†	842/382	842/382	838/380
Axle load limit: Front	1985/900	2007/910	2051/930
Rear	1720/780	1720/780	1720/780
<b>Trailer load limits, lbs/kgs:</b>			
Braked 12% incline	1764/800	2205/1000	2646/1200
Unbraked	1103/500	1103/500	1103/500
Towbar load	110/50	110/50	110/50
Max. roof load	165/75	165/75	165/75
<b>Max. luggage capacity, cu.ft (litres):</b>	VDA measuring method using 200 x 100 x 50 mm blocks		
With rear seat upright	8.8 (250)	8.8 (250)	8.8 (250)
With rear seat folded	36.3 (1030)	36.3 (1030)	36.3 (1030)

Specifications subject to change without notice. Information correct as at 10 May 2002. Please note: All data subject to manufacturer's tolerances.

## STANDARD EQUIPMENT.

Safety and Security:		E	S	SE	Sport
ABS:	Anti-lock brakes	■	■	■	■
Airbags:	Driver's airbag	■	■	■	■
	Front passenger's airbag	■	■	■	■
	Front seat side impact airbags	■	■	■	■
Alarm:	With interior protection and remote central locking	-	□	■	■
Body:	Fully galvanised with 12-year anti-corrosion warranty	■	■	■	■
	Door side impact protection	■	■	■	■
	Rigid safety cell with front and rear crumple zones	■	■	■	■
Central locking:	With security protection and key operation	■	■	-	-
	Anti-hijack internal central locking button	-	■	■	■
	Electronic engine immobiliser, coded transponder	■	■	■	■
ESP:	Electronic Stabilisation Programme	□	□	□	□
Head restraints:	Front and rear	■	■	■	■
	High level third rear brake light	■	■	■	■
	Isofix child seat preparation (2 outer in rear seat)	■	■	■	■
	Laminated windscreen	■	■	■	■
Seat belts:	Front three-point height-adjustable seat belts with tensioners	■	■	■	■
	Rear 2 x three-point seat belts	■	■	■	■

### Functional Equipment:

Door mirrors:	Electrically-adjustable with wide angle vision on driver's side	■	■	■	■
	Painted in body colour	-	-	■	■
Cigarette lighter		■	■	■	■
Computer:	Multifunction, single and total journey memories. Information given on: Driving time, average fuel consumption, distance driven, range, average speed and external temperature (with electronic air conditioning the external temperature is shown in the air conditioning display)	□	□	□	■
Front fog lights:	Heated windscreen washer jets	□	□	□	■
Headlights:	Halogen clear	■	■	■	■
	Heated rear window	■	■	■	■
In-car entertainment:	'Beta' radio/cassette with 4 speakers, 4 digit security code, flashing LED and detachable roof aerial with 2 x 20 watt output FM/MW manual/seek tuning and RDS/EON	■	■	-	-
	'Gamma' radio/cassette with 8 speakers, 4 digit security code, flashing LED and detachable roof aerial with 4 x 20 watt output FM/MW manual/seek tuning and RDS/EON	□	□	■	■
	CD autochanger, 6 disc, dash-mounted	□	□	□	■
Lowered sports suspension		-	-	□	■
Power-assisted steering		■	■	■	■
Steering column:	Height and reach adjustable	■	■	■	■
Steering wheel:	Four-spoke	■	-	-	-
	Four-spoke, leather rimmed	□	■	■	■
Sunroof:	Glass electric slide and tilt	□	□	□	□
Warning buzzer for lights if left on		■	■	■	■
Windows:	Electric front with comfort closure and roll back safety system	-	■	■	■
	Rear manual windows, 5 door models	■	■	■	■
Wipers:	Front wash/wipe with 4 speeds and interval delay	■	■	■	■
	Rear screen wiper with automatic wash/wipe and interval delay	■	■	■	■

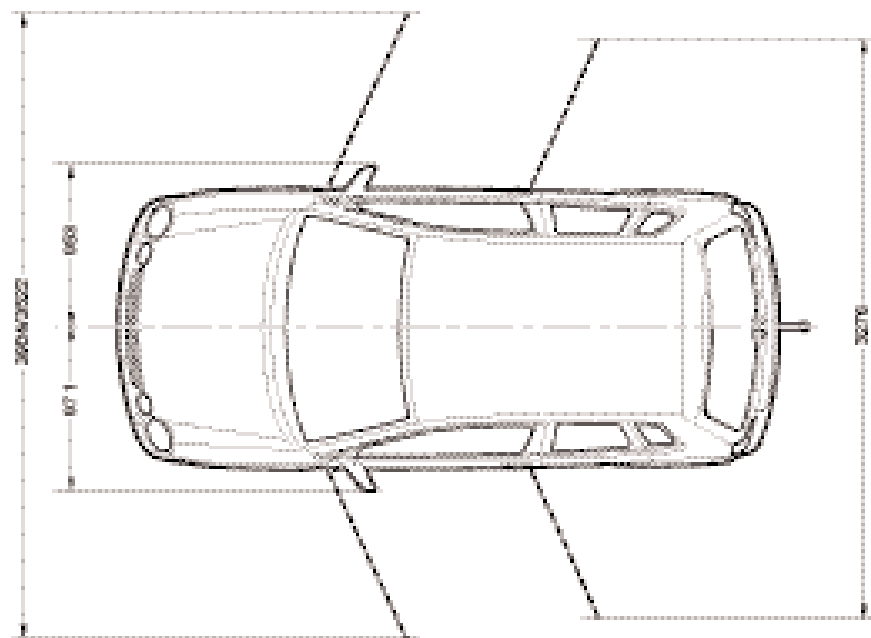
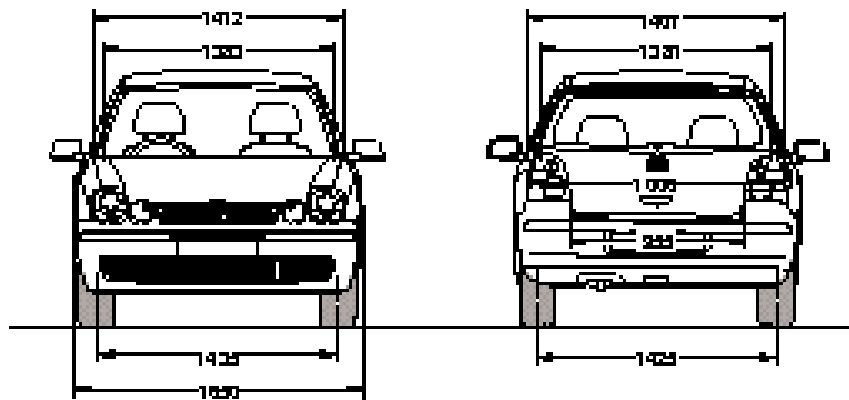
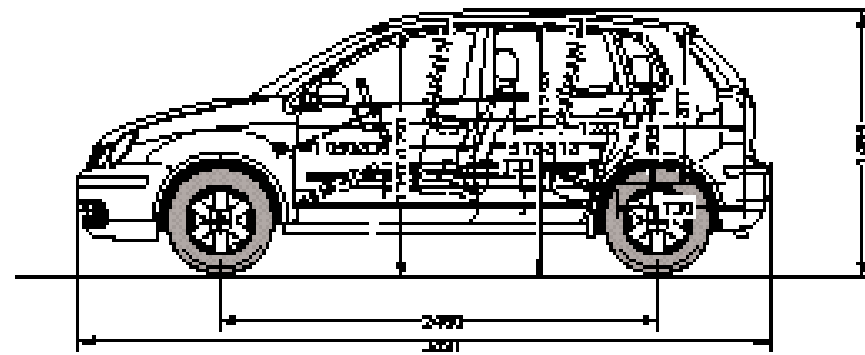
Interior Equipment and Styling:		E	S	SE	Sport
Ashtray:	Illuminated, in centre console	■	■	■	■
Carpet:	In luggage area	■	■	■	■
Centre console		■	■	■	■
Cup holder mounted in centre console		□	■	■	■
Heating:	Air blending and ventilation system with 4 speed fan	■	■	■	■
	Air conditioning – manual 'Climatic'	□	■	■	■
Instruments:	Speedo and rev counter, service interval display, fuel and temperature gauge, low fuel warning light, blue instrument illumination	■	■	■	■
Interior lighting		■	■	■	■
Load sill protection		■	■	■	■
Luggage compartment load lashing points x 4		■	■	■	■
Luggage cover:	Parcel shelf	■	■	■	■
Seating:	Driver's and front passenger's height adjustment	□	■	■	■
	Easy entry (3 door only)	-	■	■	■
	1/3 to 2/3 split folding rear seat	□	■	■	■
	Rear bench seat	■	-	-	-
	Rear seat centre armrest	-	-	■	-
	Front sports seats	-	-	-	■
Storage:	Drawer under driver's and front passenger's seats	□	■	■	■
	Front door side pockets	■	■	■	■
	Storage shelf on driver's side	■	■	■	■
Sun visors:	Driver's and front passenger's	■	■	■	■
	Third sun visor	-	-	■	■
Upholstery:	'Magic' cloth	■	■	-	-
	'Maxima' cloth	-	-	■	-
	'Scala' cloth	-	-	-	■
Vanity mirrors:	Driver's and front passenger's with cover	■	■	■	■
	Driver's and front passenger's with illumination	-	-	■	■

### Exterior Equipment and Styling:

Bumpers:	Painted in body colour with black bump strip	■	■	■	■
Door handles:	Black	■	■	-	-
	Painted in body colour	-	-	■	■
Fuel filler flap:	Lockable	■	■	■	■
Green tinted glass		■	■	■	■
Indicators:	Front, white lenses	■	■	■	■
	Rear, darkened lenses	■	■	■	■
Side rubbing strips, black		■	■	■	■
Wheels:	5J x 14 steel wheels with full size wheel trims with 165/70 R14 81T tyres	■	■	-	-
	Four 6J x 14 'Sao Paulo' alloy wheels including anti-theft wheel bolts with 185/60 R14T tyres	□	□	■	-
	Four 6J x 15 'Melbourne' alloy wheels including anti-theft wheel bolts with 195/50 R15V tyres	-	□	□	■
	Full size steel spare wheel	■	■	■	■

■ Standard □ Optional - Not available

## EXTERIOR DIMENSIONS.



All figures in millimetres.

## GLOSSARY.

**ABS (Anti-lock Braking System).** The ABS system prevents the wheels from locking during heavy or emergency braking, enabling the vehicle to remain steerable. When braking, wheel speed sensors measure the road wheel speed and, should one or more wheels start to lock, the system reduces brake pressure to that wheel.

**EDL (Electronic Differential Lock).** EDL improves driving and steering characteristics when accelerating on road surfaces where each wheel has a different degree of traction. The system operates automatically and is combined with the ABS system. Using the ABS wheel sensors, EDL monitors the speed of the individual driving wheels. When a difference in driving wheel speed is detected (i.e. when one wheel starts to spin due to differences in road surfaces, e.g. due to water or ice), the system brakes the spinning wheel, transferring engine power to the wheel with the best traction. EDL is active in forward and reverse.

**Electronic engine immobiliser.** Each car has a unique 'code transponder' fitted within the ignition key. When an attempt is made to start the engine, the engine management system interrogates the transponder and if the incorrect code is received (i.e. the wrong key is used), the engine will not run.

**EON (Enhanced information concerning Other Networks).** Ensures that all traffic announcements within a traffic programme area are put through.

**ESP (Electronic Stabilisation Programme) with Hydraulic brake assistance ('brake assist').** ESP is designed to stabilise the dynamic handling response of the vehicle by counteracting any tendency towards oversteer or understeer. The ESP constantly compares the actual movement of the vehicle with predetermined values and, according to the situation, ESP reacts by braking the outer front or inner rear wheel (according to direction of slip) and automatically adjusting the engine's output. Brake assist recognises an emergency braking situation and applies maximum braking, controlled by the ABS system, to ensure that the best possible braking is achieved.

**FSI – Fuel Stratified Injection.** This new lean-burn technology utilises direct petrol injection to precisely control the quantity of fuel injected and the fuel spray pattern and, thus, combustion in the cylinders. Under part throttle conditions, using 'Stratified Charge Mode' mode, the mixture can be run very lean (up to 43:1 air/fuel ratio), drastically improving fuel consumption and thus reducing CO<sub>2</sub> emissions. As part of the FSI concept, Volkswagen use NO<sub>x</sub> Catalysts, high-pressure common-rail injection and advanced combustion chamber design. To maximise fuel consumption benefits of FSI technology, ultra-low sulphur fuel (under 10 parts per million) must be used.

**RDS (Radio Data System).** The radio receiver uses additional data sent by the station to display the name of the station you are listening to and, given poor reception, it will retune the selected station to an alternative frequency if available. The system can also provide local traffic reports, interrupting the current station, CD or cassette if required.



## VOLKSWAGEN SERVICE FOR YOUR PEACE OF MIND.

**The Volkswagen Warranty. 3-year Warranty.** All Volkswagen Polos now come with a 3-year/60,000 miles warranty, which protects your car against the failure of most mechanical and electrical components due to manufacturing defects. This comprises a 2-year manufacturer's warranty with unlimited mileage plus a further 1-year/60,000 miles (whichever is soonest) Retailer Warranty. Should the mileage exceed 60,000 miles within the first two years, the manufacturer's 2-year warranty will still be valid. If an additional warranty for subsequent years or higher mileage is desired, it may be purchased from any authorised Volkswagen retailer; however, this additional warranty must be purchased before the mileage reaches 59,999. Cover is subject to the car being serviced and maintained at an authorised Volkswagen retailer according to the manufacturer's recommendations. Full details of the 3-year warranty are available from your Volkswagen retailer. This 3-year warranty is only available on vehicles purchased in the UK through an authorised Volkswagen retailer.

**3-year Paint Warranty.** The paintwork of the Polo is covered against manufacturing defects for a period of 3 years. Naturally, the Polo must be cared for in compliance with the operating instructions which will be found in your vehicle handbook. Please consult your Volkswagen retailer for full warranty details.

**12-year Body Protection Warranty.** The internal body sections and panels of the Polos are covered against rusting through from the inside for a period of 12 years. Naturally, the Polo must be cared for in compliance with the operating instructions. Please consult your Volkswagen retailer for full warranty details.

**Service Intervals for Petrol and Diesel Engines.** Full details of what checks and work are recommended at each service are contained in the Service Book and your Volkswagen retailer will be able to advise you of any particular requirements.

**Approved Accessories.** A comprehensive range of accessories from alloy wheels to carpet mats is available to complement the factory-fitted option list. Volkswagen Approved accessories purchased and fitted by your Volkswagen retailer at the point of vehicle sale will also benefit from the 3-year vehicle warranty.

**Volkswagen Insurance.** Competitive insurance premiums are available to Volkswagen owners through Volkswagen Insurance Service (Great Britain) Limited. Volkswagen Insurance guarantee that all repair work is undertaken by an authorised Volkswagen retailer using only genuine parts, thus ensuring that the manufacturer's warranties remain in force. For a quotation, telephone Linkline: 0845 600 8006.

**Extended Warranty.** You may purchase additional protection from your retailer or contact 0870 9000 115.

**Volkswagen Finance.** Volkswagen Finance offers a dedicated service to meet the needs of both the business user and the private motorist. We can help you choose the right type of finance and will tailor the package to meet your specific requirements. Please consult your Volkswagen retailer for details.

**Volkswagen Assistance.** Every new car is registered for Volkswagen Assistance for 1 year. This provides vehicle recovery in the unlikely event of a breakdown (subject to conditions). Volkswagen Assistance can also be purchased for subsequent years. For full details, please contact your Volkswagen retailer.

**Tax Free Sales.** For full details, please contact your Volkswagen retailer.

**CO<sub>2</sub> Emission.** The weight of a vehicle will influence the level of CO<sub>2</sub> emission it produces; as a result, vehicles with higher levels of specification and factory-fitted options may emit higher levels of CO<sub>2</sub>.

The CO<sub>2</sub> figure quoted for each vehicle is the maximum possible. The unladen weight of the vehicle is calculated by range at the time of manufacture and the maximum possible CO<sub>2</sub> emission for that weight range is applied according to the Council Directive 80/1268EEC as amended by Commission Directive 1999/100/EC on the approximation of the laws of the member states relating to the carbon dioxide emissions and the fuel consumption of motor vehicles.

**Please Note:** Some illustrations in this brochure do not necessarily reflect UK specifications and may not be available. Consequently, controls and some items of equipment are positioned differently for the UK.

The specifications contained in this brochure are for information purposes only and are subject to change. If you require any specific feature, you must consult your Volkswagen retailer who is regularly updated with any change in specification. Please check model availability and full specification details with your Volkswagen retailer prior to ordering.

All vehicles fitted with accessories in this brochure have been registered.

**Note:** We would like to advise you that telephone calls to Volkswagen Customer Care may be monitored and recorded as part of our training and quality assurance processes. All our monitoring and recording processes meet Ofcom regulations.

**EXPERIENCE THE  
DIFFERENCE AT YOUR  
VOLKSWAGEN RETAILER.**



Model shown is Sport.