

Volkswagen Information Service. Telephone 0800 333 666

Internet: www.volkswagen.co.uk

© Volkswagen Group United Kingdom Limited 2002.

Issue: 1 June 2002. Printed in UK.

PVW000NSB



The Sharan

2003 Model Year



The Sharan.

Engineering for all the family.



Model shown is SL.

6 *Philosophy*

8 *Interior Design*

16 *Safety*

22 *Engines*

26 *Quality*

32 *The Sharan SL*

34 *The Sharan Sport*

36 *The Sharan Carat*

38 *Optional Equipment*

42 *Accessories*

50 *Colours and Upholstery*

58 *Technical Specification*

62 *Standard Equipment*

64 *Dimensions and Glossary*

66 *Volkswagen Service*

The Sharan.

ART MUSEUM



Model shown is Sport.

*With the Sharan, you enter
a totally new world of driving. One
in which travel itself becomes an
experience to savour. Driving is no
longer a chore because all around
you are space, freedom and
comfort. In fact, there's ample
room for the driver and six adult
passengers to sit back, relax and
enjoy their individually formed
'business class' seats. But the
other beauty of the Sharan is its
flexibility – by removing the rear
seats you can open up a massive
2,610 cubic litres of storage space.*



Model shown is Carat.



Raise your *expectations*
and have them *fulfilled*.



Model shown is the Sport fitted with optional parking sensor, front and rear electronic climate control and ESP.



The storage compartment in the centre console is softly lined to prevent rattling.



The front and middle windows can be electrically operated via switches in the driver's door. Standard on Sport and Carat models.



The height-adjustable driver's seat is standard on all models. Sport and Carat models also have a height-adjustable front passenger seat.

When travelling in the Sharan, you'll enjoy a different perspective of the world. There are two reasons for this – the large areas of glazing and the high positioning of the seats. The result is improved all-round vision for the driver and excellent views of the passing scenery for your passengers.

The styling of the Sharan is extremely resourceful. It manages to blend a compact exterior size with a spacious interior, allowing great comfort and freedom for both driver and passengers. In fact, its overall size is comparable with a medium sized saloon car, thereby ensuring that the Sharan remains manoeuvrable and easy to drive. But there are plenty of

other reasons why it's such a joy to get behind the wheel of the Sharan. Like the convenient position of all the switches and controls, plus the attractive design and high quality materials throughout the interior. But the optical highlight must surely be the instrument dials – edged in chrome with red needles and a fetching blue illumination.



The middle row of three seats folds down to allow easy access to the two rear seats.
Model shown is the Sport fitted with optional front and rear electronic climate control and ESP.

As you climb aboard the Sharan, you'll immediately notice three things – space, comfort and quality. Every model in the Sharan range is equipped with five single seats in the rear. And with wide opening doors, it's extremely easy for your passengers to get in and out of the Sharan.

Choose a Sharan and you'll also gain great versatility. Because with a few simple steps you can transform your car from a spacious saloon to a vehicle capable of transporting large, bulky items.

When the rear seats are folded down, a useful table is

formed which is ideal for a business meeting or a family picnic. You can even specify 180° rotating front seats as an optional extra, allowing you to face your companions around a table.*

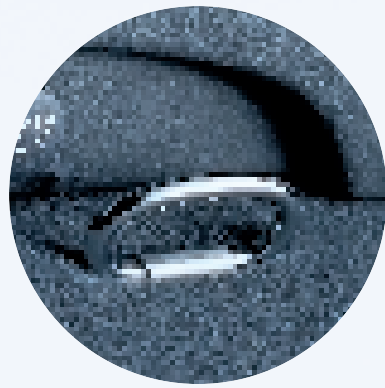
** Not available on 4MOTION or automatic models.*



Each of the five rear seats can be folded down to reveal a table top with integrated cup holder.



As an option at extra cost, you can specify 180° rotating front seats. Not available on 4MOTION or automatic models.

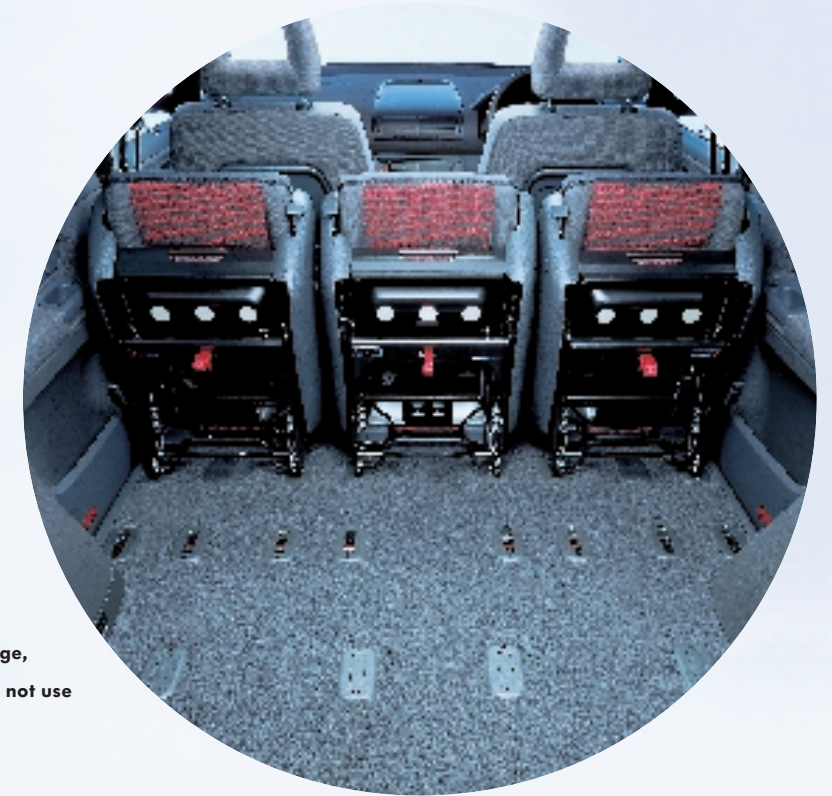


Luggage can be securely fastened through the pre-fitted tying loops.

When you need to transport the bulkiest of items, the Sharan is at your disposal. Its ingenious seats can either fold down or be removed altogether, creating a huge 2,610 cubic litres of capacity, according to ISO 3832. Once removed, the seat sockets have their own covers to ensure that no luggage will get caught

and damaged. It's just another small feature that highlights the attention to detail in the Sharan.

Loading and unloading often means sliding items on the lip of the boot, which can damage the paintwork. Not with the Sharan, as it's fitted with a specially designed loading edge protector.



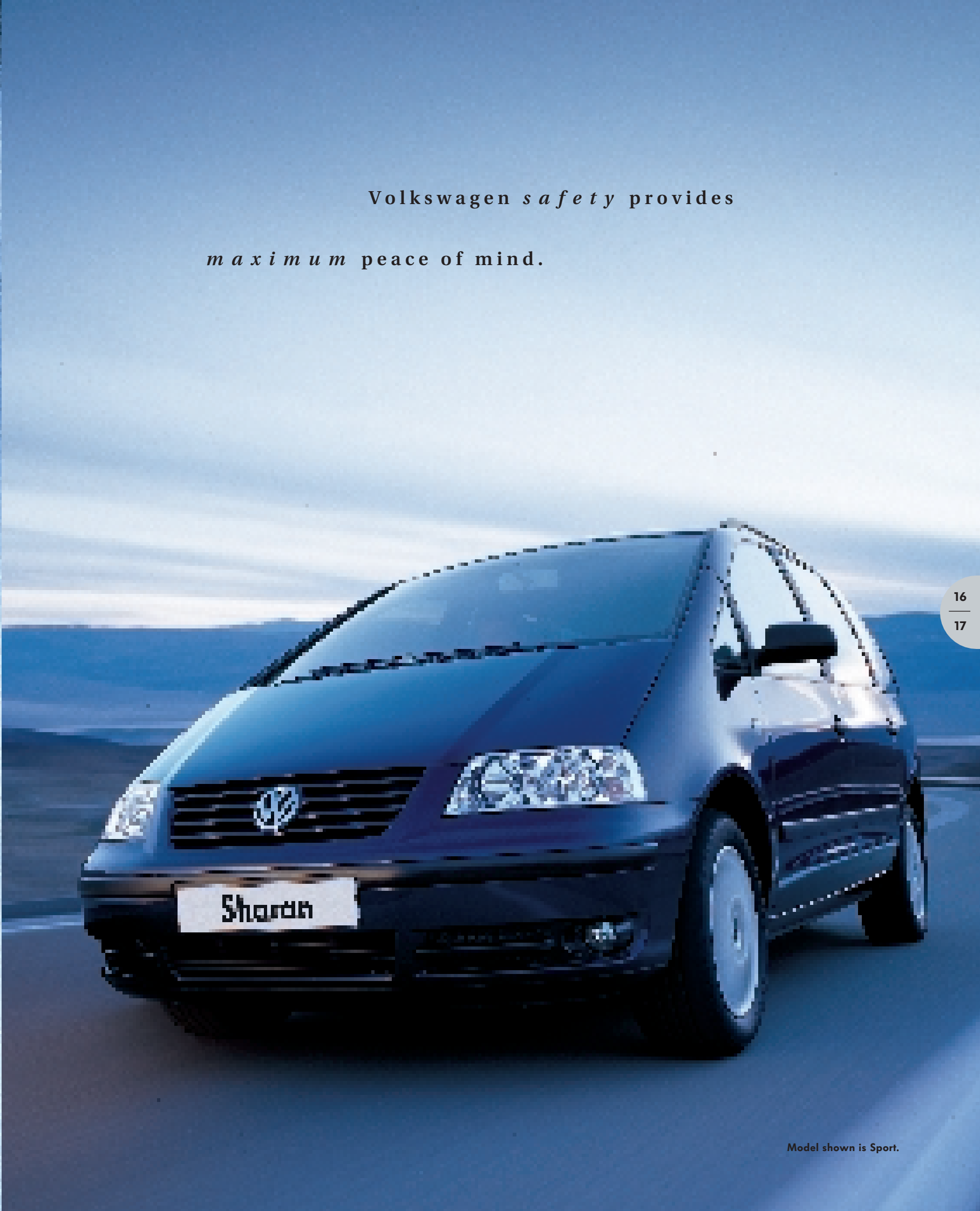
Need room for large, bulky items? Why not use your Sharan?

Please note that leather upholstery is optional at extra cost, 180° rotating front seats are not available on 4MOTION or automatic models.





Volkswagen *safety* provides
maximum peace of mind.



16
17

Model shown is Sport.



Performance can be viewed in many different ways. Some look for top speed, others seek acceleration statistics. At Volkswagen we also include engine efficiency, roadholding and safety. We believe such a measurement is a more accurate reflection of the Sharan's superior engineering.

The chassis, for example, is extremely rigid, so that in the event of an accident, damage is minimised and controlled around the inner survival zone. Its strength also helps create the kind of roadholding that sets the Sharan apart from the competition.



Electronic Stabilisation Programme (ESP) is available as an optional extra.

The chassis works in harmony with the suspension by ironing out uneven road surfaces, providing a smooth ride along a straight road, but also perfect balance through a corner.

Braking is also a feature that we are justifiably proud of in the Sharan. Its short stopping distance is achieved through an advanced Anti-lock Braking System (ABS) that works in conjunction with Electronic Brake-pressure Distribution (EBD). This system regulates the front and rear brake pressure via the ABS system.

Volkswagen's Electronic Stabilisation Programme (ESP) is standard on V6 models and optional on certain other engines. This intelligent system detects critical situations developing, such as understeer. It responds in milliseconds by applying the brakes to individual wheels and automatically adjusting the engine's power.*

** Please refer to page 62 for details.*

Whilst ABS and ESP are active safety features that help you avoid accidents in the first instance, the Sharan is also equipped with many passive safety features. Passive features are there to protect you in the unfortunate event of an accident.

The Sharan's great protection begins with the immense strength built into its design. The crash optimised bodywork was initially conceived by computer simulations to

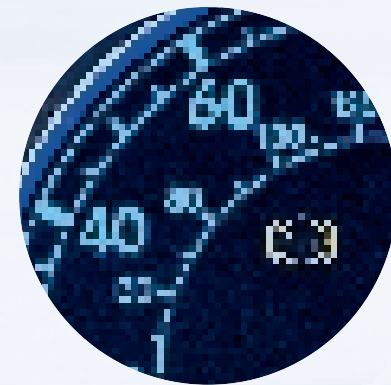
identify the most vulnerable areas. These areas then received added strength, like the vertical fixed supports and columns that are developed to absorb energy. After computer simulations, actual crash test scenarios were performed to verify effectiveness. The results are clear to see – the Sharan surpasses the strictest safety conditions with ease.

When it comes to the highest protection, airbags play an

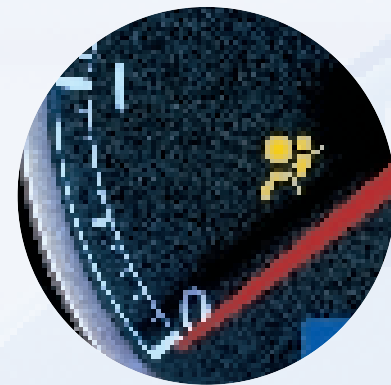
equally important role. Airbags have been one of the most significant safety advancements in recent years and the Sharan not only benefits from driver's and front passenger's airbags, but also front seat side airbags to provide added protection for the driver and front passenger. Following an accident, airbags activate in milliseconds to cushion the front occupants and minimise any injuries.



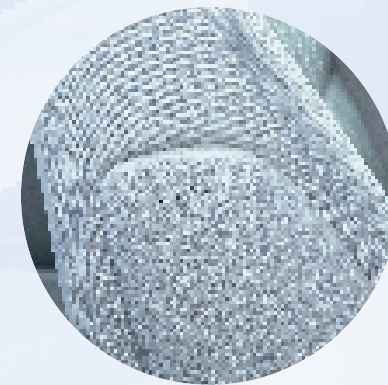
Middle row, centre seat three-point seat belts are standard on all Sharan models.



The proven safety of ABS (Anti-lock Braking System) is standard on all Sharan models.



Front airbags are standard to protect the driver and front seat passenger.



Seat-mounted side airbags are also standard, protecting the driver and front passenger from side impact.

The seat belts in the Sharan are designed for maximum comfort and protection. The driver's and front passenger's seat belts are height-adjustable. All seven seats are equipped with three-point belts, with the outer belts on the middle row also being height-adjustable.

Every seat is fitted with an adjustable head restraint, not just for comfort, but as a safety measure in the event of a collision.

Protecting the youngest members of your family receives special attention with integrated

child safety seats. These seats take away all the hassle of installing and removing a traditional child seat. Two are fitted as standard to the Sharan SL model (in the outer seats of the middle row) and up to two more can be fitted as an optional extra. On Sport and Carat models, up to four seats can be fitted as optional extras. There is also the innovative Isofix child seat mounting system which allows the Volkswagen approved

The integrated child seat has three settings suited to children between 9-18 kg, 15-25 kg and 22-36 kg. The seat shown has been set up for children classified by ECE-R 44 in class 1 (9-18 kg). Please refer to the safety section of the Sharan Owner's Manual for operating instructions.

Isofix child safety seat to be fixed securely to the Sharan. Please note that the Isofix mounting system is not available with integrated child seats. In addition, all rear doors are fitted with child locks.



The summit of engineering *excellence*.

The Sharan V6.



22
23

Model shown is Carat.

When you drive a Sharan, you'll experience a method of travel that's hugely different from your average saloon. Add a V6 engine and you have a unique mode of transport. One that can cruise effortlessly along a motorway in refined comfort, yet deliver impressive acceleration and speed when required.

The secret of the V6 engine is a powerful 2.8 litre capacity that develops an appetising 204 bhp. Its torque is equally exciting, delivering 265 Nm at just 3,400 rpm, thereby providing great flexibility throughout the range of the 6 speed gearbox.

As an alternative there are four further engines available – two petrol and two diesel. As a choice of petrol engines, there's a 2.0 litre 115 bhp unit available for the SL, or a more powerful turbocharged 1.8 litre version, developing 150 bhp, for the SL and Sport.

Two diesels are available for the Sharan, both 1.9 litre, both featuring Volkswagen's new 'Pumpe Düse' (PD) technology that is capable of producing an injection pressure of over 2,000 bar.

Both TDI PD engines produce excellent torque, resulting in good pulling power and reduced exhaust emissions.

For those who prefer the relaxed driving of an automatic transmission, there are two options available. A 4 speed automatic for the 2.0 litre petrol engine or a 5 speed automatic tiptronic available for the 1.8T, V6 or 1.9 litre TDI PD 115 bhp.

Our highly efficient 1.9 litre TDI PD 115 bhp engine benefits from turbocharging and 'Pumpe Düse' technology.

Diesels have long been associated with outstanding fuel economy, saving money through more miles per gallon. But have you ever considered a diesel because of its performance? Experience one of the latest generation diesels from Volkswagen and you'll be in for a pleasant surprise.

We've patented a number of technological breakthroughs such as the 'Pumpe Düse' injection technique that injects fuel under extreme pressure directly into the combustion chamber. This results in a much more efficient combustion process, thereby combining low fuel consumption with excellent

performance. For example, the 1.9 litre TDI PD 115 bhp can reach 112 mph, where the law permits, accelerate from 0 - 62 mph in 13.7 seconds, yet return 42.8 mpg* over the Combined fuel cycle. Air cooling and variable turbo geometry add to its performance capability, allowing a smooth supply of power even at low revolutions.

A further advancement has been a 'pilot injection' system. This ignites a minuscule amount of fuel before the actual combustion and serves to reduce engine noise. It means that the quietness and smoothness of Volkswagen's latest generation diesels makes them hardly distinguishable from a petrol engine.

* According to EU Directive 99/94. Please see pages 58 and 59 for fuel consumption figures.

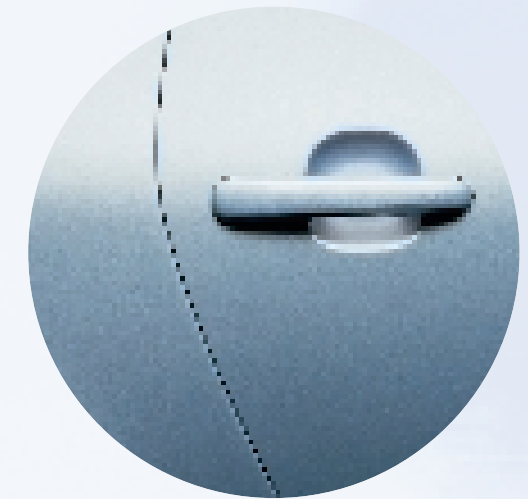


All manual Sharan models feature a 6 speed gearbox to obtain maximum efficiency from the available power.



Pure *quality*. Whether you measure
it in millimetres or years.





**Narrow gaps are a sure sign
of the highest build quality.**

*There are numerous ways
of measuring the quality of a car.
One is to drive it for many years
and see how it withstands the test
of time. The easier way is to look
closely at its build quality.*

*Study the Sharan and you'll
see the signs of true quality – small,
consistent gaps between each and
every panel. Each single part is
constructed to the highest standard
and fits like a jigsaw to create a
chassis with immense strength
and rigidity.*

*We also take several other
measures to ensure your Sharan
retains its attractive looks. Like
zinc treatment to corrosion
endangered areas and hot wax
flooding in all hollow spaces to
prevent damp penetration.*

*To ensure gleaming
paintwork for many years to
come, we subject every Sharan
to several layers of paint. Finally,
all Sharans come with a 6-year
body protection warranty, giving
you added peace of mind.*

You can fit an enormous amount into the Sharan.

Like a *comprehensive* range of
standard equipment.



Model shown is Sport.



The Sharan SL.

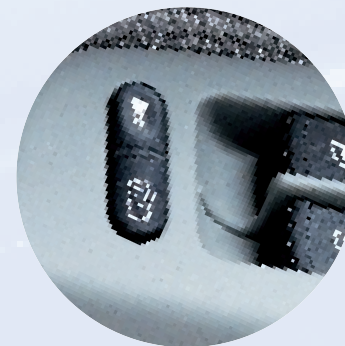
An MPV can provide the space, comfort and practicality required for business needs or the growing family. Decide upon the Sharan SL and you'll appreciate the many standard features others would class as extras, such as two

integrated child safety seats, four airbags, three-point seat belts and adjustable head restraints for all seven seats.

The standard equipment list continues with air conditioning, an alarm with interior protection and

remote central locking, heat insulated tinted glass, electric rear vent windows, and a multifunction computer.

And to power your Sharan SL you can choose from two petrol and two diesel engines.



With central locking, all doors can be locked from the inside at the touch of a button.



Manual air conditioning, combined with a dust and pollen filter, gives a pleasant driving environment.



The electric rear vent windows can be operated from the comfort of the front seats. Standard on SL and optional on Sport and Carat models.



The Sharan Sport.

The Sharan Sport epitomises engineering excellence. It manages to combine the practical side of owning an MPV with the style and performance that inspires

everyday driving. Its character stems from a choice of two highly capable engines – a 1.8 litre 20V Turbo or a 1.9 litre TDI PD 115 bhp with 'Pumpe Düse' injection system.

Take one look at the Sharan Sport and its intentions are perfectly clear – 16 inch 'Magny-Cours' alloy wheels, sports suspension, height-adjustable front sports seats with lumbar support, rear

Model shown is the Sport fitted with optional parking sensor, front and rear electronic climate control and ESP.

sports seats, front fog lights, dash-mounted 6 CD autochanger, 'Cosmo' cloth upholstery, and a leather rimmed steering wheel. But why not make up your own mind with a test drive at your local Volkswagen retailer?



'Magny-Cours' 16" alloy wheels with 215/55 tyres are standard on the Sport.



Front fog lights are standard on the Sport.



The Sharan *Carat*.

The Sharan Carat is a sophisticated traveller. It blends the latest technology with a luxurious specification.

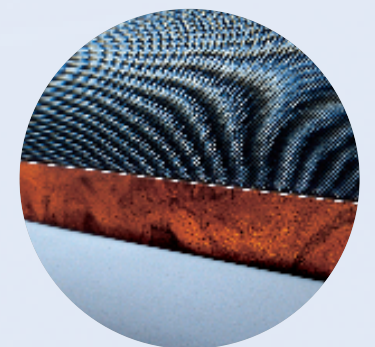
The signs are there when you view its gleaming paintwork and 16 inch 'Magny-Cours' alloy wheels. But it's from the inside where you'll truly appreciate its limousine qualities. For example, you'll find sumptuous Leather/Alcantara trimmed seats complemented by walnut wood inserts around the dashboard, doors, gear knob and ashtray lid.

If you are chauffeuring VIPs, you can remove one of the rear seats and fit comfortable armrests to the remaining 4 seats, creating an even more spacious and relaxing environment. This is made even more inviting by electronic climate control that even has its own temperature setting for the rear compartment.

Naturally, there are electrically-adjustable front and middle windows (the rear vent windows open manually), dash-mounted 6 CD autochanger, electrically-adjustable and heated door mirrors, heated front seats and carpet mats throughout. So next time, why not travel in style?

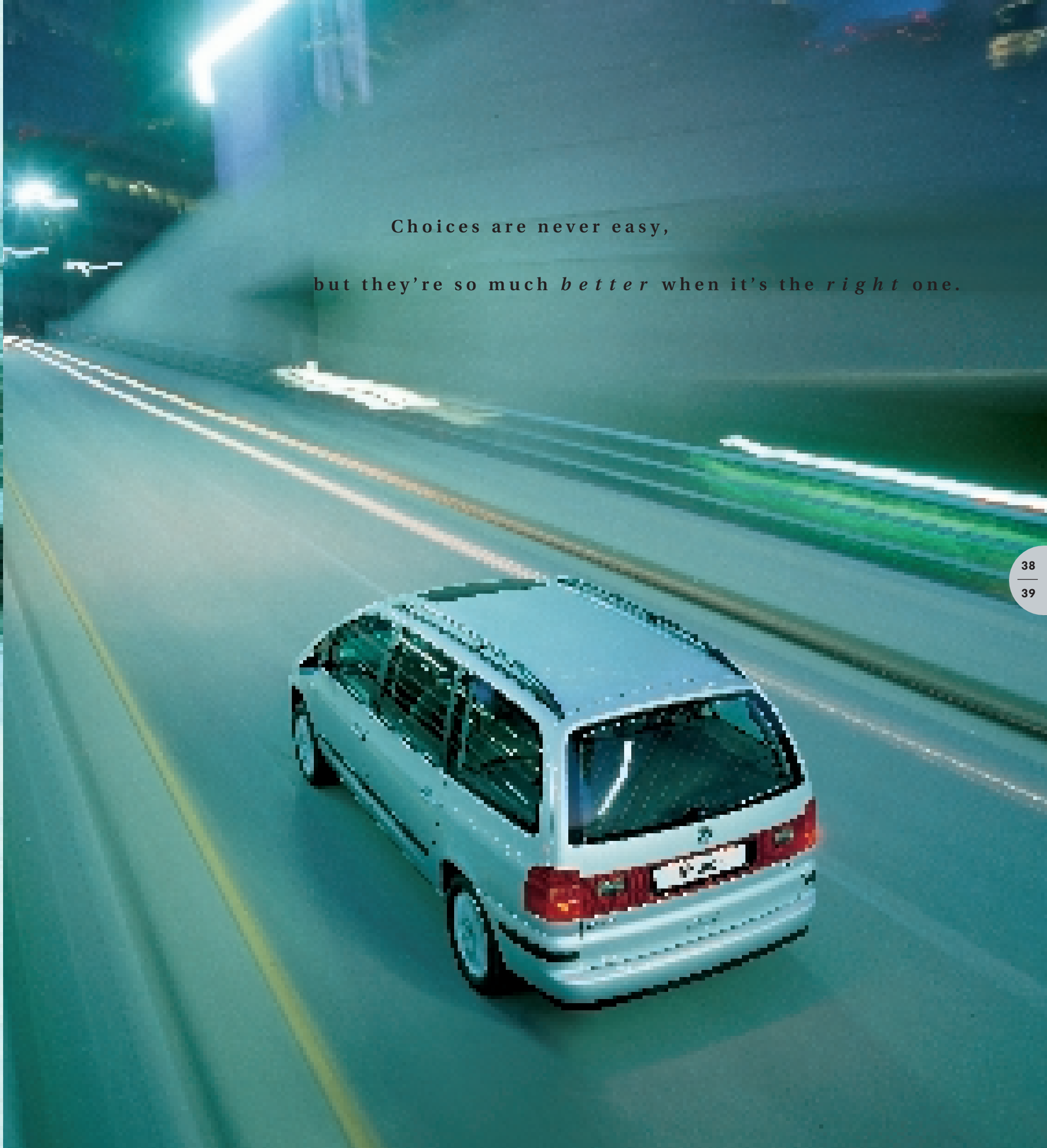


The walnut wood trim extends to the doors on the Carat.



Walnut wood inserts are typical of the exclusive finish throughout the Carat.

Model shown is the Carat
1.9 litre TDI PD 115 bhp
with optional front and rear
electronic climate control.



Choices are never easy,
but they're so much *better* when it's the *right* one.

Electric glass sunroof

This sunroof is easy to operate thanks to automatic pre-selection. Just turn the dial and let the sunroof open to your desired setting.

When the sunroof is open, a wind deflector automatically extends to reduce buffeting and a blind prevents dazzling from the sun. Please note that this option is not available in conjunction with 4MOTION or front and rear electronic climate control.



A glass electric sunroof provides a refreshing atmosphere.

Climate control

As an alternative to manual air conditioning, you can opt for electronic climate control on SL and Sport models. Climate control electronically monitors the temperature to your desired setting. Climate control is not only useful on warm summer days, it can also help rapidly demist a windscreen in damp conditions.

Climate control – front and rear

With the Sharan, we appreciate that the rear passengers may prefer a different temperature setting than the front. You can specify front and rear electronic climate control on Sport and Carat models, giving the rear passengers their own temperature control and vents. Please note that this option is not available in conjunction with electric rear vent windows or sunroof.

Automatic dimming rear-view mirror

The automatic dimming rear-view mirror is designed to stop you becoming dazzled from behind. If light is judged excessive, it will darken.



The automatic dimming interior rear-view mirror darkens if a following car's lights are too high.



Electronic climate control consistently maintains your desired temperature.



Front and rear electronic climate control accommodates the needs of the rear passengers.

Navigation/radio systems

The combined satellite navigation and radio unit with colour screen offers route guidance via the display of road maps, route information, spoken instructions and visual arrow symbols in the centre of the instrument panel. Radio functions and control of the optional 6 CD autochanger are also provided. The navigation CD reader is mounted in the top of the unit. Please note that the unit will only accept navigation CDs and NOT audio CDs.

Available as a factory-fitted option at extra cost on Sport and Carat models.

Alternatively you can choose the monochrome navigation system, radio and CD player in one unit. Route guidance is supplied via arrow symbols in both the unit and a display in the centre of the instrument panel together with audible recommendations. The CD slot can be used for music CDs when the navigation system is not in use. In addition, this system will also operate the Volkswagen optional 6 CD autochanger. The monochrome navigation system is available as a factory-fitted option at extra cost on Sport and Carat models.



Radio and satellite navigation system with colour screen.



Navigation, radio and CD player in one unit with monochrome screen.

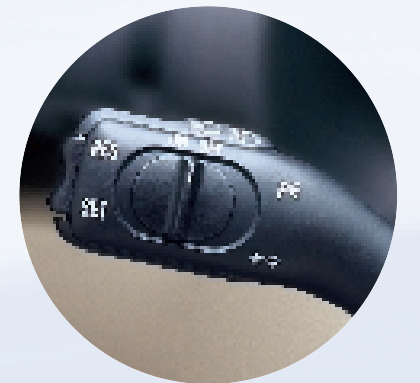
Please note the separate front-loading single CD player, dash-mounted 6 CD autochanger or navigation/radio system are not available in conjunction with each other.



With a parking sensor you'll have more spaces to choose from.

Parking sensor

This ingenious system makes parking in the smallest spaces so much easier. Sensors in the front and rear bumpers operate by ultrasound and emit a bleep. As objects get closer, the sound signal becomes more frequent.



Cruise control helps take the strain out of long journeys.

Cruise control

For relaxed motorway driving, cruise control is the perfect answer. Operational at speeds above approximately 20 mph, the system can be set to maintain a constant speed.



With a choice of accessories,
the Sharan becomes an *integral*
part of your *lifestyle*.



Whether for aesthetic appeal or greater practicality, the Volkswagen accessories range could have the answer for those who desire something extra.

All items are specifically designed for Volkswagen models to ensure a harmonious fit.



Roof spoiler.
Part No. 7M0 071 640 B 9AX

If you seek maximum performance from your Volkswagen, the sports range is sure to appeal.

Take, for example, the roof spoiler that is wind tunnel tested to achieve maximum aerodynamic efficiency.



Estemo 8J x 17.
Part No. 7D4 071 492 666

If you'd like to complement your Sharan's stylish lines and add a touch of individuality, why not consider alloy wheels? The 17 inch 'Estemo' is precision engineered from lightweight alloy for performance, durability and aesthetic appeal.

Our anti-theft wheel bolts (Part No. ZGB 7M0 071 591 A) will keep them securely in place.

Quality hi-fi

All Sharan models are equipped with a high quality radio/cassette player – the 8 speaker 'Beta' in the Sharan SL and the 10 speaker 'Gamma' in all other models.

If you'd like to add a CD facility, tested and installed to Volkswagen standards, here's your chance. You can choose either a single, front-loading CD player that fits neatly into the second DIN slot or, alternatively, a 6 CD capacity autochanger for hours of uninterrupted entertainment.



Front-loading CD player.
Part No. 1J0 057 119 C



6 CD autochanger.
Part No. 1J5 057 111 A

Please note the head restraints shown are for 2001 model year.
2003 model year head restraints are tubular, not solid. See pages 12-13 for illustration.



Bobsy G3 booster seat with removable back (not shown). Suitable for children of approximately 4 to 12 years or for a weight of 17-36 kg.
Base Part No. 000 019 904 B
Sleep support Part No. 000 019 905 B

Protecting the youngest passengers

Volkswagen is at the industry forefront when it comes to child safety and the development of Isofix, an innovative child safety system, is proof of our commitment to safety. The Isofix child seat mounting system allows the Volkswagen approved ISOFIX DUO child

safety seat to be fixed securely to the Sharan, and is suitable for children aged between 8 months and 4 years or a weight of 9-18 kg.

The G1 ISOFIX DUO is just one of the child safety seats in the Bobsy range. Three other seats, the G2, the G3 and the G1-3 cater for a wider age range. Please ask your retailer for further information.

Please note the head restraints shown are for 2001 model year.
 2003 model year head restraints are tubular, not solid. See pages 12-13 for illustration.



Flexible loadliner
(fits behind third row of seats).
Part No. 7M0 061 160 B

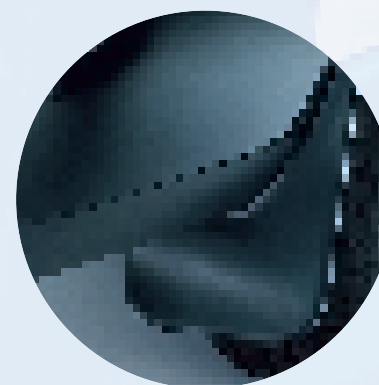


Heavy duty loadliner (requires removal of third row of seats).
Part No. 7M0 061 160

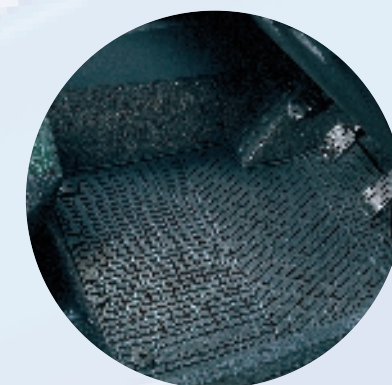
Cleaning made easy

As the proud owner of a Sharan, we appreciate that you'll want to maintain it in first-class condition. At Volkswagen we believe the easiest way to protect your Sharan is to restrict dirt in the first place. So we've developed

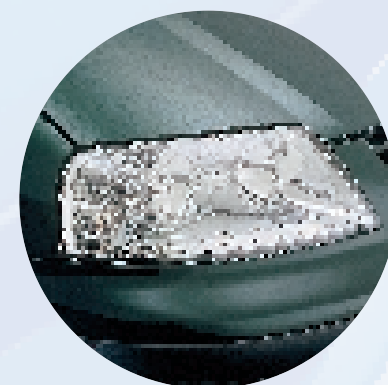
an extensive range of protective products. You can choose from rubber mats, mudflaps or a choice of two highly practical loadliners. All designed to minimise dirt and make light work of cleaning.



Mudflaps.
Front Part No. 7M0 075 101 A
Rear Part No. 7M0 075 111 A



Rubber mat sets.
Front Part No. ZGB 7M3 061 501
Other sections also available.
Please ask your retailer for details.



Headlight protectors.
Part No. ZGB 7M3 072 100



Hydraulic bicycle lift (two shown).
Part No. 4D0 071 128 D

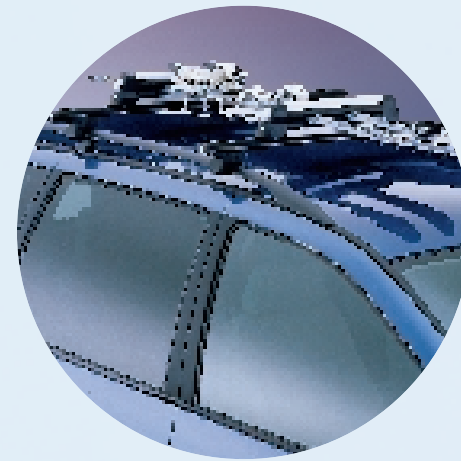


Rear bike rack. For transport of three bicycles and a maximum weight of 45 kg. Not in conjunction with rear roof spoiler.
Part No. 7M0 071 104 B

Practical travel solutions

The Sharan is desired for its fine engineering, practical qualities and flexible accommodation. But, occasionally, you may wish to retain its comfortable interior seats, yet still carry additional loads such as bikes, windsurf boards, skis,

or simply additional holiday luggage. So why not consider the Volkswagen roof system? The system is based on two roof bars that attach to the roof rails.



Ski/Snowboard holder (4 pairs skis/2 snowboards max).
Part No. 3B0 071 129 (6 pairs skis/4 snowboards max).
Part No. 3B0 071 129 A



Ski holder (holds 6 pairs or 3 pairs using only two fixings, leaving room for other equipment such as a bicycle carrier or a Davos ski and luggage box).
Part No. 357 071 129 A

Roof bars.
Part No. 7M0 071 151

This removes the need for any additional fixing holes or external mountings that could possibly damage your paintwork. In a matter of seconds the bars fix firmly in place and can hold a variety of attachments – from a bike rack to a luggage box.



Polar 500 ski and luggage box.
Part No. 191 071 170 B

Please note the head restraints shown are for 2001 model year.
2003 model year head restraints are tubular, not solid. See pages 12-13 for illustration.

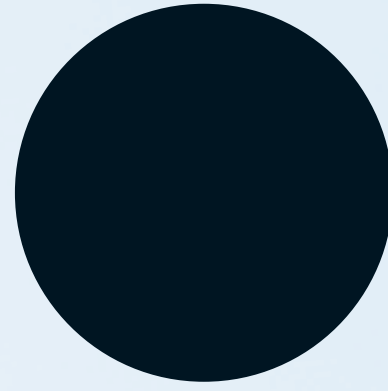


What is your children's
favourite colour?

Please note that black roof rails are fitted as standard to all Sharan models.

Exterior paintwork.

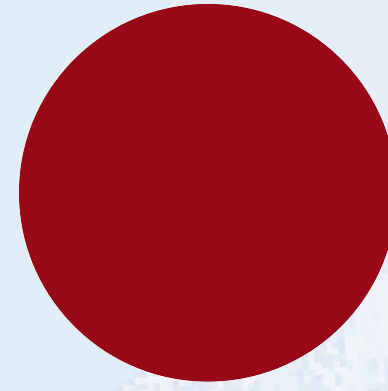
Non-Metallic paint



Black (A1)

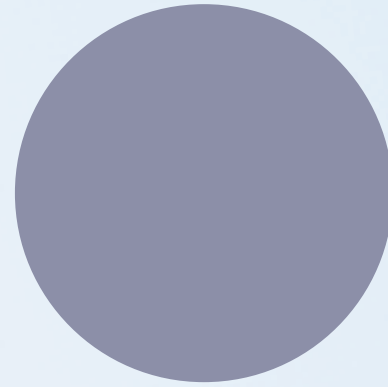


Cool White (B7)



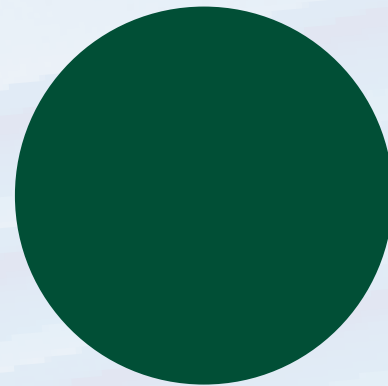
Tornado Red (G2)

Metallic paint*

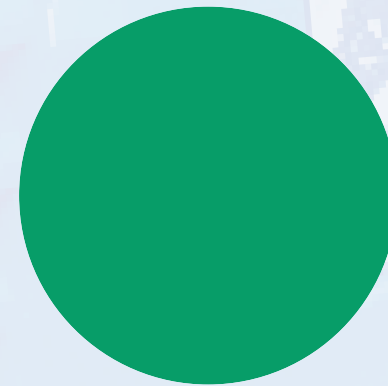


Satin Silver (X1)

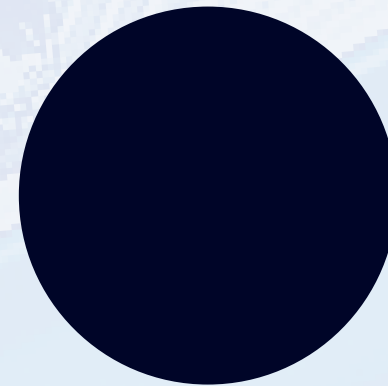
Pearl Effect paint*



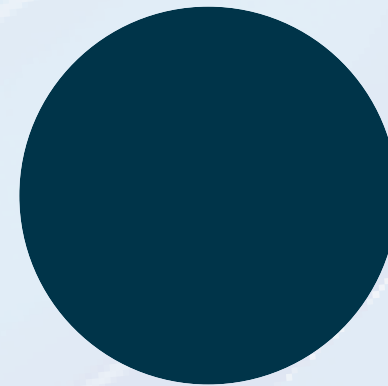
Bright Green (T3)



Green Collection (6F)



Indigo Blue (7D)



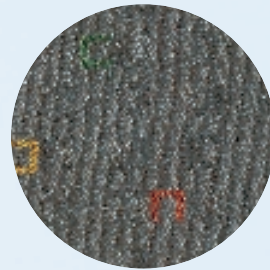
Blue Atmosphere (7E)

Please note: The print process does not allow for exact reproduction of the paint colours. For further details, please contact your Volkswagen retailer.

* Metallic and Pearl Effect paint are optional at extra cost.

A choice of upholstery.

SL
'Tools' cloth

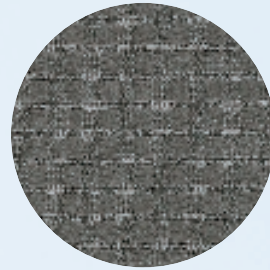


Flannel Grey (BP)

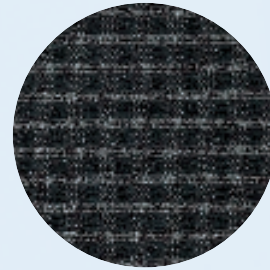


Anthracite (BQ)

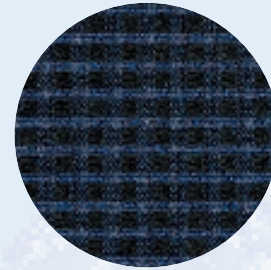
Sport
'Cosmo' sports seats



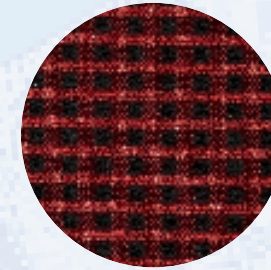
Flannel Grey/Flannel Grey (DT)



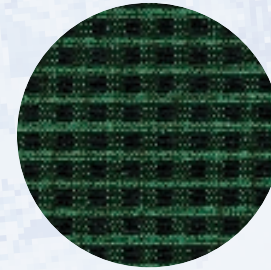
Anthracite/Anthracite (DU)



Blue/Anthracite (DV)

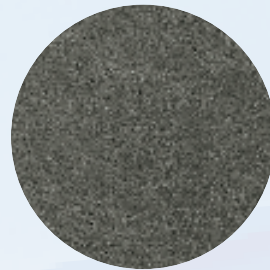


Red/Anthracite (DW)

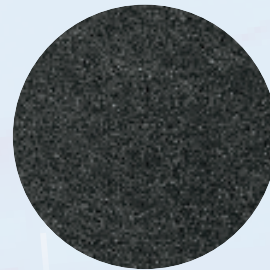


Green/Anthracite (DX)

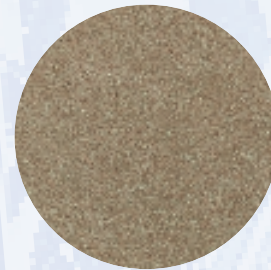
Carat
Leather/Alcantara sports seats



Flannel Grey (JV)

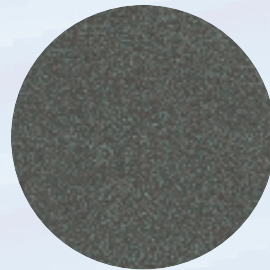


Anthracite (JW)

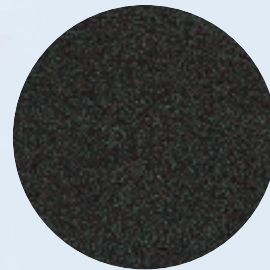


Beige (JX)

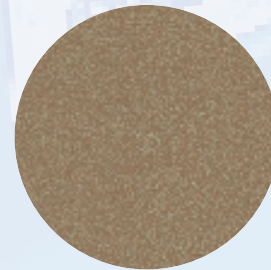
Sport, Carat
Optional leather sports seats



Flannel Grey (YM)



Anthracite (YN)



Beige (YP)

Please note: The print process does not allow for exact reproduction of the upholstery colours. For further details, please contact your Volkswagen retailer.

Colour combinations.

Seat upholstery		Carpets	Dashboard	Black A1	Cool White B7	Tornado Red G2	Satin Silver Metallic X1*	Bright Green Pearl Effect T3*	Green Collection Pearl Effect 6F*	Indigo Blue Pearl Effect 7D*	Blue Atmosphere Pearl Effect 7E*
SL – ‘Tools’ cloth											
Flannel Grey	BP	Flannel Grey	Anthracite/Flannel Grey	●	●	●	●	●	●	●	●
Anthracite	BQ	Anthracite	Anthracite/Anthracite	●	●	●	●	●	●	●	●
Sport – ‘Cosmo’ sports seats											
Flannel Grey/Flannel Grey	DT	Flannel Grey	Anthracite/Flannel Grey	●	●	●	●	●	●	●	●
Anthracite/Anthracite	DU	Anthracite	Anthracite/Anthracite	●	●	●	●	●	●	●	●
Blue/Anthracite	DV	Anthracite	Anthracite/Anthracite	●	●	-	●	-	-	●	●
Red/Anthracite	DW	Anthracite	Anthracite/Anthracite	●	●	●	●	-	-	-	-
Green/Anthracite	DX	Anthracite	Anthracite/Anthracite	●	●	-	●	●	●	-	-
Carat – Leather/Alcantara sports seats¹											
Flannel Grey	JV	Flannel Grey	Anthracite/Flannel Grey	●	●	●	●	●	●	●	●
Anthracite	JW	Anthracite	Anthracite/Anthracite	●	●	●	●	●	●	●	●
Beige	JX	Beige	Anthracite/Beige	●	-	●	-	●	●	●	●
Sport, Carat – Optional leather sports seats¹											
Flannel Grey	YM	Flannel Grey	Anthracite/Flannel Grey	○	○	○	○	○	○	○	○
Anthracite	YN	Anthracite	Anthracite/Anthracite	○	○	○	○	○	○	○	○
Beige	YP	Beige	Anthracite/Beige	○	-	○	-	○	○	○	○

● Standard ○ Optional at extra cost - Not available

¹ Consists of: leather upper surface of seat base and backrest, leather door panel centre and door pull, front part of head restraints and top part of front and rear armrests, leather rimmed steering wheel, handbrake grip and gear lever gaiter (not auto).

Please note:

* Metallic and Pearl Effect paint are optional at extra cost.

Technical specification.

	SL 2.0 litre 115 bhp		SL, Sport 1.8 litre 20V Turbo		Carat 2.8 litre V6, V6 4MOTION			SL 1.9 litre TDI PD 90 bhp		SL, Sport, Carat 1.9 litre TDI PD 115 bhp		
Engine:	<i>Front transversely mounted</i>		<i>Front transversely mounted</i>		<i>Front transversely mounted</i>			<i>Front transversely mounted 4 cylinder in-line – diesel, cast iron cylinder block, alloy cylinder head with single overhead camshaft</i>				
	<i>4 cylinder in-line – petrol, cast iron cylinder block, alloy cylinder head with single overhead camshaft</i>		<i>4 cylinder in-line – petrol, cast iron cylinder block, alloy cylinder head with double overhead camshaft</i>		<i>6 cylinder 15° 'V' – petrol, cast iron cylinder block, single alloy cylinder head with one camshaft per bank, variable valve timing</i>							
Number of valves	2 per cylinder		5 per cylinder		4 per cylinder			2 per cylinder		2 per cylinder		
Cubic capacity, ltrs/cc	2.0/1984		1.8/1781		2.8/2792			1.9/1896		1.9/1896		
Bore/stroke, mm	82.5/92.8		81.0/86.4		81.0/90.3			79.5/95.5		79.5/95.5		
Max. output, bhp/kw at rpm	115/85 5200		150/110 5500		204/150 6200			90/66 4000		115/85 4000		
Max. torque, lbs.ft/Nm at rpm	125/170 2600		162/220 1850		196/265 3400			177/240 1900		229/310 1900		
Compression ratio	10.5 : 1		9.5 : 1		10.5 : 1			18.0 : 1		18.0 : 1		
Induction	Multipoint injection		Multipoint injection Turbocharger with intercooler		Multipoint injection, variable inlet manifold			Direct injection Turbocharger with intercooler		Direct injection Turbocharger with intercooler		
Ignition	Electronic		Electronic		Electronic			–		–		
Exhaust emission control	Regulated catalyst		Regulated catalyst		Regulated catalyst			Unregulated catalyst		Unregulated catalyst		
Fuel grade, minimum	Premium 95 RON unleaded		Premium 95 RON unleaded		Premium 95 RON unleaded			Diesel		Diesel		
Battery, V/A (Ah)	12/280 (60)		12/280 (60)		12/340 (70)			12/340 (70)		12/340 (70)		
Alternator, amps	120		120		120			90		90		
Transmission:	<i>Front wheel drive</i>		<i>Front wheel drive</i>		<i>Front wheel drive</i>		<i>Four wheel drive¹</i>		<i>Front wheel drive</i>		<i>Front wheel drive</i>	
Gearbox	6 spd man 4 spd auto		6 spd man 5 spd auto tiptronic		6 spd man 5 spd auto tiptronic		6 spd man		6 spd man		6 spd man 5 spd auto tiptronic	
Performance (with half payload):												
Top speed, mph (km/h) (where law permits)	110 (177) 107 (173)		124 (199) 121 (195)		135 (217) 132 (212) 133 (214)			103 (166)		112 (181) 110 (177)		
Acceleration, secs 0 - 62 mph	15.2 17.2		10.9 12.1		9.9 10.4 10.3			17.2		13.7 15.1		
ABI insurance group	11A 11A		11 TBA		15D 15D 15D			12E		12E 12E		
Environmental information:												
Official fuel consumption according to EU Directive 99/94, mpg/ltr per 100 km												
Urban	21.6/13.1 19.1/14.8		21.2/13.3 19.2/14.7		19.1/14.8 16.8/16.8 18.2/15.5			34.0/8.3		32.8/8.6 28.5/9.9		
Extra-urban	36.7/7.7 32.5/8.7		37.2/7.6 32.8/8.6		33.2/8.5 30.7/9.2 30.4/9.3			48.7/5.8		51.4/5.5 43.5/6.5		
Combined	29.1/9.7 25.7/11.0		29.1/9.7 26.2/10.8		26.2/10.8 23.5/12.0 24.4/11.6			42.2/6.7		42.8/6.6 36.2/7.8		
Fuel tank capacity, galls/ltrs	15.4/70		15.4/70		15.4/70			15.4/70		15.4/70		
Official CO ₂ emission, g/km*	233 264		233 259		259 288 278			181		178 211		
Noise, dB	74 73		74 70		73 73 74			73		74 73		

¹ V6 4MOTION only.

* Please see page 67 for further information on CO₂ emissions.

Specifications subject to change without notice. Information correct as at 1 June 2002. Please note: All data subject to manufacturer's tolerances.

Standard equipment.

		SL	Sport	Carat
Safety and Security				
ABS:	Anti-lock brakes	●	●	●
Airbags:	Driver's airbag	●	●	●
	Front passenger's airbag	●	●	●
	Front seat side impact airbags	●	●	●
Alarm:	With interior protection	●	●	●
Body:	Door side impact protection	●	●	●
	Rigid safety cell with front and rear crumple zones	●	●	●
Central locking:	With security protection and radio wave remote control	●	●	●
	Electronic engine immobiliser, coded transponder	●	●	●
ESP:	Electronic Stabilisation Programme ¹ (standard with V6)	○	○	○
Head restraints:	Front and rear adjustable	●	●	●
	High level third brake light	●	●	●
	Integrated child seats, 2 child seats with slumber rolls, 2nd row, outer	●	○	○
	Isofix child seat preparation (not available with integrated child seats)	●	●	●
Seat belts:	Front height-adjustable three-point seat belts with tensioners	●	●	●
	2nd row, outer, individual height-adjustable three-point inertia reel	●	●	●
	2nd row, centre, individual three-point inertia reel	●	●	●
	3rd row, individual three-point inertia reel	●	●	●

Functional Equipment:

Door mirrors:	Manually adjustable, black	●	–	–
	Electrically heated and adjustable, black	○	–	–
	Electrically heated and adjustable, housing painted in body colour	–	●	●
	Dust and pollen filter	●	●	●
Computer:	Multifunction, single and total journey memories	●	●	●
	Information given on: Driving time, average fuel consumption, instantaneous fuel consumption, distance driven, average speed and external temperature	●	●	●
	Front fog lights	○	●	●
Headlights:	Electric height adjustment	●	●	●
	Combined headlight and fog light switch	●	●	●
	Heated rear window	●	●	●
In-car entertainment:	'Beta' radio/cassette with 4 digit security code and flashing LED	●	–	–
	2 x 20 watt output with FM/MW manual/seek tuning, RDS/EON	●	●	●
	Auto reverse mechanical tape deck	●	●	●
	GALA adjustable vehicle speed-responsive volume control	●	●	●
	8 speakers and rear side window aerial	●	●	●
	'Gamma' radio/cassette with 4 digit security code and flashing LED	○	●	●
	4 x 20 watt output with FM/MW manual/seek tuning, RDS/EON	●	●	●
	Logic tape deck with 'Dolby' and MSS Music Search System	●	●	●
	GALA adjustable vehicle speed-responsive volume control	●	●	●
	10 speakers and rear side window aerial	●	●	●
	Power-assisted steering	●	●	●

● Standard ○ Optional – Not available

¹ ESP is not available on 1.8 litre 20V Turbo and 1.9 TDI PD models with automatic tiptronic gearboxes.

² Not in conjunction with front and rear electronic climate control air conditioning.

³ Armrests can only be used with 4 rear seats and must be removed when using all 5 rear seats.

⁴ Carat models have 215/55 R16 95W tyres with 2.8 litre V6 and V6 4MOTION engines and 215/55 R16 95H tyres with 1.9 litre TDI PD 115 bhp engines.

Functional Equipment (continued):

		SL	Sport	Carat
	Sports suspension	–	●	–
Windows:	Electric front with roll back safety system	●	●	●
	Electric middle	–	●	●
	Manual rear vent windows	–	●	●
	Electric rear vent windows ²	●	○	○
Wipers:	2 speed with wash/wipe and intermittent wipe with adjustable delay	●	●	●
	Heated windscreen washer jets	●	●	●
	Rear screen wash/wipe with intermittent delay	●	●	●

Interior Equipment and Styling:

Carpet mats:	Front and middle	–	●	–
	Front, middle and rear	–	–	●
Cup holder:	Front x 2	●	●	●
Heating:	Air conditioning, manual – rear heater with separate control	●	●	–
	Air conditioning, electronic climate control – rear heater control	○	○	●
Instruments:	Speedo and rev counter, electronic odometer and trip, service interval display, fuel and temperature gauge, low fuel warning light, blue adjustable panel illumination	●	●	●
Interior lighting:	With time delay and front passenger reading light	●	●	●
	Rear reading lights x 4	–	●	●
	Luggage compartment lights	●	●	●
	Footwell illumination for driver and front passenger	–	●	●
Luggage cover:	Removable	○	●	●
	Luggage protection strips in chrome	–	●	●
Seating:	Front, with height adjustment	Driver's	Both	Both
	Front, centre armrests	●	●	●
	Front, with lumbar adjustment	–	Both	Both
	Front, sports seats	–	●	●
	Front, heated (in conjunction with leather upholstery)	–	○	●
	Rear, removable, reclining backrests and fore and aft adjustment x 5	●	–	–
	Rear, sports, removable, reclining backrests and fore and aft adjustment x 5	–	●	●
	Removable armrests ³	–	–	●
Steering wheel:	Height and reach adjustable	●	●	●
	Leather rimmed (in conjunction with leather pack)	○	●	●
Storage:	Glovebox with illumination, lockable	●	●	●
	Centre dash-mounted storage area with lid, including sunglasses storage	●	●	●
	Passenger's side storage area with lid, located above airbag	●	●	●
	Front door pockets	●	●	●
	Rear door pockets	●	●	●
	Rear storage areas	●	●	●
Upholstery:	'Tools' cloth	●	–	–
	'Cosmo' cloth	–	●	–
	Leather/Alcantara	–	–	●
Vanity mirrors:	Passenger's side	●	–	–
	Driver's and passenger's side, illuminated	–	●	●
Warning display:	Graphic display for door or tailgate open	●	●	●
	12V socket in luggage compartment	●	●	●

Standard equipment.

Exterior Equipment and Styling:

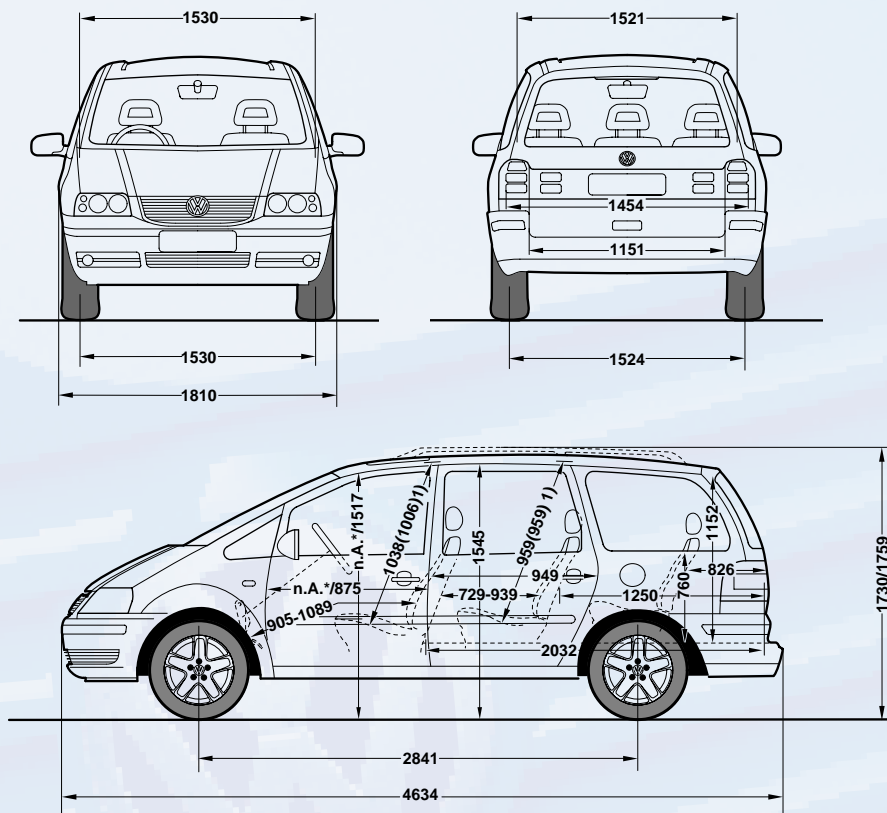
	SL	Sport	Carat
Bumpers: Painted in body colour with black bump strip	●	●	●
Door handles: Black	●	-	-
Painted in body colour	-	●	●
Front grille painted in body colour	●	●	●
Roof rails: Black	●	●	●
Side rubbing strips, black	●	●	●
Tinted glass: Heat insulating, green	●	●	●
Heat insulating, 35% tinted from B pillar backwards	●	●	○
Wheels: 6J x 16 steel wheels with 195/60 R16 C99/97H tyres and full size steel spare wheel	●	-	-
7J x 16 'Magny-Cours' alloy wheels with 215/55 R16 95H tyres, anti-theft wheel bolts and full size steel spare wheel	○	●	● ⁴
7J x 16 'Magny-Cours' alloy wheels with 215/55 R16 95W tyres, anti-theft wheel bolts and full size steel spare wheel	-	-	● ⁴

● Standard ○ Optional - Not available

⁴ Carat models have 215/55 R16 95W tyres with 2.8 litre V6 and V6 4MOTION engines and 215/55 R16 95H tyres with 1.9 litre TDI PD 115 bhp engines.

Exterior dimensions.

The Sharan:



All figures in millimetres.

Glossary.

ABS (Anti-lock Braking System)

The ABS system prevents the wheels from locking during heavy or emergency braking, enabling the vehicle to remain steerable. When braking, wheel speed sensors measure the road wheel speed and, should one or more wheels start to lock, the system reduces brake pressure to that wheel.

Engine Immobiliser

Each car has a unique 'code transponder' fitted within the ignition key. When an attempt is made to start the engine, the engine management system interrogates the transponder and if the incorrect code is received (i.e. the wrong key is used), the engine will not run.

RDS (Radio Data System)

The radio receiver uses additional data sent by the station to display the name of the station you are listening to and, given poor reception, it will retune the selected station to an alternative frequency if available. The system can also provide local traffic reports, interrupting the current station, CD or cassette if required.

4MOTION with 'Haldex' coupling

4MOTION is a new four wheel system which includes the 'Haldex' coupling mounted in the rear axle. This 'Haldex' coupling contains an electronically and hydraulically controlled multi-plate clutch that allows the engine power to be transferred to the wheels with the best traction. The coupling constantly regulates distribution of the drive between the front and rear axles and because the system is electronically controlled, it gives the optimum traction for all driving situations.

The advantages of the 4MOTION system are as follows:- Front wheel drive characteristics, very quick response, no drive train 'wind-up' when parking, compatible with different tyre sizes (e.g. space-saver temporary spare wheel). Allows car to be towed with the axle raised off the ground.

ESP (Electronic Stabilisation Programme)

ESP is designed to stabilise the dynamic handling response of the vehicle by counteracting any tendency towards oversteer or understeer. The ESP constantly compares the actual movement

of the vehicle with predetermined values and, according to the situation, ESP reacts by braking the outer front or inner rear wheel (according to direction of slip) and automatically adjusting the engine's output.

EDL (Electronic Differential Lock)

EDL improves driving and steering characteristics when accelerating on road surfaces where each wheel has a different degree of traction. The system operates automatically and is combined with the ABS system.

Using the ABS wheel sensors, EDL monitors the speed of the individual driving wheels. When a difference in driving wheel speed is detected (i.e. when one wheel starts to spin due to differences in road surfaces, e.g. due to water or ice), the system brakes the spinning wheel, transferring engine power to the wheel with the best traction. EDL is active in forward and reverse.

EON (Enhanced information concerning Other Networks)

Ensures that all traffic announcements within a traffic programme area are put through.

Volkswagen service

for your *peace* of mind.

The Volkswagen Warranty.

3-year Warranty.

All Volkswagen Sharans come with a 3-year/60,000 miles warranty, which protects your car against the failure of most mechanical and electrical components due to manufacturing defects. This comprises a 2-year manufacturer's warranty with unlimited mileage plus a further 1-year/60,000 miles (whichever is sooner) Retailer Warranty. Should the mileage exceed 60,000 miles within the first two years, the manufacturer's 2-year warranty will still be valid. If an additional warranty for subsequent years or higher mileage is desired, it may be purchased from any authorised Volkswagen retailer, however this additional warranty must be purchased before the mileage reaches 59,999. Cover is subject to the car being serviced and maintained at an authorised Volkswagen retailer according to the manufacturer's recommendations. Full details of the 3-year warranty are available from your Volkswagen retailer. This 3-year warranty is only available on vehicles purchased in the UK through an authorised Volkswagen retailer.

3-year Paint Warranty.

The paintwork of the Sharan is covered against manufacturing defects for a period of 3 years. Naturally, the Sharan must be cared for in compliance with the operating instructions which will be found in your vehicle handbook. Please consult your Volkswagen retailer for full warranty details.

6-year Body Protection Warranty.

The internal body sections and panels of the Sharan are covered against rusting through from the inside for a period of 6 years. Naturally, the Sharan must be cared for in compliance with the operating instructions. Please consult your Volkswagen retailer for full warranty details.

Service Intervals for Petrol and Diesel Engines.

Volkswagen has always been dedicated to protecting the environment. That's why many Volkswagen Sharans now come with a choice of service schedules – Extended and Variable Service regimes.

Your vehicle will be set to operate on Extended Service, which means an oil service is required at 10,000 miles or 12 months (whichever is sooner) with a main service required at 20,000 miles or 24 months (whichever is sooner).

Some engines can also be set to run on Variable Service regime. Please contact your Volkswagen retailer for further information.

Approved Accessories.

A comprehensive range of accessories from alloy wheels to carpet mats is available to complement the factory-fitted option list. Volkswagen Approved accessories purchased and fitted by your Volkswagen retailer at the point of vehicle sale will also benefit from the 3-year vehicle warranty.

Volkswagen Insurance.

Competitive insurance premiums are available to Volkswagen owners through Volkswagen Insurance Service (Great Britain) Limited. Volkswagen Insurance guarantee that all repair work is undertaken by an authorised Volkswagen retailer using only genuine parts, thus ensuring that the manufacturer's warranties remain in force. For a quotation, telephone Linkline: 0845 600 8006.

Extended Warranty.

You may purchase additional protection from your retailer or contact 0870 9000 115.

Volkswagen Finance.

Volkswagen Finance offers a dedicated service to meet the needs of both the business user and the private motorist. We can help you choose the right type of finance and will tailor the package to meet your specific requirements. Please consult your Volkswagen retailer for details.

Volkswagen Assistance.

Every new car is registered for Volkswagen Assistance for 1 year. This provides vehicle recovery in the unlikely event of a breakdown (subject to conditions). Volkswagen Assistance can also be purchased for subsequent years. For full details, please contact your Volkswagen retailer.

Tax Free Sales.

For full details, please contact your Volkswagen retailer.

CO₂ Emission.

The weight of a vehicle will influence the level of CO₂ emission it produces; as a result, vehicles with higher levels of specification and factory-fitted options may emit higher levels of CO₂.

The CO₂ figure quoted for each vehicle is the maximum possible. The unladen weight of the vehicle is calculated by range at the time of manufacture and the maximum possible CO₂ emission for that weight range is applied according to the Council Directive 80/1268EEC as amended by Commission Directive 1999/100/EC on the approximation of the laws of the member states relating to the carbon dioxide emissions and the fuel consumption of motor vehicles.

Please Note:

Some illustrations in this brochure do not necessarily reflect UK specifications and may not be available. Consequently, controls and some items of equipment are positioned differently for the UK.

The specifications contained in this brochure are for information purposes only and are subject to change. If you require any specific feature, you must consult your Volkswagen retailer who is regularly updated with any change in specification. Please check model availability and full specification details with your Volkswagen retailer prior to ordering.

All vehicles fitted with accessories in this brochure have been registered.

The TDI® is a registered trademark of VOLKSWAGEN AG.

Note:

We would like to advise you that telephone calls to Volkswagen Customer Care may be monitored and recorded as part of our training and quality assurance processes. All our monitoring and recording processes meet Ofcom regulations.



Discover the *difference*.

At your local Volkswagen retailer.



Model shown is SL.