

**BMW 1 Series  
3-door Sports hatch**

116i  
116i ES  
116i SE  
116i M Sport



**The Ultimate  
Driving Machine**



# The BMW 1 Series 116i 3-door Sports hatch

BMW UK



## Introduction

### BMW 1 Series 3-door

The BMW 1 Series sets the benchmark within the compact segment. It is the only car in its class with rear-wheel drive, near 50:50 weight distribution and advanced engine technology delivering dynamic performance and superior agility across the range.



## Pricing

Price shown as 'on the road'

116i	£16,335
116i ES	£17,160
116i SE	£18,285
116i M Sport	£19,960

## Company car tax

Car benefit charges for cars with an approved CO2 emissions figure

Model Description	CO2 Taxband	CO2 Emission
116i	15% (18%)	139.0 (152.0)
116i ES	15% (18%)	139.0 (152.0)
116i SE	15% (18%)	139.0 (152.0)
116i M Sport	15% (18%)	139.0 (152.0)

Company car tax information for automatic cars is shown in brackets.



BMW EfficientDynamics delivers impressive emissions reductions and better fuel consumption without sacrificing driving pleasure. This is achieved through a combination of intelligent engine management systems, innovative new technologies and the use of lightweight materials.



### Active Aerodynamics.

Actively controlled air flaps regulate air flow to the engine and braking systems. By opening and closing these flaps, the engine is able to reach its operating temperature quicker, whilst vehicle drag is also reduced – helping the car move through the air more easily and reducing fuel consumption and emissions.



### Auto Start-Stop.

Stops the engine automatically whenever the car comes to rest and is taken out of gear – for example, at traffic lights – and restarts the second the clutch pedal is depressed, saving fuel and reducing emissions.



### Electric Power Steering.

By using an electric motor to assist the steering, not only is the system lighter in weight than conventional hydraulic power steering, thereby reducing fuel consumption and emissions – but assistance can also be varied to aid the driver at lower speeds.

# The BMW 1 Series

## 116i 3-door Sports hatch

BMW UK



### Brake Energy Regeneration.

Intelligent Alternator Control monitors battery condition, engaging the alternator only when the battery requires recharging. This reduces the demands on the engine, reducing fuel consumption and emissions. In addition, when the car's brakes are applied or when coasting downhill, this system automatically engages the alternator to charge the battery, recycling energy that would otherwise be wasted.



### Lightweight Engineering.

The overall weight of the vehicle is reduced through the use of lightweight materials such as thermoplastic, aluminium and magnesium alloy. The results are enhanced driving dynamics and improvements in both fuel economy and weight distribution.



### Optimum Shift Indicator.

A small visual display on the car's instrument cluster shows the optimum gear for any driving situation. This gives drivers the opportunity to adopt a more fuel-efficient driving style.

## Equipment

Engine	116i	116i ES	116i SE	116i M Sport
BMW EfficientDynamics Intelligent Energy Management system - Active Aerodynamics	■	■	■	—
BMW EfficientDynamics Intelligent Energy Management system - Auto Start-Stop (MSA)* *Excluding models with Automatic transmission	■	■	■	■
BMW EfficientDynamics Intelligent Energy Management system - Brake Energy Regeneration (iGR) and Intelligent Alternator Control (IAC)	■	■	■	■
BMW EfficientDynamics Intelligent Energy Management system - Electric Power Steering (EPS) with Servotronic	■	■	■	■
BMW EfficientDynamics Intelligent Energy Management system - Optimum shift indicator (SPA)* *Excluding models with Automatic transmission	■	■	■	■
Catalytic converter	■	■	■	■
Diesel Particulate Filter (DPF)	—	—	—	—
Digital Diesel Electronics (DDE)	—	—	—	—
Digital Motor Electronics (DME)	—	—	—	—
Double-VANOS	■	■	■	■
Four-cylinder in-line diesel engine with common-rail technology	—	—	—	—
Four-cylinder in-line engine with high-precision direct injection with four-valve technology	■	■	■	■
Navigation system - BMW Business	—	—	—	—
Oil level display	■	■	■	■
Oil level sensor with dipstick	—	—	—	—
Six-cylinder in-line engine with four-valve technology	—	—	—	—
Turbocharger with variable turbine geometry	—	—	—	—
VALVETRONIC engine management	—	—	—	—
Variable Twin turbo, two stage engine	—	—	—	—
<b>Transmission</b>				
Automatic transmission	£1,460	£1,460	£1,460	£1,460
Gear lever, short shift	■	■	■	■
Six-speed manual transmission	■	■	■	■

■ Standard    £ Optional cost    — Not Available

# The BMW 1 Series

## 116i 3-door Sports hatch

BMW UK



### Equipment

Wheels and chassis	116i	116i ES	116i SE	116i M Sport
16 inch steel wheel with Aluminium-look covers with 205/55 R16 tyres	—	—	—	—
16" light alloy wheel Double-spoke style 222	£520	£75	■	—
16" light alloy wheel V-spoke style 229	£450	■	£0	—
16" light alloy wheel V-spoke style 255	£520	£75	£0	—
16" steel wheel with Aluminium-look covers	—	—	—	—
16" steel wheel with Aluminium-look covers with 195/55 R16 tyres	—	—	—	—
16" steel wheel with Aluminium-look covers with 205/55 R16 tyres	—	—	—	—
17" light alloy Star-spoke style 256	£835	£395	£320	—
17" light alloy wheel Double-spoke style 207M	—	—	—	■
17" light alloy wheel Star-spoke style 142	£935	£485	£415	—
17" light alloy wheel V-Spoke style 141	£835	£395	£320	—
18" light alloy wheel Double spoke style 208M	—	—	—	£425
18" light alloy wheel V-spoke style 217	£1,315	£865	£795	—
Active steering	—	—	—	—
Aluminium double-joint spring-strut front axle with aluminium strut brace	■	■	■	■
Lightweight five-link rear axle	■	■	■	■
M Sports suspension	£235	£235	£235	■
<b>Safety and technology</b>				
Adaptive headlights	£285	£285	£285	£285
Airbags - driver and passenger front and side	■	■	■	■
Airbags - Head airbags front and rear	■	■	■	■
Alarm system with remote control (Thatcham 1)	■	■	■	■
Anti-lock Braking System (ABS)	■	■	■	■
Automatic Stability Control (ASC + T)	■	■	■	■
Brake drying	—	—	—	—
Brake fade compensation	—	—	—	—
Brake Force Display	■	■	■	■
Brake pre-tensioning	—	—	—	—
Cornering Brake Control (CBC)	■	■	■	■
Crash sensor activating central locking release, hazard warning lights, fuel cut-off and interior lighting	■	■	■	■
Cruise Control	£185	£185	£185	£185
Deformation zones front and rear, door reinforcements and bumpers that regenerate to their original shape in impacts of up to 2.5 mph	■	■	■	■
Disc brakes - front and rear with brake pad sensors	■	■	■	■
Dynamic Brake Control (DBC)	■	■	■	■
Dynamic Stability Control (DSC)	■	■	■	■
Dynamic Stability Control (DSC+)	—	—	—	—
Dynamic Traction Control (DTC)	■	■	■	■
Electronic Brake-force Distribution (EBD)	■	■	■	■

■ Standard    £ Optional cost    — Not Available

# The BMW 1 Series

## 116i 3-door Sports hatch

BMW UK



### Equipment

Safety and technology	116i	116i ES	116i SE	116i M Sport
Electronic immobiliser	■	■	■	■
First Aid kit and warning triangle	■	■	■	■
Foglights, front	£145	£145	■	■
Halogen headlights	■	■	■	■
High level third brake light	■	■	■	■
Impact-Depending Airbag System (ID Airbags), driver and front passenger	■	■	■	■
ITS head airbags - driver, front passenger and rear	■	■	■	■
Lights-on warning	■	■	■	■
Mechanical lock-out for prevention of petrol refuelling in diesel cars	—	—	—	—
On-Board Diagnosis (OBD)	■	■	■	■
Park Distance Control (PDC) front and rear	£520	£520	£210	£210
Park Distance Control (PDC), rear	£310	£310	■	■
Passenger seat occupancy sensor, front	■	■	■	■
Rain sensor with automatic headlight activation	£90	£90	£90	£90
Run-flat tyres with Tyre Puncture Warning System (TPWS)	■	■	■	■
Seat belts - inertia reel with Pyrotechnical belt latch tensioner, belt force limiter and belt retainer	■	■	■	■
Seat belts - three with inertia reel, rear (two when four seat configuration is specified)	■	■	■	■
Side impact protection	■	■	■	■
Visible VIN	■	■	■	■
Windscreen washer jets, heated	—	—	■	■
Windscreen wipers with adjustable intermittent intervals	■	■	■	■
Xenon headlights for low and high beam	£580	£580	£580	£580
<b>Seats</b>				
60:40 split-folding rear seat	■	■	■	■
Child seat ISOFIX attachment, front and rear, with front airbag deactivation	■	■	■	■
Five seats	■	■	■	■
Lumbar support, driver and front passenger	£195	£195	£195	£195
Seat adjustment - front, electric with driver memory	£890	£890	£890	£890
Seat adjustment - front, manual	■	■	■	■
Seat heating, front	£230	£230	£230	£230
Seat height adjustment, front, manual	■	■	■	■
Sports seats, front	£395	£395	£395	■
<b>Sport</b>				
M Aerodynamics package	—	—	—	■
<b>Exterior equipment</b>				
All round anti-corrosion system with partial hot galvanising, phosphate treatment and cathodic dip paintwork, preservation of hollow cavities, underfloor protection	■	■	■	■
Chromeline exterior trim	£110	£110	£110	£0

■ Standard    £ Optional cost    — Not Available

# The BMW 1 Series

## 116i 3-door Sports hatch

BMW UK



### Equipment

Exterior equipment	116i	116i ES	116i SE	116i M Sport
Comfort Access system	£425	£425	£425	£425
Door sill finishers with BMW designation, chrome plated	—	—	—	—
Door sill finishers with M designation, chrome	—	—	—	■
Dynamic package	£1,325	£995	£695	—
Exhaust tailpipe - single, oval	■	■	■	■
Exhaust tailpipe - single, oval, black-chrome	—	—	—	■
Exhaust tailpipe - single, oval, chrome-cover	—	—	—	—
Exhaust tailpipes - twin, round, chrome-covers	—	—	—	—
Exterior mirror package	£170	£170	£170	£170
Exterior mirrors - aspheric, electric adjustment	■	■	■	■
Exterior mirrors, heated	—	—	■	■
Exterior parts in body colour	■	■	■	■
Exterior trim, High-gloss Shadowline	£180	£180	£180	■
Headlight wash	£185	£185	£185	£185
High-beam Assistant	£105	£105	£105	£105
Indicator lenses, clear	■	■	■	■
Kidney grille with black vertical slats	■	■	■	■
Kidney grille, chrome with chrome vertical slats	—	—	—	—
Luggage compartment access via BMW badge on boot panel	■	■	■	■
Model designation, deletion	£0	£0	£0	£0
Rear-view and exterior mirrors, automatically dimming (In conjunction with Comfort package)	£215	£215	■	■
Single oval exhaust in black chrome finish	—	—	—	■
Towbar with removable ball head	£555	£555	£555	£555
Wash wipe system, rear	■	■	■	■
Windscreen washer jets	■	■	■	■
Windscreen with grey shade band	£55	£55	£55	£55
<b>Interior equipment</b>				
Air conditioning, automatic	£1,065	£390	■	■
Air conditioning, manual	£675	■	—	—
Air microfilter	■	■	■	■
Armrest - front with storage compartment	£110	£110	■	■
Battery in luggage compartment with jump start facility in engine bay	■	■	■	■
Central-locking switch	■	■	■	■
Comfort package	£795	£795	£355	£355
Courtesy lights, front and rear with delay and interior night lighting	■	■	■	■
Door sill finishers with BMW designation	■	■	■	—
Electric windows - front, with open/close fingertip control, anti-trap facility and comfort closing function all round.	■	■	■	■
Five Seats, deletion	£0	£0	£0	£0

■ Standard    £ Optional cost    — Not Available

# The BMW 1 Series

## 116i 3-door Sports hatch

BMW UK



### Equipment

Interior equipment	116i	116i ES	116i SE	116i M Sport
Floor mats	■	■	■	■
Glass sunroof with sliding and tilt function, electric adjustment	£675	£675	£675	£675
Graduated tinted windscreen	£55	£55	£55	£55
Handbrake lever and gear lever knob in leather	—	—	—	■
Handbrake lever and gear lever knob in Sensatec	■	■	■	—
Head Restraints, rear and foldable	■	■	■	■
Headlining, Anthracite	£145	£145	£145	■
Individual sun protection glazing	£200	£200	£200	£200
Interior lights package	£180	£180	■	■
Luggage compartment separating net	£85	£85	£85	£85
Luggage compartment strap for small items	■	■	■	■
Modular Ski Bag	£125	£125	£125	£125
Oil level indicator in instrument panel	■	■	■	■
Rear-view and exterior mirrors, automatically dimming	£330	£330	£215	£215
Rear-view mirror automatically dimming	£120	£120	■	■
Smoker's package	■	■	■	■
Smoker's package, deletion	£0	£0	£0	£0
Start/Stop button	■	■	■	■
Steering wheel heating	£130	£130	£130	—
Storage compartments in door panels, front and rear	■	■	■	■
Storage package	£90	£90	£90	£90
Sun visors with vanity mirrors and ticket pocket	■	■	■	■
Toolkit located in luggage compartment	■	■	■	■
Two lashing eyes in luggage compartment	■	■	■	■
<b>Steering wheels</b>				
Multi-function controls for steering wheel (Only available in conjunction with three-spoke sports leather steering wheel)	£110	£110	■	■
Steering column with manual reach and rake adjustment	■	■	■	■
Three-spoke multi-function M leather steering wheel	—	—	—	■
Three-spoke multi-function Sports leather steering wheel	—	—	■	—
Three-spoke Sports leather steering wheel	£200	£200	—	—
Three-spoke steering wheel	■	■	—	—
<b>Audio and communications</b>				
Auxiliary input point for auxiliary playing devices (eg MP3 player)	■	■	■	■
Bluetooth telephone audio connection	£70	£70	£70	£70
Bluetooth telephone preparation	£535	£535	£535	£535
Bluetooth telephone preparation with telematics	£535	£535	£535	£535
BMW Business radio with single CD player	■	■	■	■
BMW ConnectedDrive - Assist (only available with Navigation system - Professional and Bluetooth telephone preparation with telematics)	£0	£0	£0	£0

■ Standard    £ Optional cost    — Not Available

# The BMW 1 Series 116i 3-door Sports hatch

BMW UK



## Equipment

Audio and communications	116i	116i ES	116i SE	116i M Sport
BMW ConnectedDrive - Online	■	■	£0	£0
BMW ConnectedDrive - Online (only available with BMW ConnectedDrive - Assist and Bluetooth telephone preparation with telematics)	£0	£0	£0	£0
BMW ConnectedDrive - Online extended	—	—	£0	£0
BMW Professional radio with single CD player	£145	£145	£145	£145
CD changer for six CDs	£295	£295	£295	£295
Hi-Fi loudspeaker system	£370	£370	£370	£370
Hi-Fi loudspeaker system - LOGIC7 Professional	£710	£710	£710	£710
Loudspeaker system with six speakers	■	■	■	■
Navigation system - Business	—	—	£1,460	£1,460
Navigation system - Professional	—	—	£1,970	£1,970
On-board computer including the following functionality: External temperature display, average fuel consumption, fuel range, average speed and current consumption	■	■	■	■
Preparation for six CD changer	£35	£35	£35	£35
USB audio interface	—	—	—	—
USB interface	£205	£205	£205	£205
Voice control (Standard in conjunction with Navigation systems.)	—	—	£285	£285
<b>Paintwork, upholstery and trims</b>				
Flashpoint cloth/Sensatec upholstery	—	—	—	■
Interior trim - Aluminium Glacier Silver	—	—	—	■
Interior trim - Black, high gloss	£50	£50	£50	—
Interior trim - Brushed Aluminium with accent line	£215	£215	£215	£0
Interior trim - Cashmere silver	£50	£50	£50	—
Interior trim - Dark Grey Poplar wood	£285	£285	£285	£75
Interior trim - Light Burr Walnut wood	£285	£285	£285	£75
Interior Trim - Satin Silver	£50	£50	£50	—
Interior trim - Silver	■	■	■	—
Interior Trim - Titanium light	—	—	—	—
Metallic paintwork	£450	£450	£450	£450
Non-metallic paintwork	■	■	■	■
Satin Silver matt interior trim	—	—	—	—
Upholstery - Boston leather	£1,090	£1,090	£990	£990
Upholstery - Elektra cloth	■	■	■	—
Upholstery - Network cloth (Standard in conjunction with Dynamic package.)	£100	£100	£100	—
Upholstery - Pearlpoint cloth/leather	£370	£370	£370	—
<b>Options available from your dealer</b>				

■ Standard    £ Optional cost    — Not Available



# The BMW 1 Series 116i 3-door Sports hatch

BMW UK



## Equipment

Options available from your dealer	116i	116i ES	116i SE	116i M Sport
BMW Service Inclusive - BMW Service and Maintenance for 5 years/60,000 miles (terms and conditions apply)	£1,455	£1,455	£1,455	£1,455
BMW Service Inclusive - BMW Service for 5 years/60,000 miles (terms and conditions apply)	£635	£635	£635	£635
BMW Trackstar	£219	£219	£219	£219
BMW Trackstar 5	£449	£449	£449	£449

■ Standard    £ Optional cost    – Not Available

## Technical Specification 116i 3-door

**Note** - Figures in brackets represent Automatic transmission

### Engine

Cylinders/valves 4/16  
Capacity (cc) 1599  
Stroke/Bore (mm) 75.6/82  
Max output (kW/hp/rpm) 90/122/6000  
Max torque (Nm/rpm) 160/4250

### Wheels

Tyre size front 195/55 R16  
Tyre size rear 195/55 R16  
Wheel size front 6.5J x 16 St  
Wheel size rear 6.5J x 16 St

### Fuel consumption

Urban (mpg) 37.7 (34.0)  
Extra-urban (mpg) 58.9 (53.3)  
Combined (mpg) 48.7 (44.1)  
Urban (ltr/100km) 7.5 (8.3)  
Extra-urban (ltr/100km) 4.8 (5.3)  
Combined (ltr/100km) 5.8 (6.4)  
CO2 emissions (g/km) 139 (152)  
Tank capacity (ltr) 53

### Dimensions

Wheelbase 2660  
Vehicle length 4329  
Vehicle width 1748  
Vehicle height 1421  
Track, front 1484  
Track, rear 1497

### Performance

Drag (cD) 0.29  
Top speed (mph) 127 (126)  
Acceleration 0-62 mph (sec) 10.1 (11.1)  
Acceleration 50-75 mph in 4th (sec) 9.9

### Weight

Unladen (EU) 1330 (1355)  
Max permissible 1755 (1780)  
Permitted load 500  
Permitted axle load, front/rear 855/1020

## Accessories - Introduction



The BMW 1 Series. Nothing comes close to touching this masterpiece. Push the start button and you're poised for a new driving experience. The only car of its size to boast the combination of rear-wheel drive and a longitudinally mounted engine, along with everything they stand for: superb agility and solid stability. And then there's the power. The sheer energy of a BMW engine, efficient and so smooth it purrs. You expected a lot from the BMW 1 Series and that's what you've got. But there's more. This brochure shows a range of Genuine BMW Accessories for the BMW 1 Series that are every bit as well made and stylish. Add individuality to your choice of car.

## Accessories - Exterior styling



Mudflaps



Locking wheel bolts - McGard Design

# The BMW 1 Series 116i 3-door Sports hatch

BMW UK



## Accessories - Exterior styling



### Locking wheel bolts

These bolts have a special inner toothing which can only be undone with the special tool provided.



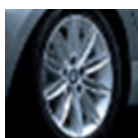
### Tail Pipe in chrome

The distinctive look of this exhaust pipe cover accentuates the dynamic lines of the BMW 1 Series.



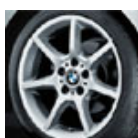
### Carbon aerodynamic additions

For vehicles equipped with M-aerodynamic kit.



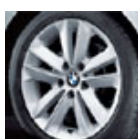
### 18" M Double spoke styling 207

Front: 7" x 17"  
Rear: 7.5" x 17"



### 18" Star spoke styling 180

205/45 R18W front  
225/40 R18W rear



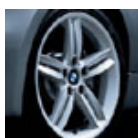
### 17" V spoke styling 14

205/50R17 89V



### 16" Spider spoke styling 140

205/55/R16 91V



### 18" M Double spoke styling 208

Front: 7.5" x 18"  
Rear: 8" x 18"



### Sport exhaust system

Increases the powerful sound of your BMW 1 Series providing an even sportier sound. With mirror finish stainless steel tail pipes.  
\* Not for diesel.



### The M Aerodynamic Package

Developed to enhance the sporting character and appearance of your 1 Series. The package consists of Bumper trims, front and rear and Side skirt trims, left and right.



### Dark line rear lamps



### 18" Star spoke composite styling 179

205/45 R18W front  
225/40 R18W rear



### 18" Double spoke styling 182

205/45 R18W front  
225/40 R18W rear



### 17" Spider spoke styling 142

Front: 205/50R17 89W  
Rear: 225/45R17 91W



### Aerodynamic package.

Painted aerodynamic package consisting of front apron, rear apron and roof spoiler.



### 16" Spider spoke styling 139

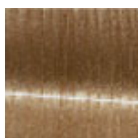
195/55R 16 91V

## Accessories - Interior styling



### CD/DVD holder

For easy attachment to the sun visor. Holds up to ten CDs or DVDs.



### Interior trim in Alpine Ash

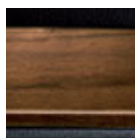
Adds a high quality blend of sportiness and luxury



### Leather covered sport steering wheel

Decorative trim strips\* match the interior trim perfectly and are available in wood, chrome, carbon and titanium. Available with or without multi-function.

\*Decorative trim strips for the steering wheel inserts need to be ordered separately.



### Interior trim in Walnut

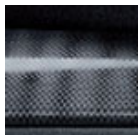
Adds a high quality blend of sportiness and luxury

## Accessories - Interior styling



### Interior trim in Glacier Silver Aluminium

Adds a high quality blend of sportiness and luxury



### Interior trim in Gomera Black

Adds a high quality blend of sportiness and luxury



### Leather covered gear knob

With a Chrome inlay.



### City floor mats

In four parts, they are dirtrepellent and water-resistant.



### Illuminated door entry strips

The decorative feature set into these aluminium strips has a chrome appearance in daylight. When the light fades this is subtly illuminated.



### Seat belt holder

Facilitates easy access to the belt from any seat height and position.



### Aluminium sports pedals

Only available for vehicles with automatic transmission.



### Interior trim in Kodiak Silver Aluminium

Adds a high quality blend of sportiness and luxury



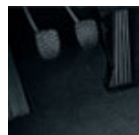
### Interior trim in high-gloss black

Adds a high quality blend of sportiness and luxury.



### Rubber floor mat with textile insert

Two part – dirt-repellent and water-resistant.



### Velour floor mats

In four parts, they are dirtrepellent and water-resistant.



### Rear and side sun blinds

The sun blinds can be quickly and easily attached to the rear window and to the side windows. When they are not needed, they can be stowed away in the pouch provided to save space.

### Automatic climate control

Ensures that the preferred in-car climate is reached as quickly as possible, maintaining a preselected temperature which can be set in 0.5°C increments. (Image not shown)

# The BMW 1 Series 116i 3-door Sports hatch

BMW UK



## Accessories - Mobile communications



### Garmin® nüvi® 205WT

- Full turn-by-turn prompts with voice guidance, unit will prompt you to "Turn right in 500 feet".
  - Pre-loaded with regional mapping (UK and Ireland).
  - 2 year warranty .
  - Easy-to-use, 4.3" touchscreen display .
  - Full UK postal code search . Vehicle suction cup mount .
  - Detailed 3D or 2D birds-eye view mapping.
  - GTM 25 integrated FM TMC traffic receiver with free lifetime subscription which notifies you of traffic and automatically suggests alternative routes\* .
  - Includes Garmin Lock™ anti-theft feature.
  - Configurable car icons.
  - Built-in lithium-ion battery: lasts up to four hours depending on usage.
  - Safety camera alerts enabled by Cyclops™ data (30 days free trial subscription to download updates).
  - Sleek, ultra-slim design fits easily in pocket.
  - Auto re-route (fast off-route and detour recalculation).
  - Custom POI's (ability to add additional points of interest).
  - Photo navigation (navigate to geotagged photos).
- 
- High-sensitivity GPS receiver for improved performance and reception.
  - Trip computer records mileage, max speed, total time and more.
  - Built-in travel kit includes features such as picture viewer, world clock, currency and measurement converters and calculator.
  - SD memory card expansion slot. Weight: 173g



### Interface for Apple iPod

The iPod interface allows the Apple iPod, iPod mini and iPod Photo to be connected to your vehicles audio system. By selecting genres, artists, albums and playlists using the multi-functional steering wheel it is now possible to access your entire music collection at any time in your car.

The music stored on the iPod is played by the audio system and the iPod is also charged at the same time. To ensure that you do not lose control of this volume of music, the display integrated in of this volume of music, the display integrated in the dashboard shows the current track or your position in the selection menu. When iPod connector is fitted, CD changer function is disabled and can no longer be used.



### CD changer

For six CDs it is fitted in the luggage compartment to save space.



### Bluetooth hands-free kit

Suitable for a variety of brands of mobile phone. By using a phone-specific and easily interchangeable snap-in adaptor, calls can be made via the hands-free kit whilst charging the phone at the same time. The kit is operated by the following integrated devices: voice control, the on-board monitor or the multi-function steering wheel depending on the vehicle's specification. Snap-in adaptors are available separately.



### Snap-in adaptors for vehicles equipped with Bluetooth

By using a phone-specific and easily interchangeable snap-in adapter, every driver can make calls on their mobile phone via the hands-free kit and simultaneously charge their phone.



### Universal hands-free kit

Snap-in adaptors have been developed specifically for use with the Universal hands-free kits. For full details of the snap-in adaptors available please speak to your BMW Dealer.



### Split screen software

Screen is divided up for parallel display of several pieces of information (e.g. simultaneously viewing on-board computer data and route guidance programme).



### BMW navigation kit

## Accessories - Mobile communications

### Digital roadmap update discs for your integrated Navigation systems

Using the digital road maps, the computer can quickly work out the best route. DVDs containing updated information are released twice a year and contain RDS-TMC traffic information, directory of BMW Dealers and Falk travel guide with new points of interest.

Each release includes up to 15% of changes to the road network each year.  
(Image not shown)



### Garmin® nüvi® 670T Travel Pack

- Full turn-by-turn guidance with voice prompts
- Pre-loaded transatlantic mapping for Europe and North America (including Canada)
- Full UK postal code search
- FM transmitter for voice guidance and stored MP3 audio via your car radio/speakers\*\*\*
- Text-to-speech announcements: prompts you to turn right in 500ft into Main Street, instead of turn right in 500ft\*
- Widescreen 4.3" touch screen display
- Detailed 3D or 2D birds-eye view mapping
- Bluetooth wireless technology for hands-free calling
- GTM 21 integrated FM TMC traffic receiver with 12-volt adapter and free lifetime subscription which notifies you of traffic and automatically suggests alternative routes\*\*
- Garmin Lock™, an anti-theft feature
- Configurable car icons
- Rechargeable li-ion battery (3-7 hours)
- Safety camera alerts enabled by Cyclops™ data (3 month free trial subscription to download updates)
- Detailed points-of-interest (POI)
- Upload custom POIs
- Detailed street level guidance
- MP3 & audio book player
- World clock
- Calculator
- Currency & measurement converter
- Picture viewer (jpeg format)
- Language translator (optional)
- Vehicle suction cup mount
- 12-24 volt adapter cable
- SD memory card expansion slot
- AC charger
- Carry case
- PC/USB interface cable
- Headphone jack/audio line out
- Owner's manual
- Quick reference guide
- Size: 12.4W x 7.4H x 2.3D cm
- Weight: 190 g

#### Additional Features†††

- Travel guide – included on supplied SD card with helpful and thorough reviews and recommendations for restaurants, hotels, shopping, nightlife, sporting events and tourist attractions for major European countries\*

## Accessories - Versatility



### Coolbag

CFC-free, electric cooler which cools its contents. Capacity: 12 litres.

### Multifix system for luggage compartment

Special brackets with a non-slip finish. (Image not shown)

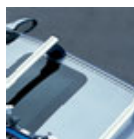


### Luggage Compartment Box, Folding



### Umbrella bag

With matching BMW umbrella. Installed in the front passenger footwell for ease of use.



### Roof bars.

### Dog guard

Black anodised grill partition, easily removed if required. (Image not shown)



### Halogen reading light

Anti-dazzle light for map reading. The light beam can be pointed in any direction thanks to the flexible arm.



### Towing hitch

Only suitable for trailer loads of up to the maximum permissible weight. This information is set out in the vehicle's Owner Handbook.

# The BMW 1 Series 116i 3-door Sports hatch

BMW UK



## Accessories - Versatility



### Cupholder module

When opened, this module can hold two drinks securely and offers two extra small storage options.



### Protective rear cover

A separate cover made from high-quality textile fibres that can be attached by fitting over the front and rear headrests. Waterproof, dirt-repellent and washable.

\*5 door only, 3 door version is in development.



### Luggage compartment fitted mat

Fitted non-slip luggage mat made from heavy duty plastic. Resistant to oil and solvents to protect the cars interior.



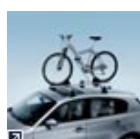
### Luggage compartment tray

Shatter-proof, acid proof and impact resistant. The tray completely covers the luggage compartment floor.



### Luggage compartment tensioning straps

Two tear-resistant nylon straps to secure items in the luggage compartment easily, quickly and safely to existing eyelets.



### Touring cycle holder, lockable.

Sturdy attachment for transporting a bicycle with frame tube diameter of up to 80mm. Also suitable for mountain bikes. Single locking set for fitting up to four touring cycle holders on the base support system.



### Universal holder

Provides secure support even for large, bulky items and consists of four infinitely adjustable holders, two tensioning straps and four belt eyelets.



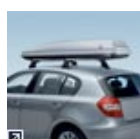
### Snowboard holder, lockable

For up to two snowboards.



### Ski holder

The standard ski holder can carry up to six pairs of skis.



### BMW roof boxes

With anti-theft five-part lock. Available in silver or black in two sizes (320 and 450 litres).



### Stowaway module

Offers two compartments one on top of the other, which open when pressed gently - for storage of smaller sized items.



### Cool bag

CFC-free electric cooler which cools its contents to approximately 20 degrees centigrade, below the temperature inside the car. Capacity: 12 litres.



### Luggage compartment anti-slip mat

Non-slip, precision-fit mat made of durable plastics that's oil- and solvent-resistant.



### Luggage compartment floor net

Secures objects of various sizes, quickly and safely, to existing eyelets.



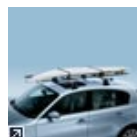
### Racing cycle holder.

Suitable for racing cycles with quick release skewers on the front wheel. A holder for securing the front wheel to the base support system is also available.



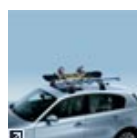
### Luggage rack

High load-carrying capacity. Corrosion-resistant tubular steel construction. Available in two sizes. The small luggage rack (not shown) allows you to combine other attachments from the multifunctional BMW roof rack system.



### Surfboard carrier

With supports of impact-resistant plastic, an integral mast carrier, strap eyelets and tensioning straps. An anti-theft kit for both surfboard and mast is also available.



### Ski and snowboard set

A Ski holder can also be fitted as well as a snowboard holder.



### BMW luggage boxes

Available in various sizes and colours. The BMW ski and luggage box can carry up to five pairs of skis including accessories or more extensive luggage.

Capacity: 450 litres approx.  
L x W x H: 228 x 81 x 31cm.

The BMW luggage box is a shorter but wider and higher version of the ski and luggage box.

Capacity: 475 litres approx.  
L x W x H: 132 x 103 x 41cm.



### Coat hanger

Attaches easily and securely to the head restraint.

# The BMW 1 Series 116i 3-door Sports hatch

BMW UK



## Accessories - Safety and security



### BMW Approved Stolen Vehicle Recovery products

Car thieves are becoming more sophisticated. Fortunately for you, so is BMW's additional security. BMW is a company of constant innovation. This on-going programme includes the advancement of anti-theft devices for your vehicle. If your vehicle already has security equipment, it is likely that BMW's additional security can enhance the factory-fitted system you presently rely on. This includes the availability of the ultimate BMW Approved, stolen vehicle recovery systems, which are now able to locate vehicles in Europe\* as well as mainland Great Britain. Once installed by BMW factory trained technicians, the products may entitle you to a reduction in your vehicle insurance premiums.

\*Please contact your BMW Dealer for further details.



### Reversing camera

For reversing safely. On selecting reverse, the area behind the car is filmed via a 131° wide-angle lens of a camera in the boot lid. Images are then displayed on the on-board monitor. For vehicles without an on-board monitor, a display monitor can be fitted in place of an air vent as shown above.



### Outdoor car cover

This breathable and washable car cover is easy to handle. Heat reflective and completely waterproof, it has a silver-coloured, dirt-repellent surface with a BMW logo.

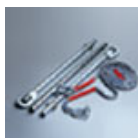


### Dog harness

Dogs fitted with this harness are safely restrained by the three-point seat belt, even in the event of sharp braking. Available in three sizes.



### Warning triangle with holder



### Tow-cable



### First aid pouch

### TRACKER Response

This system is the leading tracking product in the UK. Driver Validation tags are used to confirm authorised vehicle movement. This means that in the unlucky event of the thief stealing the vehicle keys, TRACKER Response will monitor the vehicle movements. Once moved without the use of Driver Validation tags, the system will contact the TRACKER control room. Vehicle key theft is a rapidly growing crime and this feature will enable faster access to your vehicle's position. System features an innovative customer website so that your vehicles location can be identified day or night. (Image not shown)



### Headlamp washers

Clean headlamps make sure that the road is perfectly lit at all times.



### Front and rear Park Distance Control

Makes parking easier. Obstacles up to 1.5m away are detected and an acoustic warning is given. Available individually or as a complete package. Please ask your BMW Dealer for further information.

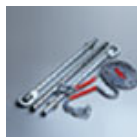


### Rechargeable torch

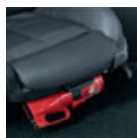
This small torch with a magnifying lens has a rechargeable battery and can be connected to the cigarette lighter socket for recharging.



### Jump leads in Genuine BMW pouch with protective circuit



### Tow-bar



### Powder-type fire extinguisher

Located under the driver's seat for easy access.



### Warning jackets

Neon-colour safety jackets.

### TRACKER Horizon

This system includes TRACKER Monitor with GPS/GSM technology. Combined with TRACKER Monitor technology this system allows the TRACKER Network Control Room to track your vehicle with GPS/GSM on a computer-based road map. This allows the Control Room to communicate this information to the police. In conjunction with the on-board homing device, the police are able to ensure a safer and faster recovery of your vehicle, thus reducing the damage risk to your vehicle. (Image not shown)

# The BMW 1 Series 116i 3-door Sports hatch

BMW UK



## Accessories - Safety and security

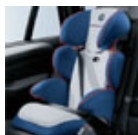
### TRACKER Monitor

TRACKER Monitor is a small electronic homing device hidden in your vehicle. It has no tell-tale antennae or aerials to give its presence away and is also intelligent enough to detect the possible illegal movement of your vehicle. Therefore, either when you report a theft or the TRACKER Network Control Room contact you to advise you of a possible illegal movement, the unit is activated via a network of radio transmitters. Once activated, the unit emits a silent signal which allows computers fitted in Police cars and helicopters to track your vehicle - and anyone driving it - down to their exact location. (Image not shown)



### Junior Seat I-II

The BMW Junior Seat I-II with height and tilt adjustable backrest and restraint cushion is an ideal solution for children between 9 months and 7 years (9 to 25 kg body weight). The restraint cushion offers ideal protection to children from 9 months up to approx. 4 years: It reduces the impact of the forces acting on the cervical spine in the event of an accident. For children with a body weight in excess of 18 kg or approx. 3.5 years, the restraint cushion is no longer used. Your child is then secured in using the vehicle seat belt.



### Junior Seat II-III

The BMW Junior Seat II - III has a size scale for up to 150 cm which allows optimum setting of the headrest and upper belt guide. With side, height and seat back adjustments the Junior seat II-III has been designed with optimum safety and comfort in mind.

ISOFIX preparation may only legally be used for children up to 18 kg. Accordingly, the BMW Junior Seat II-III is not available with the ISOFIX option. The seat is secured by the vehicle's own three-point seat belt with belt guides for simple mounting.



### Baby Seat 0+

The ideal seat for the smallest of children weighing up to 13-kg (approx. 18 months). The system consists of a frame installed in the vehicle and a portable baby shell.

The BMW Baby Seat 0+ is fitted in the opposite direction of travel. This significantly reduces the pressure exerted on the child's cervical spine in the event of a frontal collision. With the optionally available seat size reducer, the BMW Baby Seat 0+ can be ergonomically adapted to fit newborns.



### Junior Seat II

The BMW Junior Seat II is offered without restraint cushion for children over 15 kg and approx. 3.5 years.

The ISOFIX preparation may only legally be used for children up to 18 kg. Accordingly, the BMW Junior Seat II is not available with the ISOFIX option.

## Accessories - Car care



### BMW Seal & Protect

BMW Seal & Protect is the only fully approved BMW paint, interior carpet /cloth upholstery protection system. It provides an outstanding long-lasting shield against the environment and safeguards your investment by preserving the high quality finish of your car's surfaces.

Utilising high-performance sealants, your purchase involves a Dealership-applied BMW Hard Wax to the exterior paintwork. As a result, exterior surface resilience and water repellence is increased by over 300%. And the long-standing protection that BMW Seal & Protect provides simultaneously has a regenerating effect on the paintwork, for a lasting shine.

The same scientific detail is also applied inside your car, with an impregnating agent for carpets and cloth upholstery to ensure that treated materials do not soak through when exposed to moisture.

Please speak to your BMW Dealer for further details.



### Wheel rim cleaner, 500ml

For Genuine BMW alloy and steel wheels.

### Engine and cold-cleaner, 500ml

Rapid cleaner for heavily soiled engines and machine parts. Will not attack paintwork, rubber or plastics. (Image not shown)

### Insect sponge

.

### Cleaning brush for alloy wheels

For cleaning BMW alloy wheels thoroughly. Comes with three different attachments. (Image not shown)

### Interior cleaner, 250ml

For cleaning all materials in the interior. (Image not shown)



## Accessories - Car care

### Special sprays

A large selection is available from your BMW Dealer. (Image not available)

### Door lock de-icer, 50ml

Thaws out frozen door locks. (Image not shown)

### Engine protector, 300ml

Protects the engine against moisture and dirt. (Image not shown)

### Insect remover, 500ml

Effortlessly removes insects from glass, paintwork, chrome and plastics. (Image not shown)

### Window cleaner with anti-misting additive. 500ml

Removes traces of ingrained dirt, silicone and oil. (Image not shown)

### Intensive window cleaner

Specially formulated concentrated cleaner for cars with additional windscreen washer system. (Image not shown)

### Tar remover, 300ml

The easy way to remove tar, asphalt and oil stains. (Image not shown)

### Silicone remover concentrate, 250ml

Removes stubborn dirt such as silicone, oil and grease. (Image not shown)

### Plastic care liquid, 200ml

Intensive care product with silicone for all plastic parts, such as the door trims, instrument panel trim and bumpers. It cuts down static and gives a silk matt finish. (Image not shown)

### Cockpit spray, 300ml

(Image not shown)

### Transparent wax, 300ml

Protects painted and unpainted surfaces against corrosion. (Image not shown)



### BMW Genuine HydroColorSystems

If you require a touch-up stick or spray can, please contact your local BMW Dealer for details.

### Car polish, 500ml

Solvent-free cleansing and care liquid for matt, multi-coloured and metallic paintwork. It contains high-quality, hard waxes which protect the paintwork. (Image not shown)

### Window de-icer, 500ml

Clears windows of ice and prevents them from freezing over again. (Image not shown)

### Windscreen cleaner with antifreeze

Prevents the water in the windscreen washer system from freezing. (Image not shown)

### Ice scraper

With three different edges for ice, frost and dew. (Image not shown)

### Castrol top-up pack

(Image not shown)

### Window cleaner with anti-misting additive. Spray can, 300ml

Removes traces of ingrained dirt, silicone and oil. (Image not shown)

### Windscreen cleaner for summer use

For windscreen washer systems. (Image not shown)

### Concentrated cleaner for windscreen washer, 25ml

For windscreen washer systems. (Image not shown)

### Stain remover, 1000ml

Removes tar and oil grease stains from seat covers, leather and plastic parts. (Image not shown)

### Silicone spray, 300ml

A colourless universal lubricant that can be used on hinges, etc. Also cleans and cares for rubber and plastic parts. (Image not shown)

### Leather care agent, 250ml

Protects the leather after general cleaning. (Image not shown)

### Chrome polishing paste, 100g

Gives an intense sheen, leaving a silicone film to protect against the effects of weather, corrosion, etc. (Image not shown)

### Wash & Wax, 500ml

Just add to the washing water to clean and protect in one. (Image not shown)

### Car wax, 500ml

Gives all new and clean multi-coloured or metallic paintwork a longlasting high gloss finish without smearing.

### Car shampoo, 1000ml

Gloss shampoo which also protects the paintwork. (Image not shown)

## The BMW 1 Series 116i 3-door Sports hatch

BMW UK



BMW (UK) Limited reserves the right to alter prices and specifications without notice. BMW (UK) Limited has made every effort to ensure the accuracy of information but does not accept liability for any errors or omissions.

Prices and specification shown are effective from July 2008.