

# Genuine accessories for the SL-Class



Mercedes-Benz

# Contents

004 Quality & Safety

006 Exterior

Light-alloy wheels  
Wheel accessories

014 Telematics

Telephony  
Navigation

020 Interior

Interior appointments  
Child safety

026 Cargo & Care

Boot accessories

030 AMG

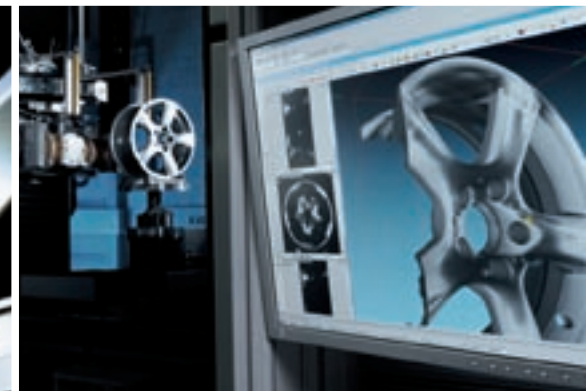
Light-alloy wheels  
Bodystyling  
Interior

034 Index









## I. Design & Development

Mercedes-Benz genuine accessories make your dream car a reality - while ensuring that it remains a Mercedes-Benz through and through:

- ▶ Individualisation options are developed in accordance with the Mercedes-Benz car design philosophy
- ▶ The use of CAD data from Mercedes-Benz Vehicle Development ensures precision-fit accessories

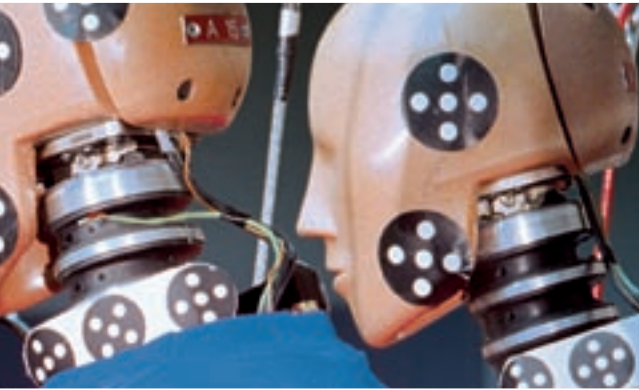
## II. Quality & Safety

When it comes to Mercedes-Benz vehicles, quality and safety are paramount. You can feel equally safe with Mercedes-Benz genuine accessories as a result of:

- ▶ Stringent safety measures and extensive load testing, including the use of crash test facilities and the wind tunnel
- ▶ Harmonised development of both vehicle and Mercedes-Benz genuine accessories
- ▶ The highest of standards, far in excess of those prescribed by law

# Mercedes through and through

When you drive a Mercedes-Benz, you do so for the best of reasons. Why should your choice of accessories be governed by different standards? Pioneering when it comes to design and technology, Mercedes-Benz genuine accessories deliver on the promises of a major brand.



## III. Function & Operation

Mercedes-Benz genuine accessories form part of the vehicle concept from the outset. This results in impressive functional solutions:

- ▶ Fully integrated telematics products can be operated safely and conveniently using the multifunction steering wheel
- ▶ Roof-mounted carrier systems can be fitted quickly and without the use of additional tools
- ▶ Instructions and manuals are in standard format and easy to understand

## IV. Advice & Fitting

No one is as familiar with the ins and outs of your vehicle as our employees. And the same goes for Mercedes-Benz genuine accessories:

- ▶ Contact your Mercedes-Benz Service and Sales partners for expert advice
- ▶ Trust our trained specialists when it comes to fitting Mercedes-Benz genuine accessories





01



# Exterior

Light-alloy wheels  
Wheel accessories

01 **incenio** 48.3 cm (19-inch)  
multi-spoke wheel



# Class distinction

Light-alloy wheels from Mercedes-Benz don't just set your SL in motion – they are optimally tailored to your vehicle and meet the highest of quality and safety standards.

**incenio** light-alloy wheels enhance the ride comfort and dynamism of your sports car and significantly contribute to the appeal of the SL's design. Meeting our high demands. And yours.

## 01 **incenio** 5-spoke wheel

Finish: satin silver matt

Wheel: 8.5J x 18 ET 35.5 | Tyre: 255/40 R18  
A231 401 2902 7X34

Option for rear axle:

Wheel: 9.5J x 18 ET 47.5 | Tyre: 285/35 R18  
A231 401 3002 7X34

## 02 **incenio** multi-spoke wheel

Finish: palladium silver

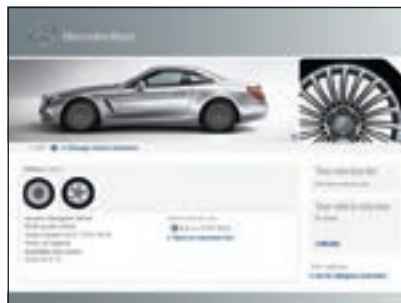
Wheel: 8.5J x 19 ET 35.5 | Tyre: 255/35 R19  
A231 401 2702 7X19

Option for rear axle:

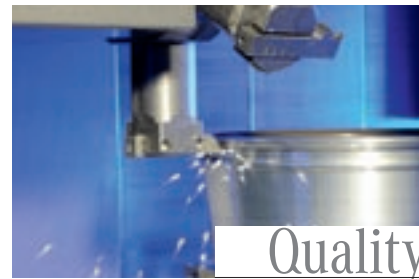
Wheel: 9.5J x 19 ET 47.5 | Tyre: 285/30 R19  
A231 401 2802 7X19







**Choose your favourite wheels online**  
Our Accessories Configurator shows you at a click of the mouse how the various Mercedes-Benz light-alloy wheels will look on your vehicle. Visit our website at [www.mercedes-benz-accessories.com](http://www.mercedes-benz-accessories.com)



### **The long road to perfection**

*Mercedes-Benz light-alloy wheels not only boost your vehicle's looks, they also offer the ultimate in safety.*

*All wheels are precision-tailored to your vehicle in terms of load profile and dimensions. Before your light-alloy wheels are allowed to accompany you safely on your travels, they are subjected to an extensive development and testing programme. Each wheel design has to pass a variety of endurance tests, based on exacting Mercedes-Benz guidelines which exceed all statutory requirements. These include special test routines which simulate real challenges on the road and material tests in cutting-edge x-ray facilities.*

*High-sheen wheels undergo additional tests such as exposure to highly corrosive salt spray or a 28-day variable climate programme. Only once all of the tests have been passed may the wheels be included in the range of genuine Mercedes-Benz light-alloy wheels. Add an individual touch to your vehicle with a tested and approved genuine Mercedes-Benz light-alloy wheel and head for the open road*

# Exterior

**incenio**  
light-alloy wheels



#### 01 5-twin-spoke wheel

Finish: vanadium silver metallic

Wheel: 8.5J x 19 ET 35.5

Tyre: 255/35 R19

A231 401 1202 7X45

Option for rear axle:

Wheel: 9.5J x 19 ET 47.5

Tyre: 285/30 R19

A231 401 1302 7X45

01 | 48.3 cm | 19"

*Because of differences in national regulations, various different versions of each vehicle exist. Please also bear in mind that vehicle development is permanently ongoing. As a result, not all of the wheel/tyre combinations shown in this brochure will be approved for your particular Mercedes-Benz. Your Mercedes-Benz dealer has access to constantly updated information on every Mercedes-Benz wheel, including the relevant technical inspection findings and licensing conditions, and will be happy to advise you. Mercedes-Benz light-alloy wheels are supplied without tyres, hub caps, valve caps or wheel bolts. To help prevent theft, we recommend the use of Mercedes-Benz rim locks*



02 | 45.7 cm | 18"

# Exterior

Mercedes-Benz  
light-alloy wheels

## 02 15-spoke wheel

Finish: vanadium silver metallic

Wheel: 8.5J x 18 ET 35.5

Tyre: 255/40 R18

A231 401 0602 7X45

Option for rear axle:

Wheel: 9.5J x 18 ET 47.5

Tyre: 285/35 R18

A231 401 0702 7X45

## 03 5-twin-spoke wheel

Finish: vanadium silver metallic

Wheel: 8.5J x 18 ET 35.5

Tyre: 255/40 R18

A231 401 1002 7X45

Option for rear axle:

Wheel: 9.5J x 18 ET 47.5

Tyre: 285/35 R18

A231 401 1102 7X45

## 04 10-spoke wheel

Finish: titanium silver

Wheel: 8J x 17 ET 30

Tyre: 255/45 R17

A231 401 2402 9765







#### 01 Valve caps, black

Stylish highlights in a new design. Protect the valves from dirt. Set of 4

#### 02 Tyre pressure gauge

Allows you to carry out a quick tyre pressure check on the road or at home. Keeping tyres at the optimum pressure saves fuel and reduces tyre wear. Suitable for all motor vehicle tyre valves and for cycle valves. Supplied with leather pouch

#### 03 Rim locks

Protect your valuable light-alloy wheels from theft – set consisting of coded key and one lock per wheel

#### 04 Snow chain systems

High-performance chain for the toughest of conditions and excellent traction on snow and ice. A robust plastic ring prevents your valuable light-alloy wheels from being scratched by individual chain links. Easy to fit – fastens on outside



02



01



03



04

## Hub caps

Protect the hub from dirt.

Available in the following versions:

- 05 sterling silver with chrome star
- 06 titanium silver with chrome star
- 07 himalayas grey
- 08 classic Roadster design in blue
- 09 classic Roadster design in black
- 10 black with chrome star



# Exterior

Wheel accessories



13:45

Heilbronn

Stuttgart

Sindelfingen

Pforzheim

Heidelberg

Weim

10km

50m

5km

RADIO

DISC

GINE



# Telematics

Telephony  
Navigation



01 COMAND Online

# Born to lead

Your SL is a pioneering vehicle. And the comprehensive telematics solutions from the Mercedes-Benz genuine accessories range add to its appeal. Sit back and use your phone, surf the web or allow your navigation unit to show you the best route – and savour the comfort and convenience.

Experience a new dimension of web access, telephony and navigation support in your SL – with the combination of the Mercedes-Benz Bluetooth® (SAP\*) telephone module and the COMAND Online multimedia system. The telephone module with integrated UMTS module and a direct connection to the vehicle aerial ensures that COMAND Online has a fast, stable and reliable internet connection. You can use the phone and simultaneously use Mercedes-Benz apps via COMAND Online and have the system read SMS messages to you

Details about COMAND Online can be found on page 18



### 01 Mercedes-Benz Bluetooth® (SAP\*) telephone module

The telephone module is designed to extend the mobile communication system in your Mercedes-Benz. Just connect it to your Convenience Telephony system (Code 386) in the centre armrest, and start using your mobile via the on-board hands-free system. Connection to the COMAND Online display makes operating your phone easy

Other advantages:

- Optimised reception of voice and data signals as a result of using vehicle's external aerial
- Use as data modem and SIM card phone (e.g. Apple iPhone)
- Receive and read text messages
- Charge mobile phone via USB interface
- Phone book automatically imported from mobile phone
- Module operated via head unit
- Compatible with a variety of phones with SAP\* profile (e.g. Nokia, BlackBerry)
- Supports new COMAND Online features (Mercedes-Benz apps)

\*SAP (SIM Access Profile) allows the module to read your mobile phone's SIM card

*For further information about using the phone while in your vehicle, go to [www.mercedes-benz.com/connect](http://www.mercedes-benz.com/connect) or contact your Mercedes-Benz partner*







01

#### 01 COMAND Online multimedia system with 6-DVD changer

High-performance multimedia system with 6-DVD changer, hard-drive navigation system, telephone keypad and internet browser, shown on high-resolution, 17.8 cm colour display

- Navigation system with 2D/3D map views, Speed Limit Assist and automatic congestion avoidance (TMC Pro)
- Unrestricted internet access – when vehicle is stationary only
- MUSIC REGISTER with 10 GB storage for diverse audio files (MP3, WMA, AAC), USB interface incl. CD cover display and AUX-IN connection (in centre armrest), Bluetooth® interface with hands-free function and audio streaming for music playback, slot for SD memory cards, DVD Video
- LINGUATRONIC voice-operated control system for audio, phone and navigation

The Mercedes-Benz Bluetooth® (SAP) telephone module with integrated UMTS module and a direct connection to the external aerial ensures that COMAND Online has a fast, stable and reliable internet connection (see pages 16/17)



02

#### 02 Europe navigation DVD for COMAND Online

Did you know that we update around 20% of the information on our navigation CDs and DVDs every year? Changes include new roads and junctions, altered priorities, new points of interest such as filling stations and restaurants and additional countries, above all in Eastern Europe. Save time and spare yourself the annoyance of unnecessary detours by asking your Mercedes-Benz partner for the latest navigation DVDs

#### 03 SD memory card

The COMAND Online system in your vehicle features a slot for SD memory cards. You can listen to music directly from an SD memory card or upload it onto your COMAND system's hard drive

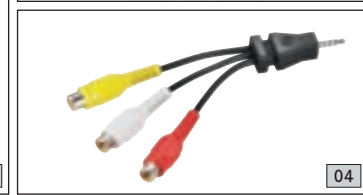
#### 04 Media Interface video cable

Transforms your Mercedes-Benz into a cinema: watch videos on the high-quality 17.8 cm colour display of your COMAND Online system – while the vehicle is stationary. The cable connects the video source of your choice (e.g. camcorder, iPod video, iPhone, video player, etc.) to your vehicle's Media Interface via the AUX connection

Only in conjunction with Media Interface (Code 518). Does not support your iPhone's phone function. Please contact your Mercedes-Benz partner for further details



03



04



05

## 05 Mobile-phone holders

When it comes to selecting a mobile for your Mercedes-Benz, you've never had so much choice. One "click" is all it takes to replace our mobile-phone holders. It takes a matter of seconds and is as straightforward as inserting the mobile into the holder itself.

So changing your mobile and even alternating between different models of mobile no longer presents a problem. Telephone technology for enhanced convenience on board

Other advantages:

- Optimum reception quality as a result of using vehicle's external aerial
- Mobile's battery is charged
- Access to internal phone memory
- Convenient operation using multifunction steering wheel

Holders are available for many current mobiles from:

Nokia: N8-00, 6303, 6303i classic, C5-00

Apple: iPhone 3G, iPhone 3GS, iPhone 4, iPhone 4S

BlackBerry: 9700 Bold, 9780 Bold, 9105 Pearl 3G

Sony Ericsson: K850i

Only in conjunction with Convenience Telephony (Code 386)



*For further information about using the phone while in your vehicle, go to [www.mercedes-benz.com/connect](http://www.mercedes-benz.com/connect) or contact your Mercedes-Benz partner*





01

02





# Interior

Interior appointments  
Child safety

- 01 CLASSIC velour floor mat
- 02 Illuminated door sill panel

# Role model

What do Mercedes-Benz floor mats and child seats have in common? They both deliver the ultimate in quality, comfort and safety. Living up to your expectations, day after day.



## Made to last

*Floor mats from Mercedes-Benz offer quality you can rely on. Every floor mat has to earn its star logo before it is allowed to keep your vehicle clean and dry. The mats undergo the toughest endurance and heel scuffing tests. They also have to prove resistant to sunlight, dirt and weight loading, and must emerge from the series of tests with their outstanding quality undiminished.*

*Inside your vehicle you can check the quality of Mercedes-Benz floor mats for yourself. They are precision-tailored to the dimensions of the footwell, clip-fastened to the floor of the vehicle and footrest to prevent slipping and absolutely dimensionally stable, thanks to their special layered construction. Your floor mats are made to cope with any demand you place on them*



# Interior

Interior appointments



## 01 CLASSIC velour floor mats

Elegant, high-quality tufted velour mats, featuring metal badge with Mercedes-Benz lettering. Available in black, flannel grey or ginger beige

## 02 CLASSIC all-season floor mats

Robust, washable synthetic mats, designed for heavy use. Contemporary design with recessed areas and raised edge. Distinctive Mercedes-Benz star logo. Available in black





#### 01 Illuminated door sill panels

A distinctive, eye-catching accessory, whether in daylight or at night - "Mercedes-Benz" lettering illuminated in brilliant white, set in an elegant ground stainless steel panel



02

## Mercedes-Benz child safety

Mercedes-Benz child seats are available with automatic child seat recognition as an option. If your car also has automatic child seat recognition (Code U18), the front passenger airbag is automatically deactivated when a child seat with automatic child seat recognition is installed on the front passenger seat. All child seats are also suitable for use in vehicles without ISOFIX attachment points.

Mercedes-Benz child seats are available in the “Limited Black” design. The covers are washable and very hardwearing. Replacement covers for the head sections of all child seats are available as an option in flannel grey and chilli red [pictures 04 and 05] as well as a complete replacement cover in the popular “DaimlerSquare” design [picture 06]



03

## 02 “DUO plus” child seat

Optimum safety for children between the ages of around 8 months and 4 years (9 to 18 kg). Fitted as standard with top tether, an additional belt for securing the head section, a height-adjustable shoulder belt and ventilation channels. With automatic child seat recognition and ISOFIX attachment points. Adjustable tilt

## 03 “KidFix” child seat

Booster seat for optimum side-impact protection, with height-adjustable backrest. The “KidFix” seat is secured using the 3-point seat belt and ISOFIX attachment points. Available with automatic child seat recognition as an option. For children between the ages of around 3.5 and 12 (15 to 36 kg)

## 04–06 Child seat covers

Replacement covers are available for all child seat models – either in the form of a cover for the head section in flannel grey [picture 04] or chilli red [05] or as a complete replacement cover in the popular “DaimlerSquare” design [06]



04



05



06







# Cargo & Care

Boot accessories



01

01 Shallow boot tub

# Lifestyle

Your SL is the perfect car for every occasion. And this section highlights practical products, designed for every trip. Precision-tailored to your vehicle and your individual needs. In top Mercedes-Benz quality.



01



02



03



04

# Cargo & Care

Boot accessories



05

## 01 Shallow boot tub

Made from polypropylene with ribbed structure.  
Suitable for transporting foodstuffs

## 02 Tie-down strap

Even heavy objects can be secured in place easily  
using this strap

## 03 Shopping crate

Anthracite. Collapsible

## 04 Charger with trickle charge function

New life for your car's battery: checks, charges and  
revives your battery - even if it's totally flat.  
Tailored to your vehicle's complex electronic systems.  
Available in 3.6 A and 25 A version



06

## 05 Vehicle tool kit

Everything you need to change a wheel - from the wheel  
wrench to a pair of gloves. All handily stored in a compact  
synthetic bag

## 06 Fluorescent jacket

Already compulsory in many countries: fluorescent jackets  
with high-visibility reflex stripes. Available individually or  
as a pack of two





01

02

# AMG

Light-alloy wheels

Bodystyling

Interior



03

- 01 AMG front apron
- 02 AMG 5-spoke wheel
- 03 AMG side skirts

## 01 AMG bodystyling

A sporty exterior for your SL-Class. The AMG bodystyling components – front apron, rear apron and side skirts – are designed for optimum dynamism | also pictured on previous page

*AMG light-alloy wheels are supplied without tyres, hub caps, valve caps or wheel bolts*





Light-alloy wheels

Bodystyling

Interior



## 02 AMG 5-spoke wheel

Finish: silver/high-sheen

Wheel: 8.5J x 19 ET 35.5

Tyre: 255/35 R19

A231 401 1602 7X25

Option for rear axle:

Wheel: 9.5J x 19 ET 48

Tyre: 285/30 R19

A231 401 1702 7X25

## 03 AMG 5-spoke wheel

Finish: titanium grey/high-sheen

Wheel: 8.5J x 19 ET 35.5

Tyre: 255/35 R19

A231 401 1602 7X21

Option for rear axle:

Wheel: 9.5J x 19 ET 48

Tyre: 285/30 R19

A231 401 1702 7X21

## 04 AMG 5-spoke wheel

Finish: black/high-sheen

Wheel: 8.5J x 19 ET 34.5

Tyre: 255/35 R19

B6 603 1519

Option for rear axle:

Wheel: 9.5J x 19 ET 48

Tyre: 285/30 R19

B6 603 1520

**AMG floor mats** | not pictured

With embroidered AMG lettering

**AMG indoor car cover** | not pictured

Silver-coloured, with black AMG logo

# Genuine accessories for the SL-Class

Light-alloy wheels are supplied without tyres, wheel bolts or hub caps

Further colour variants for individual products can be found in the separate price list for this brochure

Description	p	Item no.
<b>AMG floor mat</b> (LHD, driver, black)	33	A231 680 0204
<b>AMG floor mats</b> (LHD, complete set, black)	33	A231 680 0004
<b>AMG front apron, with headlamp cleaning system, with PARKTRONIC</b>	32	A231 880 3604
<b>AMG front apron, with headlamp cleaning system, without PARKTRONIC</b>	32	A231 880 3504
<b>AMG indoor car cover</b>	33	A231 899 0049
<b>AMG light-alloy wheels</b>	33	from page 33
<b>AMG rear apron, with PARKTRONIC</b>	32	A231 880 7571
<b>AMG rear apron, without PARKTRONIC</b>	32	A231 880 7471
<b>AMG side skirts</b>	32	A231 690 0640
<b>Bluetooth® (SAP) telephone module, V4</b>		
	17	A212 906 4202
<b>Charger with trickle charge function (ECE version, 3.6 A)</b>		
	29	A000 982 0121
<b>Charger with trickle charge function (ECE version, 25 A)</b>		
	29	A000 982 0321
<b>Child seat cover for "DUO plus", DaimlerSquare</b>		
	25	A000 970 0681 9G43
<b>CLASSIC floor mats</b>		
<b>CLASSIC all-season floor mats</b>		
LHD, set of 2, black	23	A231 680 2148 9G33
<b>CLASSIC velour floor mats</b>		
LHD, set of 2, black	23	A231 680 0048 9F87
LHD, set of 2, flannel grey	23	A231 680 0048 7N02
LHD, set of 2, ginger beige	23	A231 680 0048 8R38
<b>COMAND Online with 6-DVD changer</b>		
	18	on request
<b>"DUO plus" child seat, Limited Black, with automatic child seat recognition</b>		
	25	A000 970 1100 9H95

Description	p	Item no.
<b>Europe navigation DVD for COMAND Online</b>		
	18	on request
<b>Fluorescent jacket, orange</b>		
	29	A000 583 0461
<b>Fluorescent jackets, pack of two, orange/yellow</b>		
	29	A000 583 0361
<b>Headrest cover for "DUO plus", chilli red</b>		
	25	A000 970 0356 3E16
<b>Headrest cover for "DUO plus", flannel grey</b>		
	25	A000 970 0356 7N37
<b>Headrest cover for "KidFix", chilli red</b>		
	25	A000 970 0256 3E16
<b>Headrest cover for "KidFix", flannel grey</b>		
	25	A000 970 0256 7N37
<b>Hub caps, black with chrome star</b>		
	13	B6 647 0200
<b>Hub caps, himalayas grey</b>		
	13	A220 400 0125 7756
<b>Hub caps, Roadster design, black</b>		
	13	B6 647 0201
<b>Hub caps, Roadster design, blue</b>		
	13	B6 647 0120
<b>Hub caps, sterling silver with chrome star</b>		
	13	B6 647 0206
<b>Hub caps, titanium silver with chrome star</b>		
	13	B6 647 0202
<b>Illuminated door sill panels</b>		
	24	on request
<b>"KidFix" child seat, Limited Black, with automatic child seat recognition</b>		
	25	A000 970 1800 9H95

Description	p	Item no.
<b>Light-alloy wheels</b>	8	from page 8
<b>Media Interface video cable (ECE)</b>	18	A001 827 8004
<b>Mobile-phone holders</b> The range is being extended all the time. Please contact your Mercedes-Benz partner for details	19	on request
<b>Rim locks</b>	12	B6 647 0155
<b>RUD-matic DISC snow chain system, without grip links for 255/45 R17</b>	12	B6 758 0881
<b>SD memory card</b>	18	B6 782 3973
<b>Shallow boot tub</b>	29	A231 814 0041
<b>Shopping crate</b>	29	B6 647 0995
<b>Tie-down strap</b>	29	A000 890 0294
<b>Tyre pressure gauge</b>	12	B6 658 8140
<b>Valve caps, black</b>	12	B6 647 2002
<b>Vehicle tool kit</b>	29	B6 685 0788

## Information about fuel consumption and CO<sub>2</sub> emissions

### Fuel consumption<sup>1</sup> (l/100 km)

combined **9.2 – 6.8**

### CO<sub>2</sub> emissions<sup>1</sup> (g/km)

combined **214 – 159**

### Efficiency rating

**E – C**

<sup>1</sup> The figures shown were obtained in accordance with the prescribed measuring process (Directive 80/1268/EEC in the currently applicable version). The figures are not based on an individual vehicle and do not constitute part of the product offer; they are provided solely for purposes of comparison between different vehicle models

More information on the official fuel consumption figures and the official specific CO<sub>2</sub> emissions for new passenger cars is provided in the publication "Leitfaden über den Kraftstoffverbrauch und die CO<sub>2</sub>-Emissionen neuer Personenkraftwagen" ["Guidelines on fuel consumption and CO<sub>2</sub> emissions for new passenger cars"], which is available free of charge from all sales outlets and from Deutsche Automobil Treuhand GmbH



Please note: changes may have been made to the products since this brochure went to press (31.01.2012). The manufacturer reserves the right to make changes to the design, form, colour and specification during the delivery period, provided these changes, while taking into account the interests of the vendor, can be deemed reasonable with respect to the purchaser. Where the vendor or the manufacturer uses symbols or numbers to describe an order or the subject of an order, no rights may be derived solely from these. The illustrations may show accessories and items of optional equipment which are not part of standard specification. Colours may differ slightly from those shown in the brochure, owing to the limitations of the printing process. This brochure is distributed internationally. It provides a general indication of the range of models, features, optional extras and/or colours available in various countries. Some of the models, features, optional extras and/or colours may not be available in your country or may only be available in a different specification. Additionally some models, features, optional extras and/or colours may only be available in combination with others. For current and more specific information in relation to the range of models, features, optional extras and/or colours available in your country, and their pricing, you should contact your nearest authorised Mercedes-Benz Passenger Car Dealer.