



The Mercedes-Benz Vito.

Tourer model.

Prices effective from June 2020.

Mercedes-Benz





Contents

> Model overview	3
> Mercedes PRO connect	4
> Trims	
Vito Tourer PRO	5
Vito Tourer SELECT	6
Vito Tourer SPORT	7
> Colours and Upholstery	8
> Wheels	9
> Upgrades	10
> Equipment	11
> Engine and gearbox	22
> Fuel consumption	23
> Weights and payloads	24
> Dimensions	25
> List prices	28
> Approved Used	29
> Finance options	30
> After care	31

Please note

This document provides information about the model range line-up and specifications of the Vito Tourer. It also contains key details about options, economy and performance of all variants. Details are correct at time of publication and are subject to revision. Any images used in this document may not reflect UK specification and are for illustrative purposes only. Images may show optional equipment which does not form part of UK standard specification.

The Mercedes-Benz Vito Tourer.



1 model:

Tourer: 9 seats as standard



L1: 4,895mm



L2: 5,140mm



L3: 5,370mm

Height: 1,910mm

3 lengths:

3 trims:



Tourer PRO



Tourer SELECT



Tourer SPORT

Discover more about the other Mercedes-Benz Vito models in our range:

- ▶ [The Vito Panel and Crew Van](#)
- ▶ [The Vito Taxi](#)
- ▶ [The eVito](#)

The Vito. Evolved.

Leaner. Keener. And more intelligent than ever with Mercedes PRO connect - our connected vehicle system that's included as standard in every Vito Tourer and free for 3 years to give you:

> More safety

- If you have an accident, Mercedes-Benz Vans customer services are automatically called and if there's no response, the emergency services will be contacted.
- If you require roadside assistance, eCall will call customer services who will send a technician out to your location.

> More security

- Protect your vehicles with theft warning alerts.
- Lock your vehicle remotely from your mobile.
- Use geofencing to alert you when your vehicles leave a defined area.

> More efficiency

- Assign tasks, track jobs and contact your drivers at the touch of a button.
- Keep your vans on the road for as long as possible with Optimised Assistance - intelligent software which gives you real-time reports of critical parts and fluids.
- Record your trips and see a log of your journeys to help with your mileage claims.

> Arrange a demonstration at your nearest Dealership

> Download the Mercedes PRO connect brochure to find out more



- > Services are free for 3 years
- > Simple to set up and use on multiple devices
- > Integrates easily with other telematics systems.

The Mercedes-Benz Vito Tourer

4

The Vito Tourer PRO.

Features include:

Interior

- Double co-driver seat
- Six-way adjustable drivers seat
- Driver and co-driver airbag
- Leather, multifunctional steering wheel
- Locking glovebox

Exterior

- 17" steel wheels
- Door tailgate
- Heated, electrically adjustable mirrors
- Tinted window glass
- Twin sliding doors

Safety, security and connectivity

- Active Brake ASSIST
- ATTENTION ASSIST
- Audio 30 with DAB radio, Apple / Android Car Play
- Crosswind ASSIST
- Cruise control
- Headlight assistant
- Rain sensor

From £26,565*

*Based on a Vito Tourer 110 PRO L1.

• 3 lengths available

L1: 4,895mm
L2: 5,140mm
L3: 5,370mm

• 2 transmission options available

6-speed (manual)
9G-TRONIC PLUS (automatic)

▶ [Arrange a test drive at your nearest Dealership](#)



The Vito Tourer SELECT.

Features include:

Interior

- Double co-driver seat
- Six-way adjustable drivers seat
- Driver and co-driver airbag
- Leather, multifunctional steering wheel
- Locking glovebox

Exterior

- Door tailgate
- Heated, electrically adjustable mirrors
- Tinted window glass
- Twin sliding doors

Safety, security and connectivity

- Active Brake ASSIST
- ATTENTION ASSIST
- Audio 30 with DAB radio, Apple / Android Car Play
- Crosswind ASSIST
- Cruise control
- Headlight assistant
- Rain sensor

Additional features included with the SELECT:

- 17" Light alloy wheels 20-spoke (subject to engine variant)
- Armrests for passengers
- Chrome grille
- Chrome interior package
- Comfort bench seat 1st and 2nd passenger row
- Comfort (eight-way adjustable) driver's seat
- Front and rear coloured bumpers
- Seat rail system
- TEMPOMATIC air conditioning

From £33,000*

*Based on a Vito Tourer 114 SELECT L1.

• 3 lengths available

- L1: 4,895mm
- L2: 5,140mm
- L3: 5,370mm

• 2 transmissions available

- 6-speed (manual)
- 9G-TRONIC PLUS (automatic)

➤ [Arrange a test drive at your nearest Dealership](#)



Image shows the upgraded Light-alloy wheels - 7,5J x 18 ET 52 (Code R10).



The Mercedes-Benz Vito Tourer

The Vito Tourer SPORT.

Features include:

Interior

- Armrests for passengers
- Comfort (eight-way adjustable) driver's seat
- Comfort bench seat 1st and 2nd passenger row
- Driver's seat lumbar support
- Driver and co-driver airbag
- Locking glovebox
- Multifunctional steering wheel
- Seat rail system
- TEMPMATIC air conditioning
- Velour floor mats

Exterior

- 17" Alloy wheels
- Chrome interior package
- Chrome radiator grille
- Front and rear coloured bumpers
- Electrically folding exterior mirrors
- Twin sliding doors

Safety, security and connectivity

- Active Brake ASSIST
- ATTENTION ASSIST
- Cruise control
- Crosswind ASSIST
- Headlight assistant
- Rain sensor

Additional features included with the SPORT:

- AMG side skirts
- Anti-theft protection package
- Audio 40 7" colour touchscreen infotainment system including Navigation with DAB+ Apple / Android Car Play
- Black leatherette upholstery
- Bonnet and sill graphics
- Chrome interior details
- Double locks
- Heated front seats
- Heated windscreen washers
- Large fuel and AdBlue tanks
- LED head and tail lamps
- Metallic paint
- Parking package
- Reversing camera
- Roof rails
- Sports suspension

From £42,235*

*Based on a Vito Tourer 116 SPORT L1.

• 3 lengths available

- L1: 4,895mm
- L2: 5,140mm
- L3: 5,370mm

• 1 transmission available

- 9G-TRONIC PLUS (automatic)

➤ [Arrange a test drive at your nearest Dealership](#)

➤ [Find out more about the Vito SPORT Crew Van](#)



Image shows the upgraded 18" Light alloy wheels 5-twin spoke - 7.5 J x 18 ET 52 (Code R10).



The Mercedes-Benz Vito Tourer

Colours and upholstery.

Solid paints



Arctic white
(Standard on the Vito Tourer
PRO and SELECT)



Pebble grey



Jupiter red



Navy blue



Granite green

Metallic paints



Hyacinth red
(Standard on the Vito Tourer
SPORT)



Brilliant silver



Obsidian black



Cavansite blue

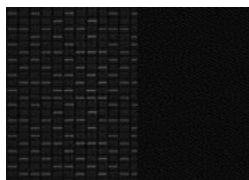


Dark Graphite grey

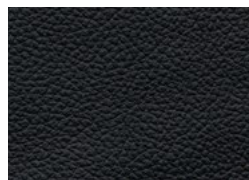


Selenite grey

Interior upholstery



Black Caluma seat upholstery
(Standard on the Vito Tourer
PRO and SELECT)



Black leatherette seat upholstery
(Standard on the Vito Tourer SPORT)

➤ [For paint pricing, see page 12](#)

➤ [For upholstery pricing, see pages 16 and 17](#)

Wheels.

Our upgraded wheel options include:

1. 16" Light alloy wheels 10-spoke (RL5)
2. 17" Full wheel cover (RD8)
3. 17" Light alloy wheels 20-spoke (RK8)
4. 17" Light alloy wheels 5-spoke (RL8)
5. 17" Light alloy wheels 5-twin spoke (R1N)
6. 18" Light alloy wheels 5-twin spoke (R10)
7. 18" Light alloy wheels 5-spoke (R1P)
8. 19" Light alloy wheels 16-spoke (RK3)
9. 19" Light alloy wheels 10-twin spoke (R1Q)

Please note, more wheel options are available - [see page 11](#) for more information.
Consult your local Dealer for the full range of wheels available.

[Find your nearest Dealership](#)



Equipment (standard and optional overview).

Every Vito Tourer model comes with a host of standard features, plus a range of optional equipment and packages you can add to enhance your van.

Over the next few pages, you'll see an overview of all the equipment and packages using the following key to highlight if they are standard, optional, equipment dependant or unfortunately, not available.

Key: ● Standard ○ Optional ◇ Equipment dependant option available – Not available



Equipment	Description	Option code	PRO	SELECT	SPORT	Basic Price exc. VAT	Basic Price inc. VAT
Upgrade packages							
Comfort	Bunk package The Bunk package includes a folding 3-seater bench in the rear, which can be folded into an occasional bed with integrated drawers. The bed measures approx. 2.03 x 1.35m for compact models and 1.93 x 1.35m in the long version. The 3-seater bench has integrated three-point seat belts, and ISOFIX attachments Top Tether for all 3 seats. The following options will also be added: Comfort seats, front (SB1+SB2), Seat rail system with quick-locking (UR1), Santiago black fabric (VY4), Comfort overhead control panel (LC4) and Privacy glass, rear (W70); only available for L1 and L2 models.	V9B	○	○	-	Please speak to your local Dealer for more information	
	Table package A folding table is installed in the first rear seat row. The table can be raised on its stem, and provides two additional stowage compartments when raised, includes two integrated cupholders. The table is mounted on two additional rails which are only installed if the table is ordered. Table package (V9A) must always be in conjunction with Bunk Package (V9B). The following options will also be added: Folding table (YE2), 12V plug socket in rear (ES2), 2 detachable cup holders in armrests (FG9), Stowage nets on seat backrests (SZ7/SZ8), 3-seater bench as luxury bunk, 2nd rear seat row (US3), Santiago black fabric (VY4), Black shaded glass in rear (W70).	V9A	○	○	-	£580.00	£696.00
Drivers Assistance	Lane tracking package Includes Blind Spot ASSIST (JA7) and Lane Keeping ASSIST (JW5).	JP4	○	○	○	£760.00	£912.00
Mirrors	Mirror package The Vito Mirror package uses automatically dimming mirrors and electrically folding outside mirrors to increase the driving comfort and driving safety.	FP2	○	○	●	£340.00	£408.00
Parking	Parking package Includes Active parking ASSIST (JA7) and reversing camera (FR8). The vehicle automatically parks in 'parallel' and 'bay' parking spaces. Steering is carried out automatically: The driver only has to control the accelerator, brake, and gears. In conjunction with automatic transmission. Active Parking ASSIST also takes care of braking.	EZ5	○	○	●	£1,010.00	£1,212.00

Changes to individual option availability and combinations may occur depending on vehicle specification choices and the continuing evolution and adaptation of our product range. These changes may not be immediately reflected in this document as they occur, but will be introduced at the next revision opportunity.

Equipment (standard and optional overview).

Equipment	Description	Option code	PRO	SELECT	SPORT	Basic Price exc. VAT	Basic Price inc. VAT
Safety	Active safety package Includes the following safety assistance systems: – Blind Spot ASSIST (JA7) – Lane Keeping ASSIST (JW5) – Headlamp ASSIST (LA2) automatically switches the dipped beams on and off.	JP2	○	○	○	£815.00	£978
Security	Anti-theft protection package Thatcham category 1 approved. Includes cab interior and load-space monitoring with double locks, battery back-up siren and tow-away protection as standard on all Vito models.	FY1	○	○	●	£320.00	£384.00
Trim and Upholstery	Chrome interior appointments package The chrome interior package further enhances the look of the driver's and front-passenger's area with its trim elements on the dashboard and in the front doors.	FP4	○	●	●	£125.00	£150.00
Exterior Features							
Bodywork	Carrier bars	D15	○	○	○	£150.00	£180.00
	Chrome radiator grille Only available in conjunction with painted bumpers (CM2).	FK2	○	●	●	£110.00	£132.00
	Roof rails Maximum load of 150kg, when supported by three carrier bars.	D12	○	○	●	£380.00	£456.00
Doors	Electrically operated side loading doors Not available in conjunction with sliding windows (W18+W19).	T55 + T56	○	○	●	£980.00	£1,176.00
	Twin rear doors Open up to 180°.	W50	○	○	○	£220.00	£264.00
	Tailgate	W65	●	●	●	£0.00	£0.00
Fuel Tanks	57L capacity fuel tank	KB6	●	●	●	£0.00	£0.00
	70L capacity fuel tank	KB5	○	○	○	£80.00	£96.00
	Red diesel filler cap	K56	○	○	○	£20.00	£24.00
	Fuel filter with water separator The fuel filter with water separator is able to remove the elevated water content from poor-quality diesel fuel and thereby increase the reliability of the engine.	KL5	○	○	○	£105.00	£126.00

● Standard ○ Optional ◇ Equipment dependant option available – Not available

Equipment (standard and optional overview).

Equipment	Description	Option code	PRO	SELECT	SPORT	Basic Price exc. VAT	Basic Price inc. VAT
Paint	Pre-treated bumpers The pre-treated surfaces facilitate the painting of the bumpers in the desired colour at a later date.	CM3	○	-	-	£115.00	£138.00
			-	○	-	£0.00	£0.00
	Colour-coded front and rear bumpers	CM2	○	●	●	£315.00	£378.00
	Metallic or non-metallic optional paint colour See page 8 for the range of colours available, or speak to your local Mercedes-Benz Van Dealer.	/	○	○	●	£565.00	£678.00
Roof	Panoramic glass sunroof Only available for L2 models with electric rear windows (W32).	D34	○	○	○	£2,335.00	£2,802.00
Tyres	All-season tyres Compared to summer tyres, all-season tyres excel with better traction in wintry road conditions.	RM0	○	○	-	£155.00	£186.00
	Comfort tyres Available for 17" + wheels	RM4	○	○	●	£0.00	£0.00
	Mud and Slush (winter) tyres Available for selected wheels. Please check with your Dealer for availability.	RM1	○	○	○	£145.00	£174.00
	Summer tyres	RM6	●	●	●	£0.00	£0.00
	Tyres 205/65 R16	RG1	○	●	-	£115.00	£138.00
	Tyres 225/60 R16	RG2	○	-	-	£260.00	£312.00
-			○	-	£155.00	£186.00	
Wheels	16" Steel wheels Wheel: 6.5 J x 16 ET 52 Tyres: 195/65 R 16 tyres (RG6) on 114 engines or 205/65 R 16 tyres (RG1) on 116 engines. Standard when S23 Double Co-Driver seat is removed	RS3	○	-	-	£0.00	£0.00
			○	-	-	£0.00	£0.00
	17" Steel wheels Wheel: 6.5 J x 17 ET 52 Tyres: 205/65 R 16 tyres (RG1)	RS7	●	-	-	£0.00	£0.00
	16" Full wheel cover Compatible with (RS3)	RD8	○	-	-	£80.00	£96.00
	17" Full wheel cover Compatible with (RS7)	RD8	○	-	-	£80.00	£96.00

● Standard ○ Optional ◇ Equipment dependant option available - Not available

Equipment (standard and optional overview).

Equipment	Description	Option code	PRO	SELECT	SPORT	Basic Price exc. VAT	Basic Price inc. VAT
Wheels	16" Alloy wheels (10-spoke) Wheel: 6.5 J x 16 ET 52 Tyres: 205/65 R16 tyres (RG1) Standard on SELECT 114 and 116 engines.	RL5	○	○	-	£585.00	£702.00
	17" Alloy wheels (5-spoke) Wheel: 7 J x 17 ET 51 Tyres: 225/55 R17 tyres (RG7)	RL8	○	○	-	£950.00	£1,140.00
	17" Alloy wheels (5-twin spoke) Wheel: 7.0 J x 17 ET 51 Tyres: 225/55 R17 (RG1)	R1N	○	○	●	£1225.00	£1470.00
	17" Alloy wheels (20-spoke) Wheel: 7 J x 17 ET 51 Tyres: 225/55 R17 tyres (RG7) Standard on SELECT 119 engine.	RK8	○	●	-	£950.00	£1,140.00
	18" Alloy wheels (5-spoke) Wheel: 7.5 J x 17 ET 52 Tyres: 225/55 R18 tyres (RH4)	R1P	○	○	○	£1,685.00	£2,022.00
	18" Alloy wheels (5-twin spoke) Wheel: 7.5 J x 18 ET 52 Tyres: 245/45 R18 tyres (RH4)	R10	○	○	○	£1,685.00	£2,022.00
	19" Alloy wheels (5-twin spoke) Bi-colour Wheel: 8 J x 19 ET 52 Tyres: 245/45 R19 tyres (RK1)	RL3	○	○	○	£1,290.00	£1,548.00
	19" Alloy wheels (10-twin spoke) Wheel: 8 J x 19 ET 52 Tyres: 245/45 R19 tyres (RK1)	R1Q	○	○	○	£2,140.00	£2,568.00
	19" Alloy wheels (16-spoke) Wheel: 8 J x 19 ET 52 Tyres: 245/45 R19 tyres (RK1)	RK3	○	○	○	£2,000.00	£2,400.00

● Standard ○ Optional ◇ Equipment dependant option available - Not available

Equipment (standard and optional overview).

Equipment	Description	Option code	PRO	SELECT	SPORT	Basic Price exc. VAT	Basic Price inc. VAT
Interior Features							
Flooring	Front carpets	V44	○	●	●	£45.00	£54.00
	Rear carpets	V33	○	●	●	£80.00	£96.00
	Velour floor mats The black velour floor mats visually enhance the cockpit and underscore the elegant, sporty wellness ambience in the vehicle.	VL2	○	○	●	£45.00	£54.00
Heating and ventilation	Auxiliary hot water heater with timer The hot-water auxiliary heater indulges driver and passengers right from the start of the journey with cosy warmth.	H12	○	○	○	£540.00	£648.00
	Auxiliary heat exchanger in rear passenger compartment Only available in conjunction with TEMPOMATIC air-conditioning (HH9).	H13	○	○	○	£350.00	£420.00
	Diesel powered auxiliary night air heater The hot-air auxiliary heater heats the interior to the desired temperature when the vehicle is stopped.	HZ1	○	○	-	£1,845.83	£2,215.00
	Electrical auxiliary demister heating elements The electric heater booster ensures a stronger and faster heating output for the vehicle interior in low outside temperatures when the engine is cold.	HZ0	●	●	●	£0.00	£0.00
	Pollen filter The pollen filter keeps even the smallest of particles out of the interior and can therefore protect against allergic reactions.	HF2	○	-	-	£40.00	£48.00
	Remote control for auxiliary hot water heater with timer The radio remote control allows the hot-water auxiliary heater to be switched on and off from a distance, ensuring pleasant temperatures in the interior already when getting in.	HY1	○	○	○	£245.00	£294.00
	TEMPOMATIC air-conditioning Semi-automatic temperature control including outside air temperature display.	HH9	○	●	●	£950.00	£1,140.00
	Rear TEMPOMATIC air-conditioning Only available in conjunction with TEMPOMATIC air-conditioning (HH9) or THERMOTRONIC climate control (HH4).	HZ7	○	○	●	£735.00	£882.00
	THERMOTRONIC climate control Automatic climate control including air-conditioning and outside air temperature display for Tourer PRO models.	HH4	○	-	-	£1,620.00	£1,944.00
-			○	○	£700.00	£840.00	

● Standard ○ Optional ◇ Equipment dependant option available - Not available

Equipment (standard and optional overview).

Equipment	Description	Option code	PRO	SELECT	SPORT	Basic Price exc. VAT	Basic Price inc. VAT
Seating	Comfort driver's seat Comfort driver seat with inboard armrest and 4-way adjustable headrest.	SB1	○	●	●	£110.00	£132.00
	Comfort co-driver's seat Comfort driver and co-driver seat with inboard armrests and 4-way adjustable headrests. This deletes the double co-driver seat and therefore limits the cab area to two occupants.	SB2	○	○	●	£85.00	£102.00
	Comfort bench seat 1st passenger row Removable comfort bench seat with tilting/removable outer seat and outer armrests. Backrests are individually adjustable for recline angle. The bench has a two section seat cushion and a three section backrest and can also be folded into the package position to create additional cargo space. Not available in conjunction with Dual co- driver seat (S23) for crew van models.	US4	○	●	●	£340.00	£408.00
	Comfort bench seat 2nd passenger row Removable comfort bench seat with tilting/removable outer seat and outer armrests. Backrests are individually adjustable for recline angle. The bench has a two section seat cushion and a three section backrest and can also be folded into the package position to create additional cargo space. Only available in combination with Comfort bench seat first passenger row (US4).	US5	○	●	●	£340.00	£408.00
	Comfort bench seat 2nd passenger row as luxury bunk	US3	○	○	-	£340.00	£408.00
	High-comfort swivelling driver's seat Comfort co-driver's seat with inboard armrests and 4-way adjustable headrests.	SB5	○	○	○	£280.00	£336.00
	High-comfort swivelling co-driver's seat Comfort co-driver seat with inboard armrests and 4-way adjustable headrests.	SB6	○	○	○	£280.00	£336.00
	Single co-driver's seat Includes automatic seat belt recognition and airbag deactivation function.	S09	○	-	-	£0.00	£0.00
	Dual co-driver's seat	S23	●	●	○	£245.00	£294.00
	Electrically adjustable driver's seat	SF1	○	-	-	£1,065.00	£1,278.00
			-	○	○	£975.00	£1,170.00
	Electrically adjustable co-driver's seat	SF2	○	-	-	£1,065.00	£1,278.00
			-	○	○	£975.00	£1,170.00
	Heated driver's seat	H16	○	○	●	£145.00	£174.00
Heated co-driver's seat	H15	○	○	●	£140.00	£168.00	

● Standard ○ Optional ◇ Equipment dependant option available - Not available

Equipment (standard and optional overview).

Equipment	Description	Option code	PRO	SELECT	SPORT	Basic Price exc. VAT	Basic Price inc. VAT
Seating	Heated driver's and co-driver's seats (combined) Not available in conjunction with dual co-driver seat (S23).	H16 H15	○	○	●	£280.00	£336.00
	Lumbar support, driver's seat Only available in conjunction with comfort seat (SB1 / SB2) or comfort seats, electronically adjustable (SF1 / SF2). Not available with leatherette trim (VU9).	SE5	○	○	●	£105.00	£126.00
	Lumbar support, co-driver's seat Only available in conjunction with comfort seat (SB1 / SB2) or comfort seats, electronically adjustable (SF1 / SF2). Not available with leatherette trim (VU9).	SE4	○	○	●	£105.00	£126.00
	Seat rail system Allows adjustable seating bench positions. Only available in conjunction with comfort bench seats (US4 and US5).	UR1	○	●	●	£525.00	£630.00
Steering Wheel	Multifunctional leather steering wheel Height and rake adjustable.	CL3	●	●	●	£0.00	£0.00
Storage	2 detachable cup holders, in rear armrests	FG9	○	○	○	£45.00	£54.00
	Armrests for crew/passenger compartment Fitted to the outer side of the crew/passenger compartment bench seat.	U73	○	●	●	£65.00	£78.00
	Footwell centre console with stowage compartment Not available in conjunction with dual co-driver seat (S23).	FF1	○	○	○	£65.00	£78.00
	Footwell centre console with 1-DIN slot Not available in conjunction with dual co-driver seat (S23). Note blanking plate for 1-DIN slot not included.	FF2	○	○	○	£65.00	£78.00
	Parcel shelf The load compartment shelf creates a second stowage space that makes the load compartment flexible and enables convenient loading and unloading.	YG4	○	○	○	£535.00	£642.00
	Stowage net on driver's seat backrest	SZ7	○	○	○	£25.00	£30.00
	Stowage net on co-driver's seat backrest	SZ8	○	○	○	£25.00	£30.00
Table	Folding table The practical, flexibly adjustable folding table offers passengers a flat table surface for working, eating or playing.	YE2	○	○	-	£535.00	£642.00
Trim and upholstery	Black Caluma seat upholstery Breathable and hardwearing.	VY2	●	●	-	£0.00	£0.00

● Standard ○ Optional ◇ Equipment dependant option available - Not available

Equipment (standard and optional overview).

Equipment	Description	Option code	PRO	SELECT	SPORT	Basic Price exc. VAT	Basic Price inc. VAT
Trim and upholstery	Black leatherette seat upholstery Not available with swivelling Comfort Seats (SB5 and SB6).	VU9	○	○	●	£150.00	£180.00
Technology, Software & Electrics							
Alternator	Alternator 14V / 250A	M60	○	○	○	£610.00	£732.00
Audio	Audio 30 7.8 cm (7 inch) touchscreen DAB+ radio includes Smartphone Integration via Apple® CarPlay and Android Auto and also the Bluetooth® interface with audio streaming and hands-free function for making phone calls while driving with minimal distraction. Includes 2 USB ports.	E3C	●	●	-	£0.00	£0.00
	Audio 40 7.8 cm (7 inch) touchscreen DAB+ radio with integrated Navigation. Includes Smartphone Integration via Apple® CarPlay and Android Auto and Bluetooth® interface with audio streaming and hands-free function for making phone calls while driving with minimal distraction. Includes 2 USB ports.	EA4	○	○	●	£660.00	£792.00
Battery	Heavy duty battery Up rated with 95Ah. Standard for 114CDI, 116CDI and 119CDI models.	ED4	●	●	●	£0.00	£0.00
	Additional battery, for auxiliary power supply Capacity will be the same as the selected vehicle battery.	E28	○	○	○	£230.00	£276.00
Electrical	Parameterisable special module (PSM) Facilitates programming of special vehicle functions. Please speak to your Mercedes-Benz Vans Dealer for more information.	ED5	○	○	○	£285.00	£342.00
	12V Plug socket in trunk / load compartment	ES2	○	○	○	£50.00	£60.00
Keys	Additional vehicle keys with remote function Four keys are supplied with the vehicle in total.	FZ9	○	○	○	£105.00	£126.00
Tachograph	Tachograph (digital) Not available in conjunction with Dual co-driver seat (S23). Tachograph manufacturer Continental VDO.	JD1	○	○	○	£740.00	£888.00
Drivers Assistance & Safety							
Airbags	Driver's thorax airbag	SH1	●	●	●	£0.00	£0.00
	Co-driver's thorax airbag Becomes standard with removal of S23 Double Co-driver seat.	SH2	○	○	○	£0.00	£0.00

● Standard ○ Optional ◇ Equipment dependant option available – Not available

Equipment (standard and optional overview).

Equipment	Description	Option code	PRO	SELECT	SPORT	Basic Price exc. VAT	Basic Price inc. VAT
Airbags	Window airbags Fitted for driver and co-driver, from A-pillar to B-pillar.	SH9	●	●	●	£0.00	£0.00
	Window airbags, A-D-pillar Available for Tourer in L2 vehicle length.	SH8	○	○	○	£410.00	£492.00
Drivers Assistance	Active Brake ASSIST Can detect the danger of a collision with the vehicle ahead, stationary traffic and pedestrians by reacting with a visual and audible warning-braking automatically if there is no driver reaction.	BA3	●	●	●	£0.00	£0.00
	Active Distance ASSIST DISTRONIC Automatically maintains the distance to vehicles in front. The system accelerates the vehicle by itself and brakes it with a maximum of half the vehicle's braking power in order to maintain a safe distance. Only available on RWD variants.	ET4	○	○	○	£805.00	£966.00
	ATTENTION ASSIST ATTENTION ASSIST function can detect typical signs of drowsiness and warn the driver.	JW8	●	●	●	£0.00	£0.00
	Blind Spot ASSIST Blind Spot ASSIST can help prevent accidents when changing lanes, for example on the motorway.	JA7	○	○	○	£440.00	£528.00
	Comfort overhead control panel LED interior lighting including cab downlighting and co-/driver reading lamps; also includes a convenient spectacles compartment.	LC4	●	●	●	£0.00	£0.00
	Crosswind ASSIST Crosswind ASSIST detects track offset caused by strong crosswind gusts in due time and helps the driver to stay in lane.	JA8S	●	●	●	£0.00	£0.00
	Cruise Control Includes speed limiter function. Operated via a lever ergonomically positioned on the left of the steering column.	MS1	●	●	●	£0.00	£0.00
	Headlight assistant Automatically switches the vehicle lighting between daytime-running lights and low beam headlights. Standard for 119CDI models includes Heat insulating glass (H20) in all factory fitted glazing.	LA2	●	●	●	£0.00	£0.00
	Lane Keeping ASSIST Warns the driver if lane markings are crossed unintentionally.	JW5	○	○	○	£440.00	£528.00
Rain sensor The rain sensor automatically regulates the wiping frequency of the windscreen wipers with activated intermittent wiping, which makes things easier for the driver. Includes headlight assistant (LA2) and heat insulating glass (H20).	JF1	●	●	●	£0.00	£0.00	

● Standard ○ Optional ◇ Equipment dependant option available – Not available

Equipment (standard and optional overview).

Equipment	Description	Option code	PRO	SELECT	SPORT	Basic Price exc. VAT	Basic Price inc. VAT
Parking	Active Parking ASSIST Includes front and rear PARKTRONIC parking sensors. Vehicle automatically parks in 'parallel' and 'bay' parking spaces. Steering is carried out automatically. The driver only has to control accelerator, brake, and gears. In conjunction with automatic transmission, Active Parking ASSIST also takes care of braking.	EZ7	○	○	●	£730.00	£876.00
	Reversing camera	FR8	○	○	●	£480.00	£576.00
	Reversing warning device The reverse warning alarm warns pedestrians and other road users audibly of the reversing vehicle and thereby enhances their safety.	JW0	○	○	○	£90.00	£108.00
Safety Equipment	First aid kit	Y10	○	○	○	£0.00	£0.00
	Fire extinguisher 1kg	YF7	○	○	○	£120.00	£144.00
	PRE-SAFE The PRE-SAFE® anticipatory occupant protection system can detect critical driving situations at an early stage and initiate preventive protection measures.	JP1	○	○	○	£325.00	£390.00
	Warning triangle	Y44	○	○	○	£35.00	£42.00
Lighting	Blinker lights on rear of roof The additional turn signal lamps on rear of roof improve the visibility of the vehicle, thus enhancing perceptual safety.	L84	○	○	○	£135.00	£162.00
	Halogen front fog lights Not available for vehicles fitted with LED Intelligent Light System (LG2).	L16	○	○	-	£195.00	£234.00
	Illuminated vanity mirror in sun visors	FS5	●	●	●	£0.00	£0.00
	Interior and ambient lighting	LP2	○	●	●	£220.00	£264.00
	LED Intelligent Light System Automatically adapts light intensity appropriately to weather, lighting and speed. Integrated High Beam Assist automatically adjusts the high and low beam to the traffic situation. The cornering function automatically pivots headlamps and illuminates static LED cornering lights into upcoming bends to ensure maximum visibility. Includes Rain sensor (JF1), Headlight assistant (LA2), Heat insulating glass (H20).	LG2	○	○	●	£1,515.00	£1,818.00
	Lights in grab handle in rear	LC3	○	-	-	£55.00	£66.00

● Standard ○ Optional ◇ Equipment dependant option available - Not available

Equipment (standard and optional overview).

Equipment	Description	Option code	PRO	SELECT	SPORT	Basic Price exc. VAT	Basic Price inc. VAT
Loading & Towing							
Gross Vehicle Weight (GVW)	Gross Vehicle Weight 3.1T Only available with removal of Double Co-Driver seat (S23). Standard for FWD engines.	XA8	○	○	●	£0.00	£0.00
	Gross Vehicle Weight 3.2T	XA5	●	●	-	£0.00	£0.00
Towing	Pre-installation for trailer towing electrics A separate trailer control module, trailer socket connector and workshop activity to parameterise the vehicle instrument cluster will be required to activate trailer electrics, costs for which are not included in this option price. Please check with the relevant authority. Does not include towbar. Please note: does not include Tachograph. For commercial use a tachograph may be legally required when towing equipment is fitted. Please check with the relevant authority.	E57	○	○	○	£205.00	£246.00
	Fixed towbar head Towing cross member with single 13-pin trailer electrical socket and fixed towball. Maximum towing capacity depends on vehicle specification, please check with your retailer for final capacity and gross combination weight. Does not include tachograph - for commercial use a tachograph may be legally required when towing equipment is fitted. Please check with the relevant authority.	Q22	○	○	○	£340.00	£408.00
	Removable towbar Towing cross member with single 13-pin trailer electrical socket and removable towball. Maximum towing capacity depends on vehicle specification, please check with your retailer for final capacity and gross combination weight. Does not include tachograph - for commercial use a tachograph may be legally required when towing equipment is fitted. Please check with the relevant authority.	Q50	○	○	○	£665.00	£798.00
	Upgraded towing capacity to 2.5T Includes 13-pin electrical interface. Only available for RWD models with 7G-TRONIC PLUS automatic transmission. Please check maximum permissible gross train weight with your local Mercedes-Benz Vans Dealer.	QA4	○	○	-	£65.00	£78.00
Mirrors & Windows							
Mirrors	Electrically folding door mirrors Only available in conjunction with Electrically heated and adjustable door mirrors (F68).	F64	○	○	●	£190.00	£228.00
	Heated, electrically adjustable wing mirrors Mirror heating reduces condensation in cold weather and prevents icing-up of the mirrors. The exterior mirrors are heated automatically upon vehicle start when the outside temperature is low or when the rear defrost function is activated.	F68	●	●	●	£0.00	£0.00

● Standard ○ Optional ◇ Equipment dependant option available - Not available

Equipment (standard and optional overview).

Equipment	Description	Option code	PRO	SELECT	SPORT	Basic Price exc. VAT	Basic Price inc. VAT
Windows	Black-tinted windows in rear 90% window tint offers attractive thermal and privacy protection. Applies to all windows after the B-pillar.	W70	○	○	●	£480.00	£576.00
	Convenience opening and closing Convenience opening and closing of the front windows via remote central locking.	FZ8	○	○	○	£35.00	£42.00
	C-D pillar windows Includes tinted glass—lightly tinted, green (H20).	W29	●	●	●	£0.00	£0.00
	C-D pillar windows, electrically opening	W32	○	○	○	£320.00	£384.00
	Heat-insulating glass Windscreen (laminated glass), side windows and rear window (single-pane safety glass) are tinted green, reducing the sunlight's heating effect on the interior.	H20	●	●	●	£0.00	£0.00
	Heated windscreen washer system	F48	○	○	●	£180.00	£216.00

● Standard ○ Optional ◇ Equipment dependant option available – Not available

Engine and gearbox.

Engine specifications	PRO		SELECT			SPORT		
	110CDI	114CDI	114CDI	116CDI	119CDI	116CDI	119CDI	
Fuel	Diesel		Diesel	Diesel		Diesel		
Engine designation	OM622		OM622	OM654		OM654		
Mixture preparation/ injection method	Common-rail direct injection, 2,500bar max. injection pressure		Common-rail direct injection, 2,500bar max. injection pressure	Common-rail direct injection, 1,600bar max. injection pressure		Common-rail direct injection, 1,600bar max. injection pressure		
Cylinder arrangement	4, in-line		4, in-line	4, in-line		4, in-line		
Cubic capacity	1,749cc		1,749cc	1,950cc		1,950cc		
EU exhaust emission standard	Euro 6		Euro 6	Euro 6		Euro 6		
Output, max.	100hp	134hp	134hp	134hp	160hp	187hp	160hp	187hp
	75kW	100kW	100Kw	100kW	120kW	140kW	120kW	140kW
	102PS	136PS	136PS	136PS	163PS	190PS	163PS	190PS
	@ 3,800rpm		@ 3,800rpm	@ 3,800rpm		@ 3,800rpm		
Torque, max.	270Nm @ 1,500-2,250 rpm	330Nm @ 1,750-2,500rpm	330Nm @ 1,750-2,500 RPM	330Nm @ 1,200-2,400rpm	380Nm @ 1,400-2,400rpm	440Nm @ 1,400-2,600rpm	380Nm @ 1,400-2,400rpm	440Nm @ 1,400-2,600rpm
	57L (70L with option KB5 - fuel tank, large)		57L (70L with option KB5 - fuel tank, large)	57L (70L with option KB5 - fuel tank, large)		57L (70L with option KB5 - fuel tank, large)		
Fuel tank capacity	24L		24L	24L		24L		
AdBlue® capacity	●	●	●	●	●	●	●	
Diesel Particulate Filter [DPF]	●	●	●	-	-	-	-	
6-speed manual gearbox	-	-	-	●	●	●	●	
9G-TRONIC automatic gearbox	Front		Front	Rear		Rear		
Driven Axle	14V / 185A		14V / 185A	14V / 200A with Alternator Management (battery charged during braking and overrun)		14V / 200A with Alternator Management (battery charged during braking and overrun)		
Alternator	12 V/92 Ah AGM		12 V/92 Ah AGM	12V / 95Ah (AGM)		12V / 95Ah (AGM)		
Battery - DGS								

● Standard ○ Optional - Not available

Fuel consumption, performance and CO₂ emissions.

Model	CO ₂ emissions (g/km) [WLTP]					Fuel Consumption (MPG) [WLTP]				
	Combined	Low-speed	Medium-speed	High-speed	Extra high-speed	Combined	Low-speed	Medium-speed	High-speed	Extra high-speed
Tourer - PRO										
110 FWD Tourer L1	197	238	190	169	208	37.7	31.0	38.7	43.5	35.3
114 FWD Tourer L1	194	244	190	167	203	38.2	30.4	39.2	44.1	36.7
114 RWD Tourer L1	186	214	183	162	197	39.8	34.4	40.4	45.6	37.7
110 FWD Tourer L2	199	241	193	171	211	37.2	30.7	38.2	43.5	35.3
114 FWD Tourer L2	197	247	192	169	205	37.7	30.1	38.7	44.1	36.2
114 RWD Tourer L2	188	217	186	163	199	39.2	34.0	39.8	45.6	37.2
110 FWD Tourer L3	200	242	194	172	212	37.2	30.7	38.2	42.8	34.9
114 FWD Tourer L3	198	248	193	169	206	37.7	29.7	38.2	43.5	36.2
114 RWD Tourer L3	188	218	187	164	200	39.2	34.0	39.8	44.8	37.2
Tourer - SELECT										
114 FWD Tourer L1	199	250	195	171	206	38.2	29.4	37.7	43.5	35.8
114 RWD Tourer L1	190	220	189	165	201	38.7	33.6	39.2	44.8	36.7
116 RWD Tourer L1	190	220	189	165	201	38.7	33.6	39.2	44.8	36.7
119 RWD Tourer L1	200	232	198	176	210	37.2	31.7	37.2	42.2	35.3
114 FWD Tourer L2	201	253	198	173	208	36.7	29.1	37.2	42.8	35.3
114 RWD Tourer L2	192	223	191	167	202	38.7	33.2	38.7	44.1	36.7
116 RWD Tourer L2	192	223	191	167	202	38.7	33.2	38.7	44.1	36.7
119 RWD Tourer L2	202	235	201	178	211	36.7	31.4	36.7	41.5	35.3
114 FWD Tourer L3	202	255	199	173	209	36.7	29.1	37.2	42.8	35.3
114 RWD Tourer L3	193	224	193	168	203	38.2	32.8	38.2	44.1	36.7
116 RWD Tourer L3	193	224	193	168	203	38.2	32.8	38.2	44.1	36.7
119 RWD Tourer L3	203	236	202	179	212	36.7	31.4	36.7	41.5	34.9
Tourer - SPORT										
116 RWD Tourer L1	199	229	199	174	210	37.2	32.5	37.2	42.2	35.3
119 RWD Tourer L1	209	241	207	185	219	35.3	30.7	35.8	39.8	34.0
116 RWD Tourer L2	201	231	201	176	211	36.7	32.1	36.7	42.2	34.9
119 RWD Tourer L2	211	244	209	187	220	35.3	30.4	35.3	39.8	33.6

All figures are based on a standard specification. The choice of wheels and transmission may affect CO₂ emissions and corresponding Road Fund Licence. The indicated values were determined according to the prescribed measurement method - Worldwide Harmonised Light Vehicle Test Procedure (WLTP). Figures shown may include options which are not available in the UK. Figures shown are for comparability purposes; only compare with other vans tested to the same technical procedures. Figures may not reflect real life driving results, which will depend upon a number of factors including factory-fitted options, accessories fitted (post registration), variations in weather, driving styles and vehicle load. Further information about the test used to establish fuel consumption and CO₂ figures can be found at <https://www.mercedes-benz.co.uk/vans/en/WLTP>

Weights and payloads.

Model	Gross Vehicle Weight (kg)	Unladen weight (kg)	Payload (kg)*	Gross Train Weight (kg)
Tourer - PRO				
110 FWD Tourer L1	3,100	2,096	1,004	4,800
114 FWD Tourer L1	3,100	2,096	1,004	4,800
114 RWD Tourer L1	3,200	2,187	1,013	5,200
110 FWD Tourer L2	3,100	2,148	952	4,800
114 FWD Tourer L2	3,100	2,148	952	4,800
114 RWD Tourer L2	3,200	2,239	961	5,200
110 FWD Tourer L3	3,100	2,173	927	4,800
114 FWD Tourer L3	3,100	2,173	927	4,800
114 RWD Tourer L3	3,200	2,264	936	5,200
Tourer - SELECT				
114 FWD Tourer L1	3,100	2,212	888	4,800
114 RWD Tourer L1	3,200	2,304	896	5,200
116 RWD Tourer L1	3,200	2,304	896	5,200
119 RWD Tourer L1	3,200	2,294	906	5,200
114 FWD Tourer L2	3,100	2,264	836	4,800
114 RWD Tourer L2	3,200	2,356	844	5,200
116 RWD Tourer L2	3,200	2,356	844	5,200
119 RWD Tourer L2	3,200	2,346	854	5,200
114 FWD Tourer L3	3,100	2,289	811	4,800
114 RWD Tourer L3	3,200	2,381	819	5,200
116 RWD Tourer L3	3,200	2,381	819	5,200
119 RWD Tourer L3	3,200	2,371	829	5,200
Tourer - SPORT				
116 RWD Tourer L1	3,100	2,360	740	5,100
119 RWD Tourer L1	3,100	2,350	750	5,100
116 RWD Tourer L2	3,100	2,412	688	5,100
119 RWD Tourer L2	3,100	2,402	698	5,100

All figures are based on a standard specification.

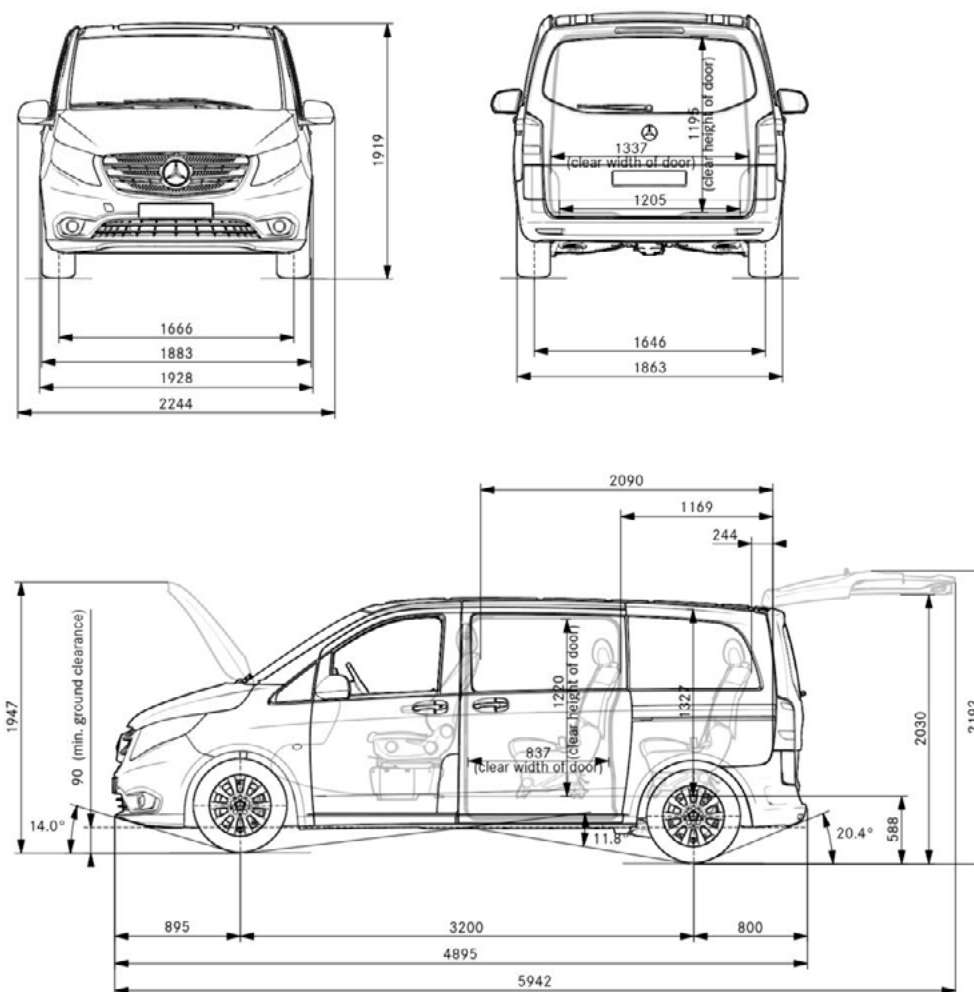
The choice of wheels and transmission may affect CO₂ emissions and corresponding Road Fund Licence.

The indicated values were determined according to the prescribed measurement method - Worldwide Harmonised Light Vehicle Test Procedure (WLTP). Figures shown may include options which are not available in the UK. Figures shown are for comparability purposes; only compare with other vans tested to the same technical procedures. Figures may not reflect real life driving results, which will depend upon a number of factors including factory-fitted options, accessories fitted (post registration), variations in weather, driving styles and vehicle load. Further information about the test used to establish fuel consumption and CO₂ figures can be found at <https://www.mercedes-benz.co.uk/vans/en/WLTP>

Dimensions.

Vito Tourer L1

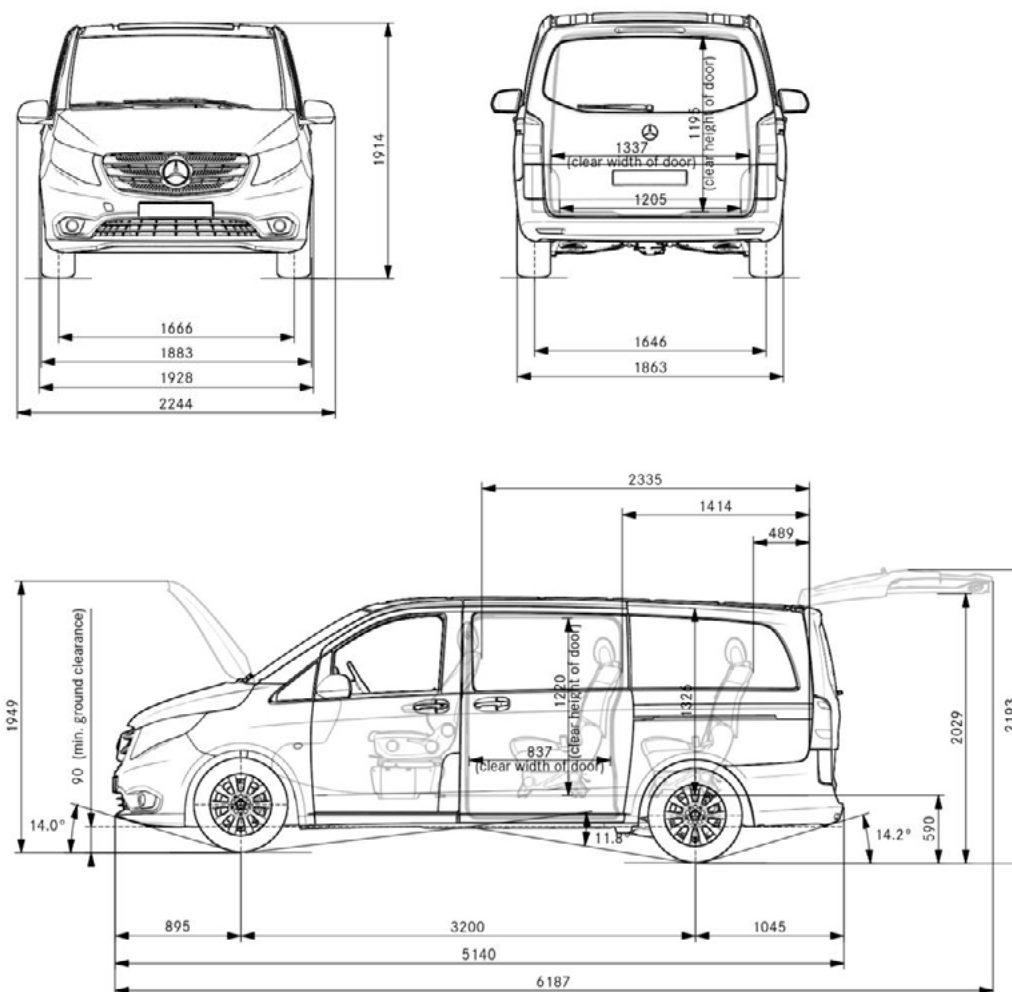
Wheelbase	Wheelbase length	3,200mm
	Turning circle	11.8m
	Track circle	11m
	Front track width	1,666mm
	Rear track width	1,646mm
Vehicle	Length	4,895mm
	Height (unladen)	1,910mm
	Width (inc. wing mirrors)	2,249mm
	Ground clearance	90-116mm
Load compartment	Length	2,408mm
	Max. width	1,552mm
	Width between wheel arches	1,205mm
	Height	1,297mm



Dimensions.

Vito Tourer L2

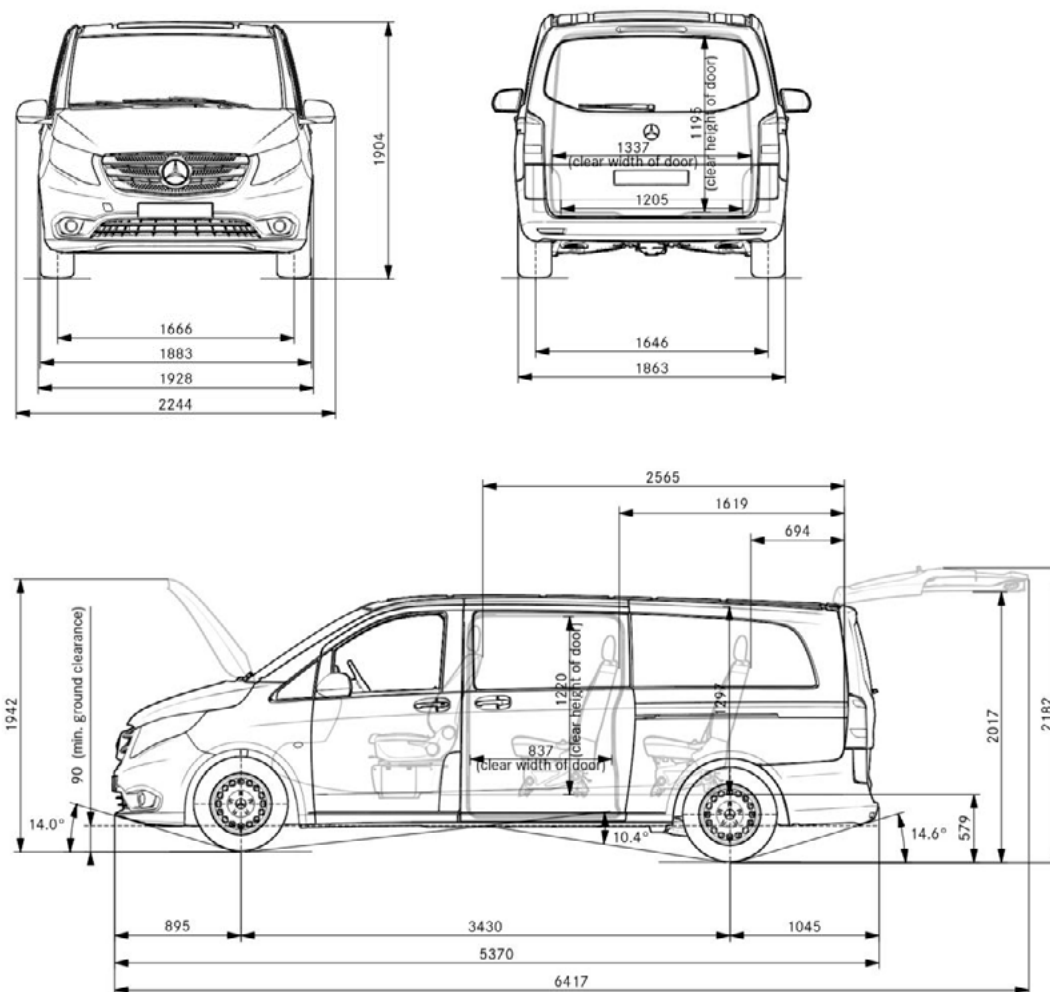
Wheelbase	Wheelbase length	3,200mm
	Turning circle	11.8m
	Track circle	11m
	Front track width	1,666mm
	Rear track width	1,646mm
Vehicle	Length	5,140mm
	Height (unladen)	1,910mm
	Width (inc. wing mirrors)	2,249mm
	Ground clearance	90-116mm
Load compartment	Length	2,653mm
	Max. width	1,552mm
	Width between wheel arches	1,205mm
	Height	1,297mm



Dimensions.

Vito Tourer L3

Wheelbase	Wheelbase length	3,430mm
	Turning circle	11.8m
	Track circle	11m
	Front track width	1,666mm
	Rear track width	1,646mm
Vehicle	Length	5,370mm
	Height (unladen)	1,910mm
	Width (inc. wing mirrors)	2,249mm
	Ground clearance	90-116mm
Load compartment	Length	2,883mm
	Max. width	1,552mm
	Width between wheel arches	1,205mm
	Height	1,297mm



List prices.

Model	Transmission	Basic Recommended Retail Price (Ex. VAT)	Basic Recommended Retail Price (Inc. VAT)
Tourer - PRO			
110 FWD Tourer L1	6-speed (manual)	£26,565	£31,878
114 FWD Tourer L1	6-speed (manual)	£29,060	£34,872
114 RWD Tourer L1	9G-TRONIC (auto)	£31,775	£38,130
110 FWD Tourer L2	6-speed (manual)	£26,980	£32,376
114 FWD Tourer L2	6-speed (manual)	£29,470	£35,364
114 RWD Tourer L2	9G-TRONIC (auto)	£32,190	£38,628
110 FWD Tourer L3	6-speed (manual)	£27,525	£33,030
114 FWD Tourer L3	6-speed (manual)	£30,925	£37,110
114 RWD Tourer L3	9G-TRONIC (auto)	£32,735	£39,282
Tourer - SELECT			
114 FWD Tourer L1	6-speed (manual)	£33,000	£39,600
114 RWD Tourer L1	9G-TRONIC (auto)	£34,815	£41,778
116 RWD Tourer L1	9G-TRONIC (auto)	£36,040	£43,248
119 RWD Tourer L1	9G-TRONIC (auto)	£38,300	£45,960
114 FWD Tourer L2	6-speed (manual)	£33,415	£40,098
114 RWD Tourer L2	9G-TRONIC (auto)	£35,220	£42,264
116 RWD Tourer L2	9G-TRONIC (auto)	£36,450	£43,740
119 RWD Tourer L2	9G-TRONIC (auto)	£38,710	£46,452
114 FWD Tourer L3	6-speed (manual)	£33,965	£40,758
114 RWD Tourer L3	9G-TRONIC (auto)	£35,775	£42,930
116 RWD Tourer L3	9G-TRONIC (auto)	£37,000	£44,400
119 RWD Tourer L3	9G-TRONIC (auto)	£39,260	£47,112
Tourer - SPORT			
116 RWD Tourer L1	9G-TRONIC (auto)	£42,235	£50,682
119 RWD Tourer L1	9G-TRONIC (auto)	£43,005	£51,606
116 RWD Tourer L2	9G-TRONIC (auto)	£42,365	£50,838
119 RWD Tourer L2	9G-TRONIC (auto)	£43,405	£52,086

This document is for guidance only and must be used in conjunction with a configuration tool prior to final specification decisions and vehicle quotations being prepared and accepted. List prices are quoted ex-factory unless otherwise stated. Delivery charges excluding VAT will be added to model prices quoted in this document. Prices based on standard finish paint choice. Mercedes-Benz Vans UK and authorised Dealers reserve the right to alter specification and vary prices without notice. The availability of options may depend on the chosen base vehicle and other optional equipment specified, and should be confirmed with your Mercedes-Benz Vans Dealer prior to order placement. VAT is calculated at the standard rate of 20%. Mercedes-Benz Vans UK Ltd, Tongwell, Milton Keynes, MK15 8BA.

Introducing Mercedes-Benz Approved Used Vans.

Know exactly what you're getting into.

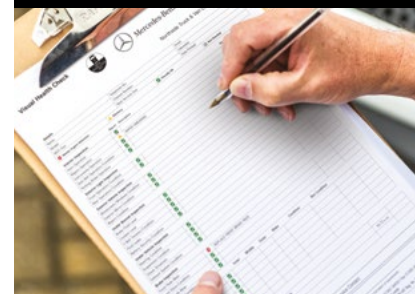
If you're looking for a used Vito Tourer that offers the same commitment to quality and workmanship as new, look no further than a Mercedes-Benz Approved Used Vito Tourer. Each Tourer has been rigorously inspected by Mercedes-Benz technicians and comes with the following assurances as standard:

- > Will be no older than 6 years
- > Less than 150,000 miles on the clock
- > Full service history
- > Minimum of 24-months' warranty
- > Minimum of 3mm tyre tread depth on all tyres
- > 12-month MOT
- > Mercedes-Benz Approved Used Vans Mechanical Breakdown Insurance
- > Free 24/7 MobiloVan roadside assistance*
- > Corrosion warranty renewal
- > 10 day exchange period
- > Complimentary 7-day insurance coverage.

Find your Approved Used Vito Tourer:

- > www.usedvans.mercedes-benz.co.uk/used-van-search/

* Terms and conditions apply



The Mercedes-Benz Vito Tourer 29

Finance options.

Get an agreement that suits you with Mercedes-Benz Finance.

At Mercedes-Benz Finance we have a number of finance options you can choose from to suit your business needs, because we understand the complexities of running a modern-day business...

Agility

A flexible method of financing a vehicle over a fixed term. The agreement defers your decision of whether you purchase, hand back or part-exchange your vehicle until the end of your agreement.

- Fixed regular payments mean you can easily budget
- Payments are based only on a proportion of the van's value, keeping your monthly payments lower
- Our Optional Purchase Payment avoids the risk of unplanned depreciation of your vehicle.

Hire Purchase

A straightforward route to ownership. This is the perfect way to buy a Mercedes-Benz if you want to work your way up to full ownership, spreading the overall cost over a fixed term.

- On completion of the agreement you will own the vehicle
- A flexible deposit and repayment term means you can tailor the financial agreement to suit you
- Monthly payments are not based on annual mileage.

Operating Lease

A solution for those who want to drive one of our vehicles over a fixed term, with lower monthly rentals and without the worries or commitment of ownership.

- Pay an advance rental upfront
- Rentals are based on your annual mileage agreed at the start of your agreement and only on a proportion of the vehicle's value, keeping your monthly payments lower
- Rentals are allowable against taxable profits (proportionally).

Contract Hire

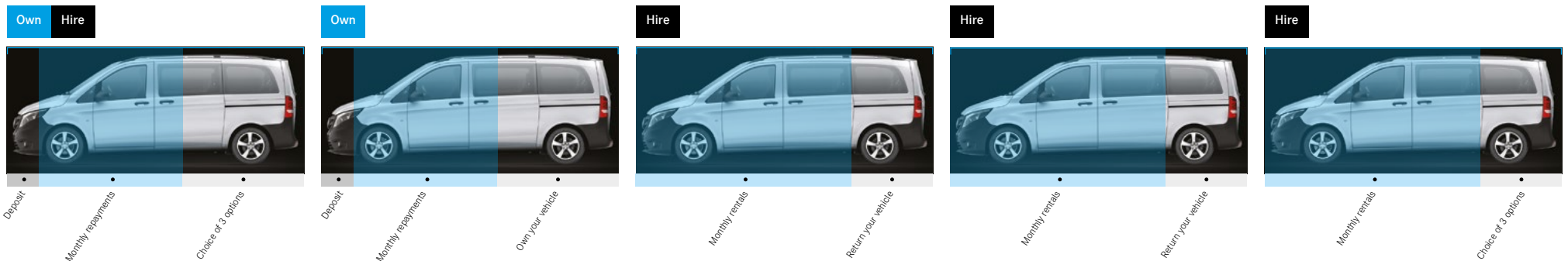
Gives you the ability to enjoy driving a Mercedes-Benz without having to take on full ownership. With Contract Hire, you lease your vehicle for a fixed period and for a fixed monthly rental.

- No need for a large initial deposit
- Repair and Maintenance options are also available
- VAT is reclaimable depending on usage (proportionally).

Finance Lease

Allows your vehicle to appear as an asset on your balance sheet, without the option of ownership as you hire a vehicle for a fixed period.

- Fixed regular payments enable you to easily budget
- The vehicle is an asset on the balance sheet, therefore tax allowances may be deducted from taxable profits
- Payments are not based on annual mileage.



➤ [For more information about our finance options](#)

After care.

Keeping Businesses Moving.

Once you've driven away in your new Vito Tourer, the support we provide doesn't stop there. Did you know we offer a number of ways to keep your business moving long into the future? It's perhaps one of our best kept secrets...

› ServiceCare

Because you don't stop, we don't either. We offer a range of servicing options to suit every business and to keep your vehicles on the road and running at their peak performance.

• ServiceCare Maintenance

Spread the cost of up to 6 services and save, without entering into a credit agreement. Pay one upfront sum or by monthly Direct Debit.

• ServiceCare Flex

Fix and reduce servicing costs for your van fleet by buying them in bulk. Specifically designed for fleets operating 25+ vehicles.

• ServiceCare Complete

Tailor a package that covers all your service and maintenance requirements and maintenance costs.

[Find out more about service and repairs](#)

› MobiloVan

All Mercedes-Benz Vans come with MobiloVan, our free roadside assistance 24/7, across Europe*. If you breakdown, have a collision or can't start your van, call MobiloVan and a technician with an average response time of under 60 minutes will arrive in a van stocked with Mercedes-Benz GenuineParts. With an average roadside repair rate of 80%, you'll be moving again in no time.

[Find out more about MobiloVan](#)

› 3 year warranty

Because we want to help keep businesses moving today and in the future, all our new and Approved Used vans come with a free 3 year unlimited mileage warranty.

[Find out more about warranties](#)

› 24/7 Dealer network

Our nationwide network of approved Dealers is here to help your business maintain momentum. Most Dealers work until midnight and over a third are open 24/7.

[Find out more about our Dealer network](#)

*For a full list of exclusions and all product terms please visit mbvans.co.uk/mobilovan.

