



Ranger



At Ford, with such a long and successful motoring heritage behind us, we understand that everyone's lifestyle is different. What you look for in a vehicle will be different from the next person. It could be a vehicle that allows you to fit in all the family and hit the open road for the weekend, a zippy urban car that's perfect for tackling city traffic, or maybe you need a vehicle that allows you to play as hard as you work. We'd like to think that our family of vehicles is proof that Ford never stops looking forward, designing and engineering vehicles that catch your eye, are technologically advanced, consider the environment and help keep you safe. In short, no matter what your lifestyle, you're sure to find a Ford that can help you live more of your life.



Irresistible Design:

Because everyone's idea of the perfect car is different, Ford has designed and engineered a family of exciting, athletic and sleek vehicles that look great inside and out.



Great to sit in, great to drive:

There's nothing quite like driving a Ford. That's because every Ford is built from the ground up to be exhilarating to drive, with high levels of interior comfort along with the very latest safety systems that help keep you in control and protect you and your passengers.



Sustainability:

Ford recognises that climate change is a significant global challenge. We have an ongoing commitment to caring for the environment in every facet of our business, including delivering alternative fuel solutions such as diesel and LPG.



Innovation and Technology:

Thinking smarter means a comfortable, safe and enjoyable drive every time you turn the key. Our innovative solutions to everyday tasks using the latest technology save you time and connect you to the digital world.



Built to Last:

Every Ford is built not just for today but for tomorrow as well. So, when you buy a Ford you enjoy the type of quality that you can rely on, day in day out. Not just the look and feel, but the way it performs and the way it lasts.



Talk about getting the job done “quick smart.” From day one, the Ford Ranger has established its credentials and quickly earned a reputation for hard work. Why wouldn't it? The Ranger is the latest in a long line of tough Ford trucks. Boasting impressive looks, the Ranger is better, tougher and more versatile than ever before, and there is a range of engines that are more than powerful enough to handle the toughest jobs you've got going. Leading the way is the awesome Ranger Wildtrak which is equally at home taking a client to the worksite as it is loading up the family for a weekend away camping. Go beyond Ranger's rugged exterior and you'll find an interior that is just as luxurious as a family sedan, and just as easy to drive.



Ranger

Wildtrak.

The awesome Ranger Wildtrak puts an exciting sports edge to a legendary workhorse truck.

Want a truck that is also loaded up with the kind of features that let you enjoy life 'after work'? Or maybe you're after a sportier looking truck that's rugged enough to handle a hard day's work. Either way, there's one simple answer. Wildtrak. As its name suggests, the Ford Ranger Wildtrak adds a real sporting edge to some established tough truck credentials and gives you what you need to tackle the wilder side of life.

The best of both worlds, and more.



Legendary versatility.

The Ranger was designed for more than just hard work. You'll discover that when the day is over 'play time' begins and a whole world of possibilities opens up.

Gone are the days when a truck was all work and no play. You'll quickly find one of the Ranger's best features is its versatility, because regardless of whether you're loading up the dirt bikes or packing up the family and the camping gear to enjoy the great outdoors for the weekend, Ranger has what it takes to tackle the big weekend with as much gusto as a hard day's work.



Ranger 4x4 XLT Crew Cab Pick-up shown in Titanium Grey.

Genuine 4x4 credentials.

The Ranger lets you get on with the job at hand no matter how tough the terrain gets.

It's always good to know the moment things get rough underfoot you're not compromised by your vehicle's off-road capabilities. It's the reason why Ranger, with its high & low range gearbox, limited slip differential and shift on the fly capabilities, packs genuine 4x4 credentials. So when work takes you to some tough terrain or you are heading for that fishing spot in the bush, the Ford Ranger won't let you down. What's more, the Ranger's rugged exterior is well supported by tough and durable suspension that has been designed specifically for Australian conditions.



4x4 shift on the fly.

Shifting from two wheel drive to four wheel drive is as simple as a flick of the wrist with optional automatic transmission on selected models.



Ranger 4x4 XLT Super Cab Pick-up shown in Silver Metallic.



Tough to beat.

Ranger is one business tool that can handle just about anything the worksite dishes up.

Business can be tough and that's why you need a truck that's up to the job. While the muscular bold lines, sure footed stance and a host of stand-out exterior features such as the 3-bar grille and the aggressive power bulge in the bonnet tells you Ranger means business, the sedan-like interior means your clients or workmates travel in genuine comfort. Under the hood the hard working truck credentials are equally impressive. While boasting an abundance of power, the Ranger's turbo diesel engines help drive down your fuel costs and that's always good for business.

Ranger 4x4 XL Crew Cab shown in Red.

Play time.

Ranger delivers all the power you need to make the most of every minute away from work.

It's true to say that when it comes to trucks, a proud history counts for plenty, and the Ranger more than deserves to wear the Ford badge. The moment you lay eyes on the Ranger you know it loves hard work, however it's also good to know that when it comes time for some well-earned R&R, like hooking up the boat for a fishing trip, it's equally up to the job. Leading the way is the 3.0L high pressure common rail turbo diesel. It delivers 115kW of power at 3200rpm and a whopping 380Nm of torque at only 1800rpm, while fuel economy comes in at 9.5L/100km.* The 2.5L diesel gives even better fuel economy at just 8.5L/100km,* yet you'll still have 330Nm of torque at 1800rpm.



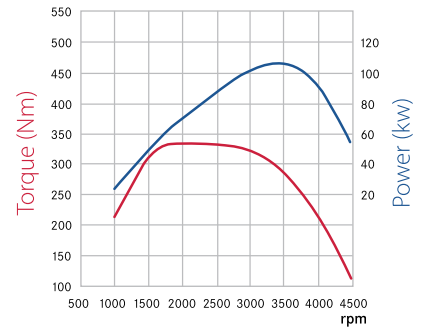
Duratorq common rail TDCi turbo diesel engine.

The Ford Duratorq engine provides a perfect combination of power, torque and fuel economy to offer superb performance and a car-like drive. The common-rail direct injection diesel engine with variable geometry turbocharger produces high levels of torque throughout the rev range, but is still outstandingly quiet for a great driving experience and a smooth and powerful ride.

*Figures obtained from controlled tests using ADR81/02 (combined). Actual fuel consumption will depend on many factors including driving habits, prevailing conditions and your vehicle's equipment, condition and use.

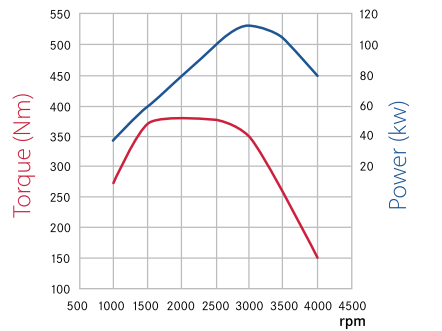


Ranger 4x4 XLT Crew Cab Pick-up shown in Black Mica.



2.5 litre TDCi

Maximum power: 105kW @ 3500 rpm
Maximum torque: 330Nm @ 1800 rpm



3.0 litre TDCi

Maximum power: 115kW @ 3200 rpm
Maximum torque: 380Nm @ 1800 rpm

A reliable workforce.

Regardless of how hard the task at hand is, Ranger is the trusted worker that every business can rely on.

With a 1 tonne payload across the range and the grunt to tow massive loads, Ranger has really earned its legendary reputation. Look at the facts and you appreciate that whatever you dish up to the Ranger it'll just keep on coming back for more. With payloads of up to 1383kg*, a 2.25 tonne towing capacity on 2.5L models and a huge 3 tonne towing capacity^ on 3.0L manuals, Ranger will be able to move just about anything. While boasting an abundance of pulling power, the Ranger's turbo diesel engines are also smart. The high pressure common rail diesel platform gives you excellent fuel economy, and direct injection technology means loads of torque and powerful acceleration throughout the rev range, under all manner of load and towing conditions.



Thanks to a hefty payload that exceeds one tonne right across the range, massive loads are no problem.

Genuine Ford towpack makes towing a breeze, whether it's for work or a weekend trip.

*XL Single Cab Chassis models only. ^Available on 3.0L manual models only, when fitted with a Genuine Ford heavy duty towpack and load levelling kit. Subject to State and Territory regulations.



From left to right: Ranger 4x2 XL Single Cab Chassis shown in Cool White with optional aluminium tray, Ranger 4x2 XLT Crew Cab Pick-up Hi-Rider shown in Titanium Grey, Ranger 4x4 XL Super Cab Pick-up shown in Red.



Ranger 4x2 XLT Crew Cab Pick-up Hi-Rider shown in Highland Green.

Ranger Hi-Rider.

When the terrain gets a whole lot tougher you can depend on the Ranger Hi-Rider to get the job done.

Leave the bitumen at a worksite or decide to make an unscheduled detour off the beaten track and you could find yourself in trouble negotiating the terrain when it becomes more challenging. If you need extra ground clearance but don't want the extra cost of a 4X4, you can't go past the 4x2 Ranger Hi-Rider. You'll still enjoy all the hard working truck benefits that Ranger is renowned for, as well as being able to take all manner of rugged terrain in your stride.

XL Crew Cab Pick-up



XL Crew Cab Pick-up Hi-Rider



With additional ground clearance as well as increased approach and departure angles, the Ranger Hi-Rider model handles tough terrain with ease.

	XL Crew Cab Pick-up	XL Crew Cab Pick-up Hi-Rider
A. Approach angle (degrees)	24	34
B. Ramp breakover angle (degrees)	21	28
C. Departure angle (degrees)*	19	26
Ground Clearance (mm)	181	207

*Departure angle is measured at tailpipe for Cab Chassis and at rear bumper for Pick-up

A very business-like interior.

There's no place like the interior of the Ranger to make work as comfortable as possible.

With such legendary levels of comfort, the Ranger is the smart way to work. It starts the moment you get behind the wheel with ergonomically designed seats to make every journey more comfortable. The stylish instrument panel design, including the multi-meter cluster on the Wildtrak, short throw gearshift and a host of convenient and clever storage solutions, such as the slide-out tray above the glove compartment add to the package. Plus, to give you a hand when Ranger doubles as an office there are two 12-volt DC accessory sockets that enable you to charge your mobile phone* and run your lap top computer.* Add it all up and it's easy to see that nothing improves working conditions like a Ranger.



Super Cab Models.

The Super Cab Rear Access System, which features 2 rear hinged doors, provides easy access to the rear compartment for passengers as well as a safe storage area for valuable items such as tool boxes.

*Requires connection cable, sold separately.



Ranger 4x4 XLT Crew Cab Pick-up interior shown.

Car-like interior.

The impressive list of car-like features means that in a Ranger getting to and from work has never been so comfortable.

Slide behind the wheel and you quickly realise that when you travel in the Ranger everybody gets to ride in genuine comfort. While the Ranger is tough on the outside, the inside is another story altogether. The spacious cabin looks and feels just like a family sedan, and the ride is just as smooth. Plus the obvious quality and craftsmanship that has gone into all the interior finishes will take you by surprise. What's more, power windows, power side mirrors, central locking, engine immobiliser and remote keyless entry are all standard across the range. Add to this an entertainment system featuring a powerful stereo with MP3 compatible CD player and 6-disc CD capacity on Wildtrak and XLT models and you have a complete package that's tough to beat.



Ranger 4x4 XLT Crew Cab Pick-up with optional automatic transmission shown.



Convenient Storage.

Ranger provides a host of convenient storage options.



Keyless entry.

The safety and security of keyless entry with central locking and engine immobiliser is standard across the range.



Storage tray.

A convenient slide-out tray that can support a hefty 10kg.



Power window control switches.

Power windows and mirrors on every Ranger.

SAFETY

Amongst the safest in its class.

Whether it happens to be work or play, you can rest assured that Ranger is looking after you and your passengers.

Ranger's high levels of safety start with a superior body construction that is designed to disperse crash forces away from the vehicle's occupants. And on the Super Cab model, the front door and rear access panel close to form a virtual B-Pillar, which is far stronger than the conventional B-Pillar. Driver and front passenger airbags are now standard across the range while front side head/thorax airbags are now standard on XLT and Wildtrak models. (Front Side Airbags are available as part of the optional safety pack on XL Super and Crew Cab models). Add to that, four wheel ABS with Electronic Brakeforce Distribution (EBD),[^] load-sensing seatbelt pretensioners and an optional bull bar that is fully airbag compatible. Rest assured, whether you're loaded up with workmates or the family, Ranger doesn't compromise when it comes to safety.



1 Safety Cell.
Ranger's safety cell construction will help to protect you in the event of an accident. With a body structure that satisfies stringent European collision-safety standards, tough side impact beams and a virtual B-pillar on Super Cab models, Ranger is designed to disperse crash forces away from the vehicle's occupants.

2 Driver and front passenger airbags.
Standard on all Rangers are driver and front passenger airbags that activate in milliseconds to protect you in a frontal collision. What's more, front side head/thorax airbags are standard on XLT and Wildtrak models and are available as part of the optional Safety Pack on XL Super and Crew Cab models.

3 Keyless entry
Remote keyless entry with 2 key fobs and central locking is standard on all Ranger models, providing security, convenience and peace of mind.

4 Engine immobiliser
Standard on all models, the electronic engine immobiliser provides high security protection for your Ranger. In addition, an anti-theft alarm system is standard on XLT and Wildtrak models providing extra security for your Ranger.

5 Anti-lock Braking System*
Anti-lock Braking System (ABS) prevents wheel lockup during hard braking, even on slippery surfaces, aiding the driver's ability to steer away from hazards. Electronic Brakeforce Distribution (EBD) optimises the distribution of braking force to the front and rear wheels helping to provide safe, effective braking and shorter stopping distances.

[^]Available in optional safety pack on Super and Crew Cab XL models. Standard on XLT

Ranger 4x4 XLT Super Cab Pick-up shown in Silver Metallic.

*Standard on XLT and Wildtrak. Optional on XL Single Cab models and available as part of optional Safety Pack on XL Super and Crew Cab models.

RANGE

The Ranger range.

Working hard, playing hard, or both, the extensive and versatile selection of models means there's a Ranger that's just right for your needs.

Ranger really spoils you for choice. All up there are 17 models available and leading the way is the awesome Wildtrak. On the outside Wildtrak boasts some serious style with 18" alloy wheels, unique sports bar and box rails, roof rails and a roller shutter. There's also an integrated bedliner and a handy 12-volt power socket. The Wildtrak breaks new ground on the inside, too. A truly luxurious Alcantara leather interior package complements a range of features including a leather-wrapped steering wheel, a generous sliding tray that can double as a work table for a laptop and the multi-meter which sits atop the console and displays inside/outside temperature, angle of vehicle tilt and a compass.



Wildtrak Crew Cab Pick-up

4x2 Models



XL Single Cab Chassis



XL Single Cab Chassis Hi-Rider



XL Single Cab Pick-up



XL Super Cab Chassis Hi-Rider



XL Super Pick-up Hi-Rider



XL Crew Cab Chassis Hi-Rider



XL Crew Cab Pick-up



XL Crew Cab Pick-up Hi-Rider



XLT Crew Cab Pick-up Hi-Rider

4x4 Models



XL Single Cab Chassis



XL Super Cab Chassis



XL Super Cab Pick-up



XL Crew Cab Chassis



XL Crew Cab Pick-up



XLT Super Cab Pick-up



XLT Crew Cab Pick-up



Wildtrak Crew Cab Pick-up



Exterior colours.



Cool White



Silver Metallic



Red



Desert Bronze



Titanium Grey



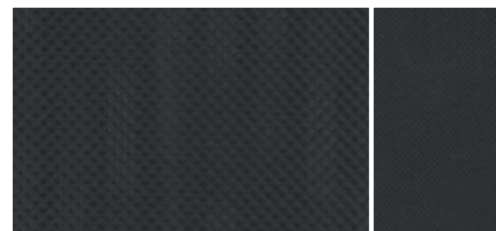
Highland Green



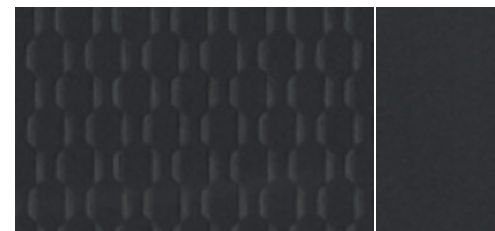
Winning Blue



Black Mica



Network/Crosswise



Cascade/Rockpool



Alcantara/Leather

EXTERIOR COLOUR AVAILABILITY			
MODEL	XL	XLT	WILDTRAK
STANDARD PAINTS			
Cool White	✓	✓	✓
Red	✓	✓	-
PRESTIGE PAINTS			
Desert Bronze	✓	✓	-
Black Mica	✓	✓	✓
Silver Metallic	✓	✓	✓
Titanium Grey	✓	✓	-
Winning Blue	✓	✓	✓
Highland Green	✓	✓	-

EXTERIOR PAINT / SEAT TRIM COLOUR COMBINATIONS			
MODEL	XL	XLT	WILDTRAK
EXTERIOR PAINT/ SEAT TRIM	Dark Grey Cloth	Sports Weave	Alcantara leather
INSERT/BOLSTER	Network/Crosswise	Cascade/Rockpool	Alcantara/Leather
Cool White	✓	✓	✓
Red	✓	✓	-
Desert Bronze	✓	✓	-
Black Mica	✓	✓	✓
Silver Metallic	✓	✓	✓
Titanium Grey	✓	✓	-
Winning Blue	✓	✓	✓
Highland Green	✓	✓	-

✓ - Available. -- Not available.

Personalise your Ranger. The choice is yours.

You'll quickly discover that the Ford Vehicle Personalisation accessory range lets you personalise your Ranger to perfectly suit your needs, whether it's practical and functional items to enable you to work smarter, accessories to meet the needs of your active lifestyle or sporty extras to make your Ranger stand out from the crowd, all of these accessories are available from your Ford Dealer. For full details and to view the complete Ranger accessory range visit ford.com.au



Heavy duty rubber floor mats. Designed with a raised outer lip to help retain dirt and sand, these heavy duty floor mats will help protect your vehicle's interior.



EGR 3-piece Hard Tonneau. Helps to keep your valuable equipment and tools secure. Lightweight and impact resistant, manufactured in rugged and durable PC/ABS material. Features a single point push button system for easy locking.



Scuff plates. Enhance your vehicle's appearance and help protect the doorstep from scratches and scuffs. Made from stainless steel.



Towpack. Genuine Ford towpack makes towing a breeze, whether it's for work or a weekend trip.



Sports bar. Made from strong, polished stainless steel, the sports bar will enhance the look of your Ranger.
Soft tonneau. Helps protect equipment and valuables from rain and dust. Features elasticised bungee looping and a steel tonneau bow to assist with water run-off.



Bedliner. Helps to protect rear cargo area and minimise movement of gear during transit. Optional 12V auxiliary power socket located in the Pick-up box area allows you to run compatible fridges and other equipment.



Snorkel. Moulded from high quality UV resistant polyethylene, this snorkel provides cooler and cleaner air to the engine, especially in dusty conditions, and a higher air intake position to assist with water crossings. Available on 3.0L models only.



Bull bar. Developed specifically for the Ford Ranger, this bull bar is designed to fully integrate with the vehicle's airbag system and is available on 3.0L models to help protect the front end of your vehicle in the case of an accident.



Mullins 16" Alloy Wheels. Give your Ford Ranger an even sportier edge with these eye-catching wheels.

OPTIONS AND ACCESSORIES AVAILABILITY BY MODEL

	XL	XLT	WILDTRAK
EXTERIOR STYLING			
Sports bar with high mounted stop light ^{1,6}	A	S	-
16" Alloy wheels ²	A	A	-
Mullins B-LOC 15" alloy wheels ^{2,3,4}	A	A	A
Mullins B-LOC 16" alloy wheels ^{2,3,4}	A	A	A
Mullins Magnum 15" alloy wheels ^{2,3,4}	A	A	A
Mullins Magnum 16" alloy wheels ^{2,3,4}	A	A	A
Mullins Stampede Anthracite 15" alloy wheels ^{2,3,4}	A	A	A
Mullins Stampede Anthracite 16" alloy wheels ^{2,3,4}	A	A	A
Mullins Stampede Silver 15" alloy wheels ^{2,3,4}	A	A	A
Mullins Stampede Silver 16" alloy wheels ^{2,3,4}	A	A	A
Mullins SUBB RV 16" alloy wheels ^{2,3,4}	A	A	A
Mullins SUBB RV Chrome 16" alloy wheels ^{2,3,4}	A	A	A
EXTERIOR PROTECTION			
Side steps ⁵	A	S	S
Bonnet protector	A	A	A
Soft tonneau cover ⁶	A	A	-
EGR 1-piece hard tonneau cover ^{3,7}	A	-	-
EGR 3-piece hard tonneau cover (for sports bar) ^{3,7}	-	A	-
Spare wheel lock	A	A	-
Weathershields ⁸	A	A	A
TOWING AND CARRYING			
Bedliner	A	S	S
Towpack - standard 1,800kg ⁹	A	A	A
Towpack - heavy duty 2,250kg (including load levelling kit) ⁹	A	A	A
Towpack - heavy duty 3,000kg (including load levelling kit) ^{9,10}	A	A	A
INTERIOR STYLING			
Scuff plate inserts ¹¹	A	A	S
Centre console lid - leather	A	A	A
INTERIOR COMFORTS AND STORAGE			
Carpet mats ¹¹	A	A	S
Rubber floor mats	A	A	A
Heavy duty rubber mats ¹¹	A	A	A
IN CAR ELECTRICAL AND ENTERTAINMENT			
Bluetooth® phone kit ¹²	A	A	A
Auxiliary power socket (for bedliner) 12V ¹	A	S	S

A - Offered as an accessory. S - Feature standard on this model. -- Feature not available on this model

1. Available only when vehicle is fitted with Genuine Ford bedliner (sold separately). 2. Wheels and tyres sold separately. 3. This accessory is a Supplier Branded Accessory and is not manufactured or warranted by Ford. The warranty is provided by the manufacturer of the accessory. Contact your authorised Ford Dealer for details of the manufacturer's warranty applicable to this accessory. 4. It is recommended that tyres matching original equipment specification be fitted to Mullins wheels. 5. Available on Super and Crew Cab Pick-up HI-Rider models only. 6. Available on Super and Crew Cab Pick-up models only. 7. Available on Crew Cab models only. 8. Left and right front weathershields sold separately. 9. Subject to State and Territory regulations. Genuine Ford towpacks include towbar, towball, and trailer wiring. 10. 3,000kg maximum towing capacity available on 3.0L manual models only. Towing capacity 2,500kg on 3.0L XL, XLT and Wildtrak with automatic transmission. 11. Available on Super and Crew Cab models only. 12. Bluetooth® is a registered trademark of Bluetooth SIG Inc., and is used under license.

MECHANICAL SPECIFICATIONS.

ENGINE	2.5L TDCi (TURBO DIESEL)		3.0L TDCi (TURBO DIESEL)	
Engine type	4 Cyl DOHC		4 Cyl DOHC	
Engine size (cc)	2499		2953	
Compression ratio	18.0:1		18.0:1	
Maximum power (EEC)	105kW @ 3500rpm		115kW @ 3200rpm	
Maximum torque (EEC)	330Nm @ 1800rpm		380Nm @ 1800rpm	
No. of valves	16		16	
Bore x stroke	93 x 92mm		96 x 102mm	
Fuel management system	Advanced high pressure common-rail direct-injection fuel management system			
TRANSMISSION RATIOS	5-SPEED MANUAL	5-SPEED AUTO	5-SPEED MANUAL	5-SPEED AUTO
1st	4.294	3.220	4.294	3.220
2nd	2.413	2.290	2.413	2.290
3rd	1.491	1.550	1.491	1.550
4th	1.000	1.000	1.000	1.000
5th	0.800	0.710	0.800	0.710
Reverse	3.391	3.070	3.391	3.070
4x4 transfer case ratios	-		Low: 2.020	Low: 2.480
	-		High: 1.000	High: 1.000
DIFFERENTIAL				
Final drive ratio	3.416:1		3.727:1	
FUEL				
Fuel tank capacity (L)	63		70	
Fuel consumption (L/100km) ¹	8.5	9.9	9.5	10.2
CO ₂ emissions (grams/km) ¹	225	263	251	271
ELECTRICAL/CLUTCH				
Battery (type)	95D31R		95D31R	
Alternator	12V - 70 Amp		12V - 70 Amp	
Clutch type (manual transmission only)	Hydraulic, single dry plate with diaphragm spring		Hydraulic, single dry plate with diaphragm spring	
Clutch dimensions (manual transmission only)	250 x 155mm		250 x 155mm	
TOWING CAPACITY				
Braked ^{2,4}	2250kg		3000kg	2500kg
Unbraked ^{3,4}	750kg		750kg	750kg

1. Figures obtained from controlled tests using ADR 81/02 (combined). Actual fuel consumption will depend on many factors including driving habits, prevailing conditions and your vehicle's equipment, condition and use. 2. When fitted with a Genuine Ford heavy duty towpack and load levelling kit. Subject to State and Territory regulations. 3. When fitted with a Genuine Ford towpack. Subject to State and Territory regulations. 4. The weight of the vehicle must not exceed the Gross Vehicle Mass (GVM). The combined weight of the fully loaded vehicle and trailer must not exceed the Gross Combination Mass (GCM). Maximum individual axle loads must not be exceeded. Towball download must not exceed 10% of the towed weight. Towball download must not exceed 250kg.

SPECIFICATIONS AND OPTIONS. For full specifications and options visit ford.com.au

CABSTYLE	4X2										4X4									
	SINGLE			SUPER			CREW				SINGLE	SUPER			CREW				WILDTRAK	
	C/C	C/C HR	P/U	C/C HR	P/U HR	C/C HR	P/U	P/U HR	P/U HR	XL		C/C	C/C	P/U	P/U	XL	P/U	P/U		P/U
SERIES	XL			XL			XL				XL	XL			XL					
BODYSTYLE	C/C	C/C HR	P/U	C/C HR	P/U HR	C/C HR	P/U	P/U HR	P/U HR	P/U HR	C/C	C/C	P/U	P/U	C/C	P/U	P/U	P/U		
MECHANICAL																				
2.5L TDCi																				
5-speed manual transmission	S	-	S	-	-	-	-	-	-	-	-	-	-	-	-	-	-	-	-	
5-speed automatic transmission	-	-	-	O ⁵	-	-	-	S	-	-	-	-	-	-	-	-	-	-	-	
3.0L TDCi																				
5-speed manual transmission	-	S	-	-	S	S	-	S	-	S	-	S	-	S	-	S	-	S	-	
5-speed automatic transmission	-	-	-	-	-	-	-	O	-	O	-	O ⁶	-	-	-	O	-	O	-	
VEHICLE MASSES (kg)																				
Gross Vehicle Mass ⁷	2870	2842	2790	2810	2917	2917	2914	2853	2894	2914	2894	2914	3037	2967	3032	3032	3032	3042	3009	3019
Kerb mass (maximum)	1487	1535	1627	1641	1626	1745	1685	1739	1780	1800	1868	1888	1654	1666	1747	1866	1957	1967	1786	1796
Payload (maximum) ⁸	1383 ⁹	1307	1163	1169	1291	1172	1229	1114	1114	1114	1026	1026	1383 ⁹	1301	1285	1166	1075	1075	1223	1223
Front axle load (maximum)	1170	1430	1170	1170	1430	1430	1430	1170	1430	1430	1430	1430	1430	1430	1430	1430	1430	1430	1430	1430
Rear axle load (maximum)	1860	1850	1860	1860	1850	1850	1850	1860	1850	1850	1850	1850	1850	1850	1850	1850	1850	1850	1850	1850
Gross Combination Mass ¹⁰	5100	5500	5100	5100	5500	5500	4875	5100	5500	4875	5500	4875	5500	4875	5500	5500	4875	5500	4875	5500
EXTERIOR DIMENSIONS (mm)¹¹																				
Overall length	4848	4848	5173	4848	5173	4848	5173	5173	5173	5179	4848	4848	5173	5179	4848	5173	5179	5179	4848	5179
Overall width ¹²	1715	1788	1715	1788	1788	1788	1715	1788	1788	1788	1788	1788	1788	1788	1788	1788	1788	1788	1788	1788
Overall height	1622	1743	1622	1743	1743	1755	1630	1755	1755	1762	1743	1743	1750	1755	1755	1762	1762	1755	1755	1762
Wheelbase	2985	3000	2985	3000	3000	3000	2985	3000	3000	3000	3000	3000	3000	3000	3000	3000	3000	3000	3000	3000
Front track	1445	1445	1445	1445	1445	1445	1445	1445	1445	1475	1445	1445	1445	1475	1445	1445	1475	1445	1445	1485
Rear track	1450	1440	1450	1440	1440	1440	1450	1440	1440	1470	1440	1440	1440	1470	1440	1440	1470	1440	1440	1480
Front overhang	888	888	888	888	888	888	888	888	888	888	888	888	888	888	888	888	888	888	888	888
Rear overhang	-	-	1300	-	1285	-	1300	1285	1291	-	-	-	1285	1291	-	1285	1291	-	1285	1291
Ground clearance	181	207	181	207	207	207	181	207	214	207	207	207	214	207	207	214	214	207	207	214
Wading depth	400	750	400	750	750	750	400	750	750	750	750	750	750	750	750	750	750	750	750	750
Approach angle (degrees)	24	34	24	34	34	34	24	34	34	34	34	34	34	34	34	34	34	34	34	34
Departure angle (degrees) ¹³	23	33	19	33	26	33	19	26	15	33	33	26	15	33	26	15	33	26	15	15
Ramp breaker angle (degrees)	21	28	21	28	28	28	21	28	28	28	28	28	28	28	28	28	28	28	28	28
INTERIOR DIMENSIONS (mm)																				
Front headroom	-	1012	-	1012	-	1012	-	1012	-	1012	-	1012	-	1012	-	1012	-	1012	-	1012
Rear headroom	-	-	-	937	-	937	-	937	-	937	-	937	-	937	-	937	-	937	-	937
Front legroom (maximum)	-	1049	-	1068	-	1068	-	1068	-	1068	-	1068	-	1068	-	1068	-	1068	-	1068
Rear legroom (minimum)	-	-	-	789	-	789	-	831	-	831	-	831	-	789	-	789	-	831	-	831
Front shoulder room	-	1405	-	1405	-	1405	-	1405	-	1405	-	1405	-	1405	-	1405	-	1405	-	1405
Rear shoulder room	-	-	-	1405	-	1405	-	1409	-	1409	-	1409	-	1405	-	1405	-	1405	-	1409
PICK-UP BOX DIMENSIONS (mm)																				
Load length - at floor	-	2280	-	1753	-	1753	-	1530	-	1530	-	2280	-	1753	-	1753	-	1530	-	1530
Load width - at floor	-	1456	-	1456	-	1456	-	1456	-	1456	-	1456	-	1456	-	1456	-	1456	-	1456
Load width - at top	-	1459	-	1459	-	1459	-	1459	-	1459	-	1459	-	1459	-	1459	-	1459	-	1459
Load width - between wheelhouses	-	1090	-	1090	-	1090	-	1090	-	1090	-	1090	-	1090	-	1090	-	1090	-	1090
Load height - at floor	-	465	-	465	-	465	-	465	-	465	-	465	-	465	-	465	-	465	-	465
Width of rear opening	-	1328	-	1328	-	1328	-	1328	-	1328	-	1328	-	1328	-	1328	-	1328	-	1328
RIDE AND HANDLING																				
Fully independent double wishbone front suspension	S	S	S	S	S	S	S	S	S	S	S	S	S	S	S	S	S	S	S	S
Dual rate semi-elliptic leaf spring rear suspension	S	S	S	S	S	S	S	S	S	S	S	S	S	S	S	S	S	S	S	S
Front ventilated disc brakes	S	S	S	S	S	S	S	S	S	S	S	S	S	S	S	S	S	S	S	S
Power steering (RPM sensitive)	S	S	S	S	S	S	S	S	S	S	S	S	S	S	S	S	S	S	S	S
Turning circle - kerb-to-kerb (m)	12.0	12.6	12.0	12.6	12.6	12.6	12.0	12.6	12.6	12.6	12.6	12.6	12.6	12.6	12.6	12.6	12.6	12.6	12.6	13.0
15" x 6.5" steel wheel with 215/70R15 tyres ¹⁴	S	-	S	-	-	-	S	-	-	-	-	-	-	-	-	-	-	-	-	-
15" x 6.5" styled steel wheel with 235/75R15 tyres ¹⁵	-	S	-	S	S	S	-	S	-	S	S	S	S	S	S	S	S	S	S	S
16" x 7.0" alloy wheel with 245/70R16 tyres ¹⁵	-	-	-	-	-	-	-	-	-	S	-	-	-	S	-	-	-	-	-	-
18" x 7.5" alloy wheel with 255/60R18 tyres ¹⁴	-	-	-	-	-	-	-	-	-	-	-	-	-	-	-	-	-	-	-	S
Limited Slip Differential (LSD)	-	S	-	S	S	S	-	S	-	S	S	S	S	S	S	S	S	S	S	S
4X4 Shift on the fly	-	-	-	-	-	-	-	-	-	-	S	S	S	S	S	S	S	S	S	S
Electronic remote front wheel hub lock	-	-	-	-	-	-	-	-	-	-	S	S	S	S	S	S	S	S	S	S
2W-4WH-4WL selector switch ¹⁶	-	-	-	-	-	-	-	-	-	-	O	-	-	O	-	O	-	O	-	O

HR - High Rider. C/C - Cab Chassis. P/U - Pick-up. S - Standard. O - Options that can be ordered before a vehicle is manufactured. A - Accessory that can be added at any time. NCO - No cost option.

5. Automatic transmission available on 4x2 XL Single Cab Pick-Up from May 2010 production. 6. Air conditioning is mandatory with optional bucket seats and/or optional automatic transmission (where available). 7. Gross Vehicle Mass (GVM) is defined as the sum of the kerb mass and the payload. 8. Payload is defined as the maximum combined value of occupants/cargo/added options/added structures/towball download (when towing). 9. Payload is reduced by 82kg when bucket seats are fitted. 10. Includes braked trailer. 11. Cab Chassis dimensions with optional factory fitted tray (where available). 12. Excludes exterior side mirrors. 13. Departure angle is measured at tailpipe for Cab Chassis and at rear bumper for Pick-Up. 14. Set of five. 15. Set of four. 16. With optional automatic transmission.

CABSTYLE	4X2									4X4							
	SINGLE			SUPER		CREW				SINGLE	SUPER			CREW			
	SERIES	XL		XL		XL		XLT	XL		XL		XLT	XL		XLT	WILDTRAK
C/C		C/C HR	P/U	C/C HR	P/U HR	C/C HR	P/U			P/U HR	P/U HR	C/C		C/C	P/U		
EXTERIOR																	
Body colour rear step bumper	-	-	S	-	S	-	S	S	-	-	-	S	-	-	S	-	
Stainless steel rear step bumper	-	-	-	-	-	-	-	-	S	-	-	-	S	-	-	S	
Painted wheel arch flares with integrated mud flaps	-	-	-	-	-	-	-	-	S	-	-	S	-	-	S	S	
Black moulded wheel arch flares with integrated mud flaps	-	S ¹⁷	-	S ¹⁷	S	S ¹⁷	-	S	-	S ¹⁷	S ¹⁷	S	-	S ¹⁷	S	-	
Mud flaps	S ¹⁷	-	S	-	-	-	S	-	-	-	-	-	-	-	-	-	
4-door Dual Rear Access System	-	-	-	S	S	-	-	-	-	-	S	S	S	-	-	-	
Front fog lamps	-	-	-	-	-	-	-	-	S	-	-	-	S	-	-	S	
Power exterior mirrors	S	S	S	S	S	S	S	S	S	S	S	S	S	S	S	S	
Chrome exterior mirrors, door and tailgate handles	-	-	-	-	-	-	-	-	S	-	-	-	S	-	-	S	
Exterior mirrors with integrated LED turn indicator and puddle lamps	-	-	-	-	-	-	-	-	-	-	-	-	-	-	-	S	
Aluminium side steps	-	-	-	-	-	-	-	-	S	-	-	-	S	-	-	S	
Roof rails	-	-	-	-	-	-	-	-	-	-	-	-	-	-	-	S	
Chrome sports bar with high mounted stop lamp	-	-	-	-	A	-	A	A	S	-	-	A	S	-	A	S	
Aerodynamic sports bar	-	-	-	-	-	-	-	-	-	-	-	-	-	-	-	S	
Roller shutter	-	-	-	-	-	-	-	-	-	-	-	-	-	-	-	NCO ¹⁸	
Bedliner with 12 volt power socket	-	-	-	-	A ¹⁹	-	A ¹⁹	A ¹⁹	S	-	-	A ¹⁹	S	-	A ¹⁹	S	
External rope rail	-	-	S	-	S	-	S	S	-	-	-	S	-	-	S	-	
Inner rope hooks	-	-	-	-	-	-	-	-	S	-	-	-	S	-	-	S	
Aluminium tray	O	O	-	O	-	-	-	-	-	O	O	-	-	-	-	-	
SAFETY AND SECURITY																	
Driver and front passenger airbags	S	S	S	S	S	S	S	S	S	S	S	S	S	S	S	S	
4-wheel Anti-lock Braking System (ABS) with Electronic Brakeforce Distribution (EBD)	O	O	O	-	-	S	-	-	S	O	-	-	S	-	-	S	
Safety pack featuring 4-wheel ABS with EBD, front side head/thorax airbags and sports weave trim	-	-	-	O	O	-	O	O	-	-	O	O	-	O ²⁰	O	-	
Front side head/thorax airbags	-	-	-	-	-	S	-	-	S	-	-	-	S	-	-	S	
Anti-theft alarm system	-	-	-	-	-	-	-	-	S	-	-	-	S	-	-	S	
Engine immobiliser & central locking	S	S	S	S	S	S	S	S	S	S	S	S	S	S	S	S	
Remote fuel lid opener	-	-	S	-	S	-	S	S	S	-	-	S	S	-	S	S	
Remote keyless entry with 2 key fobs	S	S	S	S	S	S	S	S	S	S	S	S	S	S	S	S	
INTERIOR																	
Multi-meter	-	-	-	-	-	-	-	-	-	-	-	-	-	-	-	S	
Tilt adjustable steering column	S	S	S	S	S	S	S	S	S	S	S	S	S	S	S	S	
Air-conditioning	NCO ⁶ /A	S	S	S	S	S	S	S	S	NCO ⁶ /A	S	S	S	S	S	S	
Leather steering wheel and gear knobs ²¹	-	-	-	-	-	-	-	-	S	-	-	-	S	-	-	S	
Power windows ²²	S	S	S	S ²²	S ²²	S	S	S	S	S	S ²²	S ²²	S ²²	S	S	S	
Inner chrome door handles	-	-	-	-	-	-	-	-	S	-	-	-	S	-	-	S	
Fan boosted ventilation/heater/demister	S	S	S	S	S	S	S	S	S	S	S	S	S	S	S	S	
Heated rear window	-	-	-	S	S	S	S	S	S	-	S	S	S	S	S	S	
INTERIOR STORAGE																	
Passenger side sliding lunch tray	S	S	S	S	S	S	S	S	S	S	S	S	S	S	S	S	
Double lid centre console with arm rest	-	-	-	S	S	S	S	S	S	-	S	S	S	S	S	S	
Under floor storage in rear compartment	-	-	-	S	S	-	-	-	-	-	S	S	S	-	-	-	
SEATING AND TRIMS																	
Dark Grey Cloth trim	S	S	S	S	S	-	S	S	-	S	S	S	-	S	S	-	
Sports Weave trim	-	-	-	O ²³	O ²³	S	O ²³	O ²³	S	-	O ²³	O ²³	S	O ²³	O ²³	S	
Alcantara leather trim (with Wildtrak logo)	-	-	-	-	-	-	-	-	-	-	-	-	-	-	-	S	
Front bench seat	S	-	-	-	-	-	-	-	-	S	-	-	-	-	-	-	
Front bucket seats	O ⁶	S	S	S	S	S	S	S	S	O ⁶	S	S	S	S	S	S	
Rear jump seats	-	-	-	S	S	-	-	-	-	-	S	S	S	-	-	-	
Rear bench seat with head rests	-	-	-	-	-	S	S	S	S	-	-	-	-	S	S	S	
Vinyl floor covering	S	S	S	-	-	-	-	-	-	S	-	-	-	-	-	-	
Cloth floor covering	-	-	-	S	S	S	S	S	S	-	S	S	S	S	S	S	
AUDIO & COMMUNICATION																	
iPod/MP3 connectivity ²⁴	S	S	S	S	S	S	S	S	S	S	S	S	S	S	S	S	
Single slot CD player with MP3 compatibility	S	S	S	S	S	S	S	S	-	S	S	S	-	S	S	-	
6-disc in-dash CD player with MP3 compatibility	-	-	-	-	-	-	-	-	S	-	-	-	S	-	-	S	

17. Front only. 18. Payload is reduced by 44kg when roller shutter is fitted. 19. Bedliner and 12 volt auxiliary power socket sold separately. 20. Safety pack is mandatory with optional automatic transmission (where available). 21. Leather gear knobs on manual transmission XLT/Wildtrak models. Not available with optional automatic transmission. 22. Super Cab models power front windows only. 23. Sports Weave trim is mandatory with safety pack option. 24. iPod or MP3 player not included. iPod is a trademark of Apple Inc. Please refer to www.ford.com.au for iPod compatibility.



Making your ownership experience even more rewarding.

A great car is just the beginning. We support you with a wide range of services that aim to make you one of the most satisfied vehicle owners in Australia. Speak to your Ford Dealer today about how we can help you make the most out of your vehicle ownership experience.

3 year/100,000km new car warranty.#

For three years or 100,000km, whichever comes first, your Ford is covered against any defects in factory materials or workmanship. This also applies to Genuine Ford Accessories you may have had fitted before you took delivery.

5 year warranty against perforation corrosion.#

It's reassuring to know that the original body of your gleaming new Ford is guaranteed against perforation corrosion for the first five years of its life. If perforation corrosion occurs, we'll fix it for free.

myFord Warranties & Insurance.

When you first turn the key of your brand new Ranger you want to do so without a care in the world. Our range of myFord products gives you

that extra peace of mind. For more information about myFord Warranties, Insurance and Roadside Assistance visit your participating Ford Dealer for further details on the plans that best suit your needs. Terms, conditions and eligibility criteria apply.

Want to contact us?

For answers to your questions, or help with any concern, contact our Customer Relationship Centre on 13 FORD (13 3673).

Running a fleet?

Our Ford Business Centre is available to assist fleet customers with information on Ford products and services. Call 1300 13 13 30.

Visit us on the web.

If you want more information on Ford or our entire product range, visit us on the Internet at ford.com.au

#Conditions and exclusions apply. See your authorised Ford Dealer for details.

This brochure is designed to provide you with a general introduction to the Ford Products (including available optional equipment) referred to, and should be read in conjunction with the latest specification sheet. Because of changes in conditions and circumstances Ford* reserves the right, subject to all applicable laws, at any time, at its discretion, and without notice, to discontinue or change the features, designs, materials, colours and other specifications and the prices of its products, and to either permanently or temporarily withdraw any such products from the market without incurring any liability to any prospective purchaser or purchasers. The latest specification sheet should be referred to for information on the availability, ordering and use of optional equipment. Always consult an authorised Ford Dealer for the latest information with respect to features, specifications, prices, optional equipment and availability before deciding to place an order. *FORD MOTOR COMPANY OF AUSTRALIA LIMITED. (A.B.N. 30 004 116 223) Registered Office: 1735 Sydney Road, Campbellfield, Victoria 3061, Australia. Printed July 2010. FRANG0001



CLICK TO REQUEST



QUOTE



HOT
DEALS



TEST
DRIVE



ford.com.au