

FALCON



Feel the difference

Ford Falcon

The Falcon perfectly blends a spirited driving experience with levels of luxury and comfort you'd expect to find in more expensive European marques.



Falcon XR6 Turbo shown in Nitro, Falcon XT shown in Lightning Strike and G6E Turbo shown in Edge.

G6E Turbo

The G6E Turbo brings a whole new dimension to luxury driving. You can tap into some serious power, while surrounded by first class interior comfort.



G6E Turbo shown in Edge.



With its 270kW/533Nm turbocharged I6 engine the G6E Turbo delivers all the power you need.

The remarkable Ford G6E Turbo not only delivers superb power and torque but boasts a long list of technology and safety features that ensure you arrive at your destination comfortable and relaxed. The Human Machine Interface system allows you to control your music while you relax and enjoy the drive. Plus, there's real peace of mind knowing that the Ford Falcon was the first Australian built car to be awarded ANCAP's 5 star safety rating.

G6

Sports performance, fuel efficiency and a roomy interior, the G6 is perfectly designed for your next family getaway, wherever that may be.



G6 shown in Sensation.

G6

With engines and transmissions designed for improved fuel efficiency, coupled with an interior that redefines family comfort, the G6 is ready for your next adventure.

If you are after affordable luxury and safety for the entire family you just can't look past the stylish Ford G6. The spacious interior, and the technology that allows the kids to play their favourite music, whilst you relax, makes weekend trips away even more enjoyable.

Spacious luxury

With so much room and luxury for every occupant, the Ford Falcon interior means everyone travels in style.



G6E Turbo shown with no cost optional Cashmere Leather seat inserts.

Class-leading towing capacity.

Whether you're hooking up a boat or a camper trailer you've all the power and torque you need to tow up to 2300kg.*



Class-leading boot capacity.

Pack all the family's bags and still have room enough for the golf clubs and a few boogie boards.

Flexibility of a folding second row seat.

A 60/40 split fold rear seat gives you added cargo space and a more flexible interior.

Class-leading interior space.

The Falcon leads its competitors with the best headroom, hip room and shoulder room, front and rear.

You can comfortably seat five adults in the Falcon, while the driver can luxuriate in a dynamic cockpit that boasts improved ergonomics for even greater driving pleasure. Passengers can sit back and experience elegant luxury, including leather trim options on the G6E models. Also, if the kids aren't on board, the Falcon's smart and flexible cabin layout can adapt to your needs, like being able to fold the rear seats to create a generous cargo space.

*When fitted with an automatic transmission and Genuine Ford heavy duty towbar and load levelling kit. Subject to state and territory regulations. Towball download and rear axle limits must not be exceeded. Please refer to your Ford Dealer for advice.

Technology & comfort

Falcon's athletic exterior holds much promise, and once behind the wheel that promise is well and truly kept.



G6E Turbo shown.



Child night lighting.

With adjustable interior lighting you can be sure not to disturb a moment's rest.



Climate control.

Set the interior temperature to suit your wishes, and travel in complete comfort.

All of the innovative comforts and interior finishes in the Falcon have been created with the driver in mind. The interior is an environment where technology and comfort combine to deliver an exhilarating yet sublime driving experience. And it's an experience that is as stress-free as possible, thanks to all of your creature comforts and controls being within easy reach.



iPod integration™

Play your favourite music and control everything through the vehicle's audio system.

Easy-to-use technology

The Ford Falcon has a long list of technological features that provide you with greater control and more comfort.



iPod Integration™



Bluetooth® mobile phone integration*



Satellite navigation system with Suna™ Traffic Channel.#

Human Machine Interface (HMI).

Incorporating the Interior Command Centre (ICC), multi-function display and steering wheel controls, the HMI, via a two display screens, allows simple navigation of menus and operation of vehicle functions. This greatly increases safety, because you can easily see information such as speed, overspeed, audio information, trip computer, average fuel economy, average speed, travel time and more, without taking your eyes off the road for a split second.

Satellite navigation.

Features a super-bright, widescreen display for easy map viewing and a built-in FM modulator which allows you to wirelessly transmit audio including MP3s and phone calls.



G6E Turbo interior shown.



G6E Turbo shown.

Multi-function Display.

The easy-to-read multi-function display allows you to check everything at a glance, from speed and journey distance to temperature, vehicle warnings and more.



Bluetooth®*

Enjoy hands-free communication while you're driving.

From the hands-free convenience of Bluetooth®* with steering wheel button control, to full iPod™ integration which lets you take your music where ever you go, the technology on-board the Falcon is at your fingertips for easy control and keeps you connected. What's more, the optional satellite navigation system,# optional on G6E, G6E Turbo and XR6 Turbo, will get you to your destination quickly and efficiently, with controls at your fingertips.

*Bluetooth® is a registered trademark of Bluetooth SIG Inc., and is used under license. Customers should consult their Ford Dealer on the ability of their mobile phone handset to integrate with the Bluetooth® system prior to making a purchase decision. #Not available on Falcon XT, XR6 or G6. Ford has an arrangement to provide the Suna Traffic Channel broadcast for a minimum of 5 years from the time of vehicle manufacture. Coverage includes Melbourne, Sydney, Brisbane, Canberra, Adelaide, Perth and Gold Coast metropolitan areas. Refer to www.sunattraffic.com.au for full details. ™iPod is a trademark of Apple Inc. Please refer to ford.com.au for iPod compatibility.



Passenger safety cell.

Incorporating ultra-high strength steel for greater all round strength and protection, the safety cell greatly reduces the likelihood of injury.

Safety comes first

Falcon's most innovative and important features are those that make your journey a safer one.

Follow-me-home lighting.

Front headlights stay on once the vehicle is locked, providing lighting to guide you home.

Intelligent Safety System.

In the event of an accident occurring, information is fed to the Advanced Restraints Module which instantly deploys the appropriate safety technologies.

Airbags.

A range of up to 6 airbags, including curtain airbags*, are designed to enhance your protection in the event of a crash.



DSC.

Dynamic Stability Control (DSC)™ strengthens your connection to the road and helps you avoid the problems of oversteer and understeer. DSC tracks the vehicle's movement and then works in tandem with Traction Control and ABS to help keep the vehicle under control.

Reverse sensing system.

Automatically activates and provides a warning tone to assist the driver to reverse with greater accuracy.



Reverse camera*:

Activates automatically when the car is engaged in reverse gear. With a fisheye lens capable of providing a 130° wide angle view up to 10 metres behind the car.

Fatigue warning.

Warns the driver to rest after driving for a continuous period.

A clear view of what surrounds you, along with located features that minimise time that your eyes are off the road help you to avoid an accident before it can happen. In the Falcon, safety starts before you even leave your driveway with a reversing camera* available that alerts you to things you can't see. You also have peace of mind with features like the availability of a range of airbags (including curtain airbags*), Dynamic Stability Control and a driver fatigue warning system. In the event of an accident, the Intelligent Safety System can determine which airbags to deploy in an instant.

The first Australian built vehicle to be awarded ANCAP's 5 star rating.



*Standard on G6E and G6E Turbo. Not available on Falcon XT, XR6 and G6. Falcon XR6 Turbo must be specified with optional reverse sensing system. #Curtain airbags are standard on G6E and G6E Turbo and optional on all other models. ™DSC also known as Electronic Stability Control.

A truly exhilarating drive

With a range of powerful and fuel-efficient engines, and smooth precise transmissions, the Falcon allows you to customise the driving experience you desire.

1. Virtual Pivot Control Link front suspension.

Designed specifically to suit Australian conditions and roads, the Virtual Pivot Control Link front suspension combines precise steering control and manoeuvrability with excellent levels of comfort.

2. Monotube shock absorbers.

Improves the vehicle's connection to the road as well as providing better handling.

3. Performance brakes.

Standard on G6E Turbo and XR6 Turbo, the larger diameter brakes feature vented discs and deliver outstanding stopping performance.

4. A range of stylish wheels.

Contemporary designed wheels including the optional 19" XR 5-spoke and 19" G Series 10-spoke alloy wheels.#

5. Control Blade Independent Rear Suspension (IRS).

One of the most advanced suspension systems on any Australian built car, for greater handling ability and ride comfort.



#Set of four.



Falcon XR6 Turbo shown in Lightning Strike.

Transmission.

The range of sophisticated transmissions deliver a spirited energetic drive as well as relaxed cruising and ultra-smooth gear changes.



Falcon's high-tech state of the art engines give you choice and power. Pick from either the 4.0L I6 engine that delivers 195kW of smooth effortless power and competitive fuel economy or the 4.0L I6 Turbo engine that delivers 270kw of thrilling sports power.

XR

If you love the type of spirited performance that sends a tingle down the spine, the Falcon XR is your dream drive.



Falcon XR6 shown in Sensation.

XR Luxury pack



There's nothing quite like the type of spirited performance that sends a tingle down the spine. If that's the feeling your driving experience is missing then the Falcon XR is your dream car. Best described as 'serious fun', the sublime combination of breathtaking power and precise control ensures the XR series delivers a driving experience that simply can't be duplicated. And if you want to take the experience one step further, add the XR luxury pack. Inside, it takes comfort to a new level, while the unique 19" and 18" XR 5-spoke alloy wheels* are the icing on the cake.

#Set of four.

Falcon vehicle range

From true sports performance to family luxury that lets you get away in real comfort, the Falcon range offers you so much choice.



Falcon XT



Falcon XT

- 195kW I6 engine with ZF 6-speed automatic transmission
- 16" alloy wheels*
- Single zone automatic climate control
- iPod integration™ and Bluetooth® mobile phone integration^
- 4-Way power driver's seat
- Driver, front passenger and front seat side head/thorax airbags†
- Dynamic Stability Control*

G Series



G6

- 195kW I6 engine with ZF 6-speed automatic transmission
- 17" alloy wheels*
- iPod integration™ and Bluetooth® mobile phone integration^
- Reverse sensing system
- Front fog lamps
- Luxury sports suspension

Falcon XR



XR6

- 195kW I6 engine with 6-speed manual transmission
- 17" alloy wheels*
- iPod integration™ and Bluetooth® mobile phone integration^
- Reverse sensing system
- Front fog lamps
- Sports seats and suspension



G6E

All the features of the G6, plus:

- Dual zone automatic climate control
- Premium audio system
- Leather detailed seat inserts
- Reverse camera
- Curtain plus front seat side/thorax airbags†
- 8-Way power adjustable driver's seat with memory



XR6 Turbo

All the features of the XR6, plus:

- 270kW/533Nm turbocharged I6 engine
- 18" alloy wheels*
- Performance front brakes
- Limited slip differential



G6E Turbo

All the features of the G6E, plus:

- 270kW/533Nm turbocharged I6 engine
- 18" alloy wheels*
- Rear lip spoiler
- Luxury Performance Suspension

Everybody's needs are different. Whether you're looking for a spacious family vehicle, or a car that delivers pulse-quickenng sports performance, the Falcon range has a vehicle that's just perfect for you.

#Set of four. *Dynamic Stability Control also known as Electronic Stability Control. ^Bluetooth® is a registered trademark of Bluetooth SIG Inc., and is used under license. Customers should consult their Ford Dealer on the ability of their mobile phone handset to integrate with the Bluetooth® system prior to making a purchase decision. †Front seat side/thorax airbags protect front seat occupants only. ™iPod is a trademark of Apple Inc. Visit ford.com.au for iPod compatibility.

Exterior colours



Vixen



Sunburst



Chill*



Nitro



Harmony



Silhouette



Mystic



Winter White



Havana



Viper



Seduce



Lightning Strike



Sensation



Edge

Exterior colours

Model	XT	XR	G Series
Vixen	●	●	—
Nitro	—	●	—
Mystic	—	●	●
Viper	—	●	—
Sensation	●	●	●
Edge	●	●	●
Harmony	●	—	●
Seduce	—	●	●
Winter White	●	●	●
Sunburst	—	●	—
Silhouette	●	●	●
Havana	●	—	●
Lightning Strike	●	●	●
Chill*	—	—	●

● = Available

*Chill available from November 2010.

Falcon XT and G Series interior seat trims

With such an eye-catching range of interior seat trims and colours available you can create a feel and mood for your Falcon that's just right for you.



G6E Turbo shown with no cost optional Cashmere Leather seat inserts.

Falcon XR interior seat trims

You can further enhance the sporty look and feel of the XR with a choice of striking interior seat trims and colours.

Streetwise Graphite*



Attitude Shadow

Nudo Shadow Weave Leather seat inserts*

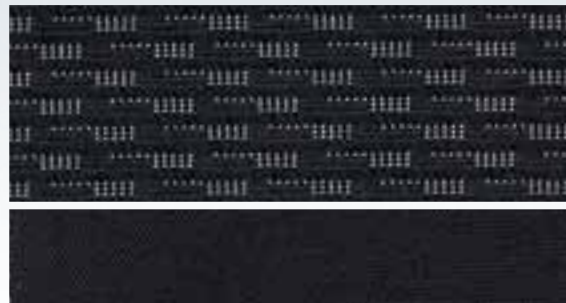


Nudo Shadow Leather seat inserts



Falcon XR6 Turbo shown with Streetwise Graphite trim and optional 6 speed automatic transmission.

Metro Shadow



Jacob Shadow

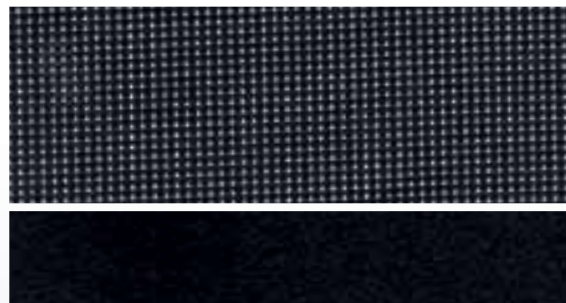


Shadow Leather seat inserts



Cashmere Leather seat inserts

Oxford Shadow



Estate Shadow

Seat trims

Model	XT	G6	G6E	G6E Turbo
Metro and Jacob Shadow	●	–	–	–
Oxford and Estate Shadow	–	●	–	–
Shadow Leather seat inserts	–	–	●	●
Cashmere Leather seat inserts	–	–	NCO	NCO

● = Standard. NCO = No cost option.

*Standard. #Optional.

Personalise your Falcon. The choice is yours

The Ford Vehicle Personalisation accessory range lets you personalise your Falcon to perfectly suit your needs.



Reverse sensing system. Automatically provides a warning tone to assist the driver when reversing.



XR waterproof seat covers. Help protect your seat fabric from dirt, sand, liquids and everyday wear and tear with these cleverly designed neoprene covers.



Ski/snowboard carrier.* Lockable with soft rubber padding to help prevent damage to skis. Accommodates up to 5 sets of skis.



Bike carrier.* Sturdy lockable alloy carrier secures a bike in an upright position.



Garmin Nüvi portable Satellite Navigation Systems.^ Widescreen display for easy map viewing. FM modulator allows you to wirelessly transmit audio.



Cargo swing net. Attaches to the sides of the cargo area to help prevent loose items moving around during transit.



Boot scuff guard. Designed to protect your Falcon's rear bumper and boot lip from scratches and scuffs.



Futuris rear headrest DVD system.^ Includes 2 wireless headphones and features a built-in FM modulator.



Scuff plates. Enhance the appearance of your Falcon with these sporty alloy scuff plates.



Carpet mats.‡ Featuring the 'Ford', 'XR' or 'G Series' logo. Anchor points fix the driver's mat to the floor.



18" and 8" XR 5-spoke alloy wheels.



19" and 8" G Series 10-spoke alloy wheels.

*Attaches to Genuine Ford carry bars (sold separately). ^This accessory is a Supplier Branded Accessory and is not manufactured or warranted by Ford. The warranty is provided by the manufacturer of the accessory. Contact your authorised Ford Dealer for details of the accessory manufacturer's warranty applicable to this accessory. ‡Set of four.

Accessories

	XT	XR6	XR6 Turbo	G6	G6E	G6E Turbo
Exterior styling						
17" x 8" XR 5-spoke alloy wheels - 245/45 R17 tyres ¹	-	S	A	-	-	-
18" x 8" XR 5-spoke alloy wheels - 245/40 R18 tyres ¹	-	O/A	S	-	-	-
19" x 8" G Series 10-spoke alloy wheels - 245/35 R19 tyres ¹	-	-	-	A	O/A	O/A
Spoiler	A	-	-	A	A	-
Mullins Raker 16" alloy wheels ^{1,2,3}	A	-	-	-	-	-
Mullins Edge 16" alloy wheels ^{1,2,3}	A	-	-	-	-	-
Mullins Raker 17" alloy wheels ^{1,2,3}	-	A	-	A	A	-
Mullins Haze 17" alloy wheels ^{1,2,3}	-	A	-	A	A	-
Mullins Shaker 17" alloy wheels ^{1,2,3}	-	A	-	A	A	-
Mullins Speedster 17" alloy wheels ^{1,2,3}	-	A	-	A	A	-
Mullins Raker 18" alloy wheels ^{1,2,3}	-	A	A	A	A	A
Mullins Vanquish 18" alloy wheels ^{1,2,3}	-	A	A	A	A	A
Mullins Haze 18" alloy wheels ^{1,2,3}	-	A	A	A	A	A
Mullins Sniper 18" alloy wheels ^{1,2,3}	-	A	A	A	A	A
Mullins Speedster 18" alloy wheels ^{1,2,3}	-	A	A	A	A	A
Mullins Shaker 18" alloy wheels ^{1,2,3}	-	A	A	A	A	A
Mullins Speedster 19" alloy wheels ^{1,2,3}	-	A	A	A	A	A
Mullins Vanquish 19" alloy wheels ^{1,2,3}	-	A	A	-	-	A
Alloy wheel lock nut set	A	A	A	A	A	A
Exterior protection						
Bonnet protector / headlamp guards / weathershields	A	A	A	A	A	A
Lights on feature	A	A	A	A	A	A
Mudspats ⁴	A	A	A	A	A	A
Interior styling, comforts and storage						
XR waterproof seat covers ⁵	-	A	A	-	-	-
Scuff plates	A	A	A	A	S	S
Carpet mats / rubber floor mats ⁵	A	A	A	A	A	A

	XT	XR6	XR6 Turbo	G6	G6E	G6E Turbo
Interior styling, comforts and storage (continued)						
Waterproof boot liner	A	A	A	A	A	A
Boot scuff guard	A	A	A	A	A	A
Cargo swing net	A	A	A	A	A	A
Dash mat	A	A	A	A	A	A
Personal organiser	A	A	A	A	A	A
Pollen filter	A	A	A	A	A	A
Smoker's pack	A	A	A	A	A	A
In car entertainment and electrical						
Child activity organiser	A	A	A	A	A	A
Fridge 'Day Tripper' 15L/fridge power adaptor	A	A	A	A	A	A
Garmin Nuvi portable satellite navigation systems ³	A	A	A	A	A	A
Futuris rear headrest DVD system - single or dual slot ³	A	A	A	A	A	A
Safety and security						
Perimeter alarm	A	A	A	A	A	A
Reverse sensing system	O/A	O/A	O/A	S	S	S
Go Technologies reversing camera systems ³	A	A	A	A	-	-
Towing and carrying						
Carry bars	A	A	A	A	A	A
Carry bar accessories: bike carrier, canoe/kayak carrier, ski/snowboard carrier, roof luggage box 375L ⁷	A	A	A	A	A	A
Towpack - heavy duty 2300kg rated incl. load levelling kit ^{8,9}	A	A	A	A	A	A
Rhino-Rack 2500 multi-fit carry bars ³	A	A	A	A	A	A
Rhino-Rack luggage carrier - small/medium ³	A	A	A	A	A	A
Rhino-Rack roof top bike carrier ³	A	A	A	A	A	A
Rhino-Rack locking ski /snowboard carrier - 2pr / 4pr / 6pr ³	A	A	A	A	A	A
Rhino-Rack locking fishing rod carrier ³	A	A	A	A	A	A
Rhino-Rack universal holder ³	A	A	A	A	A	A
Rhino-Rack kayak/canoe carriers ³	A	A	A	A	A	A

S = Standard. O = Optional. A = Accessory that can be added at any time. - = Not available.

1. Wheels and tyres sold separately when fitted in Dealership. 2. It is recommended that tyres matching original equipment specification be fitted to Mullins alloy wheels. 3. This accessory is a Supplier Branded Accessory and is not manufactured or warranted by Ford. The warranty is provided by the manufacturer of the accessory. Contact your authorised Ford Dealer for details of the accessory manufacturer's warranty applicable to this accessory. 4. Front and rear sets sold separately. 5. Driver and front passenger seat covers sold separately. 6. Set of four. 7. Attaches to Genuine Ford carry bars (sold separately). 8. Subject to State and Territory regulations. 9. Available on automatic transmission models only.

Mechanical specifications

Engine type	4.0L DOHC DI-VCT I6	4.0L DOHC DI-VCT TURBO I6		
Applicable models	XT, XR6, G6, G6E	XR6 Turbo, G6E Turbo		
Maximum power (DIN)	195kW @ 6000rpm	270kW @ 5250rpm ¹		
Maximum torque (DIN)	391Nm @ 3250rpm	533Nm @ 2000rpm ¹ – 4750rpm ¹		
No. of valves	24	24		
Fuel management system	Sequential multipoint electronic fuel injection	Sequential multipoint electronic fuel injection		
Engine management	Powertrain control module incorporating electronic throttle control			
Fuel				
Fuel tank capacity	68	68		
Combined fuel consumption: ADR 81/02 (L/100km - rounded) ²	9.9 ³	11.7 ⁴ (6-speed auto)		
Recommended fuel	ULP or PULP E10 Compatible	ULP or PULP E10 Compatible		
Suspension				
Front	Virtual Pivot Control Link front suspension			
Rear	Control Blade Independent Rear Suspension			
Steering				
Steering type	Forward mounted power assisted rack and pinion			
Steering gear	Variable ratio			
Brakes and stability control				
Front brakes	Standard vented disc brakes with twin piston caliper (Performance brakes on XR6T and G6ET)			
Rear brakes	Standard solid disc brake with single piston caliper			
Anti-lock Braking System (ABS)	4-Channel ABS with Electronic Brakeforce Distribution (EBD) and Emergency Brake Assist (EBA)			
Dynamic Stability Control (DSC)	Dynamic Stability Control (DSC) incorporates Traction Control System (TCS), Emergency Brake Assist (EBA) and 4-channel ABS with Electronic Brakeforce Distribution (EBD).			
Maximum braked towing capacity⁵		All series		
Manual	1200kg ⁶	–	1600kg ⁶	
Automatic		2300kg ⁷		
Exterior dimensions (mm)		XT	XR6 & XR6 Turbo	G6, G6E, G6E Turbo
Overall length	4955	4970	4967	
Overall width ⁸	1868	1868	1868	
Overall height	1453	1433	1433	
Interior dimensions (mm)				
Front headroom	1012			
Front legroom	1073			
Front shoulder room	1523			
Front hiproom	1486			
Rear headroom	989			
Rear legroom	989			
Rear shoulder room	1518			
Kerb weight (kg) (approximate kerb weights)				
6-Cylinder Petrol ⁹	1704			
Luggage capacity (L)				
Petrol	535			

1. Power and torque figures measured using premium unleaded fuel (95 RON). 2. Figures obtained from controlled tests using ADR 81/02. Actual fuel consumption and CO₂ emissions will depend on many factors including driving habits, prevailing conditions and your vehicle's equipment, condition and use. 3. Based on 6-speed automatic transmission (optional on XR6). 4. Based on Ford G6E Turbo sedan with 6-speed automatic transmission. 5. Subject to State and Territory regulations. 6. When fitted with Genuine Ford towbar. Towball download and rear axle limits must not be exceeded. Please refer to your Ford Dealer for advice. 7. When fitted with a Genuine Ford heavy duty towpack and load levelling kit. Towball download and rear axle limits must not be exceeded. Please refer to your Ford Dealer for advice. 8. Excludes exterior side mirrors. 9. Approximate kerb weight for Falcon XT fitted with standard petrol engine and 6-speed automatic transmission and includes fuel to full capacity and no occupants or luggage.

Specifications and options

	XT	XR6	XR6 Turbo	G6	G6E	G6E Turbo
4.0L DOHC DI-VCT I6	S	S	-	S	S	-
6-speed manual transmission	-	S	-	-	-	-
ZF 6-speed automatic transmission with Sequential Sports Shift	S	O	-	S	S	-
4.0L DOHC DI-VCT TURBO I6	-	-	S	-	-	S
6-speed manual transmission	-	-	S	-	-	-
ZF 6-speed automatic transmission with Sequential Sports Shift	-	-	O	-	-	S
Ride and handling						
Virtual Pivot Control Link front suspension	S	S	S	S	S	S
Control Blade Independent Rear Suspension (IRS)	S	-	-	-	-	-
Sports Control Blade Independent Rear Suspension (IRS)	-	S	S	-	-	-
Luxury Sports Control Blade Independent Rear Suspension (IRS)	-	-	-	S	S	-
Luxury Performance Control Blade Independent Rear Suspension (IRS)	-	-	-	-	-	S
16" x 6.5" XT 5-spoke alloy wheels - 215/60 R16 tyres ¹⁰ .	S	-	-	-	-	-
17" x 8" XR 5-spoke alloy wheels - 245/45 R17 tyres ¹⁰ .	-	S	A ¹¹ .	-	-	-
18" x 8" XR 5-spoke alloy wheels - 245/40 R18 tyres ¹⁰ .	-	O/A ¹¹ .	S	-	-	-
19" x 8" XR 5-spoke alloy wheels - 245/35 R19 tyres ¹⁰ .	-	P/A ¹¹ .	O/P	-	-	-
17" x 8" G6 7-spoke alloy wheels - 235/50 R17 tyres ¹⁰ .	-	-	-	S	-	-
17" x 8" G6E 10-spoke alloy wheels - 235/50 R17 tyres ¹⁰ .	-	-	-	-	S	-
18" x 8" G Series 7-spoke alloy wheels - 245/40 R18 tyres ¹⁰ .	-	-	-	A ¹¹ .	A ¹¹ .	S
19" x 8" G Series 10-spoke alloy wheels - 245/35 R19 tyres ^{10,12} .	-	-	-	A ¹¹ .	O/A ¹¹ .	O/A ¹¹ .
17" temporary spare wheel ¹³ .	S	S	S	S	S	S
Temporary mobility kit (LPG only) ¹³ .	S	S	-	S	S	-
Matching spare alloy wheel ¹⁴ .	O	O	O	O	O	O
Limited slip differential	-	-	S	-	-	-
Exterior						
Sports body kit - side skirts and rear bumper	-	S	S	S	S	S
Rear lip spoiler	-	-	-	-	-	S
Sports rear spoiler	-	S	S	-	-	-
Front fog lamps	-	S	S	S	S	S
Side mirror turn indicators	-	-	-	-	S	S
Towbar - 1600kg rated ¹⁵ .	O	O	O	O	O	O
Instrumentation and controls						
Human Machine Interface (HMI) with Interior Command Centre	S	S	S	S	S	S
Multi-function Display including distance to empty, average speed, average fuel consumption, speed warning	S	S	S	S	S	S
Cruise control with steering wheel mounted controls	S	S	S	S	S	S
Steering wheel mounted audio controls	S	S	S	S	S	S
Leather wrapped steering wheel	-	-	-	S	-	-
Sports leather wrapped steering wheel	-	S	S	-	S	S
Comfort and convenience						
Single zone automatic climate control	S	S	S	S	-	-
Dual zone automatic climate control	-	P	P	-	S	S
Front and rear power windows	S	S	S	S	S	S
Automatic headlamps ON/OFF feature	S	S	S	S	S	S
Power adjustable side mirrors	S	S	S	S	-	-
Power adjustable side mirrors with memory and reverse auto adjust	-	-	-	-	S	S

	XT	XR6	XR6 Turbo	G6	G6E	G6E Turbo
Comfort and convenience (continued)						
Electrochromatic rear vision mirror	-	-	-	-	S	S
Alloy pedal covers	-	S	S	-	-	-
Front scuff plates	-	-	-	-	S	S
Overhead sunglasses console	-	-	-	-	S	S
Remote keyless entry	S	S	S	S	S	S
Seating						
Adjustable driver's seat lumbar support	S	S	S	S	S	S
Adjustable passenger's seat lumbar support	-	S	S	S	S	S
4-way power driver's seat	S	S	S	S	-	-
8-way power adjustable driver's seat with 3-position memory	-	-	-	-	S	S
60/40 split fold rear seats	S	S	S	S	S	S
Centre rear armrest with cup holders	-	S	S	S	S	S
Audio & communication						
Standard audio system with monochrome display, AM/FM radio, single slot CD and 4 speakers (total 112 watts)	S	S	S	S	-	-
Premium audio system with 7" colour display, AM/FM radio, 6-disc in-dash CD, 8 speakers plus 150 watt amplifier and sub-woofer (total 262 watts)	-	O/P	O/P	-	S	S
MP3 CD capability	S	S	S	S	S	S
3.5mm auxiliary audio input	S	S	S	S	S	S
Satellite navigation system with Suna Traffic Channel ¹⁶ .	-	-	O	-	O	O
Bluetooth [®] mobile phone integration ¹⁷ .	S	S	S	S	S	S
iPod Integration ¹⁸ .	S	S	S	S	S	S
Safety & security						
Intelligent Safety System	S	S	S	S	S	S
Driver and front passenger airbags	S	S	S	S	S	S
Front seat side head/thorax airbags ¹⁹	S	S	S	S	-	-
Curtain airbags plus front seat side/thorax airbags ²⁰ .	O/P	O/P	O/P	O/P	S	S
Pyrotechnic seatbelt buckle pretensioners ¹⁹ .	S	S	S	S	S	S
Advanced restraints module	S	S	S	S	S	S
Crash severity sensor	S	S	S	S	S	S
Driver's seat position sensor	S	S	S	S	S	S
Beltminder™ system ¹⁹ .	S	S	S	S	S	S
Dynamic Stability Control incorporating ²¹ .	S	S	S	S	S	S
Traction Control	S	S	S	S	S	S
Emergency Brake Assist (EBA)	S	S	S	S	S	S
Anti-lock Braking System (ABS)	S	S	S	S	S	S
Electronic Brakeforce Distribution (EBD)	S	S	S	S	S	S
Reverse sensing system	O/A	O/A	O/A	S	S	S
Reverse camera ²² .	-	-	O	-	S	S
Driver fatigue warning	S	S	S	S	S	S
Central locking all doors	S	S	S	S	S	S
Optional packs						
XR Luxury Pack						
Leather seat inserts, premium audio system with 7" colour display, AM/FM radio, 6-disc in-dash CD and 8 speakers plus 150 watt amplifier and sub-woofer (total 262 watts). Dual zone automatic climate control, premium sports interior appearance 19" x 8" XR 5-spoke alloy wheels - 245/35 R19 tyres ¹⁰ .	-	O	O	-	-	-

S = Standard. O = Optional. P = Part of optional pack. NCO = No cost option. - = Not available. A = Accessory available at any time.

10. Set of four. 11. Wheels and tyres sold separately. 12. When specified on G6E, the vehicle will be fitted with Luxury Performance suspension. 13. If spare wheel, rim or tyre size differs from the other wheels fitted, the vehicle should be driven with caution, not exceed 80km/h and the standard wheel and tyre fitted as soon as possible. 14. Spare wheel matches road wheels. 15. Towball sold separately when factory fitted. 16. Ford has an arrangement to provide the Suna Traffic Channel broadcast for a minimum of 5 years from the time of vehicle manufacture. Coverage includes Melbourne, Sydney, Brisbane, Adelaide, Perth, Canberra and Gold Coast metropolitan areas. Refer to www.sunatrafic.com.au for full details. 17. Bluetooth[®] is a registered trademark of Bluetooth SIG, Inc. and is used under license. Customers should consult their Ford Dealer on the ability of their mobile phone handset to integrate with the Bluetooth[®] system prior to making a purchase decision. 18. iPod is a trademark of Apple Inc. Please refer to ford.com.au for iPod compatibility. 19. Driver and front passenger only. 20. Front seat side/thorax airbags protect front seat occupants only. 21. Dynamic Stability Control also known as Electronic Stability Control. 22. Falcon XR must be specified with reverse sensing system.

Making your ownership experience even more rewarding

A great car is just the beginning. We support you with a wide range of services that aim to make you one of the most satisfied vehicle owners in Australia.



Speak to your Ford Dealer today about how we can help you make the most out of your vehicle ownership experience.

myFord Roadside Assistance.

Our commitment to your complete satisfaction plays a major role in everything we do. That is why we provide myFord Roadside Assistance for all Ford Falcon models. Wherever and whenever you need emergency roadside assistance, help is available 24 hours a day, 365 days a year. If your vehicle breaks down and cannot be repaired, we will organise to transport your vehicle to the nearest Ford Dealer or approved service centre for repair. myFord Roadside Assistance is valid for 1 year from the vehicle's first registration.

3 year/100,000km new car warranty.*

For three years or 100,000km, whichever comes first, your Ford is covered against any defects in factory materials or workmanship. This also applies to Genuine Ford Accessories you may have had fitted before you took delivery.

5 year warranty against perforation corrosion.#

It's reassuring to know that the original body of your gleaming new Ford is guaranteed against perforation corrosion for the first five years of its life. If perforation corrosion occurs, we'll fix it for free.

myFord Warranties & Insurance.

When you first turn the key of your brand new Falcon you want to do so without a care in the world. Our range of myFord products gives you that extra peace of mind. For more information about myFord Warranties and Insurance, visit your participating Ford Dealer for further details on the plans that best suit your needs. Terms, conditions and eligibility criteria apply.

Want to contact us?

For answers to your questions, or help with any concern, contact our Customer Relationship Centre on 13 FORD (13 3673).

Running a fleet?

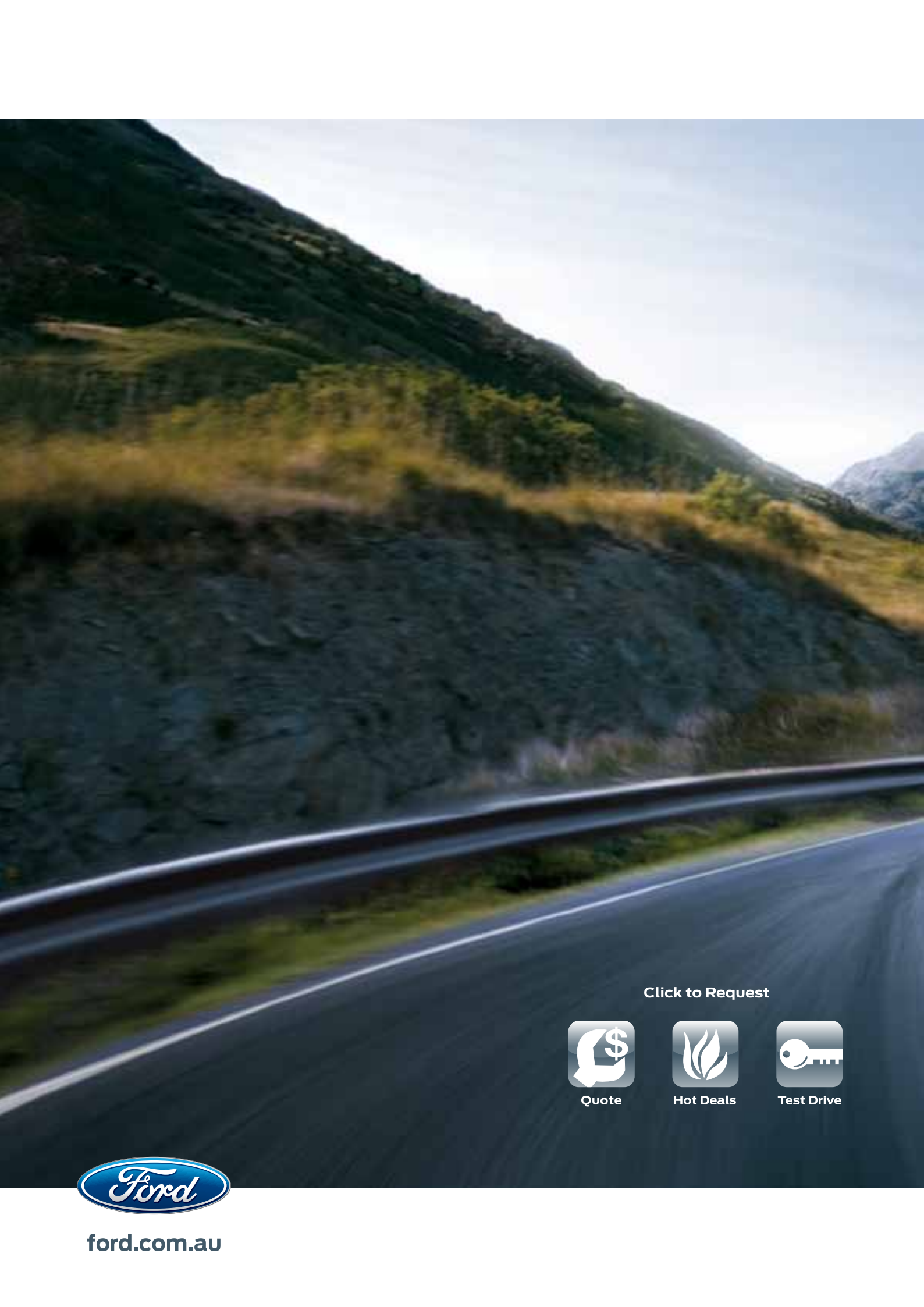
Our Ford Business Centre is available to assist fleet customers with information on Ford products and services. Call 1300 13 13 30.

Visit us on the web.

If you want more information on Ford or our entire product range, visit us on the Internet at ford.com.au.

#Conditions and exclusions apply. See your authorised Ford Dealer for details.

This brochure is designed to provide you with a general introduction to the Ford Products (including available optional equipment) referred to, and should be read in conjunction with the latest specification sheet. Because of changes in conditions and circumstances Ford* reserves the right, subject to all applicable laws, at any time, at its discretion, and without notice, to discontinue or change the features, designs, materials, colours and other specifications and the prices of their products, and to either permanently or temporarily withdraw any such products from the market without incurring any liability to any prospective purchaser or purchasers. The latest specification sheet should be referred to for information on the availability, ordering and use of optional equipment. Always consult an authorised Ford Dealer for the latest information with respect to features, specifications, prices, optional equipment and availability before deciding to place an order. *FORD MOTOR COMPANY OF AUSTRALIA LIMITED. (A.B.N. 30 004 116 223) Registered Office: 1735 Sydney Road, Campbellfield, Victoria 3061, Australia. Printed October, 2010. FFALC0037_eb



Click to Request



Quote



Hot Deals



Test Drive



ford.com.au