

IONIQ 5

2023



Because of you.

At Hyundai, we believe that only with you in mind will we be able to provide progress, innovation, sustainability and mobility that evolves the driving experience.

We prioritize research and development in connected and clean mobility solutions, continuing to push boundaries and challenge conventional thinking to bring you a connected experience and a sustainable vision for the future.

We are inspired to build platforms and technology that provide you with more ways to enjoy quality time with our vehicles. To live a comfortable and connected life where you enjoy the journey, not just the destination.

We also tailor our vehicles with features that meet the demands of our Canadian landscape, so you can take on our extreme winters and amazing summers in comfort and with confidence. And of course, we back our vehicles with one of the best automotive warranties in the industry.

We do all of this because of you.



Power your world.

The beautifully designed IONIQ 5 marks the new standard for our EV series. Every aspect was designed with the latest technological and design advances for peak efficiency, performance and comfort for everyone in the vehicle.

Take on the world confidently with the Electric – Global Modular Platform dedicated exclusively to EVs and revolutionary new features such as available All-Wheel Drive, available super-fast charging and an available augmented reality head-up display, essentially turning your windshield into a display screen — a first for Hyundai.

The IONIQ 5 is a leader in its class, offering a suite of standard and available features such as:



In just 18 minutes, you can top up from a 10% to an 80% charge with a 350 kW DC fast charger



Dual 12.3" displays



Available 77.4 kWh long-range battery with up to 488 km per full charge[^]



Cutting-edge parametric pixel LED lighting

[^]All-electric driving range of 488 kilometres based on a battery capacity of 77.4 kWh and battery usage rate of 18.6 kWh/100 km. Calculated based on a fully charged battery. Based on manufacturer testing and used for comparison purposes only. Actual range may vary based on driving conditions and the addition of certain vehicle accessories.

Minimal ultra-modern design. Lots to take in.

Bold lines and aerodynamic design make every drive a grand entrance. Distinctive active air intakes, sharp lines and a hidden charging port give the vehicle a sleek and strong modern look. Unmistakable pixel LED headlights and tail lights embody Hyundai's standout "Parametric Dynamics" design. The auto-flush door handles and available 20" alloy wheels, with a unique fractal design, provide enhanced aerodynamics for improved efficiency so you can take on your to-do list confidently.



Preferred AWD Long-Range with Ultimate package shown. May not be exactly as shown.



Aerodynamic design



Parametric pixel LED headlights



LED daytime running lights



Available 20" alloy wheels



LED tail lights

An interior, fully reimagined.

The spacious interior proudly redefines what an interior could be. From the moment you step inside, you'll be welcomed with warm colour tones with available ambient lighting, hi-tech features and an inviting interior design with impressive cabin space. The interior is yours to control with heated and available ventilated seats, an available driver's relaxation seat, second-row reclining and sliding seats and an available sliding centre console that can be moved to the front or the rear, giving you an open and comfortable environment. It's your home away from home.



Available vision sunroof



Standard heated steering wheel



Standard heated front seats



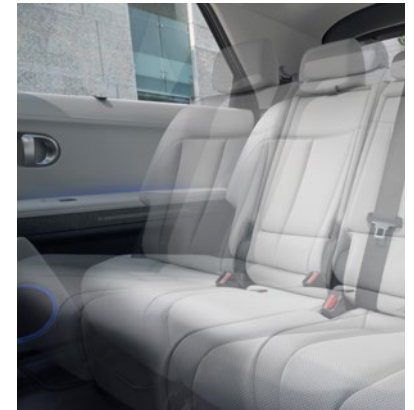
Standard 8-way power driver's seat with lumbar support



Available sliding centre console



Available ventilated front seats



Standard second-row sliding seating

Ultra-fast. Ultra-capable.

From weekday fun to weekend warrior, the IONIQ 5 will get you there in a flash with outstanding sportscar acceleration — from 0 to 100 km/h in an exceptional 5.1 seconds*.

You have a choice of two battery options with different range potentials of up to 354 or 488 kilometres. And both battery options are ready for Canadian winters.

As the first EV from Hyundai with All-Wheel Drive, its dual motors are able to crank out up to an incredible 239 kW or 320 hp to help you navigate through the most difficult terrains.

With the IONIQ 5, charging is as easy as plugging in your smartphone. When using the standard 350 kW DC ultra-fast charger, the IONIQ 5 can be quickly charged from 10% to 80% in just 18 minutes. And when you're in a hurry, a 5-minute charge will give you an astonishing range of over 100 kilometres.



Available HTRAC™ All-Wheel Drive with Snow mode

Take on winter with confidence by activating the available Snow mode. This intuitive traction feature can distinguish between packed and deep snow conditions on the road and adjust traction accordingly for optimal grip to improve handling during winter driving.



Electric

Standard
125 kW
electric motor

+

58 kWh
lithium-ion battery

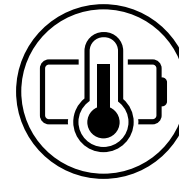
Up to
354 km
all-electric driving range[‡]

Available
168 kW / 239 kW
electric motor

+

77.4 kWh
lithium-ion battery

Up to
488 km
all-electric driving range[^]



Standard Battery Temperature Management System

Beneficial for Canadian winters, this system helps ensure battery performance does not suffer at low temperatures. It will pre-warm the battery while the vehicle is connected to the charger to help maximize performance and minimize cold temperature range loss.



Standard Heat Pump System

Helps reduce loss of electric driving range in cold winter weather. The available system absorbs external heat energy and converts it to cabin heating, therefore requiring less energy usage by the HVAC system.

Fully connected to you.

The IONIQ 5 has a masterful integration of digital and analog technologies that can be found throughout the vehicle. Inside, you'll be equipped with a full suite of exciting features, like an integrated 12.3" digital cluster, a second brilliant 12.3" touch-screen display with standard Apple CarPlay™ and Android Auto™, USB charging and an available Bose® premium sound system to play your favourite songs with concert-like sound. You'll also find convenient tech, like available Remote Smart Parking Assist and available surround view monitor for added peace of mind on the road.

Furthermore, the IONIQ 5 allows bi-directional charging with standard Vehicle to Load (V2L) capability, essentially allowing the vehicle to be used as a power source. So, if your power goes out in the middle of dinner, the IONIQ 5 is powerful enough to run your home appliances while charging your phones and laptops.



Available augmented reality head-up display



Standard V2L (Vehicle to Load) charging technology



Standard 12.3" full digital instrument cluster



Standard 12.3" touch-screen with navigation



Available Bose® premium sound system



Available Remote Smart Parking Assist

Ultimate convenience. Ultimate connectivity.

The IONIQ 5 offers standard Bluelink[®], our connected vehicle system that conveniently keeps you connected with your Hyundai via the smartphone app and offers a suite of services at the press of a button.

This innovative connected system gives you the ability to remotely lock/unlock and start your vehicle, adjust climate controls, check charge status or available battery range and keep track of your vehicle's health with smart diagnostic tools. You can even start and stop charging remotely.



Remote start with climate control

SOS

SOS emergency and roadside assistance



Automatic collision notification



Remote lock/unlock



Find my car



Local search



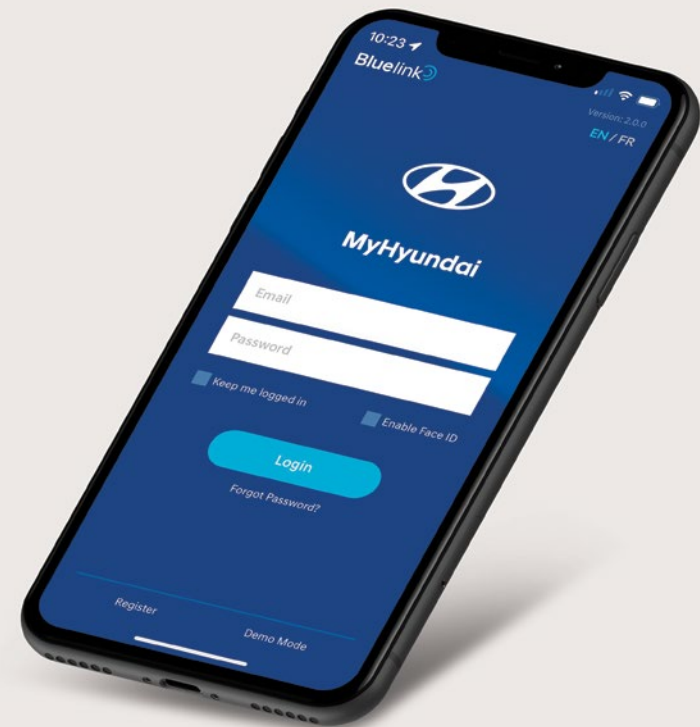
Real-time diagnostics



Find a dealer

3 YEAR

Complimentary 3-year subscription on equipped models



Hyundai SmartSense™

Our suite of available Hyundai SmartSense™ safety features includes a range of camera, radar and motion detection technologies to provide you with added peace of mind.

Standard features:



Forward Collision-Avoidance Assist with Pedestrian, Cyclist, Junction-Turning and available Junction-Crossing Detection



Blind-Spot Collision-Avoidance Assist



Rear Cross-Traffic Collision-Avoidance Assist



Rear Occupant Alert



Lane Departure Warning with Lane Keeping Assist



Lane Following Assist



High Beam Assist



Adaptive Cruise Control with traffic stop and go



Driver Attention Warning



Safe Exit Assist

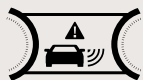


Highway Driving Assist with available automatic lane changing



Parking Distance Warning - Reverse

Available features:



Blind View Monitor



Parking Distance Warning - Forward



Parking Collision-Avoidance Assist - Reverse

Find the IONIQ 5 that is right for you.

Preferred Short Range RWD

Standard equipment includes:

Performance features:

- Heat Pump System and Battery Temperature Management System
- Battery pre-conditioning system
- EV ultra-fast charger
- 125 kW electric motor + 58 kWh lithium-ion high-voltage battery
- Shift-by-wire gear selector
- Drive Mode Select
- Regenerative braking system with steering wheel-mounted paddles
- Independent front suspension; multi-link rear suspension
- 4-wheel disc brakes
- Electronic parking brake with automatic vehicle hold

Exterior features:

- 19" alloy wheels
- Auto flush door handles
- Proximity keyless entry with push-button ignition
- LED daytime running lights (DRL)
- Automatic MFR LED headlights
- LED tail lights
- Rear spoiler with LED brake light
- Dual heated side mirrors with LED turn signal indicators
- Shark fin antenna
- Solar front glass and rear privacy glass
- Hidden charger door on rear side panel

Interior features:

- 6-way manually adjustable front passenger's seat
- Heated steering wheel
- 12.3" electroluminescent gauge cluster with EV technology display
- 12.3" navigation system with EV technology functions
- Leather-wrapped steering wheel
- Tilt-and-telescopic steering wheel with audio, cruise and phone controls
- 8-way power driver's seat with height adjustment and 2-way power lumbar support
- 4-way manually adjustable front passenger's seat
- Heated front seats
- LED interior overhead lighting

- LED illuminated vanity mirrors and sunvisor extensions
- Power windows with driver's auto-up/down
- Sliding second-row seats
- Dual automatic temperature control with driver-only mode
- Apple CarPlay™ and Android Auto™
- SiriusXM™ satellite radio, HD radio
- Bluelink® connected vehicle system^o
- Centre console with storage compartment and armrest
- Second-row bench seats including 60/40 split-fold down and fold-almost flat seats
- Front and rear cargo areas with cargo hooks and cargo area lights

Safety features:

- Vehicle Stability Management and Electronic Stability Control with Traction Control System
- Hill-start Assist Control and Downhill Brake Control
- Regenerative braking system with Anti-lock Braking System
- Blind-Spot Collision-Avoidance Assist
- Rear Cross-Traffic Collision-Avoidance Assist
- Forward Collision-Avoidance Assist with Pedestrian, Cyclist, Car and Junction-Turning Detection
- Lane Keeping Assist
- Lane Following Assist
- High Beam Assist
- Driver Attention Warning
- Rearview camera with dynamic guidelines
- Safe Exit Assist
- Rear Occupant Alert
- Highway Driving Assist
- Parking Distance Warning — Reverse
- Adaptive Cruise Control with traffic stop and go
- Remote keyless entry with alarm and immobilizer
- Tire Pressure Monitoring System with individual tire pressure indicator
- Tire mobility kit
- Seatbelt reminder for all occupants

Preferred Long Range

Includes Preferred Short Range RWD standard equipment plus:

Performance features:

- 168 kW electric motor + 77.4 kWh lithium-ion high-voltage battery
- Trailer wiring harness (4-pin)

Preferred AWD Long Range

Includes Preferred Long Range standard equipment plus:

Performance features:

- All-Wheel Drive dual motors
- 239 kW electric motor + 77.4 kWh lithium-ion high-voltage battery

Preferred AWD Long Range with Ultimate package

Includes Preferred AWD Long Range standard equipment plus:

Exterior features:

- 20" alloy wheels
- Glossy black side mirror neck and belt line and chrome door garnish
- Power-folding outside mirrors
- Full LED headlights (low and high projection)
- "V" LED light guide (front and rear)
- Vision sunroof

Interior features:

- Rain-sensing windshield wipers
- Hands-free smart power liftgate with auto-open
- Two-way on-board charger (V2L) on rear seat
- Wireless charging pad
- Bose® premium audio
- Leatherette seating surfaces
- Premium relaxation seating (driver)
- 8-way power passenger seat with power lumbar support
- Ventilated front seats
- Heated rear seats
- Advanced head-up display (augmented reality)
- Ambient lighting
- Driver's integrated memory system
- Sliding centre console
- Power windows with driver's auto-up/down
- Auto-dimming inside rearview mirror with HomeLink®
- Rear door sun shades
- Cargo cover
- Premium door sill plates

Safety features:

- Remote Smart Parking Assist
- Highway Driving Assist II
- Surround view monitor (SVM)
- Blind View Monitor (BVM)
- Forward Collision-Avoidance Assist with Pedestrian, Car, Cyclist, Junction-Crossing and Junction-Turning Detection
- Parking Collision-Avoidance Assist — Reverse
- Parking Distance Warning — Forward / Reverse

Colours and wheels.

Exterior colours*



Atlas White



Abyss Black

Not available on Preferred Short Range RWD model or Preferred AWD model with Ultimate package Teal-grey two-tone interior models



Cyber Grey

Not available on Preferred Short Range RWD model or Preferred AWD model with Ultimate package Teal-grey two-tone interior models



Shooting Star Grey (Matte)

Not available on Preferred Short Range RWD model, Preferred RWD or Preferred AWD model with Ultimate package Teal-grey two-tone interior models



Lucid Blue

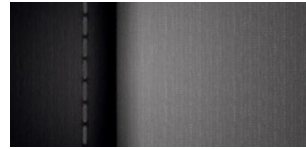
Not available on Preferred Short Range RWD model, Preferred AWD Grey two-tone interior or Preferred AWD model with Ultimate package Grey and Teal-grey two-tone interior models



Digital Teal Green

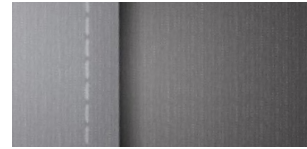
Available on Preferred AWD with Ultimate package and Teal-grey two-tone interior model only

Interior colours*



Black cloth

Standard on Preferred Short Range RWD, Preferred LR, Preferred SR and Preferred AWD LR models



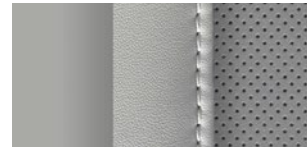
Grey two-tone cloth

Available on Preferred LR and Preferred AWD LR models



Black leather

Standard on Preferred AWD model with Ultimate package



Grey two-tone leather

Available on Preferred AWD model with Ultimate package Not available with Lucid Blue exterior colour Not available with Digital Teal Green exterior colour



Teal-grey two-tone leather

Available on Preferred AWD model with Ultimate package and Digital Teal Green exterior colour only

Wheels



19" alloy wheel

Standard on Preferred Short Range RWD, Preferred Long Range and Preferred AWD Long Range models



20" alloy wheel

Standard on Preferred AWD model with Ultimate package

*Exterior and interior colour options and/or availability may change without notice. Choice of interior colour is dependent on model and/or exterior colour selection. Colours shown are for reference only and may vary from the actual hue. Visit hyundaicanada.com or see your dealer for details.

Accessories.



Trailer hitch kit

Designed to meet your towing needs, a Hyundai hitch can accommodate a wide variety of hitch-mounted accessories.



Plastic hood protector

Help prevent dents and scratches caused by road and vehicle debris with an attractive plastic hood protector.



Mud guard kit

Custom-fit mud guards help keep the dirt and debris of everyday driving where they belong.



Side visors

Complement your vehicle with a sleek and durable set of side visors that will help reduce glare while providing you with fresh air. Custom-made for your vehicle using high-quality, reinforced tinted acrylic plastic, these visors will look good on your vehicle for years to come.



Cargo tray

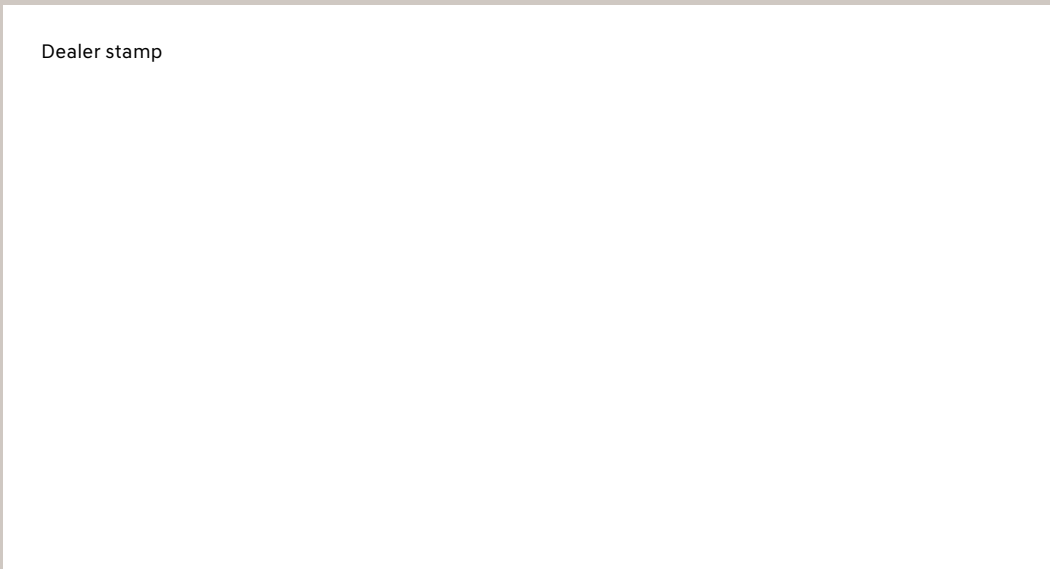
Add years to the interior of your Hyundai by protecting it from spills and messy loads with a durable, custom-fit cargo tray.



Premium all-weather floor liners

Premium all-weather floor liners were designed to cover the interior carpet, providing maximum protection against the elements that other mats cannot offer. Their unique and durable design features a non-slip surface for added comfort and a long-lasting premium look. Remove carpet mats prior to installation.

5 YEAR	100,000 km Comprehensive Limited Warranty ¹	5 YEAR	100,000 km Emission Warranty
5 YEAR	100,000 km Powertrain Warranty	5 YEAR	Unlimited km Roadside Assistance Program ¹¹
8 YEAR	160,000 km Electric Vehicle System ¹¹¹¹		



One of the best-backed warranties in Canada.

You will see that a number of our vehicles have received multiple awards from the most reputable third-party organizations, so you can take their word when it comes to the quality of our vehicles. This quality is equally matched by the quality of our warranty. We stand confidently behind our products to give you ultimate peace of mind with a 5-year/100,000 kilometre Comprehensive Limited Warranty¹. We also provide a 5-year/Unlimited kilometre Roadside Assistance Program¹¹ featuring flat tire changing, lockout service and more. Just one toll-free call away, 24 hours a day.

¹The Hyundai name, logos, product names, feature names, images and slogans are trademarks owned or licensed by Hyundai Auto Canada Corp.. Specifications, features, illustrations, accessories, materials and equipment and all other information shown in this brochure are based on the latest information available at the time of publication. Although descriptions are believed to be correct, accuracy cannot be guaranteed. Hyundai Auto Canada Corp. reserves the right to make any changes or modifications at any time, without notice or obligation, including, without limitation, in colour, specifications, features, accessories, materials, equipment and models. Some vehicles are shown with optional equipment. All Hyundai warranties have no deductible. ¹¹Hyundai's Comprehensive Limited Warranty coverage covers most vehicle components against defects in workmanship under normal use and maintenance conditions. ¹¹¹¹Hyundai's 24-Hour Roadside Assistance Program is a limited service and does not cover certain costs or expenses. Roadside Assistance is not a warranty. ¹¹¹¹¹EV System includes motor, inverter unit, VCM, reduction gear, DC/DC converter, onboard charger and connector, trickle charge cable, in-cable control box and high-voltage battery. ¹All-electric driving range of 354 kilometres based on a battery capacity of 58 kWh and battery usage rate of 19.3 kWh/100 km. Calculated based on a fully charged battery. Based on manufacturer testing and used for comparison purposes only. Actual range may vary based on driving conditions and the addition of certain vehicle accessories. ¹¹All-electric driving range of 488 kilometres based on a battery capacity of 77.4 kWh and battery usage rate of 18.6 kWh/100 km. Calculated based on a fully charged battery. Based on manufacturer testing and used for comparison purposes only. Actual range may vary based on driving conditions and the addition of certain vehicle accessories. ¹¹¹Applicable with available 77.4 kWh long-range AWD battery and All-Wheel Drive option. ¹¹¹¹Apple CarPlay™ may not be available on all devices and may not be available in all countries or regions. Visit www.apple.com for further details and any applicable limitations. Apple and Apple CarPlay are trademarks of Apple Inc.. ¹¹¹¹¹Android Auto may not be available on all devices and may not be available in all countries or regions. Visit www.android.com for further details and any applicable limitations. Android and Android Auto are trademarks of Google Inc.. ¹¹¹¹¹¹Vehicle is equipped with the ability to access SiriusXM radio. Does not include subscription. The SiriusXM™ name is a trademark of SiriusXM Satellite Radio Inc.. ¹¹¹¹¹¹¹Bluelink® includes 3 years of service without charge. The Bluelink service is available for new vehicle purchases and leases subject to the Bluelink subscription terms and conditions. Only use Bluelink and corresponding devices when safe to do so. Cellular and GPS coverage is required. Features, specifications and fees may vary by model and are subject to change. For more on details and limitations, visit hyundaicanada.com or your authorized Hyundai dealer. Bluetooth® word mark and logos are registered trademarks owned by Bluetooth SIG, Inc.. Bose® is a registered trademark of Bose Corporation. All other trademarks and trade names are those of their respective owners. Some images shown with special graphic effects.

Hyundai Auto Canada Corp.
hyundaicanada.com

